

# State of the Campus 2005

Charles R. Bantz  
Chancellor of IUPUI  
October 6, 2005

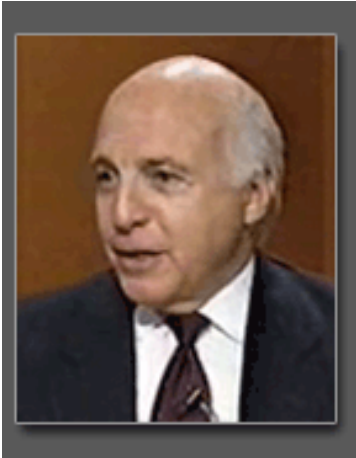


# Why Doubling?

- **2002 plan is foundation**
- **IUPUI is essential to Indiana's future**
- **Education for success**
- **Research for new opportunities**
- **Engagement for Indianapolis**



# Economic Development Means Graduates in Indiana

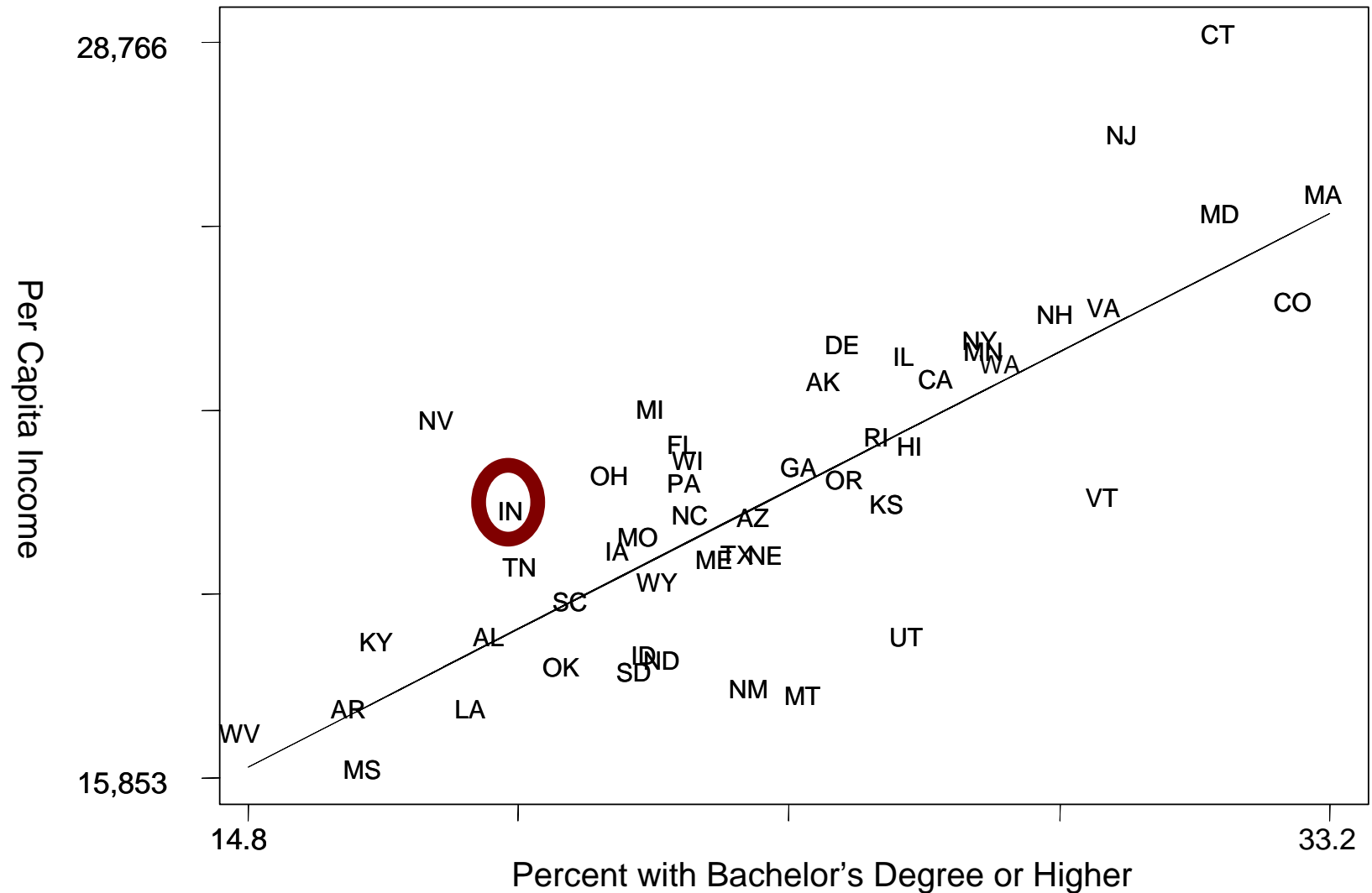


**Mickey Maurer**  
**President**  
**Indiana Economic**  
**Development Corporation**

## **3-pronged approach to attracting business to Indiana:**

- **Connection to Indiana (e.g., CEO is an alum)**
- **Connection to economic cluster already doing well in Indiana**
- **Connection with an existing Indiana company**

# Relationship Between Educational Attainment and Personal Income by State, 2000





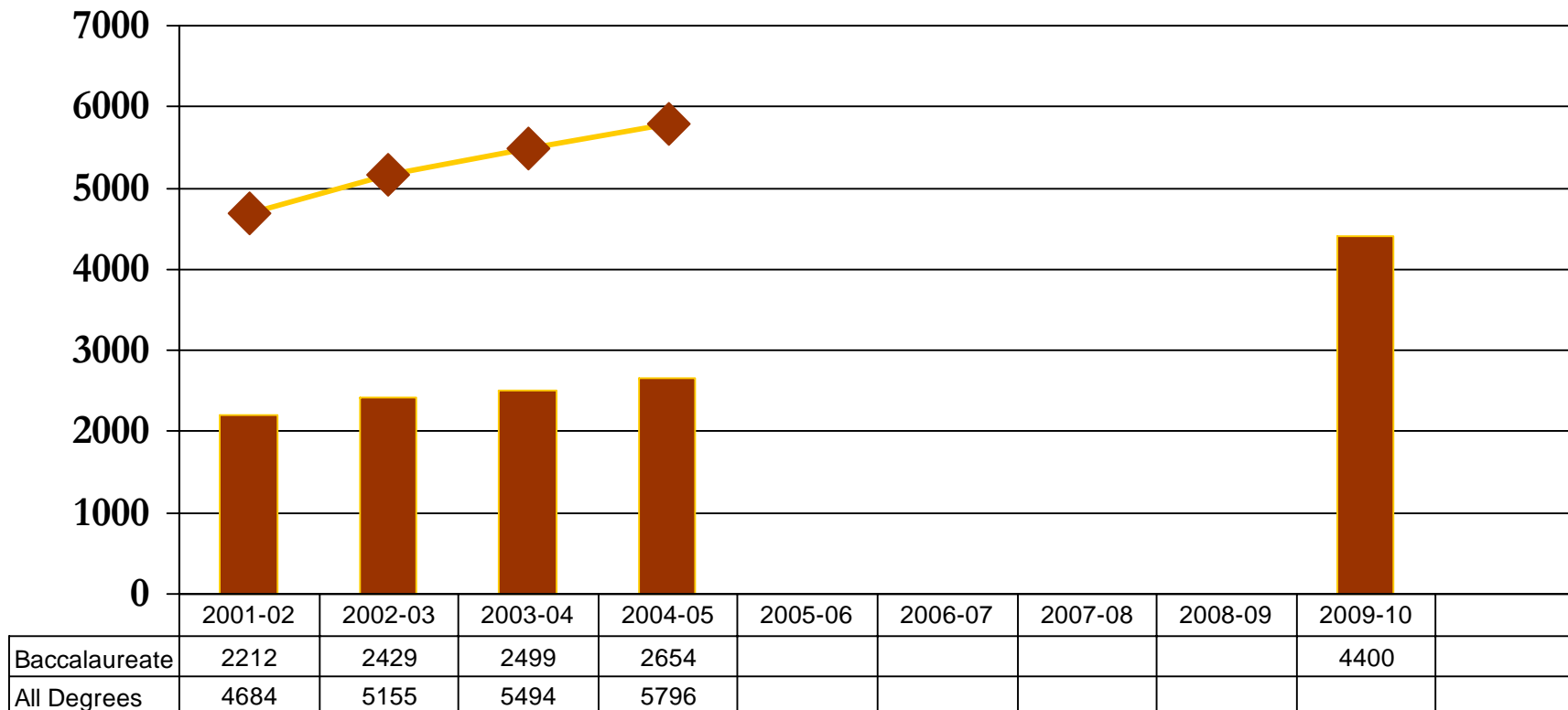
# Doubling Teaching & Learning

## GOALS

- Using 2002 as the basis for doubling, increase to 4,000 the number of baccalaureate degrees granted by 2010.
- Increase to at least 75% the freshman-to-sophomore retention rate for first-time full-time students beginning in Fall 2008 (current rate is 65%).
- Increase the 6-year graduation rate to 40% for first-time full-time students entering in Fall 2004 (current rate is 22% for full-time students entering in fall 1998).

# Doubling Teaching & Learning

**P  
R  
O  
G  
R  
E  
S  
S**



## Baccalaureate Degrees Conferred

# Doubling Teaching & Learning

**C  
E  
L  
E  
B  
R  
A  
T  
E**



## **U.S. News & World Report 2006 Rankings**

**For the fourth year in a row, IUPUI recognized for**

- first-year experiences**
- learning communities**
- service learning**

# Doubling Teaching & Learning

C  
E  
L  
E  
B  
R  
A  
T  
E



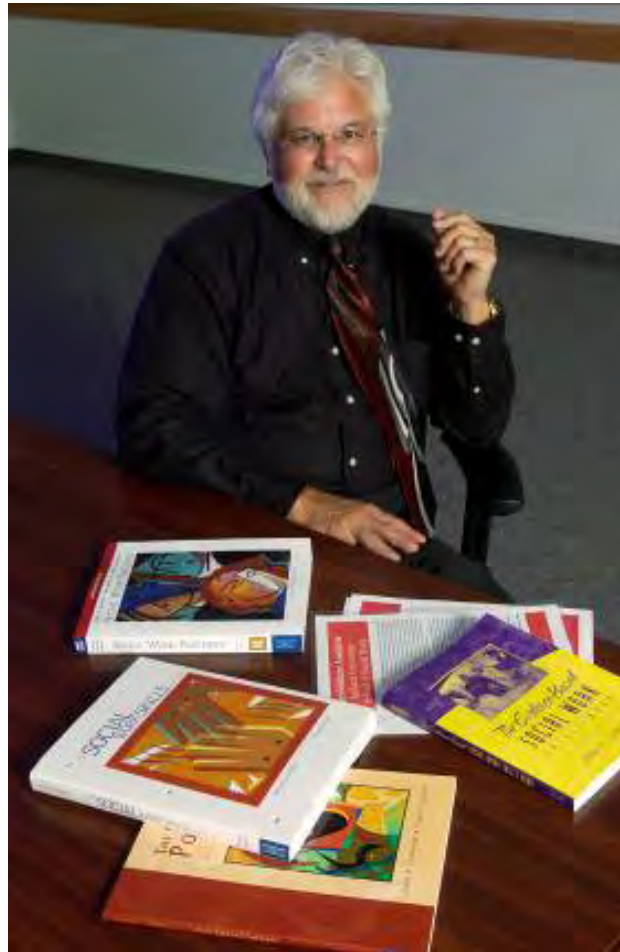
## **Council on Adult and Experiential Learning IUPUI Case Study Strengths**

- **Contact with faculty**
- **Use of technology (both for teaching and student support)**



# Doubling Teaching & Learning

C  
E  
L  
E  
B  
R  
A  
T  
E



**Barry Cournoyer**  
School of Social Work  
Curriculum Analyzer ©

## National Leadership in Pedagogy



**Elizabeth Kryder-Reid**  
Museum Studies  
Partnership with SLIS Faculty  
National online tutorial on library and  
museum outcomes-based evaluation

# Doubling Teaching & Learning

C  
E  
L  
E  
B  
R  
A  
T  
E



**Hazel Gomes**  
**Engineering & Technology**  
Bepko Scholar  
Biomedical Engineering Program  
Native of Kuwait

.

**The School of Engineering and Technology** awarded 325 BS degrees this year, exceeding target of 306 toward goal of doubling baccalaureates.



**Women  
In  
Science  
House  
Opens**

# Doubling Teaching & Learning

C  
E  
L  
E  
B  
R  
A  
T  
E



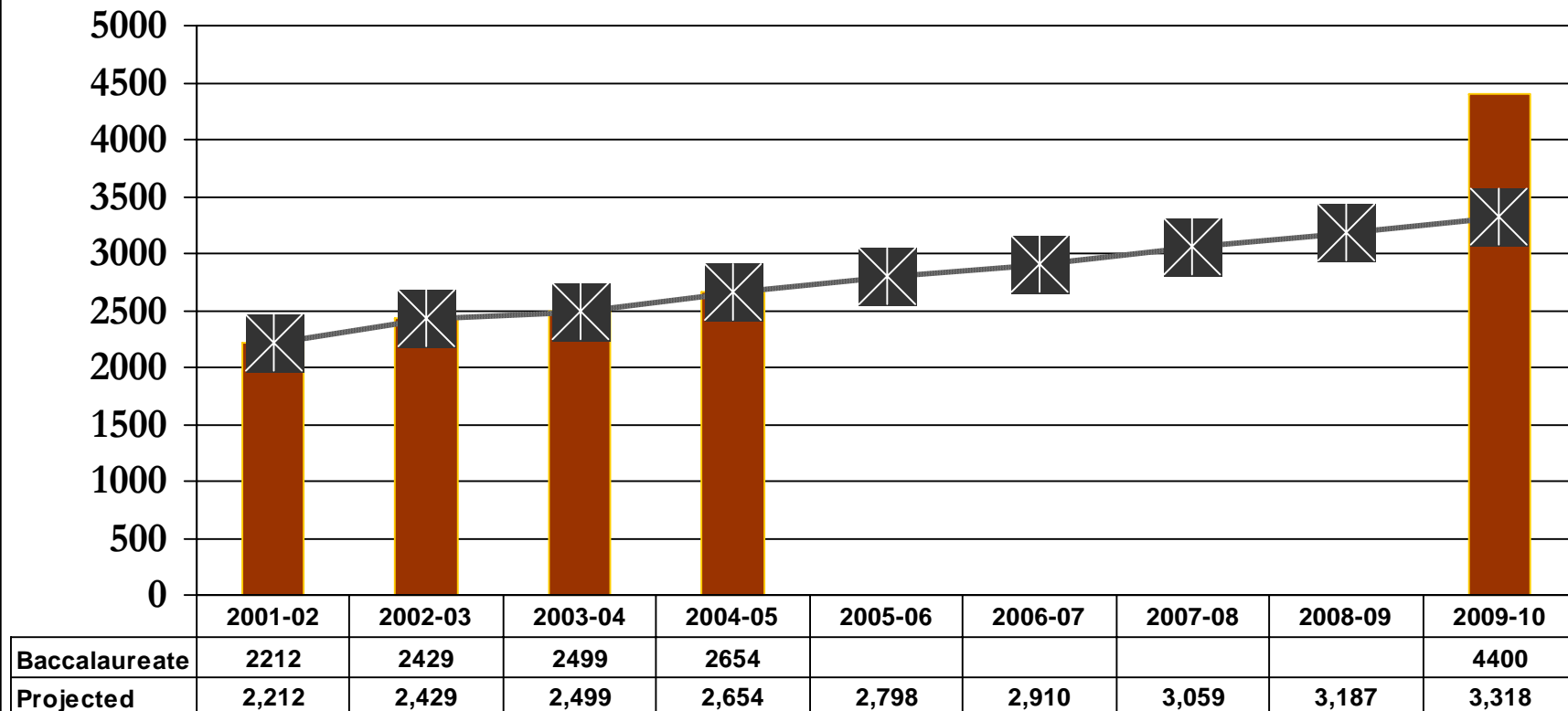
**Jason Gabehart, Senior**  
IU School of Liberal Arts  
Communication Studies Major  
Sam Jones Community Service Scholar  
Post-Baccalaureate Plans: Law School

**Sam Jones Community Service Scholars** have a retention rate of 85%.

**Nina Scholars** have a retention rate of 95%.

# Doubling Teaching & Learning

**C  
H  
A  
L  
L  
E  
N  
G  
E**





# Doubling Research, Scholarship, Creative Activity

## GOALS

- **Strategic plan to increase synergies and research activity across campus.**
- **Double external funding by 2010.**
- **Invest selectively to enhance faculty and infrastructure support for research.**
- **Develop appropriate means beyond external funding to measure research.**



# Doubling Research, Scholarship, Creative Activity

C  
E  
L  
E  
B  
R  
A  
T  
E

- 88% of campus total across schools associated with **life sciences**.
- **Nursing** - increase of 68% in awards. Moved from 21st to 17th in NIH funding.
- **SPEA** doubled its awards with \$2m Lilly Endowment grant for “Building Indiana Communities One at a Time.”

# Doubling Research, Scholarship, Creative Activity

C  
E  
L  
E  
B  
R  
A  
T  
E



Indiana Health Information Exchange

**U.S. Department  
of  
Health and  
Human Services  
provided \$6.5 m**



**Stephen Downs**

Regenstrief Medical Informatics Faculty  
Director of the Children's Health Research Program

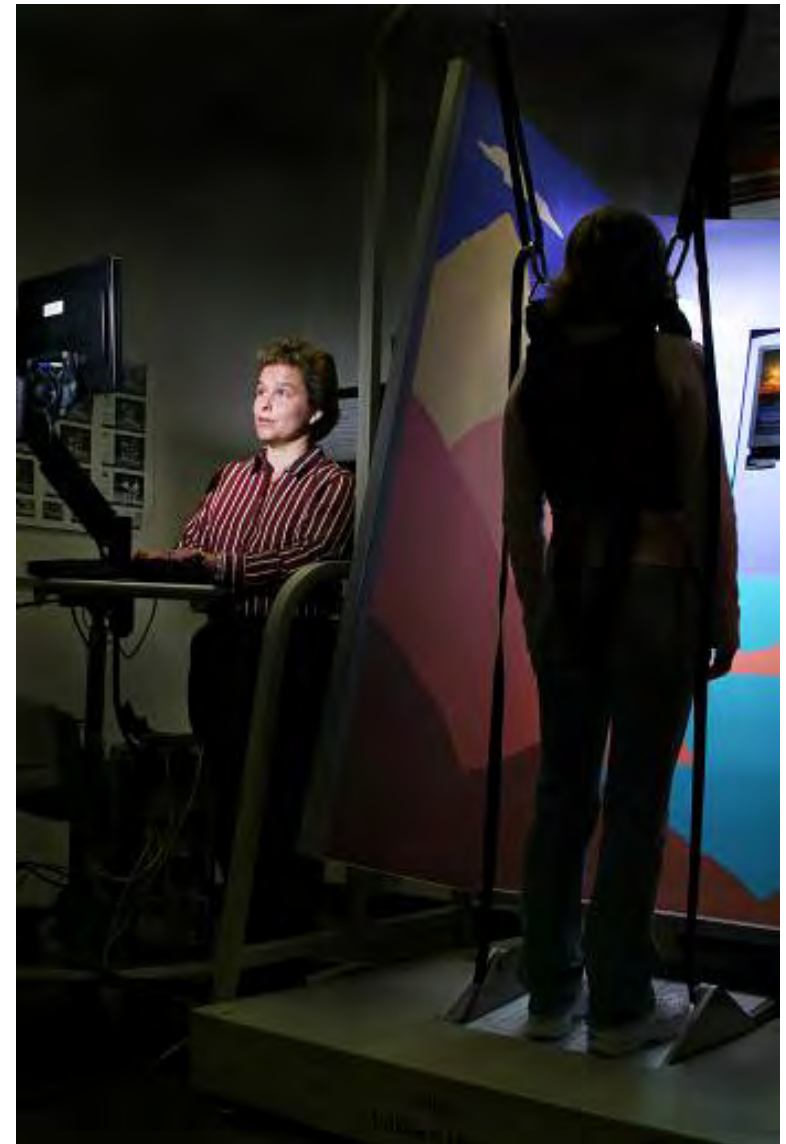
# Doubling Research, Scholarship, Creative Activity

C  
E  
L  
E  
B  
R  
A  
T  
E



## **Indiana Center for Rehabilitation Sciences and Engineering Research**

a partnership involving seven schools, the Rehabilitation Hospital of Indiana, and Roudebush VA Medical Center, received \$1m Department of Defense appropriation to study rehabilitation needs of veterans





# Doubling Research, Scholarship, Creative Activity

C  
E  
L  
E  
B  
R  
A  
T  
E



## **Medical Information Sciences Building**

will house 400 people initially, including

Division of Children's Health Services Research  
Center for Bioethics

Division of Biostatistics (plus some of  
Department of Mathematical Sciences)

Center for Computational Biology and Bioinformatics

Regenstrief Institute

& room to attract more researchers.



# Doubling Research, Scholarship, Creative Activity

C  
E  
L  
E  
B  
R  
A  
T  
E



## **Indiana University Cancer Hospital**

**Indiana University Cancer Center's** designation as a clinical cancer center was renewed by the National Cancer Institute.



# Doubling Research, Scholarship, Creative Activity

C  
E  
L  
E  
B  
R  
A  
T  
E

INSTITUTE FOR  
AMERICAN  
THOUGHT



# Doubling Research, Scholarship, Creative Activity

**C  
E  
L  
E  
B  
R  
A  
T  
E**



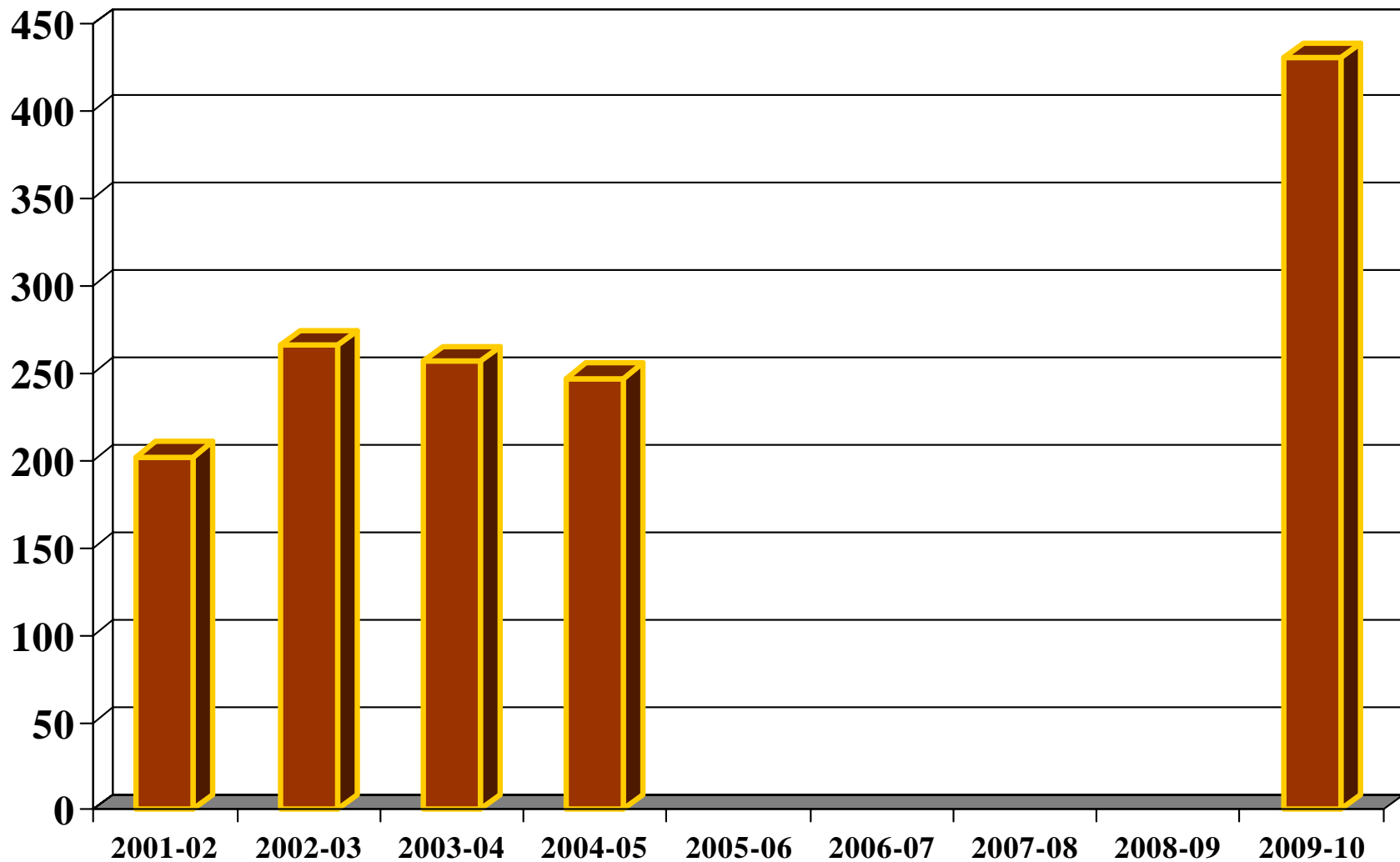
**Eskenazi Hall  
Herron School of Art**



**Informatics and  
Communications  
Technology Complex**

# Doubling Research, Scholarship, Creative Activity

**C  
H  
A  
L  
L  
E  
N  
G  
E**





# Doubling Research, Scholarship, Creative Activity

## C H A L L E N G E

### **Other Infrastructure Support Research Support Funds Grant**

- \$1 m annually to fund new faculty members (assistant professors) in establishing research program

### **NIH Roadmap Initiative**

- \$300K distributed to stimulate collaboration between schools

### **Reorganization of the Research and Sponsored Programs Office**

# Doubling Civic Engagement

## GOALS



## Democracy Plaza

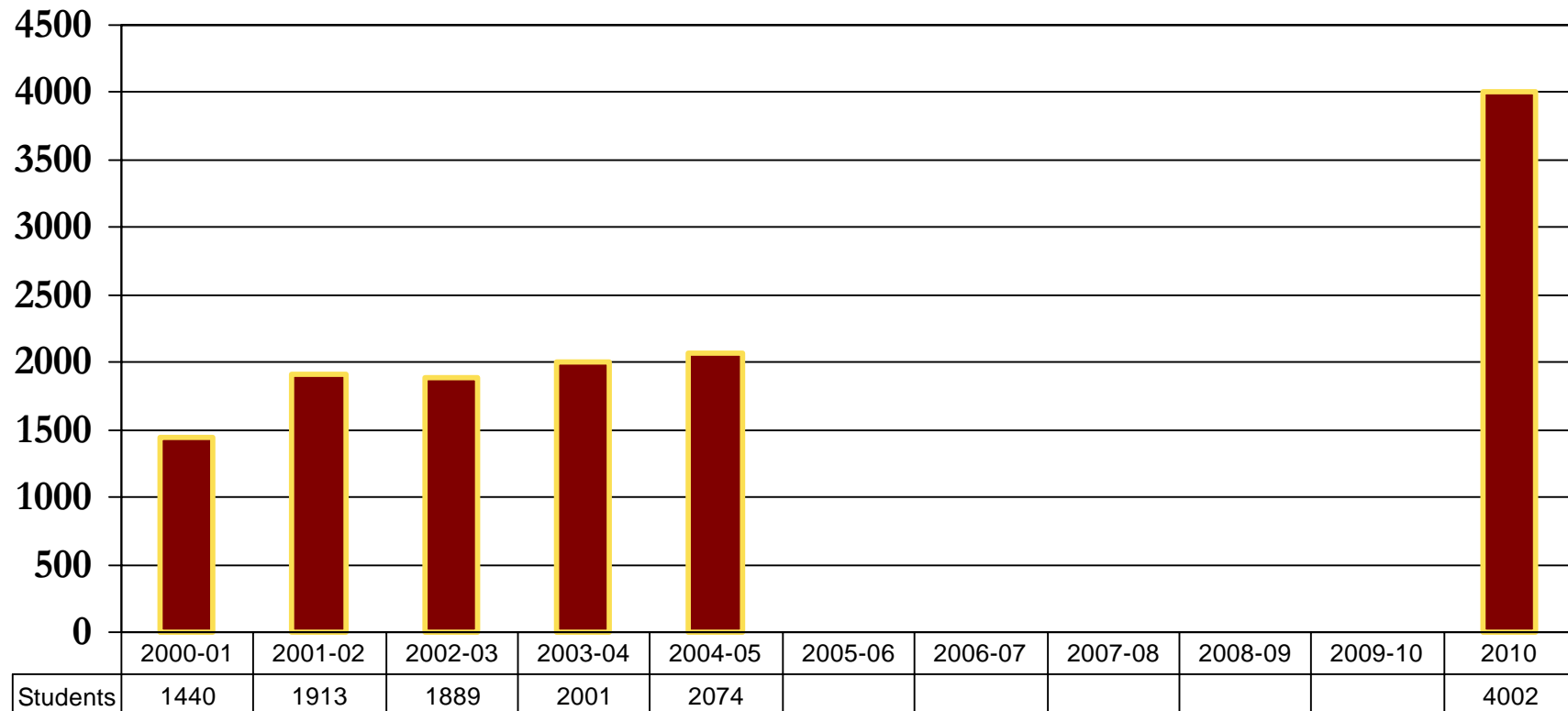
1. Define and systematically measure civic engagement
2. Double community-based learning by 2010
3. Document that by 2010 every graduate has completed a reflective experience that enhances their understanding of the responsibilities of citizenship.



# Doubling Civic Engagement

## PROGRESS

### Service Learning Student Participation



Hours		19,675	15,758	25,307	48,060
-------	--	--------	--------	--------	--------

Number of 2004-05  
Service Learning  
Classes = 51  
(Up 38% from 2001-02)

# Doubling Civic Engagement

C  
E  
L  
E  
B  
R  
A  
T  
E

## 2004-2005 National Recognition

- Identified by *U.S. News and World Report* for the 4th straight year as one of the **top 20** service learning programs in the nation
- Selected by **Princeton Review's** *College with a Conscience, 2005* as one of 81 colleges and universities that has outstanding commitment to community involvement.
- Selected by **Carnegie Foundation for the Advancement of Teaching and Learning** as 1 of 12 institutions to pilot the **Carnegie Classification for Community Engagement**
- One of the first 3 campuses in the nation to include "Civic Engagement" in re-accreditation review through **North Central Association**.

Lilly  
**ARBOR**  
Project



# Doubling Civic Engagement

The Sam H. Jones  
Community  
Service Scholarship  
Program is one of  
the largest  
service-based  
scholarship  
programs  
in the nation.



Since its inception in 1994,  
IUPUI has awarded  
more than one-half million dollars  
in service scholarships.

C  
E  
L  
E  
B  
R  
A  
T  
E

# Doubling Civic Engagement

C  
E  
L  
E  
B  
R  
A  
T  
E

## K-12 Engagement

### Adolescent Substance Abuse Prevention Program

- Public Health
- Medicine
- Nursing
- Dentistry
- Clarian Health Partners, Inc.,
- IPS

In the past two years more than 1,000 children have participated; 90% of the surveyed teachers believed the methods were extremely effective.

### Charlie Barman - Indiana Commission for Higher Education, Title II Grant

Two-year project will assist middle school science teachers with incorporating inquiry-based instruction in their current teaching practice.

- Education
- Science
- Indiana Essential Schools Network
- Indianapolis Public Schools



2005 Geography Bee



NCAA Stay in Bounds Program



AmericaReads



# Doubling Civic Engagement

C  
E  
L  
E  
B  
R  
A  
T  
E



For the past three years, **Informatics**, **Journalism**, and **Nursing** faculty have traveled with Operation Walk, which sends volunteer surgical teams to developing countries where they produce documentary videos of surgeries depicting advanced treatments and techniques for hip and knee joint injuries.



# Doubling Civic Engagement

C  
E  
L  
E  
B  
R  
A  
T  
E



**Women and Philanthropy: Gaining Momentum  
18th Annual Symposium, August 2005**



The **Third Millennium Project** was funded by a five-year, \$3 million grant from the **W.K. Kellogg Foundation**.

The **Center on Philanthropy** project draws on expertise derived from **Women's Philanthropy Institute**, symposia on youth and black philanthropy, and affiliations with the **Randall L. Tobias Center for Leadership Excellence** and **Lake Family Institute on Faith and Giving**.

# Doubling Civic Engagement

## CHALLENGE

### Council on Civic Engagement

- Civic engagement is central to IUPUI's identity, but will not be fully appreciated unless defined and measured.
- IUPUI has an opportunity to leave its mark nationally and internationally on reinstating civic engagement as part of higher education's mission.

# Doubling Diversity

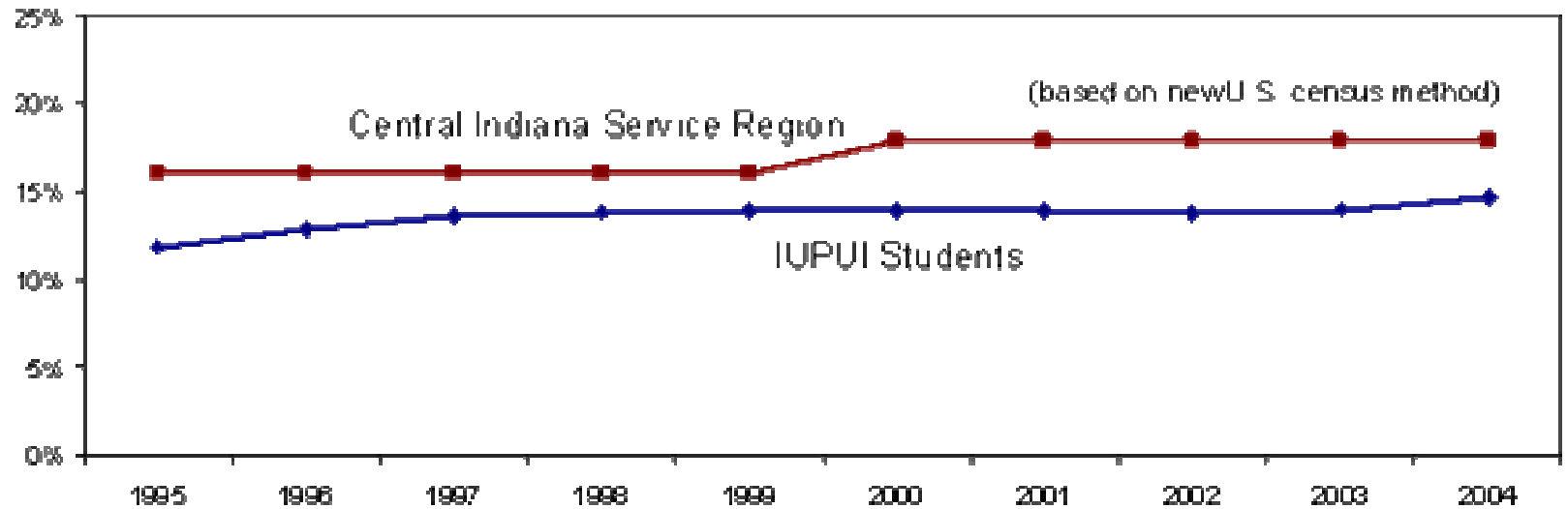
## GOALS

1. To instill diversity as an educational and social asset reflected in our learning and work.
2. To attain a demographic diversity reflecting the diversity of our service region.
3. To increase and improve the social and physical environments as outlined by our 13 action items and 8 diversity performance indicators.



# Doubling Diversity

P  
R  
O  
G  
R  
E  
S  
S





# Doubling Diversity

C  
E  
L  
E  
B  
R  
A  
T  
E



**Priya Kheradia**

Native: Kenya

Purdue School of Science

Undergraduate Research Opportunities Program

Post-Baccalaureate Plans: IU School of Dentistry

## **School of Dentistry**

increased number of underrepresented minorities in the beginning DDS class of 100, with

5 African-Americans

3 Hispanics

1 Native American

# Doubling Diversity

2005 Dr. Joseph T. Taylor Award for Excellence in Diversity



Jeffery  
Anderson



Nancy  
Chism



Angela  
Espada



Didier  
Gondola



Robert D.  
Patterson

C  
E  
L  
E  
B  
R  
A  
T  
E

## Center on Philanthropy

- 2005-2006 class of 20 MA students includes 3 African Americans, 1 Native American, and 1 student from Mexico.
- Used focused recruitment visits
- Retention efforts include close monitoring and employment with the center.

# Doubling Diversity

## CHALLENGE



**Council on Diversity**  
“We have made little progress in retaining and graduating a diverse student body.”

**George Kuh** - keynote address - **Edward C. Moore Symposium**  
highlighted the critical roles that experience with diversity and learning communities play in increasing engagement for all students

# What's Next?





# Indiana and Central Indiana Priorities and IUPUI



**Life Sciences  
Information Technology  
Advanced  
Manufacturing  
Nonprofit Management  
and Philanthropy  
Arts/Culture/Tourism**

# What's Next?



## **Indiana University Presidential Goals**

Mission Differentiation  
Accountability  
Life Sciences  
Arts & Humanities  
Faculty Compensation  
Leadership Development  
Advancing Indiana

IUPUI  
IUPUI  
IUPUI  
IUPUI  
IUPUI  
IUPUI  
IUPUI

# Mission

**Indiana University-Purdue University Indianapolis (IUPUI), a partnership between Indiana and Purdue Universities, is Indiana's urban research and academic health sciences campus. IUPUI's mission is to advance the State of Indiana and the intellectual growth of its citizens to the highest levels nationally and internationally through research and creative activity, teaching and learning, and civic engagement. By offering a distinctive range of bachelor's, master's, professional, and Ph.D. degrees, IUPUI promotes the educational, cultural, and economic development of central Indiana and beyond through innovative collaborations, external partnerships, and a strong commitment to diversity.**

# What's Next?

	Teaching & Learning	Research, Scholarship, Creative Activity	Civic Engage- ment	Diversity
Life-Health Sciences				
Information Technology				
Advanced Manufacturing				
Nonprofits Philanthropy				
Arts Culture Tourism				



# Economic Context

**US Economy in a 'non-recession recession'**

**State Funding for Universities Declines**

**Structural Change in IN Economy**



# What's Next?

## **Implement Mission-Based Priorities**

### **Establish IUPUI Fiscal Futures Team**

- Strategies for response to budget**
- Priorities for investments**
- Incentive strategy for doubling**

# What's Next?

## Implement mission-based priorities

- **Focus Commitment to Excellence Funding**
  - ~ \$1.8 m life and health sciences undergraduate
  - ~ \$1.0 m faculty in areas of excellence & priority
  - ~ \$ .5 m support for excellent students & services
- **New state research funding**
  - \$2.0 m life sciences faculty start-up
  - \$ .3 m research support
- **\$1.0 m research space for science and engineering**

# What's Next?



**Leadership**

Tradition of excellence

Significant changes

What's next?



# What's Next?



## **Review of Organization**

**Executive Vice Chancellor  
& Dean of the Faculties**

- search launched

**Vice Chancellor / Research**

- search launch Nov.

**Vice Chancellor / External Affairs**

- search to follow

# What's Next?

	Teaching & Learning	Research, Scholarship, Creative Activity	Civic Engage- ment	Diversity
Life-Health Sciences				
Information Technology				
Advanced Manufacturing				
Nonprofits Philanthropy				
Arts Culture Tourism				

