

green sheet



volume twenty, number nineteen

may 13, 1990

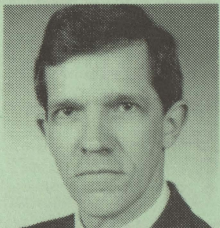
THREE NEW ASSOCIATE DIRECTORS JOIN PHILANTHROPY CENTER

Robert E. Fogal, Dwight F. Burlingame and Laura Hansen Dean are the new associate directors at the IU Center on Philanthropy on campus, director Robert L. Payton is pleased to announce.



FOGAL

Robert E. Fogal is associate director for public service programs and director of The Fund Raising School, the nation's most comprehensive program for teaching fund raising and management principles and practice. He was vice president for development at Otterbein College in Westerville and holds a Ph.D. in folklore from IU and fund-raising certification from the National Society of Fund Raising Executives (NSFRE).



BURLINGAME

Burlingame is associate director for academic programs and research. He comes to IUPUI from Bowling Green State U., where he was vice president for university relations and also taught graduate school and had served as dean of libraries and learning resources. He holds a Ph.D. in library science from Florida State U., a master's degree from the U. of Illinois and NSFRE fund-raising certification.



HANSEN DEAN

Laura Hansen Dean becomes associate director for development and communication, effective July 1. Her responsibilities will include generating local and national support for the Center, which is the country's most extensive program for teaching and research in philanthropy. Until June 8 she remains executive director and legal counsel for the foundation at Ball State University, also her alma mater. She graduated magna cum laude from the IU School of Law-Indianapolis.

SIX GET GRANTS FOR SUMMER RESEARCH IN TECHNOLOGIES

Grants of up to \$6,000 each will make it possible for six IUPUI faculty members to devote the summer to research and study in new technologies. The Network for Excellence in Teaching (NET) awards have been given annually since 1988. In addition to research during Summer I, recipients will attend a two-day workshop in ES 2105 and IE 101 that will acquaint them with instructional design and orient them to the new high-tech classroom. Faculty award winners are Charles R. Barman and Jill Shedd from the School of Education, who share a grant; Kenneth R. Dunipace and Erdogan M. Sener, School of Engineering and Technology; Raymond J. Russo, School of Science, and Susan C. Shepherd, School of Liberal Arts.

THE 1990 CHANCELLOR'S AWARD FOR EXCELLENCE IN TEACHING was bestowed in recent ceremonies at University Place on Susan Buck Sutton, full-time, and Barbara Zimmer, associate faculty, both in the School of Liberal Arts. Sutton is an associate professor and chairman, Dept. of Anthropology, and Zimmer teaches English as a second language, Dept. of English.

NOT HEARSAY: MAY IS BETTER SPEECH/HEARING MONTH

If you or yours are among the one in 10 Americans who suffer from some kind of speech, language or hearing disorder, there are special departments on campus that can evaluate, diagnose and treat many disorders. The rapidly developing team of physicians, speech pathologists and audiologists in Audiology and Speech/Language Pathology Sections, Dept. of Otolaryngology--Head and Neck Surgery, IU Medical Center, serves all ages from infants to oldsters. Speech problems such as stuttering, those caused by disease or birth defects and much more can be evaluated. Hearing testing, cochlear implant and other audiological services also can be provided. For more, call 4-8868 or 4-6676.

NEWS 'N' NOTES FROM HERE 'N' THERE

Congrats! and Happy Day--Best wishes to all the men and women who graduate from IUPUI and welcome to the IU and Purdue Alumni Associations. And, Happy Mother's Day.

Need Adults--Three groups of healthy men and women, ages 25-55, are needed for a body awareness study--healthy adults, healthy adults beginning a new fitness program, and those who have multiple sclerosis or asthma but describe themselves as healthy and in an independent living situation. The research involves being interviewed and keeping a daily record for a brief time. For details, call Dr. M.J. Price, 4-4969, 9 a.m.-5 p.m.

Summer Sounds Off at IUB--Outdoor band concerts, chamber music, a composer's seminar and a production of "Company" are just part of the IU School of Music's Summer Festival '90. Outstanding students and their mentors will perform under the leadership of guest conductors. Tickets go on sale June 15. Call 5-7433.

Nurnberger Speaking--John I. Nurnberger, Jr., M.D., director, Institute of Psychiatric Research, IU Medical Center, presents "Genetic Strategies in Neuropsychiatry" in grand rounds, June 8, 11 a.m., auditorium, Larue Carter Hospital. All welcome.

Men Also Welcome--"Women and Work 1990: Preparing for the New Majority," the fifth conference of its kind, is June 19, 9 a.m.-5 p.m., in Muncie. Judge May Jimison, Marion County Superior Court, Criminal Div. VI, is the keynote speaker. Under the direction of the Dept. of Labor/Women's Bureau, the conference will provide a forum for discussion and exchange between working women and the men and women who provide services to them. For fees and more, call the YWCA, (317) 299-2750.

Walk for CF--Riley Hospital is the largest cystic fibrosis care center in the state and will benefit greatly from the annual walk, "Great Strides," May 19, beginning and ending at the Indianapolis Zoo and touching on campus. Registration is at 9 a.m., with start at 10 a.m. Walkers get into the zoo free and there are trips and gifts to win. There also is a walk, same day, same time in Noblesville. For either walk, call 631-4115.

Ask Your Mother?--Last in the Women's Health Awareness Series is Maggie Blyth, M.D., leading the discussion "Teenagers and Sex," May 22, 11 a.m.-noon, UH N436. Register by calling OB/GYN nursing office, 4-8842.

Crisis Training--New volunteers for the crisis and intervention service of the Mental Health Association begin training June 1. To volunteer, or for more, call 269-1569.

Medical Genetics--David S. Leibowitz, M.D., associate professor of medicine and medical genetics, IU School of Medicine, presents "The BCR/ABL Fusion Gene," May 15, 4 p.m., IB 233.

BLAUDOW RETIRES, WREN TO MANAGE PHYSICAL PLANT

Frank Blaudow, director of the Physical Plant, is retiring after 29 years' service on campus, and Emily C. Wren, director of campus facility services, will manage physical plant, along with her other responsibilities of space planning and real estate functions. A reception to honor Blaudow is set for June 12, 3-5 p.m., in the ballroom, University Place Hotel. All are welcome. Wren has been in management at IUPUI for nine years, most recently in the area of facilities management. She holds an MBA from IU and MS and BS degrees from Purdue. For the past two years she has co-chaired the campus United Way Campaign, and she is a member of the board for the Ronald McDonald House. Her campus address and phone number remains AO 120, 4-4553.

POSITION AVAILABLE

LIBRARIAN, assistant or associate for serials cataloger. Recruitment open to IU libraries system only. Requirements include master's or higher ALA-accredited degree, knowledge of AACR1-2, LC subject headings and classification, MARC formats, 1-2 years' serials cataloging experience in an academic library using an automated bibliographic utility. Send letter of application, resume and four references to Barbara B. Fischler, director, IUPUI University Libraries, 815 West Michigan Street, Indianapolis 46202.

AFRICAN DOCS TO DISCUSS HEALTH AND SPIRIT EXPERIENCES

In a forum on international health, Dr. Dave Van Reken, Dept. of Pediatrics, School of Medicine, and several African physicians will present "Spiritual Dimensions to the Third World Health Experiences," May 17, 6 p.m., NU 336. They will discuss "spirit" experiences in their medical practice which cannot be explained by known natural law and will explore health issues as they relate to the realm of the supernatural.

MORE NEWS 'N' NOTES

Get Them Back--The National Science Foundation is asking higher education faculty nationwide to urge qualified students to enter graduate school to prepare themselves for careers in science and engineering. Graduate research fellowship grants are available in more than 100 areas. Competition opens in September, 1990, and pamphlets about it are available now by writing Fellowship Office, National Research Council, 2101 Constitution Ave., Washington, D.C. 20418.

Durang Play Opens--"The Marriage of Bette and Boo" opens at the Phoenix Theatre May 18 and runs through June 10. For tickets and more, call 635-PLAY.

10-Payees Note--Human Resources Administration wants 10-pay faculty members who terminate employment at the end of the spring semester to know that they may continue their IU HealthCare/Maxicare until May 31. Group coverage can be extended for those appointed to teach during summer sessions, and health coverage is offered for up to 18 months after termination by paying 102 percent of the full premium. For more about 10-pay coverage, call Mary L. Kennedy, supervisor, retirement & group insurance, 4-4596.

IUPUI'S 20TH ANNIVERSARY TO BE FINALLY MARKED

In ceremonies May 16 at noon, a bronze plaque marking and memorializing IUPUI's 20th anniversary will be dedicated. The ceremony will be at the permanently mounted plaque in the park north of University Place Hotel, intersection of North Street and University Boulevard. All are welcome to the ceremony and to IUPUI's annual Fitness Day activities--the same day in the same location.

We Did That

SOCIAL WORK ENDS SERIES; GERMAN AMERICANS MEET HERE

The School of Social Work concluded its 1989-90 Social Policy Colloquium Series with a program last month featuring Pam Carter, executive assistant for Health and Human Services to Gov. Evan Bayh, who spoke about human services in Indiana for the next decade. She identified a set of issues that will be debated and discussed throughout the U.S., and they include workplace child care, infant mortality, mental health needs of the young, and skyrocketing health care costs and some form of national health insurance. A summary of the program is available by calling Ray Koleski, 4-6717.

Also last month, from across the U.S. and Canada, scholars in German history, folklore, literature and language were attracted to campus for the annual three-day meeting of the Society for German American Studies and the Indiana German Heritage Society. The children's choir of Jasper entertained, and there was folk dancing and gymnastics exhibits by children in the Athenaeum Turner's Tumblers. Topics of discussion centered around German heritage and culture. Hosts were the German American Center and the Dept. of German at IUPUI, with planning assistance provided by the German Consulate in Detroit and the German Historical Institute of Washington, D.C.

FINALLY...

...among our many distinguished 1989-90 graduates, we have some interesting folks, such as Thomas Davidson, hostage negotiator and assistant district commander of the Indiana State Police getting his associate of science degree from the School of Public and Environmental Affairs. We have Anna Quirino, whose grandparents were political prisoners in the Philippines under Marcos for many years. She's a dramatic kind of bright student who played the lead role last year in IUPUI's youth touring theater, and is getting her degree from the School of Liberal Arts. In the School of Law, there are two husband and wife teams getting their JD together--Joseph and Michelle Calderon, and Brian and Susan Gordon. Lots of moms are graduating this mother's day, and lots of grandmoms, such as Patricia Keane, 58, graduating from the Herron School of Art. These and hundreds more are participating in Commencement May 13, which is open to all and requires no tickets. The processional begins at 2:30 p.m., the program at 3 p.m.

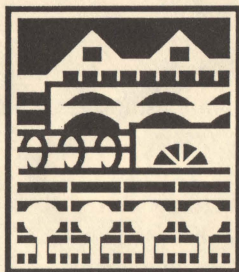
...Mary Jane Koch, director of the IUPUI Office of Gerontology in the Union Building, has been appointed by Governor Evan Bayh to a four-year term on the Indiana Health Facilities Council.

green sheet 

*News Bureau

Indiana University-Purdue University
at Indianapolis
355 Lansing Street
Indianapolis, Indiana 46202





IUPUI

May 12 through June 8

Calendar

Next Calendar in Green Sheet June 3, Deadline Tuesday May 29

Saturday May 12

FUTURE PROBLEM SOLVING COMPETITION: for gifted and talented youth grades 4-12 from throughout state, 7am-6:30pm, LE, CA, BS, ES buildings, for information 274-2314

STADIUM EVENT: City High School Track Championships, for information 226-4414

Sunday May 13

IUPUI COMMENCEMENT: 3pm, Hoosier Dome

Monday May 14

SPEA EXECUTIVE EDUCATION: Applied Foodservice Sanitation Workshop, 1pm, BS 4087, for information 274-3418

HEALTH INSURANCE INFORMATION: for full-time employees, 2-3pm, UN Roof Lounge, for information 274-4596

Tuesday May 15

SPEA EXECUTIVE EDUCATION: Public Management Institute, Advanced Management, 9am, BS 4087, through May 18, for information 274-3418

HUMAN RESOURCES TRAINING: Getting to Know the Personnel Policies, 9am, NU 242, to register 274-8931

MEDICAL GENETICS SEMINAR: "The BCR/ABL Fusion Gene," David S. Liebowitz, 4pm, IB 233, for information 274-2241

Wednesday May 16

IUPUI FITNESS DAY: 8th annual event, exhibits, demonstrations, health testing, door prizes, 9:30am-3:30pm, University Place Park, for information 274-8974

MEDICAL CONTINUING EDUCATION: 25th annual Multidisciplinary Child Care Conference, Hilton-on-the Circle Hotel, also May 17, for information 274-8353

DENTAL CONTINUING EDUCATION: Current Concepts of Temporomandibular Disorders--Occlusion, Conference Center, for information 274-7782

METROS WOMEN'S SOFTBALL: NAIA Tourney, Pensacola FL, through May 19, for information 274-2725

STADIUM EVENT: CYO Track Championship, for information 632-9311

Thursday May 17

NURSING CONTINUING EDUCATION: first National Perinatal Home Health Care Conference, Radisson Plaza Hotel, through May 19, for information 274-7779

PSYCHIATRY SEMINAR: "Behavioral Assessment of Rats Selectively Bred for Alcohol Preference and Non-Preference," Robert B. Stewart, Noon, PR Conf. Rm, for information 274-1362

MICROBIOLOGY/IMMUNOLOGY SEMINAR: "Mapping and Sequencing the Human Genome: Challenges and Opportunities," C. E. Hildebrand, Los Alamos Scientific Laboratory, 4pm, MS 326, for information 274-2235

Friday May 18

HERRON GALLERY EXHIBITION: "Indianapolis Collects, The Second Exhibition," 10am-5pm weekdays, through June 15, for information 923-3651

DENTAL CONTINUING EDUCATION: Oral Surgery Illustrated--A Bread and Butter Office Oral Surgery Review, 8:30am, Dental School, also May 29, for information 274-7782

MEDICAL CONTINUING EDUCATION: New Horizons in the Practice of Medicine, Conference Center, for information 274-8353

WOMEN'S HEALTH AWARENESS SERIES: "Pregnancy Monitoring Tools for the 1990s," Ian Johnston, OB/Gyn Dept, 11am, UH N-436, for information 274-8842

MOLECULAR/CELLULAR BIOPHYSICS SEMINAR: "Molecular Characterization of a Potential Neisseria Vaccine Candidate," C.E. Wilde, Microbiology/Immunology Dept, 4:30pm, KB 131, for information 274-7772

Saturday May 19

DEDICATION: Wells Pediatric Research Center, 10 am, Riley Hospital, for information 274-5060

MEDICAL ALUMNI DAY: 11:30am, University Place Park, for information 274-5060

STADIUM EVENT: Area 8 Special Olympics Track Meet, also May 20, for information 253-7899

Attention Event Planners:

The annual IUPUI Activities Calendar is now being assembled. If you are planning events for anytime during the 1990-91 year, including summer 1991, submit your dates and events to Calendar Central, AO 109, before June 15.



IUPUI

Calendar

Saturday May 20

NATATORIUM EVENT: Area 8 Special Olympics Swim Meet, for information 253-7899

Monday May 21

INDIANA BUSINESS SEMINAR: Leadership for the 1990s, 8:30am, Conference Center, through May 23, registration 274-2670

NEW EMPLOYEE ORIENTATION: for full-time non-hospital employees, 2-4pm, UN Roof Lounge, for information 274-4596

HISTORY OF MEDICINE SOCIETY: Public lecture, "Dr. Willis Gatch," Stanley Battersby, professor emeritus of surgery, (tent) 4pm, Emerson Hall, for information 274-8577

Tuesday May 22

WOMEN'S HEALTH AWARENESS SERIES: "Teenagers and Sex," Margaret Blythe, Wishard Pediatrics, 11am, UH N-436, for information 274-8842

Wednesday May 23

SPEA EXECUTIVE EDUCATION: Public Management Institute, Management for Organizational Change, 9am, BS 4095, for information 274-3418

OFFICE EQUIPMENT EXPO: displays, demonstrations of office equipment by 7 vendors, door prizes, 9:30am-5:30pm, Conference Center 137, for information, 274-8019

DENTAL CONTINUING EDUCATION: Preparing the Auxiliary for Dental Radiology Certification, 8:30am, Dental School, for information 274-7782

STAFF COUNCIL: 3pm, BS 2003, for information 274-2215

Thursday May 24

SPEA EXECUTIVE EDUCATION: Public Management Institute, Balancing Dual Roles for Managerial Effectiveness, 9am, BS 4095, for information 274-3418

PSYCHIATRY SEMINAR: "New Developments in Behavioral Psychopharmacology," Joseph N. Hingtgen, Noon, PR Conf Rm, for information 274-1362

Friday May 24

PSYCHIATRY SEMINAR: "Pseudoseizures," Elizabeth S. Bowman and Wayne Shen, 11am, Larue Carter Auditorium, for information 274-1362

To place listings in the Calendar, send to Calendar Central, IUPUI Internal Communications, AO 109C (Phone items cannot be accepted)

Monday May 28

MEMORIAL DAY HOLIDAY No Classes, Offices closed

Tuesday May 29

HEALTH INSURANCE INFORMATION: for full-time employees, 2-3pm, UN Roof Lounge, for information 274-4596

Wednesday May 30

MEDICAL CONTINUING EDUCATION: 3rd International Symposium on Neuronal Ceroid-Lipofuscinoses, Hilton at the Airport, also June 1, for information 274-8353

CHILD ABUSE FORUM: "DNA Fingerprinting - Child Abuse," P. Michael Connolly, Medical Genetics Dept, 1:30pm, Wishard Tudor Auditorium, for registration, 630-6307

Thursday May 31

MEDICAL CONTINUING EDUCATION: 2nd annual Stroke Symposium, Conference Center, for information 274-8353

JUNE 1990

Friday June 1

MEDICAL CONTINUING EDUCATION: Orbital Dissection, also June 2, for information 274-8353

MOLECULAR/CELLULAR BIOPHYSICS SEMINAR: "Biophysical and Biochemical Investigations of Trans-membrane Signalling," Allan Butterfield, U of Kentucky Center of Membrane Sciences, 4:30pm, KB 131, for information 274-7772

STADIUM EVENT: IHSAA Boys and Girls Track Championships, also June 2, for information 846-6601

Monday June 4

NEW EMPLOYEE ORIENTATION: for full-time non-hospital employees, 2-4pm, UN Roof Lounge, for information 274-4596

Wednesday June 6

PHILANTHROPY SYMPOSIUM: 3rd annual, "Taking Fund Raising Seriously," through June 8, for information 274-4200

SPEA EXECUTIVE EDUCATION: Public Management Institute, Financial Management for Non-Financial Managers, 9am, BS 4095, through June 7, for information 274-3418

NATATORIUM EVENT: Indy Senior Swim Classic, for information 636-1802

Thursday June 7

GENERAL STUDIES ORIENTATION: for new and prospective students, Noon & 6pm, NU 305, for information 274-5039

PSYCHIATRY SEMINAR: "A Molecular Model that Explains Much of What We Know and What We Don't Know about Schizophrenia (but Which is Probably Wrong)," Steven D. Flanagan, Beckman Research Inst, City of Hope, Noon, PR Conf Rm, for information 274-1362

Friday June 8

MEDICAL CONTINUING EDUCATION: Symposium on Cardiac Arrhythmias, Conference Center, for information 274-8353

MEDICAL CONTINUING EDUCATION: Indiana Ophthalmology Residents and Alumni Day, for information 274-8353

PSYCHIATRY GRAND ROUNDS: "Genetic Strategies in Neuropsychiatry," John I. Nurnberger, Inst of Psychiatric Research, 11am, Larue Carter Auditorium, for information 274-1362

Check the Calendar Daily on Campus Computing Systems:

DCA Users, type CALENDAR; CMS Users, select Option 1, CAMPUS INFORMATION, then CALENDAR.
From Off-campus Modems, 274-2405

CEP EXPO '90

Campus Equipment Plus invites you to an office equipment show:

Place: University Place Conference Center

Location: Room 137

Date: May 23, 1990

Time: 9:30 a.m. to 5:30 p.m.

Displays of copy machines, typewriters, fax machines and microfilm reader/printers will be demonstrated by:

Computer Microfilm Corp.

Eastman Kodak Co.

Lanier Worldwide, Inc.

Office Systems, Inc.

Remex Business Equipment Co., Inc.

Total Business Solutions

VanAusdall & Farrar, Inc.

CopyRite

HPS Office Systems

OCE'-USA, Inc.

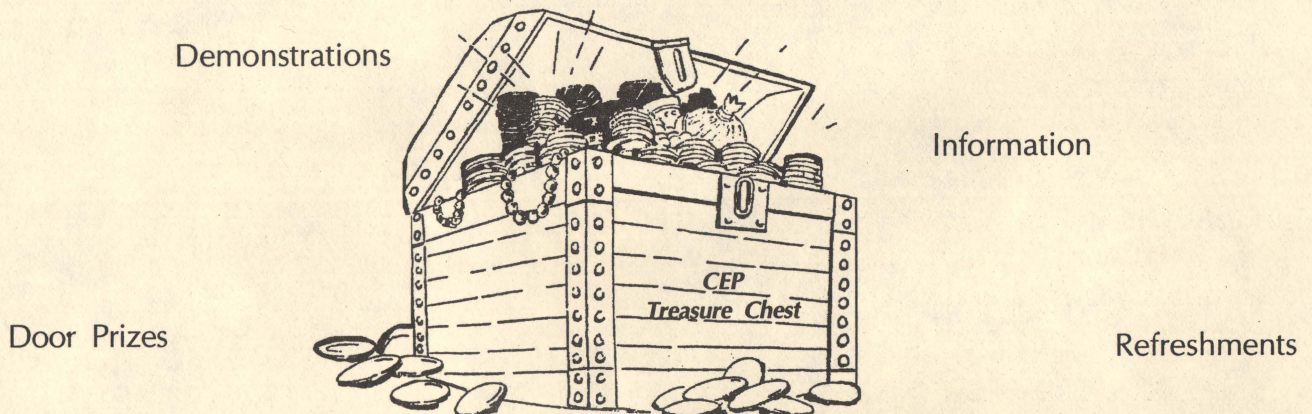
Rex Business Machines

Royal Office Systems

Tronitech

Xerox Corp.

A Treasure of Information and Door Prizes are waiting for YOU!



The CEP staff looks forward to seeing you.

Campus Equipment Plus

Serves All Of Your Office Equipment Needs

- * Consultation
- * Purchase
- * Short or Long Term Rental
- * Card Access Readers
- * Microfilm Reader/Printers
- * Copy Machines
- * Typewriters
- * Fax Machines
- * Supplies
- * Service

Coin-Operated Copier Locations

School of Medicine (IB)	10 Copiers
University Library (LY)	8 Copiers
Law School Library (LS)	4 Copiers
Science & Engineering Library (AD)	3 Copiers
Nursing (NU)	2 Copiers
Education/Social Work (ES)	1 Copier
Herron Library (MB)	1 Copier
Cavanaugh Hall (CA)	1 Copier
Natatorium (PE)	1 Copier
Ball Residence (BR)	1 Copier
Krannert (KB)	1 Copier
Mary Cable (SI)	1 Copier

C E P Staff

Manager

Phyllis Ratcliffe4-8019

Principle Accounts

Melinda Uselman4-9676

Typewriter Leasing/Billing

Becky Hensel4-8789

Copy/Fax Machine Billing

Eileen Eubanks4-9675

Customer Service

Kristi Williams4-4042

Customer Service

Susan Powell4-9669

Supplies/Service

Tina Powell4-8019

Processing

Jennifer Roseman4-8019