

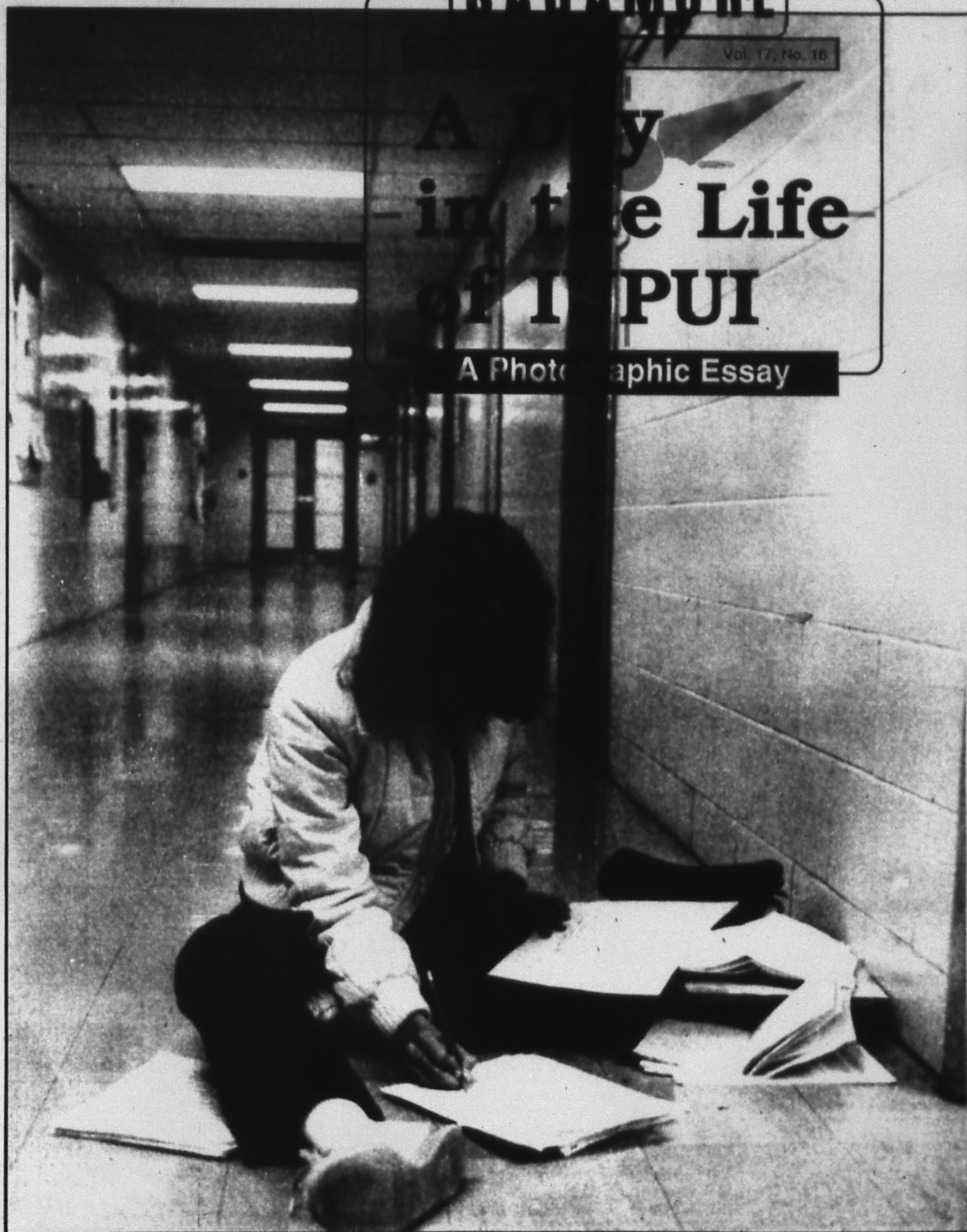
PEI
C2

SAGAMORE

Vol. 17, No. 16

A Day in the Life of IMPUI

A Photographic Essay





COVER: Studying for the inevitable series of pre-exam exams, Connie Tittle, a junior majoring in biology, took to the hallways of the Krannert Building at noon to find a quiet place.

7:30 a.m. Looking east from Ball Residence, the campus looks deserted in the early morning hours, but activity begins much earlier in the Dental Research Institute.

Dr. Michael Park, professor of preventive dentistry, takes a break from the routine he begins daily at 5:30 a.m.

Some research subjects also start the day that early, like Pam, who is participating in a study on the acid produced by certain foods.

Lab technician Tim Noblit, another early worker, sorts microscope slides in preparation for an institute experiment.



A Day in the Life

Monday, November the 16th is a mild day, warm enough to walk to class clad in jeans and a sweater. At the campus of Indiana University-Purdue University at Indianapolis (IUPUI) early risers jog, turn on word-processors, sip coffee, and make various other preparations to start the day.

Around 7:30 a.m., mail carrier Charlene Smith begins sorting through the three heavy canvas bags of mail that have accumulated and need to be delivered to Cavanaugh Hall's professors and departments. Like most Monday, today is a 'heavy' day—after the three canvas bags bulging with press releases and outside mail, there are about four tube filled with interdepartmental mail—memos, administrative notes, and perhaps a personal note or two.

Also this morning, a worker in Riley Children's Hospital cafeteria reports to work and checks the 'money room' where she will fit her cash register for the morning breakfast traffic. Entering, she stares in surprise at the pried-open safe, emptied bags and envelopes. When an officer from the I.U. Police Department arrives, it will be determined that \$2,000 has been stolen. Sgt. Mike Reynolds will spend today investigating the case.

Later in the morning, members of the Search and Screen committees for the dean of the School of Liberal Arts are closeted, as they will be all day, in discussion of the candidates for the position.

Before 9 a.m., Jack Cooney, Herron School of Art development director calls IU School of Law assistant dean Jim Bindley 'in quest of a bequest'; he wants to discover what happened to a sum area philanthropist Roger Gould Wolcott bequeathed the school in his will 30 years ago.

All day today, IUPUI Vice President Gerald Bapho meets at the Lincoln Hotel Conference Center with I.U. President Thomas Ehrlich and others to discuss long range development at IUPUI.

It was just another day in the life of IUPUI.



ICPA Division II
NEWSPAPER OF THE YEAR
1985 and 1986

S·A·G·A·M·O·R·E

Editor in Chief
Publisher
Production Manager
Business Manager
Advertising Manager
Sports Editor

Leslie L. Fuller
Dennis Cripe
Grady Gunter
Erin Dulhanty
Stacy Shrader
Mark White

Photo Editor
Acting News Editor
Opinion Editor
Arts/Entertainment
Free-Lance Editor
Distribution Manager

Kemp Smith
Stanley D. Miller
Sylvia Cunningham
Richard Prope
Theresa Joyce
Steve Hayes

Staff Writers
Production Staff

Nadila Abdi,
Mick McGrath, Lance Utterback
Kasa Bekele
Debbie Esworth, Joel Smock
Brian Hendrickson

The *Sagamore* is an auxiliary enterprise of IUPUI, published weekly during the regular school year. The *Sagamore* is not an official publication of the university, and does not necessarily reflect the views of university administrators, faculty and others.

All *Sagamore* editors are required to be enrolled in at least five IUPUI credit hours. Staff are paid through advertising revenue, the primary source of funding supporting the operation of the

newspaper. The *Sagamore* provides an open forum for the university community. Readers are invited to submit letters of any length and on any topic, although preference will be given to those less than 500 words which are related to matters of interest to the IUPUI community.

Letters must include the writer's name, address and telephone number. Letters must also be dated and signed by the writer for verification purposes. Addresses and telephone numbers

will not be published and the writer's name can be withheld upon request. Anonymous letters cannot be printed. Letters may be edited for clarity and brevity and the editor will reject letters deemed potentially libelous, obscene, inflammatory or in poor taste. Send letters, preferably typed and double spaced to:

The *Sagamore*
425 N Agnes St. Rm. CA 0010
Indianapolis, IN 46202

PHOTO EDITOR: KEMP SMITH
Contributing Photographers:

SERGIO AGUINSKY MICK MCGRATH
PAUL DEBONO ANYA SONIKIN
LESLIE L. FULLER MARK WHITE
GRADY GUNTER ED WILFORD
THERESA A. JOYCE



10:30 a.m. Patricia Heinzelman and Freddie E. Burrus, academic counselors from University Division, take their time at counseling students during early registration for the spring semester.

On the other end of campus, Lt. Col. Robert J. Lens takes a break from the rigors of the early morning routine of the Reserve Officer Training Corps.



7:45 a.m. Exhibiting newfound secretarial skills, third-year dental student Bruce Bales finds out that there's more to dentistry than oral exams.

Central Indiana

Physician-owned emergency group accepting applications for full-time, career-oriented emergency physicians.

Flexible work schedules and excellent benefit package. Part-time and Directorship positions also available. Send CV or contact Sherry Jarnagin, Midwest Medical Management, Inc., 528 Turtle Creek, North Drive, Suite F-4, Indianapolis, IN 46227 (317)783-7474.

PREGNANCY TERMINATION TO 12 WEEKS

*FREE pregnancy test
*Confidential Counseling
*Quality Care

FAMILY PLANNING SERVICES
yearly check-ups, low cost, birth control devices**

1-800-545-2400
CLINIC FOR WOMEN

In Indianapolis 545-2288

In fact, it expires on January 15, 1988, to date (prematernity). © 1987 Apple Computer Inc. Apple and the Apple logo are registered trademarks of and the Macintosh logo is a trademark of Apple Computer Inc.



Buy a printer with your Macintosh and conserve paper.

A Macintosh™ personal computer and an ImageWriter™ II printer will save you hours of time. Not to mention gallons of correction fluid and reams of paper. And, if you buy both now, the first ream

of paper you'll save will have a lovely green glow with Presidents on it. So here's the deal: You'll save a bundle of cash when you purchase an ImageWriter II printer along with your choice of a Macintosh Plus or a Macintosh SE. Either way, you'll be able to turn out beautifully prepared papers. And we'll even try to help you

with a variety of financing options. We feel compelled to tell you, though, that a deal like this can't last forever. So it's a good idea to see your campus microcomputer center today. And join the paper conservation movement.

The power to be your best.™

Access Point, room ET 1030D



11:15 a.m. The willowy, individual figures of the Moving Company, IUPUI's dance troupe, fuse briefly into a coherent whole as they work out in the auxiliary gymnasium in the Physical Education Building.

STATIONERS INC.

RETAIL SALES OPPORTUNITIES

Full and part-time sales positions are available at the following locations. Apply in person to the store manager.

DOWNTOWN

36 N. Pennsylvania St.
220 N. Meridian St.

38TH & MOLLER
5404 W. 38th St.

BROAD RIPPLE
806 Broad Ripple Ave.

86TH & DITCH
1206 W. 86TH St.

If you've always
wanted to be in business,
start one with us.



Were you one of those kids who always had a lemonade stand... or a paper route? Believe it or not, you have the makings of a successful life insurance agent. You see, we at Northwestern Mutual Life have found that it takes enterprising people to make it in the life insurance business. That's why almost half of our agents average over \$40,000 a year. So, if you like being your own boss and setting your own hours like you did with the lemonade stand, come see us. Northwestern Mutual Life is built around people like you.

Contact:

William S. Koch
One North Capitol
8th Floor
Indianapolis, IN 46204
(317) 634-3534

Northwestern Mutual Life
The Quiet Company

A tough act to follow

© The Northwestern Mutual Life Insurance Company, Milwaukee, Wisconsin 1984.

Dooley O'Toole's NOW HIRING

- ☒ Hostess
- ☒ Cooks
- ☒ Waitress
- ☒ Bus/Dish

Flexible hours

Apply in person at

**4624 W. 38th Street
or
2350 W. 86th Street**

**2:00 - 4:00
Monday - Friday**

Time Hauls, IN - Full time emergency position with established multi-hospital group, available now in moderate volume, urban setting hospital in west central Indiana. Skilled team of emergency medicine specialists, all subspecialties represented on medical staff. Flexible scheduling. Excellent compensation with growth potential, based on credentials, experience, and performance. Ample benefits, full malpractice coverage; moving expenses paid. Progressive community of 60,000 known for higher education, trade and commerce, and proximity to Indiana's finest (recreational) area: one hour due west of Indianapolis. For further information, contact:

Sherry Jamigan, Midwest Medical Management, Inc.,
528 Turtle Creek Drive - Suite F-4, Indpls., IN 46227

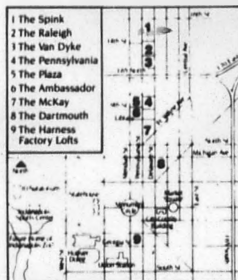
(317) 783-7474



Pennsylvania Place Apartments

Luxury Apartments in Downtown Indianapolis

Nine distinctive buildings
Stylish studios, one & two bedroom apartments
Free parking provided
Free Membership to IUPUI sport facilities
Microwave in every kitchen



**Rental Office
located at
850 North
Pennsylvania
Street**

634-5555

R. Revel Companies, Inc.
Marketing & Management

**Day 9-6
Sat. 10-6 Sun. 12-6**





NOON Junior Carrie Rouster, a medical technology major, finds a sunlit spot to study in the university library, while Jeff Sliter, a freshman majoring in computer technology, relaxes with the Sagamore.

Meanwhile, Janet Dombrow-ski, a non-degree graduate student, prepares an experiment in the chemistry lab.



When you say _____
Birth Control _____
You mean _____
Planned Parenthood _____



10 Convenient Locations

| | |
|-----------------------|--------------------------|
| Midtown 923-4747 | Northwest 876-1774 |
| Castleton | Franklin 736-4311 |
| 849-9304 | Westfield 896-2594 |
| Southside 788-0396 | Martinsville 342-0126 |
| Eastside 899-4731 | Shelbyville 398-0717 |
| Avon 272-2042 | |

Planned Parenthood sets the standard for professional, confidential, low-cost:

- All birth control methods
- Breast exams and pap smears
- Pregnancy testing while you wait
- Gynecological and V.D. exams
- Personal crisis counseling

Education, Counseling and Resource Center: 925-6686

Medicaid and charge cards welcome.

Tree-rific APARTMENTS




\$99.00 Move-In Special*

Apartment living that lets you branch out and put down roots. There's only one way to describe the quiet living and the reasonable rates at **Arbortree TREE-RIFIC!**

2650 Cold
Located: Springs Road
Hours: M-F 9-6
Sat & Sun 11-5
Phone: 924-0725



Arbortree

 Presented by
HALL REAL ESTATE
CORP.

*Certain Conditions Apply



MIDDAY Sophomore business major Patrick Beard studies for an upcoming exam in the Kramert Building. Dr. Angela Barron McBride, Associate Dean for Research, Development and Resources in the School of Nursing, reviews documents to be discussed in meetings later in the day.



A place you'll like



Student rent discount
&
\$75.00 Deposit

- 1 Bedroom, 662 to 700 sq. ft.
- 2 Bedroom, 2 full baths, 1064 sq. ft.
- 3 Bedroom, 2 full baths, 1278 sq. ft.

3300 West 30th St.
925-7579

Mon.-Fri. 9-6
Sat.-10-5
Sun.-1-5

NEWLY REMODELED!

FEATURING

- ✓ Call now for December reduced rent rates!!
- ✓ Easy access to Downtown, Lafayette Square & IUPUI
- ✓ Large floor plans
- ✓ Clubhouse, Swimming Pool
- ✓ Quiet atmosphere
- ✓ On-site laundry facilities & storage
- ✓ Draperies included

Water, sewer & trash pick-up paid



3045-B N. Allen Ave.

THE VARSITY LOUNGE

1517 N. Pennsylvania Ave. 635-9998

Special drink prices everyday!

****Must be 21 to enter with proper ID**

*Lease up?
Fed up?
Move up! to...*

Bedford Park

- 10 minutes from campus
- easy access to I-70
- 3 minutes to airport
- free heat & water

STUDENT DISCOUNT

CALL 241-4103 for more information

EQUAL HOUSING
OPPORTUNITY

SUNRISE

APARTMENTS

*spacious 1, 2, & 3 bedroom
apartments available for
immediate occupancy (furnished
& unfurnished)

**47th & GEORGETOWN ROAD
299-0464**

- * tennis, basketball, volleyball
courts, swimming pool
- * jogging track

- *all adult community
- *garages and fireplaces
available



WAIT IN THE CAR Bruce Oliver and his apparently-bored companion Holly let the car idle in front of the Radiation Therapy Building.

1:15 p.m. Derin York, an employee of the physical plant, puts the finishing touches on a new studio divider for students studying at the Herron School of Art.



Now that you've gotten into IUPUI, IBM can help you get more out of it.

The road to graduation is paved with term papers, lab reports, cramming, all-nighters and, of course, exams.

To ease that journey and awaken your professors to your exceptional abilities, we suggest the newest member of the IBM® Personal System/2™ family: the Model 25 Collegiate.

It's a high-powered personal computer with advanced graphics capabilities, designed to fit on your desk without adding to the clutter. And it comes with a generous 640 KB memory, two 3.5" diskette drives and an aid package every student can appreciate—a big

discount, plus Microsoft® Windows 1.04, Write, Paint, Cardfile, IBM DOS 3.3 and a mouse.

Pop in the load-and-go diskette and your Model 25 Collegiate is set to help you write and revise long papers and illustrate your points by combining words and graphics. So your professors will draw favorable conclusions about your work.

For more information on the Model 25 Collegiate, visit the Access Point on the IUPUI campus; ET1030D, 334-0767.

You'll quickly learn how to get the most out of the IBM Personal System/2.

IBM®

Microsoft is a registered trademark of the Microsoft Corporation. IBM is a registered trademark and Personal System/2 is a trademark of the International Business Machines Corporation. © IBM 1987.

PREGNANT?

• Pregnancy Termination to 12 weeks • Board Certified Gynecologists • Most Reasonable Prices • Confidential • NAF Member
Call Toll Free 1-800-883-3424
LOCAL (317) 241-0215

AFFILIATED
WOMEN'S SERVICES, INC.



**BE AHEAD
OF THE CLASS!**

STUDENTS:
20% off
with this coupon

HEAD HUNTERS SALON
3746 Lafayette Rd.
291-5383
Open Mon-Sat.



Maintaining the routine, keeping the rhythm



MOVIN' THRU NOON

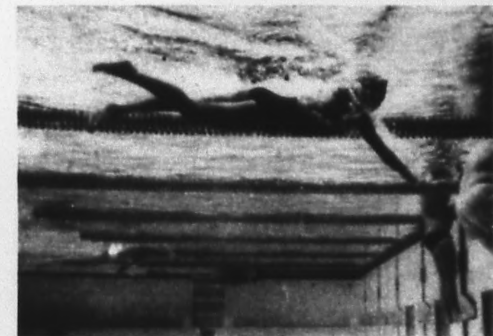
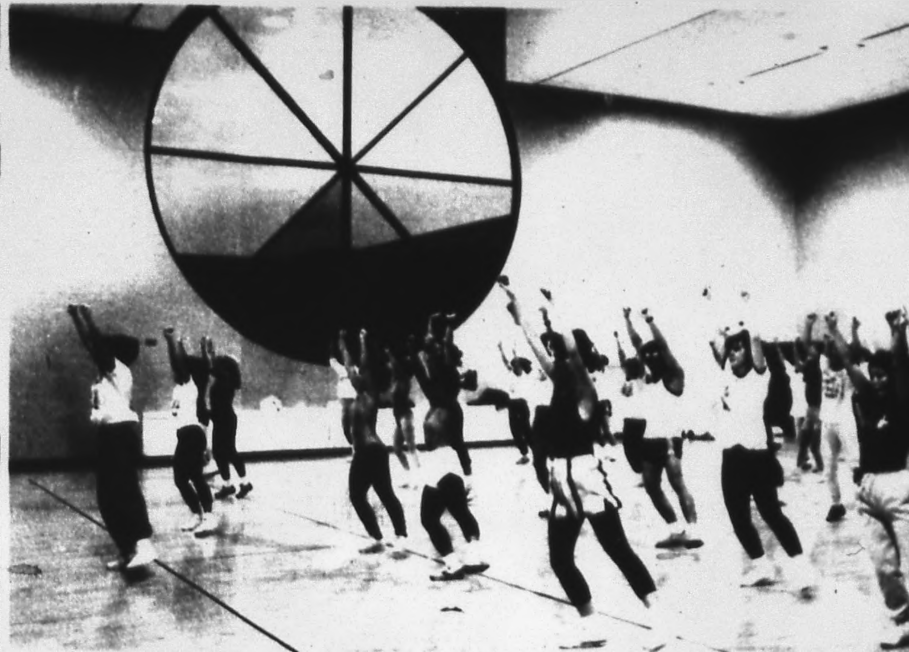
12:35 p.m. Six-week old Abigail Lehlitzner is cradled by her father as her mother gives the lunch order to vender Angela Perkins.

1:30 p.m. Walter Raglan is part of the mop and broom brigade that patrols Cavanaugh Hall.

1:30 p.m. Freshman fine arts major Linda Howard finds the floor in the Herron School of Arts to be the best place to work on her drawings.

NOON Post-doctoral student Usha Gouindarajan works in the Krannert Building chemistry lab.

MIDDAY Kenneth Pummel, having put his five-year old son Travis in the car, pushes helium balloons into his stationwagon.



11:15 a.m. The Moving Company dance troupe works out in the auxiliary gymnasium in the Physical Education Building.

1:15 p.m. Associate painting professor Richard Nickolson gives an animated lecture to a sophomore class at Herron.

6 p.m. A guest takes a swim in one of three pools in the Natatorium - portion of the School of Physical Education. There are six underwater observation windows on this pool.

Waymire Auto Parts
437 W. McCarty
Indpls, IN 46225

638-7131

We stock domestic & import auto parts
Quality parts at hard to beat prices!
(At the corner of West & McCarty Streets)
10% discount with this ad

DISPLAY ADVERTISING DEADLINE
for the December 7 issue
is Tuesday, Dec. 1 at 5:00 p.m.

**TOMORROW'S
OFFICE**

Serving IUPUI!

☐ IBM Word Processing ☐ 25% student discount
☐ True letter quality printing ☐ Resumes, term papers, reports

Call 317-852-2153

IMMIGRATION PROBLEMS?
Do you have questions concerning the new Immigration and Naturalization Laws?
Are you seeking a legal change of visa status?
contact

CANDACE W. TRIVEDI
OF
Richard A. Cole & Associates, Attorneys at Law

(317)849-2668

24-hour answering service, weekends & eves. by appt.
7351 Shadeland Station, Suite 200, Indpls, IN 46256

STUDENT DISCOUNTS AVAILABLE!

THE CEDARS

Three blocks west of Lafayette Road

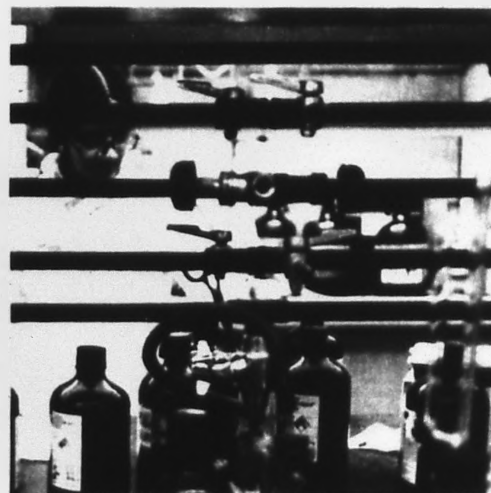
* Studios, 1 and 2 bedroom Apartments *

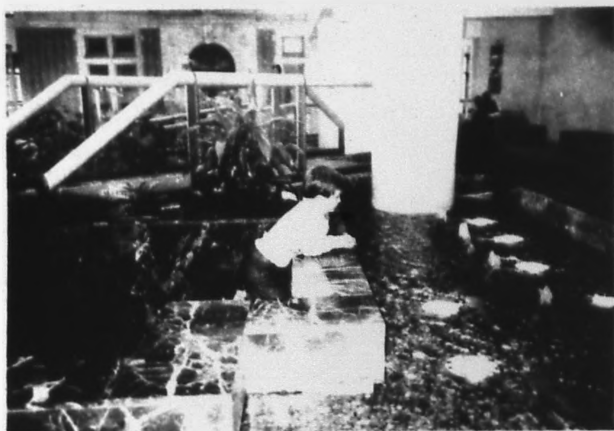
* Prices start at \$240 *

* Close to IUPUI Campus and Lafayette Square Mall

* Laundry facilities in each building *

Open Mon.-Fri. 9:00-5:00
Sat.-Sun. 12:00-4:00
Phone: 293-0122
3503 N. Rybolt Apt. A





1:30 p.m. Brandon Whitley strikes a pensive pose in the lobby of Riley Children's Hospital, where his sister is being treated.

MIDDAY Mary Lambert of the Indiana University Police Department (IUPD) communicates with the department via walkie-talkie.



RESEARCH YOUR OPPORTUNITIES...

Limited number of efficiency, 1 and 2 bedroom apartments available. Don't miss this opportunity to enjoy life close to the heartbeat of downtown Indy!

SHERWOOD TOWER

13th and Delaware

Delaware Court
10th and Delaware •

635-5356

- 10 Min. From I.U.P.U.I. & Medical Center
- Free Private Parking
- Contemporary Adult Living
- Generous Storage Areas
- Laundry Facilities
- Easy Walk To Busline

Developed & Managed by
sycamore group



30 Days Unlimited Tanning Sessions
regularly \$39.95
now **\$34⁹⁵**

12 Sessions Tanning Package
regularly \$29.95
now **\$24⁹⁵**



Indiana University-Purdue University at Indianapolis

IUPUI BOOKSTORES

Spring Semester Opening EXTENDED HOURS

CAVANAUGH BOOKSTORE

SAT Jan. 9 and SAT Jan. 16
8:30 am - 5:00 pm

SAT Jan. 23 to end of semester
10:00 am - 3:00 pm

SUN Jan. 10, 17, 24, 31
2:00 pm - 5:00 pm

UNION BOOKSTORE

SAT Jan. 9
8:30 am - 5:00 pm

Beginning with the Spring Semester 1988, all
Learn & Shop Books will be in Cavanaugh Bookstore.

Indiana University-Purdue University at Indianapolis

IUPUI BOOKSTORES



3:50 p.m. Air Force ROTC students from the 200-level Leadership Lab attend a field training camp in preparation for a camp they will attend between their sophomore and junior years.

Sobering Advice

can save a life

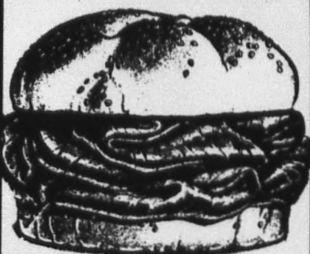
A black and white photograph of a heart pierced by a key. The key is positioned horizontally, passing through the center of the heart. The heart is dark and textured, while the key is metallic and shiny. The image is set against a light background.

ATTENTION!

ATTENTION!

ATTENTION!

If you believe that an area or enterprise on campus worthy of a photo essay was overlooked in this special issue of the SAGAMORE, call Kemp Smith at 274-4008 or Leslie L. Fuller, Editor at 274-3455



TASTE THE ARBY'S *Difference!*



WITH THIS COUPON
**Arby's® Philly
Beef 'n Swiss
Sandwich**

\$149

Offer valid through Dec. 5th, 1987 at Arby's at Lincoln Hotel Food Court. Limit 6. Not valid with any other offer.

WITH THIS COUPON
**Arby's® Regular
Roast Beef
Sandwich**

\$119

Offer valid through Dec. 5th, 1987 at Arby's at Lincoln Hotel Food Court. Limit 6. Not valid with any other offer.



CLASSIFIED AD DEADLINE
is noon Thursday.



Fox Run
FORMERLY TOMAHAWK VILLAGE II

APARTMENTS WORTH HUNTING FOR!

7800 W. 10th • Indianapolis, In • 317 271-FOXX

\$99 Deposit! PLUS \$300 OFF YOUR RENT!

Some Features include:

- convenient to I-70, I-465 & Indianapolis Airport
 - fully equipped kitchens (some with eat-in area)
 - tennis & basketball courts
 - spacious closets and additional storage space
 - separate adult & family areas available
 - laundry facilities
 - cable T.V. available
 - small pets accepted
- 1, 2, 3 Bed
 2 & 3 Bedroom

1, 2, 3 Bedroom Flats &
2 & 3 Bedroom Town Homes

CALL NOW AT: 271-FOXX

OFFER EXPIRES NOV. 10, 1987

NOT TO BE USED FOR ANY OTHER PROMOTION

5 p.m. Relaxing between evening classes, sophomore nursing major Kim McBride and graduate physical therapy student Sharon Gray find a quiet spot to talk on a back stairway in Cavanaugh Hall.

5:45 p.m. Dr. Lowell Inhorn is one of the practitioners at the Family Practice Center at Long Hospital.

6 p.m. Junior medical student Scott Taylor starts out the evening preparing a patient for Nuclear Magnetic Resonance Imaging at Riley Hospital for Children.



EVENING Visitors to the Lincoln Hotel and Conference Center could find themselves in Greg F. Dulin's hands, should they require help.

Our three-year and two-year scholarships won't make college easier. . . just easier to pay for.



Thanks to a three-year ROTC scholarship, 2LT Jim Brown will complete his electrical engineering degree in December 1987.

Even if you didn't start college on a scholarship, you could finish on one. Our scholarship pays for full tuition, fees, \$390/year for books and \$1000 grant each year.

For details, visit the Military Science Department Cavanaugh Hall, Room 335 or call 274-0069/0070/0071



Application Deadline

Two-year--Feb. 1 Three-year--Mar. 18

ARMY RESERVE OFFICERS' TRAINING CORPS

How to break into management with no prior experience.

Become an officer in the Army National Guard. Take our College Student Officer Program part-time while you go to school full-time. Get management experience and a good paycheck every month. And be a Second Lieutenant by the time you graduate. Then you serve just one weekend a month and two weeks each summer. For more information call:

SFC THOMPSON
887-9978



Americans At Their Best.



5 p.m. Kim Mandenhall, a senior in the School of Public and Environmental Affairs, at work in the Women's Studies Office.

7 p.m. Junior members of the Indianapolis Synchronized Swimming Club practice a routine in the I.U. Natatorium Diving Pool, a facility that has regularly hosts the U.S. Synchronized Swimming Trials.



Tan Lines

Student Tanning Special
10 sessions for \$25
with this coupon



5350 West 38th Street
HONEY CREEK PLAZA
(JUST A FEW DOORS EAST
OF CHILDREN'S PALACE)

293-6324

PLEASE CALL FOR AN APPOINTMENT
expires 12-31-87

How much computer
will \$699 buy?



\$500 FREE Software!

*Model with window software - Digital Research
Inc.'s GEM desktop, GEOS, DOSPLUS, Bench2
MSDOS V2.2 - 528K Memory IBM compatible
*Paper white monochrome monitor (16 grey levels)
*Optional RGB color monitor (16 colors) - Tilt and
Swivel monitor stand - PC-XT style keyboard - Joy-
stick port - Speaker with volume control - Serial and
Parallel ports - 3 PC-compatible, full-size expansion
slots - "Quick" Read time clock - 16 to 800K process-
ing (8 MHz) - 300KB double-sided floppy drive
*Optional Second floppy drive or 20MB hard drive
*User manuals - CP/M 86 Software compatibility
*CGA enhanced color graphics software - *Expand-
able to work in network environment for multi-tasking

AMSTRAD
The "Young-friendly" computer

KELLY'S OFFICE PRODUCTS
10th and Arlington
8000 E. 10th Street
Indianapolis, IN 46218
Phone 353-8261

Student Inn

Rooms and Apartments Available

Starting at \$145.00

- *All utilities included
- *Close to campus-Downtown location
across from Sports Arena-2 blks.
from City Market
- *Near IUPUI Express lines
- *Kitchen and laundry facilities
- *Furnished apartments and rooms

Call
639-2764
for information!

359 East Washington Street

"At the Student Inn, we only let students in!"

\$1 OFF

ANY MOEBIUS GRAPHIC NOVEL

WHEN REDEEMED AT:

COMIC CARNIVAL

6265 N. Carrollton 253-8882
In Broad Ripple Village
Hotline 257-1450



Beyond comics. Beyond fiction.
Beyond imagination.
Epic Comics proudly
presents MOEBIUS,
the master of
illustrated fantasy.
At a price beyond
compare.

Offer expires: November 15, 1987

HYUNDAI

"Cars that make sense"

150 IN STOCK

BRAND NEW 1988
HYUNDAI EXCEL
FRONT WHEEL DRIVE

MANY OTHER STANDARD FEATURES

ONLY

\$5495

IF YOU WANT TO
FINANCE WITH
JUST \$240 DOWN
YOUR PAYMENT IS
\$119.29
FOR 60 MONTHS

ALL PRICES INCLUDE DEALER PREP & DESTINATION CHARGES

1st TIME BUYER
18 YEARS & OLDER
& STEADY JOB
FINANCE WITH G.M.A.C.
VERY LITTLE MONEY DOWN

WE NEED FOREIGN CARS & TRUCKS
HIGHEST TRADE ALLOWANCE

DAVE MCINTIRE'S HYUNDAI CENTER

5075 W. 38th
299-9966



8:30 p.m. Senior Oetahun Gemesse, majoring in organizational communication, takes a break from work to study in the university library.

10:15 p.m. Greg Wright, a sophomore from Freedom, Ind., majoring in sports management, watches Monday Night Football while he studies on the second floor of Ball Residence.

A GRAND COMPUTER FOR UNDER A GRAND



**90 DAYS SAME
AS CASH**



It takes only \$877.00 to put a Leading Edge® Model "D"® Single Drive System on your desk. And this low-cost system still comes complete with an unusually thorough list of standard features:

- High-resolution monochrome monitor
- Selectric®-style keyboard
- 8086-2 Microprocessor (4.77 MHz and 7.16 MHz)
- 512K RAM expandable to 768K on the motherboard
- Open socket for 8087 co-processor
- Four full-size IBM®-compatible expansion slots
 - Serial and parallel ports
 - Color Graphics and Hercules™ Monochrome Graphics Emulation
- MS-DOS® and GW BASIC®

**THE
COMPUTER
WAREHOUSE**

Specializing in:

- Bar coding
- Cad/Cam
- Desktop Publishing
- Networking

A division of Computer Systems Corporation

876-0844

6963 Corporate Circle Indianapolis, IN 46278

Leading Edge and logo and Model "D" are registered trademarks of Leading Edge Products, Inc. IBM and Selectric are registered trademarks of International Business Machines Corp. Hercules is a trademark of Hercules Computer Technology Inc. MS-DOS and GW Basic are registered trademarks of Microsoft Corp.

RIVERPOINTE

APARTMENTS

**Free Transportation
Service To:
IUPUI
I.U. Med Center
Sports Center
and
Downtown**

*1-2-3 Bedroom apts.
HEAT AND HOT
WATER INCLUDED
*Health Spa Facilities
*Clubroom w/Big
Screen TV
*Satellite TV available
*24 hr. Laundromat
*Jogging Track
*Pool, tennis
basketball & volleyball
courts.

**2 BR
from
\$389**

638-9869

1152 N. White River Pkwy. W. Dr.
(between 10th & 16th St.)

Mon.-Fri. 9:30-5:30, Sat. 12-4:00

Developed and Managed by **sycomoregroup**

Pre-Christmas APPAREL SALE

25% Discount

* **Sweat Shirts**

* **Jackets**

* **Sweat Pants**

* **Sweaters**

**Monday, Nov. 30 thru
Saturday, Dec. 12**

ALL STORES

Indiana University-Purdue University at Indianapolis

**IUPUI
BOOKSTORES**

CLASSIFIEDS

Call us at 274-3455

CLASSIFIED deadline is
Thursday at Noon

Help Wanted Services

Earn \$400 weekly - 800 per hundred circulars mailed. Guaranteed. Homeworkers needed to perform mail services. Incentive programs available. Send legal size stamped self addressed envelope to United Service of America 24307 Maple Mt. Parkway, Suite #306, Valencia, CA 91355. (1)

Wanted: Twins ages 0-24 months, for evaluation of lung functions. Participants will be compensated. Call Janet Meyers at (317) 274-7208 if interested. (1)

OVERSEAS JOBS - Summer, yr. round. Europe, S. Amer., Australia, Asia. All fields. \$500-\$1000/mo. Lightworking. Free info. Write LIC, PO Box 82-002 Corona Del Mar, CA 92625 (1)

Male models wanted: North portrait photographer seeks handsome hunks for models-on total nudity. Portfolio of pictures in return. Call for interview. David 834-0368. (2)

WANTED - Nice, friendly, clean and dependable salesgirl for German giftshop and bakery. Part time and/or weekends. German speaking a plus. Please apply at the Heidelberg Haus, 7825 Perfection Pike, Indianapolis, IN 46226. (1)

Nannies Needed Now - Nannies needed in New Jersey and New York area. Our agency has you by seat and personally interview with our pre-screened families. High salaries \$150-300 weekly. We also have nanny parties and supply you with lists of other nannies in the area. Yearly employment only. NANNIES PLUS (licensed and bonded agency) call toll free 1-800-782-0078. (2)

Roommates who have taken GRE or GMAT recently. High scores, female \$300.00-\$500.00, after 6 p.m. 646-3682. (3)

GREY part-time opportunity to GAIN EXPERIENCE while marketing FORTUNE 500 Companies' products on campus! FLEXIBLE hours! References given. Call 1-800-943-2788. (3)

HYPNOSIS

for
grade improvement
stage fright
self confidence
effective speaking
taking exams
memory improvement
faster reading
creative writing
841-9077

DELIVERY HELP
NEEDED

apply in person at

Aunt Polly's
Pizza

4407 N. Franklin Road

\$4 an hour
plus 6% and tipsnon-smokers only,
please

Scholarships/Grants for college are available. Millions go unclaimed yearly. For details call 1-800-USA-1221, ext. 0827. (18)

TYPIST: 10 years experience. Rush jobs available. Reasonable rates! 896-9588. (4)

Word processing, typing, term papers, resumes, near Glendale. Broad Ripple. 351-3589. (2)

Typing - Many years experience in law firm and for school papers. Brenda DeAmord 638-8412(H) - 231-7343(W) (2)

Housecleaning - Medical student's wife does housecleaning, experienced, references. 297-5508. (1)

Professional typing, term, research papers on word processor, 789-3435 (1)

TYPIST: Will type term papers and reports. \$1.50/page. Call Julie 841-7528. (1)

Typing/Word Processing Service WORDWORKS. 886-7103. (3)

Experienced typist, Westside. 296-8162. (3)

Typing: Manuscripts, all types academic papers. DS @ \$1.50 pg. 58 @ \$2.00 pg. Editing, punctuation. Papers To Go. 681-7386. (4)

Typing. Reasonable rates. Free pick-up and delivery Speedway area. Thesis, term papers, resumes, manuscripts. Call Janet 298-4720 after 6 p.m., 276-7847 before 6 p.m. (1)

Roommates

Roommate for 2-BR apt., River Woods, N-side area, prefer grad student. \$225/mo plus utilities, after 6 p.m. 646-3682. (3)

Roommate-mature female needed to share a 2 BR, 2 bath with washer/dryer, westside. \$222.50/mo. plus 1/2 utilities. Jan. 1 291-6756. (2)

"Adia, you made
my day!"

Working for Adia has opened a whole new world for me - by giving me the opportunity to meet new people and enjoy the flexibility and variety not possible in a full time job.

- ☐ Set your own schedule, with Adia. You decide when you want to work, a day, a week, a month, as long as you want.
- ☐ Work right in your neighborhood for top pay with top companies.
- ☐ A wide variety of jobs are available, all interesting and exciting - no typing necessary.
- ☐ Earn extra money for those special extras.
- ☐ There's never a fee to you. And Adia offers you the best wage benefit package available.

We also have permanent jobs available.

Call us today and
start tomorrow!
879-2356

3000 W. DuPont Blvd.
Suite 912
Indianapolis, IN 46202

adia

We do more to do it right.

Notices

Baby sitter required: weekday evenings 6-8 p.m. with own transport for six year old. Live in available in roomy private studio. 15 min. from campus. Call Anne 253-7381. (1)

Spring Break 1988 - South Padre or Daytona. Deluxe Condos or Hotel Accommodation. Starting at Low \$149.00 per person for 7 nights. Call 1-800-222-4129. Transportation Available. (2)

Adoption - loving couple unable to have children, wanting to adopt, stable environment, country setting. All expenses paid. Call collect. 812-897-5834. (3)

Renowned authority Dr. B.B. Morris will lecture on optical illusions Wednesday, December 2 in the KB faculty lounge at 7:30 p.m. Sponsored by the Psychology Club. (1)

FOR RENT

Broad Ripple
2 Bdrm.
Art Deco Flat
\$325/mo.

Parquet Floors or Carpet
Laundry
\$99 Deposit

Also 2 Bdrm.
Townhomes
\$375/mo.

259-7166

APTS. FOR RENT

625 Middle Dr.
Historic Woodruff Place
5 minutes to campus!
Beautiful, remodeled apts.
Ldr - 1 & 2 bedrooms
carpet and hardwood floors.
Some with private balconies;
Heat paid in most units;
furnished and unfurnished
available.

Prices range from \$245-\$19/mo.

Open 10-6 pm 631-8333/872-4950

HELP WANTED

WHALING STATION



THE WHALING STATION
is looking for sharp individuals to fill positions in our restaurant.

We now have positions for
foodservers, cocktail
waitresses, hostesses,
cooks & busboys.

Above average earnings available.
Apply in person on Wednesday between 2-4 p.m.

3650 W. 86th St.

Personals

Jan - Thank you for the happiest time of my life. Jeff. (1)

Help Wanted

Cleaning person needed for office cleaning M-F. Approx. 3-4 hours per evening. Call 783-8638. (2)

For Rent

Loosely furnished 3BR apartment for rent. From Dec. 15 to March 15 or longer. Phone (317) 846-5625. (1)

Room for rent, one block from Butler. Utilities, kitchen, and laundry included at \$175/mo. Call Beth at 283-1824. (1)

5 room apartment, Garfield Park, utilities, appliances, furnished, redecorated, married. 787-6215. (1)

For Sale

2558 Home (THE KNOLL), 2BR, 2 1/2 bath townhouse with finished basement. \$78,000. 293-5592. (1)

CLASSIFIED AD
DEADLINE

is
noon Thursday

FOR RENT

• Free Utilities •

Downtown 1 Bdrm.
Art Deco

- Hardwood Floors
- Laundry
- No Deposit

\$275/mo. 923-3005

SPORTS WRITERS
WANTED

Call 274-4008
and ask for
Mark White.

available
positions

We are seeking motivated individuals who have a desire to earn exceptional money, and who are goal-oriented. Earn up to \$8.50 per hour working part-time evenings marketing our product by telephone.

Call 841-7988 and ask for Mr. Womack

- S - Share expenses - Roommates welcome in 2 & 3 bdrms.
 - T - Tell your friends and earn referral fees
 - U - Under \$200.00 each
 - D - Decorate your own apartment
 - E - Everything you need close by
 - N - Near IUPUI & PCI - on the bus line
 - T - Twenty-four hour on site maintenance
 - S - Spacious floor plans - fully equipped kitchens, carpet and draperies
- Orleans Court
34th and Moller
293-8078

CLOSE THE SHOW



10:08 p.m. Michelle Kaminaki complains to her best friend Michelle, "They're taking my picture!" Kaminaki is in the hall on the fourth floor of Ball Residence to allow her roommate to sleep.

10 p.m. Sandra J. Rush, a senior in electrical engineering, prepares for bed in Ball Residence.

10:10 p.m. Michelle Liston earns \$12 typing a paper while her friend, Tara Buck, watches Monday Night Football in Liston's room in Ball Residence.

HEADED HOME

Physical plant employee Otis Frazelton is the last act at Cavanaugh Hall.



Off Campus Housing For Students, Faculty & Staff

Park Lafayette



Just ten minutes northwest of the main campus, Park Lafayette offers suburban living on 21 acres of well-maintained, landscaped lawns.

Utilities are furnished in the apartment units. Coin operated laundry facilities are centrally located on the complex. Tennis, basketball, softball, and volleyball facilities and jogging paths are adjacent to Park Lafayette.

Parking is plentiful. Shopping is nearby along with Lafayette Square, a major shopping center located approximately two miles north of the complex.

Park Lafayette rates:

| | |
|-------------|------------------|
| Apartments: | |
| 1 Bedroom | \$254** |
| 2 Bedrooms | ***\$267-\$302** |
| 3 Bedrooms | \$319 |

| | |
|-------------|--------------|
| Townhouses: | |
| 2 Bedrooms | \$214-\$255* |
| 3 Bedrooms | \$239-\$286* |
| 4 Bedrooms | \$268-\$301* |

Key: *With Basements,
**Includes all utilities
***Includes Heat and Water

Managed by IUPUI Real Estate Department
3621 Lawnview Lane, Indianapolis 46222, (317)635-7023

Shoreland Towers



Located on North Meridian Street, Shoreland Towers is a 9-story apartment building for IUPUI students. It is in close proximity to IUPUI'S 38th Street Campus and a daily shuttle service to the main campus giving students timely access to their classes.

At Shoreland your security is our concern. We offer a locked building with security provided by IUPUI Police Department. Shopping and recreation are within walking distance or if you prefer, both city bus route and intercampus shuttle are at Shoreland's door. Off street parking and rental car ports are available.

Other amenities for tenants include an in house laundromat, cable TV connections and storage facilities.

ALL UTILITIES FURNISHED!

Shoreland Towers rates:

| | | |
|---|--|---------------|
| Apartments | | |
| Shared Rooms(2 students to a room) -- Furnished | | \$160/student |
| Efficiencies | | |
| Combination Kitchens | | \$198 |
| Full Kitchens | | \$214 |
| 1 Bedroom | | |
| Combination Kitchens | | \$262 |
| Full Kitchens | | \$287 |
| 2 Bedrooms | | \$332-\$466 |

Managed by IUPUI Real Estate Department
3710 N. Meridian St., Indianapolis 46208, (317)925-4540