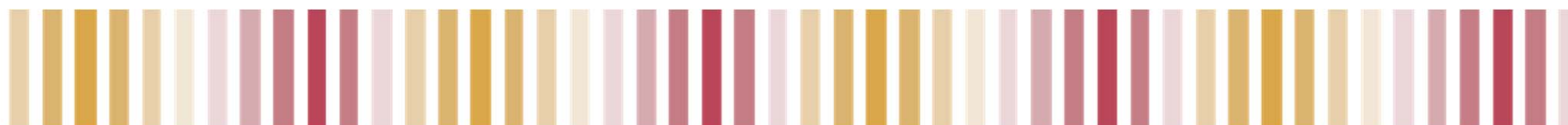


INDIANA UNIVERSITY SCHOOL OF  
LIBERAL ARTS AT IUPUI

# FACULTY ASSEMBLY

**2013**



IDEAS INSPIRATION IMPACT

# AGENDA

1. Call to order at 2:00 p.m. sharp--Enrica Ardemagni (1 minute)
2. Approval of the minutes from April 19, 2013 (1 minute)
3. President's remarks--Enrica Ardemagni (3 minutes)
4. Introduction of new faculty and staff members (40 minutes)  
[Chairs and Directors: Please keep your introduction(s) to a maximum of  
*2 minutes* per new faculty or staff member]



# AFRICANA STUDIES

**2013**



IDEAS INSPIRATION IMPACT



Clifton D Morlan  
Administrative Secretary



IDEAS INSPIRATION IMPACT

\*

# AMERICAN STUDIES

**2013**



IDEAS INSPIRATION IMPACT



## Raymond Haberski

Visiting Professor, American Studies  
Program

PhD, Ohio University, 1999

MA, University of Albany, 1992

BA, University of Albany, 1990

Academic interests: American Studies,  
U.S. Intellectual History, American  
cultural history, American religious  
history, transnational intellectual  
history, civil religion, American  
Catholic history, just war theory



IDEAS INSPIRATION IMPACT

\*

# ANTHROPOLOGY

**2013**



IDEAS INSPIRATION IMPACT



Matthew Rowe

Future Faculty Teaching Fellow

PhD Candidate, Indiana University

MA, Indiana University, 2011

BA, University of Southern Maine,  
2006

Academic interests: Archaeology  
Zooarchaeology, Environmental  
Science



IDEAS INSPIRATION IMPACT

\*



# DEAN'S OFFICE

**2013**



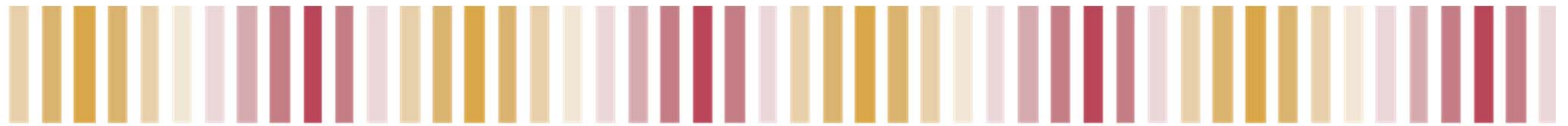
IDEAS INSPIRATION IMPACT



Nicole D Collins  
Assistant Director of Student Records



Mary Lee Cox  
Grants Coordinator



IDEAS INSPIRATION IMPACT

\*



Angela M Fettig  
Receptionist



Teddi Gallagher  
Joint Advisor, Liberal Arts/University  
College



IDEAS INSPIRATION IMPACT

\*



David L Heard  
Director, Office of Career  
Development



Dawn Wheeler  
Assistant Director, Office of Career  
Development



IDEAS INSPIRATION IMPACT

\*

# ECONOMICS

**2013**



IDEAS INSPIRATION IMPACT



Kevin Snapp  
Administrative Secretary



IDEAS INSPIRATION IMPACT

\*

# ENGLISH

**2013**



IDEAS INSPIRATION IMPACT



Tracy A Donhardt

Lecturer, English Writing Program

MA English, Indiana University (IUPUI)  
2011, with Teaching Writing Certificate  
BA English, Indiana University (IUPUI),  
2004

BA Journalism, Indiana University  
(IUPUI), 2004

Academic interests: Writing, Literacy,  
Student Engagement,  
Associate/Adjunct Faculty Issues, Social  
Justice in the Classroom, Cultural  
Studies



IDEAS INSPIRATION IMPACT

\*





## Patricia F Harvey

Visiting Lecturer, English Writing Program

Master of Arts, English, Indiana University (IUPUI), 2012

Certificate of Teaching Writing, Indiana University (IUPUI), 2012

Bachelor of Arts, English/Creative Writing, Indiana University (IUPUI), 2005

Academic interests: Teaching Writing



IDEAS INSPIRATION IMPACT

\*



## Jennifer Mahoney

Lecturer, English Writing Program  
Interim Director, University Writing  
Center

MA in English, Butler University, 2003  
BA in French and English, Indiana  
University-Bloomington, 1994

Academic interests: Business Writing,  
Academic Writing, British Literature,  
French Literature and Language



IDEAS INSPIRATION IMPACT

\*



## Kyle Minor

Assistant Professor, English

MFA, Iowa Writers' Workshop, 2013

MFA, The Ohio State University, 2007

MA, Antioch University McGregor, 2003

BA, Anderson University, 1998

Academic interests: Fiction Writing,  
Narrative Nonfiction, The Essay, Poetry,  
Screenwriting, 20th and 21st Century  
American Literature, Literary Publishing,  
Contemporary Haitian Culture, Haitian  
Diasporic Literature, Southern Literature,  
Creative Writing Theory & Pedagogy



IDEAS INSPIRATION IMPACT

\*



## Honnor Lenn Orlando

Visiting Lecturer, English for Academic Purposes Program

MA, University of Hawai'i-Manoa, 2003

BA, Gustavus Adolphus College, 1996

Academic interests: English as a Second Language; Japanese language studies; English for Specific and Academic Purposes (ESP/EAP)



IDEAS INSPIRATION IMPACT

\*



Jacqui Anne Weeks

Visiting Assistant Professor, English

PhD, University of Notre Dame, 2012

MA, University of Notre Dame, 2008

MA, University of Aberdeen, Scotland,  
2005

Academic interests: English literature; fair  
poetry, development of British poetics;  
fairy tales; children's literature; gender  
studies



IDEAS INSPIRATION IMPACT

\*

# GEOGRAPHY

**2013**



IDEAS INSPIRATION IMPACT





## Vijay Lulla

Assistant Professor, Geography

PhD, Indiana State University, 2010

MA, Indiana State University, 2005

BE, Maharaja Sayajirao University,  
Baroda, India, 2000

Academic interests: Urban geography,  
world regional geography;  
computational geography; remote  
sensing



IDEAS INSPIRATION IMPACT

\*

# HISTORY

**2013**



IDEAS INSPIRATION IMPACT





Sarah Rowley

Future Faculty Teaching Fellow

PhD (expected), 2014

MA (Gender Studies) Indiana  
University, 2011

MA (History) Indiana University, 2010

BA University of Arkansas, 2006

Academic interests: Cultural and social  
history of the United States, women's  
and gender studies, twentieth-century  
U.S. political history, gender and  
politics, feminist theory, conservatism,  
reproduction, social movement  
history, satire and political activism



IDEAS INSPIRATION IMPACT

\*

# INDIANA CENTER FOR INTERCULTURAL COMMUNICATION

**2013**



IDEAS INSPIRATION IMPACT



Kelly L Sumner

Visiting Research Associate, Indiana  
Center for Intercultural  
Communication

BA, English, Indiana University (IUPUI),  
2004

BS, English Secondary Education,  
English, Indiana University, (IUPUI),  
2004

Academic interests: TESOL,  
composition, literacy, and applied  
linguistics



IDEAS INSPIRATION IMPACT

\*



## Ana Ines Traversa

Visiting Research Associate, Indiana  
Center for Intercultural  
Communication

MA, University of  
Massachusetts/Amherst, 1995

Academic interests: Healthcare  
Literacy, Healthcare Discourse, and  
Health Communication in general;  
Intercultural Communication,  
especially Intercultural Rhetoric; Text  
Linguistics; Research Methodology in  
Applied Linguistics; English for Specific  
and Academic Purposes (ESP/EAP)



IDEAS INSPIRATION IMPACT

\*

# INSTITUTE FOR AMERICAN THOUGHT

**2013**



IDEAS INSPIRATION IMPACT



## Jeffery Duvall

Assistant Editor, Frederick Douglass  
Papers

PhD, History, Purdue University, 2007

MA , History, Indiana University  
(Indianapolis), 1995

BA, English and Japanese History, Asian  
Studies, Earlham College, 1982

Academic interests: U.S. Social History  
(19th-20th Century), Women, Family,  
Rural Life, Gender, Ohio River Valley,  
Tobacco Culture. Tudor/Stuart  
(England) and Medieval France



IDEAS INSPIRATION IMPACT

\*



Megan Liu  
Administrative Assistant



IDEAS INSPIRATION IMPACT

# INTERDISCIPLINARY PROGRAMS

**2013**



IDEAS INSPIRATION IMPACT





**Kyle Gottfried**  
Senior Administrative Secretary,  
Individualized Major Program,  
International Studies Program, and  
Women's Studies Program



IDEAS INSPIRATION IMPACT

# LIBERAL ARTS

**2013**



IDEAS INSPIRATION IMPACT



Charmayne "Charli"

Champion-Shaw

Lecturer, Liberal Arts

Director of the Office of American Indian  
Programs

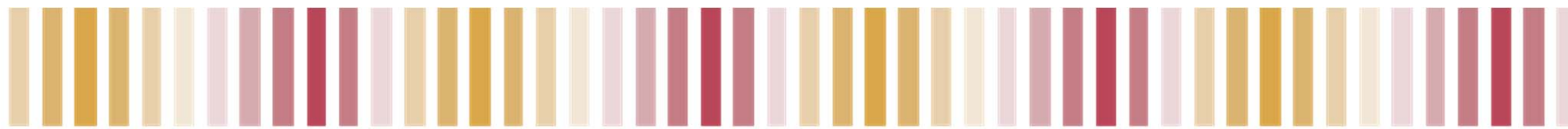
Director, Native American Studies  
Program

MA, Communication Studies, Indiana  
University (IUPUI), 2011

BGS, General Studies, Indiana University  
(IUPUI), 2007

AAGS, General Studies, Indiana  
University (IUPUI), 2005

Academic interests: Identity &  
Community, Social Justice, Media  
Studies, Interpersonal Communication,  
Intercultural Communication



IDEAS INSPIRATION IMPACT

# NATIONAL COUNCIL ON PUBLIC HISTORY



Stephanie Rowe  
Program Manager



IDEAS INSPIRATION IMPACT

# THE POLIS CENTER

Gautham Bavandla

Research Associate, Research  
Programmer

Melissa Gona

Research Associate  
Data and Resource Manager

Kavya Urs Beerval Ravichandra

Visiting Research Associate  
GIS Specialist

Deeksha Kapoor

Visiting Research Associate

Laura E. Danielson

Research Associate  
Communication Analyst

Richard Ryan Stevens

Research Associate, GIS Analyst

Lou Ann Glidden

Administrative Secretary

Carlie Turner

Administrative Support Assistant

**2013**



IDEAS INSPIRATION IMPACT

# POLITICAL SCIENCE

**2013**



IDEAS INSPIRATION IMPACT



## William D Blake

Assistant Professor, Political Science

PhD, University of Texas, 2013

MA, University of Texas, 2012

AB, College of William and Mary, 2004

Academic interests: Judicial  
Decisionmaking, Comparative  
Constitutionalism, American Political  
Development, Legal Theory, and  
Religion and Law



IDEAS INSPIRATION IMPACT

\*



Hicham Bou Nassif

Future Faculty Teaching Fellow

PhD candidate, Political Science ,  
Indiana University

Research Doctorate, International Law  
and Legal Studies , University of the  
Holy Spirit (USEK), 2006

Masters Degrees, Political Science,  
Saint Joseph University, 2002

Public Law, La Sagesse University, 2000

Bachelors Degree, Law, Lebanese  
University, 1999

Academic interests: civil-military relations  
in authoritarian regimes, transitions to  
democracy, civil wars, ethnic conflicts,  
and international relations theory



IDEAS INSPIRATION IMPACT

\*



# RELIGIOUS STUDIES

**2013**



IDEAS INSPIRATION IMPACT



## Glenn Snyder

Visiting Lecturer, Religious Studies

PhD, Harvard University, 2010

AM, Harvard University, 2005

MAR, Yale University, 2002

BA, Indiana University, 1998

Academic interests: New Testament  
and Early Christianity; Pauline Epistles  
and Classical Studies



IDEAS INSPIRATION IMPACT

\*

# SOCIOLOGY

**2013**



IDEAS INSPIRATION IMPACT



Kenzie Latham

Assistant Professor, Sociology

PhD University of Florida, 2011

BA (summa cum laude) University of  
Florida, 2005

MA University of Florida, 2007

Academic interests: Health and aging,  
disability and mobility, health  
disparities over the life course, chronic  
disease/comorbidity, health behaviors



IDEAS INSPIRATION IMPACT

\*

# WORLD LANGUAGES AND CULTURES

**2013**



IDEAS INSPIRATION IMPACT



## Julie A Armstrong

Visiting Assistant Professor,  
American Sign Language / English  
Interpreting Program

BS Ball State University 1988  
MA Ball State University 2003  
PhD Ball State University 2011

Academic interests: Cognitive  
Linguistics, Interpreting and  
Translation, Second Language  
Acquisition, and Bilingualism



IDEAS INSPIRATION IMPACT

\*



Laura Brant

Future Faculty Teaching Fellow,  
Classical Studies

BA in Latin, Miami University, 2006

BA in Classical Studies, Miami  
University, 2006

MA in Greek, Indiana University, 2009

Academic interests: Greek and Roman  
Novel Ancient magic, Silver Age Latin  
literature, Greek second sophistic  
literature, Roman provincial life,  
Egyptian languages



IDEAS INSPIRATION IMPACT

\*



Kathryn Lauten

Lecturer, French

PhD, Romance Languages and  
Literatures: French, University of  
Michigan, 1997

MA, Romance Languages and  
Literatures: French, University of  
Michigan, 1997

BA, French Literature, Dartmouth  
College, 1989

Academic interests: French and  
Francophone studies; Caribbean  
literature; "Post-colonial"  
Francophone Literature and Film



IDEAS INSPIRATION IMPACT

\*





Laura M. Smith

Lecturer, American Sign  
Language/English Interpreting Program

MS, McDaniel College  
BA, Gallaudet University

Academic interests: ASL pedagogy,  
Deaf studies - research and developing  
courses, Comparative research - deaf  
and Appalachian communities.



IDEAS INSPIRATION IMPACT

\*



## Elizabeth Thill

Assistant Professor, Classical Studies

PhD, Classical Archaeology, University of North Carolina, Chapel Hill 2012

MA, Classical Archaeology, University of North Carolina, Chapel Hill 2007

BA Classical Archaeology, University of Michigan, 2005. Highest Honors, Phi Beta Kappa.

Academic interests: Roman sculpture, Roman architecture, numismatics, urbanism, construction of identity in Roman art and literature, state formation



IDEAS INSPIRATION IMPACT

\*



Jose L Vargas-Vila

Lecturer, Spanish

MA in Inter-American Studies,  
University of Miami, 1992

BA in International Relations, Minor in  
Political Science, Florida International  
University, 1978

AA Economics and Accounting, Miami  
Dade College, 1976

Academic interests: Latin American  
Studies and International Relations;  
Economics

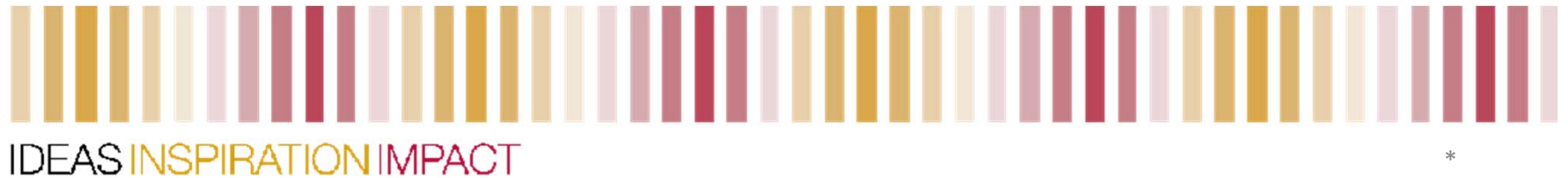


IDEAS INSPIRATION IMPACT

\*

# AGENDA

5. Dean's remarks: State of the School and Q&A--William Blomquist (25 minutes)



# AGENDA

## 6. Committee Reports (see website for materials)

### a. GCC (Carrie Foote) (10 mins)

1. Approval of Philosophy 5 year MA/BA Proposal
2. Approval of Graduate Certificate Proposal for Medical Humanities
3. PhD Minor in Bioethics

### b. IFC (Daniella Kostroun/David Craig) (2 mins)

## 7. Old business



IDEAS INSPIRATION IMPACT

\*

# AGENDA

## 8. New business

a. David Heard, Director of Career Development (10 mins.)

b. Christine Fitzpatrick, Special Assistant for Strategy and Planning (30 mins.)

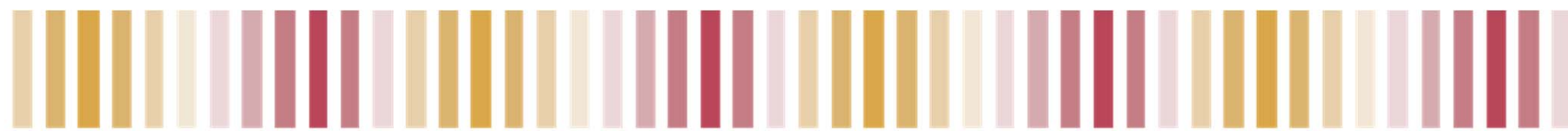
## 9. Motion to adjourn (1 minute)

## 10. Adjournment by 4:00 p.m.



IDEAS INSPIRATION IMPACT

\*



IDEAS INSPIRATION IMPACT

\*