

**Enrollment Management Council**  
June 23<sup>rd</sup> 2006  
Minutes

**Minutes**

- Minutes for the April meeting were previously distributed and are available by visiting <http://registrar.iupui.edu/emc/emc-meetings.shtml>

**Announcements from the Chair**

- **Undergraduate Admissions**

- **Summer 2006**

- Beginner admits: -71 (-26%)
    - Transfer admits: +103 (+15%)

- **Fall 2006**

- Beginner admits: +138 (+5%)
    - Transfer admits: + 5 (+1%)
    - We are cautiously optimistic about the Fall beginners. The overall quality is up (see below), though the number of African-American admits is down. There is a national trend for students to apply to more institutions than they did in the past, so we have less ability to rely on our historic yield rate to project how many new admits will enroll. We are working with Orientation to get an idea of this, though we are still fairly early in the Orientation/enrollment cycle and data are not comparable.
    - Information on quality for Fall beginners appears below. For more Admissions data visit [http://www.imir.iupui.edu/point\\_in\\_cycle/](http://www.imir.iupui.edu/point_in_cycle/)

- **International Admissions**

- Fall 2006 data appear below
  - There has been a surge in the number of graduate admissions in the past week. International Affairs will get them processed as quickly as possible as the deadline for getting international students the necessary visa and related matters addressed in order to allow their enrollment is drawing very near.
  - Please be aware that you can access point-in-cycle reports on international applications to your school at [http://www.imir.iupui.edu/point\\_in\\_cycle/AppAdd3\\_IA\\_ps.asp](http://www.imir.iupui.edu/point_in_cycle/AppAdd3_IA_ps.asp)

- **Graduate Admissions**

- Fall 2006 data appear below

- **Registration Update**

- Enrollment totals remain a concern, especially for undergraduates. We rely on the schools to contact their new admits and returning students who have not yet enrolled to encourage their registration.
  - Mary Beth Myers is collecting responses from the schools on steps they have taken to contact their students. She is also interested in when any special contacts were made so better to track results in school-specific enrollments. Becky emphasized that providing Mary Beth with this information throughout the summer will be very helpful in preparing materials for incoming Executive Vice Chancellor Uday Sukhatme.

**Net Change in Fall 2006 Headcount from 2005 - Undergraduate Enrollments  
at Indianapolis by Point-in-Cycle Date**

Date	Wk#	Degree-Seeking	Non-Degree	Total UG
Apr 30	18	-690	80	-610
May 7	19	-667	79	-588
May 14	20	-673	92	-581
May 21	21	-663	96	-567

May 28	22	-651	111	-540
Jun 4	23	-627	117	-510
Jun 11	24	-579	115	-464
Jun 18	25	-745	110	-635

Last year we picked up 225 in sophomore heads for this week. This year we added only 79.

In Spring 2006 we finished down 433 freshmen (-10.7%) and 501 sophomores (-9.7%).

- We are up 332 Graduate degree-seekers (+18.3%).
- IMIR has prepared a report on undergraduate student headcount for the Indianapolis campus which includes:
  - A projected headcount at census based on current Point-in-Cycle data
  - Trends in Registration Cycle (weekly totals of when undergraduates registered in 2005 and 2006)
  - Fall Enrollment status of students enrolled for the prior Spring term
  - A summary of undergraduate admissions Point-in-Cycle
  - Kathy highlighted the shortfall in freshmen and sophomores. It appears that while there is a delay in students' enrollment, the decline in these two classes is more likely a reality. Becky noted that this is probably due, at least in part, to the smaller freshmen and sophomore classes last Spring (see above).
  - Declines in students in the first two years will be of special concern to those units with significant reliance on enrollment service courses.
  - Gayle Williams reported University College was seeing a decline in the number of prospective Business and Psychology students. Herron was doing very well and there is continued strong demand for a number of the health professions including a waiting list for the summer bridge program.
  - Marti Reeser reported that a study of students who applied for admission into the campus' radiography program (for years entering in 1998 to 2003) found that 30.9% of the students who were not accepted into the program completed another two-or-four year degree. An additional ten students (2.3%) should have completed their degrees this year and fifty others (11.4%) were still enrolled.
  - Becky suggested a more detailed review by looking at the pipeline of prospective and incoming beginners by major. Such a review could help us better understand the differences between high demand programs such as Nursing and others so that students could be counseled earlier on alternate educational tracks should they not be admitted to their preferred majors.

The full report is attached below.

- Registration totals by school as of June 18<sup>th</sup> are attached below. Totals are updated weekly on [http://www.imir.iupui.edu/point\\_in\\_cycle/](http://www.imir.iupui.edu/point_in_cycle/) and additional detail is provided regularly on <http://registrar.iupui.edu/enrollment.html>.

## **Status Report on Enrollment Forecasting and Capacity Analysis** *Kathy Burton*

- Responses have been assembled and packets with campus- and school-specific information will be distributed at the meeting.
- Guidance in reading and interpreting the data will be provided at the meeting. It is essential that all school representatives attend this meeting.
- The reports were provided to each Dean. We ask you to work with your dean to do the following:
  - Review the data over the coming weeks and modify it, as appropriate, from a school-level and with a more realistic perspective. This includes assumptions regarding capacity, especially in units with enrollments close to or above the schools' summarized capacity. Notify Kathy Burton if changes are made.
  - We will review the data again after the Fall census to see how closely the projections were and will include both your adjusted totals and the Fall official numbers in running the reports again. (Each year we hope to better refine the reports and make the data even more useful.)

- In addition to it being very useful for planning by the schools, it is very important for you to clearly target areas where you have capacity for growth and wish Enrollment Services to focus (with your support) our recruiting efforts.

We will be providing a summary of responses from schools regarding their desired diversity at a later date.

## Review of the Year's Activities and Developing 2006-2007 Priorities and Action Plan

Becky Porter

Members reviewed the 2005-2006 Priorities and Action Plan. In all cases they supported retaining the general goals while making some recommendations for changes or additions for the list for 2006-2007. These are included below in **bold** print. Comments on individual goals appear in *italics*.

1. Assessing enrollments in the context of longer-term implications and developing short-term plans to attract and retain students in enrollment patterns that will provide a fiscally responsible bridge to our longer-term goals;
  - Review enrollment and retention data to acquire necessary understanding of trends
  - Determine additional data needs and their usage
2. Developing program-specific enrollment goals reflective of the schools' objectives and missions, community need, resources and capacity, and future program developments (i.e., the emergence of new, often interdisciplinary fields);
  - Review the programmatic mix and new program development based on community needs
  - Determine program capacity (number of faculty, number of majors that can be handled)
  - Assess facilities and classroom utilization

*We will be studying utilization patterns following implementation of the new class-time modules*
3. Expanding IUPUI's post-baccalaureate enrollments in absolute and relative terms, in part by attracting highly-prepared and talented students as undergraduates with the prospect of their continuing their education at the graduate level;
  - Focus on evolving list of areas of excellence, but not to the exclusion of other programs
  - **Promote strategic use of financial aid and scholarships to attract and retain highly prepared and talented students while addressing the issues of need-based aid**
  - **Advocate for adequate resources to support both undergraduate and graduate education**

*IUPUI has had significant growth in graduate enrollment in recent years. We need to be more active in making decisions in this area rather than simply seeing how enrollment patterns may shift.*
4. Enhancing relationships and raising expectations of major sources of our students: Ivy Tech and high schools;
  - Align high school graduation requirements with college matriculation expectations so as to increase expectations and improve quality
  - Increase number of articulated courses and programs to ease transfer process
  - Continue articulation work through Passport, academic units, and Enrollment Services
  - Ease transfer process through efforts of Enrollment Services, Orientation, academic units, Transfer Committee, and Council on Graduation and Retention
5. Maintaining and enhancing our commitment to diversity and internationalization of the campus;
  - Reflect mission-related global distribution and intentional proportions of undergraduate, graduate, and post-graduate enrollments
  - Review current enrollment by these populations, set targets for increasing enrollment, and identify additional recruiting/retention steps, both centrally and within the schools
6. **Encouraging formal and informal educational opportunities and programs for learners through use of new program formats;**

- **Advocate for offerings outside of traditional formats and calendars**
- **Promote incorporation of technology within learning opportunities**
- **Support emerging patterns of engagement with learning**
- **Promote coordination of campus and academic unit student support services**
- **Coordinate with the Council on Life Long Learning**

7. Empowering offices and individuals to take direct actions in a timely manner that will achieve the goals we have set for ourselves based on the effective use of information for both planning and decision-making;

- Educate the campus as to the importance and use of enrollment management by development of new tools and templates and provision of training

8. Improving and expanding communications with students using a variety of methods and media;

9. Improving and expanding communications and collaborations between and among units and other groups dealing with Enrollment Management issues

Cutting across all of these:

- Identification and promotion of best practices
- Development of benchmarks and setting interim and longer-term goals  
*See especially 2 and 7 above*
- Assessment of continuing student satisfaction and success
- Use of new Student Support Services Performance Indicators (as they become available)
- Assessment of alumni to determine student success

Benchmarks and activities for the 2005-2006 year appear in the complete Priorities and Action Plan document <http://registrar.iupui.edu/emc/action-plan.pdf>.

The more detailed document will be revised for 2006-2007 based on these suggestions. Appropriate benchmarks will be added and the full document sent to members for review and comment.

### **Initiatives to Encourage Fall 2006 Enrollment A//**

- Discussion of school-level initiatives members are planning to use to encourage their continuing students to register.
- Becky told the group that a list has been run of students whose Fall enrollment is being blocked due to past-due charges. Financial Aid and others in Enrollment Services are reviewing the list, especially for the first-time, full-time population, to see what might be possible in terms of additional support to help these students settle their past-due charges and enroll.
- Martel Plummer reported that Nursing is following up with its prospective and current students, especially those who may be scholarship recipients.
- Kim Nyugen reiterated the importance of being attentive to possibilities for additional external funding for students, specifically NSF and funding that will be available under the federal competitiveness initiative (see April EMC minutes for more details on the latter).

### **Other Discussion Items**

- Kathleen Lally reported that the number of students who attended the special orientation program for Partners students was twice that of last year and additional sessions may be scheduled in the future.
- Older articulations with Ivy Tech and Vincennes should be reviewed to ensure they are still accurate (in case of changes in programs or requirements on either end). A Website is being developed to pull these together and when it is ready, schools will be encouraged to begin such a review which will continued in the future on a regular cycle (review agreements at least every 4-5 years, for example).
- There are discussions underway for a number of new articulations. More details on these and on how the university is responding to the legislative mandate on expanding degree articulations, will be shared in the Fall.

- Ivy Tech is implementing a new computing system that will allow better tracking of students who are referred from IUPUI to Ivy Tech under the Partners' program.
- A follow-up question was raised on the presentation Mike Donahue made at the April meeting on the new Jag Jackets recruiting materials into which school-specific materials could be placed. At least two schools had printed materials recently and were assured that while the goal is to have the content in a common format, absent a formal template, for the time being materials other than the 6" x 10" cards could be inserted.

Troy Brown noted that the template will be available 1 August as part of the revamped campus identity site. In the meantime he encouraged schools to contact him for specifics and noted that Communications and Marketing will pay 75% of the expenses for materials produced utilizing the campus template design. [tdbrown@iupui.edu](mailto:tdbrown@iupui.edu)

### **Upcoming EMC Meetings and Tentative Topics**

- Please add to your calendars

<b>August 25<sup>th</sup></b>	<b>1:00-2:30</b>	<b>BS 3009</b>
<b>September 22<sup>nd</sup></b>	<b>1:00-2:30</b>	<b>BS 3009</b>
<b>October 27<sup>th</sup></b>	<b>1:00-2:30</b>	<b>BS 3009</b>
<b>November 17<sup>th</sup></b>	<b>1:00-2:30</b>	<b>BS 3009</b>
<b>December 15<sup>th</sup></b>	<b>1:00-2:30</b>	<b>BS 3009</b>

# Quality Indicators and Profile of Beginner Applicants and Admitted Students

Fall Semester 6/18/2006

IUPUI (Not Including Columbus)

<b>Beginners</b>	<b>Applicants</b>						<b>Admitted Students</b>				
	<b>2005</b>	<b>% of Total</b>	<b>2006</b>	<b>% of Total</b>	<b>Pct. Chg 2005 to 2006</b>		<b>2005</b>	<b>% of Total</b>	<b>2006</b>	<b>% of Total</b>	<b>Pct. Chg 2005 to 2006</b>
<b>Total</b>	5461	100.0	6083	100.0	11.4		3855	100.0	3994	100.0	3.6
<b>High School Percentile Rank</b>											
<b>Top 10%*</b>	441	9.8	558	11.2	26.5		428	12.8	543	15.4	26.9
<b>Top Third*</b>	1914	42.5	2185	43.7	14.2		1797	53.9	2043	57.8	13.7
<b>Middle Third*</b>	1823	40.5	2018	40.3	10.7		1314	39.4	1282	36.3	-2.4
<b>Bottom Third*</b>	766	17.0	800	16	4.4		221	6.6	207	5.9	-6.3
<b>*Note: Percentage Distribution based on total with rank data on file.</b>											
	<b>2005</b>		<b>2006</b>				<b>2005</b>		<b>2006</b>		
<b>Average HS Percentile Rank</b>	57		58				64		66		
<b>Average SAT</b>	978		978				1003		1004		
<b>Average ACT</b>	20		20				21		21		
<b>Ethnicity</b>	<b>2005</b>	<b>% of Total</b>	<b>2006</b>	<b>% of Total</b>	<b>Pct. Chg 2005 to 2006</b>		<b>2005</b>	<b>% of Total</b>	<b>2006</b>	<b>% of Total</b>	<b>Pct. Chg 2005 to 2006</b>
<b>African American</b>	820	15.0	838	13.8	2.2		448	11.6	385	9.6	-14.1
<b>Asian American</b>	142	2.6	189	3.1	33.1		100	2.6	132	3.3	32.0
<b>Hispanic American</b>	174	3.2	229	3.8	31.6		111	2.9	148	3.7	33.3
<b>Native American</b>	18	0.3	22	0.4	22.2		12	0.2	13	0.2	8.3
<b>Minority Total</b>	1154	21.1	1278	21.0	10.7		671	12.3	678	11.1	1.0
<b>International</b>	164	3.0	289	4.8	76.2		79	1.4	92	1.5	16.5
<b>All Others</b>	4143	75.9	4516	74.2	9.0		3105	56.9	3224	53.0	3.8

Number of International Applicants and Admitted Students  
 Fall Semester 6/18/2006  
 IUPUI (Not Including Columbus)

Undergraduate				2005 - 2006 Comparisons		
Entry Type	2004	2005	2006	Net Diff	Pct Chg	2005 PiC
<b>Beginners</b>						
Applicants	165	164	289	125	76.2%	101.9%
Admits	61	79	92	13	16.5%	89.8%
<b>Transfers</b>						
Applicants	62	82	95	13	15.9%	88.2%
Admits	41	62	51	-11	-17.7%	79.5%

Graduate/Graduate Professional				2005 - 2006 Comparisons		
Entry Type	2004	2005	2006	Net Diff	Pct Chg	2005 PiC
<b>Master's</b>						
Applicants	448	451	530	79	17.5%	90.7%
Admits	188	194	216	22	11.3%	70.0%
<b>Doctorate</b>						
Applicants	110	142	186	44	31%	100.7%
Admits	21	30	25	-5	-16.7%	83.3%
<b>1st Prof.</b>						
Applicants	100	93	82	-11	-11.8%	94.9%
Admits	15	15	12	-3	-20.0%	71.4%

*Note: Graduate and professional applicant data may be incomplete.*

Number of Graduate Applicants and Admitted Students  
 Fall Semester 6/18/2006  
 IUPUI (Not Including Columbus)

Graduate/Graduate Professional				2005 - 2006 Comparisons		
Entry Type	2004	2005	2006	Net Diff	Pct Chg	2005 PiC
<b>Master's</b>						
Applicants	1683	1662	1747	85	5.1%	74.1%
Admits	816	801	894	93	11.6%	52.3%
<b>Doctorate</b>						
Applicants	229	281	342	61	21.7%	95.9%
Admits	63	79	78	-1	-1.3%	73.1%
<b>1st Prof.</b>						
Applicants	2358	2244	2149	-95	-4.2%	83.2%
Admits	692	903	878	-25	-2.8%	92.4%

*Note: Graduate and professional applicant data may be incomplete.*



## Undergraduate Student Headcount for IUPUI Indianapolis

### Point-in-cycle: June 11th

#### **Indicator 1: Projected Headcount at Census based on the Current Point-in-Cycle**

- Undergraduate student enrollments could be down by almost 800 heads if the 2005 registration cycle is predictive of the 2006 cycle.
  - The projected number of degree-seeking undergraduates is of particular concern. Based on point-in-cycle projections, a decrease of 1,264 from fall 2005 to fall 2006 is possible. The decline is projected primarily among freshmen and sophomores. Although this may be a pessimistic projection, the campus was down by 533 freshmen and 332 sophomores last fall (2005 versus 2004).

**Fall Enrollment for June 11th Point-in-Cycle and Census - Undergraduate Students - Indianapolis Only**

	2004	2005	2006	Net Diff. 06 vs 05	2005 PIC	2004 Census	2005 Census	Chg 04 to 05	2006 Projected Census	Projected Chg 05 to 06
Freshmen	2,318	1,594	1,352	-242	33.7%	5,269	4,736	-533	4,012	-724
Sophomores	3,727	3,200	2,848	-352	61.1%	5,566	5,234	-332	4,661	-573
Juniors	2,341	2,287	2,354	67	64.9%	3,391	3,526	135	3,627	101
Seniors	4,121	4,254	4,202	-52	73.0%	5,457	5,824	367	5,756	-68
Total Degree-Seeking	12,507	11,335	10,756	-579	58.7%	19,683	19,320	-363	18,056	-1,264
UG Non-degree	66	205	320	115	23.8%	297	861	564	1,345	484
Total UG	12,573	11,540	11,076	-464	82.5%	19,980	20,181	201	19,401	-780

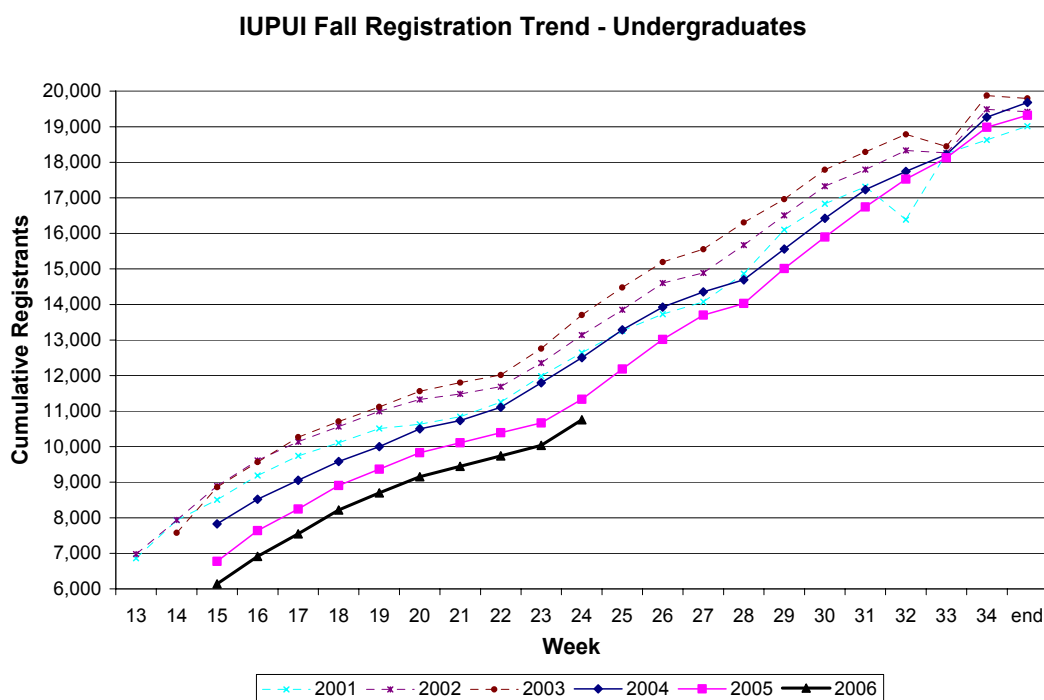
#### **Indicator 2: Trends in the Registration Cycle**

- The loss in fall undergraduate enrollments has dropped considerably in the past 2 weeks, since the end of May.

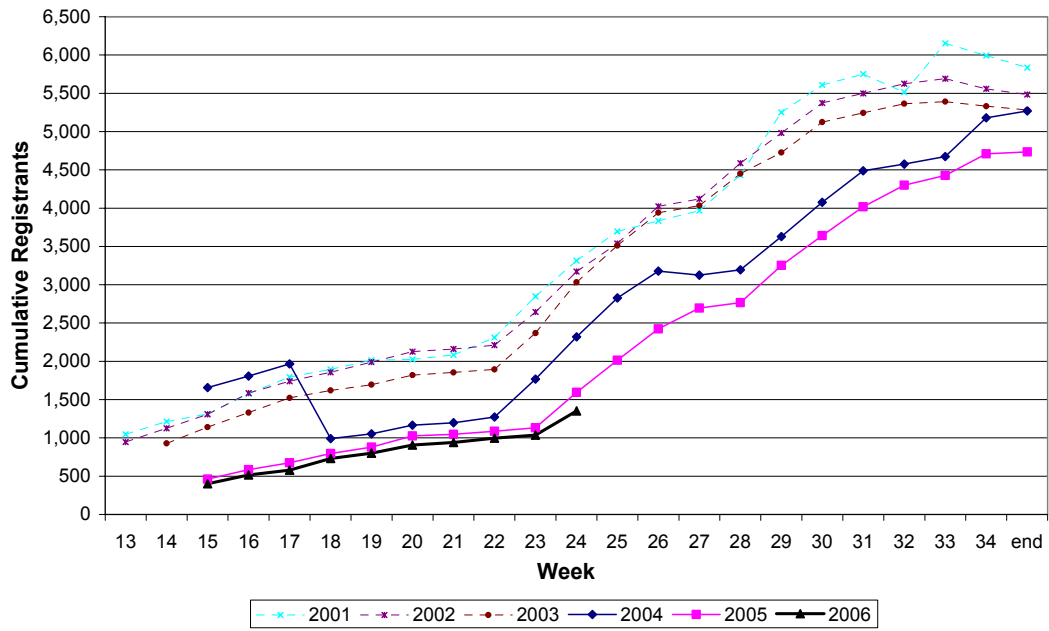
**Net Change in Fall 2006 Headcount from 2005 -  
Undergraduate Enrollments at Indianapolis by Point-in-Cycle  
Date**

	Week	Degree-Seeking	Non-Degree	Total UG
Apr 30	18	-690	80	-610
May 7	19	-667	79	-588
May 14	20	-673	92	-581
May 21	21	-663	96	-567
May 28	22	-651	111	-540
Jun 4	23	-627	117	-510
Jun 11	24	-579	115	-464

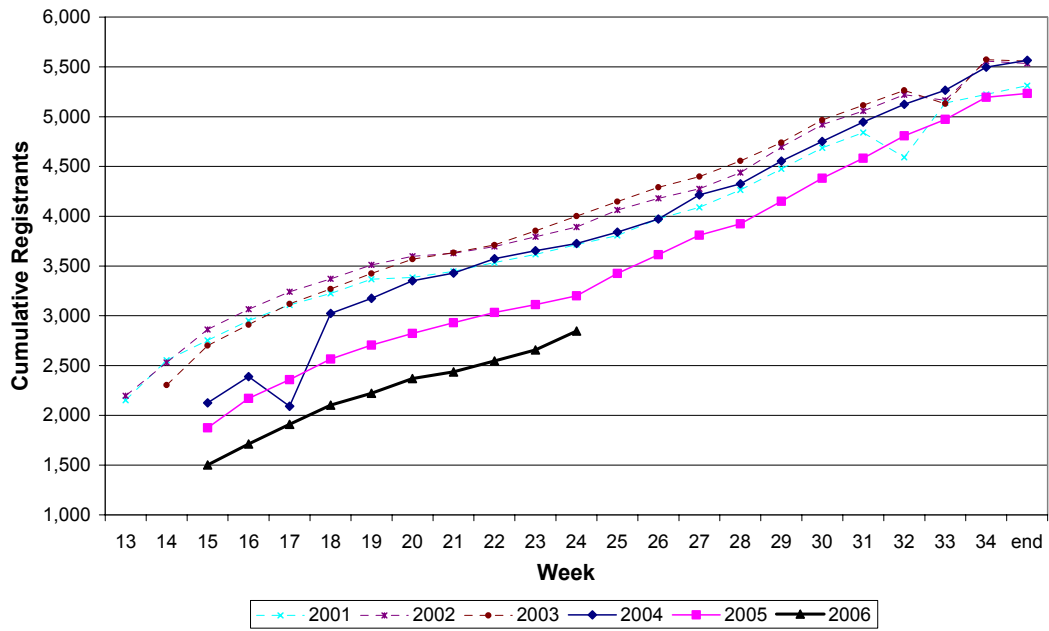
- IUPUI Fall registration trends from 2001 to 2006 were plotted for the different undergraduate class levels by week.
  - Undergraduate enrollments continue to lag for 2006 compared to previous years. However, the gap has narrowed.
  - Of interest is the growing lag seen in 2006 freshman enrollment trend from week 23 onwards.
  - The gap between the 2005 and 2006 sophomore enrollments has narrowed slightly in recent weeks.
  - The 2006 junior enrollment trend continues to proceed well, performing better than its respective 2005 enrollment trend.
  - The 2006 senior enrollment trend is increasing steadily and mirrors that of its respective 2005 enrollment trend.



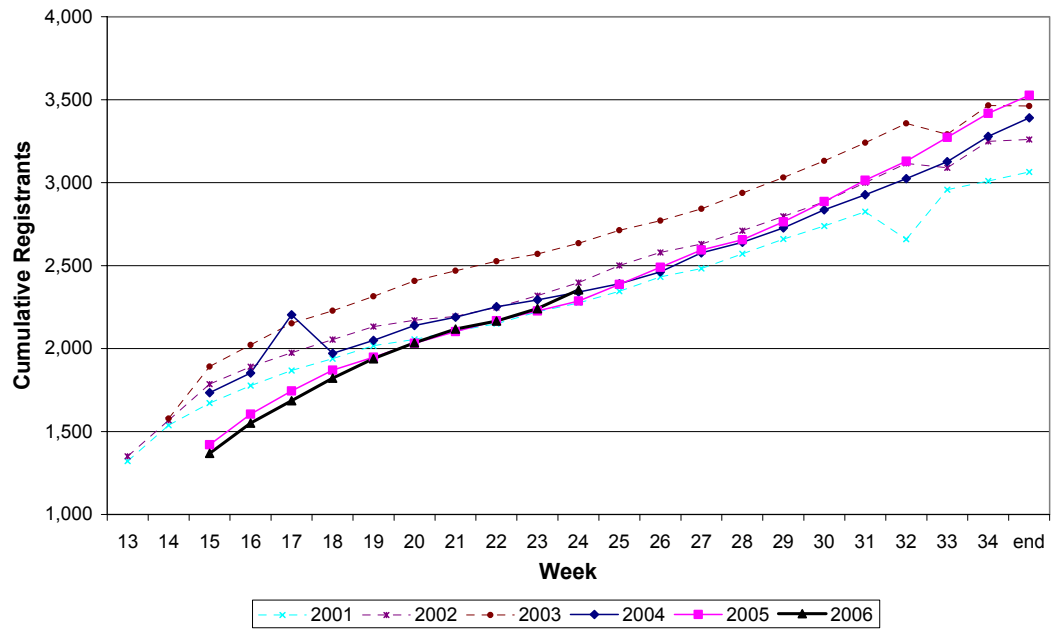
IUPUI Fall Registration Trend - Freshman



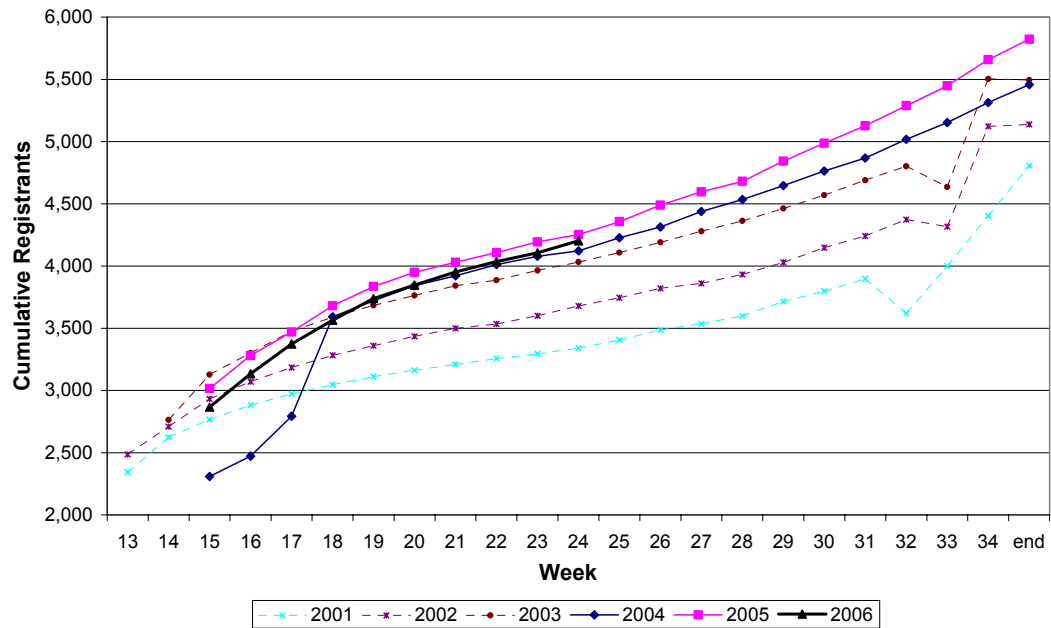
IUPUI Fall Registration Trend - Sophomore



### IUPUI Fall Registration Trend - Junior



### IUPUI Fall Registration Trend - Senior



### **Indicator 3: Fall Enrollment Status of Students Enrolled for the Prior Spring Term**

- A review of the fall registration status of students enrolled last spring indicates some students may be delaying registration again this year.
  - Last year at this point in the registration cycle 52% of the undergraduate students enrolled at IUPUI had registered for the fall term. This year only 49% have registered.
  - The drop in the percentage of spring students registered for fall accounts for a loss of 310 heads at this point in the registration cycle.

#### **Fall Enrollment Status for Undergraduate Students Enrolled at IUPUI during the Preceding Spring Term**

Spring Class	Spring 2005	Enrolled for Fall 05 as of June 11th		Spring 2006	Enrolled for Fall 06 as of June 11th		Expected based on 2005 PIC	Difference in Expected and Actual
	Headcount	n	%	Headcount	n	%		
Freshman	4,042	1,925	48%	3,610	1,688	47%	1,719	-31
Sophomore	5,170	2,816	54%	4,670	2,448	52%	2,544	-96
Junior	3,241	2,065	64%	3,488	2,125	61%	2,222	-97
Senior	5,803	2,726	47%	5,948	2,672	45%	2,794	-122
Non-Degr	261	42	16%	921	184	20%	148	36
Total	18,517	9,574	52%	18,637	9,117	49%	9,427	-310

### **Indicator 4: Undergraduate Admissions Point-in-Cycle**

- The Indianapolis campus is up dramatically in the number of applications from beginners. There is a much smaller increase in admitted beginners at this point compared to last year.
- The number of applications and admits for transfer students is slightly higher than the number last year at this point. Last year at this point only 68% of the transfer applicants had applied.
- Applications and admits for undergraduate non-degree students are up slightly at this point compared to last fall but it's early in the admissions cycle. Last year at this point only 28% of the non-degree applicants had applied.

#### **Undergraduate Applicants - Indianapolis Campus - June 11th Point-in-Cycle**

		Fall 2005	Fall 2006	Net Difference	2005 PIC	2005 Census	2006 Projected Census	Projected Chg 05 to 06
Beginners	Applicants	5439	6026	587	95%	5732	6350	618
	Admits	3779	3911	132	90%	4208	4355	147
Transfers	Applicants	2104	2182	78	68%	3107	3223	116
	Admits	1496	1513	17	59%	2542	2569	27
Non-Degree	Applicants	304	320	16	28%	1075	1131	56
	Admits	266	272	6	26%	1028	1050	22
Total	Applicants	7847	8528	681	79%	9914	10768	854
	Admits	5541	5696	155	71%	7778	8000	222

# FALL Enrollment Update

Fall 2006 - 6/19/2006

## INDIANAPOLIS Enrollment

### Credit Hours Taught

	6/20/2005	6/19/2006	Change	%
School	2005	2006		
BUS	12,776.0	11,727.0	-1,049.0	-8.2%
DENT	709.0	773.0	64.0	9.0%
EDUC	8,540.0	8,801.0	261.0	3.1%
EGTC	14,902.0	13,595.0	-1,307.0	-8.8%
GRAD	111.0	186.0	75.0	67.6%
HERR	6,344.0	6,733.0	389.0	6.1%
INFO	2,660.0	2,496.0	-164.0	-6.2%
JOUR	699.0	725.0	26.0	3.7%
LAW	8,323.0	8,632.0	309.0	3.7%
LIBA	39,078.0	37,160.0	-1,918.0	-4.9%
LSTU	268.0	269.0	1.0	0.4%
MED	2,578.0	2,633.0	55.0	2.1%
MUS	1,888.0	1,779.0	-109.0	-5.8%
NURS	9,770.0	10,169.0	399.0	4.1%
PED	8,212.0	8,001.0	-211.0	-2.6%
SCI	35,957.0	34,286.0	-1,671.0	-4.6%
SCS	135.0	180.0	45.0	33.3%
SHRS	1,577.0	1,770.0	193.0	12.2%
SLIS	1,173.5	1,272.0	98.5	8.4%
SPEA	5,292.0	5,443.0	151.0	2.9%
SWK	5,171.0	5,480.5	309.5	6.0%
SWT	21.0	0.0	-21.0	100.0%
UCOL	895.0	648.0	-247.0	-27.6%
<b>TOTAL</b>	<b>167,079.5</b>	<b>162,758.5</b>	<b>-4,321.0</b>	<b>-2.59%</b>

### Headcount by Student School

	6/20/2005	6/19/2006	Change	%
School	2005	2006		
BUS	941	813	-128	-13.6%
DENT	74	66	-8	-10.8%
EDUC	1,209	1,143	-66	-5.5%
EGTC	1,511	1,420	-91	-6.0%
GCND	187	148	-39	-20.9%
GRAD	190	290	100	52.6%
HERR	613	631	18	2.9%
INFO	379	352	-27	-7.1%
JOUR	66	61	-5	-7.6%
LAW	634	669	35	5.5%
LIBA	1,035	1,013	-22	-2.1%
LSTU	10	15	5	50.0%
MED	130	160	30	23.1%
MUS	13	11	-2	-15.4%
NURS	1,142	1,127	-15	-1.3%
PED	548	603	55	10.0%
SCI	1,132	1,165	33	2.9%
SCS	693	587	-106	-15.3%
SHRS	132	147	15	11.4%
SLIS	198	210	12	6.1%
SPEA	581	590	9	1.5%
SWK	423	493	70	16.5%
UCOL	3,649	3,242	-407	-11.2%
<b>IN</b>	<b>15,490</b>	<b>14,956</b>	<b>-534</b>	<b>-3.45%</b>
Unduplicated	15,472	14,934	-538	-3.48%

## IUPUC Enrollment

<b>TOTAL</b>	<b>8,711.0</b>	<b>9,745.0</b>	<b>1,034.0</b>	<b>11.9%</b>	<b>CO</b>	<b>787</b>	<b>866</b>	<b>79</b>	<b>10.0%</b>
--------------	----------------	----------------	----------------	--------------	-----------	------------	------------	-----------	--------------

<b>Grand Total</b>	<b>175,790.5</b>	<b>172,503.5</b>	<b>-3,287.0</b>	<b>-1.87%</b>
--------------------	------------------	------------------	-----------------	---------------

<b>16,277</b>	<b>15,822</b>	<b>-455</b>	<b>-2.80%</b>
---------------	---------------	-------------	---------------

Office of the Registrar  
6/19/2006