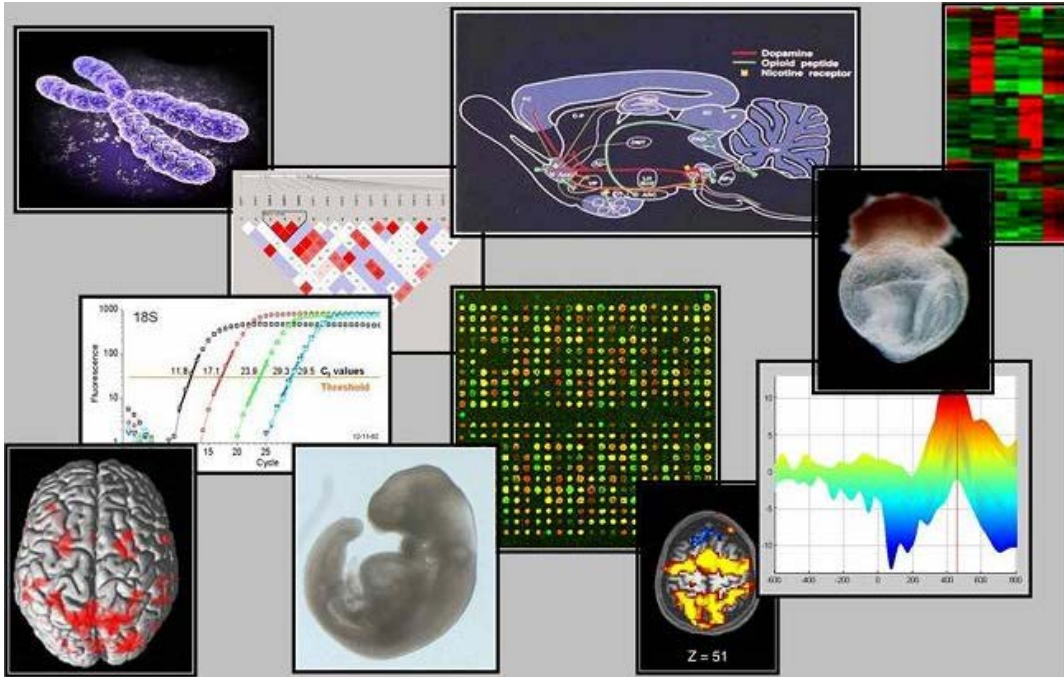


# INDIANA ALCOHOL RESEARCH CENTER

Welcome to the Indiana Alcohol Research Center



The Indiana Alcohol Research Center (IARC) is a Specialized Research Center which focuses on the elucidation of the biomedical and psychosocial factors that contribute to alcohol abuse and alcoholism. The Center was established in 1987 by a grant from the National Institute on Alcohol Abuse and Alcoholism (NIAAA) of the National Institutes of Health. The NIAAA is the major federal agency supporting research into the etiology, pathogenesis, treatment and prevention of alcoholism.

The Indiana ARC has enjoyed 20 years of continuous funding from the NIAAA which has resulted in the establishment of a collaborative and multi-disciplinary group of scientists who come from many different scientific disciplines including the departments of [Medicine](#), [Psychiatry](#), Psychology ([Purdue](#) and [Indiana University](#)), [Biochemistry and Molecular Biology](#), [Medical and Molecular Genetics](#), [Cellular and Integrative Physiology](#), [Pharmacology and Toxicology](#), [Anatomy and Cell Biology](#), [Ophthalmology](#), [Neurology](#), and [Radiology](#).

Researchers in the ARC are studying the biological and molecular basis for differences in the way people drink, and the consequences of heavy drinking. The Center collaborates with researchers across the globe. We have been particularly active in providing selectively bred lines of [rats and mice](#) which differ in alcohol preference, in assisting investigators with [genotype-phenotype](#) correlations, and in the use of [controlled intravenous administration of alcohol](#) to maintain blood alcohol concentrations within prescribed levels. We are an exceptional venue for alcoholism research with a [training grant](#) and numerous investigators with [externally funded alcohol research programs](#), in addition to their participation in the IARC. The Center is also highly involved in educating Indiana policy makers regarding the science basis for diagnosis and treatment of alcoholism and other substance abuses.

