

990-PF

Return of Private Foundation Exempt from Income Tax

1980

Form
Department of the Treasury
Internal Revenue Service

Under Section 501(c)(3) of the Internal Revenue Code

For the calendar year 1980, or tax year beginning

1980 and ending

19

Please type,
print, or
attach label.
See Specific
Instructions

Name of organization

YJ 36-6125258 990PF

12 4 04 03

Employer identification number

36 6125258

Addr

KROC FOUNDATION

% G A HOFFMAN

4425 CASS ST STE A

SAN DIEGO

CA

92109

City

8939 Villa La Jolla Drive Suite 203

La Jolla CA 92037

If the foundation is in a 60-
month termination under sec-
tion 507(b)(1)(B) check here ☐

Fair market value of assets at end of
year

49379489

If address changed, check here ☒Foreign organizations, check here ☐The books are in care of ☒ Foss Hickman Giral & Massingale Accountants Inc.Located at ☒ 600 D St #1200 San Diego CA 92101 Telephone no. ☒ 714 231-0331

If exemption application is pend-
ing, check here ☐

Part I Analysis of Revenue and Expenses (See instructions for Part I)

	(A) Revenue and expenses per books	(B) Computation of net investment income	(C) Computation of adjusted net income	(D) Disbursements for exempt purpose
1 Gross contributions, gifts, grants, etc. (see instructions) ^{SCN 2}	50000			
2 Contributions from split-interest trusts (see instructions)				
3 Gross dues and assessments				
4 Interest	361000	361000	361000	
5 Dividends	1016411	1016411	1016411	
6 Gross rents and royalties				
7 Net gain or (loss) from sale of assets not on line 11	<974825>			
8 Capital gain net income (see instructions)		12900175		
9 Net short-term capital gain (see instructions)				
10 Income modifications (see instructions)				
11 Gross profit from any business activities: (Gross receipts \triangleright \$ minus cost of sales \triangleright \$)				
12 Other income (attach schedule)	219909	234677	234677	
13 Total—add lines 1 through 12	742495	1451263	1412089	
14 Compensation of officers, etc. (see instructions)	62000	12400	12400	49600
15 Other salaries and wages	244093	48817	48817	195266
16 (a) Pension plan contributions (enter number of plans \triangleright)				
(b) Other employee benefits				
17 Investment, legal, and other professional services	10807	2161	2161	8646
18 Interest	55578	41684	41684	13894
19 Taxes (see instructions) ^{SCN 2}	304213	2510	2510	301703
20 Depreciation, amortization, and depletion (see instructions) ^{SCN 30}	9054	-	9052	
21 Rent				
22 Other expenses (attach schedule) ^{SCN 4}	1562976	10012	10012	1552964
23 Contributions, gifts, grants (see instructions) ^{SCN 1}	4787086			4787086
24 Total—add lines 14 through 23	7035793	117384	126636	6909159
25 (a) Excess of revenue over expenses: Line 13 minus line 24	<6613200>	14894699		
(b) Net investment income (if negative enter -0-)			1485452	
(c) Adjusted net income (see instructions) (if negative enter -0-)				

Part II Excise Tax On Investment Income

1 Domestic organizations enter 2% of line 25(b). Foreign organizations enter 4% of line 25(b)	217894
2 Credits: (a) Foreign organizations—tax withheld at source	
(b) Tax paid with application for extension of time to file (Form 2758)	
3 Tax due—line 1 minus line 2. Pay in full with return. Make check or money order payable to Internal Revenue Service (write employer identification number on check or money order)	217894
4 Overpayment—line 2 minus line 1	
Foreign organization—Enter book value \triangleright \$ and fair market value \triangleright \$ of investment assets held in U.S.	

Under penalties of perjury, I declare that I have examined this return, including accompanying schedules and statements, and to the best of my knowledge and belief it is true, correct, and complete. Declaration of preparer (other than taxpayer) is based on all information of which the preparer has any knowledge.

Signature of officer or trustee

Date

Preparer's signature

Foss Hickman Giral & Massingale Accountants Inc.

1200 600 D St #1200 San Diego CA 92101

Preparer's address (or employer's name and address) 95 262224

Sign Here

Title

052181750
 FILMED

Balance Sheets		Beginning of tax year		End of tax year	
		(A) Amount	(B) Total	(C) Amount	(D) Total
Assets					
1 Cash:					
(a) Savings and interest-bearing accounts		67,142		12,100	
(b) Other		276,71	96,813	36,929	109,029
2 Accounts receivable net					
3 Notes receivable net (attach schedule)					
4 Inventories					
5 Government obligations:					
(a) U.S. and instrumentalities	Sch 3			172,308	
(b) State, subdivisions of States	Sch 3				172,308
6 Investments in corporate bonds, etc. (attach schedule)	Sch 3				352,125
7 Investments in corporate stocks (attach schedule)	Sch 3		50,774.97		37,869.70
8 Mortgage loans (number of loans ▶)					
9 Other investments (attach schedule)	Sch 3		196,619.5		30,772.67
10 Depreciable (depletable) assets (attach schedule):					
(a) Held for investment purposes					
(b) Minus accumulated depreciation					
(c) Held for charitable purposes	Sch 50	86,795		117,71	
(d) Minus accumulated depreciation		36,320	50,475	45,372	43,426
11 Land:					
(a) Held for investment purposes					
(b) Held for charitable purposes					
12 Other assets (attach schedule)	Sch 3		15,358		14,065
13 Total assets			524,452.88		463,647.20
Liabilities					
14 Accounts payable			26,384		59,734
15 Contributions, gifts, grants, payable					
16 Mortgages and notes payable (attach schedule)					
17 Other liabilities (attach schedule)	Sch 3		109,826		29,028
18 Total liabilities			136,210		89,014
Net Worth (Fund Balances)					
19 Principal fund ▶			706,935.9		696,945.34
20 Income fund ▶					
			<183,083.1>		<236,788.6>
21 Total net worth (fund balances)			523,902.8		460,157.21
22 Total liabilities and net worth (line 18 plus line 21)			524,452.88		463,647.20

Analysis of Changes in Net Worth

1 Total net worth at beginning of year—Part III, Column B, line 21	523,902.8
2 Enter amount from Part I, line 25(a)	<629,330.0>
3 Other increases not included in line 2 (itemize) ▶	
4 Total of lines 1, 2, and 3	460,157.21
5 Decreases not included in line 2 (itemize) ▶	
6 Total net worth at end of year (line 4 minus line 5)—Part III, Column D, line 21	460,157.21

Statements Regarding Activities

File Form 4720 if you answer "No" to question 10(b), 11(b), or 14(b); or if you answer "Yes," to question 10(c), 12(b), 13(a), or 13(b).

- 1 (a) During the tax year, did you attempt to influence any national, State, or local legislation?
(b) During the year did you participate or intervene in any political campaign?
(c) Did you spend more than \$100 during the year (either directly or indirectly) for political purposes (see instructions for definition)?
If you answered "Yes" to 1(a), (b), or (c), attach a detailed description of the activities and copies of any materials published or distributed by the organization in connection with the activities.
(d) Did you file Form 1120-POL?
2 Have you engaged in any activities which have not previously been reported to the Internal Revenue Service?
If "Yes," attach a detailed description of the activities.
3 Have you made any changes, not previously reported to the IRS, in your governing instrument, articles of incorporation, or bylaws, or other similar instruments?
If "Yes," attach a conformed copy of the changes.
4 (a) Did you have unrelated business gross income of \$1,000 or more during the year?
(b) If "Yes," have you filed a tax return on Form 990-T for this year?
5 Was there a liquidation, termination, dissolution, or substantial contraction during the year?
If "Yes," attach a schedule for each asset disposed of showing: the type of asset, the date of disposition, its cost or other basis, its fair market value on date of disposition, and the name and address of each recipient to whom assets were distributed.
6 (a) Did you have at least \$5,000 in assets at any time during the year?
(b) If "Yes," did you file the annual report required by section 6056 (see Form 990-AR for instructions)?
7 Are the requirements of section 508(e) (relating to governing instruments) satisfied? (See instructions)
If "Yes," are the requirements satisfied by:
(a) Language in the governing instrument (original or as amended), or
(b) Enactment of State legislation that effectively amends the governing instrument with no mandatory directions in the governing instrument that conflict with the State law?
8 (a) Enter States to which the foundation reports or with which it is registered (see instructions) ▶
CALIFORNIA AND ILLINOIS
(b) If you answered 6(a) "Yes," have you furnished a copy of Form 990-AR (or equivalent report) to the Attorney General (or his/her designate) of each State as required by General Instruction K.1?
If "No," attach explanation.
9 Are you claiming status as an operating foundation within the meaning of sections 4942(j)(3) or 4942(j)(6) for calendar year 1980 or fiscal year beginning in 1980 (see instructions for Part XII)?
If "Yes," complete Part XII.
10 Self-dealing (section 4941):
(a) During the year did you (either directly or indirectly):
(1) Engage in the sale or exchange or leasing of property with a disqualified person?
(2) Borrow money from, lend money to, or otherwise extend credit to (or accept it from) a disqualified person?
(3) Furnish goods, services, or facilities to (or accept them from) a disqualified person?
(4) Pay compensation to or pay or reimburse the expenses of a disqualified person?
(5) Transfer any of your income or assets to a disqualified person (or make any of either available for the benefit or use of a disqualified person)?
(6) Agree to pay money or property to a government official? (Exception: check "No" if you agreed to make a grant to or to employ the official for a period after he or she terminates government service if he or she is terminating within 90 days.)
(b) If you answered "Yes" to any of the questions 10(a)(1) through (6), were the acts you engaged in excepted acts as described in the instructions for this line?
(c) Did you engage in a prior year in any of the acts described in 10(a), other than excepted acts, that were acts of self-dealing that were not corrected by the first day of your tax year beginning in 1980?
11 Taxes on failure to distribute income (section 4942) (does not apply for years you were an operating foundation as defined in section 4942(j)(3) or 4942(j)(6)):
(a) Did you at the end of tax year 1980 have any undistributed income (lines 6(b) and (c), Part XI) for tax year(s) beginning before 1980?
If "Yes," list the years ▶
(b) If "Yes," to (a) above, are you applying the provisions of section 4942(a)(2) (relating to incorrect valuation of assets) to the undistributed income for ALL such years?
(c) If the provisions of section 4942(a)(2) are being applied to ANY of the years listed in (a) above, list the years here and see the instructions ▶
12 Taxes on excess business holdings (section 4943):
(a) Did you hold more than 2% direct or indirect interest in any business enterprise at any time during the year?
(b) If "Yes," did you have excess business holdings in 1980 as a result of any purchase by you or disqualified persons after May 26, 1969; after the lapse of the 5-year period to dispose of holdings acquired by gift or bequest; or after the lapse of the 10-year first phase holding period?
Note: You may use Schedule C, Form 4720 to determine if you had excess business holdings in 1980.

Minimum Investment Return for 1980
(Operating Foundations—See instructions)

1 Fair market value of assets not used (or held for use) directly in carrying out exempt purposes:	
(a) Average monthly fair market value of securities	47,513,933
(b) Average of monthly cash balances	32,399.0
(c) Fair market value of all other assets (see instructions)	57,490
(d) Total (add lines (a), (b), and (c))	47,895,403
2 Acquisition indebtedness applicable to line 1 assets	
3 Line 1(d) minus line 2	47,895,403
4 Cash deemed held for charitable activities—enter 1½% of line 3 (for greater amount, see instructions)	718,431
5 Line 3 minus line 4	47,176,972
6 Enter 5% of line 5	2,358,849

Computation of Distributable Amount for 1980
(See instructions—not applicable to operating foundations)

1 Adjusted net income from Part I, line 25(c)		1,475,752
2 Minimum investment return from Part VIII, line 6		2,358,849
3 Enter the larger of line 1 or line 2		2,358,849
4 Total of:		
(a) Tax on investment income for 1980 from Part II, line 1	2,878,94	
(b) Income tax on unrelated business income for 1980 (Form 990-T)	-	2,878,94
5 Distributable amount (line 3 minus line 4)		207,0955
6 Adjustments to distributable amount (see instructions)		
7 Distributable amount as adjusted (line 5 plus or minus line 6)—also enter in Part XI, line 1		207,0955

Qualifying Distributions in 1980
(See instructions)

1 Amounts paid (including administrative expenses) to accomplish charitable purposes:	
(a) Expenses, contributions, gifts, etc.—total from Part I, column (D), line 24	69,9159
(b) Program-related investments (see instructions)	
2 Amounts paid to acquire assets used (or held for use) directly in carrying out charitable, etc., purposes	
3 Amounts set aside for specific projects which are for charitable purposes	
4 Total qualifying distributions made in 1980 (add lines 1, 2, and 3)—also enter in Part XI, line 4	69,9159

Private Operating Foundations
(See instructions and Part V, Question 9) *N/A*

- 1 (a) If the foundation has received a ruling or determination letter that it is an operating foundation, and the ruling is effective for 1980, enter the date of the ruling ▶
(b) Check box to indicate whether you are an operating foundation described in section ☐ 4942(j)(3) or ☐ 4942(j)(6) (see instructions).

	Prior Three Years				
	Tax year (a) 1980	(b) 1979	(c) 1978	(d) 1977	(e) Total
2 (a) Adjusted net income (from Part I, line 25(c) for 1980. Enter corresponding amount for prior years)					
(b) 85% of line (a)					
(c) Qualifying distributions from Part X, line 4 for 1980 (enter corresponding amount for prior years)					
(d) Amounts included in (c) not used directly for active conduct of exempt activities					
(e) Qualifying distributions made directly for active conduct of exempt purposes (line (c) minus line (d))					
3 Complete the alternative test in (a), (b), or (c) on which the organization relies:					
(a) "Assets" alternative test—enter:					
(1) Value of all assets					
(2) Value of assets qualifying under section 4942(j)(3)(B)(i)					
(b) "Endowment" alternative test—Enter 2/3 of minimum investment return shown in Part VIII, line 6 for 1980 (enter 2/3 of comparable amount for prior years)					
(c) "Support" alternative test—enter:					
(1) Total support other than gross investment income (interest, dividends, rents, payments on securities loans (section 512(a)(5)), or royalties)					
(2) Support from general public and 5 or more exempt organizations as provided in section 4942(j)(3)(B)(iii)					
(3) Largest amount of support from an exempt organization (see instructions)					
(4) Gross investment income					

SCHEDULE OF CONTRIBUTIONS,
GIFTS, GRANTS

THE KROC FOUNDATION

36-6125258

Schedule 1 - 12/31/80

<u>Principal Investigator and Institution</u>	<u>Title of Project</u>	<u>Amount</u>
Donald M. Marcus, M.D. Albert Einstein College of Medicine Bronx, NY	Glycosphingolipid antigens of human lymphocyte subpopulations	\$ 19,746
Kevin J. Lafferty, Ph.D. The Australian National University Australia	Human islet transplantation	16,686
Helen V. Bashir, MB, BS, FRCPA John P. Edmonds, MB, BS, FRACP Andrew F. Geczy, Ph.D., D.Sc. Australian Red Cross Society Australia	Role of environmental agents in the pathogenesis of the seronegative arthropathies: a biochemical study	16,500
Lawrence Chan, M.D. Baylor College of Medicine Houston, TX	Biochemical studies on somatostatin biosynthesis	32,105
Donald M. Marcus, M.D. Baylor College of Medicine Houston, TX	Glycosphingolipid antigens of human lymphocyte subpopulations	23,464
W. Page Faulk, M.D. Blond McIndoe Centre for Transplantation Biology England	Immunological studies of diabetic placenta	27,175
John I. Loewenstein, M.D. Boston University Medical Center Boston, MA	Ocular blood flow in diabetes mellitus	7,065
Neil B. Ruderman, M.D., Ph.D. Boston University School of Medicine (University Hospital) Boston, MA	Polyamine metabolism in diabetes	31,775
Michael P. Czech, M.D. Brown University Providence, RI	Chemistry of the insulin receptor	38,836
Jeremy P. Brockes, Ph.D. California Institute of Technology Pasadena, CA	A pituitary growth factor for cultured rat Schwann cells	39,770

Schedule of Contributions, Gifts, Grants

Schedule 1 - 12/31/80

Kroc Foundation

36-6125258

<u>Principal Investigator and Institution</u>	<u>Title of Project</u>	<u>Amount</u>
Alan G. Goodridge, Ph.D. Case Western Reserve University Cleveland, OH	Hormone action in mutant hepatocytes	\$ 22,601
Richard W. Hanson, Ph.D. Case Western Reserve University Cleveland, OH	Role of insulin in the regulation of enzyme synthesis	19,490
Irving Kushner, M.D. Case Western Reserve University Cleveland, OH	Regulation of biosynthesis of murine amyloid-associated proteins	6,462
Charles J. Malemud, Ph.D. Roland W. Moskowitz, M.D. Victor M. Goldberg, M.D. Case Western Reserve University Cleveland, OH	Studies of human cartilage growth and metabolism in aging and osteoarthritis	16,566
Harvey C. Gonick, M.D. Cedars-Sinai Medical Center Los Angeles, CA	Role of chromium deficiency as a cause of diabetes	39,400
James R. Klinenberg, M.D. Cedars-Sinai Medical Center Los Angeles, CA	A double blind controlled study of therapeutic lymphoplasmapheresis in rheumatoid arthritis	14,774
John J. Miller, III, M.D., Ph.D. Children's Hospital at Stanford Palo Alto, CA	Role of antigen-antibody complexes in juvenile rheumatoid arthritis	27,617
Howard L. Weiner, M.D. Children's Hospital Medical Center Boston, MA	Natural killer cell activity in patients with multiple sclerosis and the relationship between human natural killer cells and measles virus	17,738
Jack R. Battisto, Ph.D. Cleveland Clinic Foundation Cleveland, OH	Studies on the altered IgG human rheumatoid arthritis and development of a mouse model for adjuvant arthritis	36,960
Randall S. Krakauer, M.D. Cleveland Clinic Foundation Cleveland, OH	Investigation in suppressor cells and adaptive immunotherapy in autoimmunity	32,721
Peter C. Dowling, M.D. Stuart Cook, M.D. College of Medicine and Dentistry of New Jersey Newark, NJ	Lyme agent associated joint and nervous system disease on Cuttyhunk Island	11,000

<u>Principal Investigator and Institution</u>	<u>Title of Project</u>	<u>Amount</u>
John W. Prineas, M.D. College of Medicine and Dentistry of New Jersey Newark, NJ	Characterization of virus-like particles and demyelination in acute lesion in multiple sclerosis	\$ -0-
William V. Lumb, D.V.M., Ph.D. Colorado State University Fort Collins, CO	Kinetic analysis of cholesterol and bile acid metabolism after portacaval shunt in Yucatan swine	11,000
Eugene L. Pautler, Ph.D. Colorado State University Fort Collins, CO	Transport of glucose and amino acids across the blood-retinal barrier in streptozotocin-induced diabetic rats	7,986
Eugene L. Pautler, Ph.D. Colorado State University Fort Collins, CO	Glucose and amino acid transport in ocular tissues of dystrophic and diabetic rats	-0-
Robert W. Phillips, D.V.M., Ph.D. Colorado State University Fort Collins, CO	Yucatan miniature swine as a model for diabetes mellitus	100,148
Isidore Edelman, M.D. Columbia University College of Physicians and Surgeons New York, NY	Use of glucocorticoid analogs to characterize glucocorticoid receptors	34,090
Max J. Appel, D.V.M., Ph.D. James A. Baker Institute for Animal Health New York State College of Veterinary Medicine Cornell University Ithaca, NY	Canine viruses and multiple sclerosis	9,804
George Lust, Ph.D. James A. Baker Institute for Animal Health New York State College of Veterinary Medicine Cornell University Ithaca, NY	Canine hip dysplasia: a model for study of early events in osteoarthritis	39,617
Dolph O. Adams, M.D., Ph.D. Duke University Medical Center Durham, NC	Cytolytic proteases from mononuclear phagocytes in rheumatoid arthritis: effects on connective tissue cells and their regulation	12,530
Sergio L. Abreu, Ph.D. Fordham University Bronx, NY	Effects of interferon on experimental allergic encephalomyelitis and adjuvant arthritis	7,953

<u>Principal Investigator and Institution</u>	<u>Title of Project</u>	<u>Amount</u>
G. D. Aurbach, M.D. Edward M. Brown, M.D. Foundation for Advanced Education in the Sciences Bethesda, MD	Electrical potential of parathyroid cells in response to secretagogues and extracellular calcium	\$ 3,256
Samuel W. Cushman, Ph.D. Foundation for Advanced Education in the Sciences Bethesda, MD	Mechanism of insulin's stimulatory action on glucose transport in the isolated adipose cell	7,980
Monique E. Dubois-Daloz, M.D. Foundation for Advanced Education in the Sciences Bethesda, MD	Culturing of large quantities of rat Schwann cells and study of their ability to myelinate or remyelinate axons in the central and peripheral nervous system	13,005
C. Ronald Kahn, M.D. Foundation for Advanced Education in the Sciences Bethesda, MD	Study of the metabolism, biochemical and structural characteristics of the insulin receptor in 3T3-L1 fatty fibroblasts	15,200
Loretta Leive, Ph.D. Foundation for Advanced Education in the Sciences Bethesda, MD	Phagocytosis of bacteria by macrophages: role of the polysaccharide of lipopoly- saccharide in interacting with macrophages and complement	5,000
Harvey B. Pollard, M.D., Ph.D. Foundation for Advanced Education in the Sciences Bethesda, MD	Molecular basis of insulin secretion from pancreatic islet B cells	7,500
Matthew M. Rechler, M.D. Foundation for Advanced Education in the Sciences Bethesda, MD	Structure and biosynthesis of an insulin- like growth factor: multiplication stimulating activity	27,457
Harry Keen, M.D., F.R.C.P. Guy's Hospital Medical School England	Metabolic normalization and microvascular disease	23,789
George A. Bray, M.D. Los Angeles County Harbor- UCLA Medical Center Torrance, CA	Hypothalamic peptides in diabetes and obesity	22,212
David W. Hollister, M.D. Los Angeles County Harbor- UCLA Medical Center Torrance, CA	The collagens of normal and osteoarthritic cartilage	42,141

<u>Principal Investigator and Institution</u>	<u>Title of Project</u>	<u>Amount</u>
David L. Rimon, M.D., Ph.D. Los Angeles County Harbor- UCLA Medical Center Torrance, CA	The genetic heterogeneity of insulin dependent diabetes mellitus	\$ 39,641
Alfred L. Goldberg, M.D. Harvard Medical School Boston, MA	The rapid degradation of insulin and other hormones in bacterial cells	18,448
John W. Angers, M.D. Human Immunology Foundation New York, NY	A diagnostic test for MS	-0-
Alvin H. Sacks, Ph.D. Institute for Medical Research San Jose, CA	Studies of the vascular problems related to diabetes	20,574
Linda C. Cork, D.V.M., Ph.D. Johns Hopkins Hospital Baltimore, MD	Infectious leukoencephalomyelitis of goats, an animal model of demyelinating disease	39,741
Richard T. Johnson, M.D. Johns Hopkins University Baltimore, MD	The pathogenesis of measles encephalitis in Lima, Peru	9,148
M. Daniel Lane, Ph.D. Johns Hopkins University Baltimore, MD	Regulation of the synthesis, processing and turnover of the insulin receptor in the liver cell	16,300
Shirley E. Poduslo, Ph.D. Johns Hopkins Hospital Baltimore, MD	Oligodendroglia: a study of its surface components	31,645
William L. Chick, M.D. Joslin Diabetes Foundation Boston, MA	Studies of pancreatic beta cells in the pathogenesis and treatment of diabetes	49,940
Robert A. Greenwald, M.D. Long Island Jewish-Hillside Medical Center New Hyde Park, NY	Effects of superoxide radical on connective tissues	28,017
Ralph A. Meyer, Jr., Ph.D. Marquette University Milwaukee, WI	X-linked hypophosphatemia (vitamin D-resistant rickets): a mouse model	36,599
Robert B. Colvin, M.D. Massachusetts General Hospital Boston, MA	Suppression of experimental allergic encephalomyelitis by anti-idiotypes	8,247

<u>Principal Investigator and Institution</u>	<u>Title of Project</u>	<u>Amount</u>
Henry J. Mankin, M.D. Massachusetts General Hospital Boston, MA	Demonstration of normal and osteo- arthritic chondrocyte heterogeneity using flow-through cytophotometry	\$ 8,191
Richard J. Wurtman, M.D. Massachusetts Institute of Technology Cambridge, MA	Effects of experimental diabetes on transport of hexoses and other substrates across the blood-brain barrier	22,517
John E. Gerich, M.D. Mayo Clinic and Mayo Medical School Rochester, MN	Control of somatostatin secretion in vitro	23,120
Vanda A. Lennon, M.D., Ph.D. Mayo Clinic and Mayo Medical School Rochester, MN	An immunologic approach to brain differentiation and myelinogenesis	47,455
F. John Service, M.D. Mayo Clinic and Mayo Medical School Rochester, MN	Metabolic normalization and microvascular disease	23,213
Thomas A. Huff, M.D. Medical College of Georgia Augusta, GA	The relation of non-enzymatic glycosylation of lens crystallin to cataract formation in diabetes	13,222
Gordon C. Weir, M.D. Medical College of Virginia Richmond, VA	Separation of cell types of the islets of Langerhans	13,808
Richard L. Drake, Ph.D. Medical College of Wisconsin Milwaukee, WI	Insulin's effect on changing levels of pyruvate kinase mRNA	11,000
Daniel J. McCarty, M.D. Medical College of Wisconsin Milwaukee, WI	Turnover of calcium pyrophosphate dihydrate crystal in vivo	25,250
William L. Duax, Ph.D. Medical Foundation of Buffalo Buffalo, NY	Molecular structure and biological activity of insulin I	26,400
Christian Schwabe, Ph.D. Medical University of South Carolina Charleston, SC	A novel osteoarthritis model	17,341
Gabriel Virella, M.D., Ph.D. Medical University of South Carolina Charleston, SC	Detection, isolation and characterization of circulating immune complexes in diabetic patients	31,720

<u>Principal Investigator and Institution</u>	<u>Title of Project</u>	<u>Amount</u>
David Hamerman, M.D. Montefiore Hospital and Medical Center Bronx, NY	A possible viral agent in rheumatoid arthritis: effects on glycosaminoglycan synthesis by synovial cells	\$ 11,000
Eugene W. Straus, M.D. Montefiore Hospital and Medical Center Bronx, NY	Studies of the content and kinetics of CCK converting enzymes in obese rodent brains	14,438
Edward C. Franklin, M.D. New York University Medical Center New York, NY	Possible mechanisms for disordered immune regulation in rheumatoid arthritis and related diseases	16,140
Ira M. Goldstein, M.D. New York University Medical Center New York, NY	Oxygen-derived free radicals and inflam- mation	24,750
Mauro C. Dal Canto, M.D. Northwestern University Chicago, IL	Primary demyelination produced by ts mutants of viruses: morphologic, immunohistochemical, immunological and virological studies	35,607
Norbert Freinkel, M.D. Northwestern University Chicago, IL	Effects of pregnancy on intermediary metabolism and diabetes	-0-
Howard L. Lipton, M.D. Northwestern University Chicago, IL	Chronic central nervous system infections in mice produced by human enteroviruses	33,984
Steven G. Krakowka, D.V.M., Ph.D. Ohio State University Columbus, OH	Canine distemper virus and multiple sclerosis	31,658
Jerry R. Mendell, M.D. Ohio State University Columbus, OH	Ultrastructural immunocytochemical localization of the P2 protein in peripheral nervous system	17,739
Charles F. Howard, Ph.D. Oregon Regional Primate Research Center Beaverton, OR	Diabetes in nonhuman primates	14,288
Richard L. Stevens, Ph.D. Robert B. Brigham Hospital Boston, MA	Somatomedin and insulin control of proteoglycan biosynthesis in the human chondrocyte	5,500

Schedule of Contributions, Gifts, Grants
Schedule I - 12/31/80

Kroc Foundation
36-6125258

<u>Principal Investigator and Institution</u>	<u>Title of Project</u>	<u>Amount</u>
Darrell Doyle, Ph.D. Roswell Park Memorial Institute Buffalo, NY	Transfer of the plasma membrane receptor for insulin from hepatocytes to cells not responsive to insulin	\$ 7,325
Eva M. Kohner, M.D., F.R.C.P. Royal Postgraduate Medical School England	Metabolic normalization and microvascular disease	45,413
Floyd A. Davis, M.D. Rush-Presbyterian-St. Luke's Medical Center Chicago, IL	Effects of plasmapheresis on signs and symptoms in MS	40,294
Rodney Langman, Ph.D. The Salk Institute San Diego, CA	Reconstructing immune responsiveness in vitro from characterized cell lines	16,500
Robert P. Metzger, Ph.D. San Diego State University San Diego, CA	Increased concentrations of glycolate in urine and serum of diabetic subjects	-0-
Donald E. McMillan, M.D. Sansum Medical Research Foundation Santa Barbara, CA	Studies of viscosity of diabetic serum	20,075
Willard P. VanderLaan, M.D. U. J. Lewis, Ph.D. Scripps Clinic and Research Foundation La Jolla, CA	Diabetogenic peptides of the anterior pituitary	64,650
John H. Vaughan, M.D. Scripps Clinic and Research Foundation La Jolla, CA	Thoracic duct drainage in rheumatoid arthritis	27,849
John A. Hamilton, Ph.D. Sloan-Kettering Institute New York, NY	An in vitro model of rheumatoid arthritis	14,684
William C. Dement, M.D., Ph.D. Stanford University Stanford, CA	Sleep, diabetes mellitus, and the autonomic nervous system	24,334
Leslie J. Dorfman, M.D. Stanford University Stanford, CA	Clinical neurophysiological studies in multiple sclerosis and related disorders	-0-

Schedule of Contributions, Gifts, Grants
Schedule 1 - 12/31/80

Kroc Foundation
36-6125258

<u>Principal Investigator and Institution</u>	<u>Title of Project</u>	<u>Amount</u>
Robert T. Wall, M.D. Hunter Little, M.D. Stanford University Stanford, CA	Intensive plasmapheresis in diabetic microangiopathy	\$ 11,000
Stephen G. Waxman, M.D., Ph.D. Stanford University Stanford, CA	Studies on neuronal properties in demyelinating disease	37,910
Milton Alter, M.D., Ph.D. Temple University School of Medicine Philadelphia, PA	B cell antigens in Israeli patients with multiple sclerosis	-0-
Ronald A. Pieringer, Ph.D. Temple University School of Medicine Philadelphia, PA	The association of galactosyl diacylglycerols with multiple sclerosis	29,226
Donald R. DiBona, Ph.D. University of Alabama in Birmingham Birmingham, AL	Structural correlates of diabetic nephropathy	6,109
Edward J. Miller, Ph.D. University of Alabama in Birmingham Birmingham, AL	Comprehensive evaluation of type II procollagen from cartilagenous tissue	6,079
Caroline S. Pace, Ph.D. University of Alabama in Birmingham Birmingham, AL	Implementation of a new procedure for determining the molecular requirements for insulin release	24,543
Martinez J. Hewlett, Ph.D. University of Arizona Tucson, AZ	Molecular aspects of bunyavirus infection in neural cells	15,906
Robert I. Mishell, M.D. University of California, Berkeley Berkeley, CA	Induction of resistance to the immuno- suppressive effects of glucocortico- steroids by bacterial peptidoglycan	34,966
M. Eric Gershwin, M.D. University of California, Davis Davis, CA	The pathogenesis of avian scleroderma	11,000
Thomas C. Cesario, M.D. University of California, Irvine Orange, CA	Detection of interferon in serum and synovial fluid of patients with rheumatic disease	15,014

<u>Principal Investigator and Institution</u>	<u>Title of Project</u>	<u>Amount</u>
Gale A. Granger, Ph.D. Jim Kostergaard, Ph.D. University of California, Irvine Irvine, CA	Demonstration of lymphocyte effector molecules in the tissue destructive lesions of rheumatoid arthritis	\$ 22,992
David T. Kingsbury, Ph.D. University of California, Irvine Irvine, CA	Molecular probes for the detection of mycoplasma and chlamydia in rheumatoid arthritis	28,667
Lewis M. Slater, M.D. Univeristy of California, Irvine Irvine, CA	Immunogenetics of human diabetes	40,464
Rodney Bluestone, M.D., F.R.C.P. University of California, Los Angeles	Cellular regulation in hyperuricemic nephropathy	15,265
Josiah Brown, M.D. University of California, Los Angeles	Ontogeny and typing of histocompatibility antigens in human fetuses	14,180
Yi-Han Chang, Ph.D. Carl M. Pearson, M.D. University of California, Los Angeles	Effects of colchicine on functions of polymorphonuclear leukocytes in patients with gout	20,919
George W. Ellison, M.D. University of California, Los Angeles	Drug studies in multiple sclerosis	81,137
John H. Fessler, Ph.D. University of California, Los Angeles	Basement membrane synthesis by blood vessel endothelial and other cells	14,295
Solomon A. Kaplan, M.D. University of California, Los Angeles	Respiratory distress syndrome in infants of diabetic mothers	18,146
Seymour R. Levin, M.D. University of California, Los Angeles	Insulin infusion and white cell ATPases	10,000
Timothy A. Miller, M.D. University of California, Los Angeles	Factors which influence survival of autogenous muscle grafts and muscle regeneration	11,000
Lawrence W. Myers, M.D. University of California, Los Angeles	Immunological studies in multiple sclerosis	-0-

Schedule of Contributions, Gifts, Grants
Schedule 1 - 12/31/80

Kroc Foundation
36-6125258

<u>Principal Investigator and Institution</u>	<u>Title of Project</u>	<u>Amount</u>
Jack G. Stevens, D.V.M., Ph.D. University of California, Los Angeles	The genetic and molecular basis for neurovirulence in herpes simplex viruses	\$ 12,314
Jack G. Stevens, D.V.M., Ph.D. University of California, Los Angeles	Pathogenesis of Marek's Disease: A model for the Landry-Guillain-Barre Syndrome	12,919
Wallace W. Tourtellotte, M.D., Ph.D. Hans Link, M.D. University of California, Los Angeles	A search for MS antigen utilizing kaotropic reagents	14,300
Marshall R. Urist, M.D. University of California, Los Angeles	The mechanism of bony overgrowth in arthritic disease	30,000
Stafford L. Warren, M.D. University of California, Los Angeles	Search for an active agent in rheumatoid arthritis	44,450
Jack A. Alhadeff, Ph.D. University of California, San Diego	Characterization of altered glycoprotein metabolism in human diabetes	15,180
Theodore Friedmann, M.D. University of California, San Diego	An approach to the isolation and characterization of the HGPET gene	8,250
David A. Gough, Ph.D. University of California, San Diego	Development of an implantable glucose sensor	5,000
Gordon H. Sato, Ph.D. University of California, San Diego	Growth of normal pancreatic beta cells in culture and the role of insulin in serum-free medium	7,276
J. Edwin Seegmiller, M.D. University of California, San Diego	Ochronotic arthritis and other forms of hereditary degenerative joint diseases	-0-
Nathan J. Zvaifler, M.D. University of California, San Diego	Cryoglobulins in the rheumatic diseases	-0-
Allen I. Arieff, M.D. University of California, San Francisco	Lactic acidosis: effects of therapy	34,109

Schedule of Contributions, Gifts, Grants
Schedule 1 - 12/31/80

Kroc Foundation
36-6125258

<u>Principal Investigator and Institution</u>	<u>Title of Project</u>	<u>Amount</u>
Michael Fischbach, M.D. University of California, San Francisco	Idiotypic-anti-idiotypic in murine lupus using monoclonal hybridoma induced anti-DNA antibodies	\$ 24,750
Ira M. Goldstein, M.D. University of California, San Francisco	Oxygen-derived free radicals and inflammation	8,627
John Hauser, M.D. University of California, San Francisco	3-D visualization of freeze-dried cells and molecules	33,000
Kenneth P. Johnson, M.D. University of California, San Francisco	Pathogenesis of multiple sclerosis	13,171
Robert R. McKendall, M.D. University of California, San Francisco	Cytotoxicity in multiple sclerosis	8,123
Jackson B. Pickett, M.D. University of California, San Francisco	Effect of insulin on neuromuscular transmission	11,764
William E. Seaman, M.D. University of California, San Francisco	Autoimmunity in androgen resistant BXSB mice	8,227
Marvin D. Siperstein, M.D., Ph.D. Kenneth R. Feingold, M.D., Ph.D. Millie H. Wiley, Ph.D. University of California, San Francisco	Derangement of cholesterol metabolism	39,548
Barry G. W. Arnason, M.D. University of Chicago Chicago, IL	Nonsense antibodies in CSF in multiple sclerosis	20,454
Arthur H. Rubenstein, M.D. University of Chicago Chicago, IL	Metabolic normalization and microvascular disease	19,998
Carol M. Brownschidle, Ph.D. University of Cincinnati Cincinnati, OH	The spontaneously diabetic BB rat: an animal model for the study of the effects of maternal diabetes mellitus on pregnancy, fetal maturation and neonatal health	7,840
Jerome H. Herman, M.D. University of Cincinnati Cincinnati, OH	Evaluation of mechanisms modulating the activation and release of chondrocyte proteinase activity	21,344

<u>Principal Investigator and Institution</u>	<u>Title of Project</u>	<u>Amount</u>
Jack S. Burks, M.D. University of Colorado Health Sciences Center Denver, CO	Transmission studies in multiple sclerosis	\$ 113,030
Henry N. Claman, M.D. University of Colorado Health Sciences Center Denver, CO	Immunologic responses to insulin	26,643
John S. Goff, M.D. University of Colorado Health Sciences Center Denver, CO	Investigation of diabetic diarrhea	9,900
Sylvia J. Kerr, Ph.D. University of Colorado Health Denver, CO	Methylation of membrane components and insulin action	16,084
Jerrold M. Olefsky, M.D. University of Colorado Health Sciences Center Denver, CO	Mechanism of insulin resistance in obesity	35,052
John E. Repine, M.D. University of Colorado Health Sciences Center Denver, CO	Killing graft macrophages with hyperoxia may facilitate pancreas transplantation in patients with diabetes mellitus	8,485
David W. Talmage, M.D. University of Colorado Health Sciences Center Denver, CO	The abrogation of immune rejection of endocrine grafts	16,354
Paula Dore-Duffy, Ph.D. University of Connecticut Health Center Farmington, CT	Lymphocyte adherence in multiple sclerosis	27,041
Kathrin A. Krakauer, Ph.D. University of Connecticut Health Center Farmington, CT	Synovial cell endocytosis and intracellular digestion: a study of the contribution of synovium to the turnover of joint constituents	11,409
Steven E. Pfeiffer, Ph.D. University of Connecticut Health Center Farmington, CT	Temperature-sensitive lines of myelinating oligodendroglia and Schwann cells	18,441

<u>Principal Investigator and Institution</u>	<u>Title of Project</u>	<u>Amount</u>
Marvin L. Tanzer, M.D. University of Connecticut Health Center Farmington, CT	The synthesis, assembly and secretion of procollagen: A biochemical and genetic approach	\$ 19,128
Laurence S. Braude, M.D. Jose G. Cunha-Vaz, Ph.D. University of Illinois at the Medical Center Chicago, IL	Studies in retrobulbar neuritis and multiple sclerosis	11,000
David L. Camenga, M.D. University of Maryland Baltimore, MD	Canine distemper virus induced demyelination: an animal model for multiple sclerosis	41,177
Arthur A. Like, M.D. University of Massachusetts Worcester, MA	Studies of the spontaneous juvenile diabetic syndrome of the bio breeding laboratory rat	42,591
David S. Howell, M.D. University of Miami Miami, FL	Role of matrix vesicles in chondrocalcinosis	28,916
Duane R. Schultz, Ph.D. University of Miami Miami, FL	Immunological and biochemical studies of a polysaccharide in an ant venom (Pseudomyrmex sp.): Its use for rheumatoid arthritis	28,438
Jack L. Kostyo, Ph.D. University of Michigan	Growth hormone: structure-function relationships	32,450
Thomas J. Schnitzer, M.D., Ph.D. University of Michigan Ann Arbor, MI	Pathogenesis of avian reovirus arthritis	13,860
Jose Barbosa, M.D. University of Minnesota Minneapolis, MN	Study of nondiabetic sibs with two or more diabetic siblings	11,000
Steven D. Douglas, M.D. University of Minnesota Minneapolis, MN	Immunology and function of mononuclear phagocytes in rheumatoid arthritis	9,625
T. Z. Csaky, M.D. University of Missouri-Columbia Columbia, MO	Epithelial sugar transport and diabetes mellitus	21,450
Pierre Robitaille, M.D. University of Montreal Canada	Relationship between sterility and sperm specific nuclear antigens in insulin-dependent diabetes	11,000

<u>Principal Investigator and Institution</u>	<u>Title of Project</u>	<u>Amount</u>
K.G.M.M. Alberti, M.D. University of Newcastle Upon Tyne England	Metabolic normalization and microvascular disease	\$ 5,723
R.Philip Eaton, M.D. University of New Mexico Albuquerque, NM	Glucose homeostasis in normal man, obesity and diabetes	-0-
R. Philip Eaton, M.D. William J. Spencer, Ph.D. University of New Mexico Albuquerque, NM	Bioengineering and biomedical development of a programmable/implantable insulin delivery system	38,813
Ralph C. Williams, Jr., M.D. University of New Mexico Albuquerque, NM	Projects related to immune mechanisms in the connective tissue diseases	28,700
Wesley W. Bullock, Ph.D. University of Oregon Health Sciences Center Portland, OR	Regulation of human neutrophils by monosaccharide-inhibitable lymphocyte signals	8,280
Steven D. Douglas, M.D. University of Pennsylvania Philadelphia, PA	Immunology and function of mononuclear phagocytes in rheumatoid arthritis	19,250
Kathrin A. Krakauer, Ph.D. University of Pennsylvania Philadelphia, PA	Synovial cell endocytosis and intracellular digestion: a study of the contribution of synovium to the turnover of joint constituents	6,826
H. Ralph Schumacher, Jr., M.D. University of Pennsylvania Philadelphia, PA	Articular chondrocalcinosis: factors in crystal deposition	-0-
Donald H. Silberberg, M.D. University of Pennsylvania Philadelphia, PA	Role of alpha-fetoprotein in modifying <u>in vitro</u> CNS demyelination	9,188
Robert Ader, Ph.D. Nicholas Cohen, Ph.D. University of Rochester Rochester, NY	Behavioral processes in the immuno- pharmacotherapy of autoimmune disease	8,227
Glenn L. Wilson, Ph.D. University of South Alabama Mobile, AL	The role of N-nitroso compounds in insulin-dependent diabetes mellitus	5,869

<u>Principal Investigator and Institution</u>	<u>Title of Project</u>	<u>Amount</u>
M. Michael Appleman, Ph.D. University of Southern California Los Angeles, CA	Regulatory mechanisms for lymphocyte activities	\$ 10,010
Karl Folkers, Ph.D. University of Texas at Austin Austin, TX	Synthesis of interferon and fragments	28,036
Karl Folkers, Ph.D. University of Texas at Austin Austin, TX	Cooperative research on the synthesis of peptides related to the human growth hormone and having diabetogenic activity	63,649
Grady F. Saunders, Ph.D. University of Texas System Cancer Center Houston, TX	Biosynthesis of glucagon	7,958
Peter Stastny, M.D. University of Texas Health Science Center Dallas, TX	HLA and the immune response in man; predisposition for rheumatoid arthritis	18,150
Donald H. Nelson, M.D. University of Utah Salt Lake City, UT	Study of the mechanisms by which corticosteroids produce their harmful effects when used in the treatment of arthritis	-0-
Donald H. Nelson, M.D. University of Utah Salt Lake City, UT	Relation of insulin effects on phospholipid metabolism to the increased incidence of cardiovascular disease in diabetes mellitus	16,468
John R. Ward, M.D. University of Utah Salt Lake City, UT	Etiology of human rheumatoid arthritis	-0-
Edward S. Horton, M.D. University of Vermont Burlington, VT	Effects of exercise on insulin resistance in muscle	12,636
Glenn L. Wilson, Ph.D. University of Vermont Burlington, VT	The role of N-nitroso compounds in insulin-dependent diabetes mellitus	11,000
Alan D. Rogol, M.D., Ph.D. University of Virginia Charlottesville, VA	Isolation and purification of a low molecular weight insulin antagonistic peptide from bovine pituitaries	4,981
William P. Arend, M.D. University of Washington Seattle, WA	Neutral protease secretion in human monocytes and macrophages	28,680

Schedule of Contributions, Gifts, Grants
Schedule 1 - 12/31/80

Kroc Foundation
36-6125258

<u>Principal Investigator and Institution</u>	<u>Title of Project</u>	<u>Amount</u>
John W. Ensink, M.D. University of Washington Seattle, WA	Glucose 'control' in diabetic humans using a glucose controlled insulin infusion system	\$ 14,455
Wilfred Y. Fujimoto, M.D. University of Washington Seattle, WA	Epidemiology of maturity-onset type diabetes and its morbid consequences	8,004
Daniel Porte, Jr., M.D. University of Washington Seattle, WA	The role of pancreatic islet cell electrical activity in glucose-induced insulin release	7,774
R. Paul Robertson, M.D. University of Washington Seattle, WA	Regulation of prostaglandin E receptors in pancreatic islet plasma membranes	14,458
Robert H. Williams, M.D. University of Washington Seattle, WA	Investigation pertinent to collagen changes in some common disorders	-0-
John Dupre, M.D. University of Western Ontario Canada	Metabolic normalization and microvascular disease	19,939
Thomas H. Steele, M.D. University of Wisconsin Madison, WI	Renal urate handling: relationships between hypertension, hyperuricemia, and the pathogenesis of gout	27,880
G. Guy Dodson, Ph.D. University of York England	Molecular structure and biological activity of insulin II	35,640
Claes Hellerstrom, M.D., Ph.D. Uppsala Universitet Sweden	Transplantation of fetal pancreas to diabetic patients	8,206
Raymond L. Woosley, M.D., Ph.D. Vanderbilt University Nashville, TN	Drug-induced lupus erythematosus: investigation of the role of reactive metabolites	15,800
Travis C. McGuire, D.V.M., Ph.D. Washington State University Pullman, WA	Studies on caprine arthritis- encephalitis	7,500
John Hauser, M.D. Washington University St. Louis, MO	3-D visualization of freeze-dried cells and molecules	17,345
Paul E. Lacy, M.D., Ph.D. Washington University St. Louis, MO	Allografts of isolated islets of Langerhans	82,667

Schedule of Contributions, Gifts, Grants
Schedule 1 - 12/31/80

Kroc Foundation
36-6125258

<u>Principal Investigator and Institution</u>	<u>Title of Project</u>	<u>Amount</u>
David W. Scharp, M.D. Washington University St. Louis, MO	Isolation and culture of islets for transplantation	\$ 75,723
David W. Scharp, M.D. Paul E. Lacy, M.D., Ph.D. Washington University St. Louis, MO	Studies on the isolation and transplan- tation of fetal pig islet tissue	19,250
Benjamin D. Schwartz, M.D., Ph.D. Washington University St. Louis, MO	A biochemical approach to study the relationship between HLA antigens and arthritic diseases	16,816
John L. Trotter, M.D. Washington University St. Louis, MO	Immunosuppression in multiple sclerosis	30,933
Margo P. Cohen, M.D. Wayne State University Detroit, MI	Cultured retinal microvessel cells: a model for study of diabetic retinopathy	15,116
F. Arthur McMorris, Ph.D. The Wistar Institute Philadelphia, PA	Effect of viruses on myelin functions in vitro	8,350
John Booss, M.D. Yale University New Haven, CT	Immunosuppression of B cell function in multiple sclerosis	24,512
Philip Felig, M.D. Yale University New Haven, CT	The metabolic response to exercise in normal and diabetic humans	49,908
Stephen E. Malawista, M.D. Yale University New Haven, CT	Clinical and laboratory studies of arthritis	-0-
Robert S. Sherwin, M.D. Yale University New Haven, CT	Metabolic normalization and microvascular disease	35,953
Joan A. Steitz, Ph.D. Yale University New Haven, CT	Structure-function studies of small RNPs precipitated by the lupus antibody Ia	7,212
Hunter L. Little, M.D. Zweng Memorial Retinal Research Menlo Park, CA	The effect of constant subcutaneous infusion of regular insulin on the course of diabetic retinopathy	11,000

Schedule of Contributions, Gifts, Grants

Kroc Foundation

Schedule 1 - 12/31/80

36-6125258

<u>Recipient</u>	<u>Amount</u>
Dartmouth Medical School Hanover, New Hampshire	\$ 171,733
Michigan State University East Lansing, Michigan	266,828
Southern California Tissue Society	500
March of Dimes	100
Grant Hospital Library Fund	100
University of Arizona	500
International Society of Endocrinology	1,500
Perspectives in Biology	350
American Diabetes Association - So. Cal. Affiliate	225
The Aesculapians	200
Hanot Foundation	10
Visiting Nurse Association	100
Regents of the University of Southern California	100
Reed Neurological Research	500
Arthritis Foundation	100
American Thyroid Association	300
National Multiple Sclerosis Society	100
Eisenhower Medical Center Diabetes Program	1,000
7th Parathyroid Conference	500
American Diabetes Association	125
National Multiple Sclerosis - N.Y. Chapter	200
Stanford University School of Medicine	100,000
Research to Prevent Blindness	100
Foundation Center	2,500
Alzheimers Disease	100
Western Association of Physicians	1,000
Family Renewal Center, Fairview - Southdale Hospital	10,000
Aloha House	2,000
United Way	<u>10</u>
 TOTAL CONTRIBUTIONS, GIFTS, GRANTS	 <u>\$ 4,787,086</u>

All grants are for medical/scientific research. No recipient is related to The Kroc Foundation in any way.

NAME THE KROC FOUNDATIONIDENTIFICATION NO. 36-6125258STATEMENT NO. 2 (990 PF)YEAR ENDED 12/31/80

	Col A	Col B & C	Col D
GROSS CONTRIBUTIONS - PART I, LINE 1			
RAY A KROC 10- 454	20,000		
1939 Y.L.A. LA JOLLA DRIVE 1/10 CASH	10,000		
SUITE 208			
LA JOLLA CA 92037			
	30,000	-	-
OTHER INCOME - PART I, LINE 12			
FILM AND BOOK RECEIPTS	232,313	232,313	-
GRANT REVENUES	55,232	-	-
MISCELLANEOUS	2,364	2,364	-
	289,909	234,677	-
TAXES - PART I, LINE 19			
PAYROLL TAXES	12,548	2,510	10,038
EXCISE TAXES	291,665	-	291,665
	304,213	2,510	301,703
OTHER EXPENSES - PART I, LINE 22			
AUTO EXPENSE	349		349
DUES AND SUBSCRIPTIONS	5461		5461
CONFERENCE EXPENSE	193,925		193,925
OFFICE EXPENSE	11,231	2,246	1,985
PUBLICATION EXPENSE	223,320		223,320
TELEPHONE AND UTILITIES	14,310	1,431	12,879
TRAVEL AND ENTERTAINMENT	31,675	6,335	25,340
LIBRARY EXPENSE	1,007		1,007
MAINTENANCE AND REPAIR	10,077		10,077
MISCELLANEOUS EXPENSE	1,003		1,003
INSURANCE EXPENSE	91,492		91,492
OPERATION ORK EXPENSE	979,126		979,126
	1,562,976	10,012	1,552,964

STATEMENT NO. 3 (990 PF) Part 2 of 2YEAR ENDED 12/31/80

	12/31/79		12/31/80	
	AMT	COST	AMT	COST
INVESTMENTS IN CORPORATE STOCKS - PART III, LINE 7				
ATLANTIC RICHFIELD		-	3000	190908
CONOCO, INC	6000	97388	6000	97388
QUIN & BEAUBREFF CORP	5000	96488	5000	96488
FEDERAL EXPRESS		-	1000	189190
GENERAL ELECTRIC	3500	61252	3500	61252
HALL-BURTON		-	4000	240323
HEWLETT PACKARD	4000	68727	4000	68727
HOSPITAL CORP OF AMERICA		-	3250	161900
HUGHES TOOL CO		-	3000	262123
IBM	8000	180359	8000	180359
JOHNSON & JOHNSON	2500	181850	2500	181850
LITTON INDUSTRIES	4000	166480	4000	166480
SCHUMACHER LTD	2000	146600	3000	146600
STANDARD OIL OF INDIANA	2500	159088	5000	159088
STANDARD OIL OF OHIO		-	4000	185503
TESS INSTRUMENTS		-	2000	169180
TIMES MIRAGE	6000	123790	6000	123790
WANG LABORATORIES		-	10319	215000
WARNER COMMUNICATIONS		-	2000	190180
WESTERN BANCORPORATION	6000	93500	6000	93500
STEIN ROE & FARNHAM CAPITAL OR FUND		-	10000	148000
STEIN ROE SPECIAL FUND	21099	128483	21099	128483
STEIN ROE UNIVERSAL FUND INC		-	6999	349380
MCDONALD'S CORPORATION	1000000	47987500	700000	38062500
BRISTOL MYERS CO	5000	148903		-
DUNLOPSON CO	1000	58927		-
PHILIP MORRIS INC	5000	122287		-
TEXTRONIC	3500	64891		-
STEIN ROE CASH RESERVE	137892	387892	SEE SCHEDULE 3, PAGE 1 OTHER INVESTMENTS	
		50177497		37869740
OTHER LIABILITIES - PART III, LINE 17				
FEDERAL EXCISE TAX PAYABLE		108200		288665
ACCURED PAYROLL TAXES		1226		1413
		109826		290210

IDENTIFICATION NO. 36-61232-58

STATEMENT NO. 4

YEAR ENDED 12/31/11

ACCOUNTANT STATIONERS & PRINTERS, LOS ANGELES

NAME THE KROC FOUNDATIONIDENTIFICATION NO. 36-6123251STATEMENT NO. 5YEAR ENDED 12/31/80

OFFICERS AND DIRECTORS - Part VI - 2

NAME AND ADDRESS	TITLE & TERM	CONTINGENT EXPENSES		
		BENEFIT PLAN	EXPENSE ACCT	COMPENSATION
RAY A KROC 1939 Villa La Jolla Drive, Suite 203 La Jolla CA 92037	CHAIRMAN OF THE BOARD & DIRECTOR - NOMINAL	NONE	NONE	NONE
ROBERT L KROC PO Box 547 Santa Ynez CA 93460	PRESIDENT & DIRECTOR - FULL	14,556	12,425	47,444
JOAN B KROC 1939 Villa La Jolla Drive, Suite 203 La Jolla, CA 92037	VICE PRESIDENT & DIRECTOR - PART	NONE	NONE	NONE
FRED L TURNER % McDonalds Corporation McDonalds Plaza, Oak Brook, IL 60521	VICE PRESIDENT & DIRECTOR - NOMINAL	NONE	NONE	NONE
LORRAINE E GARD 17715 Gulf Blvd, # 112 Redington Shores, FLA 33708	TREASURER & DIRECTOR - NOMINAL	NONE	NONE	NONE
BALLARD F SMITH PO Box 2000 San Diego CA 92120	SECRETARY & DIRECTOR - NOMINAL	NONE	NONE	NONE
G A HOREMAN 1939 Villa La Jolla Drive, Suite 203 La Jolla CA 92037	ASSISTANT SECRETARY - PART	NONE	NONE	NONE
JOAN LEWIN PO Box 547 Santa Ynez CA 93460	ASSISTANT SECRETARY - FULL	644	NONE	12,211
				59,655

STATEMENT 8D

36-67252-8

Supplement to 22a 21 Page 1 of 1

Year 1961/62

TOTALS

11228

88798

96.32m

53478

9062

6-OTHER

TOTAL DEPRECIATION THIS YEAR

2050

1980

**Annual Report
of Private
Foundation**

THE KROC FOUNDATION
Name

Under Section 6056 of the Internal Revenue Code

**This Annual Report and
the annual return of the foundation
filed on Form 990-PF are available for
public inspection. Consult an
Internal Revenue Service office for
further information.**

**Department
of the
Treasury
Internal
Revenue
Service**

**RECEIVED
FRESNO SERVICE CENTER
05 13 81 NO.
INTERNAL REVENUE SERVICE 308
FRESNO, CA**

Annual report for calendar year 1980, or fiscal year beginning , 1980, and ending , 19

Name of organization THE KROC FOUNDATION Employer identification number 36 6125258

Address of principal office

P.O. Box 547, SANTA YNEZ, CA 93460

If books and records are not at above address, specify where they are kept FORA HERRMAN, GRASS

MASSINGER, ACCOUNTANTS, INC., 600 B ST., SUITE 1200, SAN DIEGO, CA 92101

Name of principal officer of foundation

DR ROBERT L KROC

Public inspection (see instruction C):

(a) Enter date the notice of availability of annual report appeared in newspaper MAY 5, 1981

(b) Enter name of newspaper SANTA BARBARA NEWS-PRESS

(c) Check here ☒ if you have attached a copy of the newspaper notice as required by instruction C. (If the notice is not attached, the report will be considered incomplete.)

Check box for type of annual return ☒ Form 990-PF ☐ Form 5227

Check this box if your private foundation status terminated under section 507(b)(1)(A) ☐

Revenues

1 Amount of gifts, grants, bequests, and contributions received for the year	<u>50,000</u>
2 Gross income for the year	<u>692,495</u>
3 Total	<u>742,495</u>

Disbursements and Expenses

4 Disbursements for the year for exempt (charitable) purposes (including administrative expenses)	<u>690,919</u>
5 Expenses attributable to gross income (item 2 above) for the year	<u>126,636</u>

Foundation Managers

6 List all managers of the foundation (see section 4946(b)):

Name and title	Address where manager may be contacted during normal business hours
ROBERT L KROC - PRESIDENT	P.O. Box 547, SANTA YNEZ, CA 93460
RAY A KROC - CHAIRMAN OF THE BOARD	1939 VILLA LA JOLLA DR, #203
JOAN B KROC - VICE PRESIDENT	LA JOLLA CA 92037
FRED L TURNER - VICE PRESIDENT	McDONALD'S CORPORATION
	McDONALD'S PLAZA, DAKESBROOK IL 60521
LORRAINE E GRON - TREASURER	17715 GOLF BLVD, MIAMI HEDDINGTON SHORES, FLA 33573
BALLARD F SMITH - SECRETARY	P.O. Box 2000, SAN DIEGO, CA 92120
GA HOFFMAN - ASSISTANT SECRETARY	2757 VILLA LA JOLLA DR, #203
	LA JOLLA CA 92037
JOAN LAUREN - ASSISTANT SECRETARY	P.O. Box 547, SANTA YNEZ, CA 93460

6a List here any managers of the foundation who have contributed more than 2% of the total contributions received by the foundation before the close of any tax year (but only if they have contributed more than \$5,000). (See section 507(d)(2).)

RAY A KROC

6b List here any managers of the foundation who own 10% or more of the stock of a corporation (or an equally large portion of the ownership of a partnership or other entity) of which the foundation has a 10% or greater interest.

NONE

521810-1 FILMED

Balance Sheet For Books at the Beginning of the Year

Assets		Liabilities	
Cash (incl. CDs & Banks Accounts)	2,637.8	Accounts payable	2,637.8
Accounts and notes receivable	153,558	Contributions, gifts, grants, etc., payable	
Inventories		Bonds and notes payable	
Securities:		Mortgages payable	
Government obligations		Other liabilities	109,126
Corporate bonds		Total liabilities	136,410
Corporate stocks	5,177,497	Net Worth	
Mortgage loans		Principal fund	7,619,359
Real estate			
Less: Depreciation		Income fund	(183,033)
Other assets	86,795		
Less: Depreciation	36,320	Total net worth	523,902
Total assets	524,452.8	Total liabilities and net worth	524,452.8

Itemized Statement of Securities and All Other Assets Held at the Close of the Tax Year

Asset	Book value	Market value
CASH (INCLUDING CDs, BANKERS ACCEPT. & CASH RESERVES)	3,186,298	3,186,298
RECEIVABLES	14,065	14,065
FIXED ASSETS - NET	43,426	43,426
INVESTMENTS IN: GOVERNMENT OBLIGATIONS - SCH 2	1,723,088	1,658,450
CORPORATE BONDS - SCH 2	1,528,125	3,395,775
CORPORATE STOCKS - SCH 2	3,716,974	4,108,145
Total	46,364,742	49,379,489

Grants and Contributions Paid During the Year or Approved for Future Payment

Recipient	If recipient is an individual, show any relationship to any foundation manager or substantial contributor	Concise statement of purpose of grant or contribution	Amount
Name and address (home or business)			
Paid during year			
SCHEDULE 1	NONE		4787.86
Total			4787.86
Approved for future payment			
Total			4787.86

A notice has been published that this Annual Report is available for public inspection at the principal offices of the foundation, and copies of this Annual Report have been furnished to the Attorney General (or his/her designate) of each State entitled to receive reports as required by instruction E.

Signature of foundation manager: *Robert H. Green* Date: 5/11/81
 Title: President
 Preparer's signature: *Robert H. Green* 5/11/81
 Preparer's address: 640 Hickman, G-441, MASSINGDA, ACRES INC
 500 B Street, Suite 1200, San Diego, CA 92101
 75-2694124

Instructions

A. Who Must File.—An annual report is required from the foundation managers (as defined in section 4946(b)) of every organization that is a private foundation, including a nonexempt charitable trust described in section 4947(a)(1) that is treated as a private foundation, and that has at least \$5,000 of assets at any time during a tax year. A private foundation may file this form as its annual report.

Foundation managers who prefer not to use this form may prepare the report in printed, typewritten, or other form as long as it readily and legibly discloses the information required by section 6056 and the related regulations.

The annual report is required in addition to, and not in place of, the information required on Form 990-PF under section 6033.

B. Where and When to File.—File the annual report by the due date of the organization's annual information return, Form 990-PF or Form 5227, with the same service center where the return is filed. See the instructions for Form 990-PF and Form 5227 for more information.

C. Public Inspection of Private Foundation's Annual Report.—Foundation managers must make the annual report available for inspection during regular business hours at the principal office of the foundation, or may furnish a free copy to any person requesting inspection, provided the request is made at the time and in the manner prescribed in section 6104(d) and the related regulations.

A notice that the private foundation's annual report is available for inspection must be published by the due date for filing the annual report, including any extensions of time for filing. The notice must be published in a newspaper with general circulation in the county in which the principal office of the private foundation is located. (A newspaper or journal that publishes real

estate title transfers or other similar legal notices to satisfy State statutory requirements is also considered to have general circulation.) The notice must state that the annual report of the private foundation is available for inspection at its principal office during regular business hours by any citizen who requests inspection within 180 days after the date the notice is published. It must also show the address of the private foundation's principal office and the name of its principal manager. A private foundation may designate, in addition to its principal office, any other location at which its annual report will be made available. Another location may also be designated if the foundation has no principal office, or none other than the residence of a substantial contributor or foundation manager.

A copy of the notice must be attached to the annual report filed with the Internal Revenue Service. Because IRS makes the annual report available for public inspection under section 6104(d), the report and any attachments should be of such quality that they can be reproduced photographically.

A private foundation that has terminated its status as such under section 507(b)(1)(A), by distributing all its net assets to one or more public charities without retaining any right, title, or interest in those assets, should check the box on page 2 indicating termination. It does not have to publish notice of availability of its annual report or furnish the report to the public for the tax year in which it terminates (Reg. 1.507-2(a)(6)).

D. Signature and Verification.—The report must be signed by the foundation manager.

E. Furnishing of Copies to State Officers; Listing of States.—Section 6056 requires foundation managers to furnish a copy of the annual report to the Attorney General (or his or her designate) of (1) each State required to be listed in Part V of Form

990-PF or Part III of Form 5227, (2) the State in which the principal office of the foundation is located, (3) the State in which the foundation was incorporated or organized, and (4) any other State if requested. The report must be furnished at the same time it is sent to IRS. The foundation manager must attach to the report a copy of the Form 990-PF (or Form 5227) and a copy of any Form 4720 filed by the foundation with IRS for the year.

F. Penalty for Not Filing the Annual Report and Notice on Time.—If a private foundation does not file the annual report by the due date or does not comply with the requirements under instruction C, the person required to file will be charged a \$10 penalty under section 6652 for each day the report and notice are late, up to a maximum of \$5,000. If more than one person is required to file, all such persons will be jointly and separately liable for the penalty.

The penalty of \$10 a day may also be charged if a report is filed with information omitted. An entry should be made in each part of the form. If a part or line item does not apply, "N/A" (not applicable) should be entered in that space. (See Rev. Rul. 77-162, 1977-1 C.B. 400, for details.)

If the failure to file the annual report or comply with instruction C is willful, a penalty of \$1,000 for each such report or notice will be charged in addition to the above amount. (See section 6685.)

Organizations that have given notice under section 508(b) regarding their foundation status and have not received a determination letter from IRS on their status should refer to Rev. Proc. 79-8, 1979-1 C.B. 487, or later revisions for rules relating to relief from the penalty provision of section 6652.

G. Foreign Organizations.—A foreign organization which received substantially all of its support (other than gross investment income) from sources outside the United States will not be subject to the requirements of instructions C and E above.

4078
**In the Superior Court of the State of California
In and for the County of Santa Barbara**

In the Matter of. **THE KROC FOUNDATION**

PUBLIC NOTICE

PROOF OF PUBLICATION
(2015.5 C.C.P.)

STATE OF CALIFORNIA }
County of Santa Barbara } ss.

I am a citizen of the United States and a resident of the County aforesaid; I am over the age of eighteen years, and not a party to or interested in the above entitled matter. I am the principal clerk of the printer of the Santa Barbara News-Press, a newspaper of general circulation, printed and published daily in the City of Santa Barbara, County of Santa Barbara, and which newspaper has been adjudged a newspaper of general circulation by the Superior Court of the County of Santa Barbara, State of California, under date of June 9, 1952, Case Number 47171; that the notice herein mentioned was set in type not smaller than nonpareil and was preceded by words printed in black-face type not smaller than nonpareil, describing in general terms the purport and character of the notice intended to be given; that the notice, of which the annexed is a printed copy, has been published in each regular issue of said Santa Barbara News-Press on the following dates, to-wit:

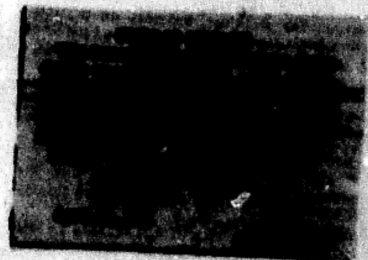
MAY 5

all in the year 19. **81**

I hereby certify (or declare) under penalty of perjury that the foregoing is true and correct.

Executed this **5th** day of **MAY** 19 **81** at Santa Barbara, CA.

Peggy A. Gray
Signature



SCHEDULE OF CONTRIBUTIONS,
GIFTS, GRANTS

THE KROC FOUNDATION

36-6125258

Schedule 1 - 12/31/80

<u>Principal Investigator and Institution</u>	<u>Title of Project</u>	<u>Amount</u>
Donald M. Marcus, M.D. Albert Einstein College of Medicine Bronx, NY	Glycosphingolipid antigens of human lymphocyte subpopulations	\$ 19,746
Kevin J. Lafferty, Ph.D. The Australian National University Australia	Human islet transplantation	16,686
Helen V. Bashir, MB, BS, FRCPA John P. Edmonds, MB, BS, FRACP Andrew F. Geczy, Ph.D., D.Sc. Australian Red Cross Society Australia	Role of environmental agents in the pathogenesis of the seronegative arthropathies: a biochemical study	16,500
Lawrence Chan, M.D. Baylor College of Medicine Houston, TX	Biochemical studies on somatostatin biosynthesis	32,105
Donald M. Marcus, M.D. Baylor College of Medicine Houston, TX	Glycosphingolipid antigens of human lymphocyte subpopulations	23,464
W. Page Faulk, M.D. Blond McIndoe Centre for Transplantation Biology England	Immunological studies of diabetic placenta	27,175
John I. Loewenstein, M.D. Boston University Medical Center Boston, MA	Ocular blood flow in diabetes mellitus	7,065
Neil B. Ruderman, M.D., Ph.D. Boston University School of Medicine (University Hospital) Boston, MA	Polyamine metabolism in diabetes	31,775
Michael P. Czech, M.D. Brown University Providence, RI	Chemistry of the insulin receptor	38,836
Jeremy P. Brockes, Ph.D. California Institute of Technology Pasadena, CA	A pituitary growth factor for cultured rat Schwann cells	39,770

<u>Principal Investigator and Institution</u>	<u>Title of Project</u>	<u>Amount</u>
Alan G. Goodridge, Ph.D. Case Western Reserve University Cleveland, OH	Hormone action in mutant hepatocytes	\$ 22,601
Richard W. Hanson, Ph.D. Case Western Reserve University Cleveland, OH	Role of insulin in the regulation of enzyme synthesis	19,490
Irving Kushner, M.D. Case Western Reserve University Cleveland, OH	Regulation of biosynthesis of murine amyloid-associated proteins	6,462
Charles J. Malemud, Ph.D. Roland W. Moskowitz, M.D. Victor M. Goldberg, M.D. Case Western Reserve University Cleveland, OH	Studies of human cartilage growth and metabolism in aging and osteoarthritis	16,566
Harvey C. Gonick, M.D. Cedars-Sinai Medical Center Los Angeles, CA	Role of chromium deficiency as a cause of diabetes	39,400
James R. Klinenberg, M.D. Cedars-Sinai Medical Center Los Angeles, CA	A double blind controlled study of therapeutic lymphoplasmaapheresis in rheumatoid arthritis	14,774
John J. Miller, III, M.D., Ph.D. Children's Hospital at Stanford Palo Alto, CA	Role of antigen-antibody complexes in juvenile rheumatoid arthritis	27,617
Howard L. Weiner, M.D. Children's Hospital Medical Center Boston, MA	Natural killer cell activity in patients with multiple sclerosis and the relationship between human natural killer cells and measles virus	17,738
Jack R. Battisto, Ph.D. Cleveland Clinic Foundation Cleveland, OH	Studies on the altered IgG human rheumatoid arthritis and development of a mouse model for adjuvant arthritis	36,960
Randall S. Krakauer, M.D. Cleveland Clinic Foundation Cleveland, OH	Investigation in suppressor cells and adaptive immunotherapy in autoimmunity	32,721
Peter C. Dowling, M.D. Stuart Cook, M.D. College of Medicine and Dentistry of New Jersey Newark, NJ	Lyme agent associated joint and nervous system disease on Cuttyhunk Island	11,000

<u>Principal Investigator and Institution</u>	<u>Title of Project</u>	<u>Amount</u>
John W. Prineas, M.D. College of Medicine and Dentistry of New Jersey Newark, NJ	Characterization of virus-like particles and demyelination in acute lesion in multiple sclerosis	\$ -0-
William V. Lumb, D.V.M., Ph.D. Colorado State University Fort Collins, CO	Kinetic analysis of cholesterol and bile acid metabolism after portacaval shunt in Yucatan swine	11,000
Eugene L. Pautler, Ph.D. Colorado State University Fort Collins, CO	Transport of glucose and amino acids across the blood-retinal barrier in streptozotocin-induced diabetic rats	7,986
Eugene L. Pautler, Ph.D. Colorado State University Fort Collins, CO	Glucose and amino acid transport in ocular tissues of dystrophic and diabetic rats	-0-
Robert W. Phillips, D.V.M., Ph.D. Colorado State University Fort Collins, CO	Yucatan miniature swine as a model for diabetes mellitus	100,148
Isidore Edelman, M.D. Columbia University College of Physicians and Surgeons New York, NY	Use of glucocorticoid analogs to characterize glucocorticoid receptors	34,090
Max J. Appel, D.V.M., Ph.D. James A. Baker Institute for Animal Health New York State College of Veterinary Medicine Cornell University Ithaca, NY	Canine viruses and multiple sclerosis	9,804
George Lust, Ph.D. James A. Baker Institute for Animal Health New York State College of Veterinary Medicine Cornell University Ithaca, NY	Canine hip dysplasia: a model for study of early events in osteoarthritis	39,617
Dolph O. Adams, M.D., Ph.D. Duke University Medical Center Durham, NC	Cytolytic proteases from mononuclear phagocytes in rheumatoid arthritis: effects on connective tissue cells and their regulation	12,530
Sergio L. Abreu, Ph.D. Fordham University Bronx, NY	Effects of interferon on experimental allergic encephalomyelitis and adjuvant arthritis	7,953

<u>Principal Investigator and Institution</u>	<u>Title of Project</u>	<u>Amount</u>
G. D. Aurbach, M.D. Edward M. Brown, M.D. Foundation for Advanced Education in the Sciences Bethesda, MD	Electrical potential of parathyroid cells in response to secretagogues and extracellular calcium	\$ 3,256
Samuel W. Cushman, Ph.D. Foundation for Advanced Education in the Sciences Bethesda, MD	Mechanism of insulin's stimulatory action on glucose transport in the isolated adipose cell	7,980
Monique E. Dubois-Dalcq, M.D. Foundation for Advanced Education in the Sciences Bethesda, MD	Culturing of large quantities of rat Schwann cells and study of their ability to myelinate or remyelinate axons in the central and peripheral nervous system	13,005
C. Ronald Kahn, M.D. Foundation for Advanced Education in the Sciences Bethesda, MD	Study of the metabolism, biochemical and structural characteristics of the insulin receptor in 3T3-L1 fatty fibroblasts	15,200
Loretta Leive, Ph.D. Foundation for Advanced Education in the Sciences Bethesda, MD	Phagocytosis of bacteria by macrophages: role of the polysaccharide of lipopoly- saccharide in interacting with macrophages and complement	5,000
Harvey B. Pollard, M.D., Ph.D. Foundation for Advanced Education in the Sciences Bethesda, MD	Molecular basis of insulin secretion from pancreatic islet B cells	7,500
Matthew M. Rechler, M.D. Foundation for Advanced Education in the Sciences Bethesda, MD	Structure and biosynthesis of an insulin- like growth factor: multiplication stimulating activity	27,457
Harry Keen, M.D., F.R.C.P. Guy's Hospital Medical School England	Metabolic normalization and microvascular disease	23,789
George A. Bray, M.D. Los Angeles County Harbor- UCLA Medical Center Torrance, CA	Hypothalamic peptides in diabetes and obesity	22,212
David W. Hollister, M.D. Los Angeles County Harbor- UCLA Medical Center Torrance, CA	The collagens of normal and osteoarthritic cartilage	42,141

Schedule of Contributions, Gifts, Grants
Schedule 1 - 12/31/80

Kroc Foundation
36-6125258

<u>Principal Investigator and Institution</u>	<u>Title of Project</u>	<u>Amount</u>
David L. Rimm, M.D., Ph.D. Los Angeles County Harbor- UCLA Medical Center Torrance, CA	The genetic heterogeneity of insulin dependent diabetes mellitus	\$ 39,641
Alfred L. Goldberg, M.D. Harvard Medical School Boston, MA	The rapid degradation of insulin and other hormones in bacterial cells	18,448
John W. Angers, M.D. Human Immunology Foundation New York, NY	A diagnostic test for MS	-0-
Alvin H. Sacks, Ph.D. Institute for Medical Research San Jose, CA	Studies of the vascular problems related to diabetes	20,574
Linda C. Cork, D.V.M., Ph.D. Johns Hopkins Hospital Baltimore, MD	Infectious leukoencephalomyelitis of goats, an animal model of demyelinating disease	39,741
Richard T. Johnson, M.D. Johns Hopkins University Baltimore, MD	The pathogenesis of measles encephalitis in Lima, Peru	9,148
M. Daniel Lane, Ph.D. Johns Hopkins University Baltimore, MD	Regulation of the synthesis, processing and turnover of the insulin receptor in the liver cell	16,300
Shirley E. Poduslo, Ph.D. Johns Hopkins Hospital Baltimore, MD	Oligodendroglia: a study of its surface components	31,645
William L. Chick, M.D. Joslin Diabetes Foundation Boston, MA	Studies of pancreatic beta cells in the pathogenesis and treatment of diabetes	49,940
Robert A. Greenwald, M.D. Long Island Jewish-Hillside Medical Center New Hyde Park, NY	Effects of superoxide radical on connective tissues	28,017
Ralph A. Meyer, Jr., Ph.D. Marquette University Milwaukee, WI	X-linked hypophosphatemia (vitamin D-resistant rickets): a mouse model	36,599
Robert B. Colvin, M.D. Massachusetts General Hospital Boston, MA	Suppression of experimental allergic encephalomyelitis by anti-idiotypes	8,247

Schedule of Contributions, Gifts, Grants
Schedule 1 - 12/31/80

Kroc Foundation
36-6125258

<u>Principal Investigator and Institution</u>	<u>Title of Project</u>	<u>Amount</u>
Henry J. Mankin, M.D. Massachusetts General Hospital Boston, MA	Demonstration of normal and osteo- arthritic chondrocyte heterogeneity using flow-through cytophotometry	\$ 8,191
Richard J. Wurtman, M.D. Massachusetts Institute of Technology Cambridge, MA	Effects of experimental diabetes on transport of hexoses and other substrates across the blood-brain barrier	22,517
John E. Gerich, M.D. Mayo Clinic and Mayo Medical School Rochester, MN	Control of somatostatin secretion in vitro	23,120
Vanda A. Lennon, M.D., Ph.D. Mayo Clinic and Mayo Medical School Rochester, MN	An immunologic approach to brain differentiation and myelinogenesis	47,455
F. John Service, M.D. Mayo Clinic and Mayo Medical School Rochester, MN	Metabolic normalization and microvascular disease	23,213
Thomas A. Ruff, M.D. Medical College of Georgia Augusta, GA	The relation of non-enzymatic glycosylation of lens crystallin to cataract formation in diabetes	13,222
Gordon C. Weir, M.D. Medical College of Virginia Richmond, VA	Separation of cell types of the islets of Langerhans	13,808
Richard L. Drake, Ph.D. Medical College of Wisconsin Milwaukee, WI	Insulin's effect on changing levels of pyruvate kinase mRNA	11,000
Daniel J. McCarty, M.D. Medical College of Wisconsin Milwaukee, WI	Turnover of calcium pyrophosphate dihydrate crystal in vivo	25,250
William L. Duax, Ph.D. Medical Foundation of Buffalo Buffalo, NY	Molecular structure and biological activity of insulin I	26,400
Christian Schwabe, Ph.D. Medical University of South Carolina Charleston, SC	A novel osteoarthritis model	17,341
Gabriel Virella, M.D., Ph.D. Medical University of South Carolina Charleston, SC	Detection, isolation and characterization of circulating immune complexes in diabetic patients	31,720

<u>Principal Investigator and Institution</u>	<u>Title of Project</u>	<u>Amount</u>
David Hamerman, M.D. Montefiore Hospital and Medical Center Bronx, NY	A possible viral agent in rheumatoid arthritis: effects on glycosaminoglycan synthesis by synovial cells	\$ 11,000
Eugene W. Straus, M.D. Montefiore Hospital and Medical Center Bronx, NY	Studies of the content and kinetics of CCK converting enzymes in obese rodent brains	14,438
Edward C. Franklin, M.D. New York University Medical Center New York, NY	Possible mechanisms for disordered immune regulation in rheumatoid arthritis and related diseases	16,140
Ira M. Goldstein, M.D. New York University Medical Center New York, NY	Oxygen-derived free radicals and inflam- mation	24,750
Mauro C. Dal Canto, M.D. Northwestern University Chicago, IL	Primary demyelination produced by ts mutants of viruses: morphologic, immunohistochemical, immunological and virological studies	35,607
Norbert Freinkel, M.D. Northwestern University Chicago, IL	Effects of pregnancy on intermediary metabolism and diabetes	-0-
Howard L. Lipton, M.D. Northwestern University Chicago, IL	Chronic central nervous system infections in mice produced by human enteroviruses	33,984
Steven G. Krakowka, D.V.M., Ph.D. Ohio State University Columbus, OH	Canine distemper virus and multiple sclerosis	31,658
Jerry R. Mendell, M.D. Ohio State University Columbus, OH	Ultrastructural immunocytochemical localization of the P2 protein in peripheral nervous system	17,739
Charles F. Howard, Ph.D. Oregon Regional Primate Research Center Beaverton, OR	Diabetes in nonhuman primates	14,288
Richard L. Stevens, Ph.D. Robert B. Brigham Hospital Boston, MA	Somatomedin and insulin control of proteoglycan biosynthesis in the human chondrocyte	5,500

<u>Principal Investigator and Institution</u>	<u>Title of Project</u>	<u>Amount</u>
Darrell Doyle, Ph.D. Roswell Park Memorial Institute Buffalo, NY	Transfer of the plasma membrane receptor for insulin from hepatocytes to cells not responsive to insulin	\$ 7,325
Eva M. Kohner, M.D., F.R.C.P. Royal Postgraduate Medical School England	Metabolic normalization and microvascular disease	45,413
Floyd A. Davis, M.D. Rush-Presbyterian-St. Luke's Medical Center Chicago, IL	Effects of plasmapheresis on signs and symptoms in MS	40,294
Rodney Langman, Ph.D. The Salk Institute San Diego, CA	Reconstructing immune responsiveness in vitro from characterized cell lines	16,500
Robert P. Metzger, Ph.D. San Diego State University San Diego, CA	Increased concentrations of glycolate in urine and serum of diabetic subjects	-0-
Donald E. McMillan, M.D. Sansum Medical Research Foundation Santa Barbara, CA	Studies of viscosity of diabetic serum	20,075
Willard P. VanderLaan, M.D. U. J. Lewis, Ph.D. Scripps Clinic and Research Foundation La Jolla, CA	Diabetogenic peptides of the anterior pituitary	64,650
John H. Vaughan, M.D. Scripps Clinic and Research Foundation La Jolla, CA	Thoracic duct drainage in rheumatoid arthritis	27,849
John A. Hamilton, Ph.D. Sloan-Kettering Institute New York, NY	An in vitro model of rheumatoid arthritis	14,684
William C. Dement, M.D., Ph.D. Stanford University Stanford, CA	Sleep, diabetes mellitus, and the autonomic nervous system	24,334
Leslie J. Dorfman, M.D. Stanford University Stanford, CA	Clinical neurophysiological studies in multiple sclerosis and related disorders	-0-

<u>Principal Investigator and Institution</u>	<u>Title of Project</u>	<u>Amount</u>
Robert T. Wall, M.D. Hunter Little, M.D. Stanford University Stanford, CA	Intensive plasmapheresis in diabetic microangiopathy	\$ 11,000
Stephen G. Waxman, M.D., Ph.D. Stanford University Stanford, CA	Studies on neuronal properties in demyelinating disease	37,910
Milton Alter, M.D., Ph.D. Temple University School of Medicine Philadelphia, PA	B cell antigens in Israeli patients with multiple sclerosis	-0-
Ronald A. Pieringer, Ph.D. Temple University School of Medicine Philadelphia, PA	The association of galactosyl diacylglycerols with multiple sclerosis	29,226
Donald R. DiBona, Ph.D. University of Alabama in Birmingham Birmingham, AL	Structural correlates of diabetic nephropathy	6,109
Edward J. Miller, Ph.D. University of Alabama in Birmingham Birmingham, AL	Comprehensive evaluation of type II procollagen from cartilaginous tissue	6,079
Caroline S. Pace, Ph.D. University of Alabama in Birmingham Birmingham, AL	Implementation of a new procedure for determining the molecular requirements for insulin release	24,543
Martinez J. Hewlett, Ph.D. University of Arizona Tucson, AZ	Molecular aspects of bunyavirus infection in neural cells	15,906
Robert I. Mishell, M.D. University of California, Berkeley Berkeley, CA	Induction of resistance to the immuno- suppressive effects of glucocortico- steroids by bacterial peptidoglycan	34,966
M. Eric Gershwin, M.D. University of California, Davis Davis, CA	The pathogenesis of avian scleroderma	11,000
Thomas C. Cesario, M.D. University of California, Irvine Orange, CA	Detection of interferon in serum and synovial fluid of patients with rheumatic disease	15,014

<u>Principal Investigator and Institution</u>	<u>Title of Project</u>	<u>Amount</u>
Gale A. Granger, Ph.D. Jim Kostergaard, Ph.D. University of California, Irvine Irvine, CA	Demonstration of lymphocyte effector molecules in the tissue destructive lesions of rheumatoid arthritis	\$ 22,992
David T. Kingsbury, Ph.D. University of California, Irvine Irvine, CA	Molecular probes for the detection of mycoplasma and chlamydia in rheumatoid arthritis	28,667
Lewis M. Slater, M.D. Univeristy of California, Irvine Irvine, CA	Immunogenetics of human diabetes	40,464
Rodney Bluestone, M.D., F.R.C.P. University of California, Los Angeles	Cellular regulation in hyperuricemic nephropathy	15,265
Josiah Brown, M.D. University of California, Los Angeles	Ontogeny and typing of histocompatibility antigens in human fetuses	14,180
Yi-Han Chang, Ph.D. Carl M. Pearson, M.D. University of California, Los Angeles	Effects of colchicine on functions of polymorphonuclear leukocytes in patients with gout	20,919
George W. Ellison, M.D. University of California, Los Angeles	Drug studies in multiple sclerosis	81,137
John H. Fessler, Ph.D. University of California, Los Angeles	Basement membrane synthesis by blood vessel endothelial and other cells	14,295
Solomon A. Kaplan, M.D. University of California, Los Angeles	Respiratory distress syndrome in infants of diabetic mothers	18,146
Seymour R. Levin, M.D. University of California, Los Angeles	Insulin infusion and white cell ATPases	10,000
Timothy A. Miller, M.D. University of California, Los Angeles	Factors which influence survival of autogenous muscle grafts and muscle regeneration	11,000
Lawrence W. Myers, M.D. University of California, Los Angeles	Immunological studies in multiple sclerosis	-0-

Schedule of Contributions, Gifts, Grants

Kroc Foundation

Schedule 1 - 12/31/80

36-6125258

<u>Principal Investigator and Institution</u>	<u>Title of Project</u>	<u>Amount</u>
Jack G. Stevens, D.V.M., Ph.D. University of California, Los Angeles	The genetic and molecular basis for neurovirulence in herpes simplex viruses	\$ 12,314
Jack G. Stevens, D.V.M., Ph.D. University of California, Los Angeles	Pathogenesis of Marek's Disease: A model for the Landry-Guillain-Barre Syndrome	12,919
Wallace W. Tourtellotte, M.D., Ph.D. Hans Link, M.D. University of California, Los Angeles	A search for MS antigen utilizing kaotropic reagents	14,300
Marshall R. Urist, M.D. University of California, Los Angeles	The mechanism of bony overgrowth in arthritic disease	30,000
Stafford L. Warren, M.D. University of California, Los Angeles	Search for an active agent in rheumatoid arthritis	44,450
Jack A. Alhadeff, Ph.D. University of California, San Diego	Characterization of altered glycoprotein metabolism in human diabetes	15,180
Theodore Friedmann, M.D. University of California, San Diego	An approach to the isolation and characterization of the HGPET gene	8,250
David A. Gough, Ph.D. University of California, San Diego	Development of an implantable glucose sensor	5,000
Gordon H. Sato, Ph.D. University of California, San Diego	Growth of normal pancreatic beta cells in culture and the role of insulin in serum-free medium	7,276
J. Edwin Seegmiller, M.D. University of California, San Diego	Ochronotic arthritis and other forms of hereditary degenerative joint diseases	-0-
Nathan J. Zvaifler, M.D. University of California, San Diego	Cryoglobulins in the rheumatic diseases	-0-
Allen I. Arieff, M.D. University of California, San Francisco	Lactic acidosis: effects of therapy	34,109

Schedule of Contributions, Gifts, Grants
Schedule 1 - 12/31/80

Kroc Foundation
36-6125258

<u>Principal Investigator and Institution</u>	<u>Title of Project</u>	<u>Amount</u>
Michael Fischbach, M.D. University of California, San Francisco	Idiotypic-anti-idiotypic in murine lupus using monoclonal hybridoma induced anti-DNA antibodies	\$ 24,750
Ira M. Goldstein, M.D. University of California, San Francisco	Oxygen-derived free radicals and inflammation	8,627
John Heuser, M.D. University of California, San Francisco	3-D visualization of freeze-dried cells and molecules	33,000
Kenneth P. Johnson, M.D. University of California, San Francisco	Pathogenesis of multiple sclerosis	13,171
Robert R. McKendall, M.D. University of California, San Francisco	Cytotoxicity in multiple sclerosis	8,123
Jackson B. Pickett, M.D. University of California, San Francisco	Effect of insulin on neuromuscular transmission	11,764
William E. Seaman, M.D. University of California, San Francisco	Autoimmunity in androgen resistant BXSB mice	8,227
Marvin D. Siperstein, M.D., Ph.D. Kenneth R. Feingold, M.D., Ph.D. Millie H. Wiley, Ph.D. University of California, San Francisco	Derangement of cholesterol metabolism	39,548
Barry G. W. Arnason, M.D. University of Chicago Chicago, IL	Nonsense antibodies in CSF in multiple sclerosis	20,454
Arthur H. Rubenstein, M.D. University of Chicago Chicago, IL	Metabolic normalization and microvascular disease	19,996
Carol M. Brownschidle, Ph.D. University of Cincinnati Cincinnati, OH	The spontaneously diabetic BB rat: an animal model for the study of the effects of maternal diabetes mellitus on pregnancy, fetal maturation and neonatal health	7,840
Jerome H. Herman, M.D. University of Cincinnati Cincinnati, OH	Evaluation of mechanisms modulating the activation and release of chondrocyte proteinase activity	21,344

Schedule of Contributions, Gifts, Grants
Schedule 1 - 12/31/80

Kroc Foundation
36-6125258

<u>Principal Investigator and Institution</u>	<u>Title of Project</u>	<u>Amount</u>
Jack S. Burks, M.D. University of Colorado Health Sciences Center Denver, CO	Transmission studies in multiple sclerosis	\$ 113,030
Henry N. Claman, M.D. University of Colorado Health Sciences Center Denver, CO	Immunologic responses to insulin	26,643
John S. Goff, M.D. University of Colorado Health Sciences Center Denver, CO	Investigation of diabetic diarrhea	9,900
Sylvia J. Kerr, Ph.D. University of Colorado Health Denver, CO	Methylation of membrane components and insulin action	16,084
Jerrold M. Olefsky, M.D. University of Colorado Health Sciences Center Denver, CO	Mechanism of insulin resistance in obesity	35,052
John E. Repine, M.D. University of Colorado Health Sciences Center Denver, CO	Killing graft macrophages with hyperoxia may facilitate pancreas transplantation in patients with diabetes mellitus	8,485
David W. Talmage, M.D. University of Colorado Health Sciences Center Denver, CO	The abrogation of immune rejection of endocrine grafts	16,354
Paula Dore-Duffy, Ph.D. University of Connecticut Health Center Farmington, CT	Lymphocyte adherence in multiple sclerosis	27,041
Kathrin A. Krakauer, Ph.D. University of Connecticut Health Center Farmington, CT	Synovial cell endocytosis and intracellular digestion: a study of the contribution of synovium to the turnover of joint constituents	11,409
Steven E. Pfeiffer, Ph.D. University of Connecticut Health Center Farmington, CT	Temperature-sensitive lines of myelinating oligodendroglia and Schwann cells	18,441

Schedule of Contributions, Gifts, Grants

Kroc Foundation

Schedule 1 - 12/31/80

36-6125258

<u>Principal Investigator and Institution</u>	<u>Title of Project</u>	<u>Amount</u>
Marvin L. Tanzer, M.D. University of Connecticut Health Center Farmington, CT	The synthesis, assembly and secretion of procollagen: A biochemical and genetic approach	\$ 19,128
Laurence S. Braude, M.D. Jose G. Cunha-Vaz, Ph.D. University of Illinois at the Medical Center Chicago, IL	Studies in retrobulbar neuritis and multiple sclerosis	11,000
David L. Camenga, M.D. University of Maryland Baltimore, MD	Canine distemper virus induced demyelination: an animal model for multiple sclerosis	41,177
Arthur A. Like, M.D. University of Massachusetts Worcester, MA	Studies of the spontaneous juvenile diabetic syndrome of the bio breeding laboratory rat	42,591
David S. Howell, M.D. University of Miami Miami, FL	Role of matrix vesicles in chondrocalcinosis	28,916
Duane R. Schultz, Ph.D. University of Miami Miami, FL	Immunological and biochemical studies of a polysaccharide in an ant venom (Pseudomyrmex sp.): Its use for rheumatoid arthritis	28,438
Jack L. Kostyo, Ph.D. University of Michigan	Growth hormone: structure-function relationships	32,450
Thomas J. Schnitzer, M.D., Ph.D. University of Michigan Ann Arbor, MI	Pathogenesis of avian reovirus arthritis	13,860
Jose Barbosa, M.D. University of Minnesota Minneapolis, MN	Study of nondiabetic sibs with two or more diabetic siblings	11,000
Steven D. Douglas, M.D. University of Minnesota Minneapolis, MN	Immunology and function of mononuclear phagocytes in rheumatoid arthritis	9,625
T. Z. Csaky, M.D. University of Missouri-Columbia Columbia, MO	Epithelial sugar transport and diabetes mellitus	21,450
Pierre Robitaille, M.D. University of Montreal Canada	Relationship between sterility and sperm specific nuclear antigens in insulin-dependent diabetes	11,000

<u>Principal Investigator and Institution</u>	<u>Title of Project</u>	<u>Amount</u>
K.G.M.M. Alberti, M.D. University of Newcastle Upon Tyne England	Metabolic normalization and microvascular disease	\$ 5,723
R.Philip Eaton, M.D. University of New Mexico Albuquerque, NM	Glucose homeostasis in normal man, obesity and diabetes	-0-
R. Philip Eaton, M.D. William J. Spencer, Ph.D. University of New Mexico Albuquerque, NM	Bioengineering and biomedical development of a programmable/implantable insulin delivery system	38,813
Ralph C. Williams, Jr., M.D. University of New Mexico Albuquerque, NM	Projects related to immune mechanisms in the connective tissue diseases	28,700
Wesley W. Bullock, Ph.D. University of Oregon Health Sciences Center Portland, OR	Regulation of human neutrophils by monosaccharide-inhibitable lymphocyte signals	8,280
Steven D. Douglas, M.D. University of Pennsylvania Philadelphia, PA	Immunology and function of mononuclear phagocytes in rheumatoid arthritis	19,250
Kathrin A. Krakauer, Ph.D. Univeristy of Pennsylvania Philadelphia, PA	Synovial cell endocytosis and intracellular digestion: a study of the contribution of synovium to the turnover of joint constituents	6,826
H. Ralph Schumacher, Jr., M.D. University of Pennsylvania Philadelphia, PA	Articular chondrocalcinosis: factors in crystal deposition	-0-
Donald H. Silberberg, M.D. University of Pennsylvania Philadelphia, PA	Role of alpha-fetoprotein in modifying <u>in vitro</u> CNS demyelination	9,188
Robert Ader, Ph.D. Nicholas Cohen, Ph.D. University of Rochester Rochester, NY	Behavioral processes in the immuno- pharmacotherapy of autoimmune disease	8,227
Glenn L. Wilson, Ph.D. University of South Alabama Mobile, AL	The role of N-nitroso compounds in insulin-dependent diabetes mellitus	5,869

Schedule of Contributions, Gifts, Grants
Schedule 1 - 12/31/80

Kroc Foundation
36-6125258

<u>Principal Investigator and Institution</u>	<u>Title of Project</u>	<u>Amount</u>
M. Michael Appleman, Ph.D. University of Southern California Los Angeles, CA	Regulatory mechanisms for lymphocyte activities	\$ 10,010
Karl Folkers, Ph.D. University of Texas at Austin Austin, TX	Synthesis of interferon and fragments	28,036
Karl Folkers, Ph.D. University of Texas at Austin Austin, TX	Cooperative research on the synthesis of peptides related to the human growth hormone and having diabetogenic activity	63,649
Grady F. Saunders, Ph.D. University of Texas System Cancer Center Houston, TX	Biosynthesis of glucagon	7,958
Peter Stastny, M.D. University of Texas Health Science Center Dallas, TX	HLA and the immune response in man; predisposition for rheumatoid arthritis	18,150
Donald H. Nelson, M.D. University of Utah Salt Lake City, UT	Study of the mechanisms by which corticosteroids produce their harmful effects when used in the treatment of arthritis	-0-
Donald H. Nelson, M.D. University of Utah Salt Lake City, UT	Relation of insulin effects on phospholipid metabolism to the increased incidence of cardiovascular disease in diabetes mellitus	16,468
John R. Ward, M.D. University of Utah Salt Lake City, UT	Etiology of human rheumatoid arthritis	-0-
Edward S. Horton, M.D. University of Vermont Burlington, VT	Effects of exercise on insulin resistance in muscle	12,636
Glenn L. Wilson, Ph.D. University of Vermont Burlington, VT	The role of N-nitroso compounds in insulin-dependent diabetes mellitus	11,000
Alan D. Rogol, M.D., Ph.D. University of Virginia Charlottesville, VA	Isolation and purification of a low molecular weight insulin antagonistic peptide from bovine pituitaries	4,981
William P. Arend, M.D. University of Washington Seattle, WA	Neutral protease secretion in human monocytes and macrophages	28,680

Schedule of Contributions, Gifts, Grants
Schedule 1 - 12/31/80

Kroc Foundation
36-6125258

<u>Principal Investigator and Institution</u>	<u>Title of Project</u>	<u>Amount</u>
John W. Ensink, M.D. University of Washington Seattle, WA	Glucose 'control' in diabetic humans using a glucose controlled insulin infusion system	\$ 14,455
Wilfred Y. Fujimoto, M.D. University of Washington Seattle, WA	Epidemiology of maturity-onset type diabetes and its morbid consequences	8,004
Daniel Porte, Jr., M.D. University of Washington Seattle, WA	The role of pancreatic islet cell electrical activity in glucose-induced insulin release	7,774
R. Paul Robertson, M.D. University of Washington Seattle, WA	Regulation of prostaglandin E receptors in pancreatic islet plasma membranes	14,458
Robert H. Williams, M.D. University of Washington Seattle, WA	Investigation pertinent to collagen changes in some common disorders	-0-
John Dupre, M.D. University of Western Ontario Canada	Metabolic normalization and microvascular disease	19,939
Thomas H. Steele, M.D. University of Wisconsin Madison, WI	Renal urate handling: relationships between hypertension, hyperuricemia, and the pathogenesis of gout	27,880
G. Guy Dodson, Ph.D. University of York England	Molecular structure and biological activity of insulin II	35,640
Claes Hellerstrom, M.D., Ph.D. Uppsala Universitet Sweden	Transplantation of fetal pancreas to diabetic patients	8,206
Raymond L. Woosley, M.D., Ph.D. Vanderbilt University Nashville, TN	Drug-induced lupus erythematosus: investigation of the role of reactive metabolites	15,800
Travis C. McGuire, D.V.M., Ph.D. Washington State University Pullman, WA	Studies on caprine arthritis- encephalitis	7,500
John Heuser, M.D. Washington University St. Louis, MO	3-D visualization of freeze-dried cells and molecules	17,345
Paul E. Lacy, M.D., Ph.D. Washington University St. Louis, MO	Allografts of isolated islets of Langerhans	82,667

Schedule of Contributions, Gifts, Grants

Schedule 1 - 12/31/80

Kroc Foundation

36-6125258

<u>Principal Investigator and Institution</u>	<u>Title of Project</u>	<u>Amount</u>
David W. Scharp, M.D. Washington University St. Louis, MO	Isolation and culture of islets for transplantation	\$ 75,723
David W. Scharp, M.D. Paul E. Lacy, M.D., Ph.D. Washington University St. Louis, MO	Studies on the isolation and transplan- tation of fetal pig islet tissue	19,250
Benjamin D. Schwartz, M.D., Ph.D. Washington University St. Louis, MO	A biochemical approach to study the relationship between HLA antigens and arthritic diseases	16,816
John L. Trotter, M.D. Washington University St. Louis, MO	Immunosuppression in multiple sclerosis	30,933
Margo P. Cohen, M.D. Wayne State University Detroit, MI	Cultured retinal microvessel cells: a model for study of diabetic retinopathy	15,116
F. Arthur McMorris, Ph.D. The Wistar Institute Philadelphia, PA	Effect of viruses on myelin functions in vitro	8,350
John Booss, M.D. Yale University New Haven, CT	Immunosuppression of B cell function in multiple sclerosis	24,512
Philip Felig, M.D. Yale University New Haven, CT	The metabolic response to exercise in normal and diabetic humans	49,908
Stephen E. Malawista, M.D. Yale University New Haven, CT	Clinical and laboratory studies of arthritis	-0-
Robert S. Sherwin, M.D. Yale University New Haven, CT	Metabolic normalization and microvascular disease	35,953
Joan A. Steitz, Ph.D. Yale University New Haven, CT	Structure-function studies of small RNPs precipitated by the lupus antibody Ia	7,212
Hunter L. Little, M.D. Zweng Memorial Retinal Research Menlo Park, CA	The effect of constant subcutaneous infusion of regular insulin on the course of diabetic retinopathy	11,000

Schedule of Contributions, Gifts, Grants

Kroc Foundation

Schedule 1 - 12/31/80

36-6125258

<u>Recipient</u>	<u>Amount</u>
Dartmouth Medical School Hanover, New Hampshire	\$ 171,733
Michigan State University East Lansing, Michigan	266,828
Southern California Tissue Society	500
March of Dimes	100
Grant Hospital Library Fund	100
University of Arizona	500
International Society of Endocrinology	1,500
Perspectives in Biology	350
American Diabetes Association - So. Cal. Affiliate	225
The Aesculapians	200
Hanot Foundation	10
Visiting Nurse Association	100
Regents of the University of Southern California	100
Reed Neurological Research	500
Arthritis Foundation	100
American Thyroid Association	300
National Multiple Sclerosis Society	100
Eisenhower Medical Center Diabetes Program	1,000
7th Parathyroid Conference	500
American Diabetes Association	125
National Multiple Sclerosis - N.Y. Chapter	200
Stanford University School of Medicine	100,000
Research to Prevent Blindness	100
Foundation Center	2,500
Alzheimers Disease	100
Western Association of Physicians	1,000
Family Renewal Center, Fairview - Southdale Hospital	10,000
Aloha House	2,000
United Way	<u>10</u>
 TOTAL CONTRIBUTIONS, GIFTS, GRANTS	 <u>\$ 4,787,086</u>

All grants are for medical/scientific research. No recipient is related to The Kroc Foundation in any way.

NAME THE KROC FOUNDATIONIDENTIFICATION NO. 36-6125251STATEMENT NO. 2 (99. 92)YEAR ENDED 12/31/80

SCHEDULE OF MARKETABLE SECURITIES	#	SH	AMT	COST	MARKET VALUE
GOVERNMENT OBLIGATIONS:					
US TREASURY NOTE	300	000		499 045	507 200
FEDERAL NATL MORTGAGE ASSN	500	000		480 156	465 000
FEDERAL NATL MORTGAGE ASSN	250	000		244 688	232 500
FEDERAL FARM CREDIT BANKS	500	000		297 219	458 750
				1723 088	1658 450
CORPORATE BONDS:					
AMERICAN MEDICAL INTL CVDB	163	000		165 000	249 150
BOISE CASCADE BOND	500	000		500 000	439 355
DIGITAL EQUIP CVDB	200	000		220 000	267 000
FLORIDA POWER & LIGHT 1ST MFG BOND	500	000		474 375	413 605
GMAC DB	500	000		495 000	445 125
HERCULES INC NOTE	500	000		478 750	456 085
INTL MINERAL & CHEMICAL BOND	500	000		495 000	445 520
LONG STAR INDUSTRIES DB	500	000		500 000	457 925
MARCO CVDB	200	000		200 000	222 000
				3528 125	3395 775
CORPORATE STOCKS:					
ATLANTIC RICHFIELD	3000			190 905	190 895
CANACO INC	6000			97 388	192 250
DUNN HANSTREET CORP	5000			96 428	215 000
FEDERAL EXPRESS	1000			189 190	384 000
GENERAL ELECTRIC	3500			61 252	214 376
HALLIBURTON	4000			240 323	334 000
HEWLETT PACKARD	4000			63 727	358 000
HOUSTON CORP OF AMERICA	5250			141 700	284 813
HUGHES TOOL CO	3000			262 125	219 875
IBM	3000			180 259	203 626
JOHNSON & JOHNSON	2600			181 850	249 375
LITTON INDUSTRIES	4080			166 480	362 610
SCHLUMBERGER LTD	3000			146 600	351 000
SIGNARO OIL - INDIANA	5000			159 088	399 375
SIGNARO OIL - OHIO	4000			185 503	211 000
TEXAS INSTRUMENTS	2000			169 180	241 500
TIMES MIRROR	6000			125 790	249 000
WANG LABORATORIES	10 319			213 000	425 947
WARNER COMMUNICATIONS	4000			190 140	310 500
WESTERN BANCORPORATION	6000			95 500	216 000
STEIN ROE & FARNHAM GP OF FUND	10 000			148 000	260 500
STEIN ROE SPECIAL FUND	21 078			121 482	309 086
STEIN ROE UNIVERSE FUND INC	6999			349 380	316 765
W. DONALDSON CORPORATION	700 000			34 062 500	34 125 000
				37 169 770	41 081 475

990-PF

Return of Private Foundation Exempt from Income Tax

Under Section 501(c)(3) of the Internal Revenue Code

1980

For the calendar year 1980, or tax year beginning

1980 and ending

19

Please type,
print, or
attach label.
See Specific
Instructions

Name of organization

YJ 36-6125258 990PF 12 4 0- 03

Address

KROC FOUNDATION

City

SAN DIEGO

State

CA

Zip

92109

Employer identification number

36 6125258

Fair market value of assets at end of year

47379489

If address changed, check here ☒Foreign organizations, check here ☐The books are in care of FORA HICKMAN, GILLES & MASSINGER, ACCOUNTANTS, INC.Located at 600 S ST #1200 SAN DIEGO, CA 92101 Telephone no. (619) 231-0331

Part I Analysis of Revenue and Expenses (See instructions for Part I)

	(A) Revenue and expenses per books	(B) Computation of net investment income	(C) Computation of adjusted net income	(D) Disbursements for exempt purpose
1 Gross contributions, gifts, grants, etc. (see instructions)	50000			
2 Contributions from split-interest trusts (see instructions)				
3 Gross dues and assessments	361000	361000	361000	
4 Interest	1016411	1016411	1016411	
5 Dividends				
6 Gross rents and royalties				
7 Net gain or (loss) from sale of assets not on line 11	<974825>			
8 Capital gain net income (see instructions)		12900175		
9 Net short-term capital gain (see instructions)				
10 Income modifications (see instructions)				
11 Gross profit from any business activities: (Gross receipts \triangleright \$ minus cost of sales \triangleright \$) (see instructions)				
12 Other income (attach schedule)	219709	12364	234677	
13 Total—add lines 1 through 12	742495	1427995	1612088	
14 Compensation of officers, etc. (see instructions)	62000	12400	12400	49600
15 Other salaries and wages	244083	48817	48817	195266
16 (a) Pension plan contributions (enter number of plans \triangleright)				
(b) Other employee benefits	10807	3161	3161	8646
17 Investment, legal, and other professional services	55378	41684	41684	13994
18 Interest				
19 Taxes (see instructions)	304213	2510	2510	10081
20 Depreciation, amortization, and depletion (see instructions)	9052		9052	
21 Rent				
22 Other expenses (attach schedule)	1562976	10012	10012	1552964
23 Contributions, gifts, grants (see instructions)	4787086			4787086
24 Total—add lines 14 through 23	7035795	117584	126686	6617494
25 (a) Excess of revenue over expenses: Line 13 minus line 24	<6293800>			
(b) Net investment income (if negative enter -0-)		14162366		
(c) Adjusted net income (see instructions) (if negative enter -0-)			1485452	

Part II Excise Tax On Investment Income

1 Domestic organizations enter 2% of line 25(b). Foreign organizations enter 4% of line 25(b)	283247
2 Credits: (a) Foreign organizations—tax withheld at source (b) Tax paid with application for extension of time to file (Form 2758)	287894
3 Tax due—line 1 minus line 2. Pay in full with return. Make check or money order payable to Internal Revenue Service (write employer identification number on check or money order)	4647
4 Overpayment—line 2 minus line 1	
Foreign organization—Enter book value \triangleright \$ and fair market value \triangleright \$ of investment assets held in U.S.	

Under penalties of perjury, I declare that I have examined this return, including accompanying schedules and statements, and to the best of my knowledge and belief it is true, correct, and complete. Declaration of preparer (other than taxpayer) is based on all information of which the preparer has any knowledge.

Sign Here

Signature of officer or trustee

Date

Preparer's signature

FORA HICKMAN, GILLES & MASSINGER, ACCOUNTANTS, INC.

600 S ST #1200 SAN DIEGO CA 92101

Preparer's address (or employer's name and address) 95 2692824

Part III Balance Sheets		Beginning of tax year		End of tax year	
		(A) Amount	(B) Total	(C) Amount	(D) Total
Assets					
1 Cash:					
(a) Savings and interest-bearing accounts		69,142		73,100	
(1) Other		276,711	96,813	369,299	109,029
2 Accounts receivable net					
3 Notes receivable net (attach schedule)					
4 Inventories					
5 Government obligations:					
(a) U.S. and instrumentalities	Sec. 3			172,308	
(b) State, subdivisions of States					172,308
6 Investments in corporate bonds, etc. (attach schedule)	Sec. 3				352,815
7 Investments in corporate stocks (attach schedule)	Sec. 3		50,774.97		378,697.11
8 Mortgage loans (number of loans ▶)					
9 Other investments (attach schedule)	Sec. 3		196,689.5		50,774.97
10 Depreciable (depletable) assets (attach schedule):					
(a) Held for investment purposes					
(b) Minus accumulated depreciation					
(c) Held for charitable purposes	Sec. 50	84,793		88,791	
(d) Minus accumulated depreciation		36,320	50,475	45,372	53,426
11 Land:					
(a) Held for investment purposes					
(b) Held for charitable purposes					
12 Other assets (attach schedule)	Sec. 3		153,558		14,065
13 Total assets			524,452.88		463,647.21
Liabilities					
14 Accounts payable			26,384		58,734
15 Contributions, gifts, grants, payable					
16 Mortgages and notes payable (attach schedule)					
17 Other liabilities (attach schedule)	Sec. 3		109,826		29,020
18 Total liabilities			136,210		87,754
Net Worth (Fund Balances)					
19 Principal fund ▶			70,619.359		69,694.534
20 Income fund ▶					
			<193,088.1>		<236,788.6>
21 Total net worth (fund balances)			523,090.28		460,157.21
22 Total liabilities and net worth (line 18 plus line 21)			524,452.88		463,647.21

Part IV Analysis of Changes in Net Worth

1 Total net worth at beginning of year—Part III, Column B, line 21	523,090.28
2 Enter amount from Part I, line 25(a)	<629,330.0>
3 Other increases not included in line 2 (itemize) ▶	
4 Total of lines 1, 2, and 3	460,157.21
5 Decreases not included in line 2 (itemize) ▶	
6 Total net worth at end of year (line 4 minus line 5)—Part III, Column D, line 21	460,157.21

Part V Statements Regarding Activities

File Form 4720 if you answer "No" to question 10(a), 11(b), or 14(b); or if you answer "Yes," to question 10(c), 12(b), 13(a), or 13(b).

	Yes	No
1 (a) During the tax year, did you attempt to influence any national, State, or local legislation?		✓
(b) During the year, did you participate or intervene in any political campaign?		✓
(c) Did you spend more than \$100 during the year (either directly or indirectly) for political purposes (see instructions for definition)?		✓
If you answered "Yes" to 1(a), (b), or (c), attach a detailed description of the activities and copies of any materials published or distributed by the organization in connection with the activities.		
(d) Did you file Form 1120-POL?		✓
2 Have you engaged in any activities which have not previously been reported to the Internal Revenue Service?		✓
If "Yes," attach a detailed description of the activities.		
3 Have you made any changes, not previously reported to the IRS, in your governing instrument, articles of incorporation, or bylaws, or other similar instruments?		✓
If "Yes," attach a conformed copy of the changes.		
4 (a) Did you have unrelated business gross income of \$1,000 or more during the year?		✓
(b) If "Yes," have you filed a tax return on Form 990-T for this year?		✓
5 Was there a liquidation, termination, dissolution, or substantial contraction during the year?		✓
If "Yes," attach a schedule for each asset disposed of showing: the type of asset, the date of disposition, its cost or other basis, its fair market value on date of disposition, and the name and address of each recipient to whom assets were distributed.		
6 (a) Did you have at least \$5,000 in assets at any time during the year?	✓	
(b) If "Yes," did you file the annual report required by section 6056 (see Form 990-AR for instructions)?	✓	
7 Are the requirements of section 508(e) (relating to governing instruments) satisfied? (See instructions)	✓	
If "Yes," are the requirements satisfied by:		
(a) Language in the governing instrument (original or as amended), or	✓	
(b) Enactment of State legislation that effectively amends the governing instrument with no mandatory directions in the governing instrument that conflict with the State law?		
8 (a) Enter States to which the foundation reports or with which it is registered (see instructions) ▶		
CALIFORNIA AND ILLINOIS		
(b) If you answered 6(a) "Yes," have you furnished a copy of Form 990-AR (or equivalent report) to the Attorney General (or his/her designate) of each State as required by General Instruction K.1?	✓	
If "No," attach explanation.		
9 Are you claiming status as an operating foundation within the meaning of sections 4942(j)(3) or 4942(j)(6) for calendar year 1980 or fiscal year beginning in 1980 (see instructions for Part XII)?		✓
If "Yes," complete Part XII.		
10 Self-dealing (section 4941):		
(a) During the year did you (either directly or indirectly):		
(1) Engage in the sale or exchange or leasing of property with a disqualified person?		✓
(2) Borrow money from, lend money to, or otherwise extend credit to (or accept it from) a disqualified person?		✓
(3) Furnish goods, services, or facilities to (or accept them from) a disqualified person?		✓
(4) Pay compensation to or pay or reimburse the expenses of a disqualified person?		✓
(5) Transfer any of your income or assets to a disqualified person (or make any of either available for the benefit or use of a disqualified person)?		✓
(6) Agree to pay money or property to a government official? (Exception: check "No" if you agreed to make a grant to or to employ the official for a period after he or she terminates government service if he or she is terminating within 90 days.)		✓
(b) If you answered "Yes" to any of the questions 10(a)(1) through (6), were the acts you engaged in excepted acts as described in the instructions for this line?		✓
(c) Did you engage in a prior year in any of the acts described in 10(a), other than excepted acts, that were acts of self-dealing that were not corrected by the first day of your tax year beginning in 1980?		✓
11 Taxes on failure to distribute income (section 4942) (does not apply for years you were an operating foundation as defined in section 4942(j)(3) or 4942(j)(6)):		
(a) Did you at the end of tax year 1980 have any undistributed income (lines 6(b) and (c), Part VI) for tax year(s) beginning before 1980?		✓
If "Yes," list the years ▶		
(b) If "Yes," to (a) above, are you applying the provisions of section 4942(a)(2) (relating to incorrect valuation of assets) to the undistributed income for ALL such years?		✓
(c) If the provisions of section 4942(a)(2) are being applied to ANY of the years listed in (a) above, list the years here and see the instructions ▶		
12 Taxes on excess business holdings (section 4943):		
(a) Did you hold more than 2% direct or indirect interest in any business enterprise at any time during the year?		✓
(b) If "Yes," did you have excess business holdings in 1980 as a result of any purchase by you or disqualified persons after May 26, 1969; after the lapse of the 5-year period to dispose of holdings acquired by gift or bequest; or after the lapse of the 10-year first phase holding period?		✓
Note: You may use Schedule C, Form 4720 to determine if you had excess business holdings in 1980.		

Part V Statements Regarding Activities (continued)

13 Taxes on investments which jeopardize charitable purpose (section 4944):

- (a) Did you invest during the year any amount in a manner that would jeopardize the carrying out of any of your exempt purposes?
- (b) Did you make any investment in a prior year (but after December 31, 1969) that could jeopardize your charitable purpose that you had not removed from jeopardy on the first day of your tax year beginning in 1980?

14 Taxes on taxable expenditures (section 4945):

- (a) During the year did you pay, or incur any amount to:
- (1) Carry on propaganda, or otherwise attempt to influence legislation by attempting to affect the opinion of the general public or any segment thereof, or by communicating with any member or employee of a legislative body, or by communicating with any other government official or employee who may participate in the formulation of legislation?
- (2) Influence the outcome of any specific public election, or to carry on, directly or indirectly any voter registration drive?
- (3) Provide a grant to an individual for travel, study, or other similar purposes?
- (4) Provide a grant to an organization, other than a charitable, etc., organization described in paragraph (1), (2), or (3) of section 509(a)?
- (5) Provide for any purpose other than religious, charitable, scientific, literary, or educational purposes, or for the prevention of cruelty to children or animals?
- (b) If you answered "Yes" to any of questions (a)(1) through (a)(5), were all such transactions excepted transactions as described in the instructions? n/a
- (c) If you answered "Yes" to question 14(a)(4), do you claim exemption from the tax because you maintained expenditure responsibility for the grant (as explained in item (12) of the instructions for line 14)? n/a
If "Yes," attach the statement required.

Part V Statement Regarding Contributors, Compensation, etc.

1 Persons who became substantial contributors in 1980 (if more space is needed, attach schedule):

Name	Address
RAY A KAC	8935 YOUNG LG JONES DRIVE, SUITE 203 LG JONES CA 92037

2 Officers, directors, trustees, foundation managers and their compensation, if any, for 1980:

Name and address	Title, and time devoted to position	Contributions to employee benefit plans	Expense account, other allowances	Compensation
SCHEDULE 5				
Total				59655

3 Compensation of five highest paid employees for 1980 (other than included in 2 above—see instructions):

[illegible]

Total number of other employees paid over \$30,000 **None**

Part VI Statement Regarding Contributors, Compensation, etc. (continued)**4** Five highest paid persons for professional services for 1980 (see instructions):

Name and address of persons paid more than \$30,000	Type of service	Compensation

Total number of others receiving over \$30,000 for professional services ▶

Part VII Capital Gains and Losses for Tax on Investment Income

a. Kind of property. Indicate security, real estate, or other (specify)	b. Description (examples: 100 sh. of "Z" Co., 2 story brick, etc.)	c. How acquired P—Purchase D—Donation	d. Date acquired (mo., day, yr.)	e. Date sold (mo., day, yr.)
1 SCHEDULE 4				

f. Gross sales price minus expense of sale	g. Depreciation allowed (or allowable)	h. Cost or other basis	i. Gain or (loss) (f plus g minus h)

Complete only for assets showing gain in column i and owned by the foundation on 12/31/69

j. F.M.V. as of 12/31/69	k. Adjusted basis as of 12/31/69	l. Excess of col. j over col. k, if any	m. Losses (from col. i) Gains (excess of col. i gain over col. l, but not less than zero)

2 Capital gain net income or (net capital loss) . { If gain, also enter in Part I, line 8 }
If (loss) enter -0- in Part I, line 8

12400175

3 Net short-term capital gain (loss) as defined in section 1222(5) and (6)

If gain, also enter in Part I, column (C), line 9 (see instructions for line 9)
If loss, enter -0- in Part I, column (C), line 9

< 8,31 >

Part VIII Minimum Investment Return for 1980
 (Operating Foundations—See instructions)

1 Fair market value of assets not used (or held for use) directly in carrying out exempt purposes:	
(a) Average monthly fair market value of securities	47,513,933
(b) Average of monthly cash balances	32,399.00
(c) Fair market value of all other assets (see instructions)	57,490.00
(d) Total (add lines (a), (b), and (c))	47,895,403
2 Acquisition indebtedness applicable to line 1 assets	
3 Line 1(d) minus line 2	47,895,403
4 Cash deemed held for charitable activities—enter 1½% of line 3 (for greater amount, see instructions)	718,431
5 Line 3 minus line 4	47,176,972
6 Enter 5% of line 5	2,358,849

Part IX Computation of Distributable Amount for 1980
 (See instructions—not applicable to operating foundations)

1 Adjusted net income from Part I, line 25(c)		14,854,520
2 Minimum investment return from Part VIII, line 6		2,358,849
3 Enter the larger of line 1 or line 2		2,358,849
4 Total of:		
(a) Tax on investment income for 1980 from Part II, line 1	283,247	
(b) Income tax on unrelated business income for 1980 (Form 990-T)	-	283,247
5 Distributable amount (line 3 minus line 4)		20,756,022
6 Adjustments to distributable amount (see instructions)		
7 Distributable amount as adjusted (line 5 plus or minus line 6)—also enter in Part XI, line 1		20,756,022

Part X Qualifying Distributions in 1980
 (See instructions)

1 Amounts paid (including administrative expenses) to accomplish charitable purposes:	
(a) Expenses, contributions, gifts, etc.—total from Part I, column (D), line 24	66,7494
(b) Program-related investments (see instructions)	
2 Amounts paid to acquire assets used (or held for use) directly in carrying out charitable, etc., purposes	
3 Amounts set aside for specific projects which are for charitable purposes	
4 Total qualifying distributions made in 1980 (add lines 1, 2, and 3)—also enter in Part XI, line 4	66,7494

Part XI Computation of Undistributed Income (See instructions)

1 Distributable amount for 1980 from Part IX
2 Undistributed income, if any, as of the end of 1979:
 (a) Enter amount for 1979
 (b) Total for prior years:
3 Excess distributions carryover, if any, to 1980:

(a) From 1975	89-101
(b) From 1976	141,7484
(c) From 1977	22-7523
(d) From 1978	470,3121
(e) From 1979	4645092
(f) Total of 3(a) through (e)	

4 Qualifying distributions for 1980 (441799)

(a) Applied to 1979, but not more than line 2(a) .

(b) Applied to undistributed income of prior years (Election required)

(c) Treated as distributions out of corpus (Election required)

(d) Applied to 1980 distributable amount . . .

(e) Remaining amount distributed out of corpus

5 Excess distributions carryover applied to 1980 . . .
(If an amount appears in column (d), the same
amount must be shown in column (a))

6 Enter the net total of each column as indicated below:

- (a) **Corpus.** Add lines 3(f), 4(c), and 4(e). Subtract line 5
- (b) **Prior years undistributed income.** Line 2(b) minus line 4(b). This amount is taxable—File Form 4720
- (c) **Undistributed income for 1979.** Line 2(a) minus line 4(a). This amount is taxable—File Form 4720
- (d) **Undistributed income for 1980.** Line 1 minus lines 4(d) and 5. This amount must be distributed in 1981

7 Amounts treated as distributions out of corpus to satisfy requirements imposed by sections 170(b)(1)(D) or 4942(g)(3) (see instructions)


8 Excess distributions carryover from 1975 not applied on line 5 or line 7 (see instructions).

9 Excess distributions carryover to 1981. (Line 6(a) minus lines 7 and 8.)

10 Analysis of line 9:	
(a) Excess from 1976 . . .	1419484
(b) Excess from 1977 . . .	2207523
(c) Excess from 1978 . . .	4703121
(d) Excess from 1979 . . .	4645092
(e) Excess from 1980 . . .	4541892

Part XII Private Operating Foundations
(See instructions and Part V, Question 9)

2/9

- 1 (a) If the foundation has received a ruling or determination letter that it is an operating foundation, and the ruling is effective for 1980, enter the date of the ruling 
- (b) Check box to indicate whether you are an operating foundation described in section ☐ 4942(j)(3) or ☐ 4942(j)(6) (see instructions).

- 2 (a) Adjusted net income (from Part I, line 25(c) for 1980. Enter corresponding amount for prior years)**

- (b) 85% of line (a)

- (c) Qualifying distributions from Part X, line 4 for 1980 (enter corresponding amount for prior years) .**

- (d) Amounts included in (c) not used directly for active conduct of exempt activities.

- (e) Qualifying distributions made directly for active conduct of exempt purposes (line (c) minus line (d)) .**

- 3 Complete the alternative test in (a), (b), or (c) on which the organization relies:**

- (a) "Assets" alternative test—enter:**

- (1) Value of all assets

- (2) Value of assets qualifying under section 4942(j)(3)(B)(i) .**

- (b) "Endowment" alternative test—**

- Enter $\frac{3}{4}$ of minimum investment return shown in Part VIII, line 6 for 1980 (enter $\frac{3}{4}$ of comparable amount for prior years)**

- (c) "Support" alternative test—enter:

- (1) Total support other than gross investment income (interest, dividends, rents, payments on securities loans (section 512(a)(5)), or royalties)

- (2) Support from general public and 5 or more exempt organizations as provided in section 4942(i)(3)(B)(iii)

- (3) Largest amount of support from an exempt organization (see instructions)

- (4) Gross investment income . . .**

[illegible]

NAME THE KROC FOUNDATIONIDENTIFICATION NO. 36-6125251STATEMENT NO. 1YEAR ENDED 1980

STATEMENT REGARDING AMENDED RETURN:

THIS RETURN IS BEING AMENDED TO DELETE NON-
INVESTMENT TYPE INCOME FROM PAGE 1, LINE 12,
COL. B. TAX HAD PREVIOUSLY BEEN COMPUTED AND PAID
ON THIS AMOUNT. THERE ARE NO OTHER CHANGES
TO THE RETURN.

REVENUE FROM FILMS & BOOKS

< 232,313 >

DELETED FROM
Pg 1 Line 12 Col. 6

CHANGE IN TAX - Pg 1 PART II LINE 1

REDUCE TAX BY $2\% \times 132,153$

< 2,643 >