



CENTER FOR
CRIMINAL JUSTICE RESEARCH

PART OF THE INDIANA UNIVERSITY PUBLIC POLICY INSTITUTE

IMPD Uniform Crime Reports Violent Crimes Crimes in Indianapolis, 2001-2008: Report to Indiana Project Safe Neighborhoods



IMPD Uniform Crime Reports Violent Crimes in Indianapolis 2001 to 2008: Report to Indiana Project Safe Neighborhoods

**© 2009 Center for Criminal Justice Research (09-C40)
School of Public and Environmental Affairs
Indiana University–Purdue University Indianapolis
334 North Senate Avenue, Suite 300
Indianapolis, Indiana 46204-1708**





The Center for Criminal Justice Research

The Center for Criminal Justice Research is one of three applied research centers currently affiliated with the Indiana University Public Policy Institute. The mission of the Center for Criminal Justice Research is to collaborate with federal, state, and local government and law enforcement agencies, and public and private social service organizations involved in criminal justice and public safety program development, delivery, and evaluation. The Center for Criminal Justice Research has established working partnerships through a variety of projects with government and foundation support.

Indiana University Public Policy Institute

The Indiana University (IU) Public Policy Institute is a collaborative, multidisciplinary research institute within the IU School of Public and Environmental Affairs (SPEA). Established in the spring of 2008, the Institute serves as an umbrella organization for research centers affiliated with SPEA, including the Center for Urban Policy and the Environment, the Center for Health Policy, and the Center for Criminal Justice Research. The Institute also supports the Office of International Community Development and the Indiana Advisory Commission on Intergovernmental Relations (IACIR).



Table of Contents

Introduction and Overview	1
Violent Crime Trends	3
Aggravated Assault Trends	6
Armed Robbery Trends	9
Maps of Violent Crimes	11

Authors

Thomas Stucky
Associate Professor, School of
Public and Environmental Affairs

Samuel Nunn
Director, Center for
Criminal Justice Research
Professor, School of Public and
Environmental Affairs

Kenna Quinet
Associate Professor, School of
Public and Environmental Affairs

William Newby
Program Analyst

Tables:	PAGE
Table 1: IMPD UCR violent crime totals 2001-2008, and percent change from previous year	3
Table 2: IMPD UCR reported aggravated assault with a gun annual totals and percent change, 2001-2008	6
Table 3: Aggravated assault and armed robbery counts and percent, 2001 to 2008	6
Table 4: Aggravated assaults by type from 2001 to 2008	7
Table 5: Monthly counts of UCR reported aggravated assaults/gun, 2001 to 2008	8
Table 6: Monthly UCR armed robbery counts, 2001 to 2008	9

Figures:

Figure 1: Percentage of UCR violent crimes reported from 2001 to 2008 crime type	3
Figure 2: Percentage of total UCR violent crimes by type of crime and year	4
Figure 3: Average percentage of 24 hour total for each crime, 2001-2008	5
Figure 4: Aggravated assaults by type, 2001 to 2008	7
Figure 5: Monthly UCR aggravated assaults/gun, 2001-2008	8
Figure 6: Monthly UCR armed robberies, 2001-2008	9

Maps:

Map 1: Percent of total violent crimes by ZIP code, Marion County, IN 2001-2008	12
Map 2: Percent of armed robberies by beat, Marion County, IN 2001-2008	13
Map 3: Average annual percent change in yearly beat proportion of armed robberies, Marion County, IN 2001-2006	14
Map 4: Percent of total armed robberies, Marion County, IN 2007	15
Map 5: Percent of total armed robberies, Marion County, IN 2008	16
Map 6: Percent of total aggravated assaults with a gun by beat, Marion County, IN 2001-2008	17
Map 7: Average annual percent change in yearly beat proportion of total aggravated assaults with a gun, Marion County, IN 2001-2006	18
Map 8: Percent of total aggravated assaults with a gun, Marion County, IN 2007	19
Map 9: Percent of total aggravated assaults with a gun by beat, Marion County, IN 2008	20





INTRODUCTION AND OVERVIEW

In January 2008, the IUPUI Center for Criminal Justice Research (CCJR) entered into a contract with the Indiana Criminal Justice Institute to serve as local research partner for Indiana Project Safe Neighborhoods (PSN), U.S. Attorney's Office, Southern District of Indiana. This report provides an overview of selected violent crime metrics for the geographical area generally encompassing the Indianapolis Metropolitan Police Department (IMPD) service district. Based on statistical data obtained from the IMPD, the report provides mostly descriptive information about violent crimes in Indianapolis from 2001 through 2008, focusing on homicides, aggravated assaults, and armed robberies reported through the FBI's Uniform Crime Reporting (UCR) program.

The statistical presentation is in two broad parts. The first section provides information on violent crime trends, trends in specific gun crimes such as aggravated assaults with a firearm, and characteristics of violent crimes such as the most frequent time of day each crime is reported. The second section presents a series of maps on the distribution of violent crimes by district, IMPD beat, and ZIP code.

Data for this report were obtained from a download of crimes reported by the IMPD to the UCR program from January 1, 2001 through December 31, 2008. The reports were then converted into a SQL data base consisting of individual reported crimes. Records were filtered for violent crimes by type and geocoded by ZIP code, district, and beat. Individual records were then aggregated to the totals shown in the following figures, graphs and maps. Please note that nearly all exhibits include explanatory notes that help qualify and describe the data presented in tables and figures.

It is also important to note that the 2007 Indianapolis Police Department merger with the Marion County Sheriff's Department entailed a more than doubling of the population served and the land area covered by the merged IMPD. Therefore, large increases in raw counts of violent crimes are to be expected from 2006 to 2007 and are not indicative of a major increase in violent crime in Marion County. For this reason year to year comparisons are not made from 2006 to 2007 in the analyses that follow.





VIOLENT CRIME TRENDS

Table 1: IMPD UCR violent crime totals 2001-2008, and percent change from previous year

Year	Reported UCR Violent Crimes	Percent change from prior year
2001	13,811	—
2002	13,470	-2.5%
2003	13,060	-3.0%
2004	13,547	3.7%
2005	14,750	8.9%
2006	14,231	-3.5%
2007	25,727	—
2008	24,463	-4.9%

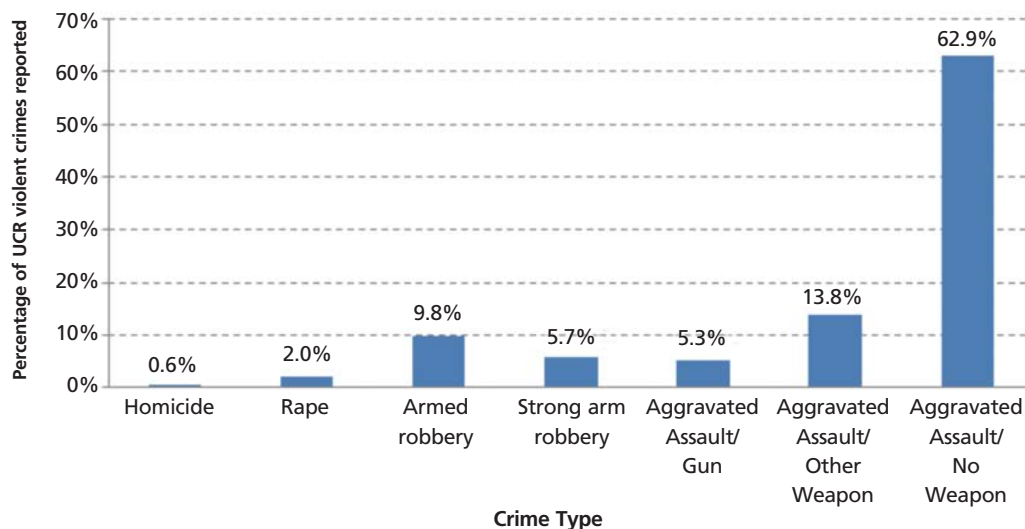
Notes:

1. Source: IMPD Uniform Crime Reporting Office, Crime Analysis Section, IMPD.
2. Violent crime counts include homicide, rape, robbery, and aggravated assaults.
3. Percentage change was not calculated for 2001 because prior year data are not listed.
4. Percentage change was not calculated for 2007 because of the IPD and MCSO merger.

Key points:

1. Violent crimes declined slightly in 2002 (2.5 percent) and 2003 (3.0 percent), and then increased slightly in 2004 (3.7 percent).
2. In 2005 serious violent crime increased by 8.9 percent.
3. In 2006 serious violent crime then declined slightly (3.5 percent).
4. The substantial increase from 2006 to 2007 is mainly due to the increase in the service area following the merger.
5. Violent crime declined somewhat from 2007 to 2008 (4.9 percent).

Figure 1: Percentage of UCR violent crimes reported from 2001 to 2008 by crime type



Notes:

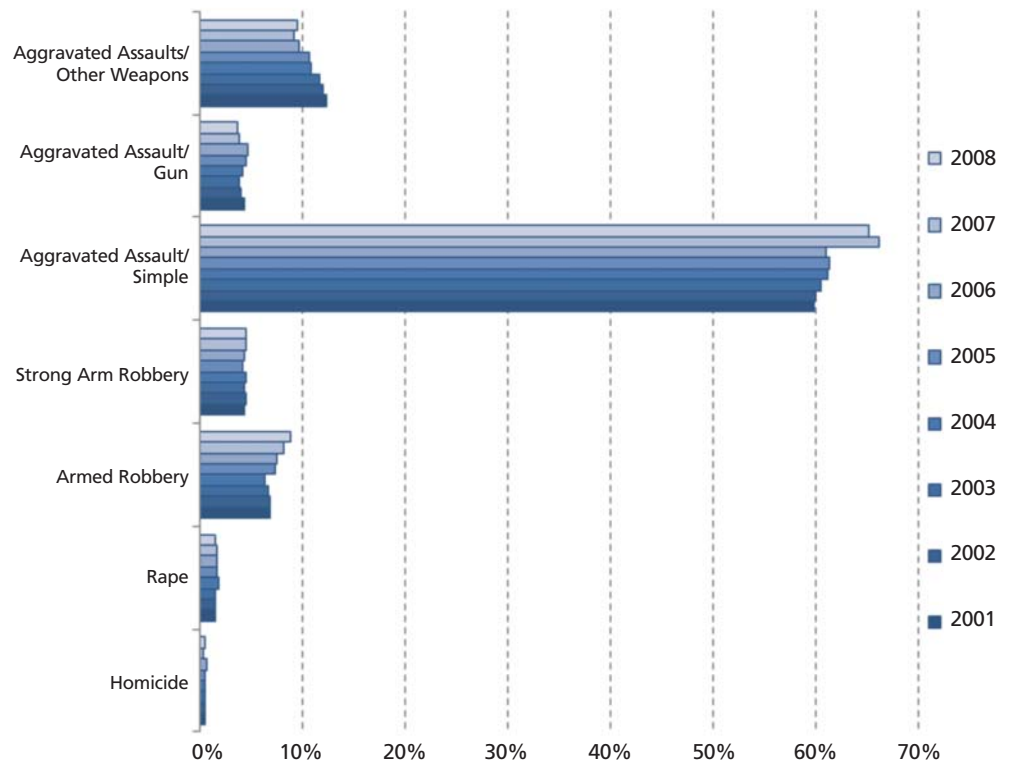
1. Source: IMPD Uniform Crime Reporting Office, Crime Analysis Section, IMPD.
2. Values graphed are the percentages of the total crime counts from 2001 to 2008 for each crime type.
3. UCR Violent crimes include homicide, rape, robbery, and aggravated assaults.
4. Other weapons include knives, blunt objects, and other weapons.

Key points:

1. Homicide (0.6 percent) and rape (2.0 percent) are the least common crimes for the period.
2. Armed robberies are more common (9.8 percent) than strong arm robberies (5.7 percent).
3. Aggravated assault with a gun is the least common type of aggravated assault (5.3 percent).
4. More than twice as many aggravated assaults with another weapon (13.8 percent) were reported than aggravated assaults with a gun (5.3 percent).
5. By far the most common serious violent crime in Indianapolis during the reporting period is aggravated assaults with no weapon used (62.9 percent), outnumbering all other UCR reported violent crimes combined (37.1 percent).



Figure 2: Percentage of total UCR violent crimes by type of crime and year



Notes:

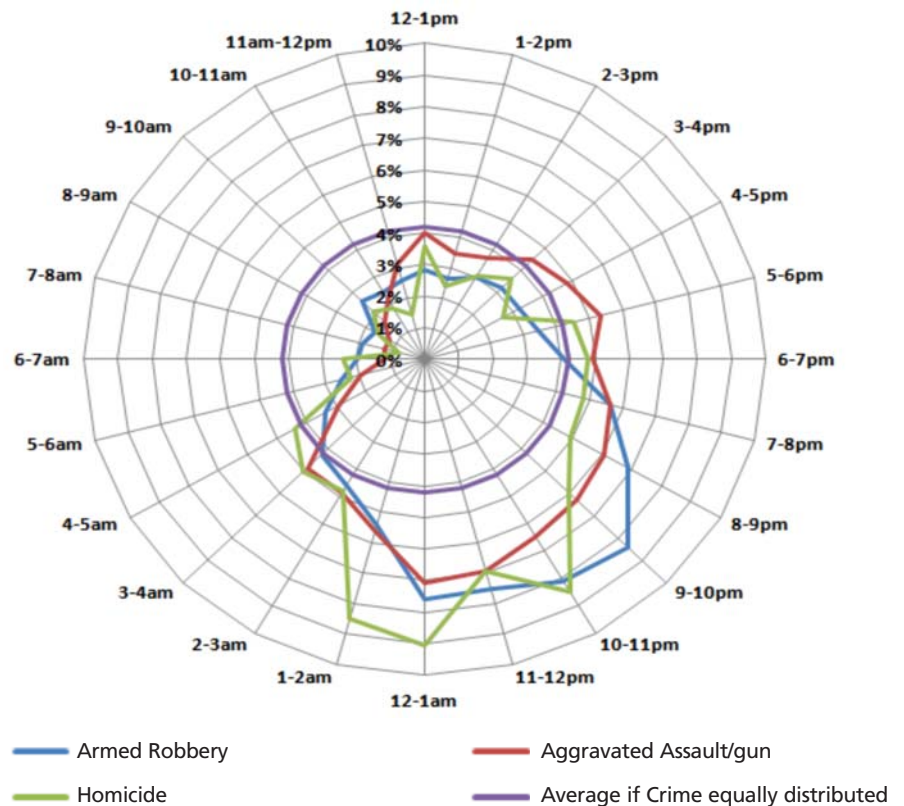
1. Source: IMPD Uniform Crime Reporting Office, Crime Analysis Section, IMPD.
2. Other weapons include knives, blunt objects, and other weapons.

Key points:

1. Changes in crime vary by category from year to year but generally follow similar patterns across violent crime types.
2. Aggravated assaults accounted for the majority of all UCR violent crimes in each year, with homicides being the least frequent crime.
3. Aggravated assaults with a gun and other weapons generally declined as a percentage of all violent crime from 2001 to 2008.
4. Most violent crimes do not involve a weapon, although armed robberies are more common than strong armed robberies.



Figure 3: Average percentage of 24 hour total for each crime, 2001-2008



Notes:

1. Source: IMPD Uniform Crime Reporting Office, Crime Analysis Section, IMPD.
2. Values are hourly percentages of the 24 hour total by crime, 2001 - 2008.
3. Armed robberies include all types of weapons.
4. As crime percentages increase the line moves toward the outer part of the circle.
5. The purple circle represents the value if crimes were equally likely to happen anytime.

Key points:

1. Each crime is more prevalent in the evening hours, although peak times vary by crime.
2. Homicides occur most frequently between 6:00 pm and 2:00 am, but are especially frequent between 10:00 pm and 2:00 am.
3. Armed robberies increase substantially from 7 :00 pm to 10:00 pm and remain high until 1:00 am, declining rapidly overnight.
4. Aggravated assault with a gun occurs most frequently between 7:00 pm and 1:00 am, and are more evenly distributed throughout the day than armed robberies or homicides.
5. The peak times for homicides and aggravated assaults with a gun are several hours later than for armed robberies.



AGGRAVATED ASSAULT TRENDS

Table 2: IMPD UCR reported aggravated assault with a gun annual totals and percent change, 2001 - 2008

Year	Aggravated assault/ gun	Percent change from prior year
2001	800	—
2002	734	-8.3%
2003	672	-8.4%
2004	743	9.6%
2005	873	17.5%
2006	884	1.3%
2007	1,229	—
2008	1,096	-10.8%

Notes:

1. Source: IMPD Uniform Crime Reporting Office, Crime Analysis Section, IMPD.
2. Counts are reported aggravated assaults with a gun reported during the calendar year.
3. IPD and MCSD merged in 2007 which accounts for much of the increase reported from 2006 to 2007.
4. Percentage change from the prior year was not calculated for 2001 because prior year data are not listed.
5. Percentage change from the prior year was not calculated for 2007 because of the IPD and MCSD merger.

Key points:

1. Aggravated assault with a gun declined somewhat from 2001 to 2003 (8.3 and 8.4 percent, respectively) and then increased substantially in 2004 (9.6 percent) and 2005 (17.5 percent).
2. From 2005 to 2006 aggravated assault with a gun increased slightly (1.3 percent).
3. From 2007 to 2008 aggravated assault with a gun decreased by 133 (10.8 percent) the largest annual decrease during the period.

Table 3: Aggravated assault and armed robbery counts and percent, 2001 to 2008.

Year	Armed robberies		Aggravated assault/gun	
	Total	As percent of all violent crime	Total	As percent of all violent crime
2001	1,287	9.3%	800	5.8%
2002	1,261	9.4%	734	5.5%
2003	1,188	9.1%	672	5.2%
2004	1,144	8.4%	743	5.5%
2005	1,441	9.8%	873	5.9%
2006	1,419	10.0%	884	6.2%
2007	2,612	10.2%	1,229	4.8%
2008	2,657	10.9%	1,096	4.5%

Notes:

1. Source: IMPD Uniform Crime Reporting Office, Crime Analysis Section, IMPD.
2. Armed robberies include all types of weapons.
3. Violent crime totals include homicide, rape, robbery of all types, and aggravated assaults of all types.
4. IPD and MCSD merged in 2007 which accounts for much of the increase from 2006 to 2007.

Key points:

1. Armed robberies averaged 9.6 percent of all serious violent crimes from 2001 to 2008 (8.4 to 10.9 percent).
2. Aggravated assault with a gun averaged approximately 5.4 percent of all serious violent crimes from 2001 to 2008 (4.5 to 6.2 percent).
3. Armed robberies declined as a percentage of all serious violent crimes from 2001 through 2004, and then increased slightly each year from 2005 to 2008.
4. Aggravated assault with a gun declined as a percentage of all serious violent crimes from 2001 to 2003 and then increased from 2004 to 2006, then declined again in 2007 and 2008.



Table 4: Aggravated assaults by type from 2001 to 2008.

Year	Aggravated assault/ gun		Aggravated assault/ other weapon		Aggravated assault/ no weapon	
	Total	As percent of all aggravated assaults	Total	As percent of all aggravated assaults	Total	As percent of all aggravated assaults
2001	800	7.1%	2,329	20.5%	8,213	72.4%
2002	734	6.6%	2,209	20.0%	8,118	73.4%
2003	672	6.2%	2,084	19.3%	8,016	74.4%
2004	743	6.6%	1,981	17.7%	8,464	75.7%
2005	873	7.2%	2,084	17.2%	9,136	75.5%
2006	884	7.6%	1,839	15.9%	8,859	76.5%
2007	1,229	5.8%	2,901	13.8%	16,168	76.6%
2008	1,096	5.5%	2,907	14.8%	15,861	79.8%

Notes

1. Source: IMPD Uniform Crime Reporting Office, Crime Analysis Section, IMPD.
2. Other weapons include knives, blunt objects, and other weapons.
3. Total includes aggravated assaults of all types.
4. IPD and MCSD merged in 2007 which accounts for much of the increase from 2006 to 2007.

Key points

1. Overall fewer aggravated assaults involved a weapon from 2001 to 2008, as the percentage of aggravated assault with no weapon increased throughout the period. In 2008 nearly four out of five aggravated assaults did not involve a weapon.
2. Aggravated assault with a gun averaged approximately 6.6 percent of all aggravated assaults from 2001 to 2008.
3. Aggravated assault with other weapons averaged approximately 17.4 percent of all aggravated assaults from 2001 to 2008.
4. Aggravated assault with no weapon averaged approximately 75.5 percent of all aggravated assaults from 2001 to 2008.
5. Aggravated assaults were less likely to involve a gun from 2001 to 2003, and then increased as a percentage of all aggravated assaults from 2004 through 2006, and declined as a percentage of aggravated assaults again in 2007 and 2008.

Figure 4: Aggravated assaults by type, 2001 to 2008

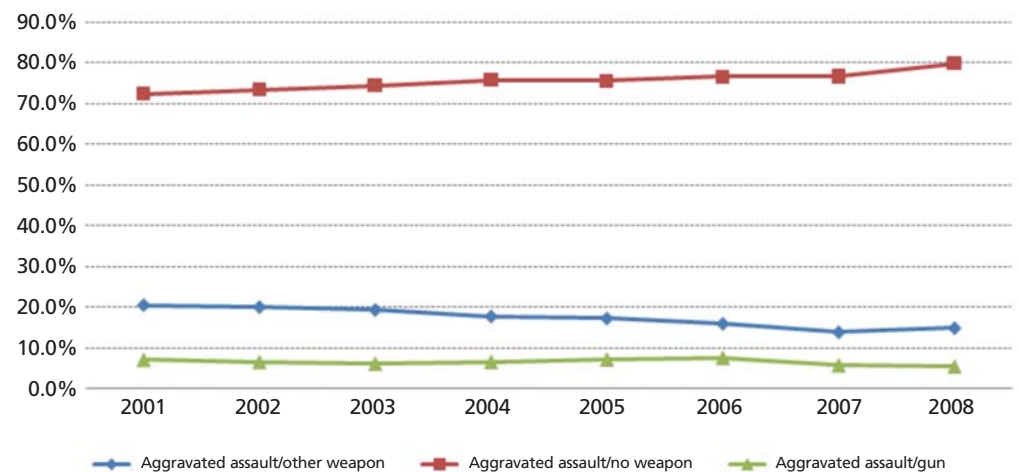
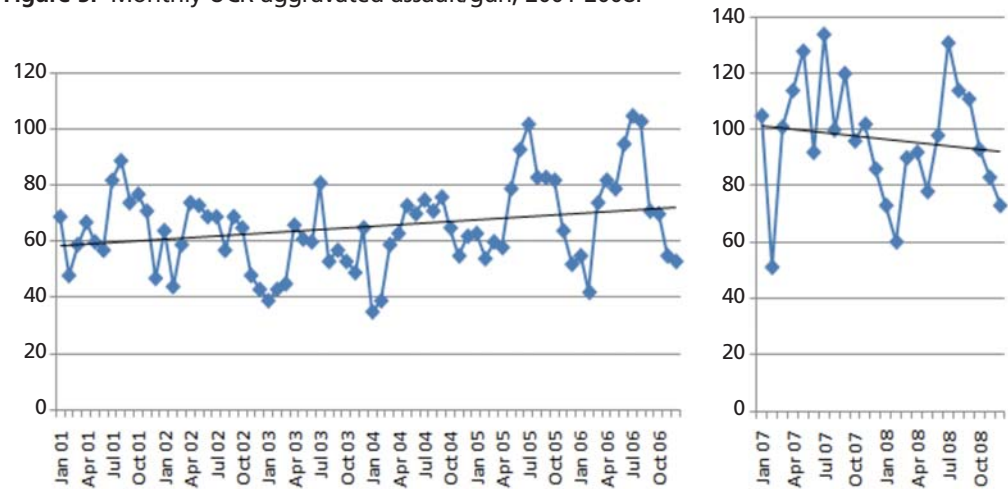




Figure 5: Monthly UCR aggravated assault/gun, 2001-2008.



Notes:

1. Source: IMPD Uniform Crime Reporting Office, Crime Analysis Section, IMPD.
2. IPD and MCSD merged in 2007.

Key points:

1. Aggravated assaults generally increased somewhat from 2001 to 2006.
2. There are large seasonal fluctuations in the number of reported aggravated assaults with a gun.
3. Aggravated assault with a gun is more common in the summer than in the winter.

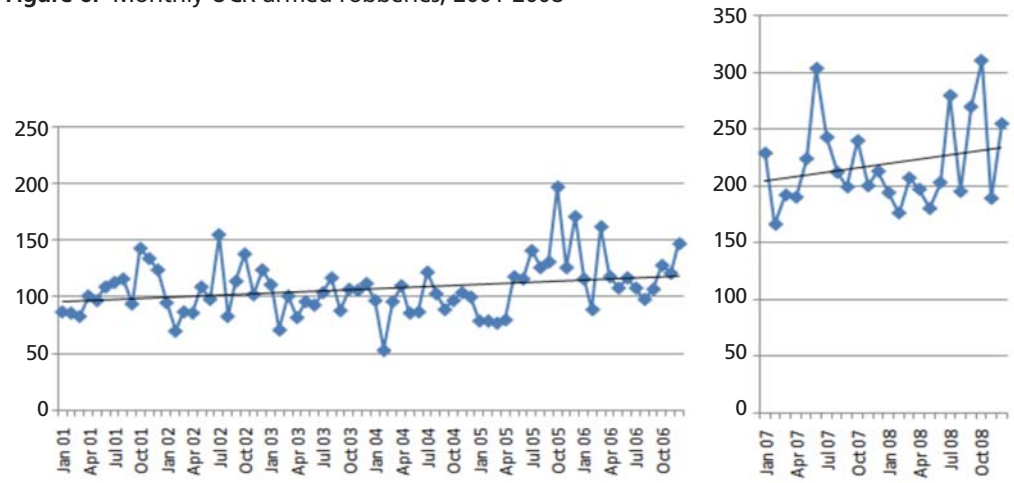
Table 5: Monthly counts of UCR reported aggravated assault/gun, 2001 to 2008

	2001	2002	2003	2004	2005	2006	2007	2008
January	69	64	39	35	63	55	105	73
February	48	44	43	39	54	42	51	60
March	59	59	45	59	60	74	101	90
April	67	74	66	63	58	82	114	92
May	60	73	61	73	79	79	128	78
June	57	69	60	70	93	95	92	98
July	82	69	81	75	102	105	134	131
August	89	57	53	71	83	103	100	114
September	74	69	57	76	83	71	120	111
October	77	65	53	65	82	70	96	93
November	71	48	49	55	64	55	102	83
December	47	43	65	62	52	53	86	73



ARMed ROBBERY TRENDS

Figure 6: Monthly UCR armed robberies, 2001-2008



Notes:

1. Source: IMPD Uniform Crime Reporting Office, Crime Analysis Section, IMPD.
2. IPD and MCSD merged in 2007.
3. Armed robberies can include all types of weapons.

Key points:

1. Armed robberies generally increased throughout the entire period.
2. There are large fluctuations in the number of reported armed robberies.
3. Armed robberies are more common in the summer than in the winter.

Table 6: Monthly UCR armed robbery counts, 2001 to 2008

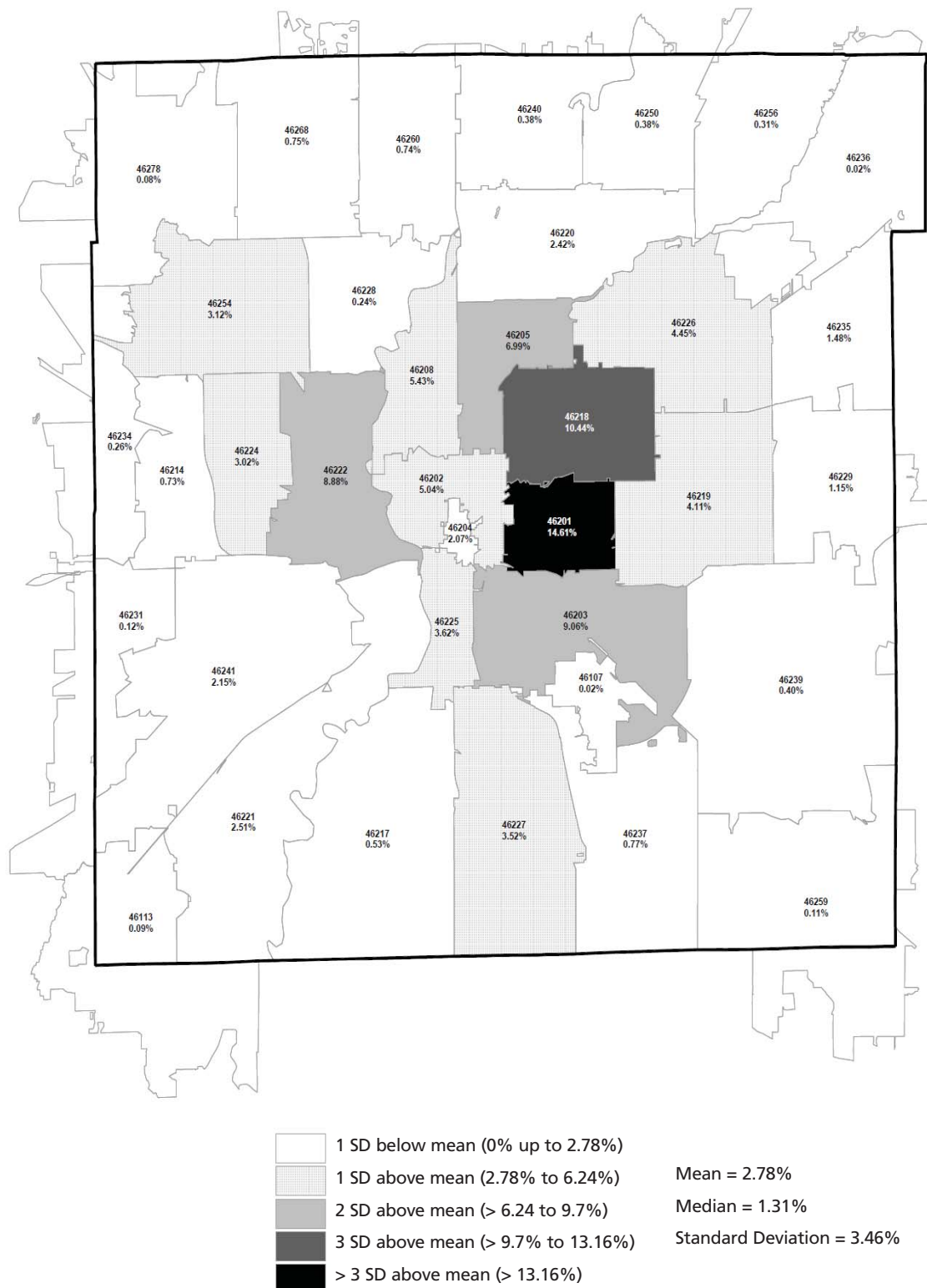
	2001	2002	2003	2004	2005	2006	2007	2008
January	87	95	111	97	79	116	229	194
February	86	70	71	53	79	89	166	176
March	83	87	101	96	77	162	192	207
April	101	86	82	110	80	118	190	197
May	97	109	96	86	118	108	224	180
June	109	98	93	87	116	117	304	203
July	113	155	104	122	141	108	243	280
August	116	83	117	103	126	98	212	195
September	94	114	88	89	131	107	199	270
October	143	138	107	97	197	128	240	311
November	134	102	106	104	126	121	200	189
December	124	124	112	100	171	147	213	255





MAPS OF VIOLENT CRIMES

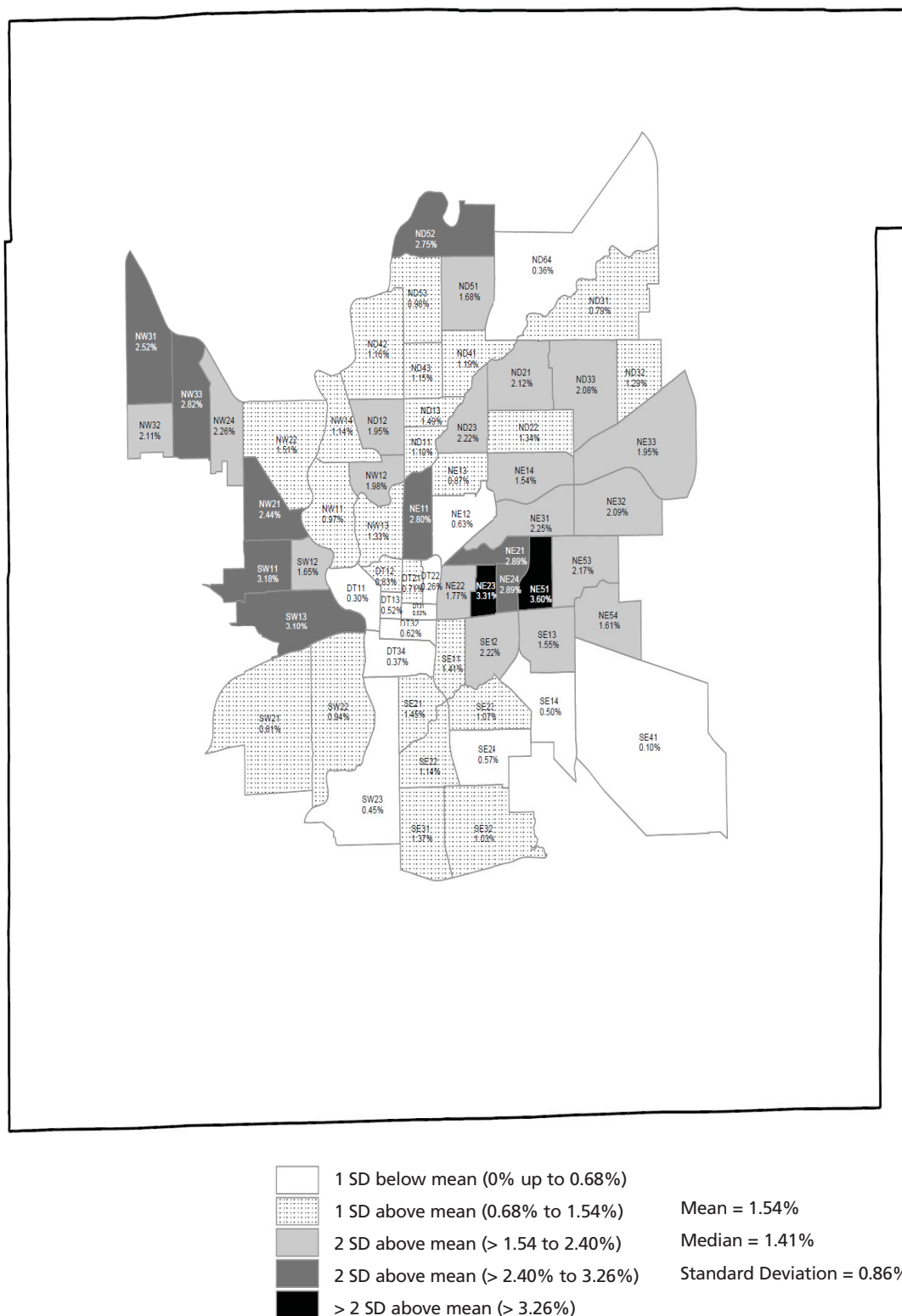
Map 1: Percent of total violent crimes by ZIP code, Marion County, IN 2001-2008



Source: Indianapolis Metropolitan Police Department UCR data.

Notes: Percent = Number of violent crimes occurring in ZIP code from 2001-08 / Number of violent crimes occurring in all ZIP codes 2001-08 x 100.

Map 2: Percent of armed robberies by beat, Marion County, IN 2001-2008

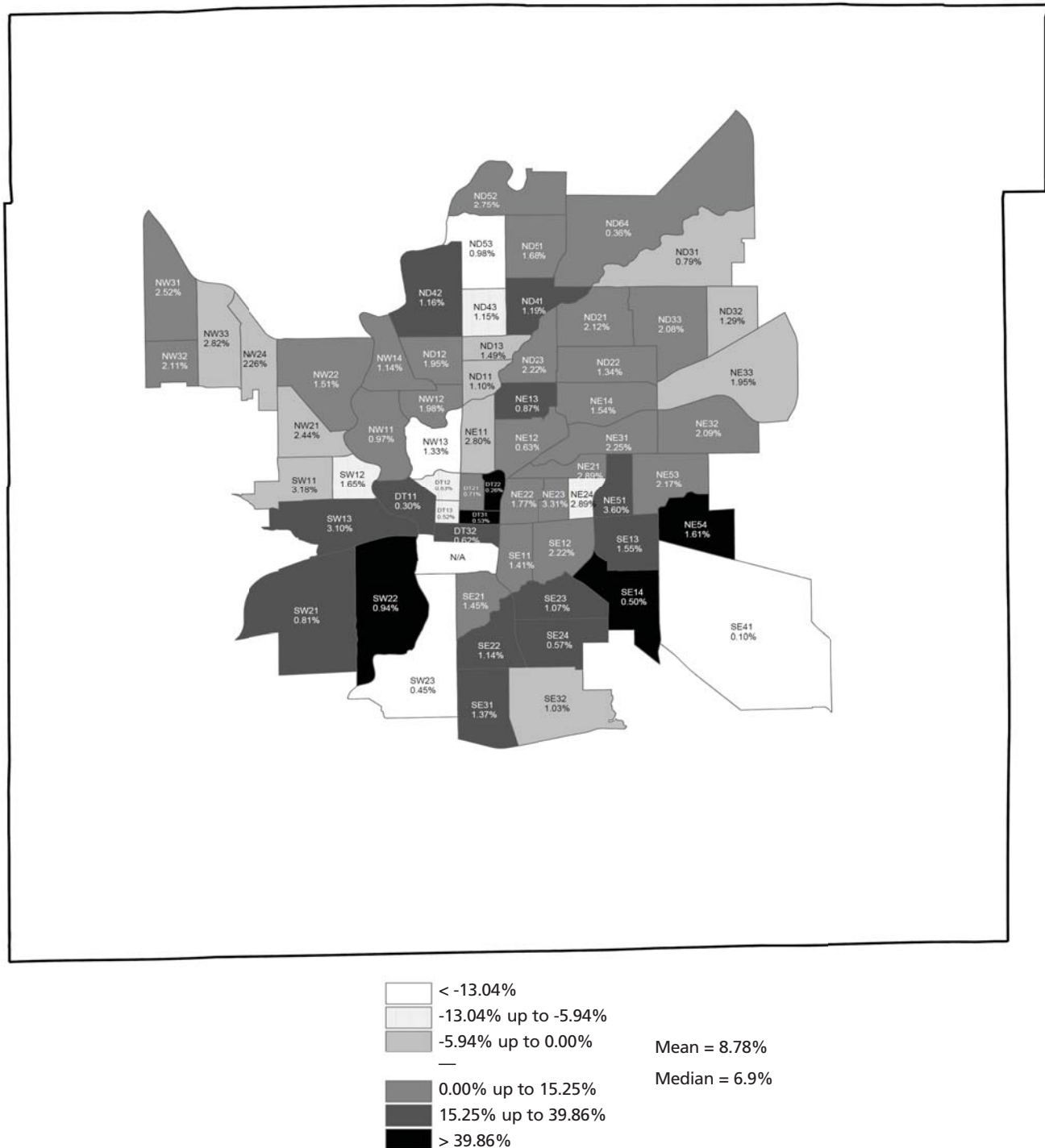


Source: Indianapolis Metropolitan Police Department UCR data.

Notes: Data are for beats prior to 2007 merger.

Percent = Number of gun-related armed robberies occurring in beat from 2001-06 / Number of gun-related armed robberies occurring in all beats from 2001-06 x 100.

Map 3: Average annual percent change in yearly beat proportion of armed robberies, Marion County, IN 2001-2006



Source: Indianapolis Metropolitan Police Department UCR data.

Notes: Data are for beats prior to 2007 merger.

Beats marked with N/A are excluded from the theme because no incidents occurred in those beats in at least one of the years from 2001-06 making it impossible to calculate an average annual change.

Classes were created using the natural breaks method. The method was applied separately for positive and negative changes to identify three natural breaks in the positive and negative values.

Percent = Average yearly percent change in beat percent of total, 2001-06 (i.e. $[(\text{beat count 2002}/\text{total count 2002}) - (\text{beat count 2001}/\text{total count 2001})] / [(\text{beat count 2001}/\text{total count 2001})]$, repeated for each year).

Map 4: Percent of total armed robberies, Marion County, IN 2007



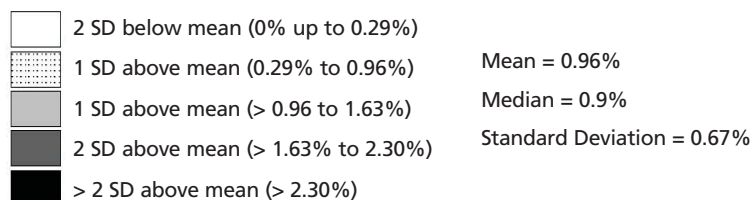
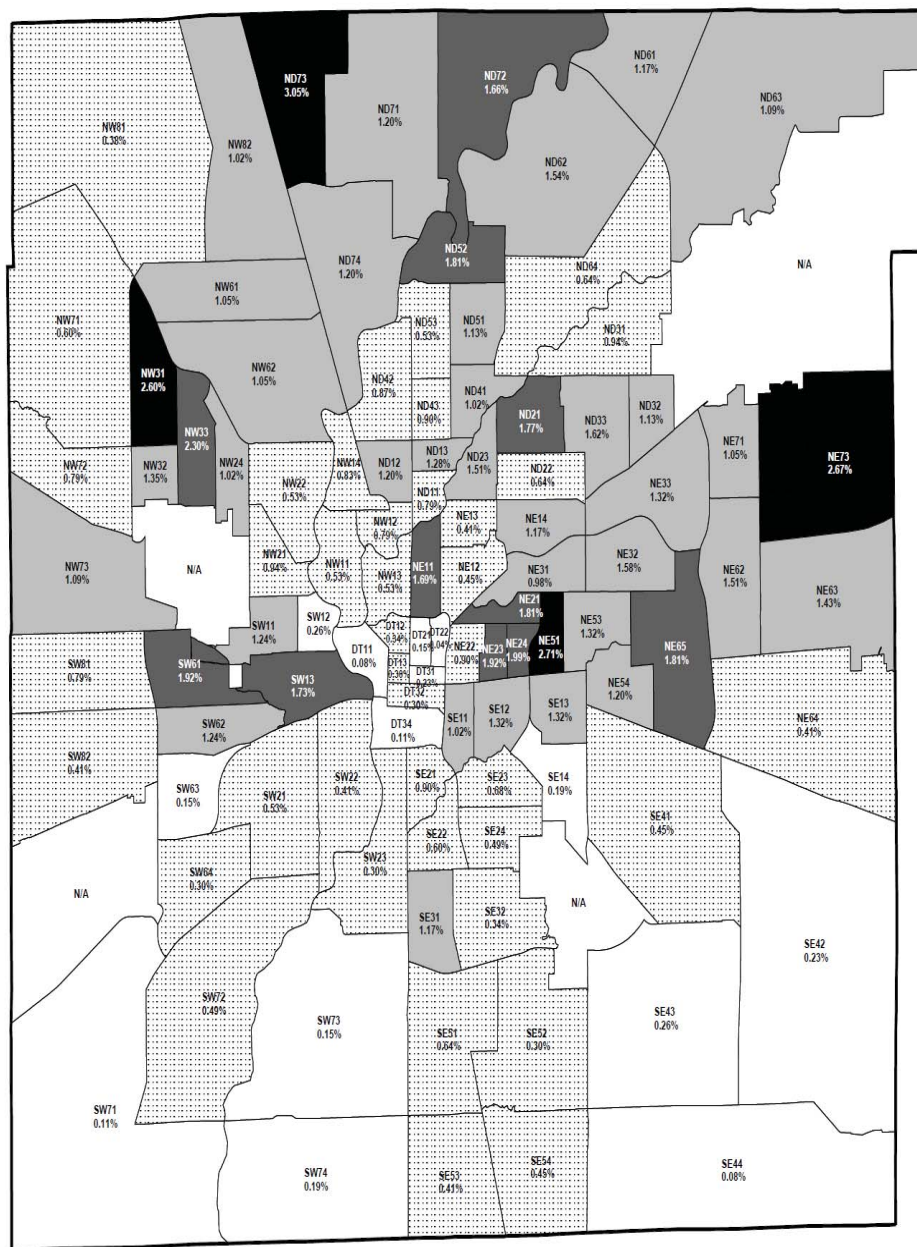
Source: Indianapolis Metropolitan Police Department UCR data.

Notes: Excludes records with no beat values.

Beats marked with N/A are separate jurisdictions not covered by IMPD.

Percent = number of armed robberies occurring in beat / total number of armed robberies in all beats x 100.

Map 5: Percent of total armed robberies, Marion County, IN 2008



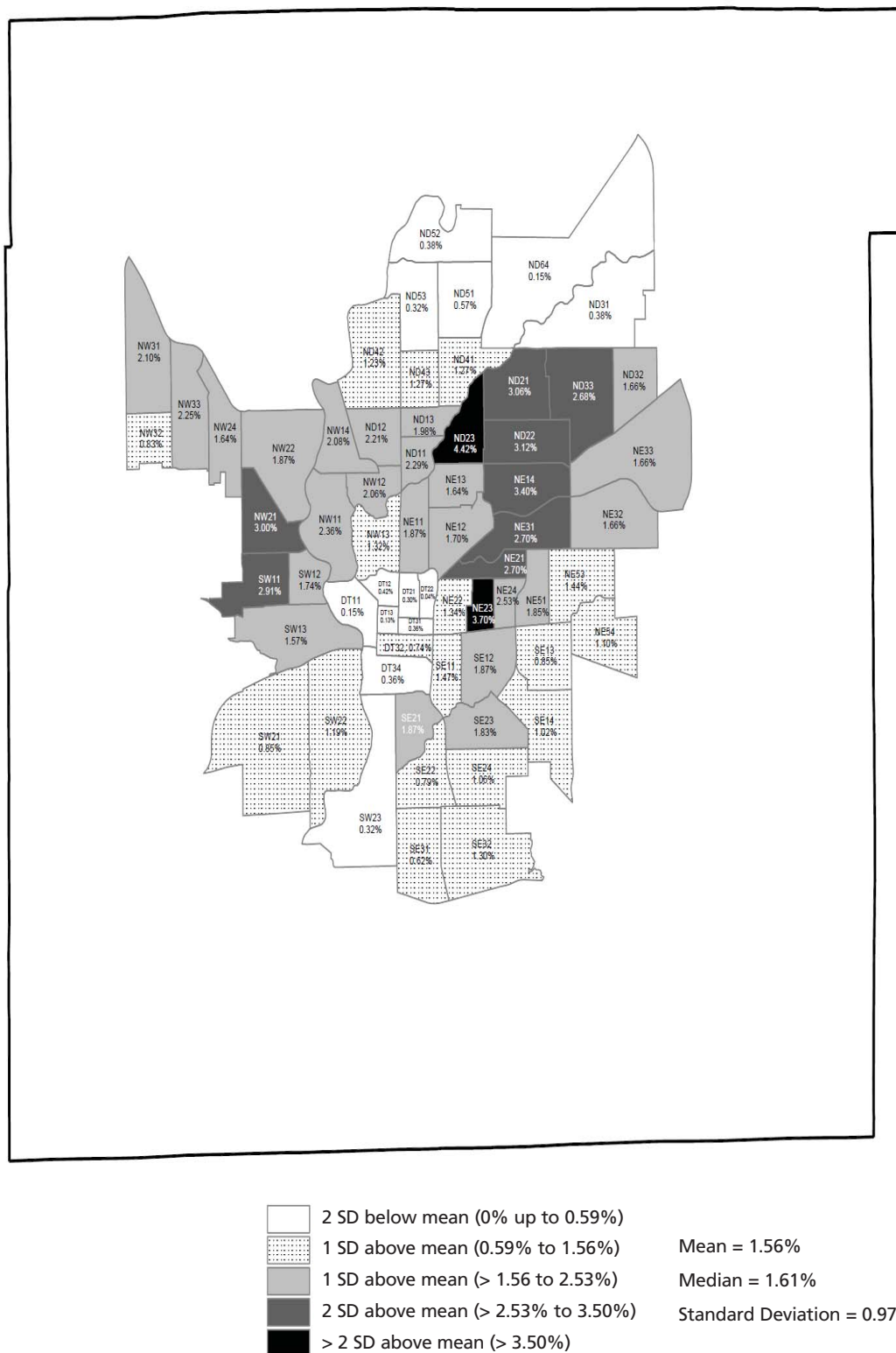
Source: Indianapolis Metropolitan Police Department UCR data.

Notes: Excludes records with no beat values.

Beats marked with N/A are separate jurisdictions not covered by IMPD.

Percent = number of armed robberies occurring in beat / total number of armed robberies in all beats x 100.

Map 6: Percent of total aggravated assaults with a gun by beat, Marion County, IN, 2001-2008

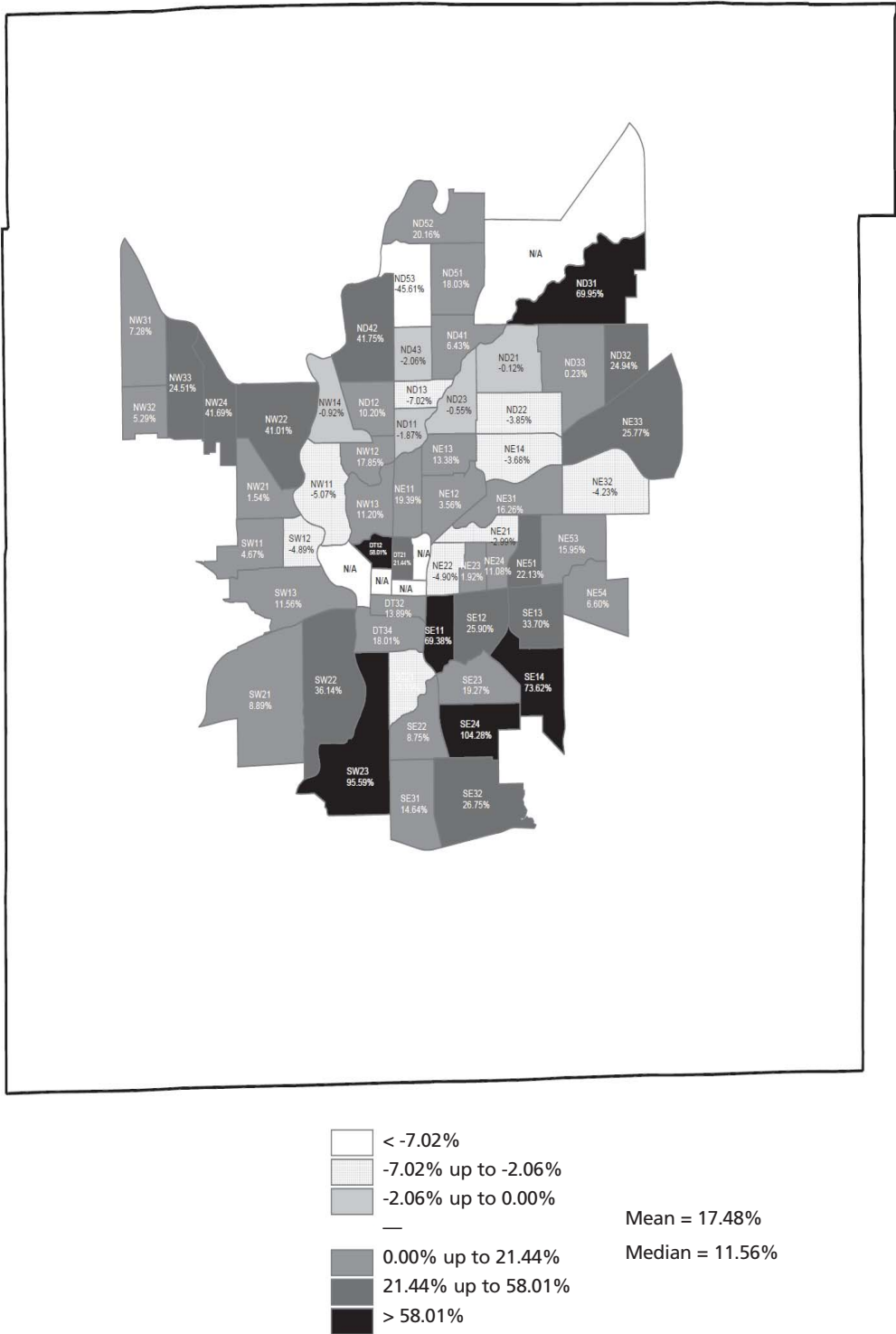


Source: Indianapolis Metropolitan Police Department UCR data.

Notes: Data are for beats prior to 2007 merger.

Percent = Number of gun-related aggravated assaults occurring in beat from 2001-06 / Number of gun-related aggravated assaults occurring in all beats from 2001-06 x 100.

Map 7: Average annual percent change in yearly beat proportion of total aggravated assaults with a gun, Marion County, IN 2001-2006



Source: Indianapolis Metropolitan Police Department UCR data.

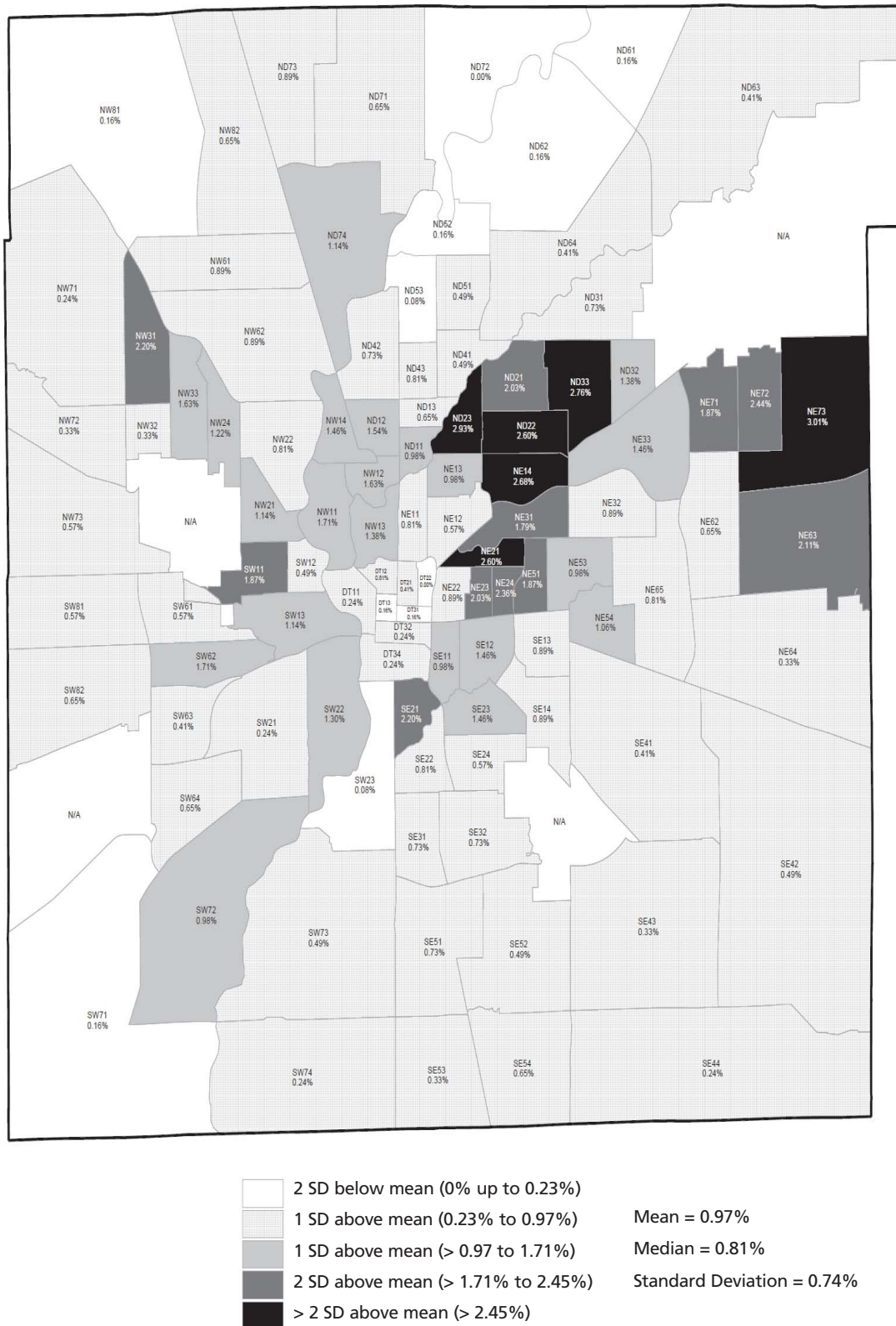
Notes: Data are for beats prior to 2007 merger.

Beats marked with N/A are excluded from the theme because no incidents occurred in those beats in at least one of the years from 2001-06 making it impossible to calculate an average annual change.

Classes were created using the natural breaks method. The method was applied separately for positive and negative changes to identify three natural breaks in the positive and negative values.

Percent = Average yearly percent change in beat percent of total, 2001-06 (i.e., [(beat count 2002/total count 2002) - (beat count 2001/total count 2001)] / [(beat count 2001/total count 2001)], repeated for each year).

Map 8: Percent of total aggravated assaults with a gun, Marion County, IN 2007



Source: Indianapolis Metropolitan Police Department UCR data.

Notes: Excludes records with no beat values.

Beats marked with N/A are separate jurisdictions not covered by IMPD.

Percent = number of gun-related aggravated assaults occurring in beat / total number of aggravated assaults in all beats x 100.

Map 9: Percent of total aggravated assaults with a gun by beat, Marion County, IN, 2008



Source: Indianapolis Metropolitan Police Department UCR data.

Notes: Data are for beats prior to 2007 merger.

Beats marked with N/A are separate jurisdictions not covered by IMPD.

Percent = Number of gun-related aggravated assaults occurring in beat from 2001-06 / Number of gun-related aggravated assaults occurring in all beats from 2001-06 x 100.



INDIANA UNIVERSITY PUBLIC POLICY INSTITUTE

334 North Senate Avenue, Suite 300 | Indianapolis, IN 46204 | Phone 317.261.3000 | Fax 317.261.3050 | www.criminaljustice.iupui.edu



**SCHOOL OF PUBLIC AND
ENVIRONMENTAL AFFAIRS**

INDIANA UNIVERSITY
IUPUI