



# Doubling Research at IUPUI Can It Be Done?

**Charles R. Bantz**

**IU Research Symposium**

**April 13, 2004**

# The Call to Double IUPUI's Achievements

- o Challenges
- o Opportunities
- o Assets
- o Commitment





# Challenges

- o Brain Drain
- o Job Losses



# Opportunities

## Economic

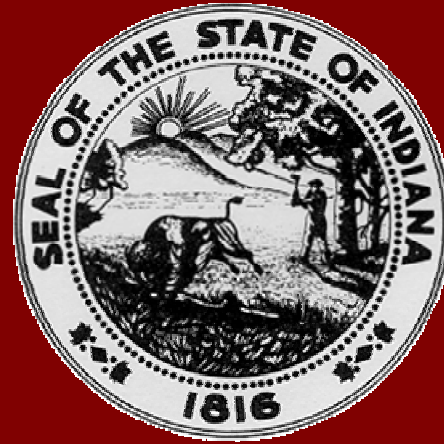
### Development Foci:

- o life sciences
- o information technology
- o logistics
- o advanced manufacturing
- o nonprofit enterprises

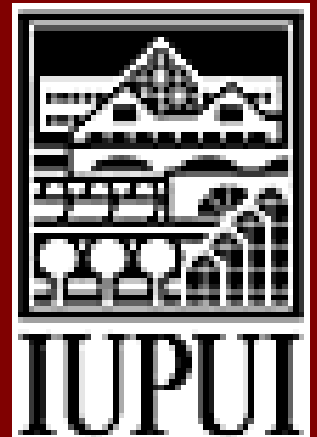


# Assets

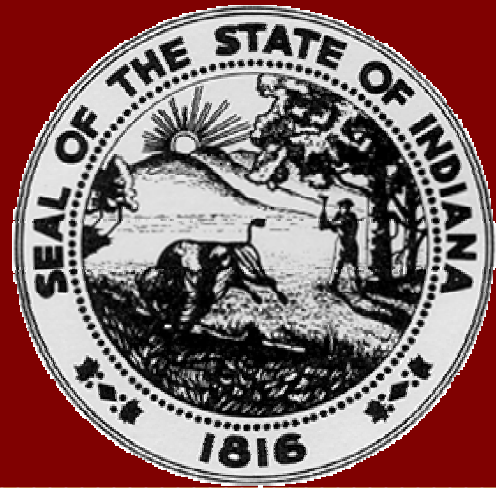
- o Public
- o Private
- o Partnerships
- o IUPUI



INDIANA  
UNIVERSITY  
SCHOOL OF  
MEDICINE



# Public Assets: 21st Century Research & Technology Fund



**Fort Wayne Journal Gazette**

**March 7, 2004**

**“Cartilage regeneration looks like  
growth industry”**

**School of Science**

**“Discovering the Secrets  
of Regeneration” (\$1.7m)**

**School of Medicine**

**“Gene Therapy for  
Joint Damage” (\$2m)**



# Private Assets:

# Lilly Endowment

- o Pervasive Computing
- o Indiana Genomics Initiative
- o IUPUI Solution Center
- o Center on Philanthropy
- o Center on Urban Policy and the Environment





**Partnership Assets:**  
**Indiana Future**  
**Fund**  
**\$72 million**



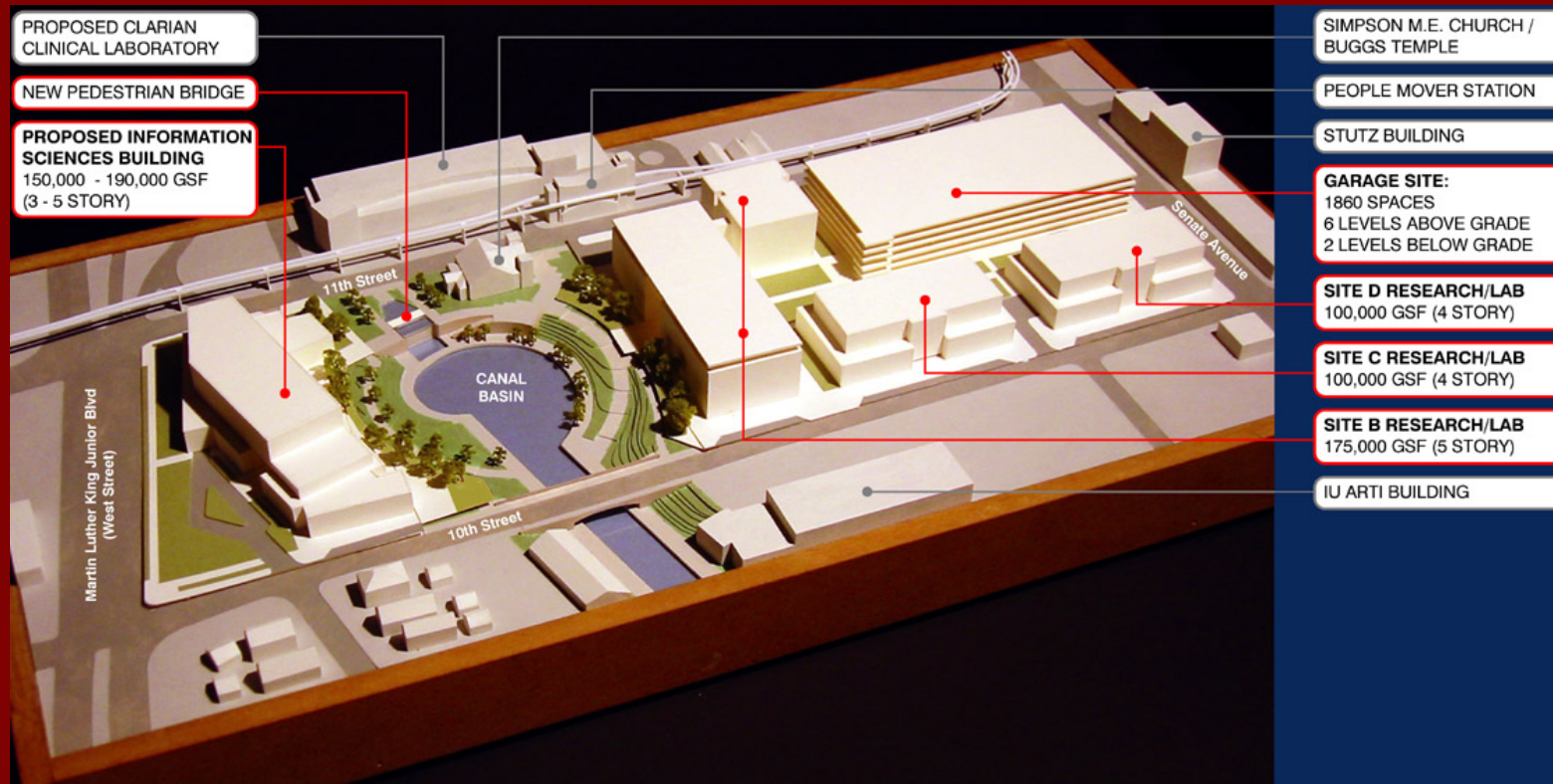


# Partnership Assets: **Facilities Construction**



**\$1 billion in life sciences related construction has been completed downtown since 1995**

# Partnership Assets: Research and Biotech Park at Canal Station



# Partnership Assets: Information Sciences

Current View



Proposed View



# Partnership Assets:

## Indiana Venture Center



**Steve Beck, President**

**“Usually, increasing exports is good economic news. But as Indiana’s economy has stalled, we’ve been shipping all the wrong resources out of state – college graduates, for example.”**

**Todd Saxton, Faculty Fellow**  
**Assistant Professor of**  
**Management**  
**IU Kelley School of Business**  
**at IUPUI**





# Partnership Assets: Biotechnology Research and Training Center

**Mayor Bart Peterson:**

"From our world-class  
companies to our  
outstanding  
universities and our  
groundbreaking  
research projects,  
Indianapolis is poised  
to become an  
international leader in  
life sciences."



# Partnership Assets: **Emerging Technologies Center**

**Mayor Bart Peterson:**

**“The success of  
companies  
assisted by the  
ETC will mean new  
jobs and new  
economic  
opportunities for  
our citizens.”**



# Partnership Assets: BioCrossroads

**Gus Watanabe :**  
"What we'd like  
to do is build on  
and leverage the  
strengths that  
are already here  
as well as the  
universities, and  
begin to  
stimulate activity  
in new  
companies."





# Partnership Assets: Indiana Health Information Exchange



**Thomas Inui, CEO, Regenstrief Institute:**  
"There's a critical need for effective information-sharing that might affect a physician's treatment decisions. Indiana can be a pioneer in this area. Software sales and services is clearly an industry that's about to explode."

**IUPUI Assets:**

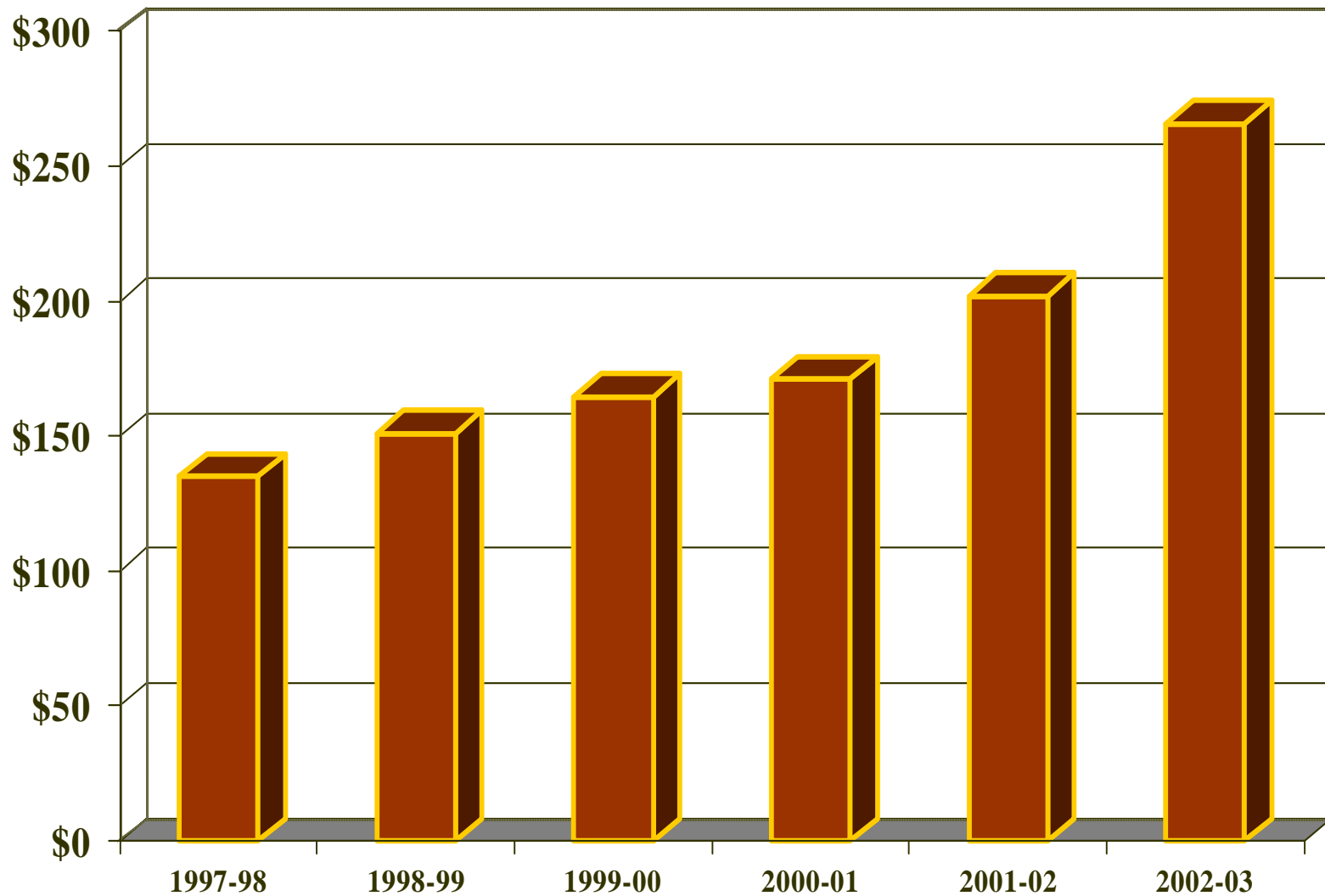
# **Infrastructure**

- **INGEN: 5 Programs and 9 research cores**
- **School of Informatics**
- **Regenstrief Institute Medical Records System**
- **Stark Neurosciences Institute facilities for noninvasive biomedical imaging.**



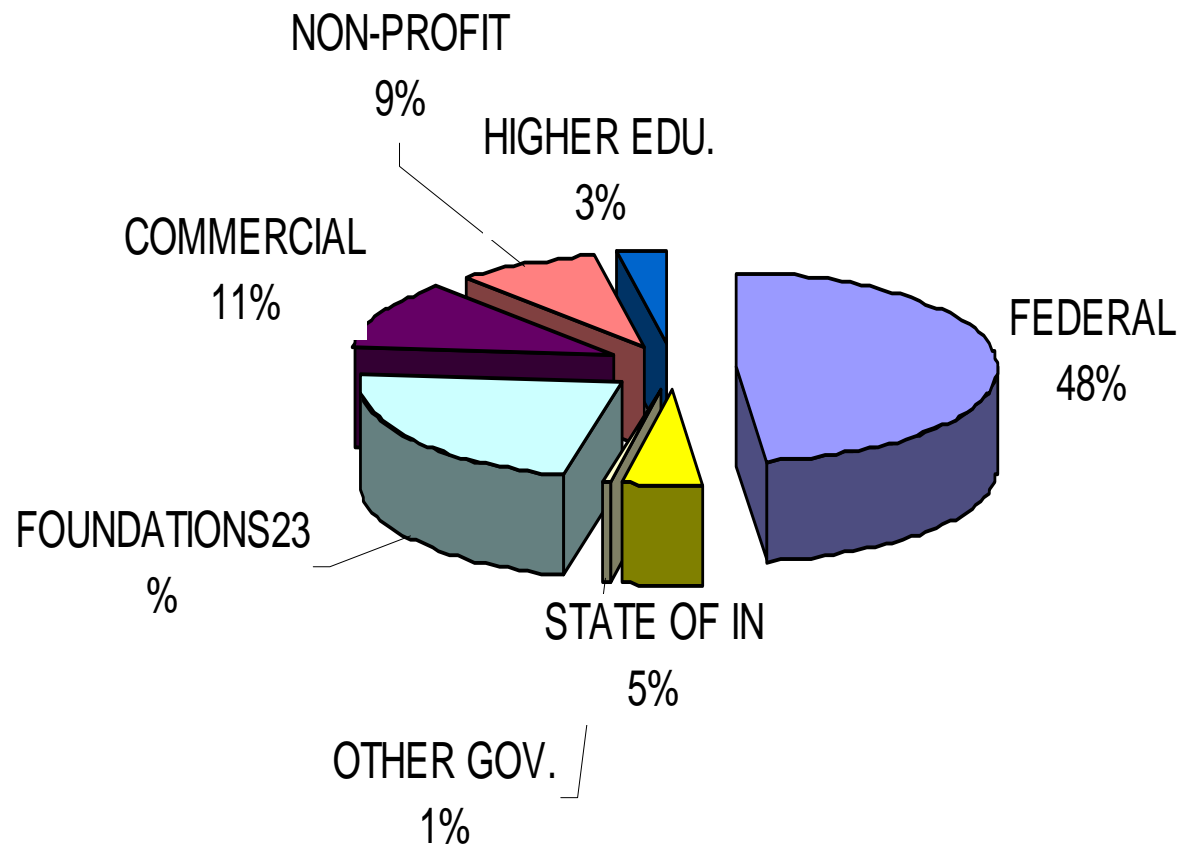
**IUPUI Assets:**

# **Research Income at IUPUI**



## IUPUI Assets:

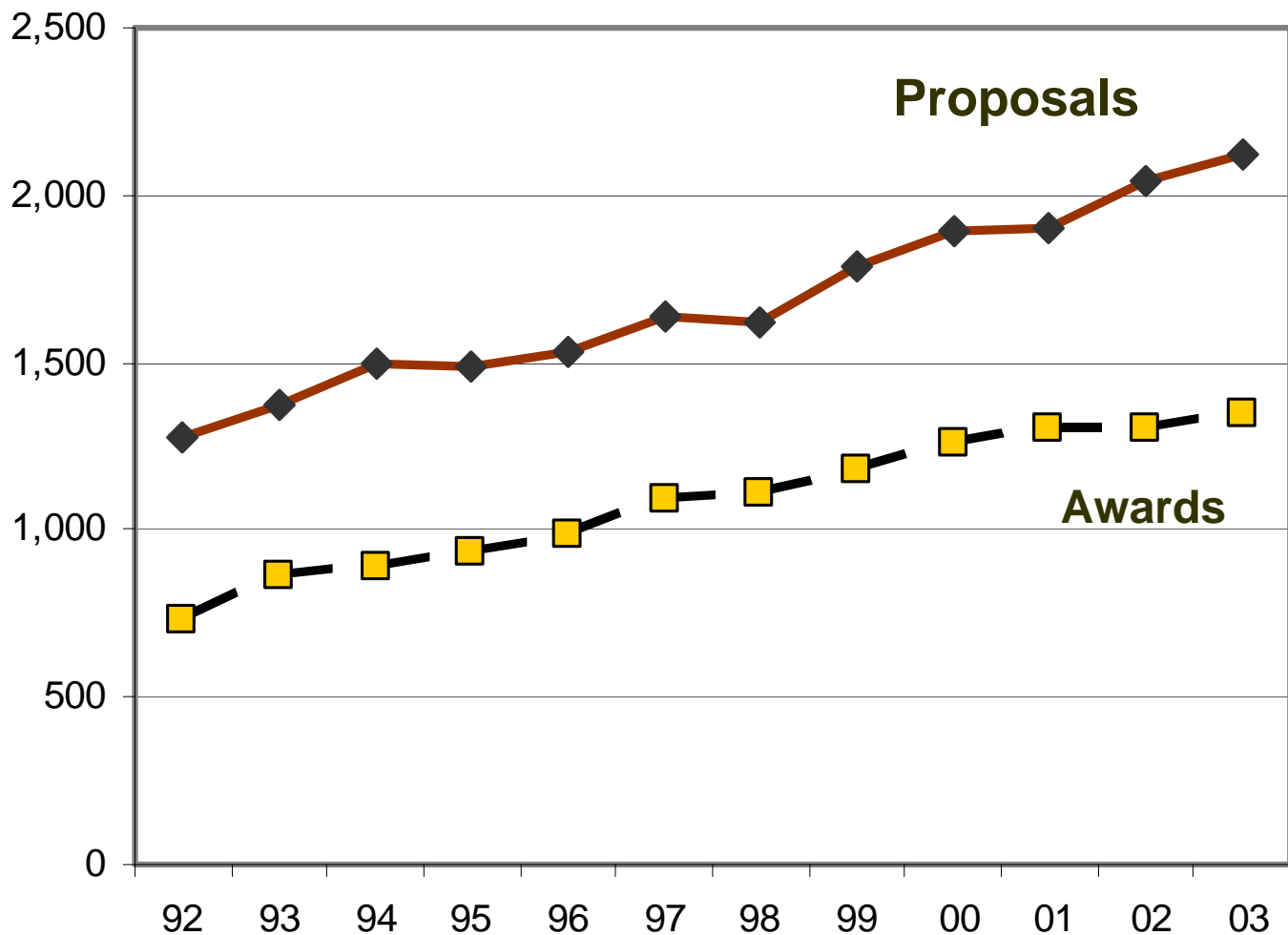
# Sources of Sponsored Funding FY 2003



## IUPUI Assets:

# IUPUI Proposals and Awards

FY 92 - 03



# IUPUI Assets: **Faculty Innovation**

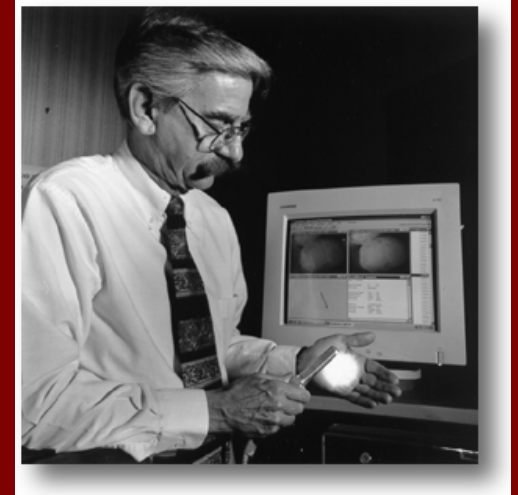


Russ Eberhart

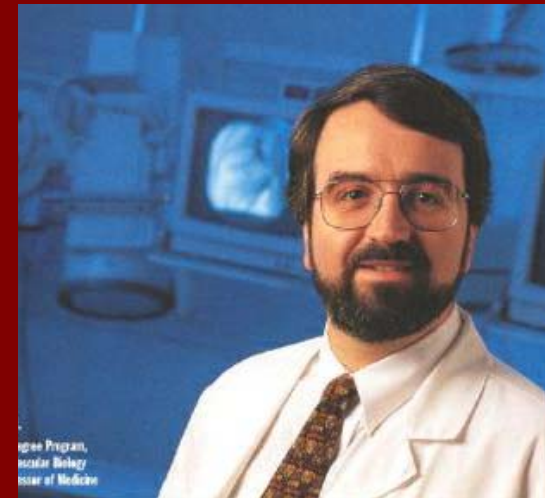


Mostafa Analoui

IUPUI Patent Holders



George Stookey



Keith L. March

IUPUI Assets:

# CyberLab Projects

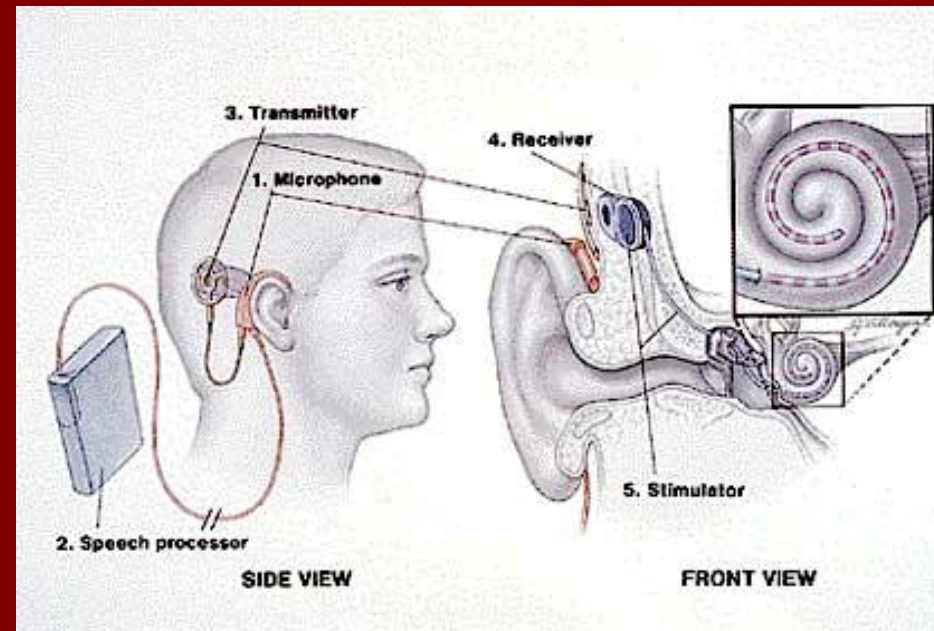




IUPUI Assets:

# Cross-Disciplinary Research

- Neural auditory prostheses
- Cochlear implants
- Auditory brainstem implants.

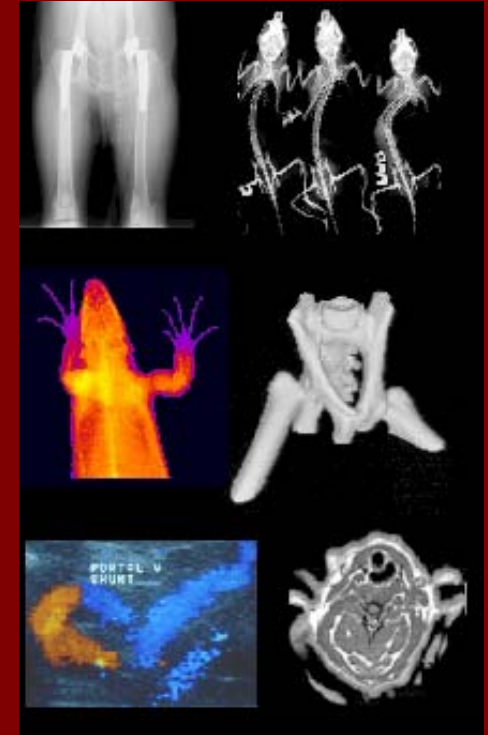


Bioelectrical Engineering  
Mario Svirsky  
Sponsor, NIH

**IUPUI Assets:**

# **Cross-Disciplinary Research**

**Imaging  
instruments to  
study human  
physiology**



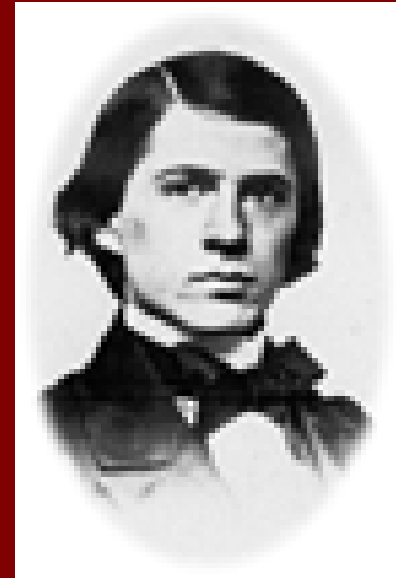
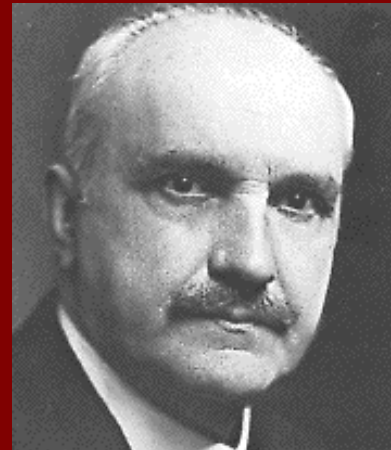
**Biomedical Imaging:  
Gary Hutchins, Evan Morris, Ti Lie, and  
Yun Liang**

**Sponsors: NIH, Whitaker Foundation,  
21st Century Fund, INGEN Center**

**IUPUI Assets:**

# **Major New Centers/Institutes to Advance Scholarship**

**Institute for American Thought  
Lake Family Institute on Faith  
and Giving  
Center for International and  
Comparative Law**



**IUPUI Assets:**

# **Cross-Disciplinary Research**

## **PDA Device for Music Therapists**

### **Collaborators**

- **Music**
- **Health and Rehabilitation Sciences**
- **Informatics**
- **CyberLearning Lab**
- **Computer Technology**
- **Digital Music Library (IUB)**



# **Ideas from the Task Force on Doubling Research at IUPUI**

- **Retain productive faculty**
- **Establish research professoriate**
- **Hire promising investigators**
- **Raise tenure threshold**
- **Deploy startup packages, bridge funds, targeted funds (e.g. interdisciplinary research)**
- **Create institutes to bring faculty together across disciplines**
- **Reward faculty mentoring**
- **Space, space, space**

# IUPUI'S Commitment

**Double the ideas  
Double the energy  
Double the jobs**

