

Rappelling view

This is the view Sagamore photographer Tom Stratman had last Wednesday from the roof of Cavanaugh Hall during an ROTC-sponsored rappel off the east face of the building.

The rappel was held in conjunction with last week's 1985 Spring Festival, hosted by the Student Assembly.

Saturday, May 4, the last day of spring classes, the ROTC cadets will host an all-campus open rappel, where they will be instructing students.

Rappelling is currently used by the military for rapid deployment of light infantry in mountainous terrain.



The SAGAMORE

the weekly news magazine of Indiana University-Purdue University at Indianapolis

April 22, 1985

Volume 14, No. 15



Members of The Late Show performed last Thursday on the library mall.

TAMMY CECIL/The Sagamore

Music, sunshine highlight festival

by Tammy Cecil

Under a blaze of hot sunshine and the scent of coconut suntan lotion, IUPUI students relaxed last week before the onalagat of finals.

Whether students were on their way to class or just relaxing to "catch some rays," a variety of entertainment was provided for them at the Student Assembly sponsored event.

Mark Preston, organizer of the festival, said it was designed to give students something in return for their Student Activity money.

"This is the most direct way we can give them something like in the spring and fall," Preston said.

As hot dogs and hamburgers grilled, a long menu of musical talent performed on the library mall.

Fans of reggae music were treated to the sounds of Quasar on Tuesday, while devotees of the 1950's and 60's rocked, rolled and remembered with The Late Show on Thursday.

Followers of the New Wave sound attended a performance of Tourist at the Herron School of Art on Wednesday.

An extra band, Origin, was added to the festivities Wednesday following the cancellation of Blue Hue and the Colour Tones, because of a rain threat.

The reason the bands played only for an hour and fifteen minutes, Preston said, was because the festival budget has

been cut from \$5000 to \$2500 a semester.

He added that \$500 left over from the Fall Festival was used to organize a rock hop in the main gymnasium of the IU Natatorium last Friday night. The dance, which featured Jeff Bowen and the Colors, was free.

The break provided by the Spring Festival seemed well-received by the students.

"It was pretty good. A lot more relaxing than sitting in the library," said Kim Mainord, a nautical records administration major.

"I think it's great," said freshman Randy Chapman. "It's good to get out in the warm air and to talk to the people you know go here but never see."

Labor force growing

by Mario Morone

According to the Bureau of Labor Statistics, the labor force will grow for the next 15 years at a slower rate than in the last two decades.

The labor force, consisting of both the employed and unemployed, totaled about 110 million in 1982. By 1995 the force will have increased to 131 million, a 19 percent increase over the 1982 level.

Brian Vargus, professor of sociology and director of the public opinion lab at IUPUI, said changes in the nation's economy will account for the rise.

"America's economy has changed from one of industrial to one of service," Vargus said. "The economy requires more service workers, but their jobs don't carry middle-class paychecks."

Through the mid-1990's, the primary factor in labor force growth will be the continued rise in the number of women seeking jobs. Women will account for nearly two-thirds of all workers between now and 1995.

Education also plays a primary role for those planning careers. Between 1970 and 1982 members of the 18-64 age group with at least one year of college increased from 26 to 39 percent.

This increase in educational attainment is due to older workers retiring, many of whom had little formal education, and the influx of young people into the labor force.

Among workers aged 25-34, nearly half have completed at

least one year of college.

Robert Sandy, IUPUI assistant professor in the Department of Economics, said research shows that returning to college is a sound investment, especially if viewed financially. "Time and money put into a college degree pays back about eight percent interest. It would be the same as buying an inflation-proof, long-term bond at eight percent."

"If you have the resources to invest in yourself, it can prove to be extremely valuable," Sandy said.

Women's art festival this week

The IUPUI Women's Student Caucus will hold its 1985 "Women In The Arts Festival" this Tuesday and Wednesday.

The two-day festival will focus on women's work and roles in poetry, drama, dance and drama. There will be live performances in drama and poetry, along with films and fine arts displays.

All events will be held at the Michigan Street campus in Cavanaugh Hall and the Lecture Hall.

For further information, contact Kathy Collins at 264-7611.

INSIDE

Editorial.....	3
Notices.....	4
Entertainment.....	5
Sports.....	6
Classified.....	7

THE DOWNTOWN EXPERIENCE



**OPEN
MAY 1ST**

- Featuring 19 unique floor plans including English basement townhouse apartments
- Money saving electric heat pumps
- 2 1/2 blocks from Monument Circle



The Downtown Experience

637-1266

*The Acquisition and
Restoration Corporation*



Downtown's Newest Attraction

25 foot TV screen

MON 25¢ DRAFT BEER
4-10

231 South Meridian Street 631-5838



THE CEDARS

Three blocks west of Lafayette Road on 34th St

- Studios, 1 and 2 bedroom Apartments
- Prices start at \$240
- GAS HEAT, COOKING AND WATER FULLY PAID
- Close to IUPUI Campus and Lafayette Square Mall
- Laundries in each building

Open Mon.-Fri. 9:00-5:00
Sat.-Sun. 12:00-4:00

Phone: 293-0122
3503 N. Rybolt Apt. A



FREE

Home Buyers Seminar

**Tuesday, April 30, 1985 7:30 p.m.
J. Everett Light Career Center
1900 East 86th Street**

Come and receive answers to all your
home buying questions.

- Financing
- Down payment
- Mortgage qualification
- Tax advantages

Guest speakers
courtesy of
**Keystone Mortgage
Corporation**

For further details, call 844-5111 No registration required

Sobering Advice
can save
a life



EDITORIAL

Spring is here, and registration's better

Spring has sprung, the grass has riz, and the editorial staff of the *Sagamore* would like to congratulate the University on the smoothness, efficiency and overall pleasant atmosphere of registration this semester.

Memories of my first IUPUI registration (in August of 1983) bring shivers of horror to my soul. There I was — me, and about half the population of central Indiana, that is — crunched together in line after endless line, baking in the heat and aching in the feet all over a couple of floors of Cavanaugh.

For parts of two days I stood in various lines for most of the afternoons; the first day the computers went down. That threw everything into chaos . . . well, futher chaos, because nobody, at least nobody in the lines, was absolutely sure of what was going on at any given time anyway. Rumors spread like wildfire: yesterday the computers had been down for three hours at a stretch, etc., etc., etc.

Nobody could tell you whether to go home or stick it out, although every room seemed to be filled with official tables behind which sat and stood official people.

They were as confused as we were.

After that, of course, you had to make the circle of the outside corridor in the Lecture Hall paying fees and acquiring stickers and the like. More tables and more officials and more lines, albeit short ones. Least the lines were short.

When I registered for next fall's classes this past Monday morning, the contrast was so great that I can hardly believe the two experiences were for the same purpose. And this was despite the fact that two things actually went wrong in the process.

Both problems were completely painless to correct — proof of a well-planned and efficient system.

The first problem was that I never received notice of my registration appointment. One phone call, and a pleasant voice on the other end cleared that right up. The next — I put the wrong section number on my card and had to retrace steps to correct it — which took, at the most, two extra minutes. The whole registration procedure didn't take more than ten.

Ten minutes, and I even got in the sections I wanted!

A little more luck, and maybe I'll be able to find a parking space!

by Joyce Jensen

Letters Welcome

Every week the *Sagamore* reserves space on this page for letters from readers. Your views are welcome.

Although we will consider letters of any length and on any topic, we will give preference to letters of less than 500 words and those addressing matters of direct concern to the IUPUI community. If necessary, we will edit your letter for brevity or clarity.

For legal reasons, your letter must include your name and address. The letter also should include your telephone number so that we may contact you if necessary. Your address and telephone number will not be published, and your name will be withheld upon request.

You may bring your letter to the *Sagamore* office, CA 001G, or send it through campus or U.S. mail.

Michael Thackston . . . Editor in Chief
George Carter . . . Advertising Manager
Kyle Capron . . . Photography Editor
W.B. McFee . . . Production Manager
Rick Callahan . . . University Editor
Joyce K. Jensen . . . Op/Ed Editor
Abby Marmion/ Matt Shrum . . . Sports Editor

The *Sagamore* is a weekly news magazine published by and for students at Indiana University-Purdue University at Indianapolis. An auxiliary enterprise of IUPUI, the *Sagamore* is not an official publication of the university; it neither reflects nor is governed by the views of university administrators or faculty.

As a service to readers, the *Sagamore* publishes notices of IUPUI events. Typed or legibly handwritten information

LETTERS TO THE EDITOR

Where does gas tax money go?

To the editor:

Concerning the recent 4' gasoline tax hike, I would like to question its faith.

I know I am not the only one to notice that the streets and highways in this state cannot be compared in any way to the streets and highways in any other state. Just where is the money appropriate by last year's budget for the purpose of maintaining these streets?

Will the new 4' tax funds go in the same direction as the last portion of the budget went? I am not trying to accuse anyone

of misusing tax payers' money; however, this does raise the question of the faith of these funds.

Will the streets' potholes get bigger, our cars suffer and our pocketbooks get smaller? I have lived for a long time in another state without even having to worry about my car disappearing in a chuck hole on my way to work.

However, thanks to the streets of Indianapolis, half of my pay check is going for car repairs. I remember watching a program on local tv about this matter being investigated. What happened? Are we still considering raising the same ques-

tion again? Where is the justice? Please wake up and resurrect this matter again.

What do you think? Are we as students broke enough without having to worry about an extra 4' per allow and major car repairs?

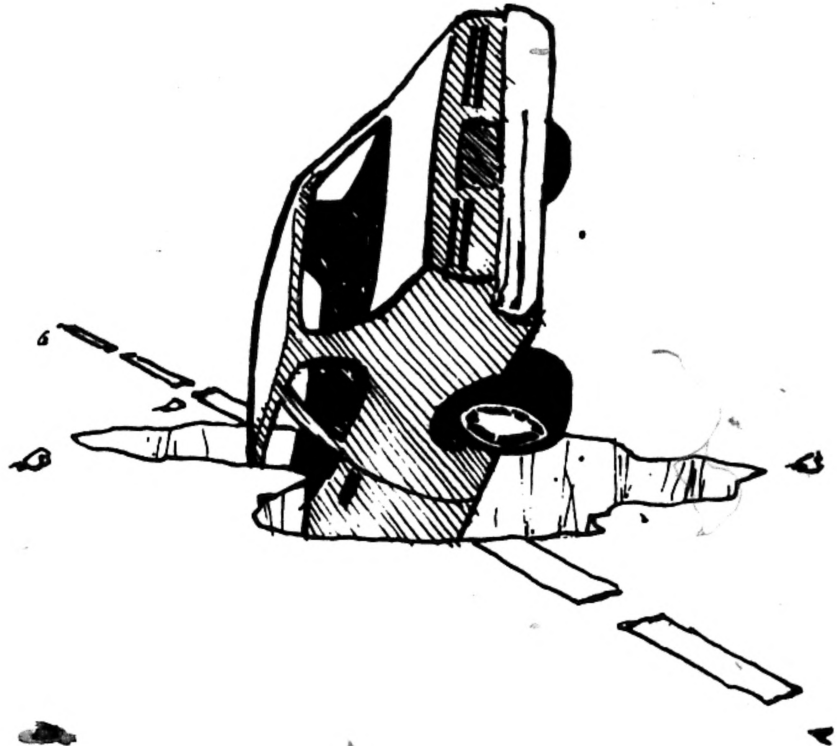
Ziyad Rajabi
Mary Ann Belg

Thanks!

For all students who voted Bravard:

I would like to extend my thanks to all of you for voting for me.

Sincerely,
Tina Sue Bravard
Student Senator-at-Large



Sagamore illustration by Stephen Neale

The editor will reject letters deemed potentially libelous.

Letters must include the writer's name, address and telephone number, so that the editor may contact the writer if necessary; addresses and telephone numbers will not be published, and the writer's name will be withheld on request.

Address: The *Sagamore*
425 Agnes St., Rm. 001G
Indianapolis, IN 46202
(Campus Mail address:
CA 001G)

Telephone: Editorial . . . 264-4008
Advertising . . . 264-3456

Except where otherwise noted, all contents are copyright © 1984 the *Sagamore*.

\$3.00 OFF TO IUPUI

CITY TAPROOM

• DOWNTOWN •

28 SOUTH PENNSYLVANIA ST.

NACHOS, MEXICAN SPUDS, DELI &
SPECIALTY SANDWICHES, OVER 40 BEERS

(Coupon good M-Th, 4-7 Happy Hour on
two sandwich or appetizer orders. Expires 6/30/85)

GRAND OPENING

DR. DAVID
TAVEL
OPTOMETRIST VISION CENTER OPTICIANS

Permalens-XL

EXTENDED WEAR LENSES

\$79⁹⁸

The finest extended wear
lens. Greater water
content, easier wear,
longer life.

- EYE EXAM REQUIRED NOT INCLUDED IN PRICE
- PRICE ON FIRST PAIR ONLY
- POWERS FROM PLANO TO 10.00

BAUSCH & LOMB



NaturalKint
Soft Contact
Lenses

CHANGE THE COLOR OF YOUR EYES (AS EASILY
AS YOU CHANGE YOUR MIND.)
AQUA BLUE-JADE-SABLE
EYE EXAM REQUIRED

\$79⁹⁸

\$39⁹⁸

BAUSCH & LOMB DAILY
WEAR SOFT LENSES

- EYE EXAM REQUIRED
- NOT INCLUDED IN PRICE
- PRICE ON FIRST PAIR ONLY

EYEGLASSES

THIS COUPON GOOD FOR *20
OFF THE PRICE OF ANY COM-
PLETE PAIR OF PRESCRIPTION
EYEGLASSES.

\$20

APPOINTMENTS AVAILABLE BUT NOT NECESSARY.
THIS CARD MUST BE PRESENTED WITH ORDER.
OTHER DISCOUNTS OR VISION PROGRAMS INVALID
WITH THIS OFFER. EXPIRES 4/30/85.



OPEN MONDAY THRU SATURDAY 9:00 AM TO 5:30 PM

PHONE: 635-6000

1 N. ILLINOIS STREET

(CORNER OF ILLINOIS AND WASHINGTON)

Other Locations in: West Lafayette, Kokomo, Anderson,
Muncie, Terre Haute, and Richmond.

IndyPub

Appearing Wed.-Sat.

Mark Reed

Happy Hour 3-6
Complete Menu
Serving Late
Evenings

4010 N. High School Road
299-5510



SHAKESPEARE NEVER KNEW PILOT PEN.

He wrote beautifully without our
Razor Point marker pen and Precise Rolling Ball...
but imagine what he might have written with them.



You may not be a
Shakespeare but with a Pilot
Razor Point there's no telling what
you could do. The Razor
Point's durable plastic
point conveys every word
in a smooth, thin unbroken
flow. Express your
individual personality with
every stroke.
Only \$6.

PILOT
RAZOR POINT
marker pen



The perfect companion to the
Razor Point is also the ultimate in
rolling ball technology. The liquid ink
of the Pilot Precise flows
smoothly. Dries instantly.
Its tungsten carbide ball,
offering the strength of
a ballpoint, insures a
controlled non-skip stroke
— even through carbons.
Only \$1.99.

PILOT
PRECISE
Rolling Ball

NOTICES

Deadline for "Notices"
is noon Tuesday.

IUPUI Student Health Insurance Committee This committee is composed entirely of students and meets periodically to revise the current policy. Interested students should contact Todd Taylor, Chairman, by April 24, by phoning Linda at 264-7175. You will be contacted regarding time and place of first meeting.

The School of Education's Teacher Education Admission Tests for the Summer Session will be administered June 21, 1985. Students planning to take the tests must register in Education Student Services ES 3131. The regular registration period is April 15 - June 14, 1985. Late registration is June 17-19, 1985.

Hanon's own "Honeymooners" will be surfacing in a rare public appearance 10 p.m. Thursday April 25th at Spirit's. Absolute fun guaranteed! Questions: call Scott Sanders (A.K.A. Jack Judy) at 923-7134 or 842-0455.

The School of Science will celebrate its 15th birthday at "Spring Fling," Wednesday April 24 from 11 a.m. to 4:30 p.m. on the 38th St. campus. Live entertainment will include rock band Colors, the Midsummer Mime Theatre, a magician, clown and more. There will be free cake and punch for everyone.

The School of Education's Teacher Education Admission Tests for the Summer Session will be administered June 21, 1985. Students planning to take the tests must register in Education Student Services ES 3131. The regular registration period is April 15 to June 14. Late registration is June 17-19.

Important notice to students Please note in the summer and fall 1985 schedule of classes the telephone number for university division reads, 265-3986, this is incorrect. The number should read 264-3986.

1985 Spring Family Album Photo Session IUPUI Black Student Union invite all members, faculty and staff to attend. Photographs shall be taken at the IUPUI sign located at West St. and Michigan St. April 21st 4 p.m.; raindate April 28th at 4 p.m. Be there!

Information regarding the Spelcer Essay Contest is available in the Political Science office. Prize: \$10,000. Deadline: Dec. 31, 1985. Topic: "How can we, without adopting socialism or giving up our treasured freedoms, modify American capitalism to make it more equitable and reduce the level of ideological conflict with the Soviet Union so as to make possible an end to the nuclear nightmare?" Essay length: 5,000 words or less.



Sheryl Burris fires a pitch towards the plate in a recent game. Burris threw a no-hitter last week against Taylor.

Softball now 23-5

IUPUI's women's softball team ran its winning streak up to 18 games last week with double-header sweeps of Taylor and Franklin.

The Metros have not lost a game since their spring break trip to Orlando.

This week is the last of the regular season for the Metros. IUPUI will travel to Manchester Monday, April 22 and then host two double-headers this weekend. Saturday, April 27 the Metros will host Butler and Sunday, April 28 the Metros will host the University of Toledo.

IUPUI will host the District 21 tournament Friday, May 3 and Saturday, May 4. IUPUI will also host the NAIA National Championship May 16-18.

Speech night finals at IUPUI April 22

Six students from C110 speech classes will compete in the Speech Night Finals, on Monday night, April 22, 1985, at 7:30 p.m. in Lecture Hall 101. The preliminary competition was held on April 15.

In the Semifinal event a representative speaker and judges from 34 sections of this introductory speech course met to select those six finalists in tonight's contest.

The six finalists are Debbie Gehrke, Greg Lammers, Linda K. Brown, Dorothy A. Easterly, Kara D. Carpenter, and Douglas A. Hutton. This is also the speaking order for the final event.

Softball leagues

Coed slow pitch, men's slow pitch and women's fast pitch leagues are being formed on the IUPUI softball diamonds. Play will begin on or about June 17, and continue until approximately August 11, 1985. Entries will be accepted from any IUPUI student, faculty, or staff member. At least one half of the members of each team must be students or employees of an academic unit, support unit, or hospital.

Each team will play at least eight games (once per week) under the lights, with balls, umpires, and post season awards furnished. The entry fee is \$175.00 per team.

Rosters, complete with team name and entry fee, should be submitted to Jeff Vessely, PE 264, 901 W. New York Street, Indianapolis, IN 46223. The league nights, Monday through Thursday, will be filled on a first come, first served basis. For additional information, telephone 264-2824.

Williamsburg
For People *with Lake*
... who love living!

Olympic style pool matches luxury clubhouse and other attractive scenery at Williamsburg on the Lake Apartments!

AIR CONDITIONED
1 & 2 BEDROOM APARTMENTS
2 & 3 BEDROOM TOWNHOUSES

FROM **\$299** A MONTH

WILLIAMSBURG on the LAKE

West 38th and Guion Road
Phone 923-1374
Open Weekdays 10 a.m. to 6 p.m.
Sat & Sun Noon to 6 p.m.

Equal Housing Opportunities

DR. SANFORD W. PETERSON'S RESUME REGISTRY

Quality is not Expensive,
Quality is Priceless

SERVICES INCLUDE
RESUME WRITING

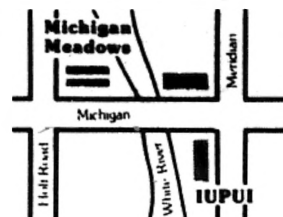
PROFESSIONAL & EXECUTIVE
**CAREER CONSULTING
INTERVIEW COUNSELING
REASONABLE RATES**

435 E. MAIN STREET
SUITE K-2
GREENWOOD IN 46142
PHONE: 887-1797

Michigan Meadows APTS.

Relaxed one, two, and three bedroom apartment living, just two miles from campus

- Heat and Water paid
- On city bus lines
- Laundry facilities in each building
- Separate lease agreements
- Executive suite available
- Short term leases available



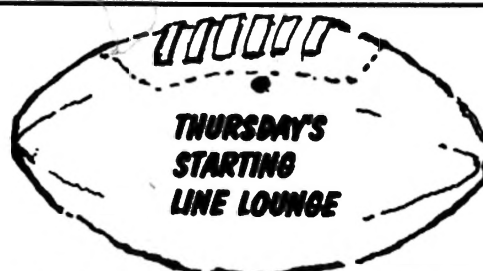
3800 W. Michigan Street

Office in apartment 1206

Open 9-6 daily
10-4 Saturday

244-7201

The Regency Windsor Companies



THE WESTSIDE'S NEWEST SPORTS BAR

OPEN 11:00 am-3:00 am MONDAY through SATURDAY

WATCH THE "CUBS" ON OUR GIANT TV

75' DRAFT
95' LONGNECKS
\$1.25 DRINKS
AT ALL TIMES

VIDEO GAMES POOL TABLE

8331 Crawfordsville Road
Next to Benny's, attached
to Dollar Inn Motel 244-3001

BLOOD PLASMA DONORS NEEDED

\$18.00 per week +
Earn money while
you study!

Indianapolis Blood
PLASMA Inc.
500 N. Capitol

Corner of Capitol and Michigan

This ad worth \$5.00 to new donors or
old donors who have not donated for the
last six months.
One ad per customer.

7 a.m. to 4 p.m.
Monday thru Saturday

This ad worth \$5.00

This ad worth \$5.00

This ad worth \$5.00

**IUPUI STUDENTS ONLY—
NO SECURITY DEPOSIT
SPECIAL STUDENT RATES**

**Watergate
Apartments**

ALL OF THIS WITH GAS,
HEAT AND WATER PAID.
10 MINUTES FROM CAMPUS.
CALL FOR MORE INFORMATION AT 291-3024.

1 BR. — \$260.
2 TH. — \$335.
2 BR. — \$295.
3 TH — \$410.

**Shoreland Towers
IUPUI**

**Affordable
Housing for
IUPUI
Students**



Now Accepting Applications
Efficiency & One Bedroom apartments
From \$170. to \$245.
All Carpeted & Utilities included

Eligibility:

Under Grads 9 credit hours or more
Grad Students 5 credit hours or more

5 minutes from 38th St. Campus
10 minutes from Herron School of Art
15 minutes from IUPUI Main Campus
On the bus line
Close to shopping
Growing University Environment

3710 N. Meridian St.
Managed By IUPUI Real Estate Department
925-3420

\$5 EXTRA
With this ad
For your first
plasma donation
Total \$15

EARN \$80 in 3 Weeks

Hours: Mon., Tues., Wed., Thurs., 6:00 a.m.-7:00 p.m.
Fri., 6:00 a.m.-6:00 p.m. Sat., 7:30 a.m.-3:30 p.m.

plasma alliance
9 North Ritter, Indpls., IN
352-9157

BRIARWOOD

Beautifully landscaped community
Conveniently located near
Interstates and Lafayette Square
Washer & dryer hook-ups
Large walk-in closets
Plus Township Schools
Your choice of wallpaper
Six different floor plans
Cable TV
Swimming pool & clubhouse

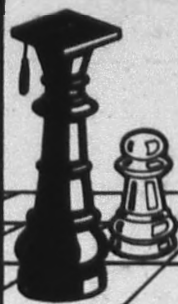
***200 Off 1st
Full Month's Rent**
\$100.00 deposit
48th & High School Rd.
299-7924
Daily 10-6, Sunday 12-6

R-Revel Companies, Inc. Marketing & Management

**Stanley H. Kaplan
The SMART MOVE!**
PREPARATION FOR:
GMAT • LSAT • GRE

INDIANAPOLIS AREA

Stanley H. Kaplan Ed. Ctr.
2511 E. 46th Street
Indianapolis, IN 46205
(317) 546-8338
BLOOMINGTON AND SOUTH BEND



**Park Lafayette
IUPUI**

**Affordable Housing
for
IUPUI Students**

Now Accepting Applications for
1 & 2 Bedroom Apartments Heat Furnished
From \$205 to \$221 (total electric)
TOWNHOUSES
2-3-4 Bedroom
From \$186 to \$262 (no utilities furnished)

Eligibility:

Under Grads 9 credit hours or more
Grad Students 5 credit hours or more



5 minutes from Downtown Campus
University Environment
Close to Shopping

3621 Lawnview Lane 2300 North
on Tibbs Avenue

Managed By IUPUI Real Estate Department

635-7923

(Cont. from pg. 7)

For Rent

Summer Housing Purdue student wanting to sublease or board in IUPUI area. Please contact Scott Givens, 640 Russell, W. Lafayette 47908. (317) 743-6427 (31)
Furnished three room apartment. Private Bath and Entrance Utilities furnished. 920 North Holmes (2700 W) \$200./month 241-5610 (30)

Miscellaneous

Indianapolis objective (Admirer of Ayn Rand and her writings) desires to organize informal get-together of like minded individuals. If interested, call Philip Oliver at 849-4460. Please leave message on machine if it answers. (30)

Help Wanted

Friendly, clean, and dependable salesgirl wanted for German cafe and bakery. Parttime and weekends. Please apply at HEIDELBERG HAUS 7625 Pendleton Pike Indpls. (31)
D H L World Wide Express A fast growing, people oriented company is presently accepting applications for a part-time billing clerk. Applicants should be neat in appearance, detail oriented, flexible, a good figure aptitude and customer oriented. Applications will be accepted from 9 a.m. to 5 p.m. at 2660 Rand Rd. Indianapolis, phone 241-4464. (30)
D H L World Wide Express A fast growing, people oriented company is presently accepting applications for part-time courier guard. Applicants must be over 21, bondable, and have a clear driving record for the past three years. Only those that meet these requirements need apply. Applications will be taken from 9 a.m. to 5 p.m. at 2660 Rand Rd. Indpls. Phone 241-4464. (30)

Wanted — Experienced Summer Lifeguard, major northwest apartment community, certified; Apply at Knob in the Woods Apartments, 2100 W. 71st Street, Indianapolis. (31)
Alaskan Jobs: For information send SASE to Alaskan Job Services, Box 40235 Tucson Arizona 85717 (31)
Local pest control firm needs part time sales-service people. Can be full time this summer. Call 926-9292 between 8:30-4:30 (32)



International Youth Exchange, a Presidential Initiative for peace, brings teenagers from other countries to live for a time with American families and attend American schools. Learn about participating as a volunteer host family.

Write: YOUTH EXCHANGE
Pueblo, Colorado 81009

The International Youth Exchange

**For interview
call: 257-4685 or
255-8346**

local (317) 845-2288
outside Indpls. 1-800-845-3400

636-4466

Drums

Two bedroom mobile home with fireplace, appliances, 1 1/2 baths. Must sell immediately make an offer around \$13,000. Call Chris 253-4311 or 293-2222. (31)

Futons — 100% cotton traditional Japanese mattresses, 283-3549 P.O. Box 30015 Indpls. 46230 (31)

Roommate Wanted to share
three bedroom double in
Broadripple area. Call
283-5713
(31)

Equal Housing Opportunity

**SPEEDWAY
EQUAL HOUSING
OPPORTUNITY**

**No Fee Call Sandy
924-5554**



**...Business Card
advertising that is!**
Call George Carter
at the **SAGAMORE**
for more information.
264-3456

639-6101

Experienced typist. Fast, accurate, neat. Westside area 298-8192. (31

Zink Word Processing Typing, resumes, term papers, near Glendale. 251-3589. (33)

(Cont. on pg.6)

We are looking for neat, energetic individuals to work us:

BARTENDERS	Tip (21 or older)
HOSTESSES	(18 or older)
BUS PEOPLE	Tip (18 or older)
KITCHEN HELP	starting pay

**210 S. MERIDIAN
DOWNTOWN CORNER OF
S. MERIDIAN & GEORGIA ST.
ASK FOR THE MANAGER.**

**CALL/COME IN TO
KELLY
SERVICES**

1099 N. Meridian—834-3600
8777 Purdue Road (Xerox
Building)—872-4100

- *pregnancy alternatives through first trimester
- *procedural counseling
- *male & female sterilization
- *general anesthesia available

24-HOUR POST OPERATIVE EMERGENCY
ANSWERING SERVICE TOLL FREE 1-800-742-9029

5626 E. 16th St. Indpls IN 46218

adjacent to Indianapolis Community Hospital

"LORG ABNAML UD ZEMBLAG. REMPLO PLIVOB IVWI SUBZILY OG ABNAML. AND LESS."

Blorg
Famous Ex Space Monster



EVERYTHING YOU ALWAYS WANTED
IN A BEER. AND LESS.



EARN \$300-\$400 per week!!!
Join America's largest cruise line
operating on the Mississippi River and
East Coast. Need hard working, reliable
individuals. Positions available for
stewards, deckhands, and galley
help. Great opportunities to earn money
anytime during the year.
— IMMEDIATE OPENINGS —
Enjoy traveling and seeing the country
while living on board ship.
— SHORT TERM EMPLOYMENT
AVAILABLE —
Call Now!! 202-345-4507

**AMERICAN
CRUISE LINES INC.**
HADDAM, CONNECTICUT 06438

Learn to live with someone
who's living with cancer.
Call us.

AMERICAN CANCER SOCIETY



Remember One
**ONE MONTH
FREE RENT**

Affordable waterfront apartments
Two indoor tennis courts
Indoor pool and physical
fitness center
Day Care Center
Whirlpool, sauna
and fitness trail
Just 10 minutes south of downtown
Just 1-2 to the harbor lot.
Type 1-2 to the harbor
lot in front of the 1st 1st mile
Daily 10:00 - 10:00
Sundays 12:00-4:00

786-9291
R Revel Companies Inc.
Marketing & Management