

FFA

NEWSLETTER

Alumni Association



SPRING - 1987

SPONSORED BY: RHONE-POULENC INC. Agrochemical Division

THE HUMAN CROP . . .

By Larry Reese, National FFA Alumni President
Tallahassee, Florida



Quality pack, uniformity and consistency of product, and consistent labeling . . . the vegetable industry uses these terms to define characteristics deemed important in the "salad bowl industry" of the United States. Most of us know where lettuce, tomatoes, tangy "three bean salad" and alfalfa sprouts come from. Sure we do. They come from the garden, but not just any garden and not just any time.

Ninety thousand truck loads of produce are consumed in these United States . . . per day. One would predict a premium for these products, especially in the winter when only the South can produce (no pun intended) those delicious morsels so in demand on the salad bars of the world.

Within forty-eight hours from shipment in Florida, a worker in New Jersey can be unloading a semi-truck bearing 2,000 flats of strawberries worth fifteen dollars per flat--\$20,000 of someone's money. The blueberry people tell me they stop picking when the price drops to nine dollars per twelve pound

flat. Tomatoes leave in twenty pound boxes worth fourteen dollars per box on trucks loaded with 1,600 boxes--\$22,000 per truck.

Plant breeders and those in the know talk about "putting legs" on produce. Every day added to the life of these extremely perishable products increases the possibility for a profit. These perishable loads are affectionately called "dynamite" by the truckers who haul them. It is certainly a shame to see watermelons literally dripping out the back of a refrigerated truck after only thirty-six hours of interstate hauling. Lettuce grown with too much nitrogen and forced to take in too much water breaks down in much shorter time than the fourteen days necessary to find a place on someone's table 1,700 miles from where it was grown. Quality pack, uniformity of pack, and consistent labeling . . .

I have recognized one label consistently packing only the finest. For fifty-nine years the uniformity, consistency and quality produced by one organization stands out among all others. Over 435,000 units were produced by this organization last year and each unit comes wrapped in a distinctive blue and gold cover. The crop is grown in fifty states and seems to hold up regardless of the climate. The shelf life of this product; however, is far from infinite. The most valuable of all resources, this crop is a human crop, harvested from the cities, homes and farms of mothers and fathers across America.

Let us take care to remember where this human crop came from and where it is going. More importantly, as Alumni members, let us not lose sight of our grand mission: to assist, aid, foster support for, and be examples to over 8,000 FFA chapters and vo-ag departments across America. Nurture them. Help "put legs" on the FFA . . . please.

MEMBERSHIP PROMOTION AWARDS

The National FFA Alumni will award the following at the 1987 Convention in November. We hope you and your state will be included with this year's list of winners.

1. The Legion of Merit Award is presented to any individual signing up ten or more new members, or five Life members, or five Executive Sponsors. Applications must be received by October 15.
2. Scholarships, valued at \$300.00 each, will be presented for the 1988 Washington Conference Program. States will receive one scholarship for every 500 active members. Local affiliates will receive one scholarship for every 250 active Alumni members or for 100 Life members.
3. Each state increasing by at least 50 members receives a special Alumni blazer for their president or a selected individual. Memberships determining blazer recipients must be received by the National Office by October 1.
4. Plaques, indicating growth percentage, will be given to states increasing their 1986 membership.
5. Plaques will be awarded to states where FFA Alumni membership reaches 25%, 50%, 75%, or 100% of FFA membership. At the time FFA Alumni membership equals 100%, a check for \$1.00 per member will be presented to the state.
6. Plaques will be presented for the most Life members in a state, most Life member affiliates in a state, most Life members in a local affiliate, and most FFA Alumni members in an affiliate.

LEADING EDGE PRODUCTS COMPANY DONATES COMPUTER

The Leading Edge Products Company donated a Model D, fixed drive computer and software for use at our national office. The computer will greatly improve our office's efficiency. This contribution was made possible by the National FFA Foundation.

CONTACTING YOUR LEGISLATOR

Vocational education in agriculture must receive our continued support. We encourage each FFA Alumni member to contact their state and national representative at least one time a year. These governmental leaders should be encouraged to continue appropriation funds for vocational education in agriculture for high school, post secondary, and adult educational areas.

Personal visits are the best way to show your interest. Visits should be brief and to the point. State your opinions and thank the Congressman or Senator for his time and commitment to young people and education.

Telephone calls are also very effective. When calling, identify yourself, your FFA Alumni affiliation, and your support for FFA and vocational agriculture. Ask their opinion of vocational education in agriculture and their commitment to appropriating funds for the program. All calls are noted even if you just speak with a staff member.

Letters are also very important. The letter should be brief, logical, and to the point. Identify your reason for support and ask for their commitment of support for vocational education in agriculture and its funding. Avoid threats such as "I won't vote for you unless. . ." Ask for the legislator to define their position on an issue. Sign your full name and address. The salutation should read "Dear Senator" or "Dear Mr./Ms. for a Congressman/Congresswoman." The envelope and inside address in all cases should read "The Honorable."

A visit, telephone call, or letter of support for vocational agriculture/FFA during 1987 is very important. Please send a note to the national office listing your contacts. Your contacts will make a difference in the future of vocational education in agriculture.

ALUMNI TOUR OF EUROPE SCHEDULED THIS SUMMER

The National FFA International Department recently announced a special 14-day European travel seminar for FFA advisors and FFA Alumni members. The seminar will cover five European countries and give a first-hand view of farms and agribusinesses. The 1987 tour will begin in Washington, DC, on June 30, and will return to Washington on July 13, 1987.

The \$1,775.00 per person fee includes most meals, all lodging, air transportation to Europe and transportation throughout the tour, guides and interpreters, city sight-seeing, entrance fees and all tips and taxes.

Other tour highlights include a visit to the Royal Agricultural Show in Coventry, England, the Eiffel Tower in Paris, a journey down the Rhine River in Germany, and American WWII cemeteries in Luxembourg. Plus, tour participants will get an inside look at European lifestyles by visiting with farmers from many of these countries.

Those who wish to participate should contact the FFA International Department immediately, because passports and other documents must be obtained prior to departure in June. If you're interested and want more information, contact the FFA International Department at 703-360-3600.

NATIONAL COUNCIL NOMINATIONS

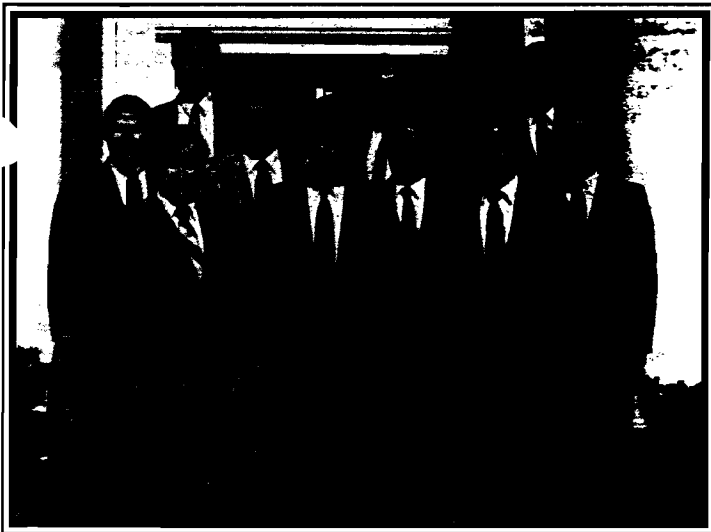
The Member-at-Large position on the National FFA Alumni Council will become vacant at this year's convention when Randy Meyer completes his three-year term. The National Council will review state nominations in July and develop a ballot of two names for voting by the delegates at the convention. All interested Alumni should contact their state FFA Alumni president. All applications have to be approved and signed by the state Alumni president and received in the National Office by July 1.

SPECIAL FFA ALUMNI INTRODUCTORY LUGGAGE OFFER

The FFA Supply Service has announced the sale of a three-piece carry-on luggage set with the FFA Alumni patch on each piece for a special price of \$39.95. This is a nationally advertised \$69.95 Oxford Nylon luggage set. The set has a 44" full-size three-suit garment bag, a four-zipper large 18"x12"x12" boarding case, and a personal grooming kit. The special price is available for a limited time. Orders should include a \$2.25 handling charge and be mailed directly to the FFA Supply Service, 5632 Mt. Vernon Memorial Hwy., P.O. Box 15160, Alexandria, Virginia 22309.

1986-87 NATIONAL FFA ALUMNI COUNCIL

Larry Reese, President National FFA Alumni Association Department of Agriculture 414 Mayo Hall Tallahassee, FL 32301	Raymond Cockburn Western Region Rep. Rt. 2, Box 159 Cuba, OK 73044	Tom Parker NVATA Rep. Box 943 Torrington, WY 82240
Rick E. Metzger, V.P. National FFA Alumni Association 1200 Pleasant Street Tallahassee, FL 32301	Richard Meyer, V.P. National FFA Alumni Association 1200 Pleasant Street Tallahassee, FL 32301	Rick Mann East National FFA President Rt. 3, Box 109 Winchester, VA 22601
David Marking, Secretary National FFA Alumni Association 1200 Pleasant Street Tallahassee, FL 32301	William H. Smith, Treasurer National FFA Alumni Association 1200 Pleasant Street Tallahassee, FL 32301	William H. Smith National FFA President Rt. 3, Box 109 Winchester, VA 22601
James S. Smith Central Region Rep. Box 225 Green Bay, WI 54301	William H. Smith National FFA President Rt. 3, Box 109 Winchester, VA 22601	Larry Case National FFA Advisor Box 15160 Alexandria, VA 22309
	Robert W. Cox Executive Director National FFA Alumni Assoc. Box 15058 Alexandria, VA 22309	



The planning committee for the State Leaders Conference and State FFA Alumni Presidents Conference met in March at the FFA Center. Pictured front row (l-r): Gary Maricle, FFA Alumni Conference Chairman, Nebraska; Rodney Kelly, Kentucky; Ron Crawford, Washington; second row (l-r): Tony Hoyt, FFA Leadership Specialist; Bob Juncker, Indiana; John Grover, New Jersey; Jay Eudy, Texas; and back row (l-r): Robert Cox, Alumni Director; Bob Seefeldt, State Leaders Conference Coordinator; and Coleman Harris, FFA Executive Secretary. The theme for the 1987 conferences will be "Adjusting For the Future."

FFA ALUMNI PRESIDENTS CONFERENCE

The first State FFA Alumni Presidents Conference is scheduled for July 27-31 in Washington, DC, and is sponsored by Philip Morris, Inc. as a special project of the National FFA Foundation. The conference will be held during the same week as the State FFA Presidents Conference and the Conference for State Leaders of Vocational Agriculture Education. Highlights will include meeting with President Reagan, attending a congressional luncheon, and visiting with senators and representatives at the Capitol. The group will have five Alumni workshop sessions, a cookout at the FFA Center prepared by Virginia Pork Producers, a trip to the Philip Morris factory in Richmond, Virginia, a night tour of Washington, DC, and a visit to Mount Vernon. Participants of the three conferences will attend joint sessions, meal functions, and a banquet.

Any FFA Alumni member is welcome to attend the State FFA Alumni Presidents Conference for this exciting week. The registration fee will be \$175.00 and will include conference materials, all meals (except Wednesday evening), and local transportation. A special contract has been arranged with Eastern Airlines for 60% off normal rates, and a special room rate of \$55.00 plus tax for a double bed room has been arranged at the Twin Bridges Marriott. All state FFA Alumni presidents will receive a reimbursement for a major portion of their conference expenses.

For more information, contact either Gary Maricle, National Workshop Chairman, at 402-564-8519 or the National Alumni office at 703-360-3600. (Note: Local Alumni members may wish to bring students to the FFA Washington Conference Program and participate in the State Alumni Presidents Conference.)

DENMARK FFA ALUMNI PURCHASES VAN FOR FFA



The Denmark FFA Alumni purchased a new 1987 GMC 12-passenger van for the Vocational Agriculture/FFA Department at Denmark High School, Denmark, Wisconsin. Shown from left are: Amy Dobesh, Denmark FFA President; Al Mazna, Denmark FFA Alumni President; passing the keys to District Administrator James Renier. The purpose of the Denmark FFA Alumni is to support and promote the FFA organization, FFA activities, and vocational agriculture on the local, state, and national levels. Ron Piontek, local Life member, did the extras on the van which included the painting, decal package, insulating and aluminum running boards while another Life member, Hub Hermans, decked the inside with blue carpeting.



"Consider building into your estate plan a tax-deductible gift or bequest to the FFA Foundation."

Eddie Albert

Planning for Your Future? Think of FFA.

Wise financial planning that includes "planned gifts" can help to maximize benefits from your real estate and other assets for you, your family and the FFA. Benefits like:

- Tax-free sale of appreciated property, such as farmland
- Increased income
- Income for life
- Immediate income tax deductions
- Perpetual support for your favorite area of FFA

FFA develops young people into skilled, self-confident leaders... a vital need for America today!

Learn how you can plant the seeds of FFA's future while also reaching your own financial objectives. Call or write today for a free brochure on FFA planned giving programs.

Write to:

National FFA Foundation
P.O. Box 5117
Madison, WI 53705-0117
or Call Collect 608/238-4222



PICKUP RAFFLE - HUGE SUCCESS

A little imagination, a positive attitude, and a lot of hard work paid off for the Lakeview FFA Alumni and Young Farmers Chapter recently. With a little push from their advisor, the two groups entered into a big undertaking by raffling off a Ford Ranger "S" Pickup. The even better part was that the advisor was gone for the week prior to the big event, and everyone pitched in to make this one of the most successful social and financial events for both organizations ever held.

Two-hundred forty-two (242) raffle tickets were sold at a donation of \$50.00 per ticket. With each ticket, the purchaser received two free steak dinners, a free dance, a chance at ten second prizes (each valued at \$100.00 or more), and above all a chance at the Grand Prize--a Ford Ranger "S" Pickup!

Even with slippery roads and snow falling, a band was set up and tables and food were prepared. Over 400 persons were served a 14 oz. New York strip steak with all the trimmings. Songs followed by dance music led up to the exciting 9:00 PM drawing.

The first ticket drawn was the pickup. However, that ticket was sealed in an envelope and announced last. The other ten second prize winners were drawn and won prizes such as a 13" Color TV, Gas Grill, Compact Microwave, Patio Glider, 35mm Camera, Automatic Rifle, Warmer/Cooler, \$100.00 Savings Bond, \$100.00 Shopping Spree, and a Weekend Extravaganza at a local motel.

Finally, the winner of the pickup was announced. The winner, a very surprised, shocked and happy Dan Donaghue, accepted the keys to his new pickup.

Both organizations have voted for this to be an annual event with the drawing to be held the first Sunday of December. Lakeview will be happy to sell you a ticket in 1987.

FFA
LEADERS
FOR THE NEW FIELDS
OF AGRICULTURE

NATIONAL PRESIDENT ATTENDS WISCONSIN CONVENTION

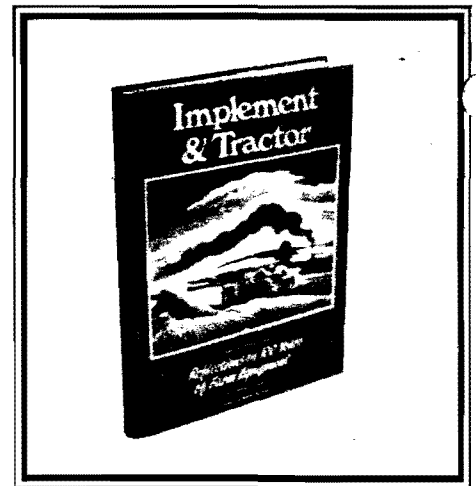
Larry Reese recently attended the Wisconsin State Alumni Convention . . . more people there than at a national Alumni convention! It was good to be in such a positive place. If we could add your spark of enthusiasm to our National Alumni Organization, we would be light years ahead. Commendations are certainly in order for amassing a state organization with over 20% of the national membership. Thanks for inviting me!

FFA COMPUTERS IN AGRICULTURE SEMINAR

This year's 1987 National FFA Computers in Agriculture Seminar is scheduled for the week of August 8-12 at the Sheraton National Hotel in Washington, D.C. The national seminar is designed to recognize all state Computers in Agriculture award winners along with the top five national winners. The seminar and award winners are sponsored by AgriData Resources, Inc. of Milwaukee, Wisconsin.

In addition, the 1987 seminar is open to ALL FFA members, Chapter Advisors, State Supervisors and Teacher Educators interested in learning more about computer technology in agriculture. This year's seminar will feature "hands-on" computer activities with special workshops covering the Ag Ed Network, desktop publishing, digitized graphics, classroom-computer based activities, computerized career session, individual FFA member and chapter computer activities as well as agribusiness and farm management programs. The cost for FFA members is \$250.00 which includes four nights lodging, bus tours, meal functions, including congressional awards banquet and seminar. Cost for Advisors, Alumni, State Supervisors, and Teacher Educators will be \$175.00 plus lodging. Rooms are \$57.75 per night for single or double occupancy. Contact the National FFA Center if your FFA Alumni Affiliate is interested in attending or contact your local FFA chapter to be an Alumni sponsor.

SPECIAL OFFER



A new publication entitled, "Reflections on 100 Years of Farm Equipment" is being offered for \$35.00 by the National FFA Alumni. The publisher will provide a 25% discount to local or state groups wishing to sell this outstanding new farm equipment history as a money raising project. To order or receive more information, write the National FFA Alumni, P.O. Box 15058, Alexandria, Virginia 22309.

ACCESS

ACCESS, a membership service for agricultural education operated by the National FFA Supply Service, may be a program that you as an alumnus would like to sponsor for your local school or FFA Chapter. ACCESS is a special computer software subscription service aimed at agricultural education and the local agricultural instructor but provides service for FFA members, local and state Advisors, Alumni, FFA Chapters and agricultural education in general. An ACCESS membership provides for software preview, educational software reviews, computer software at special educational prices and a one year subscription to the ACCESS-INTERFACE newsletter. By offering ACCESS as a special subscription service, FFA is able to provide a valuable and needed service to agricultural education at a low cost. At the same time, ACCESS will be self-supporting in addition to providing support and assistance to the overall FFA Organization. (See ad for further information on what ACCESS can do for you, and other FFA and agricultural affiliates in your area.)

FFA ALUMNI SALUTES THE EXECUTIVE SPONSORS

Since our Winter 1987 newsletter, the following have contributed \$100.00 or more as Executive Sponsors of the FFA. The number of years of contributions is listed in parentheses. We encourage each Alumni to become an Executive Sponsor. For more information, write the National FFA Alumni office.

H. B. Flora (1) Birmingham, AL	John Crystal (1) Scranton, IA
Gerald E. Jehle (5) Birmingham, AL	Bill Kelsey (7) W. Des Moines, IA
G. D. Schumacher (4) Tucson, AZ	Richard D. Meyocks (2) Fairfax, IA
J. A. MacDonald (3) Winnipeg, CN	Bill Muasell (6) Cedar Rapids, IA
Victor A. Rice (8) Ontario, CN	Dr. Owen Newlin (14) Des Moines, IA
Donald W. Wittnam (2) Greeley, CO	M/M F. W. Thorne (6) Davenport, IA
Kenwood C. Nichols (2) Stamford, CT	Cliff Wilson (1) Conrad, IA
Donald Staheli (11) New Canaan, CT	Donald H. Zarley (13) Des Moines, IA
Milan J. Turk (1) Fairfield, CT	Emmett Barker (3) Deerfield, IL
Bart Gordon (1) Washington, DC	M/M Homer Edwards (10) Hinsdale, IL
Sen. Albert Gore (1) Washington, DC	Jim Guilinger (10) Sycamore, IL
James Sasser (1) Washington, DC	Richard Holtkamp (2) Rochester, IL
Larry & Susan Reese (2) Quincy, FL	Alvin J. Huss (1) Evanston, IL
W. D. Brink (6) Marietta, GA	DonMcGillivray (3) Bloomington, IL
Paul G. Brower (7) Atlanta, GA	John Pool (8) Thawville, IL
Olin Andrews, Jr. (4) Des Moines, IA	Vaughn Bryson (4) Indianapolis, IN
James Cornick (6) Des Moines, IA	Wm. Jensen (8) Shawnee Mission, KS

Charles Johnson (11) McPherson, KS	John S. Runnells (8) Bay City, TX
M/M P. Kingston (8) Washington, KS	David G. Smokler (2) Lancaster, TX
Rex Parsons (3) Overland Park, KS	J. Paul Taber (13) Houston, TX
Earl R. Sorensen (10) Fennville, MI	M/M J. Campbell (9) Rockville, VA
M/M Armstrong (3) Apple Vly, MN	M/M W. Carnes (7) Alexandria, VA
Allen A. Housh (5) Edina, MN	M/M L. Case (2) Fredericksburg, VA
W. J. Kortessmaki (1) New Hope, MN	Erika Freeman (4) Alexandria, VA
New Ulm Alumni (3) New Ulm, MN	Lennie Gamage (7) Fredericksburg, VA
Brian Roth (2) Burnsville, MN	John Hillison (2) Blacksburg, VA
Robert G. Wells (3) Austin, MN	Anna Hitchcock (1) Alexandria, VA
M/M N. Galle (10) Kansas City, MO	H. N. Hunsicker (11) McLean, VA
M/M Roy Smith (5) Memphis, MO	Charles Stenholm (2) Arlington, VA
Charles R. Gibson (2) Jackson, MS	Leslie L. Thompson (6) Fairfax, VA
Dr. Mary D. Chilton (1) Raleigh, NC	Timothy L. Bailey (1) Madison, WI
John Mullins, Jr. (3) Greensboro, NC	Denmark Alumni (3) Denmark, WI
Eugene R. Dahl (13) Fargo, ND	M/M F. Doering (10) Madison, WI
Ozzie S. Gilbertson (6) Lincoln, NE	Kim A. Havens (7) Middleton, WI
M/M B. E. Gingery (9) Lincoln, NE	Hub Jauquet (4) Luxemburg, WI
Dr. Ted D. Ward (10) Lincoln, NE	William Knox (7) Fort Atkinson, WI
Philip Alampi (7) Titusville, NJ	Eugene A. Kroupa (3) Madison, WI
Glenn E. Edick (12) Cazenovia, NY	Eugene C. Meyer (3) Ft. Atkinson, WI
Edward J. Hartnett (3) Syracuse, NY	Timothy J. Novak (5) Green Bay, WI
Forest Loudenslager (14) Marion, OH	Roy Reiman (2) Greendale, WI
Lee Alexander (7) Philadelphia, PA	Ken & Mary Seering (6) Denmark, WI
George C. Delp (7) Lancaster, PA	Bernard L. Staller (10) Middleton, WI
William Donohue (2) Malvern, PA	L. Wm. Templeton (9) Milwaukee, WI
Ned Ray McWhorter (1) Nashville, TN	Roy W. Uelner (14) Brookfield, WI
Howard C. Morrison (10) Austin, TX	M/M R. Wolfe (5) Brodhead, WI

WELCOME NEW LIFE MEMBERS

Since our winter newsletter, our prestigious list of Life members has grown by 156 and has reached a total of 6,853. A Life member receives the FFA magazine and may designate that upon their death a \$100.00 check be presented as a memorial scholarship to a FFA member in a chapter or state of their choice, or may be designated to support some area of agriculture and/or vocational agriculture education. We salute our Life members.

Glen C. Shinn Starkville, MS	Paul Mleziva Denmark, WI
Fred Oomens Platteville, WI	Jay Jauquet Luxemburg, WI
Duane Watkins Thermopolis, WY	JoAnne Jauquet Luxemburg, WI
Thomas L. Weber Sarasota, FL	David S. Derr Sun Prairie, WI
Norman Jacobson Missoula, MT	John Hornung Sun Prairie, WI
Glenn D. Luedke Woodbridge, VA	Dennis Jesberger Sun Prairie, WI
Paul M. Day Northfield, MN	Lloyd Klein Sun Prairie, WI
Charles W. Byers Lexington, KY	Rudy Wieland Sun Prairie, WI
Duane Houge Slater, IA	Nancy Funk Rubicon, WI
Wayne Nattress Runnells, IA	Bernard Bain DePere, WI
David J. Mugler Manhattan, KS	Bernard Linssin DePere, WI
Ray Merrell Saint Edward, NE	Bill Rueden DePere, WI
Allen Hall Albion, NE	Tony Rueden DePere, WI
David E. Mayer Elida, OH	Henry Rueden DePere, WI
George Emmerich Sturgeon Bay, WI	Judy Abel Pulaski, WI
Larry Jeanquart Sturgeon Bay, WI	Jean Hinkfuss Bonduel, WI
Robert A. Niederman Hamilton, OH	Ron Hinkfuss Bonduel, WI
Walter C. Burcroff Goshen, CT	Joyce Natzke Bonduel, WI
John Abell Teutopolis, IL	Kenneth Natzke Bonduel, WI
Doris Lenhart Keymar, MD	Sandra Staszak Bonduel, WI
Rodney Evans Homer, MI	Bill Gauger Denmark, WI
Jay Landis Homer, MI	Darlene Gauger Denmark, WI
Keith E. Eulinger, Jr. California, MO	Dave Gauger Denmark, WI
Steve A. Brown Jefferson City, MO	Ruth Novak Luxemburg, WI
Jim D. Bellis Aurora, MO	William Novak Luxemburg, WI
Terry Heiman Holts Summit, MO	Bernard Sloma Denmark, WI
Marvin Hemminger Graytown, OH	James Wacek Denmark, WI
Bobbie Butler Bryan, TX	Joyce Wacek Denmark, WI
James Fauver Mt. Alto, WV	Shawn Kane Denmark, WI
Jon Beyer Luxemburg, WI	Donald Kapinos Denmark, WI
Larry Dufek New Franken, WI	Jenny Nowak Maribel, WI
Dan Mleziva Luxemburg, WI	Brian Christensen Denmark, WI
David J. Mleziva Luxemburg, WI	Denise Retzloff Fond du Lac, WI
Michael A. Mleziva Green Bay, WI	Paul Ossmann DePere, WI

Judy Heeg Marshfield, WI	Dale Maurer Madison, WI
Joe M. Connors Verona, WI	Adrian Miller Verona, WI
Randy Docken Mount Horeb, WI	Richard Schwenn Verona, WI
Susan Docken Mount Horeb, WI	Kim Maurer Madison, WI
Dawn Haag Mount Horeb, WI	Donald Richter Watertown, WI
Virgil Haag Mount Horeb, WI	Gerald G. Brown Belleville, WI
Bob Kellesvig Mount Horeb, WI	Jannett E. Brown Belleville, WI
Gordon Lamberty Cross Plains, WI	Yvonne Brown Belleville, WI
James Lamberty Cross Plains, WI	Delmar Plunk Alma, WI
Roger Ringenberg Verona, WI	William Mueller Wausau, WI
Marsha Kellevig Mount Horeb, WI	Paul Gilster Bangor, WI
Martin VanLishout Reedsville, WI	Tom Merten Chilton, WI
Joyce Wyatt Hydro, OK	Patrick Steiner Jersey City, NJ
Rick Shriner Junction City, OH	Warren Behm Shawano, WI
Frank Fugitt Morton, MS	Mrs. Richard Dillenburg Shawano, WI
Dwight J. Goforth Olin, NC	LeRoy Raddant Shawano, WI
Lyle G. Vogt Olivet, SD	Curt Retzlaff Shawano, WI
Gayle Roberts Hill City, KS	Dean Dillenburg Shawano, WI
Dennis Hobbs Springfield, MO	James Teskey Shawano, WI
Jerry Crowmover Springfield, MO	Ron Sahu Spencer, WI
Edde W. Lindsey Springfield, MO	Delores Gabler Augusta, WI
Timmy D. Arledge Rockdale, TX	Robert Gabler Augusta, WI
Warren Patnode Arkansaw, WI	Margaret King Cadott, WI
Manion Hutter Arkansaw, WI	James Fitzgerald Newton, WI
Judy Bergum Blair, WI	James Wendt Waukesha, WI
Robert Tenneson Blair, WI	Andrew Weber Newton, WI
Diane Marquardt Cambria, WI	Ron Kissinger Newton, WI
Lyle Mercer Fort Atkinson, WI	John Binversie Kiel, WI
John Vizeika Oconto Falls, WI	Terry Geurink Rothschild, WI
Harold Seebecker Mauston, WI	Jack K. Turner Buckeye, AZ
Rose M. Mitchell Lyndon Station, WI	Barbara Malpiedi Garner, NC
Don Cutler New London, WI	Dean E. Cook Marysville, OH
Kenneth Paul New London, WI	Ivan Johnson Stitzer, WI
Rob Stone Ripon, WI	Christena Stevenson St. George, KS
Sheri Bohnhoff Plymouth, WI	Allene V. Yearwood Evensville, TN
Bob Dickman Sheboygan Falls, WI	Jonnie Beene Evensville, TN
Darryl Otman Sheboygan Falls, WI	Darlene Tollett Evensville, TN
Gary Perronne Sheboygan Falls, WI	Lebron Purser Evensville, TN
N. Perronne Sheboygan Falls, WI	David Dunn Evensville, TN
Pam Pederson Junction City, WI	Jennifer Cawood Evensville, TN
Robert E. Isherwood Plover, WI	Donnie King Evensville, TN
Thomas Brunner Verona, WI	Beth Johnson Evensville, TN
Clifford Gust Verona, WI	Donna A. Jones Evensville, TN
Joyce Gust Verona, WI	Chuckie Pugh Evensville, TN
Russell Gust Verona, WI	

ACCESS



"ACCESS is a unique service which will help FFA members and agricultural teachers utilize the latest information management technology for meeting the challenges in modern agriculture."

... Dr. Larry Case, National FFA Advisor.

Operated by the National FFA Supply Service, ACCESS will provide you with:

- A Software Preview Library.
- Educational Software Reviews.
- Computer Software at Special Educational Prices.
- A one year subscription to the ACCESS-INTERFACE newsletter.

ACCESS offers software from the leaders in the agricultural computer industry including AgDisk/Harris Technical Systems, Control Data Corporation, Red Wing Business Systems, Harvest Computer Systems, Midwest Agribusiness Services, Small Business Computer Systems, Agri-Comp, Specialized Data Systems, AgPac, Hobar Publications, Photocom Productions, DOW Chemical USA.

To help decide what's best for you, ACCESS provides software reviews written by agricultural teachers. More importantly, ACCESS membership offers you the valuable opportunity to preview software prior to purchase, so you know what you're buying.

Enjoy your new agricultural computer software connection immediately. Check out a particular software selection from the ACCESS Preview Library. Or make an immediate purchase and take advantage of the special educational discounts available only to ACCESS members.

Also receive the ACCESS-INTERFACE newsletter containing helpful hints, ideas from other ag teachers, new software and computer news in ag education.

ACCESS is only \$45.00 per year. This membership fee covers:

- Preview Library Software listings and request forms.
- ACCESS Software Review Directory.
- Educational Software Reviews.
- ACCESS discount Software Catalog and order forms.
- An introductory copy of the ACCESS-INTERFACE newsletter.

Everyone associated with agricultural education may join ACCESS. FFA members, high school agricultural instructors, state ag education staff, teacher educators, postsecondary instructors and FFA alumni members to name just a few.

For more information, write to:
ACCESS, National FFA Supply Service,
5632 Mt. Vernon Memorial Highway,
P.O. Box 15160,
Alexandria, VA 22309-0160.



MEMBERSHIP APPLICATION

ACCESS

Operated by the National FFA Supply Service

5632 Mt. Vernon Memorial Highway
P.O. Box 15160
Alexandria, VA 22309-0160

Telephone: (703) 360-3600
To Place Orders: (703) 780-5600
StarGram: FF150A
Telex: 89 9121

Name: _____ Chapter ID #: _____
School: _____
Address: _____
City: _____ State: _____ Zip+4: _____
School Phone: (_____) _____ - _____ Application Date: _____

Yes, I want to become a member of ACCESS. Enclosed you will find either a purchase order or my check made payable to ACCESS for \$45.00. I understand that my one-year membership provides:

- Access to the Preview Library.
- Access to Educational Software Purchase Discounts.
- An ACCESS Membership Notebook and Materials.
- An ACCESS Software Review Directory and Software Reviews.
- A one-year Subscription to the **ACCESS-INTERFACE** Newsletter.

Yes, I want to preview software from the ACCESS Preview Library:

I've included \$20.00 (along with my membership fee) to put into my ACCESS postage account.

I plan to use the library more frequently, so I've enclosed \$_____ in addition to the \$20.00 minimum deposit. (I understand that any unused amount can be carried over to next year, used for next years membership, or applied toward a software purchase).

1. Please check which best describes your role in agricultural education:
 ___ high school ag teacher ___ state ag ed staff ___ teacher educator ___ FFA member
 ___ postsecondary instructor ___ FFA alumni member ___ young adult farmer ___ other: _____
2. Which brand(s) of computer do you use:
 ___ Apple II+ ___ Apple IIe ___ Apple IIc ___ Apple Macintosh
 ___ IBM Monochrome ___ IBM color/graphics ___ IBM compatible: _____
 ___ TRS-Radio Shack (specify model): _____ ___ Other (specify): _____
3. How many computers do you have access to for use as a part of your instructional program? _____
4. How many years have you worked with computers? _____
5. Do you have a phone modem? ___yes ___no Do you subscribe to the Ag Ed Network? ___yes ___no
6. If you are an instructor, how many students are enrolled in your program? _____

I agree to abide by the ACCESS Code of Ethics and will not duplicate copyrighted software.

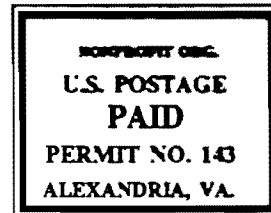
Signed: _____ Date: _____

Return signed application and check or purchase order to ACCESS, National FFA Supply Service, 5632 Mt. Vernon Memorial Hwy., P.O. Box 15160, Alexandria, VA 22309-0160.



NEWSLETTER

FFA ALUMNI ASSOCIATION
P.O. BOX 15058
ALEXANDRIA, VA. 22309-0058



RHÔNE-POULENC INC. AGROCHEMICAL DIVISION

Monmouth Junction, New Jersey 08852 - Telephone: (201) 297-0100

As a special project of the
National FFA Foundation

*Manufacturer of BUCTRIL® herbicide,
MOCAP® insecticide and other fine
Agrochemicals.



NEWSLETTER

PLEASE FORWARD

THE DAWN OF A NEW ERA IN AMERICAN AGRICULTURE.

Today it's easy to have doubts about the future of U.S. agriculture. But at Rhone-Poulenc we see the dawning of a new and challenging era in this great nation's farmland. One that seeks a commitment from both Future Farmers and Rhone-Poulenc—to help keep American agriculture the most productive in the world.

We're continuing to work toward this goal by increasing

our service to the agribusiness community. By introducing effective tools like Buctril® corn herbicide, Tackle® soybean herbicide, as well as Aliette® and Rovral® fungicides. And by devoting our finest research efforts to discovering environmentally safe chemicals for the American farmer.

It really is the Dawn of a New Era for both of us. Your future and ours are closely linked.

Rhone-Poulenc and the Future Farmers of America—committed to a new era in American agriculture.



Buctril®, Tackle®, Aliette® and Rovral® are registered trademarks of Rhone-Poulenc Inc.