

# UPDATE

Vol. XXXIII, No. 7  
C. Coleman Harris  
U.S. Department of Education  
July 2003

---

## DATES TO REMEMBER

### July

- |       |   |
|-------|---|
| 13-15 | National FFA Board of Directors meeting, FFA Center, Adam's Mark Hotel, downtown Indianapolis |
| 15    | National FFA Foundation Board of Trustees meeting, Adam's Mark Hotel, downtown Indianapolis   |
| 15    | Proficiency award applications due, FFA Center  |
| 15    | Agri-Entrepreneurship applications due, FFA Center  |
| 15    | MFE/ALD/EDGE information forms due, FFA Center  |
| 22-27 | The National FFA Alumni Association's 2003 State Leaders Conference, Corpus Christi, Texas    |

- |        |    |  |
|--------|----|--|
| August | 1  | National FFA Officer Candidate applications due, FFA Center    |
|        | 16 | FFA Race Day, Michigan International Speedway, Brooklyn, Mich. |

---

## WHAT'S HAPPENING AT FFA

**Start planning your trip to D.C.!** The Washington Leadership Conference (WLC) begins with a series of six one-week learning laboratories in Washington, D.C., and expands into a yearlong online study of leadership, personal growth and career success for all participants. The action packed learning laboratories help members experience service learning and teaches them the fundamentals of mentoring and volunteerism strategies, problem-solving skills, relationship building skills and character development. In addition to the week in the nation's capital, the students participate in a yearlong program focusing on transferring the experiences and skills developed in the learning laboratories to practical applications in their local chapter and communities. WLC is hands on learning at its best. Participants take the knowledge gained at a national conference and apply it at the local level in their chapter, school, and communities. The Washington Leadership Conference consists of six weeks instead of seven this year. The remaining dates are: July 8-13 and July 15-20. The premier FFA leadership conference is shaping up to be the best yet! For more information e-mail [wlc@ffa.org](mailto:wlc@ffa.org) or call 317-802-4312. You can also visit [www.ffa.org](http://www.ffa.org).

**State Associations Need to Submit Delegate Issues by July 1:** Only issues submitted by state FFA associations will be considered at State Presidents' Conference for the National FFA Delegate Process. Each state can submit up to five issues. Please submit issues by July 1 to Seth Derner. (Please notify if issues will be submitted after July 1.) For information about the delegate process, please visit [http://www.ffa.org/convention/html/del\\_info.html](http://www.ffa.org/convention/html/del_info.html). Contact: Seth Derner, [sderner@ffa.org](mailto:sderner@ffa.org) or Tami LaMar, [tlamar@ffa.org](mailto:tlamar@ffa.org)

<mailto:tlamar@ffa.org>.

**Time Capsule at 2003 National FFA Convention:** State officers at State Presidents' Conference will receive instruction on guidelines for state submitted items to fill the time capsule at the 2003 convention. [See <mailto:See>](#) "Educator News" for the latest information on the time capsule and suggestions for recommended contents.

**National Judging:** The national judging of applications will be held July 27- July 31. Posting on the FFA website of the results will be as follows:  
July 29: The results of the "Stars Over America" national finalists judging will be posted.  
August 1: The results of the Proficiency national finalists judging will be posted.  
August 5: The results of the National Chapter and Agriscience judging will be posted.  
August 7: The results of the Agri-Entrepreneurship award judging will be posted.  
August 8: The results of the VIP, DSC, and H.O. Sargent awards will be posted.

**MFE/ALD/EDGE information forms due in July:** State information forms for hosting a MFE, ALD or EDGE conference are due by July 15, 2003. If you intend to host one or more of the personal growth and leadership conferences please complete the attached form for each conference and return them to April Pruet, [apruet@ffa.org](mailto:apruet@ffa.org) <mailto:apruet@ffa.org>, or fax 317-802-5256. If you intend to purchase the curriculum through the new delivery option please contact Andy Armbruster, [aarmbruster@ffa.org](mailto:aarmbruster@ffa.org) <mailto:aarmbruster@ffa.org>, or 317-802-4308.

**PALS Update:** This spring, we held a Train-the-Trainer workshop for the new PALS training material at the National FFA Center. The training focused on the following areas:

- How do you start and facilitate PALS programs?
- What are the benefits of PALS programs to FFA Chapters and Elementary teachers?
- What are the effects mentoring programs have on youth?
- How do you evaluate PALS programs?
- How do you incorporate healthy lifestyles activities into your PALS plan of action?
- How do you use the new materials in the CD-ROM format?

Representatives from 20 states, consisting of FFA advisors, FFA members, elementary teachers, administrators and counselors, were trained on how to help other teachers use the materials and start new PALS programs. State PALS Mentors will be training both students and teachers on the best practices in facilitating PALS programs throughout the summer. The PALS Training CD-ROM will also be available this summer. Thanks to the states who nominated trainers and are working with these trainers to get this information into the hands of students and teachers. Any state that was not able to send a representative to the training but would like to offer this training to teachers in an inservice setting should contact Tony Small, [tsmall@ffa.org](mailto:tsmall@ffa.org) <mailto:tsmall@ffa.org>, 317-802-4300, local program success manager.

Many of our state mentors have expressed an interest in traveling to other states to provide training where possible and we have travel dollars to support this effort. States with trainers in place are: Colorado, Delaware, Georgia, Indiana, Iowa, Kansas,

Michigan, New Mexico, New York, North Carolina, North Dakota, Ohio, Oregon, Pennsylvania, South Dakota, Texas, Utah, Vermont, Washington and Wyoming.

For more information on the PALS program please contact Christy McDaniel, [cmcdaniel@ffa.org](mailto:cmcdaniel@ffa.org) <mailto:cmcdaniel@ffa.org>, 317-802-4402, program coordinator, or Mike Honeycutt, [mhoneycutt@ffa.org](mailto:mhoneycutt@ffa.org) <mailto:mhoneycutt@ffa.org>, 317-802-4262, education specialist.

**National FFA Officer Candidate applications due August 1:** The 2003 National Officer Candidate Application is available on the private web page and the State Guide to FFA Activities. Each state received an e-mail containing the link to "Guide to the National FFA Officer Selection Process" in March. This web page is an excellent resource for study materials, hints, tips and tools for candidates to prepare for the interview process at convention. All applications must be submitted in hard copy format and postmarked by Aug. 1, 2003. Contacts: Kelly Horton, [khorton@ffa.org](mailto:khorton@ffa.org) <mailto:khorton@ffa.org>, 317-802-4248, or Kim Henry, [khenry@ffa.org](mailto:khenry@ffa.org) <mailto:khenry@ffa.org>, 317-802-4362.

**Electronic SPAM rears its ugly head.** We've mentioned false e-mails in the past, but it appears to be time for a reminder. Recently, State Staff representatives whose e-mail addresses are included in an FFA group list have received annoying e-mail messages that appear to originate from FFA. These e-mails are unsolicited, sometimes less-than-ethical electronic garbage, or SPAM. Unfortunately, the existence of search tools that deliberately harvest e-mail addresses from websites makes it far too easy for unscrupulous people to send thousands of unwanted e-mails and substitute legitimate addresses in the "Sender" line.

The National FFA Organization remains committed to protecting the security and privacy of its e-mails as much as possible, but cannot prevent every instance of e-mail harvesting due to the number of places (websites, ListServ) that e-mails may be legitimately available. As you may be aware, anti-spam legislation has been proposed more than once in Congress, but is proving difficult to define and make possible. Feel free to follow this debate as it continues. In addition, attached to this message you'll find a .PDF that explains just how easy it is to harvest and misuse these e-mails.

**FFA Race Day:** Come one, come all to the first annual FFA Race Day Aug. 16 at the Michigan International Speedway in Brooklyn, Mich., only two hours from Indianapolis. Enjoy an amazing day of racing and fun filled experiences including grandstand seats, a hospitality tent with lunch served and free pit passes to see the cars and NASCAR drivers up close. There will be prizes and educational demonstrations all day long. The race starts at 1:30. All this excitement for \$60 (a \$175 value). Proceeds will go to the State FFA Foundation where you are from and the National FFA Foundation. Just call 1-800-354-1010 and say you're with FFA. See flyer attachment for further details.

## **MERCHANDISE**

**Summer markdown sale:** Ready to shop for some great summer bargains? Visit <http://www.ffaunlimited.org/saleitems.html> to see the latest markdowns on popular FFA gear! Save up to 60 percent off selected gift items, logo wear and plaques.

**Official FFA Jacket special-\$7.50 off:** Deals like this don't come around that often.

Take advantage of it while it lasts! Take \$7.50 off each official jacket purchased online between July 1 and July 30. Enter the coupon code "ODSALE" at check out. Please forward this offer on to chapters so they can take advantage of this special promotion.

**How to get help with your FFA merchandise orders:** To place or modify an order, inquire about order fulfillment status or ask about the content of a single invoice, please contact the FFA call center by phone, 1-888-332-2668 or fax, 1-800-366-6556. To inquire about the financial status of your account or payments, please contact the FFA accounting office at 888-332-2668; request Accounting.

If you have an idea for improvements, need to escalate a situation or wish to make a complaint, please contact the customer service team leader, Sheridan Gilchrist, [sgilchrist@ffa.org](mailto:sgilchrist@ffa.org) <<mailto:sgilchrist@ffa.org>>, 317-802-4270. If she is not available, please leave a voice message; your call will be returned as soon as possible. The FFA customer service team is eager to serve you and resolve any issues you may have.

## **NATIONAL FFA CONVENTION NEWS**

**Delegate schedule for 2003 National FFA Convention:** With the National FFA Delegate Process starting at 10 a.m. on Tuesday (registration that morning from 7-10 a.m.), there are no official delegate activities on Monday at the 2003 National FFA Convention. Instead, a past National FFA Officer will be contracted to host activities for state FFA officers and other youth leaders (those serving as delegates). These activities will be completely optional; they will not be coordinated or sponsored by National FFA staff, and will be offered on a fee basis. The past national officer will be selected in the coming month and will send out a survey to state leaders to identify two or three activity options on that Monday. These options might include tours, workshops, meal functions, etc. Once arrangements are made, an order form will be sent to state leaders to sign up and pay for the activities in which they choose to have students participate. If you have questions about this new opportunity, please contact: Seth Derner, [sderner@ffa.org](mailto:sderner@ffa.org) <<mailto:sderner@ffa.org>>, 317-802-4413.

**2003 National FFA Convention Planning Info on [ffa.org](http://www.ffa.org):** Planning material, including housing information, is available at <<http://www.ffa.org/convention/index.html>>. The entire *Convention Planning Guide 1st Edition* is available on the site, as is housing information and preliminary convention schedules.

**Reminder: Convention registration fee set at \$30 and \$35 beginning in 2003:** The National FFA Board of Directors and National FFA Officers have set the national FFA convention attendance fee at \$30 for pre-registration and \$35 for on-site registration beginning in 2003. The action was taken to offset significant increases in costs for services, decoration, staging, labor and security. As a break-even activity, convention costs are borne by participants and not by general dues. Even with the approved increase, the \$30/\$35 FFA convention fee remains markedly lower than national meeting fees for other student organizations: VICA/Skills USA - \$90/\$100; FCCLA - \$100/\$110; and FBLA - \$85/95.

## **EVENTS**

**2003 CDE deadlines announced:** Deadlines have been set for the 2003 National FFA CDEs; all items are due to the FFA Center by the dates indicated. A copy of all forms listed below can be found in the 2003 State Guide. They are as follows:

July 10 - Team certification forms and certification fee due (\$25 per team, excluding dairy handlers)

- Waiver forms due (Please include with certification forms)
- Special assistance requests due (Contact: Alyssa Peterson, [apeterson@ffa.org](mailto:apeterson@ffa.org) <<mailto:apeterson@ffa.org>> 317-802-4263)
- State assistants/volunteers forms due
- State speaking judges forms due

Aug. 15 - Prepared public speaking manuscripts due

Sept. 15 - Agricultural communication portfolios due

- Agricultural issues portfolios due
- Job interview portfolios due
- Marketing plan portfolios due

Oct. 1 - Late membership payments and \$25 processing fee due (for qualification)

Oct. 15 - Add/Delete forms due

**New CDE Special Needs Request Policy:** Teams and individuals participating in the 2003 Career Development Events who feel that they are entitled to Special Needs Accommodations must submit a Special Needs Request Form. This form, along with additional information about the policy can be found on the following website: <http://www.ffa.org/programs/cde/html/cdeupdate.html>. Please make sure your national qualifying CDE participants and advisors are aware of this new procedure. The form must be submitted at the time of certification.

**Agriscience Fair application change:** There are changes to the Agriscience Fair program for 2003. There are two changes to the Agriscience Fair Rules: a) in team divisions, both members are required to be present for judging to qualify for placing and awards. b) rules for use of embryo subjects has been added to "Safety Rules." The only change to the application is the addition of the Agriscience Fair Certification Form. The revised application is attached. This form should be filled out completely, signed and submitted with the certification and abstracts by Aug. 15 to Christy McDaniel, National FFA Organization, 6060 FFA Drive, Indianapolis, IN 46268. For more information contact Christy McDaniel, [cmcdaniel@ffa.org](mailto:cmcdaniel@ffa.org) <<mailto:cmcdaniel@ffa.org>>, 317-802-4402.

## COLLEGIATE NEWS

**PAS website unveiled:** The National Postsecondary Agricultural Student Organization (PAS) can be visited on the World Wide Web. The new PAS web address is: [www.nationalpas.org](http://www.nationalpas.org) <<http://www.nationalpas.org>>.

## EDUCATOR NEWS

**Time Capsule Mission to FFA Associations:** Twenty-five years from now, what will FFA members and advisors want to know about FFA in 2003? As state staff and state officers, the National FFA Organization asks you to lead the charge in collecting items and information for inclusion in the state box you contribute to the FFA 100<sup>th</sup> Anniversary Time Capsule, which will be filled at the 2003 National FFA Convention. Consider items that represent your state, its agricultural base, and the status of agricultural education. Pictures, letters, magazine clippings, scrapbooks, etc. are just some of the items that could be included. Reflect on the past 25 years from 1977 through 2003. Summarize the present attitudes and atmosphere regarding agricultural education, agriculture and FFA. Envision the future. Set forth predictions. In his letter, the 1977-78 national FFA



western region vice president predicted convention attendance at the 75th National FFA Convention would reach 50,000 people. Final attendance numbers were 51,025.

Be creative. While financial reports, meeting minutes and leadership conference curriculum may give future members an idea of FFA in 2003, consider what it feels, looks, tastes, and smells like. Capture FFA in ways from which future generations can learn. Specifics

- State boxes must be the size of a shirt box or a UPS shipping box (2nd Day Air). Dimensions are approximate. Try not to exceed the following: 17" x 12.5" x 3.5".
- Boxes cannot contain perishable items. The time capsule will be placed in storage and not opened for a pre-determined time - 25 years maximum.
- The National FFA Organization cannot guarantee the safe return of items included in state boxes. You are encouraged to make copies of or keep an itemized list of the materials included in your box.
- An itemized list of materials included in your box must be submitted to National FFA before being placed in the Time Capsule.

## ALUMNI NEWS

**The National FFA Alumni Association's 2003 State Leaders Conference:** The National FFA Alumni Association invites you to attend the 2003 SLC in Corpus Christi, Texas, July 22-27, 2003. Contact your state FFA alumni leadership for registration information or contact Frank Saldana, [fsaldana@ffa.org](mailto:fsaldana@ffa.org) <<mailto:fsaldana@ffa.org>>, 317-802-4292, for more information.

**National FFA Alumni Auction:** This year's Alumni Auction is going to be one of the best! The auction committee and National FFA Foundation have been hard at work securing objects ranging from household items to weekend getaways. Be sure to come by during the national FFA convention and participate in the bidding excitement and to vote for your favorite state basket! The silent auction will run from Wednesday, Oct. 29 - Friday, Oct. 31. A complimentary social is being planned prior to the live auction on Friday evening. Supporters of Agricultural Education and FFA are encouraged to "get involved" by donating specialty items that would contribute to the success of the auction. All funds raised go to support WLC scholarships and local Chapter grants. For a listing of all auction items, schedules and to download a donation form, be sure to visit our website at <http://www.ffa.org/alumni>. For more information please contact Amber Smyer, [asmeyer@ffa.org](mailto:asmeyer@ffa.org) <<mailto:asmeyer@ffa.org>>, or 317-802-4294.

**National FFA Alumni Convention Raffle:** The National FFA Alumni Association will again be holding raffles in conjunction with the 2003 National FFA Convention. This year two raffles are being organized. Prior to the convention, a limited supply of three thousand tickets are being sold for a John Deere Gator at \$10 a ticket or 3 for \$20. In a second raffle, tickets will be sold at the national FFA convention for an EZ-Go WorkHorse and a Husqvarna YTH2046 Yard Tractor. Tickets can be purchased at the Alumni booth in the center aisle of the shopping mall for \$1 a ticket, with a bonus ticket for every \$5 you spend. The winners of all three items will drawn during the Alumni Live Auction on Friday, Oct. 31 at 6 p.m. (Need not be present to win). For more information on the raffles, please contact Amber Smyer, [asmeyer@ffa.org](mailto:asmeyer@ffa.org) <<mailto:asmeyer@ffa.org>>, or 317-802-4294.

## STATE STAFF NEWS

**Nominations for judges being accepted:** The National FFA Organization is accepting nominations for judges for the Agricultural Proficiency Awards, Star Awards, Agriscience Awards and National Chapter Awards at the 2003 National FFA Convention in Louisville, Ky., this fall. The Agricultural Proficiency and the Star Awards judging will take place Thursday, Oct. 30, 2003. All of the judges will be invited to an awards luncheon on that day. The Agriscience Awards will be judged Wednesday, Oct. 29 and Thursday, Oct. 30. National Chapter Awards, Models of Innovation awards will be judged Wednesday, Oct. 29. We are not able to cover any expenses for the judges. Nominations can be submitted on the attached form and should be mailed to Rosalie Hunsinger, National FFA Organization, P.O. Box 68960, Indianapolis, IN 46268-0960 or faxed to her at 317-802-5255.

## INTERNATIONAL HAPPENINGS

**International teacher opportunities available:** Competitive scholarships are available for agriculture teachers to participate in an international experience through EARTHWATCH. The scholarships are available for use in 2003. EARTHWATCH is a research organization with international expeditions throughout the world. Expeditions take place throughout the year. Participants receive scholarships of up to \$1500 to cover a portion of the expedition costs plus membership to EARTHWATCH. Applications are being accepted and are available online at [www.ffa.org/programs/global/](http://www.ffa.org/programs/global/) [≤http://www.ffa.org/programs/global/≥](http://www.ffa.org/programs/global/).

**FFA Global Leadership Training available online:** FFA Global is looking for agriculture instructors who are interested in exploring agriculture in our exciting, online learning program about global agriculture. A “real world” storyline allows students to learn about global agriculture and U.S. policy as they follow the lives of two fictional FFA members as they travel to Moldova, Honduras and Ethiopia. Several chapters are already using the program and if you are interested in learning more about this project, contact FFA Global, [global@ffa.org](mailto:global@ffa.org) [≤mailto:global@ffa.org≥](mailto:global@ffa.org), or 317-802-4309. Visit the FFA Global Leadership Scenarios site at [www.ffa.org/scenarios](http://www.ffa.org/scenarios) [≤http://www.ffa.org/scenarios≥](http://www.ffa.org/scenarios) today!

## PREVIOUSLY REPORTED IN UPDATE

**National FFA Awards and CDE Advisory Board Award Revision Process:** Every five years, the National FFA Organization's CDEs, award and recognition programs are reviewed to keep them closely aligned with instructional relevance, current technology, industry practices and the mission, vision and strategic direction of Agricultural Education and FFA. This year, we are beginning another round of this ongoing review process.

Currently, three subcommittees evaluating award and recognition programs. As the committees continue their review process, the National FFA Organization will keep you up-to-date with the progress and status of the committees and the project timeframe, which is expected to last through 2005. The award revision process white paper, timeline and committee updates are available online at [≤http://www.ffa.org/statestaff/html/awardrevision.html≥](http://www.ffa.org/statestaff/html/awardrevision.html).

**Communication Resource Index on ffa.org:** A whole host of communication resources for state and local use is now available online at

<http://www.ffa.org/comm/commindex.html>, a handy one-stop shop for state and local communication materials. Logos and the new *Opening Doors* materials are available here, as are standards and guidelines covering topics such as news releases, key messages and frequently asked questions. Throughout 2003 and 2004, we'll be adding new materials to this resource index every quarter, so check back often to see what's new.

**National FFA Convention in Indianapolis in 2006:** The annual national FFA convention is in Louisville, Ky., again this year, and will not move to Indianapolis until 2006. You can access convention site selection information at:  
[http://www.ffa.org/about\\_ffa/convention2006/index.html](http://www.ffa.org/about_ffa/convention2006/index.html).

**UPDATE** is also available at [www.ffa.org/news/html/ffapubsindex.html#update](http://www.ffa.org/news/html/ffapubsindex.html#update)  
<http://www.ffa.org/news/html/ffapubsindex.html#update> each month. Attachments are available online.

=====

#### The FFA Mission

FFA makes a positive difference in the lives of students by developing their potential for **premier leadership, personal growth** and **career success** through agricultural education.

#### The Agricultural Education Mission

Agricultural Education prepares students for successful careers and a lifetime of informed choices in the global agriculture, food, fiber and natural resources systems.

The National FFA Organization is a resource and support organization that does not select, control or supervise state association, local chapter or individual member activities except as expressly provided for in the National FFA Organization Constitution and Bylaws.

The National FFA Organization affirms its belief in the value of all human beings and seeks diversity in its membership, leadership and staff as an equal opportunity employer.

© 2003 National FFA Organization



FFA2.pdf (992 KB)



Conv Site Selection  
FAQ.doc (4...



Convention Judges  
Nomination F...



state information  
form.doc (53...



spam\_education.pd  
f (217 KB)



# FFA RACE DAY 2003



## Michigan International Speedway

### CABELA'S 250

FFA Has Developed A Fun Filled Hospitality Day  
Saturday, August 16th in Brooklyn, MI

#### HOSPITALITY PACKAGE INCLUDES:

- Reserved Grandstand seats with a view of the entire track and all of pit lane. (\$50.00 value)
- FREE pre-race Pit Passes for everyone 18 and older. (\$50.00 value)
- VIP access to FFA Hospitality Tent located in the North Concourse Hospitality Village. (\$25.00 value)
- Free lunch served before the race in Hospitality Tent. (\$25.00 value)
- Free parking.
- Prizes and give-aways all day long:
  - Winston Cup Garage Tours
  - Limited Edition *Tony Stewart NASCAR Schedule Poster*
  - NASCAR merchandise
  - Gifts from sponsors of the event
- Guest speakers to include:
  - *Randy LaJoie*: Driver of the #7 Kleenex Chevrolet and two-time NASCAR Busch Series Champion
  - *Sam Pardon*: Head fabricator/welder for Ward Burton's #22 Winston Cup Caterpillar Dodge

**ALL FOR \$60.00**

(Value of package: \$175.00)

Proceeds going back to State & National FFA

**Members, Parents, Teachers, and Supporters Call  
1-800-354-1010**

(Just say "I'm with FFA" and receive this amazing package!)

**This is open to all supporters of FFA!!!!**

**Deadline is Monday, August 4, 2003**

**Communicating About the  
2006-2012 National FFA Convention  
Site Selection Process  
February 7, 2003  
-FAQ-**

As most of you know, the National FFA Board of Directors and National FFA Officers have selected Indianapolis to host the 2006-2012 national FFA conventions. To help you address questions or comments, please review carefully the following information and guidelines. It is important that we communicate clearly and in a way that does not detract from the success and excitement of three remaining national conventions in Louisville, particularly the next year of continuing of 75th anniversary celebration.

**I. The Facts**

- FFA will hold the 2006-2012 National FFA Conventions in Indianapolis.
- The board voted to extend the 5-year contract period to 7 years, following a recommendation by both Indianapolis and Louisville.
- The main convention sessions will be held in Conseco Fieldhouse arena.
- The recommendation of Indianapolis by the convention site selection committee and the decision by the board and officers to approve that recommendation were both unanimous.
- Serving on the convention site selection committee were Bob Heuvel (chair), state supervisor of agricultural education and FFA board member, California; Vicki Lantz, agriculture teacher and FFA board member, Pennsylvania; Steve Zimmerman, state supervisor of agricultural education and FFA board member, North Dakota; Angela Browning, past national FFA officer, California; and Jennifer Edwards, past national FFA officer, Alabama.

**II. Guidelines for Communications**

- FFA will not release specific information about the bids out of respect for the cities' need to preserve confidentiality in the competitive negotiation process.
- FFA will not seek to highlight or promote Indianapolis as a convention site, but will instead focus on successfully staging the three remaining conventions in Louisville, including the continuing anniversary celebration in 2003.

### **III. Key Messages**

*These messages should be included as appropriate when discussing or communicating about the convention site selection:*

- The decision was based on providing the best service and educational value to students and teachers in the years under consideration.
- A committee, appointed by the National FFA Board of Directors, representing FFA and agricultural education conducted the site selection process.
- The cities were evaluated using a “scorecard” with criteria developed by teachers, students and state staff.
- All cities had strong assets and advantages, and each was capable of providing exceptional service and support.
- FFA is grateful for the support and hospitality received from Columbus, Indianapolis, Louisville and Nashville.
- While no one city involved in the bidding process scored “best” in every category, FFA believes Indianapolis represents the most balanced approach to meeting its needs in the years under consideration.
- Selection of the location for the national FFA convention is a board issue, and does not require action by the delegates.
- Louisville will continue to host the convention through the end of its current contract in 2005.
- FFA looks forward to an exciting and successful 76th National FFA Convention this October in Louisville.

### **IV. Potential Questions (FAQ)**

1. *Why is FFA moving its convention?*  
Based on the information available today, FFA has selected the site it believes will provide the greatest service and educational value for its members and teachers in the years 2006-2012.
2. *What cities were considered?*  
The four finalist cities bidding on the convention were Columbus, Ohio; Nashville, Tennessee; Louisville, Kentucky; and Indianapolis, Indiana.
3. *What is the value of this convention agreement?*  
The annual financial impact of the national FFA convention is estimated to be \$25-30 million.

4. *If the Indianapolis was the choice over Louisville in 2002, why wasn't it selected for the 1998 convention?*  
Since 1998 Indianapolis has added Conseco Fieldhouse, 120,000 square feet to the Convention Center, a 600 room Marriott hotel connected to the Convention Center and nearly 3,800 hotel rooms.
5. *Won't it be more expensive for FFA to hold its convention in the larger city of Indianapolis?*  
When all related expenses are considered, it will actually be less expensive to attend and hold the national FFA convention in Indianapolis.
6. *There is no tax exemption for hotel rooms in Indiana. Has this additional cost been considered?*  
Yes, even with the room sales tax charge, the cost for attendees in Indianapolis will be less than any of the cities bidding.
7. *Who created the scorecard used to evaluate the cities?*  
Teachers, students and state FFA officials were asked to suggest criteria and priorities to construct the site evaluation scorecard. From those criteria and priorities the National FFA Board developed the Scorecard.
8. *How much financial support is Indianapolis offering?*  
FFA asked for a \$500,000 (1/3 may be in-kind) pledge of financial support for the convention, and both Louisville and Indianapolis met this requirement.
9. *Will the delegates have to approve the decision?*  
Selecting the location for the national FFA convention is a board responsibility and does not require action by the delegates.
10. *Why won't FFA produce a side-by-side comparison of the two cities?*  
FFA will not disclose details of the bids from either city out of consideration for the cities' needs for confidentiality in contract negotiations. FFA also does not wish to divert focus from the excellent facilities and support in Louisville for the next four national FFA conventions.
11. *Won't security be harder to manage in Indianapolis compared with Louisville?*  
Despite the difference in size, FFA believes that safety and security factors are comparable in both cities, and each was prepared to devote additional resources to enhancing security.
12. *Isn't a city the size of Indianapolis going to be more expensive for attendees in terms of food and lodging?*  
Without sharing specifics, the average cost of the hotel rooms committed for the FFA convention in Indianapolis will be somewhat less than in Louisville. Additionally, more rooms in Indianapolis will be closer to the convention site. Both cities offer an array of dining choices that is comparable in range and cost.

13. *Is Indianapolis a more expensive travel destination by air?*  
The cost of airfare is comparable between Indianapolis and Louisville, though more flights are available through Indianapolis.
14. *Will parking be more difficult in Indianapolis?*  
In addition to on-site open lot parking for buses and vans at the convention center and state fairgrounds facilities, Indianapolis has committed the use of ramp and assigned parking sufficient to meet the needs of cars arriving for the FFA convention.
15. *Will it be more difficult to supervise students in Indianapolis?*  
FFA advisors have demonstrated an ability to supervise their students in a large urban area during the 71 conventions in Kansas City. That same level of supervision should prove effective for the convention in Indianapolis.
16. *Will there be more “distractions” in downtown Indianapolis that take the focus away from the convention?*  
While the location of the convention events in Indianapolis will bring teachers and students into greater contact with the “vibrancy” of a urban downtown location, this was shown to be both desirable and manageable during the conventions held in Kansas City.
17. *How will local transportation be handled?*  
Indianapolis will provide shuttle bus service to and from major hotels and the a few CDE events at the state fairgrounds.
18. *Is the convention site further away from our greatest concentration of members?*  
Both Louisville and Indianapolis are ideally located geographically and are in close proximity to the largest portion of the FFA membership.
19. *Why was the seven-year contract signed vs. the five-year contract, originally approved by the Board of Directors?*  
There were nine cities who could not bid as they already had space committed for 2006-2012. Some cities book space up to 20 years out. Even the cities who bid but lost out encouraged FFA to bid earlier in the process. The Board then committed for seven years to give greater lead time for the 2012 and beyond bid.
20. *What are the convention dates for 2006 - 2012?(Wednesday – Saturday)*  
2006: October 25-28, 2006  
2007: October 24-27, 2007  
2008: October 22-25, 2008  
2009: October 21-24, 2009  
2010: October 20-23, 2010  
2011: October 19 – 22, 2011

2012: October 24 – 27, 2012



Due to National Center by June 1, 2003

## Star, Agricultural Proficiency Award and Other Selection Committee Recommendations

The following individual should be included among those invited to judge National FFA Awards, Agricultural Proficiency Awards or the Stars Over America at the National FFA Convention this fall:

Name: \_\_\_\_\_

Title: \_\_\_\_\_

Company/Organization: \_\_\_\_\_

Address: \_\_\_\_\_

City: \_\_\_\_\_ State: \_\_\_\_\_ ZIP: \_\_\_\_\_

Telephone (Area Code Number) \_\_\_\_\_

E-mail Address: \_\_\_\_\_

**(Please complete a separate form for each individual that you nominate.)**

The nominee is best qualified in one of the following award categories:

- Agricultural Communications Entrepreneurship/Placement \_\_\_\_\_
- Agricultural Crops Entrepreneurship/Placement \_\_\_\_\_
- Agricultural Livestock Entrepreneurship/Placement \_\_\_\_\_
- Agricultural Mechanical/Technical Systems \_\_\_\_\_
- Agricultural Sales Entrepreneurship or Placement \_\_\_\_\_
- Agricultural Services Entrepreneurship/Placement \_\_\_\_\_
- Emerging Agricultural Technology \_\_\_\_\_
- Equine Science Entrepreneurship or Placement \_\_\_\_\_
- Food Science and Agricultural Processing \_\_\_\_\_
- Horticulture or Nursery Operations \_\_\_\_\_
- Natural Resources Management & the Environment \_\_\_\_\_
- Small Animal/Specialty Animal \_\_\_\_\_
- Star Farmer \_\_\_\_\_
- Star in Agribusiness \_\_\_\_\_
- Star in Agricultural Placement \_\_\_\_\_
- Star in Agriscience \_\_\_\_\_
- National Chapter \_\_\_\_\_
- Agriscience Fair \_\_\_\_\_
- Agriscience Students and/or Teachers \_\_\_\_\_

Person making nomination: \_\_\_\_\_

Please send all recommendations to:

Rosalie Hunsinger  
Program Coordinator  
National FFA Organization  
P.O. Box 68960  
Indianapolis, IN 46268-0960  
Or FAX: (317) 802-5255

# National FFA Leadership & Personal Growth Series

## State Information Form 2003-04

Please complete and fax to April Pruet, 317-802-5256 **by July 15.**

**Which conference are you planning?** (Please check one)    EDGE    MFE    ALD

*Note: You must submit a separate form for each conference.*

State FFA Association \_\_\_\_\_

State Contact Person \_\_\_\_\_ Title \_\_\_\_\_

Telephone Number (\_\_\_\_\_) \_\_\_\_\_ E-mail \_\_\_\_\_

Date of Conference \_\_\_\_\_ Starting time of Conference \_\_\_\_\_

Estimated number of expected participants \_\_\_\_\_ *(Note: The minimum participation number is 75)*

On what date will you have an **accurate count** of participants? \_\_\_\_\_

### Where will the conference be held?

Hotel/Motel/Facility \_\_\_\_\_

Street Address \_\_\_\_\_

City \_\_\_\_\_ State \_\_\_\_\_ Zip \_\_\_\_\_

Telephone Number (\_\_\_\_\_) \_\_\_\_\_

Hotel Contact Person \_\_\_\_\_ Title \_\_\_\_\_

Should the conference materials (notebooks, etc.) be shipped directly to the hotel?

( ) Yes    ( ) No

If no, where should they be shipped? \_\_\_\_\_

Does the hotel provide complimentary shuttle bus/van service to and from the airport?

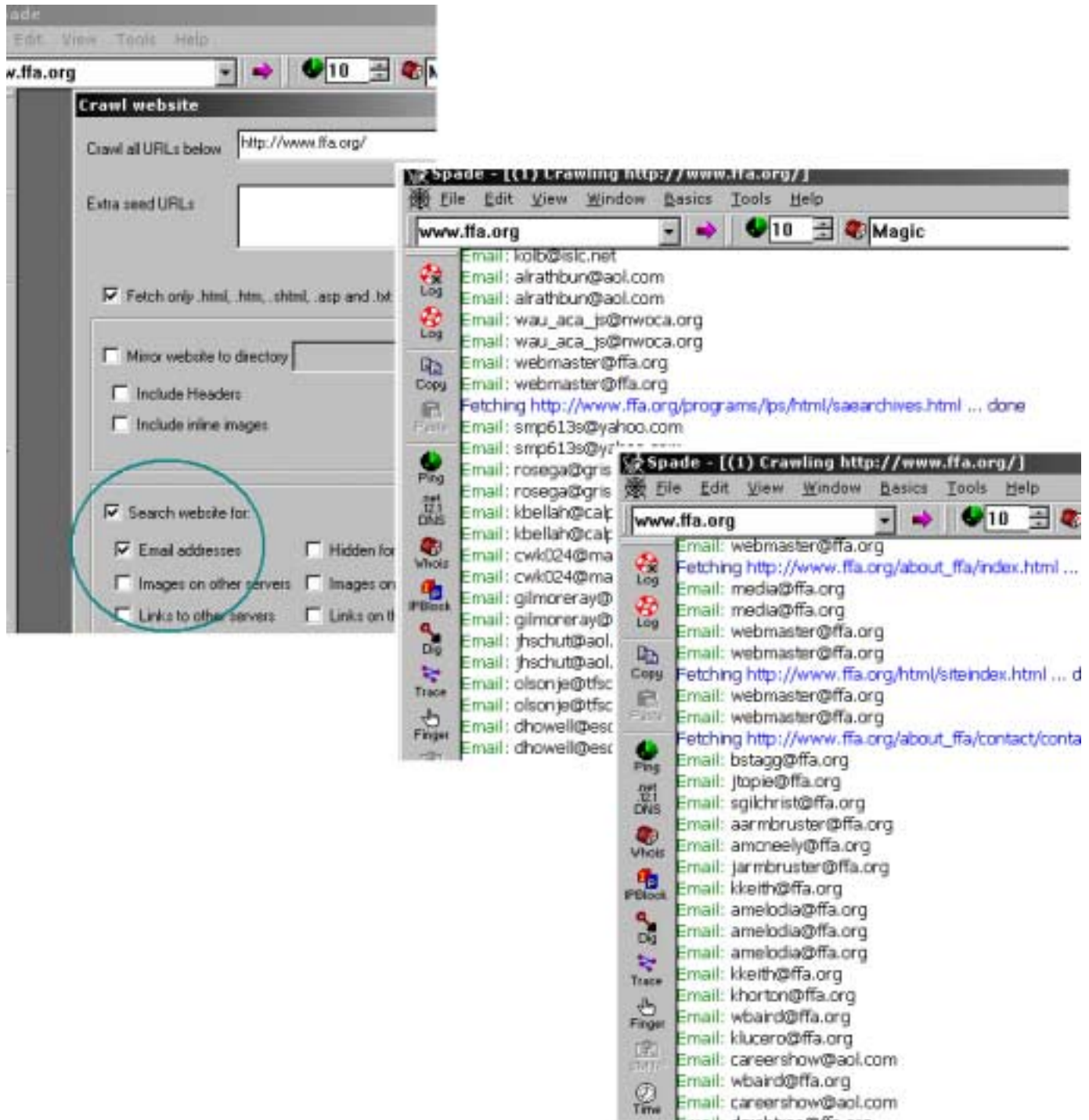
( ) Yes    ( ) No

What is the **major** airport nearest to this facility? \_\_\_\_\_

How far away is the airport? \_\_\_\_\_ miles \_\_\_\_\_ minutes \_\_\_\_\_

Additional comments: \_\_\_\_\_

It's very very easy to extract a list of email addresses from a web site.... With the free tool demoed below I extracted hundreds upon hundreds of emails from [www.ffa.org](http://www.ffa.org) in a matter of seconds.



Imagine the wealth of emails there are just on our website... both of our internal addresses, and worse yet, our members.... People need to understand that if you post your email everywhere you're going to get spam.

It's just like publishing your phone number in the phone book. If you put your number in there; sure your great grandma Betty can look you up, call and give you her cookie recipe, but telemarketers are also going to call and try and sell you new vinyl siding. If you don't want the calls don't post your number.

**ffa.org**

Home | About FFA | Student Members | Agricultural Education

## National FFA Contacts

National FFA Center  
P.O. Box 68960, 6060 FFA Drive  
Indianapolis, IN 46268-0960  
Phone: 317-802-6060 \* Fax: 317-802-6060

General Inquiries	<a href="#">William Stagg</a>	317-
Webmaster	<a href="#">Jerry Topie</a>	317-
Catalog Merchandise	<a href="#">Sheridan Gilchrist</a>	317-

[Administration](#) | [Business Services](#)  
[Development & Partnerships](#) | [Education Division](#)  
[Information Services](#)

## National FFA Program Contacts

[National FFA Programs Index](#)

Program	Staff	
Advanced Leadership Development (ALD) • Curriculum • Logistics	<a href="#">Andy Armbruster</a> <a href="#">Andrea McNeely</a>	
Advisor Development Program	<a href="#">Jim Armbruster</a>	
Agri-Entrepreneurship Awards	<a href="#">Kevin Keith</a>	317-802-4254
Agriscience Fair	<a href="#">Anna Melodia</a>	317-802-4224
Agriscience Student Award	<a href="#">Anna Melodia</a>	317-802-4224
Agriscience Teacher Award	<a href="#">Anna Melodia</a>	317-802-4224
American FFA Degree	<a href="#">Kevin Keith</a>	317-802-4254
Blast Off	<a href="#">Kelly Horton</a>	317-802-4248
Career Development Events	<a href="#">Wendy Baird</a>	317-802-4263

**National FFA Organization Forums - "what is ur advisor li**

File Edit View Favorites Tools Help

Address <http://209.164.43.33/dcforum/DCForumID22/1031.html#3>

she still is pretty young, well at

**Krystle Ward**  
Ponderosa FFA Chapter President  
Sacramento Section FFA President  
Central Region, California  
[FFASacSecPrez@hotmail.com](mailto:FFASacSecPrez@hotmail.com)

[Remove](#) | [Alert](#)

**Yosemite\_Sam** 8. "RE: what is ur advisor like?"  
07-01-02, 12:44 PM (CST)

19 posts

My advisors are both guys and n  
make me want to be an advisor.  
had to grow a mustache so peop  
are both really amazing people a  
"grow up". Mr. Russell(the older  
both of the teams won state. He  
about them before that and I go  
but still serious at the same time  
throwing water at them or some  
best, and they make our FFA ch  
else at my school pretty much #

**Sam Urie**  
Payson (UT) FFA  
Sentinel  
[sam\\_urie@hotmail.com](mailto:sam_urie@hotmail.com) - email at

People don't understand that everywhere they or someone posts info about someone on a website, chat board, news group, etc that it's a potential target for spammers to collect and use.

For example here below I searched the web for an email address with some common search engines... This is a person that thought they hadn't put their email address anywhere but with us.... Apparently they are wrong, whether they realize it or not, I found it at two other totally independent farm related sites.

We have absolutely no way to stop spammers of collecting an address on another site and spamming a person. That would be similar to me walking into the post office and saying "give me all the mail that Billy down the street sent Tommy on the other side of town, because Billy wants me to stop all Tommy's mail."

**Re: Privacy and external parties SPAMming others using the 'FFA' name**

File Edit View Insert Format Tools Actions Help

Reply Reply to All Forward

You forwarded this message on 07/01/2002 10:58 AM. Click here to find all related messages

From: Carol and Walter Ellefson [cwellef@svtv.com]  
To: Brentlinger, Mike  
Cc:  
Subject: Re: Privacy and external parties SPAMming others using the 'FFA' name

-----Original Message-----  
**From:** Carol and Walter Ellefson [mailto:cwellef@svtv.com]  
**Sent:** Monday, July 01, 2002 7:18 AM  
**To:** webmaster@ffa.org  
**Subject:** Privacy

Before Christmas I entered your address and ordered Christmas gifts with the FFA very disgusting porno Email messages, some of them saying that I receive them a have not used any other address that remotely resembles the letters FFA other than

Google™ Advanced Search **YAHOO!**

Web Images Groups Directory

Search Results cwellef@svtv.com

Your search: cwellef@svtv.com Categories | Web Sites

Did you mean: [cwellef@sbtv.com](mailto:cwellef@sbtv.com)

**Web Page Matches**

- [Norway Parishes and Farms AB](#)  
... Ponto. Blinsmon farm, Ole Olson, -surname em 1880 possibly before 1854, Carol Ellefson [cwellef@svtv.com](mailto:cwellef@svtv.com). B <http://www.rootsweb.com/~wgnorway/par-a-b.htm>
- [P Name Register](#)  
... both left AUS and went back to IRL', 'Personal d

Worst off, faking the origin of mail is extremely simple. Observe below as I send a mail to myself faking the sender field to seem as though it came from someone at the FBI. Because of the way email is designed and likened after real mail its simple to pretend to be someone you're not.

How hard would it be to write up a nasty letter to the president of some major company, slap a stamp on it and then write some random return to address on the envelope and drop it in the mail? Would the FBI go arrest the person that's listed as the return address on the envelope because that's the envelope that the threatening letter came in? Probably not.

It's the same situation with email. Just because email appears to come from someone, it doesn't mean it did. There are of course checks in place on some mail servers that limit this trickery, but sadly there are just as many email servers out there that allow this aggregation to continue.

