

# Indiana Clinical and Translational Sciences Institute (I-CTSI)

Anantha Shekhar, MD, PhD

# Indiana CTSI

## What is it?

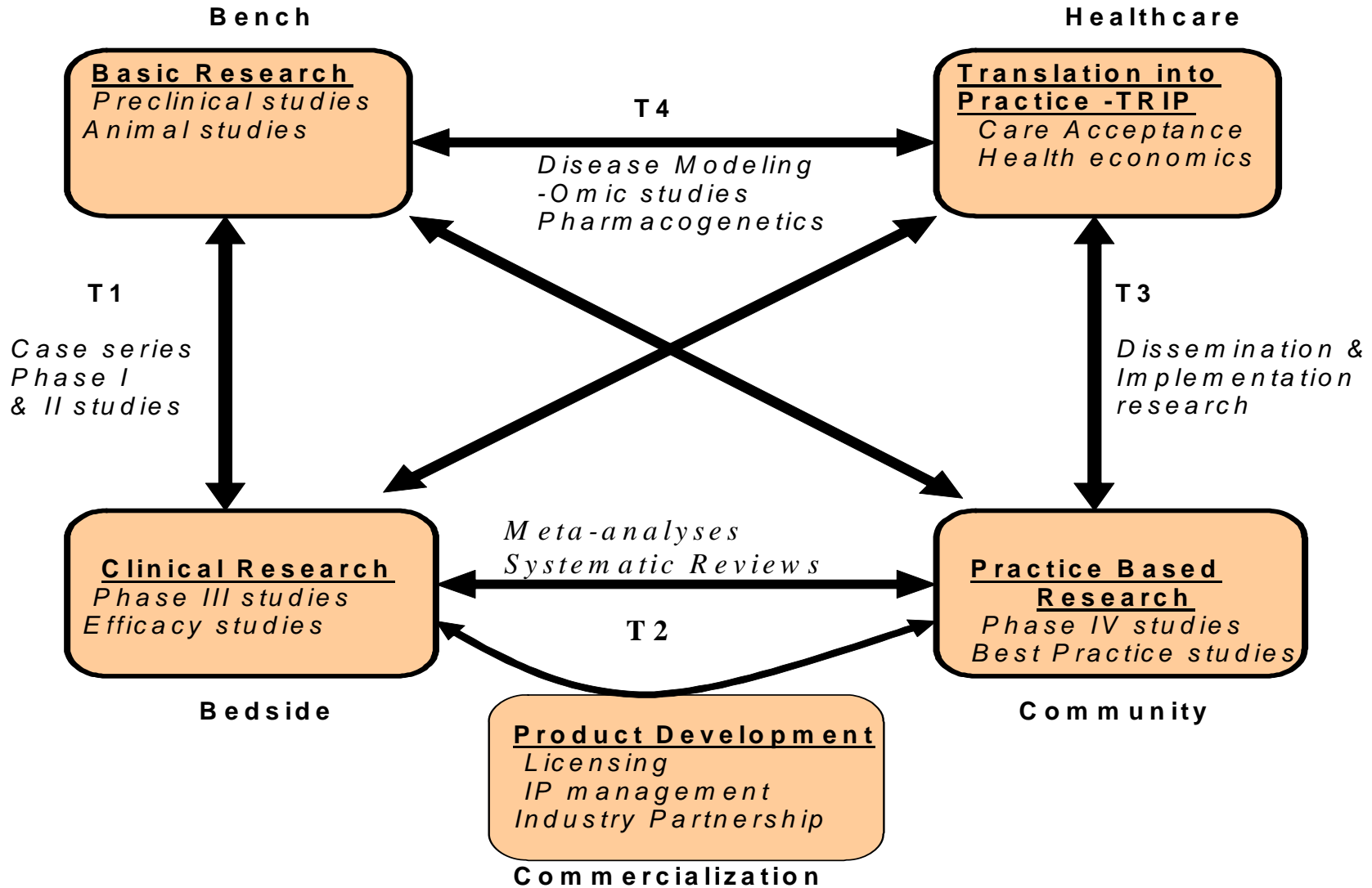
An NIH funded institute established at Indiana University with Purdue University and other statewide partners

## What is its Mission?

Increase translational research to improve the health (and economy) of Indiana

# What is Translational Research?

## Translational Circle



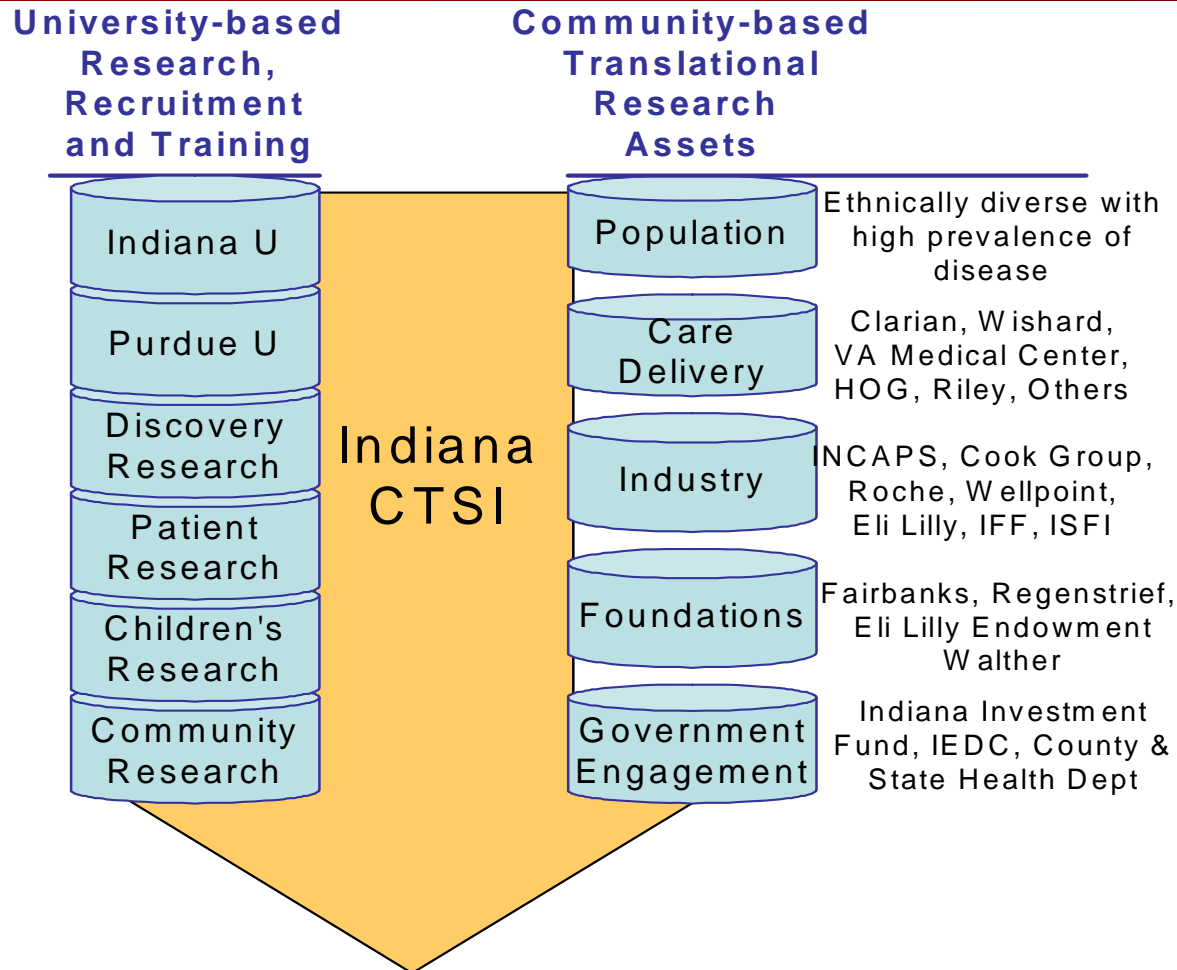
# Indiana CTSI

## What is its Funding?

- A CTSA grant from NIH of \$25 Million/5 yrs
- Indiana University, Purdue University and other statewide partners contributed over \$50 Million

## Who are its partners?

# Indiana CTSI partners



*To increase translational biomedical research and improve the health of the people of Indiana and beyond.*

# I-CTSI: Institutional Commitment

Type of Commitment	New Funds/5yrs	New Space	New space Costs
IU VP for Life Sci. funds	\$11 million		
IU President's funds	\$5 million		
Purdue President's fund	\$2.5 million		
Indiana legislature	\$15 million		
HITS Building (CTSI home)		169,000 Sq. Ft.	\$42 million
INGEN Core support	\$10 million		
Department of Pediatrics	\$6 million		
IUSM Biostats/Bioethics support	\$2.75 million		
Eli Lilly training support	\$3.15 million		
Translational fellowship	\$600,000		
Research 3 building CTSI space		6000 Sq. Ft.	\$8 million
<b>Totals</b>	<b>\$56 million</b>	<b>175,000 Sq. Ft.</b>	<b>\$50 million</b>

# I-CTSI

## Organizational Principles

- **Be inclusive, transparent and collaborative**
- **All functions are to be metrics driven and continually evaluated**
- **Enhance collaboration among academic institutions, government and private sector**

# Indiana CTSI

**Who are its users?**

Researchers, Trainees, Community members

**How can you access its resources?**

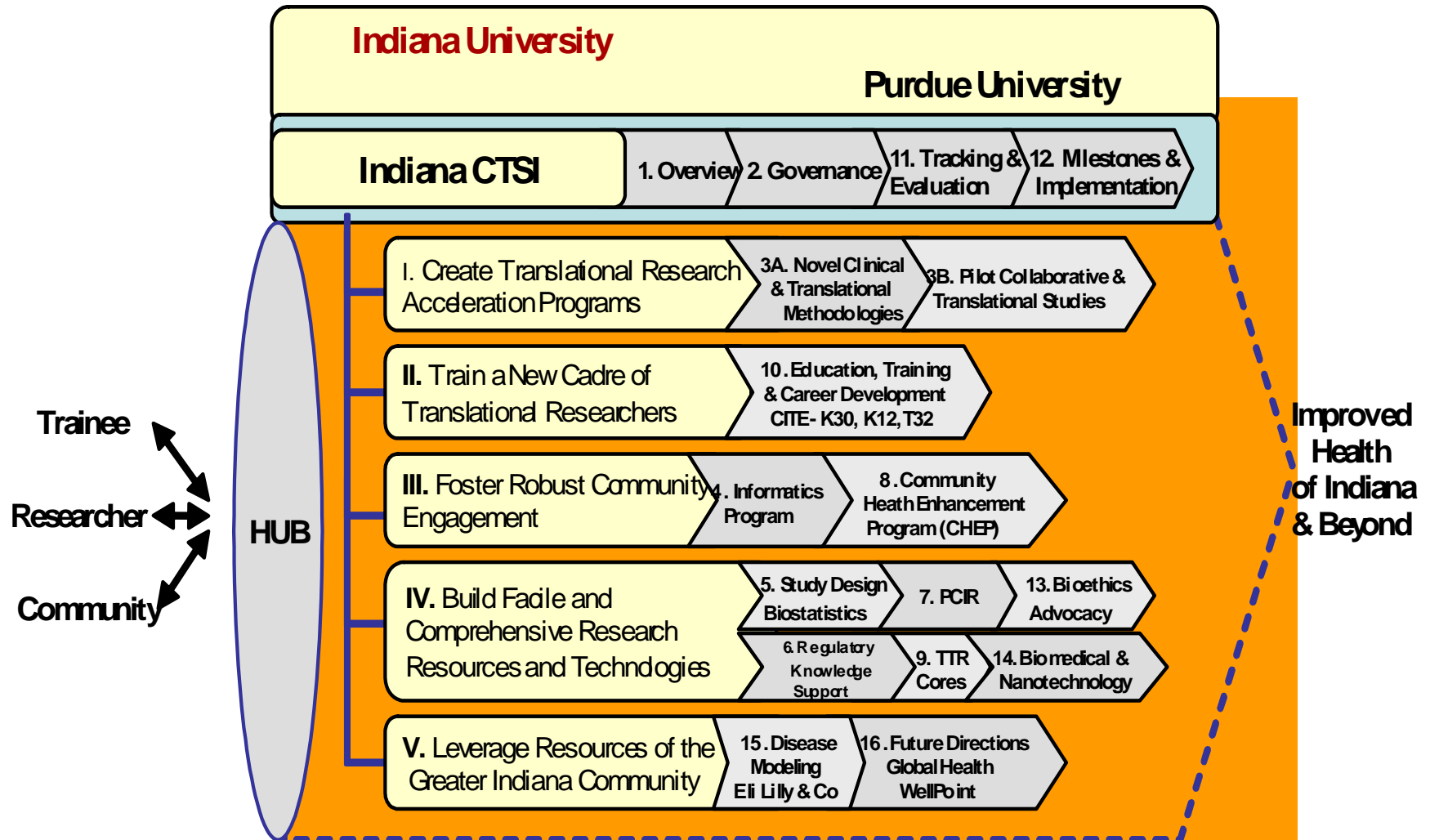
Through the CTSI 'HUB'

Log on to: [IndianaCTSI.org](http://IndianaCTSI.org)

or Call 317-278-CTSI (2874)



# I-CTSI: Structure and Goals



# **Indiana CTSI Goals**

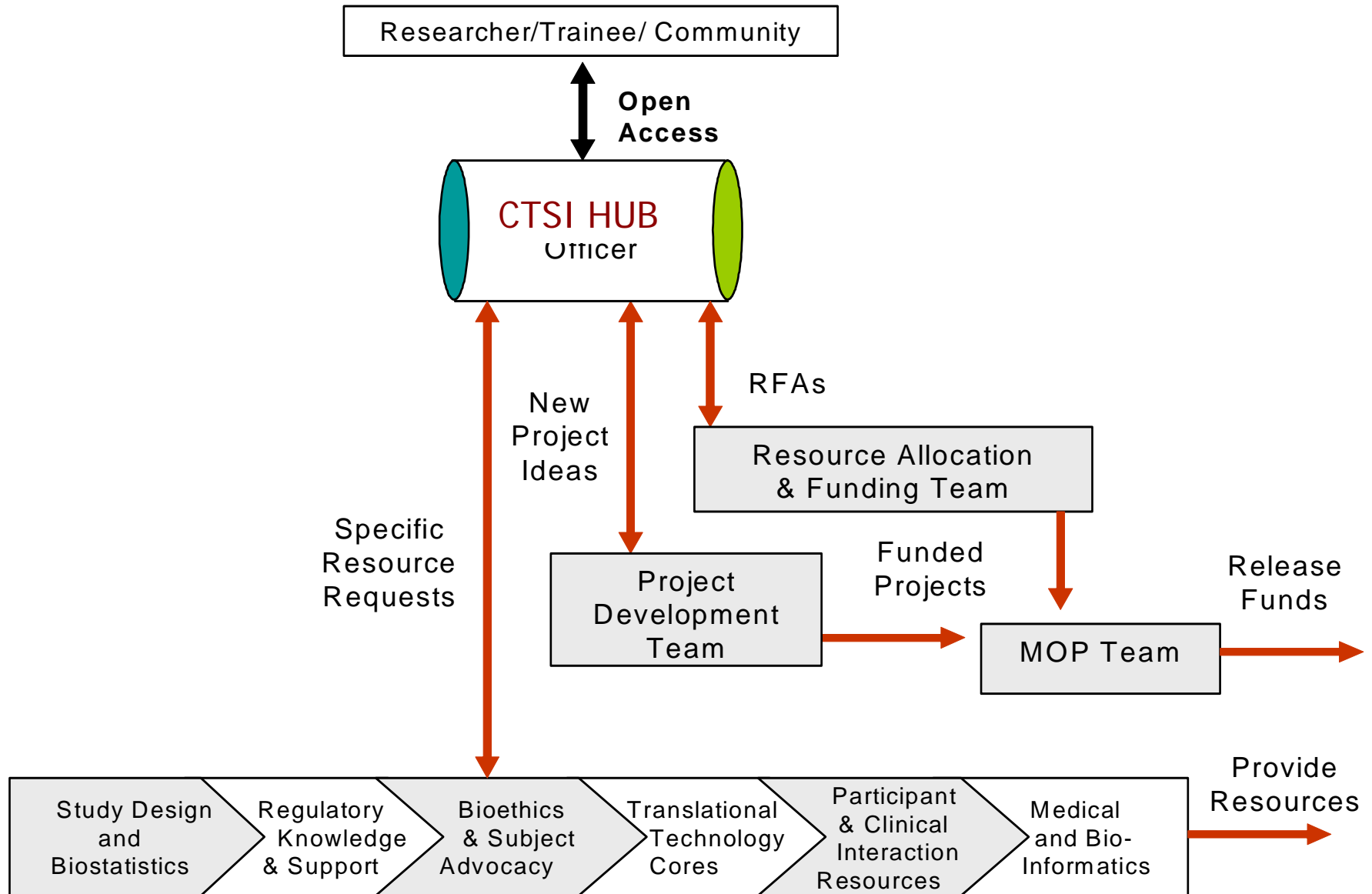
**1. Create Translational Research  
Acceleration Programs**

# I-CTSI Goal 1

## What are the translational research acceleration programs?

- Project Development Teams (PDT)
- Pilot grants (solicited & unsolicited)
- Greater access to core facilities

## How will this work?



# Mapping and Oversight Program (MOP)

- Pilots project mapping
- Mapping sets metrics and milestones
- Milestone driven access to funds

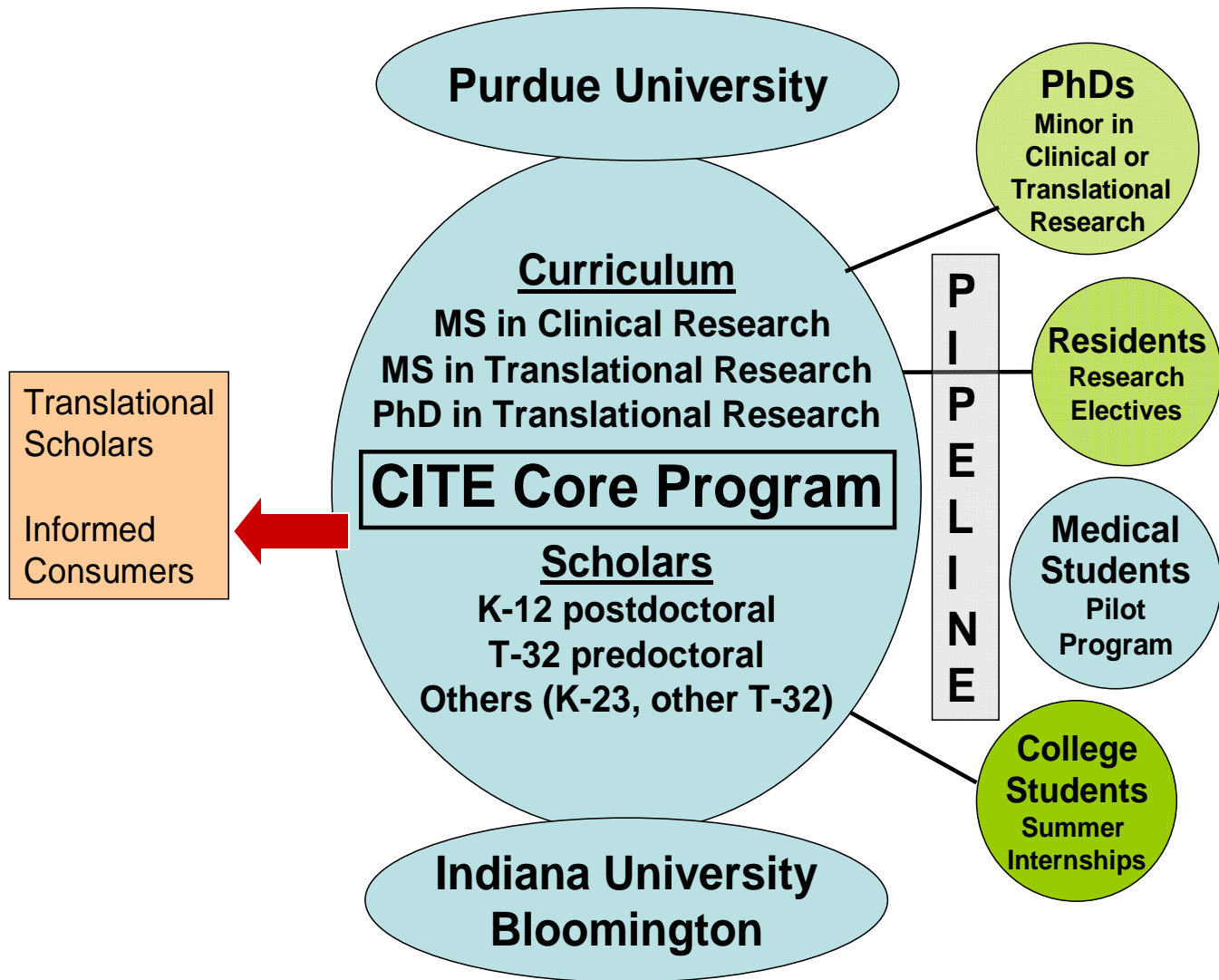
**How will this work?**

# **Indiana CTSI Goal 2**

## **Train a new cadre of Translational Researchers**

**What about the 'K 30' program ?**

**What new training programs are there?**



# Indiana CTSI

## Goals

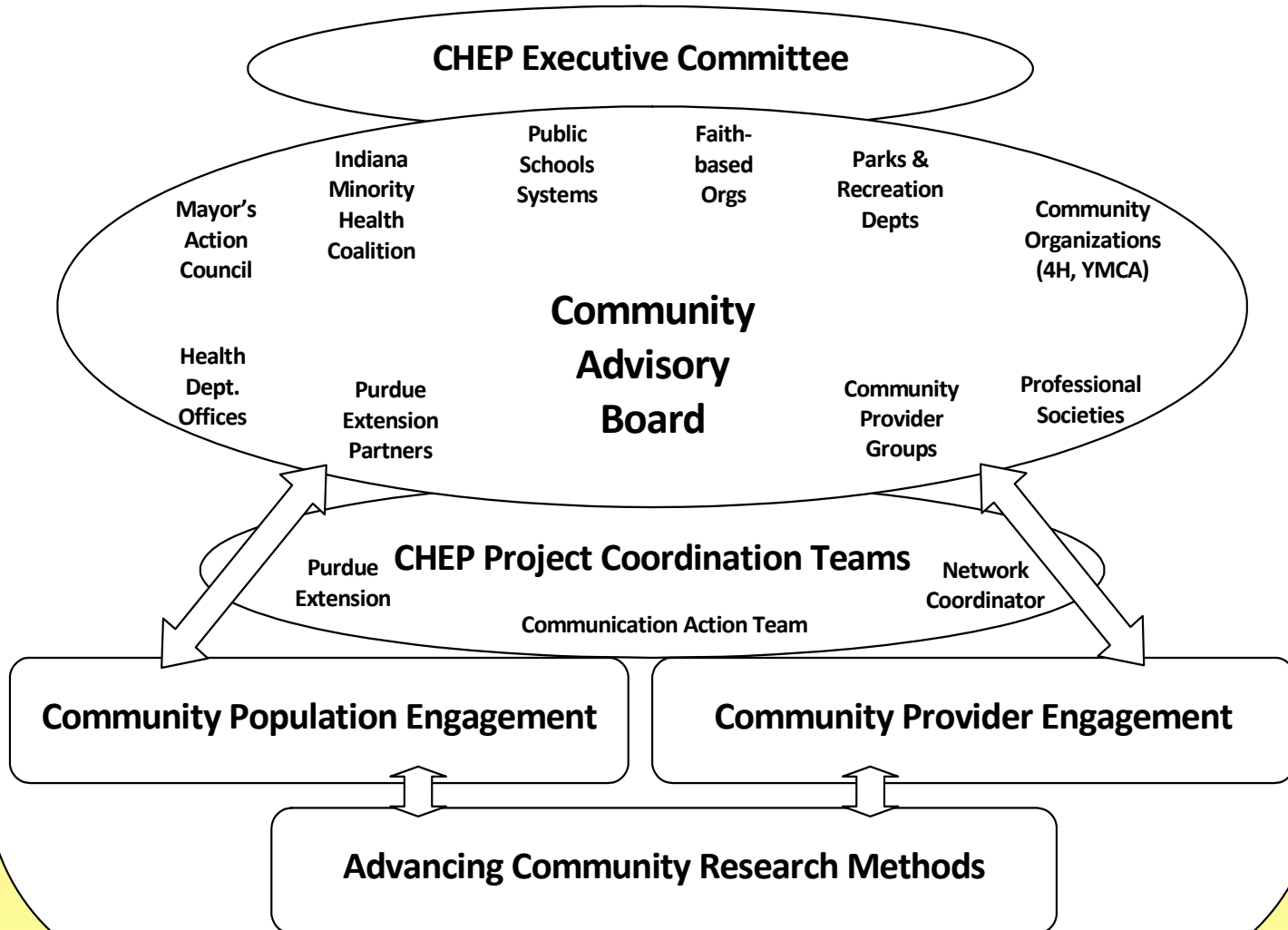
### 3. Foster Robust Community Engagement

Create 'CHEP' (community health enhancement program)



# Community Health Engagement Program

Administrative oversight and management of community engagement, practice & community data integration, communications, technical assistance, training in community



# Indiana CTSI

## Goals

### 4. Build Facile and Comprehensive Research Resources and Technologies

How is this done ?

# Indiana CTSI

## Comprehensive Resources

- **Build new programs such as**
  - Participant and clinical interaction resources (PCIR)
  - Translational technology resources (TTR)
  - Study Design and Biostatistics
  - Research ethics support and education
  - Regulatory support office
  - Central IRB

# **PCIR- Indiana CTSI**

## **What about the GCRC?**

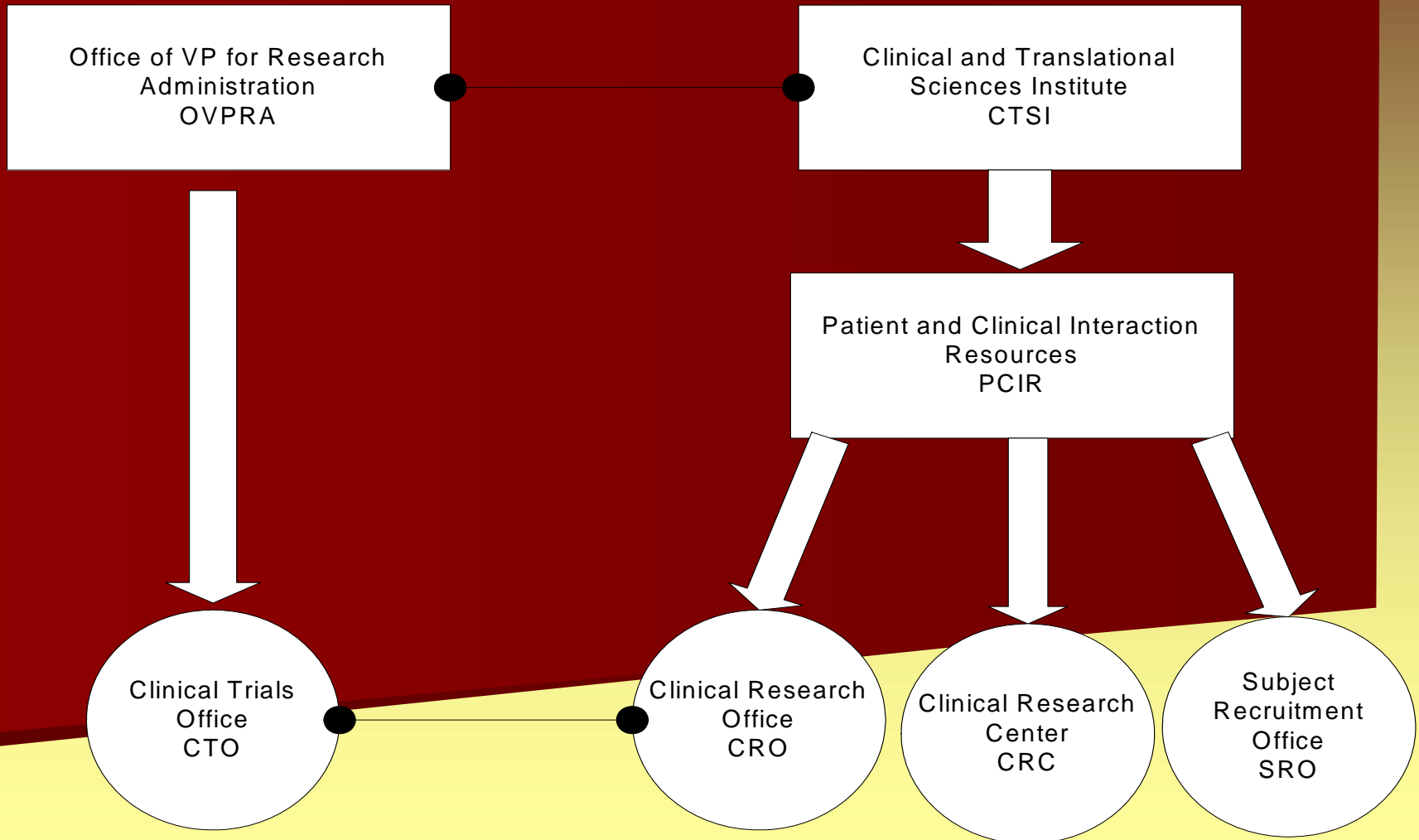
Will continue as a CRC, will have Clarian nursing, plus research nurses

## **Can you access OCRF resources?**

Yes, the OCRF services will continue as the CTSI's consolidated CRO

**Log on to: [IndianaCTSI.org](http://IndianaCTSI.org)  
or Call 317-278-CTSI (2874)**

# Participant and clinical interaction resources (PCIR)



# TTR - Indiana CTSI

**What will change with cores?**

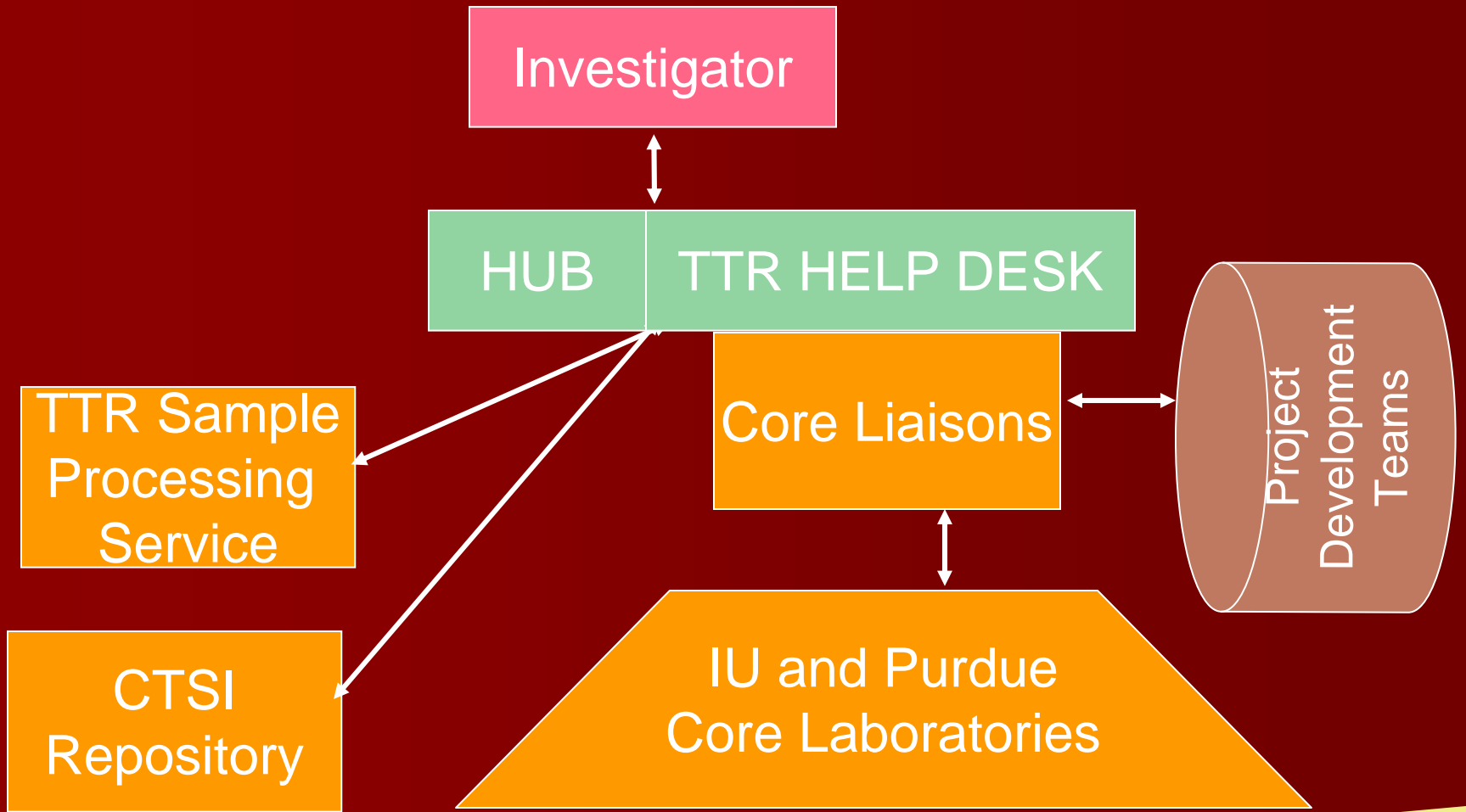
Uniform access and utilization procedures across all campuses for core facilities

**How about core utilization grants?**

Will continue through the CTSI 'HUB' or TTR helpdesk

**How about GCRC Labs?**

Log on to: [IndianaCTSI.org](http://IndianaCTSI.org)  
or Call 317-278-CTSI (2874)

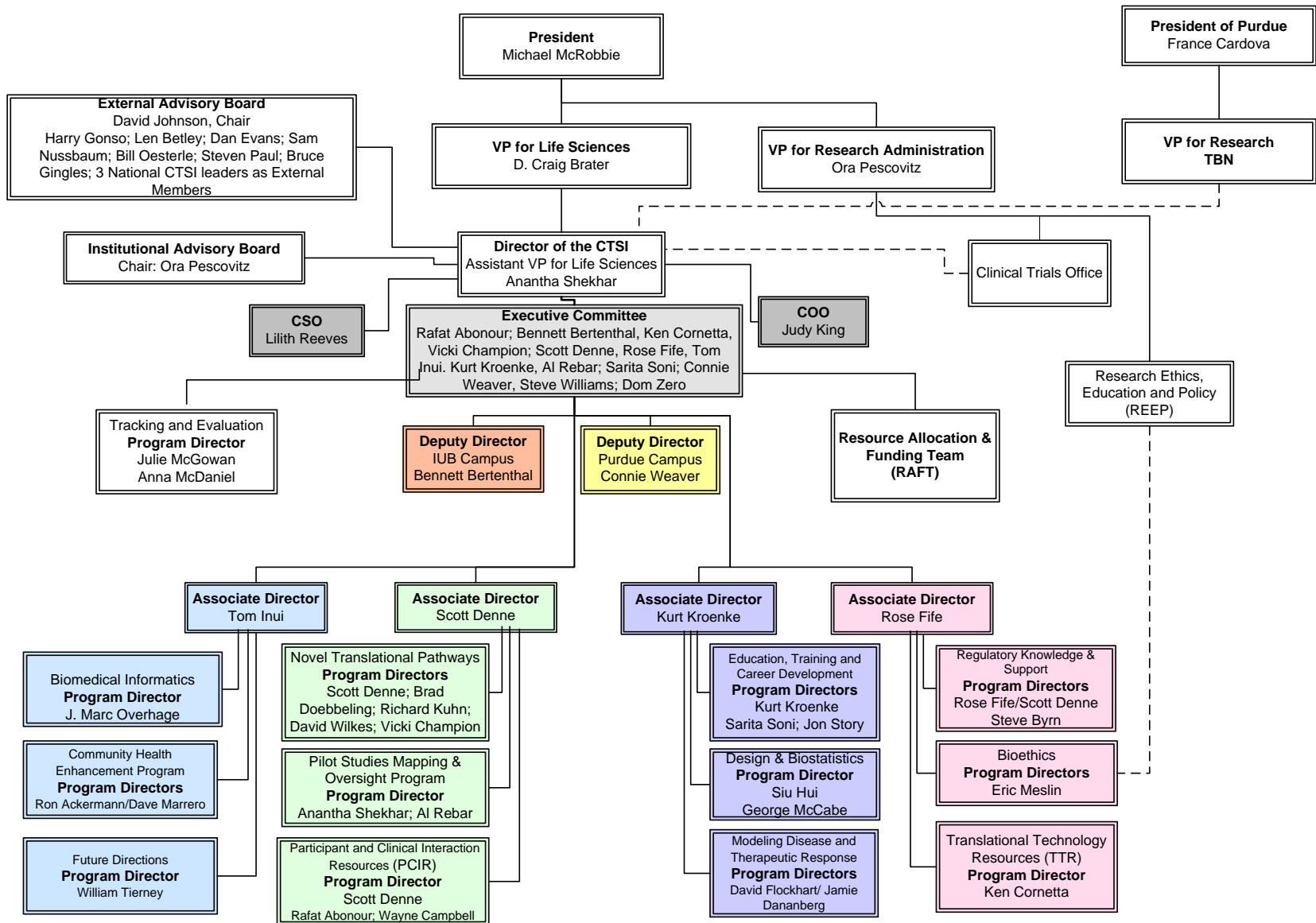


# Indiana CTSI Governance

1. Internal organizational chart
2. External Advisory Board



# Indiana Clinical and Translational Sciences Institute (CTSI) Organization Chart



# Indiana Clinical and Translational Sciences Institute (CTSI) Summary

- A statewide laboratory for transforming health sciences research and health care delivery
- Part of National Institutes of Health new "Roadmap" initiative
- Funded by Clinical Translational Science Awards and leveraged partnerships
- Replaces longstanding General Clinical Research Centers and related awards
- I-CTSI investment scope: NIH \$25 million; Partner Institutions \$56 million over 5 years