

In This Issue:

Fall 2010, Vol. 7, Issue No. 1

Welcome

Library Renovation

Fall 2010 Library Hours

May I Bring My Coffee or Lunch into the Library?

WestlawNext™ Available

Introducing Two New Research Databases

Spotlight on "The Making of Modern Law: Legal Treatises" Database

Frequently Asked Questions

Librarian and Staff News

"The law is the witness and external deposit of our moral life. Its history is the history of the moral development of the race."

Oliver Wendell Holmes, Path of the Law, 10 Harvard Law Review 457, 466 (1897).

Welcome

Welcome to the Ruth Lilly Law Library. We hope you will find the Library to be a comfortable setting for your legal research and study.

All staff work very hard to provide you with excellent library support and services. We want to make your law school experience as rewarding as possible and are always happy to help you with your legal research needs and to provide assistance in accessing and using materials and information. When you are learning how to conduct legal research, we expect to see you at the Reference Desk often.

For detailed information about hours, policies, location of materials, electronic database services, etc., please see the Law Library web page at <http://indylaw.indiana.edu/library/library.htm>. To help us better meet your needs, we encourage your comments and suggestions. If you have any problems with Library services or have suggestions for improvement, I am always happy to speak with you in my office in the library, by phone at 274-3411, or via e-mail at juanspac@iupui.edu.

The Law Library staff has been very busy this summer preparing the Library for your use - the addition of new electronic and print materials, the rollout of WestlawNext™ and the first floor renovation project described in this newsletter are just a few examples of the Law Library's efforts. We encourage you to utilize our resources and our services to achieve your educational and research goals. We wish you a happy and successful year.

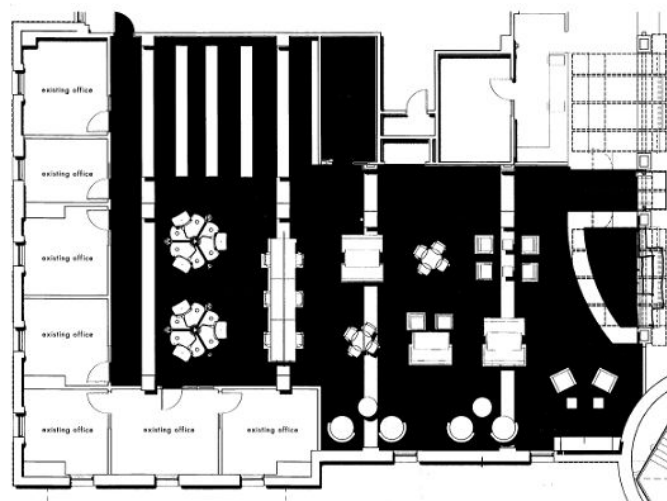
Judith Anspach



Library Renovation

The Reserve Room on the first floor of the Law Library is being renovated to provide a more comfortable space for study and collaborative work. Some print resource materials have been relocated within the Library to create multiple additional seating arrangements and work areas for research and study.

For the duration of the construction period, some print reference resources have been relocated to the corridor and shelving east of the circulation and reference desks. Other print reference resources have been integrated into the monograph collection on the third floor. Library staff will be happy to help you locate any materials previously located in the first floor reserve area.



Although access to Library administrative offices and the reference desk will be impacted during the construction, we have taken steps to minimize disruption to library users. Reference librarians will be available at the circulation desk during regular reference hours and the circulation desk will contact library staff in their offices at the request of library users.

The construction was initially scheduled for completion by August 20, but due to some delays the current estimated completion date is September 7. We apologize for any inconvenience this may cause and ask for your patience throughout the renovation as we create this dynamic new study and work environment.

Fall 2010 Library Hours

Regular Schedule	
Monday - Thursday	8 am - Midnight
Friday	8 am - 11 pm
Saturday	9 am - 9 pm
Sunday	10 am - Midnight

EXCEPTIONS	
Orientation	
Saturday, August 21	8 am - 9 pm
Labor Day Weekend	
Saturday, September 4	9 am - 6 pm
Sunday, September 5	10 am - 6 pm
Monday, September 6	Closed
Fall Recess	
Saturday, October 9	9 am - 5 pm
Sunday, October 10	10 am - 6 pm
Monday, October 11 - Friday, October 15	8 am - 8 pm
Saturday, October 16	9 am - 5 pm
Sunday, October 17	Resume Regular Hours
Thanksgiving Recess	
Tuesday, November 23 - Wednesday, November 24	8 am - 6 pm
Thursday, November 25 - Friday, November 26	Closed
Saturday, November 27	Resume Regular Hours
Final Exam Hours (Monday, November 29 - Monday, December 20)	
Monday, November 29 - Friday, December 3	7 am - 1 am
Saturday, December 4	8 am - Midnight
Sunday, December 5	9 am - 1 am
Monday, December 6 - Friday, December 10	7 am - 1 am
Saturday, December 11	8 am - Midnight
Sunday, December 12	9 am - 1 am
Monday, December 13 - Friday, December 17	7 am - 1 am
Saturday, December 18	8 am - Midnight
Sunday, December 19	9 am - 1 am
Monday, December 20	7 am - 6 pm
Winter Break Hours	
Tuesday, December 21 - Thursday, December 23	8 am - 5 pm
Friday, December 24 - Sunday, December 26	Closed
Monday, December 27 - Thursday, December 30	8 am - 5 pm
Friday, December 31 - Saturday, January 1	Closed
Sunday, January 2	11 am - 6 pm
Monday, January 3 - Friday, January 7	8 am - 8 pm
Saturday, January 8	9 am - 8 pm
Sunday, January 9	Resume Regular Hours

May I Bring My Coffee and Lunch Into the Library?

The Law School community is encouraged to use the Law Library as a place for research, study, reflection, and leisure. To promote a welcoming environment, and for the comfort and convenience of our patrons, the Law Library does allow food in some areas of the Library. This policy endeavors to accommodate our users and to encourage the use of Library resources while protecting the Library's collection and technology. In order to maintain a pleasant and comfortable environment for everyone, while protecting Library materials and furniture, some restrictions on food and drink are necessary. This food and drink policy does not extend to the computer labs.

Beverages are permitted in all areas of the Library if they are in travel-type cups with secure, sealed lids, pop-top or pull-top sports bottles. Some food in appropriate containers is permitted in all areas of the Library except for the Reading Room and the Rare Book Room. Meals, hot foods, and any messy or aromatic foods are not allowed. Outside delivery of food to the Library is not permitted. Food and drink should not be left unattended or uncovered; any food left unattended will be removed and discarded. Library personnel retain the right to decide if a food item falls within the permitted food items or not. Please note that users who bring in food that disrupts their fellow users' study will be asked to remove such food from the Library.

Patrons are expected to clean up after themselves by placing food refuse in the appropriate receptacles. Containers for recyclable bottles and cans are located on each floor of the Library. In the event of spills, clean-up supplies are available at the Circulation Desk. In order for us to continue to allow the privilege of having food and drinks in the Library, your help in needed is keeping the risk of damage to Library property to a minimum. The key to success will be the willingness of Library users to be responsible in their choice of foods and beverages, properly disposing of trash and recyclables, and help clean up any spills.

WestlawNext™

The Law Library now provides access to WestlawNext, the new research tool from Westlaw®. You will be able to access WestlawNext directly from the Westlaw® link on the Law Library website, as well as from the link to WestlawNext™ documents within courses on The West Education Network® (TWEN®).

To Access WestlawNext: Simply log-in to www.lawschool.westlaw.com using your OnePass Username and Password. At the top of the Home page you will see a WestlawNext link at the top of the screen. No other customer action is necessary. Faculty and staff will have access to both Westlaw and WestlawNext. Please remember that not all of the documents found on Westlaw can be found on WestlawNext.



WestlawNext Online Training Opportunities: There are three new WestlawNext Side-by-Side tutorials on the new Training tab. The Training tab link can be found on the Home page after signing on to www.lawschool.westlaw.com at the top of the screen. You can also access the tutorials by clicking the following link: <http://lawschool.westlaw.com/shared/marketinfo/display.asp?code=WT&id=1>.

Printing WestlawNext Documents: WestlawNext documents currently cannot be printed to Westlaw printers. They can be printed to an attached printer, emailed, downloaded or saved to a folder within WestlawNext. A user can also retrieve the document they found on WestlawNext on Westlaw, and then print the Westlaw document to a Westlaw printer as needed.

Introducing Two New Research Databases

The Making of Modern Law: U.S. Supreme Court Records and Briefs, 1832-1978 and **Congressional Digital Collection: Committee Prints and CRS Reports** are two new online resources available at the Law Library. Both databases are accessible from the library website.

The Making of Modern Law: U.S. Supreme Court Records and Briefs, 1832-1978

provides full text access to official court filings for over 100,000 court cases from the court under Chief Justice John Marshall through the early years of the court under Chief Justice Warren Earl Burger. The database includes official court documents but does not include the Court's rulings, opinions or decisions. Some cases consist of a few documents, while others may include dozens of documents. Each case includes an index of related documents.

The types of materials in the database from the case records include: Appellant and Appellee Briefs; Appendix; Application for Review; Application for Writ; Brief for the U.S.; Brief in Opposition; Brief of Real Party; Intervener's Brief; Joint Appendix; Jurisdictional Statement; Letter Brief; Opposition for Review; Oral Transcript; Petition; Petition for Rehearing; Petitioner's Brief; Petition for Writ of Certiorari; Relator's Brief; and Supplement to Petition.

Searching: The basic and advanced search screens allow for searching by case name, document type, docket number, opinion date, author or citation.

Results: Users have the ability to link directly from search results to the actual

records. Digital facsimiles, or images of the document's pages are presented and may be viewed on screen, saved (or marked) for later reference, printed and InfoMarked for future use, such as reading lists or directing other researchers to a specific search. Within these results, the user may search with advanced page navigation options by entering a page number or choosing from a list of pages that have a match for the search term entered.



Access the Database: Access to the database is provided via the Electronic Resource link on the Law Library website at [U.S. Supreme Court Records and Briefs, 1832 - 1978](#).

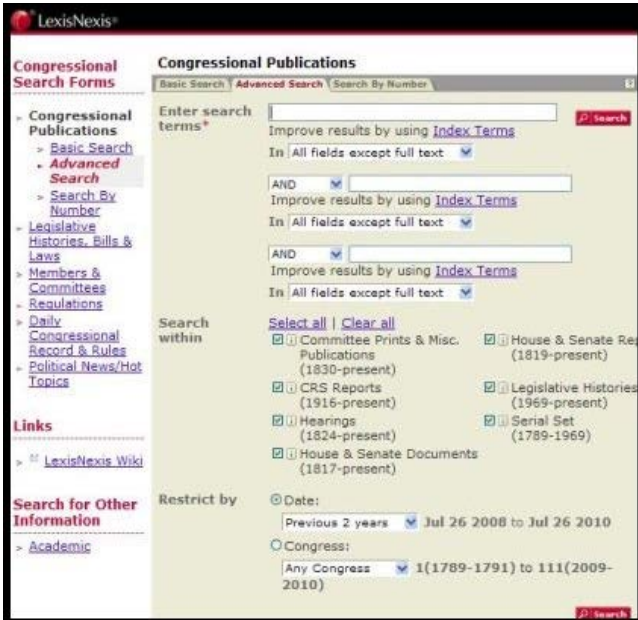
Congressional Digital Collection: Committee Prints and CRS Reports provides systematic access to U.S. Congressional committee prints and Congressional Research Service (CRS) Reports for the period 1830 through 2003.

Committee prints include monograph studies on topics of public concern, investigative field reports, bill analyses, staff memoranda and reports, departmental reports, directories, bibliographies and other reference materials, statistical compilations, hearing and testimony transcripts, and preliminary and draft reports and bills.

The CRS was established within the Library of Congress to provide members, committees, and congressional staff with nonpartisan and objective research and analysis on all public policy issues. CRS reports provide in-depth research and background information for members of congress and their staff. CRS authors are subject specialists that prepare materials in one of the following divisions: American Law; Domestic Social Policy; Foreign Affairs, Defense and Trade; Government and Finance; Resources, Science and Industry; and Knowledge Services.

Committee prints and CRS reports inform and provide both background and legislative research. The database maps documents to bill numbers, public laws and Statutes at Large, enabling researchers to use narrow search terms and strategies.

Searching: Select the "Advanced Search Tab" on the LexisNexis Congressional opening page. The shared interface enables users to search multiple digital collections at once.



Access the Database: Access to the database is provided via the Electronic Resource link on the Law Library website at [LexisNexis Congressional](#).

Spotlight on “The Making of Modern Law: Legal Treatises” Database

The Making of Modern Law: Legal Treatises, 1800-1926 (MOML) is a digital reference source for historical and contemporary legal studies. MOML includes literature from famous legal commentators of the nineteenth and early twentieth centuries, such as Austin, Bentham, Blackstone, Chitty, Holmes, Kent, Maine, and Story. Using MOML, researchers can quickly and easily trace the evolution of modern law in Britain and the United States during these periods. MOML covers all aspects of American and British law and legal history.

The MOML features a searchable database of more than 10 million digital facsimiles of pages from 22,000 Anglo-American legal works from 1800 through 1926, including casebooks, local practice manuals, form books, pamphlets, letters, and speeches. Unlike trial transcripts or a collection of laws, MOML Treatises are secondary source materials that analyze and examine the law, usually a specific law or subject area. Many legal treatises were published in the nineteenth century, covering every aspect of law. But the number of copies printed and circulated was limited, and the numbers retained by libraries was small. The main body of these materials is no longer available in reprints. As a result, very few libraries contain significant holdings of these materials until now.

MOML provides researchers with an interdisciplinary context to the study of law. The collection is of interest to faculty and students

interested in business and economics, criminology, domestic and international law, education, labor and social welfare, legal history, military justice, national defense, politics and government, and religion. With full-text search capabilities, researchers can now conduct efficient searches and comparative research in every area of law.

Searching: An easy-to-use interface allows quick access to the legal information using a keyword search or a subject search. Researchers can also use a subject search analysis to find information because MOML information is divided into 99 distinct subjects.

Searches may also be limited to a few legal topics, ranging from Accounting to Unincorporated Associations. Scholars can search by keyword, full-text, author, title, date, subject, source library and more. Search results presented in list format enable users to link to more detailed records and to the digital facsimile of the book pages themselves.

Access the Database: Access to the database is provided via the Electronic Resource link on the Law Library website at [Making of Modern Law](#).



Frequently Asked Questions

Q. How do I access databases from off-campus?

A. Some online resources are restricted to “in the library” use only, due to the vendor’s licensing agreement, but many of the Library’s databases may be accessed remotely. When you select the resource you want to use, you will be presented with an authentication page, requiring you to input your Indiana University ID and password.

Another method of authentication is to log in through a VPN (Virtual Private Network). Logging in through a VPN allows your computer to be recognized as if you were on campus and can save you from having to login every time you access campus online resources. The easiest way to set up a VPN on your computer is to use the VPN installers provided by UITS: <http://iuware.iu.edu/list.aspx?id=134>.

Librarian and Staff News

Catherine Lemmer, joined the law library faculty as Head of Information Services in June. She will teach legal research and provide reference and research support services to all law library users. Prior to joining the law library faculty, she was the Project Manager for *Evergreen Indiana*, an 85 member consortium implementing a state-wide open source integrated library system initiative in partnership with the Indiana State Library. She was also a corporate lawyer with the Chicago law firm of Vedder Price P.C., and an assistant director and reference librarian at a public library. Lemmer holds a B.A. (*magna cum laude*) from Lawrence University, an M.S. from University of Illinois and a J.D. (*cum laude*) from the University of Wisconsin and is a member of the *Order of the Coif*, *Phi Beta Kappa*, *Beta Phi Mu*, and various professional associations.

Chris Long, Catalog Librarian; Steve Miller, Reference Librarian; and Catherine Lemmer, Head of Information Services, attended the 103rd Annual Meeting of the American Association of Law Libraries in Denver, CO held July 10-13.

Ruth Lilly Law Library
Lawrence W. Inlow Hall
530 West New York Street
Indianapolis, Indiana 46202-3325
Reference Desk - (317) 274-4026
Circulation Desk - (317) 274-4028

Hours are posted on the website and in the library.

Library hours - <http://indylaw.indiana.edu/library/hours.htm>
Reference hours - <http://indylaw.indiana.edu/library/libservices.htm#RefHours>