

# IU GERIATRICS e-news June 2009

A newsletter from [IU Geriatrics](#) and the [IU Center for Aging Research](#)

## Chad Weaver Receives Darnell Medical Student Geriatrics Achievement Award

Chad H. Weaver, MD, a recent IU School of Medicine graduate, has received the Dr. Jeffrey C. Darnell Medical Student Geriatrics Achievement Award for 2009. The award recognizes a medical student for outstanding service and leadership in the care of older adults and was created in 2006 to honor the founding father of geriatrics at IU, **Dr. Darnell**, for his dedication and 31 years of service to his patients and to IU Geriatrics.

Dr. Weaver worked on multiple research projects from 2007 to 2009 with mentors in geriatrics and dermatology including Drs. Jeffrey Travers, Stephen Wolverton, Margaret Gaffney and **Douglas K. Miller**. His projects involved a literature review of geriatric dermatology, a study of access to care for the elderly in dermatology, and a comparison of prices in topical medications over time.

In addition, Dr. Weaver assisted multiple elderly and homebound individuals with transportation to physician appointments, matched patients with social organizations to improve their well-being and aided multiple nursing homes in communication with Spanish-speaking patients.

Dr. Weaver received an engraved crystal keepsake, and his name will join other honored recipients listed on a Darnell Award perpetual plaque located in the Medical Science Building.

Following the completion of a residency in dermatology at the Mayo Clinic-Rochester, Dr. Weaver will develop a one-year fellowship to pursue his interest in geriatric dermatology through the Mayo Clinic.

The presentation was made on June 5 and coincided with the IU Department of Medicine Grand Rounds lecture, "Innovative Models of Providing and Coordinating Care for Older Australians," by **Steven Counsell, MD**, director of IU Geriatrics.



Drs. Chad Weaver, Jeff Darnell, Glenda Westmoreland

## Center for Aging Research Website Moves to [medicine.iupui.edu/IUCAR/](http://medicine.iupui.edu/IUCAR/)

Renovate, refurbish, repair, refit — together they describe a major overhaul of the IU Center for Aging Research website.

IU-CAR Program Manager for Communications **Nancy Buchanan, MA**, updated the content and added new information to highlight the Center's research activities and investigators. Department of Medicine Manager of Systems Development Donald Smith, Christopher Kellams and department programmers moved the center's site into the IU School of Medicine visual fold.

Web pages describing the Center's research innovations, investigators' extramural research, and the Indianapolis Interventions and Practice Research Infrastructure Program are among the features Ms. Buchanan added to the new site.

Visitors will find old favorites such as a list of the center's publications, a description of pilot projects funded by the IU-Roybal Center, and an archive of IU Geriatrics e-news issues.

A new section that's in the works will describe the Center's leadership and professional development program. Updated content will be added to the Geroinformatics Program pages.

Visit the IU-CAR site, bookmark the URL and return to see what's new. We welcome your comments and suggestions via [email](mailto:).

INDIANA UNIVERSITY  
SCHOOL OF MEDICINE | DEPARTMENT OF MEDICINE  
CENTER FOR AGING RESEARCH  
Regenstein Institute | IU Geriatrics | Division of General Internal Medicine & Geriatrics | Department of Medicine

HOME  
IU-CAR OVERVIEW  
FACULTY AND STAFF  
RESEARCH  
IU ROYBAL CENTER  
GERO-INFORMATICS PROGRAM  
IP-RISP  
IU-CAR NEWS  
CONTACT US

### Indiana University Center for Aging Research

#### IU-CAR Hosts 2009 MSTAR Scholar

When Indiana University medical student Jessica Brown searched for a 2009 summer experience to match her interests in research and geriatrics, she found a perfect fit in the Medical Student Training in Aging Research Program.

Known as **MSTAR**, the competitive national program provides medical students with an enriching experience in aging-related research and geriatrics under the mentorship of top experts in the field.

Working with MSTAR research mentor Chris Callahan, MD, Ms. Brown is exploring the correlation between late life depression and negative cardiovascular events over a 15-year time period. She is using data collected in local electronic medical records from patients who completed a depression screening in the early 1990's. Joining Ms. Brown and Dr. Callahan on the project are IUPUI Assistant Professor of Psychology Jesse Stewart, PhD, and biostatistician Tim Stump, MA.

A goal of the national MSTAR program is to introduce students to academic experiences that they might not otherwise have during medical school. In addition to conducting a research project, IU MSTAR scholars participate in structured didactic experiences, shadow IU Geriatrics clinicians in outpatient and inpatient settings, and the scholars interact and network with IU Geriatrics faculty members and IU-CAR investigators and staff.

Working in a research setting isn't new to Ms. Brown. She completed two research internships at the IU Medical Center during her undergraduate career and vowed to get a PhD and do genetics research. Following graduation, she conducted research in the Integrative Biology Department's imaging division at Eli Lilly and Company, but she also recalled a senior undergrad research project and recognized its similarities to clinical research as well as its professional and personal appeal.

Ms. Brown notes, "I worked with older adults in a day center and developed a stronger interest in neurodegenerative diseases. I was able to observe the impact my project had on the elderly and realized that I would enjoy seeing patients and doing research. I felt attending medical school would better fulfill my interests."

She adds, "I really love geriatrics and neurology. I think that no matter what area of medicine I choose it will involve the elderly."

#### News and Events

Welcome to the IU Center for Aging Research website. Add a new bookmark and revisit the site!  
[IU Geriatrics May e-news is available online.](#)

Weiner Publishes Study on Web-based System to Improve Scheduling of Outpatient Specialty Consultations.  
[Read abstract...](#)

Commonly Used Medications May Produce Cognitive Impairment in Older Adults. [Read story...](#)

IU Geriatrician Describes 7-Year Experience Building and Sustaining House Calls for Seniors Program. [Read abstract...](#)

**AAH**  
African American Health Initiative

Miller Describes Antecedents of Global Decline in Health-related Quality of Life among Middle-aged African Americans. [Read abstract...](#)

IU | IUPUI | Disclaimer | Privacy Policy | Webmaster  
Copyright 2009. The Trustees of Indiana University. Copyright Complaints  
Last Updated On: July 01, 2009  
500 N. University Blvd., Indianapolis, IN 46202 | (317) 278-8741

### Presentations and Professional Activities

**Steve Counsell, MD** was invited to Washington, DC on March 13, 2009, to participate in a health policy workgroup on "Building Consumer and Physician Consensus Around Physician Payment Reform" co-sponsored by the Institute of Medicine, American Board of Internal Medicine, and AARP. Dr. Counsell provided insights about physician payment for care coordination and geriatric assessment that were gleaned from his studies in Australia as a Packer Policy Fellow.

**Malaz Boustani, MD, MPH**, was a featured panelist at the 8th Annual Indiana Cultural Competency Conference for Behavioral Healthcare in Indianapolis on May 28, 2009. Consistent with the conference theme of Embracing Cultural Competency: Best Practices, Dr. Boustani described Wishard's Healthy Aging Brain Center, its collaborative care model, and the steps used to translate research discovery into real world health care delivery. The Center's model promotes partnering with the community to improve the recognition and treatment of dementia in older adults.

The conference was sponsored by the Indiana Minority Health Coalition, Indiana Family and Social Services Administration and the Indiana State Department of Health.

**Michael Weiner, MD, MPH**, was senior author on an oral abstract presented at the 32<sup>nd</sup> Annual Meeting of the Society of General Internal Medicine held in May in Miami Beach, Florida. First author and 2008-2009 Geriatrics Fellow Mohamed Homsy, MD, presented "Implementation of geriatrics consultants' recommendations about patients hospitalized on a general medicine service." Local co-authors were **Stephanie Munger, MPH, Bridget Fultz, MA, Chris Callahan, MD, and Ella Bowman, MD, PhD**.

**Michael Weiner, MD, MPH**, was a co-author on a poster, "Physical function and the concomitant use of anticholinergic antihistamines and cholinesterase inhibitors among Medicaid recipients with dementia," presented at the 14th Annual International Meeting of the International Society for Pharmacoeconomics and Outcomes Research held in May 2009 in Orlando, Florida. The meeting attracted over 2,000 attendees and featured a record number of over 1,400 presentations.

**Alexia M. Torke, MD, MS**, presented a poster, "Hospice and palliative care services for patients with dementia: a national survey," at the 32<sup>nd</sup> Annual Meeting of the Society of General Internal Medicine held in May in Miami Beach, Florida. The senior author was **Greg Sachs, MD**, with local co-authors **Laura Holtz, BS, Siu Hui, PhD, and Pete Castelluccio, MS**.

Dr. Torke served on the medical humanities and ethics workshop review and abstract review committees for the annual meeting. She also chaired a breakfast meeting of the Ethics and Humanities Interest Group.

**Steve Counsell, MD** as first author presented an oral abstract entitled, "Cost Analysis of the Geriatric Resources for Assessment and Care of Elders (GRACE) Model of Primary Care", on May 15 in the Health Policy Abstract Session at the 32<sup>nd</sup> Annual Meeting of the Society of General Internal Medicine held in Miami Beach, Florida. Local co-authors were **Chris Callahan, MD, Wanzhu Tu, PhD, Tim Stump, MS, and Greg Arling, PhD**.

**Tamilyn Bakas, DNS, RN**, made an oral presentation of "Does Stroke Caregiver Psychosocial Distress Vary Across Cultures?" at the 2009 American Stroke Association International Stroke Conference held in San Diego, California in February. She also presented an oral "Stroke Advocacy Update" at the Nursing and Rehabilitation Professions Roundtable held at the Stroke Conference.

**Tamilyn Bakas, DNS, RN** and **Linda Williams, MD** were co-authors of "Relationship of Threat Appraisal to Post-stroke Depressive Symptoms," an oral presentation made at the 2009 American Stroke Association International Stroke Conference in San Diego in February.



Dr. Boustani



Dr. Weiner



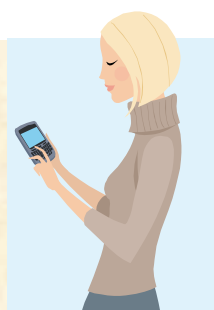
Dr. Torke

### IU Geriatrics Conferences Summer Schedule

WHAT: **Systematic Evidence Reviews of an Aging Research Topic presented by Residents**

WHEN: Wednesdays, July 22 and August 19, 7:30 - 8:30 am

WHERE: Wishard T2008A/B



### Publications



Congratulations to **Robin Beck, MD**, on her first publication as the lead author. Dr. Beck is medical director of Senior Care at Wishard and its [House Calls for Seniors](#) program. In this photo, she joins the publication's senior author, **Chris Callahan, MD**, as they plan the next House Calls manuscript.

Beck RA, Arizmendi A, **Purnell C, Fultz BA, Callahan CM**. [House Calls for Seniors: Building and Sustaining a Model of Care for Homebound Seniors](#). J Am Geriatr Soc. 2009 Jun;57(6):1103-9.

**Weiner M**, El Hoyek G, Wang L, Dexter PR, Zerr AD, Perkins AJ, James F, Juneja R. [A Web-based Generalist-Specialist System to Improve Scheduling of Outpatient Specialty Consultations in an Academic Center](#). J Gen Intern Med. 2009 Jun;24(6):710-5.

**Terrell KM**, Hustey FM, Hwang U, Gerson LW, Wenger NS, **Miller DK**; on behalf of Society for Academic Emergency Medicine Geriatric Task Force. [Quality Indicators for Geriatric Emergency Care](#). Acad Emerg Med. 2009;16:441-9.

**Bakas T**, Farran CJ, Austin JK, Given BA, Johnson EA, **Williams LS**. Stroke caregiver outcomes from the Telephone Assessment and Skill-Building Kit (TASK). Topics in Stroke Rehabilitation. 2009 Mar-Apr;16(2):105-21.

**Schmid AA**, Rittman M. [Consequences of poststroke falls: activity limitation, increased dependence, and the development of fear of falling](#). Am J Occup Ther. 2009 May-Jun;63(3):310-6.

Justiss MD, **Boustani M**, Fox C, Katona C, Perkins AJ, Healey PJ, **Sachs G, Hui S, Callahan CM, Hendrie HC**, Scott E. [Patients' attitudes of dementia screening across the Atlantic](#). Int J Geriatr Psychiatry. 2009 Jun;24(6):632-7.

Kroenke K, Bair MJ, **Damush TM**, Wu J, Hoke S, Sutherland J, **Tu W**. [Optimized antidepressant therapy and pain self-management in primary care patients with depression and musculoskeletal pain: a randomized controlled trial](#). JAMA. 2009 May 27;301(20):2099-110.

Hansen RA, Kim MM, Song L, **Tu W**, Wu J, Murray MD. [Comparison of methods to assess medication adherence and classify nonadherence](#). Ann Pharmacother. 2009 Mar;43(3):413-22.

Murray MD, Ritchey ME, Wu J, **Tu W**. [Effect of a pharmacist on adverse drug events and medication errors in outpatients with cardiovascular disease](#). Arch Intern Med. 2009 Apr 27;169(8):757-63.

Ichikawa S, Sorenson AH, Austin AM, Mackenzie DS, Fritz TA, Moh A, **Hui SL**, Econs MJ. [Ablation of the Galnt3 gene leads to low-circulating intact fibroblast growth factor 23 \(Fgf23\) concentrations and hyperphosphatemia despite increased fgf23 expression](#). Endocrinology. 2009 Jun;150(6):2543-50.