

THE
INDIANA
DENTAL COLLEGE
ANNOUNCEMENT

Thirteenth Annual Session

Term 1891 and 1892.

Aetna Block, Pennsylvania Street, corner Court Street,

INDIANAPOLIS, INDIANA.

TRUSTEES.

S. B. BROWN, M. D., D. D. S., *President*,
FORT WAYNE, IND.

P. G. C. HUNT, M. D., D. D. S., *Vice-President*,
INDIANAPOLIS.

M. WELLS, D. D. S., *Treasurer*,
INDIANAPOLIS.

J. N. HURTY, M. D., Ph. D., *Secretary*,
INDIANAPOLIS.

E. J. CHURCH, D. D. S.,
LAPORTE, IND.

T. S. HACKER, D. D. S.,
INDIANAPOLIS, IND.

ROBT. VAN VALZAH, D. D. S.,
TERRE HAUTE, IND.

GEO. EDWIN HUNT, D. D. S.,
INDIANAPOLIS.

S. T. KIRK, D. D. S.,
KOKOMO, IND.

EXECUTIVE BOARD.

P. G. C. HUNT, M. D., D. D. S.,	- - -	CHAIRMAN.
MERIT WELLS, D. D. S.,	- - -	TREASURER.
J. N. HURTY, M. D., Ph. D.,	- - -	SECRETARY.

FACULTY.

T. S. HACKER, D. D. S.,
Professor *Mechanical Dentistry*.

M. F. AULT, M. D., D. D. S.,
Professor *Physiology and Histology*.

JUNIUS E. CRAVENS, D. D. S.,
Professor *Operative Dentistry, Developement and Pathology of the
Teeth*.

A. C. KIMBERLAIN, M. D.,
Professor of *Anatomy*.

GEO. E. HUNT, D. D. S.,
Professor *Materia Medica*.

J. N. HURTY, M. D., Ph. D.,
Professor *Chemistry and Metallurgy*.

J. H. OLIVER, M. D.,
Professor of *Oral Surgery and Pathology*.

ALEMBERT W. BRAYTON, M. D., B. S.,
Professor *Biology, and Microscopy*.

H. S. HICKS, D. D. S.,
Demonstrator *Mechanical Laboratory*.

E. E. REESE, D. D. S.,
Demonstrator *Operative Dentistry*.

SPECIAL LECTURERS AND DEMONSTRATORS.

S. B. BROWN, M. D., D. D. S., Fort Wayne, *Ethics of the Profession, Written and Unwritten.*

M. WELLS, D. D. S., Indianapolis, *Conduct of Dental Practice.*

ROBERT VAN VALZAH, D. D. S., Terre Haute, *Special Demonstrations.*

E. J. CHURCH, D. D. S., Laporte, *Special Demonstrations.*

S. T. KIRK, D. D. S., Kokomo, *Special Demonstrations.*

A. J. SMITH, D. D. S., Greenfield, *Care of Young Patients.*

M. H. CHAPPEL, D. D. S., Knightstown, *Dental Pathology, Therapeutics.*

W. B. FLETCHER, M. D., Indianapolis, *Dentistry in its Relation to Nervous Diseases.*

D. A. THOMPSON, M. D., Indianapolis, *Nervous Reflexion, Teeth, Eye and Ear.*

L. H. DUNNING, M. D., *Maternity and its Relation to the Teeth.*

ROBT. T. OLIVER, *Special Lecturer on Prosthetic Dentistry.*

An ample corps of Assistant Demonstrators of Practical Dentistry will be supplied.

The students of this College will be admitted to the Clinical Lectures at the City Hospital throughout the term.

Arrangements have been made for Dental and Oral Surgery Clinics at the Hospital.

INDIANA DENTAL COLLEGE, INDIANAPOLIS. 1891-1892.

The course extends over three years, JUNIOR, INTERMEDIATE and SENIOR. A preliminary session will open Tuesday, September 1st, 1891, and will continue one month. The *regular session* begins Thursday, October 1st, and will continue five months, closing the first Friday in March, 1892.

Attendance upon the preliminary session is not obligatory, but students are strongly urged to avail themselves of its advantages. This session is free to all.

ADMISSION.

All candidates for admission not possessing a high-school diploma or its equivalent from some recognized school, must pass an entrance examination in the common English studies.

Graduates of all recognized medical colleges are entitled to enter the second year without examination.

No student will be received after October 10th.

Students holding certificates of attendance and examination from colleges belonging to the National Association of Dental Faculties, may enter the Intermediate or Senior year, according as their certificates may entitle them.

GRADUATION.

The candidate for graduation must have attended three full winter courses of lectures, the last of which shall have been at this college. He must be of adult age, and of good moral character.

He must pass all the required examinations, and convince the Professors of Operative and Mechanical Dentistry of his ability to meet satisfactorily the requirements of his art.

He must prepare a specimen case of artificial dentistry to be deposited in the college collection.

The degree of Doctor of Dental Surgery, (D. D. S.,) will be conferred upon all applicants who have fully met the above requirements.

COLLEGE FEES.

Junior Year (first year)	-	-	-	\$100.00
Intermediate Year (second year)	-	-	-	100.00
Senior Year (third year)	-	-	-	100.00
Graduation Fee	-	-	-	25.00

There are no extras in this college, the above fees covering dissecting materials, laboratory apparatus and chemicals, and all other incidentals to a full course. Payment is required in advance.

JUNIOR AND INTERMEDIATE YEARS.

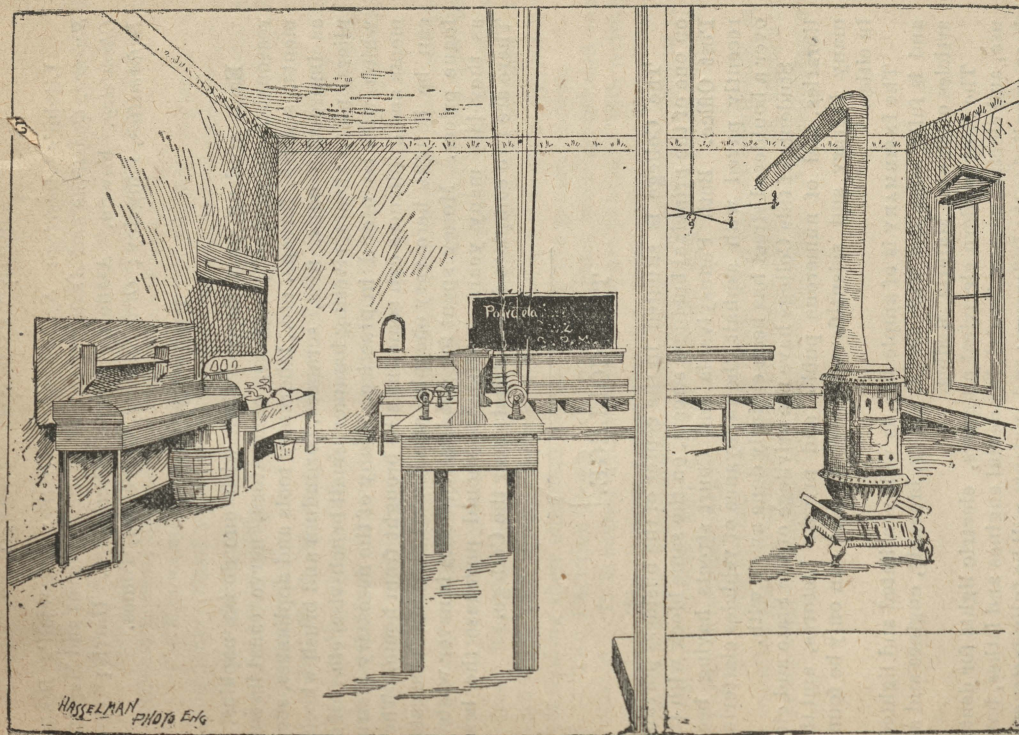
EXAMINATIONS.

Monthly examinations will be held in all classes. By this means weak points are discovered, and fuller individual training may be given. At the end of each term final examinations will determine fitness for advancement, and in the event of being found competent the student will, on commencement day, be given a certificate which entitles him to enter the Intermediate or the Senior class as the case may be, in all dental colleges belonging to the National Association of Dental Faculties.

TEXT-BOOKS.

Taft's Operative Dentistry; Richardson's Mechanical Dentistry; Wedl's or Salter's or Coleman's Dental Pathology; Dalton's or Yoe's Physiology; Gray's or Weisse's Anatomy; Talbot's Irregularities of the Teeth, or Guilford's Orthodontia; Gorgas' Dental Medicine; Essig's Dental Metallurgy; Mitchell's Chemistry.

Text-books may be purchased at Dental Depot in this city at a discount of ten per cent. from list prices.



A CORNER OF MECHANICAL LABORATORY.

BOOKS FOR REFERENCE.

Litche's *American System of Dentistry*; Ingersoll's *Dental Science, Questions and Answers*; *Dental Follicle*, Ligros and Magitot *Chemistry*, Fowne, Attfield; *Dental Dictionary*, Harris; *Oral Deformities*, Kingsley; *Oral Surgery*, Garretson, Tomes.

PROPERTIES.

Each student *must* be provided with one dozen napkins, a reasonable amount of pluggers, excavators, nerve canal instruments, scalers, forceps, etc., laboratory tools and appliances, such as impression cups, files, scrapers, corundum and brush wheels, pliers, plate shears, riveting hammer, small bench-vise, etc., all of which will be useful in practice. Many of the necessary instruments and appliances can sometimes be brought from home. They can be bought here very cheaply, at a liberal discount from catalogue prices. Money spent for good instruments is never wasted, as they last many years. Students should purchase the best. There are two complete dental depots near the College.

THE COLLEGE.

The College is situated in the center of the business portion, on one of the principal business streets, on the same block with the Post Office. Both Pennsylvania and Court streets having been recently paved with asphalt, the annoyance of vehicles clattering over a bouldered street has been entirely done away with.

Students of this College have the privilege of the State and city libraries, and of numerous public and private lectures, and the many literary and scientific advantages which can only be found in cities.

THE INFIRMARY is of ample size, is well ventilated and lighted, and is fully supplied with dental chairs, brackets, engines and all articles of Dental Materia Medica.

The most modern electrical pluggers, electric lights for dental use, and electric motors for driving dental engines and lathes, have been supplied to the Infirmary; and students will be fully instructed in the use of all electrical dental appliances.

THE INFIRMARY will be personally supervised by Prof.

Cravens, and Dr. E. E. Reese will conduct demonstrations, with an ample corps of assistants.

This department is open every day of the week except Saturday and Sunday, during the term, and attendance is obligatory.

Abundance of *dental practice* is guaranteed, as several thousand patients present themselves for treatment annually.

The MECHANICAL LABORATORY is large and well lighted. It is completely fitted up with work-tables, lathes, furnaces, vulcanizers and all appliances work and instruction in mechanical dentistry. Lathes are propelled by electricity, and all possible uses of this force are made.

Dr. T. S. Hacker, Professor of Mechanical Dentistry, will personally direct this department, assisted by a strong corps of demonstrators. Crown, Bridge and Porcelain work, is given fullest attention.

THE CHEMICAL LABORATORY has been largely increased and new and valuable apparatus has been added. Each student has his own table and drawers, all apparatus and reagents being furnished free. The Chemical Laboratory is always open and accessible to students, and special opportunity is afforded to those desirous of extending their chemical studies beyond the general course.

THE LECTURE ROOM is an amphitheater, well lighted and ventilated. It is seated with chairs, which are provided with writing boards. The lecture accessories are most complete, including a large electric stereopticon, anatomical, histological, physical and chemical charts, and a large counter specially constructed for objective demonstration.

THE DISSECTING ROOM is large, with perfect ventilation, and supplied with all appointments incident thereto. An abundance of material is provided without extra expense. No demonstrator's fees.

A FULL COURSE IN THIS COLLEGE EMBRACES

OPERATIVE DENTISTRY, DENTAL EMBRYOLOGY, DENTAL PATHOLOGY AND THERAPEUTICS, MECHANICAL DENTISTRY, ORAL DEFORMITIES, ORAL SURGERY, CONDUCT OF DENTAL PRACTICE, CHEMISTRY, ANATOMY, PHYSIOLOGY, DISSECTING, BACTERIOLOGY, METALLURGY.

OPERATIVE DENTISTRY AND DENTAL PATHOLOGY.

The instruction from this chair embraces the consideration of the teeth in a state of health; the causes and treatment of the pathological conditions to which these organs and associate parts are subject; also, a full description of the materials and instruments used in operative dentistry and thorough instruction in all the operations required of the dental practitioner, such as filling, regulating, extracting, replanting, etc.

The theories taught are demonstrated in the Clinical Department, and direct assistance rendered the students in their manipulations.

The Clinics are under the personal care and direction of the Professor, his demonstrators and assistants.

MECHANICAL DENTISTRY.

Instruction in Mechanical Dentistry will embrace everything essential to perfect the student in Prosthetic work. The teachings in the lecture-room will be amply demonstrated in the Laboratory.

The construction of artificial dentures on gold, platinum, silver, aluminium, vulcanite and other bases, will be fully demonstrated.

Especial attention in the future, as in the past, will be paid metal work, and each year the student will receive ample instruction in the same.

Each student is required to furnish his own bench tools for metal and rubber work. The Laboratory is provided with lock-boxes for the safe deposit of tools when not in use.

The various modes of irregularity correction will be demonstrated by means of casts and practical cases.



CHEMICAL LABORATORY.

ANATOMY.

Lectures on anatomy and demonstrations in the dissecting-room will include a consideration of the whole body. Special attention will be given in the lecture course to the entire osseous system, as well as the topographical and surgical anatomy of the head and neck, and such other portions as are of importance to the dentist. Fine imported skulls, (articulated and disarticulated,) are furnished students, free. The dissecting-rooms are well equipped for dissecting the entire body, practical demonstrations being made each evening by the demonstrator. Dissecting-rooms open from 7 to 9 P. M. Material furnished free.

PHYSIOLOGY.

The lectures and other instructions pertaining to this branch presents Physiology, emphasized to meet the particular demands of dental practice. Such appliances, illustrations and experiments are made use of as serve to give the student a clear knowledge of all physiological processes and Histology.

MATERIA MEDICA.

The lectures on this subject include a full history of the botanical or chemical sources of the principal drugs employed in practice; their effect on the different organs; their indications and contra-indications in disease, and their several doses and antidotes. The student is required to familiarize himself with the signs, symbols, abbreviations, etc., and to write, at the quiz correctly indicated prescriptions for given symptoms of disease.

ORAL DEFORMITIES.

Special instruction, with the use of models and practical cases, will be so rendered as to enable the student to comprehend the causes, principles of reduction, or correction of irregularities in arrangement of natural teeth, and deformities of the jaws. This subject will be under the care of the Professors of Operative and Mechanical Dentistry.

ORAL SURGERY AND PATHOLOGY.

The course in general Pathology, with special attention to the localized pathological conditions of interest to the Dental and Oral Surgeon, will be given, followed by didactic and clinical lectures on Oral Surgery, special attention being given to the illustration of the various plastic operations of the mouth and face.

CHEMISTRY.

Chemistry will be taught by lecture, quiz, and actual Laboratory experience.

Such attention will be given to Physics as is useful and necessary to the Dentist.

Chemical Philosophy will be presented as the student advances in a knowledge of reactions, and the chemical properties of matter.

Laboratory work includes experiments illustrating chemical laws and reactions, together with synthesis and analysis.

Animal, Vegetable and Medical Chemistry will be treated as extensively and thoroughly as time and the general progress of the students will permit.

Metallurgy will receive the attention that its importance to the Dentist demands.

The Professor of Chemistry will give special instructions in the principles, construction and care of all kinds of electric batteries.

CROWN, BRIDGE AND PORCELAIN WORK.

The lectures from the chair of Mechanical Dentistry will cover all the essential points of success in these branches of dentistry and will be supplemented by ample practical demonstration in the Infirmary and Laboratory.

The various methods of constructing crowns and bridges will be taught by actual practice. Every year the College has practical cases in this department, and each student is required to construct a specimen piece of work during the session.

Porcelain inlays, block carving and continuous gum work will be ably presented in all their manifold details, and students will have every facility for perfecting themselves in these important branches of the profession.

This work being under the supervision of competent instructors and the College thoroughly equipped with all necessary appliances, the opportunity to master it fully and completely is unrivalled.

CURRICULUM.—OUTLINE FOR EACH YEAR.

JUNIOR YEAR.

OPERATIVE DENTISTRY.—PATHOLOGY AND DEVELOPMENT OF THE TEETH.—Hand studies of Dental Anatomy. Primary Development of the Teeth. Technique.

MECHANICAL OR PROSTHETIC DENTISTRY.—The first half of this term will be devoted to a course in technique of Prosthetic Dentistry, preparatory to the instruction in practical Prosthetic Dentistry which will occupy the latter half of this term. The student who enters College for the first time should not miss the two weeks at the beginning, devoted to obtaining a knowledge of the elements pertaining to Mechanical Dentistry. Elementary work cannot be reviewed and students experience great difficulty in recovering the ground lost at the beginning.

ANATOMY.—Histological, Physiological and Topographical Anatomy. Osteology, excluding that of the head.

PHYSIOLOGY.—Histology of the various tissues of the body, fully illustrated by charts and lantern.

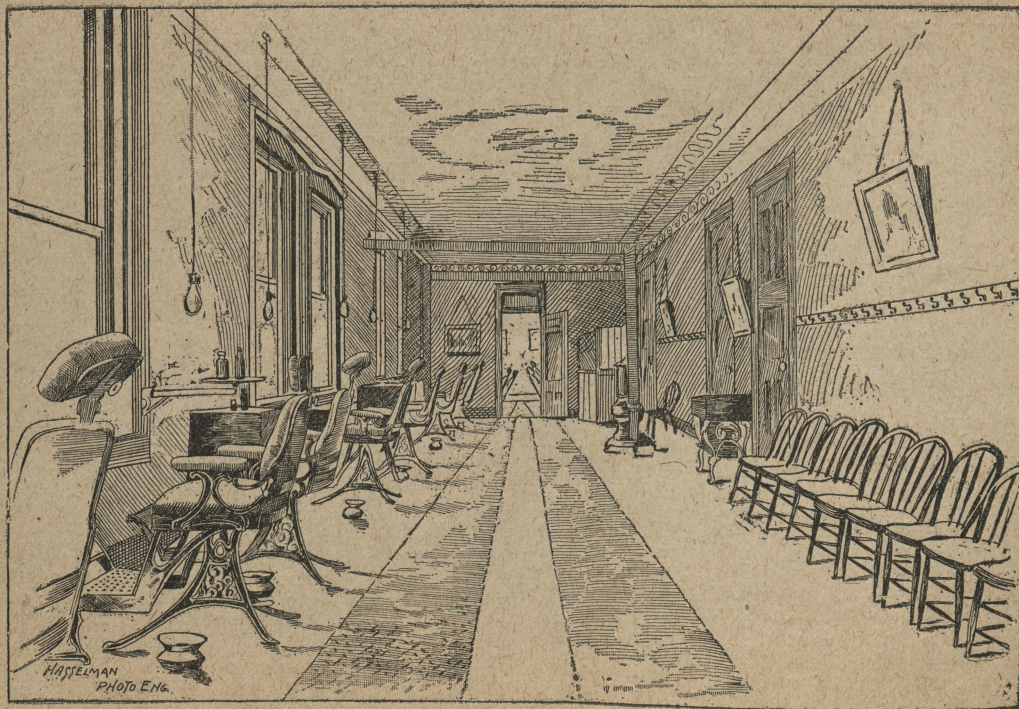
MATERIA MEDICA.—General Materia Medica. Therapeutics. Pharmacy. Keeping of remedies.

CHEMISTRY.—General and fundamental consideration of Light, Heat and Electricity. Metrology. Specific Gravity, Chemical apparatus, kinds, uses, care of same. Chemical processes, namely, solution, precipitation, distillation, sublimation, filtration evaporation, fusion, calcination, incineration, crystalization, etc. Introduction to synthesis and inorganic qualitative analysis.

INTERMEDIATE YEAR.

OPERATIVE DENTISTRY.—Complete development of the teeth. Study of the structure of Dental Tissues. Principles of Operative Dentistry. Technique. Infirmary Practice.

MECHANICAL OR PROSTHETIC DENTISTRY.—During this term the students will review the practical work of the first year; and will be instructed in methods of moulding and



INFIRMARY.

carving wax for representation of the natural gum in rubber and celluloid. Construction of practical cases on rubber and other plastic cases.

ANATOMY.—Review of Junior work. Osteology of the head and the applied anatomy of the brain and cranial nerves. Dissection.

PHYSIOLOGY.—Review. Proximate Principals. Food. Digestion. Respiration. Circulation. Animal Heat. Illustrated Review.

MATERIA MEDICA.—Dental Materia Medica. Dental Therapeutics.

CHEMISTRY.—Advanced Consideration of Light, Heat and Electricity. Voltaic Batteries, kinds, care of same. Synthesis. Crystallography introduced. Inorganic Qualitative Analysis Finished. Chemical Philosophy. Introduction to Organic Chemistry and Metallurgy.

SENIOR YEAR.

OPERATIVE DENTISTRY.—Dental Pathology. Practice of Operative Dentistry. Dental Philosophy. Higher Clinics and Technical Manipulation.

MECHANICAL OR PROSTHETIC DENTISTRY.—The course of instruction during this term will be confined to the higher methods pertaining to Mechanical Dentistry. Students will be afforded opportunity to observe and perform the various manipulations pertaining to construction of sets of teeth on gold plates; to (porcelain) continuous-gum work, and porcelain inlays; to practical cases of gold crowns and bridge-work.

The construction of rubber plates will be omitted entirely from the instruction in this year.

ANATOMY.—Review. Study of the soft parts of the head and neck with surgical anatomy of the same. Dissecting Finished.

PHYSIOLOGY.—Nervous System. Physiology of Anæsthesia and other Dental Therapy. Special Work and Review.

CHEMISTRY.—Chemical Philosophy. Quantitative Analysis. Organic Chemistry. Saliva Analysis. Dental Metallurgy Finished.

BACTERIOLOGY.—Special lectures by Theodore Potter, M. D., M. A., Prof. Bacteriology, Medical College of Indiana.

1. Germs, and the germ theory of disease. Their place in biology and pathology.

2. History and development of the germ theory to its present states.

3. The field and limitations of the germ theory and of germ activity.

4. Proofs of the germ causation of disease.

5. Methods of bacteriological investigation of disease.

6. Cultivation and microscopic examination of bacteria.

7. Classification and description of bacteria from a pathological standpoint.

8. Suppuration and sepsis.

9. Bacteriology of the mouth and neighboring regions.

10. Disinfection, antiseptics and asepsia.

PATHOLOGY.—Special lectures by Alembert W. Brayton, B. S., M. D., Prof. Pathology, Medical College of Indiana.

1. The Microscope.

2. Nature and course of disease.

3. Circulatory disturbances.

4. Inflammation.

5. The Degenerations.

6. Neoplasms, benign and malignant.

7. The Infective Granulomata.

8. Evolution, the general theory.

9. Evolution and disease.

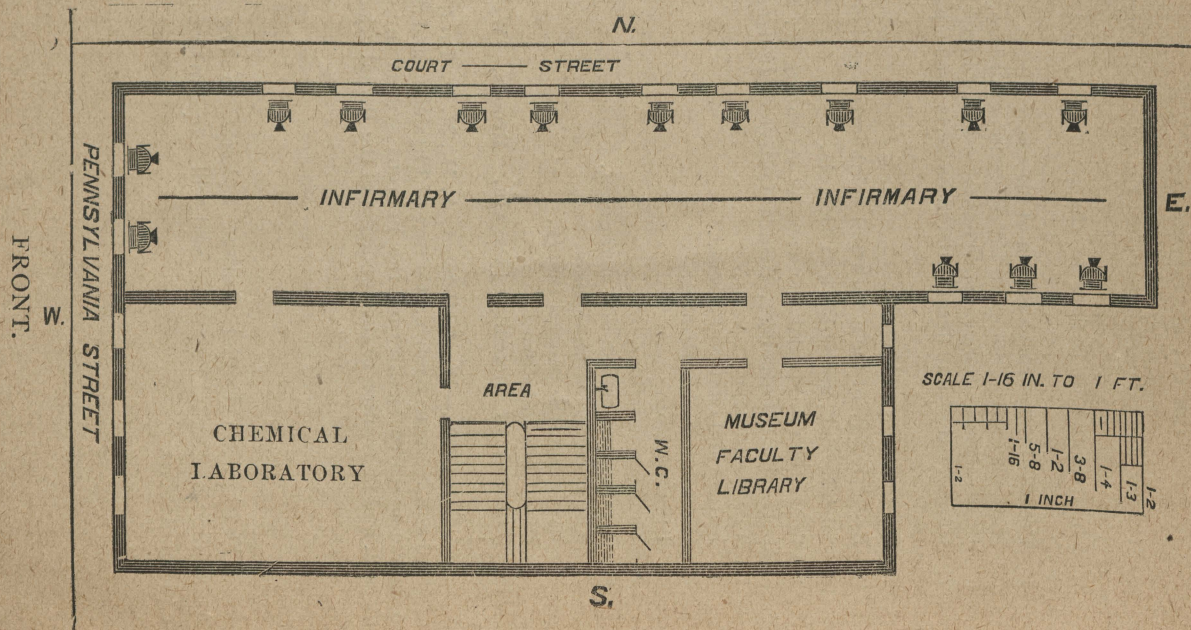
10. Theories of heredity [Darwin, Brooks, Weissmann, Geddes.]

NEUROLOGY.—W. B. Fletcher, A. M., M. D., Prof. Diseases of Mind and Nervous System, College of Physicians and Surgeons. A course of three lectures on the nervous system in health and disease, and its relation to the condition of the dental organs.

The Indiana Dental College belongs to The National Association of Dental Faculties, and will conform to all its rules and regulations.

INDIANA DENTAL COLLEGE.

FIRST FLOOR.



N. SCALE 1-16 IN. TO 1 FT.
COURT STREET

A detailed floor plan of the Pennsylvania State College of Podiatric Medicine building. The plan is oriented with Pennsylvania Street on the left. The main building has a large rectangular section on the left labeled "LABORATORY OF PROSTHETIC DENTISTRY". To its right is a smaller section containing a "SPECIAL CLINIC" with a dental chair icon, an "ANTE-CHAMBER", and a "REST AREA" with a staircase. Further right is a long, narrow section labeled "DISSECTING ROOM" with several rectangular tables. At the bottom right is a semi-circular "LECTURE ROOM" with tiered seating. An entrance labeled "E." is on the right side of the lecture room. The entire building is enclosed by a thick border representing the street and surrounding area.

PENNSYLVANIA STREET.

LABORATORY OF PROSTHETIC DENTISTRY

SPECIAL CLINIC

ANTE-CHAMBER

REST AREA

DISSECTING ROOM

LECTURE ROOM

E.

S.

Each Eloor, East and West,	-	-	-	-	-	-	85 feet.
Each Floor, North and South,	-	-	-	-	-	-	38 feet.

GRADUATES.

TERM OF 1879 AND 1880.

R. W. Van Valzah,	Indiana.
W. E. Swigert,	Indiana.
E. J. Church,	Indiana.

TERM OF 1880 AND 1881.

J. R. Lowe,	Iowa.
J. E. Waugh,	Indiana.
H. H. Depew,	Illinois.
L. J. Allen (<i>dead</i>),	Indiana.
I. B. Rembert,	Mississippi.
J. G. Parsons,	California.
J. C. Walton,	Michigan.
DeW. C. West,	Iowa.
C. A. Pooler,	New York.
L. E. Urich (<i>dead</i>),	Illinois.

TERM OF 1881 AND 1882.

F. M. Harris,	Indiana.
T. R. Woodard,	Indiana.
W. F. Kennedy,	Nebraska.
L. L. Hinshaw,	Indiana.
W. W. Shryrock,	Indiana.
C. A. Murray,	Ohio.
J. L. Mahan,	Ohio.
J. E. Bodine,	Indiana.
D. R. Smith,	Illinois.
R. E. Henshie,	Illinois.
F. W. Blomily,	Dakota.
W. M. Ransdell,	New York.
D. G. Parker,	California.
E. W. Sheriff,	Illinois.
F. Sawhill,	Illinois.

TERM OF 1882 AND 1883.

C. B. Bratt,	Pennsylvania.
J. E. Ratts,	Indiana.
A. Burress,	Illinois.
F. C. Callaghan,	Pennsylvania.

TERM OF 1882 AND 1883.

G. G. Hollister,	Pennsylvania.
J. B. Ribble,	Indiana.
W. S. Wilson,	New York.
E. P. Elson,	Ohio.
A. J. Smith,	Indiana.
C. H. Baldwin,	New Hampshire.
C. H. Funk,	Michigan.
A. L. Smith,	Nebraska.
I. N. Shepherd	Illinois
C. A. Mills,	Ohio.
S. C. Goff,	Wisconsin.
J. S. Basom,	Ohio.
R. Newhouse,	Indiana.
A. E. Bucher (<i>dead</i>),	Indiana.
W. C. Stewart,	Mississippi.
Geo. Stathers,	Pennsylvania.
A. E. Buchanan,	Indiana.

TERM OF 1883 AND 1884.

S. A. Kiser,	Ohio.
O. W. Willis,	Indiana.
A. D. Leach,	Virginia.
J. W. Adams,	Indiana.
R. Elson,	Indiana.
F. C. Ayres,	New York.
H. A. Chandler,	Ohio.
E. A. Gillett,	Indiana.
W. M. Bayless,	Missouri.
J. A. Bowman,	Illinois.
S. M. Kennedy,	Pennsylvania.
T. H. Morgan,	Indiana.
C. C. Curtis,	Indiana.
H. W. Runyan,	Michigan.
H. S. Ainsworth,	Ohio.
C. W. Myers,	Indiana.
D. C. Harrold,	Indiana.
M. J. Kelly,	Iowa.
G. B. Hough,	Pennsylvania.
G. S. Clemens,	Indiana.

TERM OF 1884 AND 1885.

Fred H. Emmerling,	Wisconsin,
Frank H. Horner,	Pennsylvania.
William C. Archer,	Indiana.
William R. Dunn,	Indiana.
William H. Bucher,	Kansas.
Gust. Weinmann,	Pennsylvania.
Marshall M. Keep,	Ohio.
J. Monticello Sprinkle,	Illinois.
John E. Davis,	California.
B. G. Miller,	Michigan.
James W. Prall,	Indiana.
George W. Tainter,	Missouri.
Frank Dowd,	Ohio.

TERM OF 1885 AND 1886.

John H. Palin,	Michigan.
Alfred S. Price,	Kentucky.
Elmer E. Stewart,	Ohio.
James E. Montgomery,	Pennsylvania.
Elmer E. Jones,	Indiana.
Lewis L. Clarke,	Massachusetts.
Roland M. Smiley,	Indiana.
William H. Rowand,	Ohio.
Owen S. Lynn,	Indiana.
Alonzo L. Jones,	Indiana.
William N. Wilson,	Indiana.

TERM OF 1886 AND 1887.

L. G. Bell,	Wisconsin.
Charles Woelz,	Illinois.
Jno. E. Carmon,	Illinois.
John H. Evans,	Indiana.
S. Oliver,	Pennsylvania.
T. J. Hood,	Kentucky.
S. N. Blackledge,	Indiana.
Milton Lamb,	Indiana.
John H. Bird,	Michigan.
Geo. Marbach,	Indiana.
P. W. Earhart,	Indiana.
J. W. Bates,	Michigan.
W. M. Easton,	Michigan.
J. J. Lickley,	Michigan.

TERM OF 1887 AND 1888.

W. J. P. Lawton,	Nebraska.
C. P. Curtis,	Indiana.
J. L. Barnes,	Illinois.
H. S. Hicks,	Indiana.
W. H. Beeson,	Indiana.
E. Reese,	Indiana.
G. W. Raber,	Wisconsin.
J. H. Daugherty.	Indiana.
R. H. Clark,	Michigan.
L. A. Stewart,	Indiana.
W. M. Jones,	Indiana.
J. W. Lopp,	Indiana.
W. A. Alexander,	Illinois.
M. DeF. McKee,	Ohio.
C. J. Lange,	Wisconsin.
J. S. McCurdy,	Indiana.
R. T. Oliver,	Indiana.

TERM OF 1888 AND 1889.

Willard W. Gates,	Indiana.
M. F. Ault,	Indiana.
Harry W. Cole,	Indiana.
Waldo E. Collane,	Indiana.
Peter S. Bower,	Indiana.
Ward E. Bullard,	Indiana.
W. Ellis Wiessell,	Indiana.
John C. Walker,	Kansas.
Charles S. Hardy,	Ontario, Canada.
Frederick H. Reiss,	Illinois.
Bion Moss,	Wisconsin.
Charles K. Raber,	Wisconsin.
William Finn,	Wisconsin.
Sidney W. Curtis,	West Virginia.
George B. Martin,	Michigan.
Robert D. Blakeman,	Kentucky.
Moses P. Niswonger,	Ohio.

THIRTEENTH ANNUAL ANNOUNCEMENT

TERM OF 1889 AND 1890.

E. H. Kieth,	Wisconsin.
B. W. Jones,	Michigan.
E. G. Fry,	Indiana.
A. H. Brown,	Indiana.
J. W. Hess,	Indiana.
C. A. Rowand,	Ohio.
H. B. Tucker,	Indiana.
H. L. Cormican,	Wisconsin.
W. W. Mungen,	Indiana.
R. B. Gentle,	Indiana.
I. N. Sheppard,	Illinois.
G. W. Thompson,	Indiana.
W. L. Tevis,	Indiana.
T. E. Coffin,	Indiana.
Morris Coffin,	Indiana.
N. F. Hazlett,	Indiana.
F. B. Gonzales,	Indiana.
B. Brimacombe,	Ontario, Canada.
L. A. Cox,	Minnesota.
T. H. Davidson,	Indiana.
B. W. Sober,	Illinois.
C. E. Ervin.	Indiana.
E. D. Bailly,	Indiana.
G. E. Hunt,	Indiana.
G. W. Tainter, Jr.,	Missouri.
E. R. Trippe,	Wisconsin.
E. H. Green,	Minnesota.
R. W. Reese,	Indiana.

TERM OF 1890 AND 1891.

Walter S. Beazley	Kentucky.
Geo. C. Keel,	Indiana.
B. D. Curtis,	Indiana.
Chas. G. Hoover,	Indiana.
Morris H. Raschig,	Indiana.
H. M. Zehrung,	Indiana.
J. M. Lewis,	Indiana.
Wm. Johnson,	Ohio.
C. E. Whitesides,	Indiana.

TERM OF 1890 and 1891.

C. P. Danks,	Indiana.
E. D. Foulds,	Canada.
O. F. Overstreet,	Indiana.
M. J. Keightly,	Indiana.
C. Feigel,	Indiana.
A. L. Austin,	Illinois.
C. F. Williams,	Indiana.
Frank Smith,	Indiana.
L. W. Roe,	Pennsylvania.
R. H. Kizer,	Ohio.
D. Otis Palmer,	Indiana.
O. V. Simmerman,	Indiana.
Jas. B. Jacques,	Minnesota.
M. M. Cook,	Indiana.
Hattie G. Scott,	Texas.
Geo. S. Rhea,	Pennsylvania.
E. T. Shields,	Indiana.
M. W. Johnston,	Indiana.
O. A. Keser,	Ohio.
Lewis J. Stiver,	Indiana.
A. O. McCutcheon,	Michigan.
C. P. Tinkham,	Indiana.
C. B. Hayford,	Ohio.
Perrie A. Row,	Indiana.
Lucinia B. McCollum,	Minnesota.
J. B. Brimmacombe,	Canada.
L. T. Lichtenwalter,	Indiana.
B. T. Perkins,	Indiana.
Mark L. Smith,	Illinois.
W. E. Armstrong,	Indiana.
H. C. Heaton,	Indiana.

ALUMNI ASSOCIATION.

At the close of the College session of 1889-90, the members of the graduating class of that year, assisted by the resident graduates, perfected an organization to be known as "The Indiana Dental College Alumni Association," having for its objects the promotion of a closer social fellowship among graduates and a revival of interest in our Alma Mater.

It is our desire to enroll all graduates on our roster, and any graduates not yet a member of the Association will confer a favor by sending his name and address to the Secretary. Over 50 per cent. of the Alumni are already members of the Association, and every endeavor will be made to make the roll complete at as early a date as possible.

The second regular annual meeting of the Association will be held during "Commencement Week," the first week in March, at which time we expect to spend an enjoyable social evening. Due notice of exact date of meeting will be given members of the Association.

M. M. COOK, D. D. S., *President*,

Kokomo.

H. M. ZEHRUNG, D. D. S., *Vice-President*,

Cambridge City.

G. E. HUNT, D. D. S., *Sec. and Treas.*,

143 N. Pennsylvania Street,

Indianapolis.

RECAPITULATION.

TOTAL EXPENSES FOR ONE COURSE.

College Fees* (omitting Diploma Fee).....	\$100.00
Board,†complete, twenty weeks, at \$5 per week.....	100.00
Washing, twenty weeks, at 50 cts. per week.....	10.00
Instruments, Tools and Books (if bought all new).....	80.00
Unaccounted necessities	10.00

‡Total—a liberal estimate for first term.....\$300.00

MEMORANDUM.

Positively no Senior students will be admitted after October 15.

No Junior students admitted after October 10, when the preliminary examination will be held.

All students are urged to be present on the opening day, in order to secure desirable rooms, board, etc.

All Juniors should take advantage of the Free Clinic, or Primary Course through September.

There are no extra fees in the College Course.

Students, on arrival in the city, should call on the Secretary without delay, leaving baggage checked at the depot to save expense and trouble.

Address all communications to

J. N. HURTY, M. D., Ph. D., Secretary,

102 North Pennsylvania Street,

INDIANAPOLIS, IND.

*Diploma Fee (\$25) to be deposited by the 1st of February, second term. The Diploma Fee will be returned to unsuccessful candidates for graduation.

†Board may be obtained for a much less amount, but of a less desirable quality.

‡The total expenses of a second term are reduced to \$250.

*Dental
Hall*

