

IUPUI Multicultural Center

CREATING A CULTURE OF SUCCESS

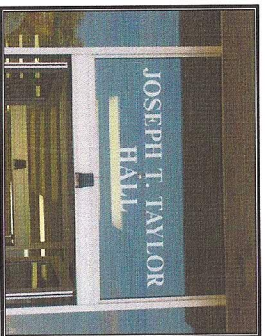
- ### MC FOCUS AREAS
- ▶ Cultural Programming, Awareness and Education
 - ▶ Recruitment and Retention
 - ▶ Mentoring
 - ▶ Leadership Development
 - ▶ Student Organization Development and Support
 - ▶ Resources and Referrals

MC Highlights

- ▶ Accepted for ACE at Home in the World Institute Fulbright Scholar visit to explore partnership with University of Botswana, Cameroon, Africa
- ▶ Hired 6 new staff members with diverse backgrounds (received over 75 applicants for student positions)
- ▶ Created liaison relationships with critical offices across campus
 - CCL
 - Greek Life
 - Student Success
- ▶ Multicultural Outreach
 - Young Gifted and Black
 - Office of Financial Aid Services
 - IU Foundation Office of Bursar
- ▶ Increased office traffic steadily each month by 151% since August 2009
- ▶ Launched monthly leadership institute with 5 MC affinity groups, in addition to 9 external groups including pre-professional student organizations
- ▶ Started Inclusive Excellence in Action Fund

RESOURCES = RETENTION

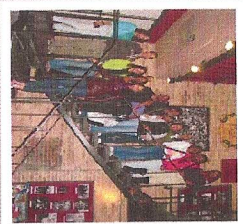
- | Student | Services |
|---------------------------------------------------------------------------------------------------------------------------------------------------------------------------------------------------------------------------------------------------------------------------------------------------------------------------------------------------------------------------------------------------------------|---------------------------------------------------------------------------------------------------------------------------------------------------------------------------------------------------------------------------------------------------------------------------------------------------------------------------------------------------------------------------------------------------|
| <ul style="list-style-type: none"> ▶ Residency Appeals ▶ Independent Verifications ▶ Appeals ▶ Professional Judgment ▶ Appeals ▶ Readmission Appeals & Satisfactory Academic Appeals ▶ Financial Assistance with Praxis Exam Payments ▶ Text Book Purchase Assistance ▶ Scholarship & Work-study Job Placement | <ul style="list-style-type: none"> ▶ Scholarship & Work-study Job Placement ▶ Child of Veteran Officer Benefits Process ▶ On/Off Campus Housing ▶ Financial Literacy (Students & Parents) ▶ Provided financial support to student success office to assist in retention efforts for students of color ▶ Created resource wall |



MC Staff



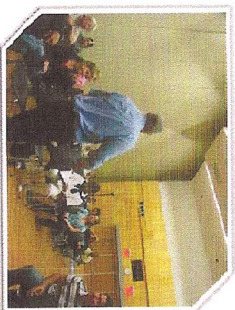
Get on the Bus: Chicago



MC Overnight Leadership Retreat



Hispanic Heritage Month
Felipe Luciano



Felipe Luciano



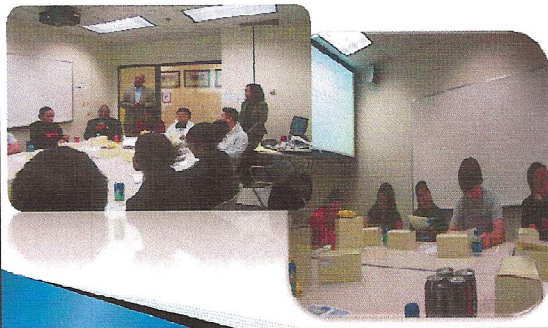
MC Open House



Native American Heritage Month:
Cherokee Recording Artist
Michael Jacobs



Monthly Leadership Institute



National Black Student Leadership
Development Conference, DC



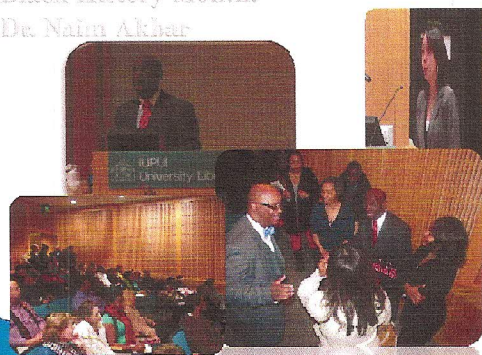
Kouyou Visual Artist Nicholas Simaka



Natural Woman Film with Producer
Cindy Hurst and Dr. Daryl Scriven



Black History Month:
Dr. Naim Akbar



United States Hispanic Leadership
Institute, Chicago



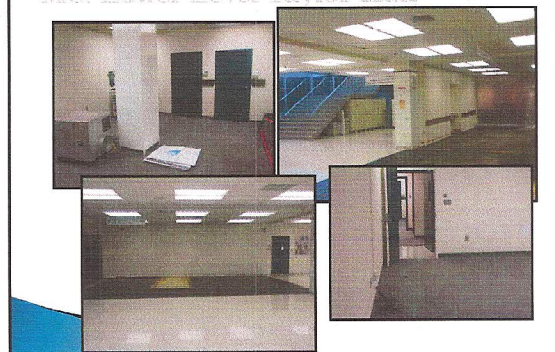
East Coast Asian American Student Union,
Philadelphia



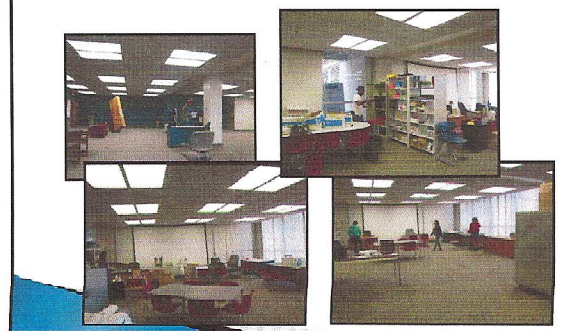
Women's History Month
Native American Storyteller, Davis Thomason



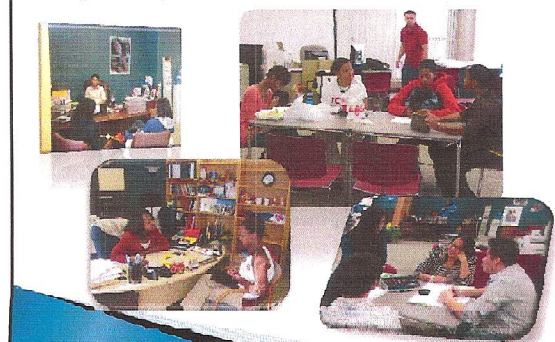
MC: Lower Level Taylor Hall

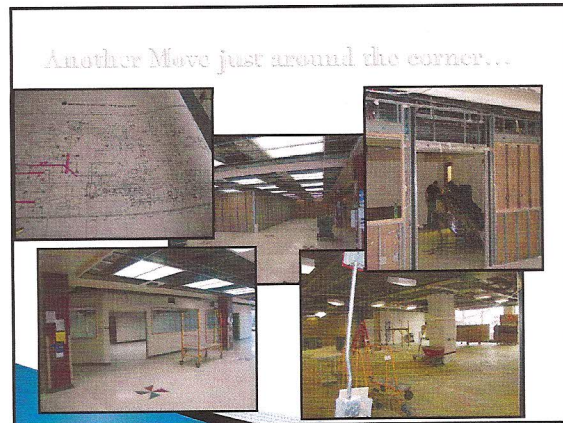


Transition to Taylor 115...



Adjusting to our new space...





NEW MC FEATURES

- › Scheduled to open August 2010
- › 18,000 square feet
- › Resource Center
- › Computer/Group Study Area
- › Meeting/Seminar Space
- › Conference Rooms
- › Student Organization Suite
- › Food Outlet
- › Nursing Mother's Room
- › Foot Washing Area
- › Unisex restrooms
- › Bust of Joseph Taylor
- › MC Administrative Suite
- › Adaptive Education Services Suite

How you can get involved

- › Refer Students
- › Support programs
- › Take advantage of programs designed to increase cultural competencies
- › Partner/Co-sponsor
- › Work with cultural organizations

Questions