



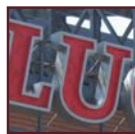
Table of Contents

Call to Convention

Welcome to the 81st National FFA Convention. With more than 55,000 FFA members and guests from across the country assembling in Indianapolis, this convention will prove to be memorable and exciting. Energetic sessions, engaging competitions, recognition of distinguished members and supporters, leadership workshops, an outstanding career show, National Days of Service and entertaining performances only begin to describe the experiences to come. Prepare to be moved, inspired and empowered to make a real impact as an FFA member. You will have countless opportunities to step up, equipping you to stand out in service, leadership, personal growth and beyond. Step Up, Stand Out is more than a theme. It is a call to action—one that convention will prepare you and your chapter to embody in the year to come. FFA members, advisors and guests—join us as we celebrate 81 years of FFA conventions.

Kari Biddle
Jack J. Kinne
Becky M. Sullivan
Morgan C. Parker
Tyler R. Tombray

New and Noteworthy
Page **2**



Sessions
Page **6**



Career Show
Page **8**



Photos
Page **9**



Alumni
Page **10**



Collegiate
Page **11**



Student and Teacher Workshops
Page **13**



Interactive Classrooms
Page **14**



National Days of Service
Page **16**



Tours
Page **18**



Event Schedule
Page **26**



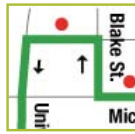
Entertainment
Page **33**



Parking
Page **39**



IndyGo Services
Page **40**



Shuttles
Page **43**



Housing
Page **45**



Planning and Registration
Page **46**



Forms
Page **49**





New and Noteworthy



As you anticipate the 81st National FFA Convention in Indianapolis, all the excitement of the event – including terrific tours, dining options, entertainment activities and a vibrant downtown environment – awaits you.

New Lucas Oil Stadium Replaces the RCA Dome

FFA is excited to use Lucas Oil Stadium, the new home of the Indianapolis Colts, for these events:

State Photos

Concerts

Food Court

Stars Over America Pageant and
American Degree Ceremony

Agriscience Fair

And more

New Stars Over America Pageant Moves to Saturday

In 2008, the Stars Over America Pageant will move to Saturday morning, Oct. 25, and be held in conjunction with the American Degree Ceremony at Lucas Oil Stadium.

This move has several advantages. The 16 Star finalists are chosen from this year's American FFA Degree recipients and will now be honored among their peers. Approximately 20,000 people will be in the stands for this recognition, so more people can celebrate when the Stars are named. FFA will also show video segments on the 16 Star finalists during Thursday evening's session so they may be seen by general session attendees.

Following the Stars presentation, American Degrees will be handed out beginning with Wyoming (A-Z) and ending with Alabama (A-Z). All recipients can request up to three free tickets to the Saturday ceremony during the Eighth General Session.





New and Noteworthy

American Degree Reception

The National FFA Organization will host an American Degree reception from 7 - 9 p.m. on Friday, Oct. 24, prior to Saturday's American Degree Ceremony. The reception, in the Sagamore Ballroom of the convention center, will feature former national FFA officer Fred McClure. All American Degree recipients receive one free admission. Additional reception tickets can be purchased through registration.

Downtown Environment

FFA members and activities will be in the middle of an exciting downtown city. Indianapolis is clean, safe, well-lit and easy to navigate. Please remember there will be a substantial amount of traffic surrounding convention locations, which include the Indiana Convention Center, Lucas Oil Stadium, Conseco Fieldhouse, Indiana State Fairgrounds and eight event hotels.

The downtown thoroughfare between the Indiana Convention Center and Conseco Fieldhouse will be partially cordoned off for pedestrian traffic. The street will be renamed "FFA Way" in honor of the convention and staffed with Indianapolis Metropolitan Police officers and volunteers to assist convention attendees back and forth between convention venues. There will still be automobile traffic on this street, so be attentive.

Because many people, including FFA members and advisors, are always looking for ways to help others, Indianapolis recently began a campaign to assist the city's homeless. Secure, metal drop-boxes will be located throughout downtown, each displaying a message urging residents and visitors to "Chip in at The Box." If you wish to donate your change, please put it in "The Box" and do not give any donations to panhandlers.

New Construction Update

Due to the expansion of the Indiana Convention Center and the building of a new downtown hotel complex, there will be several lane closures. For complete construction updates, visit convention.ffa.org.

Travel Safety

Make sure students are familiar with general safety practices listed on page 45.

If you're traveling to the national FFA convention in a 15-passenger van, the National Highway Traffic Safety Administration's safety advisory recommends these precautions:

- **Tires are checked at least once a week, using manufacturer's recommended pressure levels**
- **Occupants wear safety belts at all times**
- **Drivers are trained and experienced**
- **No loads on the roof of the van**

For more safety tips on 15-passenger vans, visit safercar.gov, click on 15-passenger Van Safety.

Indiana State Fairgrounds

Ten Career Development Events (CDEs) will take place at the Indiana State Fairgrounds, 38 blocks north of downtown Indianapolis. The fairgrounds is self-contained, with fencing surrounding the facility. Ample food and beverages will be for sale, and breaks have been built into the CDE schedules for meals and snacks. We suggest you take advantage of these food options, as there are limited restaurants in the area. The fairgrounds are surrounded by residential neighborhoods and commercial areas with busy streets, so we suggest your group stay inside the grounds for all activities. A free shuttle between the convention center and the fairgrounds will be available for convention and CDE participants. For more fairgrounds information, consult your CDE team orientation packet and the shuttle information on page 43.

Tax Exemption

FFA chapters are not eligible for tax exemption in Indiana. All housing rates quoted and provided to chapters using the Indianapolis housing block include all appropriate taxes.

Convention Volunteers

The National FFA Convention Courtesy Corps is a great way for members to volunteer their time and go behind-the-scenes at the convention. Members will assist convention staff in fulfilling responsibilities in many areas including CDEs, the arena's main stage, the awards office, FFA newsroom and more.

Registration for Courtesy Corps is only online this year. To register, visit <https://register.ffa.org/event/6005>.





New and Noteworthy

Badges and Curfew

For recognition, safety and security, please instruct students and attendees to wear convention badges at all times – not just when attending sessions or the career show. These badges will assist Indianapolis volunteers identify convention attendees should they need directions to convention events. Indianapolis has an 11 p.m. curfew for minors under 18, and Circle Centre Mall has a 9 p.m. curfew on weeknights. FFA members attending the convention will be exempt from this curfew, but only if they can be easily identified and are behaving appropriately. Please note: This does not allow students free run of the city at night.

Registration

The National FFA Board of Directors set the 2008 National FFA Convention registration fee at \$50. A \$10 registration discount will be applied for chapters using the housing block and who pre-register.

During the past five years, FFA has seen a steady increase in the convention's operational costs as the convention has continued to evolve into a larger, more dynamic event. Sponsorship and other revenue have helped offset convention costs – up to a point. Convention registration fees still cover just 22 percent of the cost of convention. FFA members are provided a tremendous experience at the most affordable price possible.

Back by Popular Demand The Laser Show!

Get ready to be dazzled during each convention session in Conesco Fieldhouse, sponsored by Monsanto and DEKALB WingWear as a special project of the National FFA Foundation.



Exhibits at Lucas Oil Stadium

FutureLab: The Innovation Expo is a unique traveling expo on science and technology that will be featured in Lucas Oil Stadium. The FutureLab mission revolves around transforming how science is learned, celebrating innovation and innovators and enabling students to learn about tomorrow's technology so they can become architects to their

future. Through interactive activities focused on Alternative Fuels, Life Sciences, Nanotechnology, Robo-Technology and Deep Space, students have the opportunity to see, tour, hear and feel cutting-edge science and technology advancements! The Chevy Sound Stage will once again be providing free entertainment. Be sure to make time to visit and see these and other fun and interactive exhibits that will be represented at Lucas Oil Stadium on Wednesday, Thursday and Friday, Oct. 22-24, of the national convention.

FFA Grand March is Back

On Wednesday, Oct. 22 at 2:45 p.m., join the National FFA Band and Chorus and state flags in a march down FFA Way to Conesco Fieldhouse for the opening session. The march will begin outside the east doors of the Indiana Convention Center.

Shipping Home Made Easy

Thanks to UPS, your chapter will be able to send a large package home FREE!

Upon arrival to convention, stop by the UPS booth in the Maryland Street Lobby and pick up your pre-addressed pre-paid shipping package! Enjoy gathering your great FFA items; fill the package, seal it and drop it in one of the UPS drop boxes in the convention center! It may beat you home!



Indy Attractions

For a complete list of attractions, visit the convention website on ffa.org.

FASTLINE®

Check out convention.ffa.org for coverage of the
81st National FFA Convention
sponsored by Fastline Publications
as a special project of
the National FFA Foundation.





Convention Events





Sessions

Opening Session

"Step Up"

Wednesday, Oct. 22

4 - 5:45 p.m., 1A

7:15 - 9 p.m., 1B

Conseco Fieldhouse

Thursday, Oct. 23

8 - 10 a.m., 1C

Conseco Fieldhouse

Keynote speaker Dana Hee; National Officer Reflections, National Advisor's Challenge, FFA Alumni Greetings (1 C Only), Band and Chorus Grand Entry



Keynote Speaker:
Dana Hee

As an Olympic Gold Medalist, award-winning Hollywood stuntwoman, life survivalist and motivational speaker, Dana Hee is a living example of how to overcome obstacles and turn dreams into reality. At the age of 25, she took one step with courage toward her long-standing dream of winning an Olympic Gold Medal. Accomplishing her goal, not only did she change her thinking from "I can't" to "I can," she finally understood the little secret to the pursuit of excellence.

Second Session

"Step Up and Imagine"

Thursday, Oct. 23

2 - 4:30 p.m.

Conseco Fieldhouse



Retiring Address:
Becky Sullivan

State Association Membership Awards, Models of Innovation Awards, National Chapter Awards

Third Session

"Step Up With Courage"

Thursday, Oct. 23

7:30 - 10 p.m.

Conseco Fieldhouse



Retiring Address:
Kari Boettcher

Keynote speaker Tom Zupancic, Sponsor Recognition, Million Hour Challenge



Keynote Speaker:
Tom Zupancic

Tom Zupancic joined the Indianapolis Colts when they moved to the city in 1984. He served as the team's strength and conditioning coach until 1999. Today he is the Senior Vice President of Sales and Marketing. Tom ranks 14th in the world among all-time super heavyweights with a 600-pound bench press. He was a finalist for the 1980 and 1984 USA Greco Roman Olympic wrestling teams.

Fourth Session

"Step Up Intentionally"

Friday, Oct. 24

8 - 10:30 a.m.

Conseco Fieldhouse



Retiring Address:
Morgan Parker

Keynote speaker Mark Scharenbroich, DSC and VIP Citations, Honorary Degree Ceremony



Keynote Speaker:
Mark Scharenbroich

Mark Scharenbroich earned a degree in mass communications at St. Cloud State University. During the 1970s, he performed in the comedy troupe Mom's Apple Pie. When the group disbanded, Mark combined his comedy training with motivational speaking. In 1981 Mark was featured in a film called "The Greatest Days of Your Life." It earned the Golden Apple and Silver Screen film awards. Mark and his wife, Susan, founded Scharenbroich & Associates, Inc. Mark is writing his first book entitled *Nice Bike: Making Connections that Move People*.





Sessions



Fifth Session

"Step Up to Empower"

Friday, Oct. 24
Noon - 1:30 p.m.
Conseco Fieldhouse



Retiring Address:
Tyler Tenbarge

Officer Advisor and School Recognition, H.O. Sargent Awards, NAAE Greetings, National Officer Candidate Introductions, Agri-Entrepreneurship Awards

Sixth Session

"Step Up to the Experience"

Friday, Oct. 24
3 - 4:30 p.m.
Conseco Fieldhouse
Proficiency Awards

Seventh Session

"Step Up Boldly"

Friday, Oct. 24
7 - 9 p.m.
Conseco Fieldhouse




Retiring Address:
Brady Revels

Keynote speaker Michael Peterson; Creed, Extemporaneous and Prepared Public Speaking CDE Awards; Agriscience Student and Teacher Recognition; Agriscience Fair Finalists



Keynote Speaker:
Michael Peterson

Sponsored by 

Grammy and CMA award nominee Michael Peterson has spent 12 years inspiring high school students how to live with uncertainty and not be paralyzed by fear. Peterson also has been a contributing author to the "Chicken Soup for the Soul" series. In February, 2008,

Peterson began the U.S. Army-sponsored "My Real Life - Strong for America" tour to help close the gap between public education, civilians and the military.

Eighth Session

"Step Up and Pursue"

Saturday, Oct. 25
7:45 - 11:30 a.m.
Lucas Oil Stadium
Stars Over America Pageant, American Degree Ceremony

Session Nine

"Stand Out"

Saturday, Oct. 25
1:30 - 5 p.m.
Conseco Fieldhouse




Retiring Address:
Zach Kinne

Keynote speaker Fred McClure, National Officer Parent Recognition, Career Development Event Winners, Delegate Reports, Past National Officer Recognition, Election and Installation of National FFA Officers, Convention-in-Review Show



Keynote Speaker:
Fred McClure

Sponsored by 

Frederick D. McClure served as National FFA Secretary in 1973-74 and as Texas FFA President in 1972-73. Managing partner of the Washington, D.C., office of Sonnenschein Nath and Rosenthal, he has served as assistant for legislative affairs to Pres. George H.W. Bush and as special assistant for legislative affairs to Pres. Ronald Reagan. In 1994, governor-elect George W. Bush appointed McClure to the Texas Inaugural Committee. In 2001, he was a member of the Bush-Cheney transition committee. Time magazine has named McClure one of America's 50 most promising leaders 40 and under.





Career Show



FFA National Agricultural Career Show®

Exhibit Halls C-G at the Indiana Convention Center

Lucas Oil Stadium will have the Chevy sound stage as well as other interactive displays.

Grand Opening

Wednesday, Oct. 22, 12:30 p.m.

Main Hall, First Floor, Indiana Convention Center

Hours of Operation
Wednesday, Oct. 22,
12:30 - 6 p.m.

Thursday, Oct. 23,
8 a.m. - 5 p.m. **New Hours!**

Friday, Oct. 24,
8 a.m. - 4 p.m. **New Hours!**

More than 1,300 booths representing colleges, agriculture-related companies, fundraising companies, U.S. Armed Services and auto and truck manufacturers pack exhibit halls C-G and the surrounding hallways on the first and second floor of the Indiana Con-

vention Center for the FFA National Agricultural Career Show. The Hall of States is located on the second floor. Exhibitors offer attendees a balance between information, education and hands-on training such as welding and computer-related technology. Chapter advisors are able to gather new material for use in the classroom after the convention. Students will discover numerous agricultural careers and explore opportunities in post-secondary job training and education.

Career Show in the Classroom

The FFA

National Agricultural Career Show is full of information, and consequently, full of possibilities for classroom and real world applications.

- Ask students to find three exhibits related to a career field that interests them, gather information, interview the exhibitors and then present what they've learned to their classmates when they return to school.
- Urge students to collect business cards and handouts from a variety of career fields. In the classroom, they can make displays or posters for each career field, which can then be displayed at their school.
- Provide a service to the upperclassmen at your school by asking students to gather information on colleges and present what they learned to the senior class.
- Require each student to visit 15 company booths and make a list of three occupations related to each company.





Photos

State Photo Schedule

The state photo booth will be located in Lucas Oil Stadium.
Talk with your state FFA association for more information
about your state photo.

Thursday, Oct. 23

Friday, Oct. 24

9 a.m.	Hawaii	9 a.m.	Florida
9:15 a.m.	Vermont	9:15 a.m.	New York
9:30 a.m.	Maine	9:30 a.m.	Kentucky
9:45 a.m.	Connecticut	9:45 a.m.	Tennessee
10 a.m.	North Dakota	10 a.m.	Idaho
10:15 a.m.	Puerto Rico	10:15 a.m.	Michigan
10:30 a.m.	Alaska	10:30 a.m.	Illinois
10:45 a.m.	Virginia	10:45 a.m.	South Carolina
11:15 a.m.	Oklahoma	11:15 a.m.	New Mexico
11:30 a.m.	Washington	11:30 a.m.	Georgia
11:45 a.m.	South Dakota	11:45 a.m.	West Virginia
12 p.m.	Iowa	12 p.m.	Louisiana
12:15 p.m.	Alabama	12:15 p.m.	New Jersey
12:30 p.m.	Courtesy Corps	12:30 p.m.	Nevada
12:45 p.m.	Delegates	12:45 p.m.	Montana
2 p.m.	Pennsylvania	2 p.m.	Massachusetts
2:15 p.m.	Colorado	2:15 p.m.	Minnesota
2:30 p.m.	Virgin Islands	2:30 p.m.	Utah
2:45 p.m.	Rhode Island	2:45 p.m.	Arkansas
3:15 p.m.	Mississippi	3:15 p.m.	Arizona
3:30 p.m.	North Carolina	3:30 p.m.	Oregon
3:45 p.m.	Missouri	3:45 p.m.	New Hampshire
4 p.m.	Indiana	4 p.m.	Nebraska
4:15 p.m.	Wyoming	4:15 p.m.	Ohio
4:30 p.m.	California	4:30 p.m.	Kansas
4:45 p.m.	Maryland	4:45 p.m.	Texas
5 p.m.	Delaware		
5:15 p.m.	Wisconsin		

For questions concerning state photos, contact Amber Striegel, 317-802-4245 or astriegel@ffa.org.





National FFA Alumni

2008 National FFA Alumni Convention

Indiana Convention Center
Rooms 205-207

The National FFA Alumni Convention is where alumni members gather to share ideas and inspirations, conduct association business and to award one another for outstanding achievements in service to FFA, agriculture and their communities.

Thursday, Oct. 23
9 - 10 a.m.

What's the Message Workshop

This workshop covers: what's important in a message, how to craft and deliver a strong message and classic elevator speech and how it comes in handy. It also includes the basics of dealing with the media and public relations including media advisories, press releases, op-eds, and interviewing.

11 a.m. - Noon
Advocacy Workshop

Advocacy - The importance of strong messages, what it takes for politicians to listen, exploring resources at hand and addressing the role advocates play in agricultural education and their need on the local, state and national level.

1 - 2 p.m.
Alumni Boot Camp Workshop

We Want YOU! Whether you already have an Alumni or want to get one started....join us for FFA Alumni

Basic Training! Understand how the national, state and local affiliates work together, learn how to start an FFA Alumni or jump start your existing FFA Alumni. Get the basics and more in a boot camp that will get you motivated and excited about the FFA Alumni!

4 - 6 p.m.
Awards Session

Friday, Oct. 24

8 - 9:30 a.m.
Delegate Check-In
9:30 a.m. - Noon
Business Session



The National FFA Alumni Association is the backbone of FFA, working to support FFA members in their quests for premier leadership, personal growth and career success and to ensure that all people in their communities can do the same.

BE A SCHOLARSHIP SUPERHERO TO AN FFA MEMBER!

2008 National FFA Alumni Benefit Auctions - Joining forces to raise funds for student scholarships!

Wednesday, October 22

1 - 6 p.m.
Silent Auction Open for Bidding
Live Auction Items on Display
ICC, 500 Ballroom

Thursday, October 23

9 a.m. - 6 p.m.
Silent Auction Open for Bidding
Live Auction Items on Display
ICC, 500 Ballroom

Friday, October 24

9 a.m. - 2 p.m.
Silent Auction Open for Bidding
Live Auction Items on Display
ICC, 500 Ballroom

4 - 10 p.m.
Silent Auction Payment/Pickup
ICC, Room 113

5 - 6 p.m.
Live Auction Social
ICC, 500 Ballroom

Friday, October 24

6 p.m.
Live Auction Begins
ICC, 500 Ballroom

Saturday, October 25

8 - 10 a.m.
Auction Payment/Pickup
ICC, Room 113

10 a.m.
Mini-Auction for Unclaimed Items

At the auctions you can lend your support to FFA members and bid on outstanding items such as:

A Ford F-150 SuperCrew XLT, New Holland tractor/baler lease, 46" Cub Cadet lawn mower, American Sportworks Fun Kart, Carhartt jackets, Delta toolboxes, Lincoln welders, Oster, Schleich and Tractor Supply Company vendor products, restaurant and attraction gift certificates, FFA collectibles, state baskets, celebrity items and much, much more!

Know anyone not coming to convention?

Let them know they can still participate in our:

- Live Auction broadcast via the internet, Friday, Oct. 24 at 6 pm (EDT)
- Online timed auction open Oct. 15 -29, 2008

Visit www.unitedcountry.com/ffauction to view these auction catalogs, register and bid from home!!





Collegiate



Collegiate FFA enhances the collegiate experience through service and engagement to create premier leaders, enable personal growth and ensure career success. What better way to reach these goals than with a trip to the national FFA convention. Use this schedule to plan your days and evenings with your fellow collegiate FFA members and friends.

Wednesday, Oct. 22 4 – 5 p.m.

Beginner and Advanced
Collegiate LifeKnowledge
Training
Hilton Hotel

Thursday, Oct. 23 10 – 11 a.m.

Professional/Personal
Development Workshop
Hilton Hotel

2 – 3 p.m.
Personal Development
Workshop
Hilton Hotel

3 – 4 p.m.
Personal Development
Workshop
Hilton Hotel

8 p.m. – Midnight
Collegiate House Party
NCAA Hall of Champions

Friday, Oct 24

10 a.m. – Noon

Career Development
Session
ICC, Rooms 107-108

Noon – 1 p.m.
Networking Lunch
ICC, Rooms 105-106

1 – 3 p.m.
Career Development
Session
ICC, Rooms 107-108

7 – 11 p.m.

Collegiate Social Event
Rock Bottom

Saturday, Oct. 25

9 a.m. – 1 p.m.
Collegiate Career Expo
ICC, Rooms 101-106





Convention Activities





Student and Teacher Workshops

Student Workshops

Student workshops provide opportunities for experiential development in premier leadership, personal growth, and career success. Workshops are offered Wednesday through Saturday at the following times:

Wednesday - 3:30 p.m.

Thursday - 8:30 a.m. - 5 p.m.
(starting every half hour)

Friday - 8:30 a.m. - 5 p.m.
(starting every half hour)

Saturday - 9 a.m. and 10 a.m.

All workshops are held in the Indiana Convention Center. For specific times, locations and workshop description please visit www.ffa.org.

Workshops are sponsored by: GMAC, US Army, Vector Marketing, AVMA, Organic Valley/Cropp Cooperative



Teacher Workshops

Are you looking for ways to incorporate innovative methods, new technology and current issues into your classrooms? If so, attend



the interactive teacher workshops to make your classroom come to life. Discover innovative ideas and activities, receive free curriculum and learn methods

to increase student involvement. Workshops are conducted at hour and a half intervals during each day of the career show. Profes-

sional Learning Units will be offered for each session attended. For updates check the educator workroom at www.ffa.org/ageducators.





Interactive Classrooms for Teachers

School Officials' & Educators' Workroom



The School Officials' and Educators' Workroom is built around the precepts of program planning, instruction, experiential learning, leadership development, marketing, partnerships and professional growth. Here teachers can talk about agricultural education with their school official, view the latest in curriculum, instruction and experiential learning with the interactive computer displays sponsored by the Team Ag Ed Learning Center; the LifeKnowledge team, the Living To Serve program and the National Association for Agricultural Educators (NAAE), also hear how agricultural education and FFA made a difference in the lives of collegiate FFA members. Witness, firsthand, the integral role FFA plays in a comprehensive agricultural education program.

School Officials' and Educators' Workroom ICC, Career Show

Hours of Operation:

Wednesday, Oct. 22, 12:30 - 6 p.m.

Thursday, Oct. 23, 8 a.m. - 5 p.m.

Friday, Oct. 24, 8 a.m. - 4 p.m.

DuPont Agriscience Institute

Sponsored by DuPont Center for Collaborative Research and Education as a special project of the National FFA Foundation.

New Workshops, **New Focus, New Location!**

This is the sixth year for the Agriscience Institute, but six of the eight workshops have never been offered before. This year, the workshops' focus will be on delivery through Inquiry-Based Instruction. You'll learn new skills, teaching methods and literacy ideas that will work in your classroom. Every participant will receive a workshop sampler kit that includes copies of the lessons presented as well as some equipment being used.

DNA Extraction Part 2 **(Plant Systems Career Pathway)**

Join us for a hands-on method of DNA extraction — in a classroom just like yours! This workshop uses safe materials to extract DNA from crushed strawberries, allowing

students to visualize DNA macroscopically and understand some of its properties. The activity also uses inquiry modeling to look at the component parts of DNA and the DNA double-helix at a microscopic level.

Investigating Battery Power **(Ag Mechanics Career Pathway)**

How do batteries work? Do some materials work better than others to generate power in a battery? Explore these questions by examining how different metal combinations generate varying amounts of power to drive a simple battery. This activity has a variety of applications as well as being appropriate for various levels of content.

Environmental Impacts: Is Copper Mining Related to Agriculture? **(Environmental Systems Career Pathway)**

Copper and other raw materials contribute to our technological lifestyle, but the by-products of extracting copper from ore are potential toxic wastes. Explore the properties of copper and copper ore and conduct two reactions used to extract and recover copper from the ore. This process introduces single and double replacement reactions.

Genetic Modification or Selective Breeding? **(Animal Systems Career Pathway)**

Are there benefits to using GMOs versus selective breeding? What risks and trade-offs must be considered in using GMOs? Participants will consider the trade-offs in using GMOs. The second part of this activity uses cattle breeds selected for desirable characteristics. Participants will analyze the results of crosses to come to a final conclusion as to whether selective breeding or genetic modification is the best approach to gain desirable traits.

Using Pre-assessment and Literacy with Genetics – No Kidding It Can Be Done!

Wednesday only

Pre-assessment is essential to utilize our time in the classroom. This activity uses a simple scenario and modeling to pre-assess student knowledge of terms and concepts in a genetics unit. Following the pre-assessment, participants will be introduced to a short content reading that applies to their model and literacy strategies.





Interactive Classrooms for Teachers



New Inquiry-Based Instruction, A New Look at an Old Way of Teaching

Wednesday only

Teaching student-centered lessons instead of teacher-centered lessons will take you out of your comfort zone. This workshop will examine the principles of inquiry-based learning and will help you change the way you teach to make a real impact on student learning.

"There's Trouble In Them Thar' Wells!" (Natural Resources Career Pathway)

Is water from the aquifer safe to drink? Half of our water – and up to 95% of water in rural communities – comes from groundwater, which is increasingly at risk for pollution. The community of Fruitvale has a contamination problem. You are provided tools to determine the contamination

source, severity, extent and rate of travel. Discover a model of the spread of contamination in an aquifer and compare the formation of groundwater contamination plumes. This hands-on activity will help determine the similarities and differences between point and non-point source contamination.

Getting Corny With Genetics (Plant Systems Career Pathway)

Understanding genetics has played an important role in addressing global food shortages. Investigate the genetics of corn plants by simulating crosses between the offspring of plants with one trait and plants with two traits. Examine and compare pictures of offspring produced by different sets of parents and extend your investigations on the inheritance of dominant and recessive traits and the Law of Independent Assortment.



81st National FFA Convention Student Leadership Workshops

Your convention experience isn't complete until you've attended at least one leadership and personal growth workshop! These workshops have been developed to help you in your quest for premier leadership, personal growth and career success. Find the workshop that best fits your development needs and interests!

Student workshops, which will be located in the Indiana Convention Center, are sponsored by: *GMAC Financial Services, the American Veterinary Medical Association, Fifth-Third Bank, Vector/Cutco, The Original Muck Boot Company, Organic Valley Coop., U.S. Army, American Society of Agronomy, and the American Association of Equine Practitioners Foundation.*

Chapter Super Hero

Presented by: Jason Davis, MFE/ALD and WLC staff

Ever wanted to be a Super Hero? This is the workshop for you. Here we will explore how we can become a powerful and influential member in our chapters. It takes an individual who is willing to raise the bar and take others with them to achieve this status. If you think you have what it takes, check out Chapter Super Hero.

Character, Action, Professional Growth, Communication

Thursday, Oct. 23, 11 a.m., Room 208-209

Thursday, Oct. 23, 4:30 p.m., Wabash 2

Friday, Oct. 24, 8:30 a.m., Wabash 2

The Word on the Street

Presented by: Beatriz Campuzano, WLC staff, and Natalie Ryan, National Agricultural Ambassador

Interested in agriculture? What if everyone in our country knew about agriculture and how it affected them? Come on by to share some experiences with friends, show your face on The Price is Right game show and leave with the word on the street about the agriculture industry!

Awareness, Vision, Professional Growth, Skills in Agriculture

Wednesday, Oct. 22, 3:30 p.m., Wabash 3

Friday, Oct. 24, 11 a.m., Room 208-209

Scrub In! Healthy Relationships

Presented by: Miranda Leppin, MFE/ALD and WLC staff, and Kevin Faw, WLC staff

Hang out with us in the OR as we dissect the key to maintaining positive relationships with others through exploring character and effective communication skills. Nurse... scalpel please!

Relationships, Character, Communication

Thursday, Oct. 23, 12:30 p.m., Wabash 1
Thursday, Oct. 23, 2:30 p.m., Wabash 1
Friday, Oct. 24, 9 a.m., Room 208-209
Saturday, Oct. 25, 9 a.m., Wabash 1

Blasting Into the Future

Presented by: Jessica Berger and Tucker Louthan, MFE/ALD and WLC staff

Have you ever wondered what your future holds? Well if you don't stop by, you'll never know. Get a jump start on your future and find out what awaits; come take the wheel of a time machine and blast into the future!

Decision Making, Action, Vision

Wednesday, Oct. 22, 3:30 p.m., Wabash 1
Thursday, Oct. 23, 8:30 a.m., Wabash 1
Friday, Oct. 24, 8:30 a.m., Wabash 2
Saturday, Oct. 25, 9 a.m., Wabash 2

iREAL – The Essence of Being You!

Presented by: Bryan Schullian, WLC staff, and Bruce Cooley, past state officer

Who are you...the real you? Toss aside each front we make in life and hold on for the ride as we prepare to discover who we really are. No cheap knock offs here, only the real deal! Who wants second best when they can have the real McCoy? Be real, be genuine, be you!

Character, Awareness, Social Growth, Mental Growth, Spiritual Growth

Wednesday, Oct. 22, 3:30 p.m., Room 121-122
Thursday, Oct. 23, 9 a.m., Room 208-209
Friday, Oct. 24, 9 a.m., Room 121-122
Saturday, Oct. 25, 9 a.m., Wabash 3

Hang It Up...Open the Door

Presented by: Tim Martini and Zac Willmarth, MFE and WLC staff

So what comes next after high school? Ever wonder what happens after you retire your FFA jacket? Imagine going to a workshop where we never hear the words teamwork, trust, communication and leadership. Seniors, we have what you need--a fun and action-packed workshop that connects key concepts learned in FFA to real-life applications after high school.

Vision, Awareness, Decision Making

Wednesday Oct. 22, 3:30 p.m., Wabash 2

Thursday, Oct. 23, 8:30 a.m., Wabash 2
Thursday, Oct. 23, 10:30 a.m., Wabash 2
Saturday, Oct. 25, 9 a.m., Room 121 – 122

It's a Grand of a Slam!

Presented by: Jimmy Pierce, MFE/ALD and WLC staff, and Cole Rojewski, past state officer

What do you get when you combine Fenway Park, Wrigley Field and Yankee Stadium? No one could ever deny the answer from being “Legendary.” What if the “rich” heritage of these ballparks brought great passion and tradition to your chapter? We’ll discover ways of bringing America’s past time and legacy to our home communities and FFA chapters. The bases are loaded, two outs, bottom of the ninth and, you’ve been called to the plate. Grab a hold of that timber and let’s hit a Grand Slam!

Action, Vision, Mental Growth, Communication

Thursday, Oct. 23, 12:30 p.m., Wabash 2
Thursday, Oct. 23, 2:30 p.m., Wabash 2
Friday, Oct. 24, 10:30 p.m., Wabash 2
Friday, Oct. 24, 12:30 p.m., Wabash 2

Viral Revolution (Facebook, Anyone?)

Presented by: Mark Jewell, BLAST-Off staff

The time is ripe for revolutionizing the way we interact with our friends, sponsors and future employers through the realm of social media! Join us for this fun filled workshop as we learn to market ourselves effectively through social networking applications.

Action, Relationships, Social Growth, Communication

Thursday, Oct. 23, 9 a.m., Room 121-122
Friday, Oct. 24, 10:30 a.m., Wabash 1
Friday, Oct. 24, 12:30 p.m., Wabash 1

The Recipe for Success

Presented by: Angela Mayfield, former National FFA Officer and agricultural instructor

In a high-energy setting, students engage in experiential learning as they identify the ingredients of a leader: personal strengths, communication, and a drive to push the max! Get ready to put your chef’s hat on; it might get messy as we develop the recipe for success!

Action, Social, Professional & Mental Growth

Thursday, Oct. 23, 9 a.m., Room 123-124
Friday, Oct. 24, 2:30 p.m., Wabash 2
Friday, Oct. 24, 4 p.m., Wabash 2

Food Fight

Presented by: Andrew McCrea, former National FFA Officer, author and radio broadcaster

Now is a great time to be involved in agriculture! People around the world are looking for ways to feed, clothe and fuel the world. However, there are challenges to accomplishing this goal. Join us for a fun and fast-paced workshop to learn the facts behind key agricultural issues and see how you can effectively share your agricultural message in your community.

Awareness, Decision Making, Skills in Agriculture

Friday, Oct. 24, 8:30 a.m., Wabash 1

Friday, Oct. 24, 2:30 p.m., Wabash 1

Friday, Oct. 24, 4:00 p.m., Wabash 1

Followership Skills – All Leaders Need Them

Presented by: Rick Henningfeld, past BLAST-Off staff; Ron Henningfeld, past WLC and MFE staff; and Sheri Nelson

Are you a leader or a follower? Even as leaders, we spend most of our time following. No lie! Most of us exhibit leadership skills, but are we familiar with “followership” skills? Probably not. Follow us in this workshop as we dive into what it takes to be an effective follower...it may help you become a better leader.

Social Growth, Professional Growth, Action, Relationships

Thursday, Oct. 23, 11 a.m., Room 123-124

Thursday, Oct. 23, 4:30 p.m., Wabash 1

Friday, Oct. 24, 1 p.m., Room 123-124

Friday, Oct. 24, 3 p.m., Room 123-124

Becoming an Authentic Leader

Presented by: Kerry Priest and Corey Epler, BLAST-Off staff

Authenticity in leadership is a proven, admired and much sought-after characteristic. Authentic leadership is sincere, honest, reflects an attitude of service and creates lasting influence. In this workshop you'll learn how to develop the essential attitudes and actions of an authentic leader.

Action, Awareness, Relationships, Social Growth

Thursday, Oct. 23, 1 p.m., Room 123-124

Thursday, Oct. 23, 3 p.m., Room 123-124

Friday, Oct. 24, 9 a.m., Room 123-124

Friday, Oct. 24, 11 a.m., Room 123-124

Learning to Lead

Presented by: Ted Wiese, Wiese Training & Development, LCC

Known as one of America's best youth leadership presenters, Ted Wiese will inspire, motivate and educate students on ways they can enhance their leadership skills. Interactive, humorous and thought provoking, this workshop will focus on overcoming the fear of failure, how to turn mistakes into stepping stones for success and the power of being part of the solution instead of part of the problem. This workshop will leave students with information and skills to take back to school, ideas to put into action, and something good to talk about in the days and months ahead.

Flexibility/Adaptability, Mental Growth, Action

Friday, Oct. 24, 1 p.m., Room 208-209

Friday, Oct. 24, 3 p.m., Room 208-209

Be True to What You Believe

Presented by: Kiwanis International Key Leaders Program

This workshop is an interactive exploration of personal values and how they affect a student's daily life. Explore the challenges of family, homework, best friends, school, work and all you face each day. Reflect on your present values and how they dictate those daily choices. Experience what students across North America and beyond have gained from the Kiwanis Key Leader Program.

Vision, Character, Spiritual Growth

Thursday, Oct. 23, 10:30 a.m., Wabash 1

Go Blue!

Presented by: Stuart Joy and Jamie Cecil, National FFA Alumni Council and former National FFA Officers

It's not just a trend, it's a way of thinking—a personal commitment. Have you considered how you might continue to live out the FFA mission after stepping out of the blue jacket? The sustainability of American agriculture is hinged on continued education of our society's youth. Securing the promise of FFA and agricultural education requires a community of people who share a passion for agriculture and a willingness to serve. The National FFA Alumni Association strives to do just that by building relationships, advocating and serving at the heart of our organization, the local FFA chapter. Come and discover how you can GO BLUE for a lifetime!

Thursday, Oct. 23, 1 p.m., Room 208-209

Veterinary Medical Careers: Blending Science with High Tech Medicine

Presented by American Veterinary Medical Association

Did you know that today's veterinarians are engaged in every aspect of human, animal and environmental health? Can you envision yourself working in a profession that protects our planet through new discoveries in food safety, public health, space exploration, species preservation and research on human and animal diseases? If so, then come and learn about the exciting and challenging career opportunities available in veterinary medicine today.

Technical/Function Skills in Agriculture

Thursday, Oct. 23, 8:30 a.m., Wabash 3

Thursday, Oct. 23, 2:30 p.m., Wabash 3

Making College a Reality--GMAC

Presented by GMAC

Note: This is a two-part workshop.

Part 1: Attention FFA Members! That first big financial decision is just around the corner, or maybe you have already made the big leap... the leap of purchasing your first vehicle. The question is, have you thought about how you're going to manage your budget to pay for this vehicle? More importantly, have you ever considered how your credit might impact your SAE, college loans and signing up for your first credit card? Join representatives from GMAC Financial Services as they explain to you some practical pointers in what you need to know about credit, budgeting and the options that are available to you.

Part 2: Sure, you have thought about college. Maybe the decision is three years away. Maybe it's just around the corner. Reality check! Have you thought about how you are going to pay for college? Join representative from GMAC Bank as they teach the "ins and outs" of "alternative" or private direct-to-consumer education loans.

Professional Growth, Decision Making, Awareness

Thursday, Oct. 23, 10:30 a.m., Wabash 3

Thursday, Oct. 23, 12:30 p.m., Wabash 3

Learn, Lead, Succeed with the U.S. Army

Presented by: U.S. Army

Being a member of FFA, just like being a soldier, helps young people develop the mental, physical and emotional strength they need to succeed in life. This workshop will consist of real-world lessons and positive goal-setting, trust-building and leadership exercises focused on the Army core values: loyalty, duty, respect, selfless service, honor, integrity and personal courage. HOOAH!

Character, Action, Awareness, Emotional Growth, Vision

Thursday, Oct. 23, 1 p.m., Room 121-122

Thursday, Oct. 23, 3 p.m., Room 121-122

Veterinary Technician – A Career for You?

Presented by: National Associations of Veterinary Technicians in America

Veterinary technicians promote and maintain good health in animals, care for diseased and injured animals and assist in the control of diseases transmissible from animals to humans. Working with veterinarians, bio-medical researchers and other scientists, veterinary technicians are a valuable member of the animal health care delivery team. Come discover if this is a career for you!

Technical/Function Skills in Agriculture, Decision Making

Friday, Oct. 24, 11 p.m., Room 121-122

Friday, Oct. 24, 1 p.m., Room 121-122

Understanding Organic Agriculture

Presented by: Organic Valley Coop

Organic farming is a well-defined and regulated agricultural production system, but the USDA rules and organic production techniques are often not well understood. This workshop will be led by young but experienced organic farmers who were instrumental in converting their family farms to certified organic production. Topics covered will include the basic USDA Organic Rules, organic crop and livestock production techniques and lessons learned through practical experience. The presentations will be followed by an interactive learning experience and an open forum with the organic farmers.

Skills in Agriculture, Physical Growth, Decision Making

Friday, Oct. 24, 12:30 p.m., Wabash 3

Friday, Oct. 24, 2:30 p.m., Wabash 3

Healthy Horses—Medicine, Science and Research Careers

Presented by: American Association of Equine Practitioners Foundation

Horses depend on people to keep them healthy for the show ring, event arena, racetrack, trail riding or for the farm. A career in equine medicine, equine science or becoming an equine veterinarian can lead to healthy horses competing in national championships and even the Olympics. From draft horses to show ponies, from basic physiology to clinical research, or from nutrition to infectious diseases, horses need your skills in the future. Learn how your knowledge of large animals, horses and science can lead to great opportunities to help horses worldwide.

Professional Growth, Skills in Agriculture

Thursday, Oct. 23, 4:30 p.m., Wabash 3

Friday, Oct. 24, 10:30 a.m., Wabash 3

CSI: Solving Agronomic Mysteries!

Presented by: American Society of Agronomy

Every day, the lives of people around the world are made better by agronomy. From the endless green fields of corn and soybeans in the Midwest, the vast acres of cotton in the South, and the lush pastures of the Northeast, agronomists help make this happen. If you're interested in science and technology, the field of agronomy might be for you! Learn how you can use your natural curiosity and enthusiasm to help solve some of the toughest food problems facing humanity: safe and abundant food production. Attend this session and discover how detective work and problem solving helps feed the world!

Professional Growth, Skills in Agriculture

Thursday, Oct. 23, 3 p.m., Room 208-209

Veterinary Medicine SAE Proficiency Award: A New Opportunity for You Coming in 2009!

Sponsored by: American Veterinary Medical Association

The National FFA Organization and the American Veterinary Medical Association have teamed up to recognize FFA members who seek to develop skills and explore experiences in an exciting and advanced field of agriculture. Beginning in 2009, FFA members conducting supervised agricultural experiences related to veterinary medicine will have a new award opportunity. The Veterinary Medicine Proficiency Award will be available to students working alongside veterinarians and their staff in clinical practice, research facilities, colleges of veterinary medicine, animal health industry or other environments in which they assist veterinarians in performing duties related to the health of humans, large or small animals or the environment. Join us to learn the benefits of participation in FFA proficiency award programs; how to launch a veterinary medicine supervised agricultural experience (SAE) program; and the future critical need for qualified professionals in the ever-expanding field of veterinary medicine.

Action, Skills in Agriculture, Communication

Thursday, Oct. 23, 11 a.m., Room 121-122



National Days of Service



National Days of Service

The National Days of Service (NDoS) was such a huge hit last year that we're making it even better by adding the "Big Grill!" This year, participating members will receive lunch courtesy of Toyota. So make sure that you arrive for the afternoon shift at the times noted. FFA members participating in the morning shifts will receive lunch after returning from the NDoS site. FFA members will have the opportunity to volunteer at unique Indianapolis agencies and organizations that serve the community. Registration for these activities will occur through the online convention registration system. A mini-celebration will be held at each site in recognition of the contributions made by the NDoS participants and volunteers. For more details, contact the NDoS office, 317-802-4413, or ndos@ffa.org.

Gleaners Food Bank

Thursday, Oct. 23

Shift A

6:45 a.m. - Noon

Shift B

11:15 a.m. - 4:30 p.m.
(50 participants per shift)

Description: Groups will participate in a one and a half hour informational and educational session including a tour of Gleaners' 83,000 square foot warehouse. FFA volunteers will also work in one of two areas- the Commodity Supplemental Food Program (CSFP) and/or Salvage recovery. CSFP volunteering will include assembling cardboard boxes and filling them with 40 pounds of USDA

food for seniors participating in the CSFP program. Salvage recovery volunteers will inspect, clean, sort and pack food and critical grocery products. Once packed, these items will be available to more than 400 hunger relief charities that serve the area's hungry.

Habitat for Humanity

Thursday, Oct. 23

Friday, Oct. 24

Shift A (Thursday/Friday)
6:45 a.m. - Noon

Shift B (Thursday/Friday)
11:15 a.m. - 4:30 p.m.
(40 participants per shift)

Description: The mission of Habitat is to provide home ownership for low-income

National Days of Service are made possible by Timberland and Toyota as a special project of the National FFA Foundation.



Indianapolis Local
Organization Committee

families. FFA members will work with partners and sponsors to construct four homes, side-by-side on one block. Members will gain familiarity with the program components of educational classes and mentoring. Work on the house roofs will not be permitted due to safety concerns.

Indiana State Fair Commission

Thursday, Oct. 23

Friday, Oct. 24

Shift A (Thursday/Friday)
6:45 a.m. - Noon

Shift B (Thursday/Friday)
11:15 a.m. - 4:30 p.m.
(25 participants per shift)

Description: This is a two-step project. First, FFA members were invited to create a landscape design to be considered for implementation during the NDoS event hosted by this site. Second, the winning design, chosen by the Indiana State

Fair Commission, will be "brought to life" by the FFA members participating in this event. The project will take place in the courtyard between the recently relocated Normandy Barn and last year's State Fair Day of Service Project, the Normandie Greenhouse.

Indy Parks

Thursday, Oct. 23

Shift A 6:45 a.m. - Noon

Shift B 11:15 a.m. - 4:30 p.m.
(40 participants per shift)

Description: The project will consist of stream bank restoration by removing the invasive exotic species, amur honeysuckle and seeding the area with wild rye. Volunteers will then plant nearly 100 trees in more than 10 acres of green space along the Pleasant Run Greenway between (and including) Ellenberger Park and Washington Street. Activities also will include staking and





National Days of Service

mulching the newly planted trees when necessary.

Jameson Camp

Thursday, Oct. 23

Shift A 6:45 a.m. - Noon

Shift B 11:15 a.m. - 4:30 p.m.
(60 participants per shift)

Description: Volunteers will remove hundreds of invasive honeysuckle plants and undesirable small trees that are taking over wooded acreage on the camp's property. The other project involves digging up, transporting and replanting saplings and small trees that are currently growing in undesirable locations.

Maplelawn Farmstead

Thursday, Oct. 23

Friday, Oct. 24

Shift A (Thursday/Friday)
6:45 a.m. - Noon

Shift B (Thursday/Friday)
11:15 a.m. - 4:30 p.m.
(80 participants per shift)

Description: FFA members will aid in the installation and repair of fences, barns and farmhouse buildings. Additional activities may include shingle repair and roofing of short buildings. Participants will work with volunteers to create historically accurate landscaping for the 1930s era. Educational activities will involve period-appropriate landscape design and restoration.



Society of St. Vincent DePaul – Pantry Society of St. Vincent DePaul

Thursday, Oct. 23

Friday, Oct. 24

Shift A (Thursday/Friday)
6:45 a.m. - Noon

Shift B (Friday)
11:15 a.m. - 4:30 p.m.
(42 participants per shift)

Description: The Society of St. Vincent DePaul (SVDP) operates a food pantry program to assist community members in need. During this NDoS event, FFA members will assist food pantry clients with selec-

tion, bagging and loading groceries, re-packaging bulk products into family-serving sizes; sorting mixed food items, checking for expired products and re-stocking carts or totes. Educational activities on the importance of food pantry programs and the clients who are served will be part of this engaging activity.

Strides to Success

Friday, Oct. 24

Shift A 6:45 a.m. - Noon

Shift B 11:15 a.m. - 4:30 p.m.
(42 participants per shift)

Strides to Success is a creative program designed to serve youth by providing unique learning opportunities that strengthen and develop lives. The program incorporates academic standards, character education and the Search Institute's 40 Developmental Assets while utilizing equine-assisted activities in an interactive farm setting. FFA members will aid in the construction of an outdoor arena and fencing for three pastures and seed 10 acres of pasture.





Career Success Tours

Career Success Tour Descriptions

Career Success Tours require registration and cost \$10 per person. Register through the online convention registration. All tours originate from the Indiana Convention Center. Travel times are included in the itineraries shown.

Brickman Group Landscaping Indianapolis

Thursday, Oct. 23
8:15 - 11:45 a.m.
12:45 - 4:15 p.m.
Available spaces:
50 per tour

Founded in 1939, Brickman services include landscape maintenance and enhancement, design/build and installation and sports turf in a commercial setting such as sports fields for the Olympics in Australia, Greece and China. The tour will focus on discovering careers in landscaping, experiencing landscaping equipment, learning the elements of design with a landscaping architect and transforming landscapes with innovative pruning techniques.

Circle City Vet Specialty & Emergency Hospital Carmel

Thursday, Oct. 23
12:15 - 3:45 p.m.
Available spaces: 50

Participants will receive in-depth presentations on several veterinary specialties and learn how specialty medicine differs from veterinary general practice. A behind-the-scene tour will showcase state-of-the-art design and function as well as techniques and equipment used in the practice. A panel of boarded specialists will share the educational requirements needed to move beyond general medicine into a specialty.

CountryMark Westfield

Thursday, Oct. 23
8 - 11:30 a.m.
1 - 4:30 p.m.

Friday, Oct. 24
8 - 11:30 a.m.
1 - 4:30 p.m.

Available spaces:
50 per tour

Uncover the history behind CountryMark and the farmers that built Indiana's only American-owned oil company. See for yourself how liquid fuels travel through underground pipelines. Discover new generation fuels, such as ethanol and biodiesel and see what role these products will play in fueling America. Hear from top level executives about the exciting career choices available for energy and natural resources, which span from chemical, mechanical and computer engineering to marketing and fuel buying to welding

and transportation.

Dixie Chopper Coatesville

Wednesday, Oct. 22
1 - 5 p.m.

Thursday, Oct. 23
9 a.m. - 1 p.m.

Available spaces:
50 per tour

Participants will start their tour by learning about the lawn mower fabrication process at the Fillmore plant. The tour group will move to the assembly facility in Greencastle to see how the world's fastest lawn mower is built from start to finish.

Dow AgroSciences Indianapolis

Wednesday, Oct. 22
1:45 - 5:15 p.m.

Thursday, Oct. 23
7:45 - 11:15 a.m.
9:45 a.m. - 1:15 p.m.
11:45 a.m. - 3:15 p.m.
1:45 - 5:15 p.m.

Friday, Oct. 24
7:45 - 11:15 a.m.
9:45 a.m. - 1:15 p.m.
11:45 a.m. - 3:15 p.m.
1:45 - 5:15 p.m.

Available spaces:
100 per tour

This tour program consists of six demonstrations that fall into three general categories:

Discovery - These tour stops demonstrate the basic research that goes into identifying genes and chemicals that have insecticidal or herbicidal properties.

Predevelopment - These tour stops describe how a potential product is analyzed and assessed in the lab and field.

Development - These tour stops highlight the extensive environmental and health assessments that are carried out during development prior to launch.

Edelweiss Equine- Assisted Therapy Center Greenfield

Saturday, Oct. 25
8:15 - 11:45 a.m.
Available spaces: 50

Attendees will gain a better understanding of therapeutic riding and how it benefits people with a variety of challenges. Students will learn about vet care, therapeutic riding instructions, facility logistics and view types of harnesses and tack that must be used for safe driving of a horse. There will also be an opportunity to speak with the facility farrier.

Elanco Animal Health Indianapolis

Thursday, Oct. 23
8:15 - 11:30 a.m.
12:30 - 4 p.m.

Friday, Oct. 24
8:15 - 11:30 a.m.
12:30 - 4 p.m.

Available spaces:
50 per tour

Elanco Animal Health produces and sells pharmaceu-





Career Success Tours

ticals for the swine, poultry, beef, dairy and companion animal industries. This tour will touch on career opportunities. Students will also be visiting the Eli Lilly & Co school of manufacturing and quality. This facility simulates manufacturing processes needed to teach employees how to produce safe, quality products in a sterile environment.

Endangered Species Chocolate *Indianapolis*

Wednesday, Oct. 22
12:30 - 3:15 p.m.

Available spaces: 30

Students will learn about the candy-making process—from purchasing and production through shipping—and will even get to make their own chocolate. Presentation of the “Give Back Partnership” program will include footage from a recent trip to Ivory Coast and Nigeria.

Exotic Feline Rescue Center *Center Point*

Thursday, Oct. 23
8:45 a.m. - 12:45 p.m.

Friday, Oct. 24
8:45 a.m. - 12:45 p.m.

Available spaces:
50 per tour

Students will tour more than 30 acres of land devoted to the care of 187 beautiful exotic cats, such as lions, tigers, bobcats and

cougars. It will include all aspects of care: enclosures, social groups, behaviors, food (including the food prep building), waste disposal, vector control, veterinary care and the opportunity to ask plenty of questions along the way. Tour will be outside. Weather-appropriate dress is required.

Hoosier Park *Anderson*

Wednesday, Oct. 22
1 - 4:30 p.m.

Thursday, Oct. 23
8 - 11:30 a.m.
9:30 a.m. - 1 p.m.

Friday, Oct. 24
8 - 11:30 a.m.
9:30 a.m. - 1 p.m.

Saturday, Oct. 25
8 - 11:30 a.m.
9:30 a.m. - 1 p.m.

Available spaces:
50 per tour

FFA groups attending tours at Hoosier Park will get a behind-the-scenes look at thoroughbred racing. The tour will begin in the grandstand area with a brief history of the track and tour of the television studio, stewards’ stand, audio visual department and general seating areas of the track. A trip to the jockeys’ quarters allows access to the jockeys’ locker room. A driving tour to the backstretch takes students throughout the entire barn area to show the different aspects of the facility. The bus will stop at one of the

thoroughbred barns where FFA members can interact with racehorses and talk with a trainer. Weather-appropriate dress is required.

Indiana Downs *Shelbyville*

Wednesday, Oct. 22
1:15 - 4:45 p.m.

Thursday, Oct. 23
9:15 a.m. - 12:45 p.m.
1:15 p.m. - 4:45 p.m.

Friday, Oct. 24
9:15 a.m. - 12:45 p.m.
1:15 p.m. - 4:45 p.m.

Saturday, Oct. 25
9:15 a.m. - 12:45 p.m.

Available Spaces:
50 per tour

Enjoy a behind-the-scenes tour of the grandstands facility features the many different areas involved to produce a live racing program. Participants will tour the grounds and barn area. Based on availability, participants will be able to visit with: trainers, standard bred drivers, nutritionists, track security, track photographers and simulcast programmers. Weather-appropriate dress is required.

IndyCar Series and Indianapolis Motor Speedway Productions *Indianapolis*

Thursday, Oct. 23
9:30 a.m. - 12:30 p.m.
1:30 - 4:30 p.m.

Available Spaces:
50 per tour

FFA members will enjoy a

brief tour of the IndyCar Series and Indianapolis Motor Speedway headquarters, followed by a question and answer session with IndyCar and IMSP representatives to learn about what it takes to sanction, officiate, promote and broadcast IndyCar races. A tour of the Indianapolis Motor Speedway Hall of Fame Museum will follow.

IUPUI Center for Earth and Environmental Science *Indianapolis*

Thursday, Oct. 23
8:45 - 11:45 a.m.
12:45 - 3:45 p.m.

Available spaces:
50 per tour

Learn how research scientists and students at the Center for Earth and Environmental Science (CEES) and the Department of Earth Sciences at IUPUI are enhancing water quality and protecting drinking water resources through technologically advanced research and ecosystem restoration in urban environments. The tour group will see how the groundwater, streams, reservoirs and associated watersheds within central Indiana are studied to improve drinking water quality and promote environmental stewardship and education. The tour group will visit laboratories at IUPUI to experience new technologies related to the





Career Success Tours

CEES remote environmental monitoring network.

Janssen Veterinary Clinic

Sheridan

Thursday, Oct. 23
7 - 11 a.m.

Friday, Oct. 24
7 - 11 a.m.

Available spaces: 50

The staff of this six-veterinarian equine and small animal practice will guide you through the facility. Learn about the educational process to become a veterinarian or veterinary technician. Experience multiple areas of cutting edge technology and equipment utilized in an equine practice. Learn about Janssen Vet Clinic genetics, a new division that provides advanced reproductive services in small ruminants.

Keeton Elk Farm

Bainbridge

Available spaces:
50 per tour

Wednesday, Oct. 22
1 - 5 p.m.

Thursday, Oct. 23
7:45 a.m. - Noon
1 - 5 p.m.

Friday, Oct. 24
7:45 a.m. - Noon
1 - 5 p.m.

This elk farm has more than 200 head of the top antler production elk in the world. The tour will include a dis-

cussion of the elk industry, the breeding programs, the feeding and medical care of the elk and more. Participants will taste elk meat, tour the handling facilities and pet the elk. Students will also take a wagon ride into the bull pasture. Weather-appropriate dress is required.

Lincoln College of Technology

Indianapolis

Thursday, Oct. 23
12:30 - 3 p.m.
2:30 - 5 p.m.

Friday, Oct. 24
8:30 - 11 a.m.
10:30 a.m. - 1 p.m.

Available spaces:
50 per tour

The transportation industry is greatly affected by the high cost of fuel. Attendees will participate in a presentation on how E-85 and other alternative fuels can help ease the financial crunch and learn pros and cons of an alternate source of energy. The fuel conversation will be followed by a tour that features a hands-on shop environment. The shops hold a variety of engines and vehicles including medium and heavy-duty trucks, a flex-fuel light duty truck and a hybrid car. Students can see examples of how to perform diagnostics, repairs and maintenance. In addition, the tour will include diesel hydraulics and weld-

ing. Groups will also have the opportunity to tour a collision repair shop.

National Starch Food Innovation

Indianapolis

Thursday, Oct. 23
7:45 - 9:45 a.m.
9:45 - 11:45 a.m.
1:45 - 3:45 p.m.

Friday, Oct. 24:
7:45 - 9:45 a.m.
9:45 - 11:45 a.m.
1:45 - 3:45 p.m.

Available spaces:
50 per tour

National Starch Food Innovation offers more than 400 kinds of specialty starches made from regular, waxy and high amylase corn and used in a host of applications across the food, paper and pharmaceutical industries. Students will learn about the industries and customers National Starch serves, the agricultural supply chain needed to source the corn types required for these products and some of the processes behind making these products.

Not Just Popcorn/ Weinantz Farm

Edinburgh

Thursday, Oct. 23
8 a.m. - Noon

Friday, Oct. 24:
8 a.m. - Noon
Available spaces:
50 per tour

Not Just Popcorn, in conjunction with Weinantz Farm, will take you from a beginning-to-end process from growth to retail for gourmet popcorn. Starting the tour at Weinantz Farms, the students will learn the regulator guidelines and processes for production of consumer food grade popcorn. The students will then go to Not Just Popcorn and see popping, candy coating, packaging and distribution through wholesale and retail.

Purdue University

West Lafayette

Wednesday, Oct. 22
12:45 - 6 p.m.

Thursday, Oct. 23
7:15 a.m. - 2:30 p.m.
10:15 a.m. - 5:30 p.m.

Friday, Oct. 24
7:15 a.m. - 2:30 p.m.
Available spaces:
50 per tour

Students will gain hands-on experience in science and agriculture from Purdue University's College of Agriculture faculty and staff. Learn how agriculture and science are closely related and are shaping our world's food and natural resource systems. Participate in experiments and other hands-on lessons taught by top instructors at Purdue University. Lunch will be included in the Thursday and Friday tours only.





Career Success Tours

Red Gold Tomato

Elwood

Thursday, Oct. 23

Noon - 4 p.m.

2 - 6 p.m.

Available spaces:

30 per tour

The Red Gold Ketchup and Tomato Sauce manufacturing tour will begin with a brief overview and history of a family-owned and operated company that has been in business for more than 65 years. Members of the family and staff, along with employees from the "Quality of Worklife" teams, will show participants how ketchup and other tomato-based sauces are made. The tour will end with a question and answer session including chips and salsa. Good Manufacturing Practices must be observed. More information upon registration.

Reynolds Farm Equipment

Fishers

Thursday, Oct. 23

7:15 - 10:45 a.m.

12:15 - 3:45 p.m.

Friday, Oct. 24

7:15 - 10:45 a.m.

12:15 - 3:45 p.m.

Available spaces:

50 per tour

Reynolds Farm Equipment, a family-owned and operated John Deere dealership, has been serving Central Indiana since 1955. This tour will explore facets of business to consider when looking



into a career in agriculture. Learn about the service sector including vehicle expenses versus return on the dollar; charges and compensations. Hear about risk-management and crop insurance. Discover Agricultural Management Solutions as it relates to seeding, tillage and harvesting.

Sensient Flavors

Indianapolis

Friday, Oct. 24

8:30 a.m. - Noon

1 - 4:30 p.m.

Available spaces:

20 per tour

Sensient Flavors supplies custom-designed flavors and flavoring systems to the food, beverage, bakery, dairy and confectionery industries. Explore careers in food science, discover culinary solutions, encounter a hands-on sensory experience, investigate nutritional and pet food ingredients and learn about organic guidelines and regulatory requirements.

Tractor Supply Company

Pendleton

Thursday, Oct. 23

9 a.m. - 12:30 p.m.

Friday, Oct. 24

9 a.m. - 12:30 p.m.

Available spaces:

50 per tour

Tractor Supply Company (TSC) is the leading retail farm and ranch store brand in America. Founded in 1938 as a mail order tractor parts business, TSC owns and operates more than 750 stores in 40 states supplying daily farm and ranch maintenance supplies to a targeted customer base. Students will take a tour of 750,000-foot distribution center that services nearly 200 tractor supply stores and learn about the career opportunities.

Victory Field

Indianapolis

Thursday, Oct. 23

12:30 - 3:30 p.m.

Friday, Oct. 24

12:30 - 3:30 p.m.

Available spaces:

50 per tour

This minor league baseball park tour will allow attendees to see all turf operations including grass selection, mowing, cultural practices, design, irrigation and construction. Turf management vendors will also participate in a panel discussion to share information regarding equipment, fertilizer, fungicides and more. Other aspects of the Indianapolis Indians baseball operation may be included.





NATIONAL FFA CONVENTION
October 22-25, 2008

National FFA Organization
6060 FFA Drive
P.O. Box 68960
Indianapolis, IN 46278-1370

P: 317-802-6060
F: 317-802-6061

www.ffa.org

Educational Tours and the National FFA Offices Tours

Educational Tours

Allison Transmission, Inc.

www.allisontransmission.com

317-242-0614

Indianapolis

Travel time from convention center: 20 minutes

Open: Oct. 24, 9 - 11:30 a.m. **Tour by reservation only.**

Groups: 1-60

Cost: No Fee

Visitors will witness the excitement of the newest manufacturing and assembly plant within Allison Transmission, Inc. A plant overview and elaborate plant tour will provide insights to all visitors relative to our global business and our worldwide recognition for reliable, durable transmissions used in both medium and heavy-duty truck markets. Attendees must wear closed-toe shoes. Safety glasses will be provided. Non-U.S. citizens need proper documentation. No cameras are permitted in the facility.

Archives for the National FFA Organization

<http://www.ulib.iupui.edu/special/ffa>

317-278-2329

Indianapolis

Travel time from convention center: 10 minutes

Open: Oct. 20-23, 8 a.m. - 6:30 p.m.

Oct. 24, 8 a.m. - 5 p.m.

Groups: Unlimited

Cost: No Fee

Ever wonder how past champions would compare to today's standards or today's champions with standards of old? Come find out with "You Be the Judge!" With photographs and judging criteria from the Archives of the National FFA Organization, rate the livestock with the criteria sheets from various times. While at the archives, see the beginnings of your

The FFA Mission: FFA makes a positive difference in the lives of students by developing their potential for **premier leadership, personal growth and career success** through agricultural education.

organization and get an understanding of what makes it so great. Relive past FFA experiences while creating your own.

Bonneyville Mill

www.elkhartcountyparks.org

574-825-9324

Goshen, Ind.

Travel time from convention center: 3 hours, 30 minutes

Open: Daily 10 a.m. - 5 p.m.

Group: 10-25

Cost: \$2 per person

Visit the oldest continuously operating grist mill in Indiana. This site is also listed on the National Register of Historic Places.

Carley Elk Farm

www.elk4u.com

317-502-6999

Atlanta, Ind.

Travel time from convention center: 1 hour

Open: Anytime **Tours by reservation only.**

Group: Unlimited

Cost: \$5 per person

Carley Elk Farm raises Indiana's largest herd of elk bulls. Explore this alternative livestock niche operation by touring the farm and pastures, sample elk meat and discover the uses of elk through explanations and a Q&A session on elk cows, calves, bull and antlers. Call for catered dinner prices. Added this year: a whitetail deer herd display.

The Children's Museum of Indianapolis

www.childrengmuseum.org

317-334-3258

Indianapolis

Travel time from convention center: 15 minutes

Open: Oct. 21-26, 10 a.m. - 5 p.m.

Groups: 10-20

Cost: \$6.50 per youth (ages 2-17) \$10.50 per adult

Join us at the world's largest children's museum for an exploration in biotechnology and dinosaur science! Explore the world of agricultural biotechnology in our Biotechnology Learning Center by doing hands-on activities. Then get a behind-the-scenes look and meet with our resident paleontologist to learn about the unique dinosaur fossils in Dinosphere. After spending time with our science experts, discover the rest of this extraordinary museum at your own pace. Call to schedule your tour.

Colonel Eli Lilly Civil War Museum (Soldiers and Sailors Monument)

www.in.gov/iwm

317-233-0528

Indianapolis

Travel time from convention center: 5 minutes

Open: Oct. 22-24, 9:30 a.m. - 5:30 p.m.

Group: 10-40

Cost: Tour is free; elevator to the top costs \$1 per person

Located in the lower level of the Soldiers and Sailors Monument, the museum displays various artifacts and information from the Civil War. Visitors can listen to actual letters sent to and from soldiers during the war. Videos covering camp life, battles and the arduous task of marching help the visitor understand the experience of the soldier. Please call in advance to arrange a tour guide.

Conner Prairie

www.connerprairie.org

317-776-6000

Fishers, Ind.

Travel time from convention center: 45 minutes

Open: Oct. 22-25, 10 a.m. - 5 p.m. **Tours by reservation only.**

Groups: Unlimited

Cost: \$5 per person

Step into the hustle and bustle of a thriving pioneer community and become part of the daily drama of the 19th century. Explore life on the farm in a lively rural atmosphere. Join the action by helping with the chores and tending the animals. Learn about our historic breeds. Ask the Ag Man at the Conner Barn.

Crown Hill Cemetery

www.crownhill.org

317-920-2644

Indianapolis

Travel time from convention center: 8 minutes

Open: Oct. 20-26, 8 a.m. - 5 p.m. **Specialty tours by reservation only.**

Group: 20-35

Cost: \$2.50 per person

Visit our nation's largest cemetery, covering 555 acres of rolling hills close to the heart of Indianapolis. Founded in 1863 at the height of the Civil War, Crown Hill Cemetery is the final resting place of President Benjamin Harrison, three U.S. vice presidents, thousands of Civil War soldiers, Indianapolis 500 personalities, the infamous bank robber John Dillinger and many prominent business, civic and cultural leaders. All total, there are more than 195,000 people buried at Crown Hill Cemetery, each with a unique story to be told. The Heritage Tour, the most popular tour, takes visitors to the top of the highest hill in Indianapolis where you can see the entire city skyline. Also available is the Tree Tour, featuring many trees native to Indiana. Both are walking tours that cover about one mile and last 90 minutes. Tours must be scheduled in advance. Students are also welcome to visit Crown Hill on their own, with a tour guide, at no charge.

CTB, Inc.

The FFA Mission: FFA makes a positive difference in the lives of students by developing their potential for **premier leadership, personal growth and career success** through agricultural education.

www.ctbinc.com

574-658-5125

Milford, Ind.

Travel time from convention center: 3 hours

Open: Oct. 20-24, 1 p.m. only

Groups: 6-40 **Tours by reservation only.**

Cost: No Fee

Watch fabrication processes associated with the manufacture of feed and grain bins and other metal components in the Brock plant. Then travel to CTB's Chore-Time plant and view the fabrication of components for poultry and hog feeders, drinkers and other components. Visitors will also get an overview of the products being manufactured and their uses in the field.

DeBrand Fine Chocolates

www.debrand.com

260-969-8335

Ft. Wayne, Ind.

Travel time from convention center: 2 hours, 5 minutes

Open: Oct. 21 at 10 a.m.; Oct. 23 at 1 p.m. **Groups of 12 or more by reservation only.**

Groups: 1-55

Cost: \$5 per person

Visit the DeBrand Fine Chocolates headquarters for a unique tour to learn about the chocolate-making industry. Students will see the mail order department and three different chocolate kitchens where the chocolate-making process takes place. They will also be able to sample several treats along the way. The tour will end in DeBrand's elegant chocolate shop where students will have the opportunity to use a certificate to purchase chocolate temptations. DeBrand also has a chocolate café where students can sit and enjoy delicious desserts and drinks--all made from scratch with DeBrand chocolate.

Dow AgroSciences

www.dowagro.com

Register: <http://2008dowagro.theregistrationsystem.com>

Indianapolis

Travel time from convention center: 30 minutes

Open: Oct. 20, 10 a.m. and 2 p.m.; Oct. 21, 8:30 a.m. and 2 p.m.; Oct. 22, 8 a.m. and 11 a.m.

Tours by reservation only.

Group: 50-100

Cost: No Fee

Tour Dow AgroSciences' world headquarters Research and Development building, where you will learn how products are discovered and developed while participating in hands-on demonstrations.

Eiteljorg Museum

www.eiteljorg.org

317-275-1350, ext. 1

Indianapolis

Travel time from convention center: 5 minutes

Open: Oct. 20-25, 10 a.m. - 5 p.m.; Oct. 26, Noon - 5 p.m.

Groups: Unlimited

Cost: Walk-ins cost \$5 per person with FFA badge. Group rate is \$3 per person with advance registration

The Eiteljorg Museum immerses visitors in the many cultures of the American West and Native America through exhibitions, special events, guided tours and hands-on interactive carts. The Eiteljorg is uniquely poised to tell the story of how agriculture and agricultural products shaped the lives of American Indians and Western settlers. This is the only museum in the Midwest to offer this unique combination.

Elsbury's Greenhouses and Garden Center

812-378-2622

Hope, Ind.

Travel time from convention center: 1 hour

Open: Oct. 21-23. **Tours by reservation only**

Groups: 10 and up

Cost: No Fee

Take a behind-the-scenes tour of one of the largest greenhouses in the state of Indiana, and one of the very few that specializes in trial varieties of new poinsettias. This family-owned 70,000-square-foot greenhouse offers more than 2,000 varieties of annuals, perennials, herbs, hanging baskets, fall garden mums and poinsettias.

English's Buffalo Farm

www.englishsbuffalofarm.com

765-522-7777

Bainbridge, Ind.

Travel time from convention center: 1 hour

Open: Daily 8 a.m. - 6 p.m. **Tours by reservation only.**

Group: Unlimited

Cost: No Fee

Visit this family owned buffalo farm, watch buffalo roaming the pastures and take a tour to see the handling equipment and pens. Also, observe how the owner cleans and processes animal skulls. While at the farm, enjoy a delicious bison burger or bison hot dog. Don't forget to visit the Trading Post where meat, by products and souvenirs are sold.

Exotic Feline Rescue Center

www.exoticfeline rescuecenter.org

812-832-1130

Center Point, Ind.

Travel time from convention center: 1 hour, 15 minutes

Open: Daily 10 a.m. - 5 p.m. **Tours by reservation only**

Group: Unlimited

Cost: \$10 per person and \$5 per child (12 and under). Groups of 20 or more, \$8 per person and \$4 per child (12 and under)

Tours are designed to educate the public about the plight of endangered cats, such as lions, tigers, bobcats and cougars, in captivity and the wild. The tour will cover about 25 acres of natural habitat and will include information on nine species of cats including enclosures, social groups, enrichment, food and veterinary care. Tour is outside; wear weather-appropriate clothing and comfortable shoes.

Fair Oaks Farm

www.fofarms.com

877-536-1194

Fair Oaks, Ind.

Travel time from convention center: 2 hours, 10 minutes

Open: Oct. 20-25, 9 a.m. - 5 p.m.; Oct. 26, 10 a.m. - 5 p.m.

Group: Unlimited

Cost: \$4 per person

Tour one of the largest dairy farms in the United States. Enjoy more than 40 interactive exhibits, see ice cream and cheese being made and sample products.

The Flower Barn

www.theflowerbarn.net

765-482-3061

Lebanon, Ind.

Travel time from convention center: 40 minutes

Open: Daily Tours by reservation only

Group: 20-55

Cost: \$10.95 per person (includes lunch)

Visit this one-of-a-kind flower farm and enjoy a presentation on growing and drying flowers. You'll learn about the different varieties of flowers and see the results from drying. A delicious lunch will be served with the program.

Hatfield 7 Dairy

www.mooschool.com

740-403-6693

Centerburg, Ohio

Travel time from convention center: 3 hours, 35 minutes

Open: Oct. 20-26, times vary. **Tours by reservations only and must be made a minimum of one week prior to visit**

Group: 1-125

Cost: \$5 per person

Our seven-generations, 1,000-cow dairy specializes in educational experiences including a focus on environmental stewardship, hands-on action and feed rations. We're located only 20 miles from Route 70 and 12 miles from I-71 and Route 36, north of Columbus, Ohio.

This family farm welcomes FFA members to visit a production dairy and experience the science and advancements in today's dairy industry.

Heritage Farm Suri Alpacas

www.ourheritagefarm.com

765-566-3077

Flora, Ind.

Travel time from convention center: 1 hour, 30 minutes

Open: Oct. 20 - 23. **Tours by reservation only and must be made prior to Oct. 10.**

Group: 1-25

Cost: No Fee

Tour a working alpaca farm featuring 25 suri alpacas. Owners will discuss career opportunities as well as pasture, fencing, shelter and nutritional requirements for the alpacas. Raw and processed alpaca fiber as well as fiber products such as socks, sweaters, scarves and gloves will be displayed.

Hoosier National Forest, Brownstown Ranger District

<http://www.fs.fed.us/r9/hoosier/>

812-276-4721

Bedford, Ind.

Travel time from convention center: 1 hour, 25 minutes

Open: Oct. 20, 21 and 24 at 1 p.m. **Tours by reservation only**

Group: 10-40

Cost: No Fee

Tour Hoosier National Forest to learn agricultural practices of the early settlers, efforts by the Civilian Conservation Corp (CCC) to stabilize soils, current management of the forest and how to stand out while looking for a future with the USDA Forest Service. Special features include a demonstration of wilderness trail construction using a mule-drawn plow. Enjoy a spectacular view of the forest from the 1936 Hickory Ridge Fire Tower.

Hoosier National Forest, Tell City

<http://www.fs.fed.us/r9/hoosier/>

812-547-9235

Tell City, Ind.

Travel time from convention center: 3 hours

Open: Oct. 25 and 26, 9 a.m. - 2 p.m.

Group: 10- 40

Cost: No Fee

The tour begins with a 1.2 mile-hike through Hemlock Cliffs, an area featuring sandstone formations, seasonal waterfalls, unique plant species and several rock shelters. The tour continues at Otter Creek Wetland, located along the Little Blue River. Purchased by the Forest Service, this mile of river bottomland offered a superb opportunity to restore a riparian ecosystem and demonstrate the values of riparian area management to local land owners. Learn how this area, previously drained and used for farmland, has been restored and is now teeming with wildlife. Next the tour will continue to Pioneer Mothers, an 88-acre, old-growth forest. This site has been virtually undisturbed since 1816 and is the last

virgin area of its size left in Indiana. In addition to large old-growth trees, the area also contains an important archaeological site.

Hunter's Honey Farm

www.HuntersHoneyFarm.com

765-537-9430

Martinsville, Ind.

Travel time from convention center: 1 hour

Open: Oct. 19-26, 7 a.m. - 7 p.m.

Group: 1-75

Cost: \$7 per person

Tour a real honey farm and watch bees in the live observation hive, candles dipped and honey extracted and bottled. Also sample 12 different varieties of honey. FFA members will visit a live beehive with the beekeeper and locate the queen bee. In addition, each member will make their own beeswax candle to take home along with a complimentary gift bag.

Indiana Downs

www.indianadowns.com

317-421-0000

Shelbyville, Ind.

Travel time from convention center: 30 minutes

Open: Oct. 20-26, 9 a.m. - 9 p.m.

Group: 5-75

Cost: No Fee

Tour the grandstands facility for a behind-the-scenes look at live horse racing at a major hospitality venue.

Indiana Medical History Museum

www.imhm.org

317-635-7329

Indianapolis

Travel time from convention center: 15 minutes

Open: Oct. 22 by reservation only; Oct. 23, 10 a.m. - 6 p.m.; Oct. 24, 10 a.m. - 4 p.m. (last tour starts at 3 p.m.); Oct. 25, 10 a.m. - 4 p.m. (last tour starts at 3 p.m.)

Group: 1-30 (more than eight, please call)

Cost: \$1 per person

The pathology building was described as the most modern lab in the world when it opened in 1896. The museum represents the beginning of scientific psychiatry and modern medicine while the building itself is the oldest-surviving pathology facility in the nation and is on the National Register of Historic Places. The museum maintains a collection of scientific artifacts from the 19th and 20th centuries in a completely authentic setting.

Indiana Transportation Museum— Pumpkin Train

The FFA Mission: FFA makes a positive difference in the lives of students by developing their potential for premier leadership, personal growth and career success through agricultural education.

www.itm.org

317-773-6000

Noblesville, Ind.

Travel time from convention center: 45 minutes

Open: Oct. 23-25. **Tours are by reservation only.**

Group: 1-140

Cost: \$12 per person

Indiana Transportation Museum, a 40-year-old museum located in Noblesville, just northeast of Indianapolis, annually hosts a sell-out Pumpkin Train. It will be featured this fall in *Midwest Living* magazine. After riding the train for about 20 minutes north to the small community of Arcadia, students will disembark and hear about a unique collaboration, tour the pumpkin patch area and learn the business end of the joint venture. On the way back, students will enjoy apple cider and a cookie for a little fall fun.

Indiana War Memorial

www.in.gov/iwm

317-233-0528

Indianapolis

Travel time from convention center: 5 minutes

Open: Oct 22-24, 9:30 a.m. - 5:30 p.m.

Group: 10-40

Cost: No Fee

Visit this free military museum that portrays the history of Indiana's gallant veterans from the Battle of Tippecanoe, through the several wars in which we have been engaged, to the present. Among the interesting items on display is the commission plate of the battleship USS Indiana, a Korean War era helicopter and hundreds of other artifacts, photos and documents.

Indianapolis Art Center

www.indplsartcenter.org

317-255-2464, x 249

Indianapolis

Travel time from convention center: 20 minutes

Open: Call for times

Group: Depends on activity

Cost: Depends on activity

The Indianapolis Art Center offers a variety of activities for groups--building tours, demonstrations and hands-on activities in a variety of media. Visit the website or call for details.

Indianapolis Fire Department—Survive Alive!

www.survivealive.org

317-327-6707

Indianapolis

Travel time from Convention Center: 20-30-minute walk

Open: Oct. 20-22, 1 - 4:30 p.m.; Oct. 23-24, 8:30 a.m. - 4:30 p.m. **Tours by reservation only.**

Group: 1-50

Cost: No Fee

Visit an actual house and identify hazardous situations you might encounter at your home. Learn about weather and environmental emergencies at the recently opened Survive Alive Shelter and Place. End your tour with a walk-through of the on-site museum at Old Station 2 (circa 1880), which includes a fire engine and living quarters of the period.

Indianapolis Motor Speedway Grounds Tour

www.indianapolismotorspeedway.com/museum

317-492-6747

Indianapolis

Travel time from Convention Center: 15 minutes

Open: Oct. 20-26, 8 a.m. - 6 p.m. **Reservations are advised**

Group: 1-30

Cost: \$15 per person

This tour includes museum admission and a 90-minute guided tour. The guided tour provides a journey through the Speedway's rich history and visits to landmarks open only to officials, drivers and teams. Grounds Tour guests will take a lap on the track in a bus, get off the bus at the world-famous "Yard of Bricks" at the start/finish line and visit the time and scoring suite in the Bombardier Learjet Pagoda, the Media Center, Victory Podium and the Gasoline Alley garage area. Information will be provided on such topics as safety issues, including the safe barrier walls, and the use of ethanol for fuel. Guests may take pictures on the entire tour.

Indianapolis Motor Speedway Museum and Track Tour

www.indianapolismotorspeedway.com/museum

317-492-6747

Indianapolis

Travel time from Convention Center: 15 minutes

Open: Oct. 20-26, 8 a.m. - 6 p.m. **Reservations are advised**

Group: Unlimited

Cost: Museum, Adults \$3, Youth (ages 6-15) \$1

Track Tour, Adults \$3, Youth (ages 6-15) \$1

Visit the Indianapolis Motor Speedway and the Hall of Fame Museum, home to one of the largest and most diversified collections of cars in the world. It includes more than 30 "500" winning cars including Ray Harroun's historic Marmon "Ways" winner of the first "500" in 1911. Take the narrated bus tour on the 2 ½-mile track.

Indianapolis Zoo and White River Gardens

www.indianapoliszoo.com

317-630-2180, please call Monday- Friday 9 am – 3 pm

Indianapolis

Travel time from Convention Center: 5 minutes

Open: Oct. 20-23, 9 a.m. - 4 p.m.; Oct. 24-26, 9 a.m. - 5 p.m.

Group: Unlimited

Cost: \$6 per person with advanced registration, \$9 per person at door. **Must register a minimum of two weeks prior to visit and must wear official dress or name tag to receive discount**

Explore the Indianapolis zoo and gardens with your FFA chapter to learn more about animals from around the world. Exhibits at the zoo highlight various habitats, including plains, deserts, forests and oceans. Tour admission includes admission to the gardens. Explore the variety of plants found in the outside garden areas and at the Hilbert Conservatory. As a special opportunity for FFA members, trained naturalist carts will be stationed throughout the zoo. Naturalists will be available Tuesday through Friday to answer your questions about careers, zoo services, horticulture and other zoological topics. Don't miss this opportunity!

Integrity Biofuels

www.integritybiofuels.com

765-763-6020

Morristown, Ind.

Travel time from Convention Center: 45 minutes

Open: Daily 8 a.m. - 5 p.m.

Group: 1-40

Cost: No Fee

Students will learn the process of taking soybean oil and converting it to biodiesel. Discuss the biodiesel industry, and its projected path for the future. The plant tour will show the processor used for production and the load-out facility used for distribution. Students will have a chance to see how we can reduce our dependence on petroleum oil and capture fuel from our fields.

Keeton Farms

877-852-8960

Bainbridge, Ind.

Travel time from Convention Center: 1 hour

Open: Oct. 21 and Oct. 25 **Tours by reservation only.**

Group: 1-100

Cost: \$3 per person

See some of the largest elk antlers in the world. There are more than 200 elk on the farm, including calves and bulls with antlers. Take a tour of the farm and facilities. Students will have the chance to taste elk meat and pet an elk while they learn about the elk industry. The tour is outside so weather-appropriate dress is recommended.

Kelsay Farms

www.kelsayfarms.com

317-535-4136

Whiteland, Ind.

Travel time from Convention Center: 25 minutes

Open: Daily 8 a.m. - 8 p.m.

Group: 10-100

Cost: \$5 per person

Visit the 1970 Star Farmer of America's dairy farm! Kelsay Farms, a sixth-generation family farm operating since 1837, milks 500 cows three times a day. The tour focuses on the milking system, feed management, manure management and the benefits and challenges of farming within miles of a large city. Other highlights include information on dairy foods and nutrition, a dairy snack and complimentary gift. Come and enjoy a corn maze and other fall activities too!

Keystone Steel & Wire Company

www.keystonesteel.com

800-447-6444

Peoria, Ill.

Travel time from Convention Center: 3 hours, 30 minutes

Open: Oct. 20-25. **Tours are by reservation only.**

Group: 1-110

Cost: No Fee

Founded in 1889, the Keystone Steel & Wire Company began in a humble shed on a rented farm in Dillon, Ill. Peter Sommer invented a machine that wove steel wire fence to replace traditional wooden timber fences. This invention made life easier for millions of American farmers and spawned a Midwestern steel giant. Around 1925, the first "Red Brand" fence appeared. In a display of modern marketing savvy, a Keystone employee dipped the tops of Keystone wire and fence post in red paint, making the new Red Brand® products instantly recognizable on farms all over America. Today, Keystone still tops off these products with a coat of red paint--even the barbs on coils of barbed-wire. Keystone's Bartonville, Ill., campus is one of the largest wire mills in the world with more than 2,000,000 square feet of manufacturing space on more than a thousand acres. Last year, Keystone's 1,600 employees produced more than 650,000 tons of steel.

Lincoln College of Technology/Lincoln Technical Institute

www.lincolnedu.com

800-554-4465

Indianapolis

Travel time from Convention Center: 25 minutes

Open: Oct. 23, 9 a.m. - 5 p.m.; Oct. 24, 9 a.m. - 1 p.m.

Group: 5-100

Cost: No Fee

From its beginnings as Lincoln Technical Institute in 1946 to its current status as one of the nation's leading providers of career education and training, Lincoln Education Services Corporation ("Lincoln") is committed to providing students with the quality, hands-on skills and training they need to succeed in an ever-changing employment landscape. Tour the hands-on technical institute and the collision repair center that acts as a working classroom.

McNamara Florist

The FFA Mission: FFA makes a positive difference in the lives of students by developing their potential for **premier leadership, personal growth and career success** through agricultural education.

www.mcnamaraflorist.com

317-579-7600

Fishers, Ind.

Travel time from Convention Center: 30 minutes

Open: Oct. 20-25, 8 a.m. - 5 p.m.

Group: 10-55

Cost: No Fee

Take a behind-the-scenes look at a floral design production and supply facility that supports eight retail locations as well as a customer order phone bank. Students will see the process involved from the reception of fresh flowers from around the world to the finished designs leaving by colorful company delivery vans. The 58,000-square-foot facility also serves as a receiving, pricing and distribution point for suppliers and giftware to stock McNamara flower shops.

Modern Masters of Landscape Design

www.columbus.in.us

812-378-2622

Columbus, Ind.

Travel time from Convention Center: 50 minutes

Open: Oct. 21-23 **Tours by reservation only.**

Group: 10 and above

Cost: \$5 per person

Interested in landscape design or landscape construction? On this walking tour, you will see hidden jewels of modern landscape design that feature clean grid patterns, well-trimmed shrubs and trees used in a linear fashion to compliment the modern architecture. Influential landscape architects Dan Kiley, Jack Curtis and Michael Van Valkenburgh have made their mark on Columbus just as they have made their mark in the field of landscape design. Learn why Columbus received two national awards in 2008 from America in Bloom. The walking tour is outside so weather-appropriate dress is recommended.

Montgomery Farms

www.montgomery-farms.com

812-752-2300

Underwood, Ind.

Travel time from Convention Center: 1 hour, 30 minutes.

Open: Oct. 19-23, 10 a.m. - 6 p.m.; Oct. 24-25, 10 a.m. - midnight

Group: 1-200

Cost: \$5 per person

See how a determined farm family has carved out a niche market by converting a farming operation into a playground for urban folk to experience a farming environment and a taste of the country life. Starting with a corn maze in 2000, Montgomery Farms has expanded into more than 20 activities including haunted hayrides, hayrides to the pumpkin patch, barn loft swings, corn cob cannons, a petting zoo, cow trains and a bard shop with pumpkins, fall flowers, gifts and more. All scheduled FFA tour participants will attend a short seminar discussion and receive passes to the corn forest/maze, forest hayride and a round on the cob cannons.

National Corvette Museum

www.corvettemuseum.com

Bowling Green, KY

270-781-7373

Travel time from Convention Center: 3 hours, 30 minutes

Open: Daily 8 a.m. - 5 p.m. **Tour by reservation and must be made a minimum of three weeks in advance**

Group: Any size

Cost: \$3, commemorative lapel pin is included

Step into the National Corvette Museum. Change tires, gas up and help keep the Corvette race car on the track at the “Pit Crew Challenge” interactive exhibit and see the world’s only display of the Corvette 3s! Also, guests will see more than 75 rare and unique Corvettes and can shop in a 3,000-square-foot Corvette Store.

NCAA Hall of Champions- closed temporarily

The NCAA Hall of Champions will open with all new exhibits in late 2008

Please visit www.ncaahallofchampions.org to plan future visits, 317-916-HALL (4255)

Not Just Popcorn

www.notjustpopcorn.com

812-526-8256

Edinburgh, Ind.

Travel time from Convention Center: 45 minutes

Open: Oct. 20-25, 10 a.m. - 6 p.m.; Oct. 26, Noon - 5 p.m.

Group: 1-50

Cost: \$2 per person

Visit this one of a kind popcorn facility. Watch as the popcorn is popped, candy coated and packaged for distribution through wholesale and retail. The tour ends with a tasting of Chicago Cheddar, candy coated and savory-flavored popcorn. It is a very hometown, family operation that will leave you popping with new excitement.

Purdue University

www.purdue.edu/goinach

765-494-8470

West Lafayette, Ind.

Travel time from Convention Center: 1 hour, 15 minutes

Open: Oct. 23-24, tours begin at 10 a.m. and 2 p.m.

Group: 1-120

Cost: No Fee

Learn about Purdue University! Tour the campus with Purdue students and see the beautiful sites of our campus. Enjoy hearing about Purdue from admissions representatives and current students.

South Side Landfill, Inc.

317-247-6808

Indianapolis

Travel time from Convention Center: 15 minutes

Open: Oct. 22-24, 8 a.m. - 5 p.m. **Tours by reservation only.**

Group: 10-60

Cost: No Fee

Operating since 1971, more than 200 methane gas wells have been inserted directly into the solid waste of the landfill, pulling the methane gas out and transferring it to Crossroads Greenhouse, one of the largest methane gas-controlled greenhouses in the nation and other surrounding businesses in the area.

Traders Point Creamery

www.traderspointcreamery.com

317-733-1700

Zionsville, Ind.

Travel time from Convention Center: 30 minutes

Open: Daily 9 a.m. - 6 p.m.; FFA day at the Farm, Oct. 23, 10 a.m. - 2 p.m.

Groups: 5-30

Cost: \$6 per person

Visit the only creamery in the country to provide 100 percent grass-fed milk in a bottle! View the production of organic, award-winning cheese, milk, yogurt and ice cream. Tour the grass-based Dairy Farm with Brown Swiss Cows and more than 320 acres of rolling Indiana farmland while taking a safari ride or a walking tour. Then visit the milking parlor, production room, dairy bar, restaurant, retail store and more! All tours include a sample of America's best yogurt and the Cheese Society's award-winning cottage cheese, Fromage Blanc; Traders Point's very own raw milk cheese, Fleur de la Terre; and a delicious ice cream treat at our Dairy Bar! Also, check out FFA day at the Farm; see our website for exciting details.

Tuttle Orchards

www.tuttleorchards.com

317-326-8488

Greenfield, Ind.

Travel time from Convention Center: 35 minutes

Open: Daily 9 a.m. - 6 p.m.

Group: 15-35

Cost: \$3 per person

See a broadly diversified horticulture business growing apples, vegetables and greenhouse crops. Learn about the different possibilities of "Going Green" with your career in the horticulture industry. Agritourism, fruit production, greenhouse crops and vegetable production will be covered. An emphasis is placed on apple production in our fall tours, including the observation of a beehive, apple storage and cider production. Each person will sample apples and cider. A corn maize and farm market are also on site.

Waterman's Farm Market

www.watermansfarmmarket.com

317-357-2989

Indianapolis

Travel time from Convention Center: 20 minutes

Open: Oct. 20-26, 9 a.m. - 6 p.m.

Group: 5-100

Cost: \$4 per person

See a Hoosier Homestead farm incorporating agritourism as a means to keep the family farm operating profitably. Tour this produce farm with a retail outlet offering in-season produce. Experience the Fall Harvest Festival and take a narrated tour-guided hayride through the farm fields. See interpretive displays on the festival grounds and hands-on activities involving grains, farm animals and farm equipment. This is a "Farm in the City" operating inside Indianapolis city limits while exemplifying Indiana farming tradition as it is adapting to the ever-changing urban environment.

White Violet Center for Eco-Justice

www.whiteviolet.org

812-535-2935

Saint Mary-of-the-Woods, Ind.

Travel time from Convention Center: 1 hour, 30 minutes

Open: Oct. 20-24, 9 a.m. - 6 p.m.

Group: 5-50

Cost: \$3 per person

White Violet Center for Eco-Justice, a ministry of the Sisters of Providence at St. Mary of the Woods, is home to 350 acres of state-certified organic cropland, five and a half acres of organic vegetable and fruit production and a herd of prize-winning alpacas. Learn about fiber production, sustainable agriculture and more. Specialized tours may be available upon request.

Wolf Park

www.wolfpark.org

765-567-2265

Battle Ground, Ind.

Travel time from Convention Center: 1 hour, 20 minutes

Open: Oct. 21-24, 9 a.m. - 5 p.m. (tours given at 9 a.m., 10:30 a.m., Noon, 1:30 p.m., and 3 p.m.). Public tours, Oct. 25-26, 1 - 5 p.m. Howl Nights, Oct. 24-25, 7:30 p.m.

Groups: Unlimited

Cost: \$5 per person

Visit and view socialized gray wolves in a semi-natural setting and learn about their behavior and ecology. Also see and learn about our coyotes, foxes and bison.

National FFA Offices Tours

While in Indianapolis, be sure to stop by the National FFA Center and National FFA Merchandise Center for a tour.

National FFA Center Tour

Items of interest include the FFA gardens, the past national officer gallery, Dr. Larry Case's office and FFA memorabilia.

National FFA Merchandise Center Tour

Located within a few miles of the National FFA Center and built as the home of the FFA Supply Service, the merchandise center allows a glimpse into behind-the-scenes operations, including the engraving of plaques and awards. Visit convention.ffa.org for driving directions and additional tour information.

Shuttle to the FFA Center Tours

Looking to avoid the hassle of directions and parking? A round-trip shuttle will run from the Indiana Convention Center to both FFA center locations for only \$10 per person. The shuttle will run on Wednesday to both locations and Thursday and Friday to the FFA center only. Shuttle times and tickets are only available through online convention registration. Note: You are more than welcome to drive yourself to either location during tour times.

Tour Times for the National FFA Center:

Monday, Oct. 20

1 - 4 p.m.

Oct. 21 - 24

9 a.m. - 4 p.m.

Saturday, Oct. 25

9 a.m. - Noon

Tour Times for the National FFA Merchandise Center:

Wednesday, Oct. 22

9 a.m. - 4 p.m.



CDE Tours

Career Development Events (CDE) Tours

Get an up-close look at CDEs with a walking tour! You can enjoy tours of agricultural mechanics, agronomy, dairy cattle evaluation, dairy foods, floriculture, food science and technology, livestock evaluation, nursery/landscape and poultry evaluation. Tours start in the lobby of the West Pavilion located at the Indiana State Fairgrounds at 9 a.m. and run every 20 minutes until Noon on Thursday, Oct 23. CDE tour guides will provide information regarding each

event. No reservations are required and sign-up is available at the CDE Tour Registration Desk in the West Pavilion lobby at the Indiana State Fairgrounds. Free shuttle buses will run between Indiana Convention Center and the Indiana State Fairgrounds. For more info go to page 43. A convention badge or pass is required to ride the shuttle bus. Many CDEs, which are not featured on the tour, can be viewed according to schedules posted below. These include agricultural communications, agricultural issues forum, creed speaking, extemporaneous public speaking, marketing plan, parliamentary procedure and prepared public speaking.

The following schedule lists public viewing opportunities for CDEs. Seating is limited at the discretion of the event superintendent. Participating teams should refer to your team orientation packet for a complete schedule.

Agricultural Communications Team Activity Finals

University Place – Auditorium
Thursday, Oct. 23, 2:30 - 5 p.m.

Agricultural Issues Forum Preliminaries

Westin Hotel – Capitol I, II, III, Cabinet, Caucus, Chamber, and Cameral rooms
Wednesday, Oct. 22, 1 - 6 p.m.

Agricultural Issues Forum Semi Finals

Westin Hotel – Capitol I, II, III, and Council rooms
Thursday, Oct. 23, 9 - 11:30 a.m.

Agricultural Issues Forum Finals

ICC – Sagamore Ballroom 3 – 5
Thursday, Oct. 23, 1:30 - 3:30 p.m.

Creed Speaking Preliminary I and II

Marriott Hotel – Texas, Michigan, Illinois and Florida rooms
Thursday, Oct. 23, 8:30 a.m. - 1:30 p.m.

Creed Speaking Semi Finals

Marriott Hotel – Florida and Texas rooms
Thursday, Oct. 23, 1:30 - 5:30 p.m.

Creed Speaking Finals

ICC – Sagamore Ballroom 3 – 5
Friday, Oct. 24, 11 a.m. - Noon

Extemporaneous Public Speaking Preliminaries

Westin Hotel – Senate I-III and Grand Ballroom I
Wednesday, Oct. 22, 8:30 a.m. - 1 p.m.

Extemporaneous Public Speaking Semi Finals

Westin Hotel – Grand Ballroom I and III
Wednesday, Oct. 22, 1 - 4 p.m.

Extemporaneous Speaking Finals

ICC – Sagamore Ballroom 3 – 5
Thursday, Oct. 23, 11 a.m. - 12:30 p.m.

Marketing Plan Preliminary and Semi Finals

Embassy Suites Hotel – Ambassador II and Chancellor II and Coronation I, II
Thursday, Oct. 23, 7:30 a.m. - 5 p.m.

Marketing Plan Finals

ICC – Sagamore Ballroom 3 – 5
Friday, Oct. 24, 8:30 - 10:30 a.m.

Parliamentary Procedure Preliminaries

Hyatt Hotel – Regency Ballroom A – D
Thursday, Oct. 23, 8 a.m. - 5 p.m.

Parliamentary Procedure Semi Finals

Hyatt Hotel – Regency Ballroom A – D
Friday, Oct. 24, 8 a.m. - Noon

Parliamentary Procedure Finals

ICC – Sagamore Ballroom 3 – 5
Friday, Oct. 24, 1 - 3 p.m.

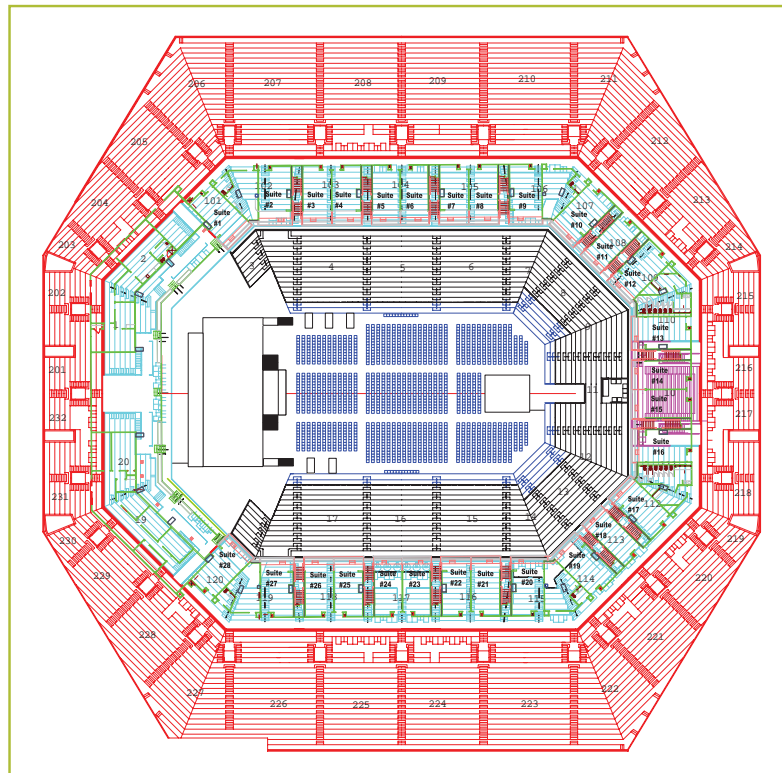
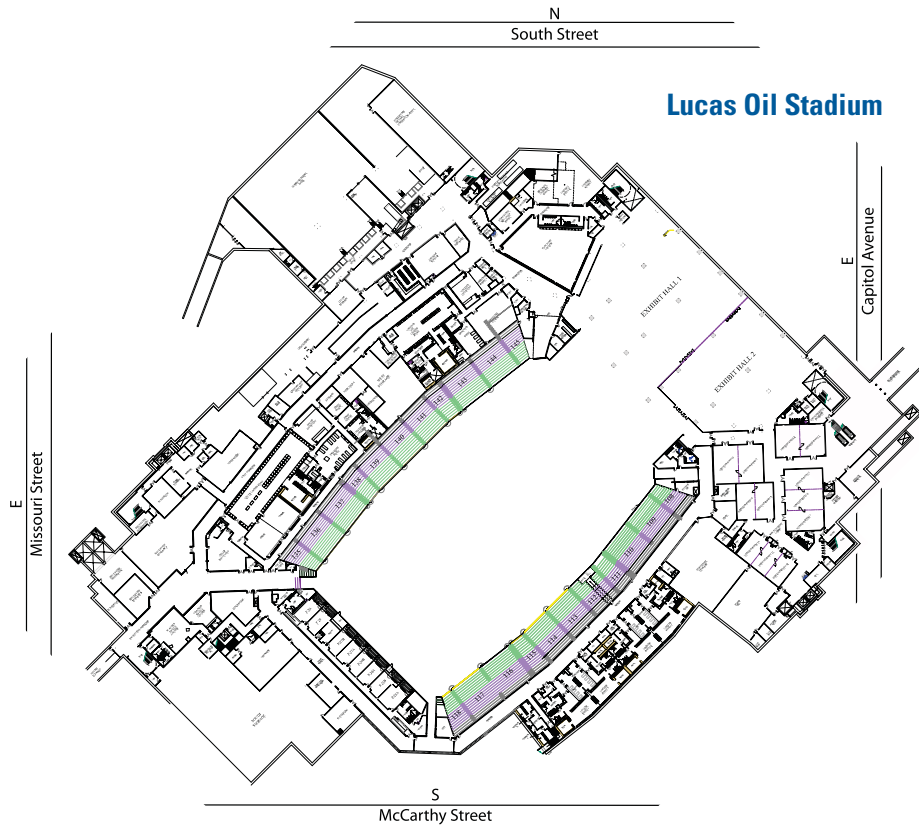
Prepared Public Speaking Preliminaries and Semi Final

Marriott Hotel – Texas, Michigan, Illinois and Florida rooms
Wednesday, Oct. 22, 7 a.m. - 5:30 p.m.

Prepared Public Speaking Finals

ICC – Sagamore Ballroom 3 – 5
Thursday, Oct. 23, 9 - 10:30 a.m.





Conesco Fieldhouse Convention Seating

October 22-25 2008 • Convention.ffa.org



81st National FFA Convention • Advisor's Planning Guide



Event Schedule

This schedule is subject to change. Not all events are open to public viewing. Participating CDE teams must reference their team orientation packet for a complete schedule of events.

FFA National Agriculture Career Show, ICC, LOS

Wednesday, Oct. 22 12:30 - 6 p.m.
Thursday, Oct. 23 8 a.m. - 5 p.m. NEW HOURS!
Friday, Oct. 24 8 a.m. - 4 p.m. NEW HOURS!

FFA Shopping Mall, ICC

Wednesday, Oct. 22 8 a.m. - 6 p.m.
Thursday, Oct. 23 8 a.m. - 6 p.m.
Friday, Oct. 24 8 a.m. - 6 p.m.
Saturday, Oct. 25 8 a.m. - Noon

FFA Food Court, LOS

Wednesday, Oct. 22 12:30 - 6 p.m.
Thursday, Oct. 23 8 a.m. - 5 p.m.
Friday, Oct. 24 8 a.m. - 4 p.m.

Wednesday, Oct. 22

6:30 - 8:30 a.m. PALS Recognition Breakfast, ICC, Room 109, 110
7:30 a.m. Prepared Public Speaking CDE, Marriott
7:30 a.m. Extemporaneous Public Speaking CDE, Westin
8 - 9 a.m. Delegate Public Hearings, ICC; Rooms 105 - 108, 120 - 124

8 a.m. - 5 p.m. CDE Team Photos (Individual schedules vary)
8 a.m. - 5 p.m. Agriscience Fair Set-up, LOS
8 a.m. - 5 p.m. Agriscience Student Finalists Set-up, ICC, Career Show
8:30 a.m. Agricultural Sales CDE, Marriott
8:30 - 10 a.m. PALS Advanced Workshop, ICC, Rooms 101 - 102
9 - a.m. PALS Beginning Workshop, ICC, Rooms 103 - 104
9:30 a.m. Environmental/Natural Resources CDE, ISF, Blue Ribbon Pavilion

9:30 a.m. - 3:30 p.m. Delegate Business Session I, ICC, Sagamore Ballroom 3, 4, 5

11 a.m. Agricultural Issues Forum CDE, Westin
11:30 a.m. Horse Evaluation CDE, ISF, Exposition Hall
11:30 a.m. - 1 p.m. Delegate Luncheon, ICC, Wabash 1, 2, 3
Noon Agricultural Mechanics CDE, ISF, Champions Pavilion
12:30 p.m. Farm Business Management CDE, Union Station
12:30 - 6 p.m. Interactive Classroom, ICC, Career Show
12:30 - 5:30 p.m. National Chapter Selection, LOS Meeting Rooms 10 - 12

1 p.m. Food Science and Technology CDE, ISF, Blue Ribbon Pavilion

1 p.m. Agronomy CDE, ISF, Pioneer Our Land Pavilion
1 p.m. Job Interview CDE, Crowne Plaza
1 p.m. Forestry CDE, Hyatt
1:15 - 3:15 p.m. Delegate Informational Sessions, ICC
1:30 p.m. Agricultural Communications CDE, University Place, IUPUI

1:30 p.m. Nursery/Landscape CDE, ISF, Agriculture Horticulture Building

2 p.m. Livestock Evaluation CDE, ISF, West Pavilion
2:30 p.m. Poultry Evaluation CDE, ISF, Northwest Pavilion
2:30 - 5 p.m. Leadership and Career Development Workshops, ICC, Wabash 1 - 3, Rooms 121 - 124, 208, 209
2:45 p.m. FFA Grand March

3 p.m.
3 p.m.
3 p.m.
3:30 p.m.
4 p.m.
4 - 5:45 p.m.

5 p.m.
5:30 p.m.

6 - 7:30 p.m.
7:15 - 9 p.m.

6 - 7:30 p.m.
6 - 7:30 p.m.
6 - 8 p.m.

6:30 - 7 p.m.

7 - 9 p.m.

8 - 9:30 p.m.
9:30 - 11:30 p.m.

Thursday, Oct. 23

7 a.m.
7:30 a.m.
7:30 a.m.
7:45 a.m.
8 a.m.

8 - 10 a.m.

8 a.m.
8 a.m.

8 a.m.
8 a.m.
8 a.m.
8 a.m.

8 a.m.
8 a.m.

8 a.m.
8 a.m. - 5 p.m.
8:30 a.m.
8:30 a.m.
8:30 a.m.

8:30 a.m. - Noon
8:30 a.m. - 5 p.m.

Dairy Cattle Handlers Activity, ISF, West Pavilion
Parliamentary Procedure CDE, Hyatt, Ballroom A-D
Floriculture CDE, ISF, Agriculture Horticulture Building
Dairy Foods CDE, ISF, Blue Ribbon Pavilion
Dairy Cattle Evaluation CDE, ISF, West Pavilion
Opening Session 1A, CF **Keynote:** Dana Hee, National Officer Reflections, National Advisor's Challenge, Band and Chorus Grand Entry
Marketing Plan CDE, Embassy Suites, Coronation I, II
Meats Evaluation and Technology CDE, Hyatt, Cosmopolitan Ballroom A-B
H.O. Sargent Diversity Award Dinner, Westin, Senate I - II
Opening Session 1B, CF **Keynote:** Dana Hee, National Officer Reflections, National Advisor's Challenge, Band and Chorus Grand Entry
National Chapter Awards Dinner, Marriott, Ballroom Salon I-VI
Hypnotists Show, ICC, Sagamore Ballroom 3, 4, 5
Extemporaneous/Prepared Public Speaking CDE Awards Dinner, Marriott, Ballroom VII-X
National Proficiency Finalists Reception, Westin, Grand Ballroom IV
National Proficiency Finalists Orientation Meeting, Westin, Grand Ballroom IV-V
Hypnotist Show, ICC, Sagamore Ballroom 3, 4, 5
Concert, LOS

Job Interview CDE, Crowne Plaza
Marketing Plan CDE, Embassy Suites
Parliamentary Procedure CDE, Hyatt
Poultry Evaluation CDE, ISF, Northwest Pavilion
Prepared Public Speaking CDE Holding & Finals, ICC, Finals Hall
Opening Session 1C, CF **Keynote:** Dana Hee, National Officer Reflections, National Advisor's Challenge, FFA Alumni Greetings, Band and Chorus Grand Entry
Livestock Evaluation CDE, ISF, West Pavilion
Agricultural Communications CDE, IUPUI, University Place, Auditorium
Agronomy CDE, ISF, Pioneer Our Land Pavilion
Dairy Cattle Handlers' Activity, ISF, West Pavilion
Dairy Foods CDE, ISF, Blue Ribbon Pavilion
Farm Business Management CDE, Crowne Plaza, Illinois Street Ballroom
Floriculture CDE, ISF, Agriculture Horticulture Building
Food Science and Technology CDE, ISF, Blue Ribbon Pavilion
Forestry CDE, Fort Benjamin Harrison, Indianapolis (Bus leaves ICC at 7:45 a.m.)
Horse Evaluation CDE, ISF, West Pavilion
Agriscience Fair Judging, LOS
Creed Speaking CDE, Marriott
Dairy Cattle Evaluation CDE, ISF, West Pavilion
Environmental/Natural Resources CDE, Purdue University (Bus leaves ICC at 6:30 a.m.)
H.O. Sargent Award Selection, LOS, Room 10
Leadership and Career Development Workshops, ICC, Wabash 1 - 3, Rooms 121 - 124, 208, 209





Event Schedule

8 a.m.	Agricultural Issues Forum CDE Semi Finals, Westin, Capitol I, II	9:30 a.m. - Noon	FFA Alumni Business Session, ICC, Room 205, 206, 207
9 a.m.	Agricultural Mechanics CDE, ISF, Champions Pavilion	10:30 - 11:30 a.m.	Distinguished Service Citation/ VIP/ Honorary American Degree Reception, Omni
9 a.m.	Meats Evaluation and Technology CDE, University of Illinois, Champaign (Bus leaves ICC at 7 a.m.)	11 a.m.	Agricultural Sales CDE Award Luncheon, Marriott, Indiana Ballroom E, F, G
9 a.m.	Nursery/Landscape CDE, ISF, Agriculture Horticulture Building	11:15 a.m.	Creed Speaking CDE Holding & Finals, ICC, Finals Hall
9:30 a.m.	Agricultural Sales CDE, Marriott, Indiana Ballroom	11:30 a.m. - 1 p.m.	Agriscience Awards Luncheon, Westin
10 a.m.	Extemporaneous Public Speaking CDE, Holding & Finals, ICC, Sagamore Ballroom 3, 4, 5	Noon - 1:30 p.m.	Fifth Session, CF Retiring Address: Tyler Tenbarge, Officer Advisor and School Recognition, H.O. Sargent Awards, NAAE Greetings, National Officer Candidate Introductions, Agri-Entrepreneurship Awards
10 - 11:30 a.m.	National Proficiency Finalist Photo Session, Westin, Grand Ballroom IV, V	Noon - 2 p.m.	Awards Luncheons; Farm Business Management, Nursery/Landscape, Agricultural Issues, Agronomy, Dairy Cattle Evaluation/Handlers, Various Locations
10:30 - 12:30 p.m.	Delegate Session II, CF	12:30 p.m.	Parliamentary Procedure CDE Holding & Finals, ICC, Finals Hall
11:30 a.m. - Noon	Stars Over America Reception, Sheraton	2 - 3:30 p.m.	Hypnotist Show, ICC, Rooms 205, 206, 207
Noon - 1:30 p.m.	National Proficiency Finalists Award Luncheon, Marriott, Ballroom I-X	3 - 4:30 p.m.	Sixth Session, CF Proficiency Awards
Noon - 1:30 p.m.	Stars Over America Luncheon, Sheraton	4 - 5:30 p.m.	Hypnotist Show, ICC, Room 205, 206, 207
1 p.m.	Agricultural Issues Forum CDE Holding & Finals, ICC, Finals Hall	4:30 - 6:30 p.m.	Xtreme Bulls Season Finale, ISF, Pepsi Coliseum
1 - 5:30 p.m.	Agriscience Student Finals, LOS Rooms 11 - 12	4:30 - 7 p.m.	National Leadership Dinner/WLC Reunion, Westin, Grand Ballroom IV, V
1:30 - 5 p.m.	National Proficiency Finals and Stars Award Judging, Hyatt, ICC, Sheraton and Westin	5:45 - 6:30 p.m.	National FFA Band and Chorus Concert, CF
2 - 4:30 p.m.	Second Session, CF Retiring Address: Becky Sullivan, State Association Membership Awards, Models of Innovation Awards, National Chapter Awards	6 - 7:30 p.m.	Hypnotist Show, ICC, Rooms 205, 206, 207
4 - 6 p.m.	FFA Alumni Awards Session, ICC, Room 205, 206, 207	6 - 7:30 p.m.	Awards Dinners; Parliamentary Procedure, Floriculture, Livestock Evaluation, Forestry, Marketing Plan, Agricultural Communications, Poultry Evaluation, Meats Evaluation & Technology, Various Locations
5:15 p.m.	National FFA Talent Revue, CF	7 - 9 p.m.	Seventh Session, CF Keynote: Michael Peterson, Retiring Address: Brady Revels, Creed, Extemporaneous and Prepared Public Speaking CDE Awards; Agriscience Student and Teacher Recognition; Agriscience Fair Finalists
6 p.m.	Creed Speaking CDE Awards Dinner, Marriott, Ballroom VII-X	7 - 9 p.m.	American Degree Reception, ICC, Sagamore Ballroom
6 - 7:30 p.m.	Hypnotist Show, ICC, Sagamore Ballroom 3, 4, 5	8 - 9:30 p.m.	Hypnotist Show, ICC, Rooms 205, 206, 207
6:30 - 8:30 p.m.	Bulls and Broncs, Season Finale, ISF Pepsi Coliseum	8:30 - 10:30 p.m.	Xtreme Bulls, Season Finale ISF, Pepsi Coliseum
7:30 - 10 p.m.	Third Session, CF Keynote: Tom Zupancic, Retiring Address: Kari Boettcher; Sponsor Recognition, Million Hour Challenge	Saturday, Oct. 25	
8 - 9:30 p.m.	Hypnotist Show, ICC, Sagamore Ballroom 3, 4, 5	7:45 - 11:30 a.m.	Eighth Session, Stars Over America and American Degree Ceremony, LOS
8 p.m. - 12 a.m.	Collegiate House Party, NCAA Hall of Champions (shuttle will pick up at Hilton)	8:30 - 10:30 a.m.	CDE Award Breakfasts: Dairy Foods, Food Science and Technology, Environmental/Natural Resources, Various Locations
9:30 - 11:30 p.m.	Concert, LOS	8:30 a.m. - Noon	Leadership and Career Development Workshops, ICC, Wabash 1 - 3, Rooms 121 - 124, 208, 209
10 - 11:30 p.m.	Hypnotist Show, ICC, Sagamore Ballroom 3, 4, 5	9 a.m. - 1 p.m.	Collegiate Career Expo, ICC, Rooms 101 - 106
Friday, Oct. 24		1:30 p.m.	Final Delegate Session/Committee Reports, CF
7 - 9 a.m.	Agri-Entrepreneurship Awards Breakfast, Westin, Capitol I	1:30 p.m.	Election and Installation of 2008 - 2009 National Officers, CF
7:30 a.m.	Parliamentary Procedure CDE Semi-Finals, Hyatt, Regency Ballroom	1:30 - 5 p.m.	Ninth Session, CF, Keynote: Fred McClure, Retiring Address: Zach Kinne, National Officer Parent Recognition, Career Development Event Winners, Delegate Reports, Past National Officer Recognition, Election and Installation of 2008 - 2009 National FFA Officers, Convention-in-Review Show
8 a.m.	Marketing Plan CDE Holding & Finals, ICC, Finals Hall		
8 - 10:30 a.m.	Fourth Session, CF Keynote: Mark Scharenbroich, Retiring Address: Morgan Parker; DSC and VIP Citations, Honorary Degree Ceremony		
8:30 a.m. - 5 p.m.	Leadership and Career Development Workshops, ICC, Wabash 1 - 3, Rooms 121 - 124, 208, 209		
8:30 a.m.	Horse Evaluation CDE Awards Breakfast, Marriott		
8:30 a.m.	Job Interview CDE Awards Breakfast, Crowne Plaza		
8:30 a.m.	Agricultural Mechanics CDE Award Breakfast, Marriott		
9 a.m. - Noon	Agriscience Teacher of the Year Selection, LOS, Rooms 11 - 12		
9 a.m. - Noon	Interactive Classrooms, ICC, Career Show		

Legend

CF= Conesco Fieldhouse
ICC= Indiana Convention Center

ISF= Indiana State Fairgrounds
LOS= Lucas Oil Stadium





Concerts

Step Up Stand Out Concert Series Two Concerts, Two Nights, Too Good.

Presented by:



CHEVY

Wednesday, Oct. 22 - Lucas Oil Stadium

Showtime: 9:30 p.m.

Ticket price: \$25

Taylor Swift

CMA Award Winning and
Grammy-nominated
Best New Artist

with

James Otto

"The Biggest Voice in
Country Music"



Thursday, Oct. 23 - Lucas Oil Stadium

Showtime: 9:30 p.m.

Ticket price: \$15

Michael Peterson

Multiple Grammy and CMA
award nominee

with

Living Illusions



Bulls and Broncs Championship

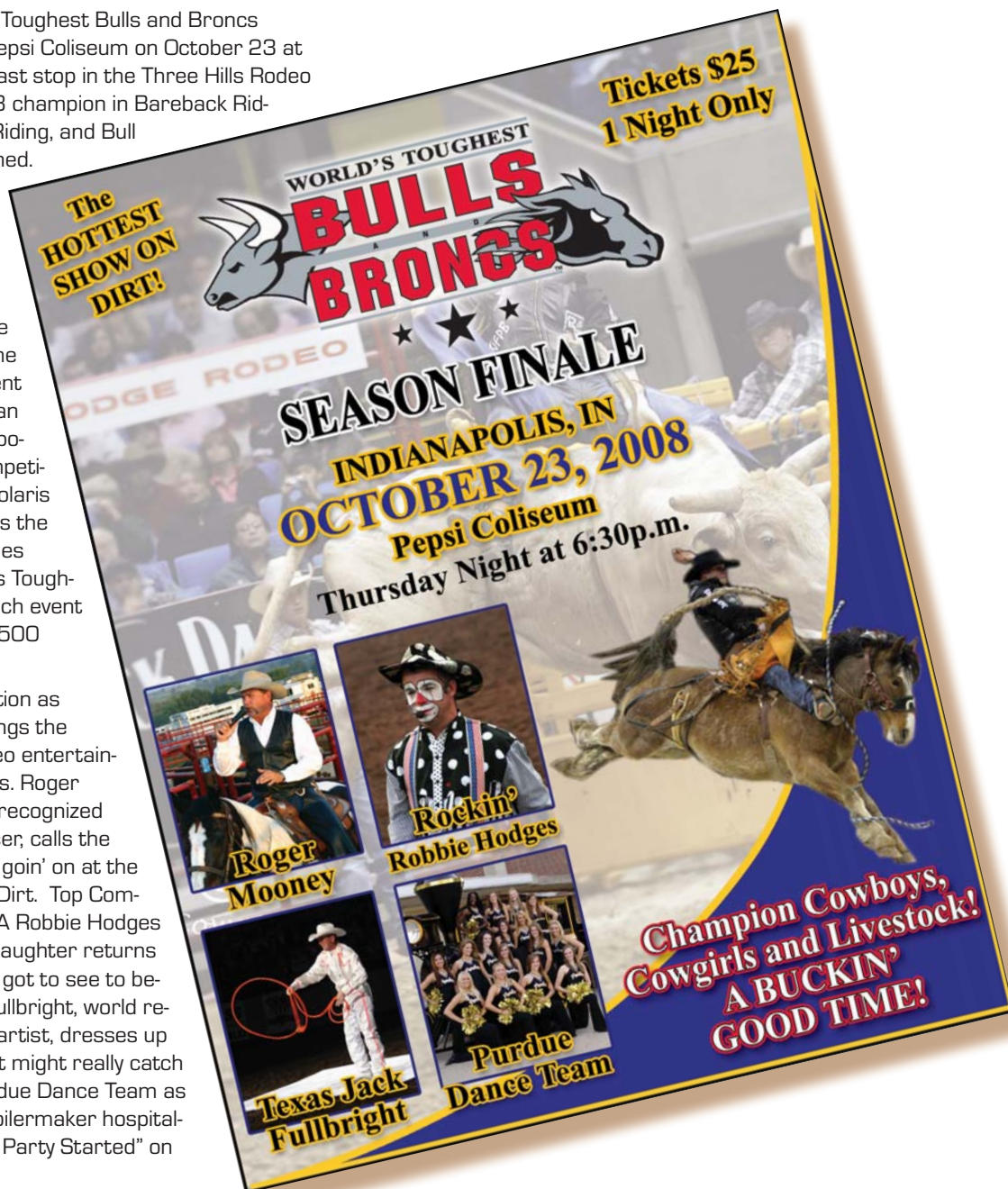
The 2008 World's Toughest Bulls and Broncs Finale returns to Pepsi Coliseum on October 23 at 6:30 p.m. It's the last stop in the Three Hills Rodeo Series as the 2008 champion in Bareback Riding, Saddle Bronc Riding, and Bull Riding will be crowned.

The head to head challenge of the top 12 in each event will be followed by the featured "Show me the Money" round as the top two in each event battle it out to win an additional \$2,000 bonus. If smokin' competition isn't enough, Polaris has cranked it up as the "Hard to Beat" Series crowns the World's Toughest Champion in each event with a new Polaris 500 Sportsman.

Its action and reaction as Three Hills also brings the A-Team in Pro Rodeo entertainment to Indianapolis. Roger Mooney, nationally recognized Pro-rodeo announcer, calls the action and keeps it goin' on at the Greatest Show on Dirt. Top Comedy Act of the PRCA Robbie Hodges and the master of laughter returns doing things you've got to see to believe. Texas Jack Fullbright, world renowned trick rope artist, dresses up the show. But what might really catch your eye is the Purdue Dance Team as they show some Boilermaker hospitality as they "Get the Party Started" on Thursday night.

The big guns of Three Hills will come to town to test the cowboy's skills. You can see them live at the World's Toughest Bulls and Broncs Finale; Migraine, featured on PBR tour, with Mama

Mia, Super Jet, Strawberry Shake, Special K to name a few. Its one show only...get your tickets now to witness the Thrills and Spills of Three Hills at the World's Toughest Bulls and Broncs Finale.





ESPN Xtreme Bulls

The Pepsi Coliseum will be the site of plenty of rides and wrecks on Friday, Oct. 24 when the 2008 Dodge Xtreme Bulls Tour returns to the national FFA convention in Indianapolis. The Xtreme Bulls tour will once again have two shows on Friday night. Xtreme Bulls is sanctioned by the largest Pro Rodeo organization in the world, the Professional Rodeo Cowboys Association and is televised exclusively on ESPN Networks.

Forty of the world's top bull riders will converge at the Pepsi Coliseum to take their shot at the \$85,000 purse. Several world champions—including the 2007 world champion Wesley Silcox; 2006 world champion B. J. Schumacher; 2000 world champion Cody Hancock and current PRCA bull riding star, Chance Smart—will compete in the event.

Also performing will be the baddest, meanest, rankest one-ton athletes in the world...the Xtreme bulls. These bulls have thrown cowboys at the Wrangler National Finals Rodeo in Las Vegas, Houston, San Antonio, Reno and many points in between.

The FFA Special Edition/Tour Finale will be broadcast on ESPN and ESPN2 with eight-time PRCA world champion bull rider Donnie Gay handling the color commentary. ESPN Network coverage reaches 93 million households, providing tremendous exposure for the National FFA Organization. Bring your signs, support your favorite bull rider and get on TV.

DODGE

XTREME BULLS

PRESENTED BY

B & W TRAILER HITCHES

FFA SPECIAL EDITIONS

**PEPSI COLISEUM
INDIANA STATE
FAIRGROUNDS
OCTOBER 24
4:30PM & 8:30PM**

**Top 40
bull riders
including**

- WESLEY SILCOX
- B. J. SCHUMACHER
- CODY HANCOCK
- KARIN ASAY

**vs. 40 of
the rankest bulls.**

ESPN

**TICKETS FOR BOTH PERFORMANCES
AVAILABLE THROUGH CONVENTION REGISTRATION**

FFA



Hypnotists and Band, Chorus & Talent

Hypnotists

Sponsored by the National FFA Alumni Association



During the national FFA convention, FFA members will learn that leadership is influence; watch the hypnotists exert a different brand of influence over fellow members and advisors. Volunteer participants may find themselves "getting very sleepy," but the audience won't!

Wednesday, Oct. 22

6 and 8 p.m.
ICC, Sagamore
Ballroom 3,4,5

Thursday, Oct. 23

8 and 10 p.m.
ICC, Sagamore Ballroom
3,4,5

Friday, Oct. 24

2 and 4 p.m.
ICC, Rooms 205 - 207



Jim Wand

Thursday, Oct. 23

6 p.m.
ICC, Sagamore Ballroom
3,4,5

Friday, Oct. 24

6 and 8 p.m.
ICC, Rooms 205 - 207



Dr. Al Snyder



National FFA Band, Chorus, and Talent

Come see your 2008 National FFA Band, Chorus and Talent perform at these special locations.

Special Concerts

Tuesday, Oct. 21

- 11 a.m. - 12:30 p.m. National FFA Band, Indianapolis Artsgarden
- Noon - 1 p.m. National FFA Talent, Indianapolis City Market

Wednesday, Oct. 22

- Noon - 1 p.m. National FFA Talent, Indianapolis Artsgarden
- Noon - 1 p.m. National FFA Chorus, Indianapolis City Market
- 2:45 - 3 p.m. National FFA Band and Chorus Procession down FFA Way to Conesco Fieldhouse for opening session.

Thursday, Oct. 23

- 11:30 a.m. - 12:30 p.m. National FFA Chorus, Indianapolis Artsgarden
- 11:30 a.m. - 12:30 p.m. National FFA Band, Indianapolis City Market
- 2 - 3 p.m. National FFA Chorus, Indianapolis Artsgarden
- 2 - 3 p.m. National FFA Talent, Indianapolis City Market
- 5:15 - 6:30 p.m. National FFA Talent Revue, Conesco Fieldhouse

Friday, Oct. 24

- 11 a.m. - Noon National FFA Band, Monument Circle
- 2 - 2:30 p.m. National FFA Chorus, Monument Circle
- 5:45 - 6:30 p.m. National FFA Band and Chorus Concert, Conesco Fieldhouse

All times, performers and locations subject to change



Food and Shopping

Food

Lucas Oil Stadium Food Court Concessions

Hours of Operation

Wednesday, Oct. 22	12:30 - 6 p.m.
Thursday, Oct. 23	8 a.m. - 5 p.m.
Friday, Oct. 24	8 a.m. - 4 p.m.

- Breakfast – scrambled eggs/potatoes/breakfast meat
- Chicken tenders
- Nachos
- Pork tenderloin
- Hamburgers/hot dogs/bratwurst
- Popcorn/candy
- Pizza
- Ice cream

And more!

Additional Food Court Areas Downtown:

- Hyatt Regency Indianapolis
- City Market - www.indianapoliscitymarket.com
- Circle Centre Mall

Dining Dollars certificates for the Circle Centre Mall food court can be purchased for \$8 each in groups of 10 or more. Certificates are good for lunch or dinner at Circle Centre's participating food court vendors. Menus are printed on the reverse of the certificates. No substitutions please. Allow up to 5 business days for the processing of your order in addition to shipping time. Orders will not be processed without prepayment. Please call 317-681-5615 or e-mail h davidson@simon.com for an order form.

Shopping Mall

Exhibit Halls A and B, Indiana Convention Center
An Exhibit Hall pass or registration badge is required to enter.

Hours of Operation

Wednesday, Oct. 22	8 a.m. - 6 p.m.
Thursday, Oct. 23	8 a.m. - 6 p.m.
Friday, Oct. 24	8 a.m. - 6 pm.
Saturday, Oct. 25	8 a.m. - Noon

Visit the FFA shopping mall for great convention souvenirs

The mall features non-FFA merchandise from more than 30 stores including John Deere, Cowpokes, MainGate, Souvenir Shirts, Tractor Supply Company, and more! Be sure to check out the FFA Sale Store for great deals on FFA merchandise. Also, don't miss the FFA Mega Store, a one-stop shop for all your FFA needs: official dress, chapter supplies, certificates, jewelry, T-shirts, hats, sweatshirts, games, posters, books, buttons, decals, toys, gift items, and more!



Shoplifting

National FFA staff will deal directly with occasional instances of shoplifting at the FFA Shopping Mall, up to and including prosecution. In downtown Indy, Circle Centre Mall, is located in the midst of all the convention activities, and offers an amazing variety of goods and services. Circle Centre Mall employs its own security force, and shoplifters will be prosecuted.





Maps and Directions





Parking

1. Prepaid parking passes for all vehicles (except trailers) are available through registration. Passes will provide a parking space in the same lot or garage with in and out privileges for the entire convention and cost \$30-75.

2. Participants staying in downtown hotels will have the option to use hotel parking for their vehicles. Contact your hotel to make arrangements. The majority of downtown hotels do not accommodate buses. Please plan accordingly. At this time, parking costs for downtown hotels are \$18-25 per day.

3. Open parking in the downtown area is available on a first come first served basis. Costs range from \$5-25 per entry with no in and out privileges. Please note that access to these spaces is not guaranteed. For a complete listing of all parking available in downtown Indianapolis, please visit www.indydt.com/parkingdatabase.html.

4. Trailer parking will be in the Fern Marshalling yard. To obtain directions and parking passes for trailers, please contact Jim Armbruster; jarmbruster@ffa.org.

5. For specific parking pass information please refer to online registration

or the registration form in the back of this publication. For descriptions, maps and driving directions of parking facilities, visit the convention website at www.ffa.org.

Fairgrounds Driving Directions

The Indiana State Fairgrounds (ISF) is located on the corner of East 38th Street and Fall Creek Parkway in Indianapolis. The address for ISF is 1202 E. 38th St., Indianapolis.

I-65 North (from Louisville, Ky. Columbus, Ind.)

Take I-65 North to I-70 East to Keystone Avenue (exit #85B). Take Keystone Avenue north to 38th Street. Turn left (west) on 38th Street.

I-65 South (from Chicago, Ill. Lafayette, Ind.)

Take I-65 South to the 38th Street exit. Continue east to the fairgrounds entrance.

I-70 East (from St. Louis, Mo. Terre Haute, Ind.)

Take I-70 East to Keystone Avenue (exit #85B). Take Keystone Avenue north to 38th Street. Turn left (west) on 38th Street.

I-70 West (from Columbus, Ohio Richmond, Ind.)

Take I-70 West to Keystone Avenue (exit #85B). Take Keystone Avenue north to 38th Street. Turn left (west) on 38th Street.

I-69 South (from Detroit, Mich. Fort Wayne, Ind.)

I-69 South becomes Binford Boulevard (SR37), which becomes Fall Creek Parkway. The Fairgrounds is located just north of 38th Street on Fall Creek Parkway.

I-74 West (from Cincinnati, Ohio)

Take I-74 West to I-465 North. Take I-465 North to I-70 West to Keystone Avenue (exit #85B). Take Keystone Avenue north to 38th Street. Turn left (west) on 38th Street.

From Indianapolis International Airport

Take the Sam Jones Expressway (formerly known as Airport Expressway) to

I-70 East to Keystone Avenue (exit #85B). Take Keystone Avenue north to 38th Street. Turn left (west) on 38th Street and continue to fairgrounds entrance.

From Downtown Indianapolis

Take Illinois or Meridian Street north to 38th Street. Turn right on 38th Street. The Indiana State Fairgrounds will be located on your left at the corner of 38th Street and Fall Creek Parkway. Enter the fairgrounds by turning left off of 38th Street into the 38th Street gate.

Parking at Indiana State Fairgrounds

Parking at the fairgrounds will be complimentary Tuesday, Oct. 21 to Friday, Oct. 24 during the national FFA convention. Convention participants attending the career development events or the Xtreme Bulls event will need to follow directions of parking attendants.

Please Note:

Bus parking lots will not allow vans, automobiles or pick-up truck parking.

Parking facilities for these vehicles will not accommodate mini, charter or school buses.





IndyGo Services

IndyGo has 29 fixed routes that move throughout the Indianapolis area. Coverage includes direct routes from downtown to all major shopping malls as well as many cultural destinations – examples include:

Indiana State Fairgrounds

– Routes 4 and 39 (39 is best)

IUPUI

– Red Line, 3, 10 and 37

The Red Line is a FREE circulator that moves from

the campus of IUPUI through the Downtown area, including stops at various attractions, parking garages and hotels.

Castleton Mall

– Route 19

Fashion Mall

– Route 18

Glendale Mall

– Routes 17 and 19

Washington Square Mall

– Route 8

Lafayette Square Mall

– Route 38

Children's Museum of Indianapolis

– Routes 4, 18, 28, 38, 39

Indianapolis Museum of Art

– Routes 34 and 38

Indianapolis Motor Speedway

– Route 25

National FFA Center

– Trader Point Shopping Mall – Route 37

Indianapolis International Airport

– Green Line, \$7 or \$15 with coupon from ffa.org

A special thanks to Toyota for providing the National FFA Organization courtesy vehicles to use during the 81st National FFA Convention.



Fixed Route is \$1.50 per ride or \$3.50 for a day pass

Youth ride for half price by presenting a valid Student ID (18 and younger)

IndyGo Red Line





Loading and Unloading Zones

Charter and Bus Load and Unload Zones

Indiana Convention Center

The National FFA Organization provides shuttles to key hotels and convention venues. These shuttles will load and unload on the south curb lane of Maryland Street between West and Capitol, on Capitol, between Maryland and the convention center plaza, and the northeast side of Lucas Oil Stadium. Only buses with proper passes may load or unload in these areas. Buses without proper passes will be ticketed or towed.

Parking will not be allowed in loading and unloading zones. Bus drivers must be present at all times. Unattended buses will be towed at owner's expense. Drivers are expected to cooperate with and follow direction of the police department or convention staff. In some cases, bus drivers may be asked to move their buses to ensure safety and security of all convention participants.

Chapters arriving by school bus or private charter can drop off and pick up at the locations listed below.

1. West curb lane of Capitol, between Washington and Maryland

2. South curb lane of Maryland, east of Capitol to mall parking entrance/Hyatt skywalk

3. West curb lane of Pennsylvania, between Maryland and Conseco Court

4. West curb lane of Delaware between the railroad overpass and Conseco Court

Indiana State Fairgrounds

Buses entering from 38th street gate 1A:

Buses will be directed to Main Street. Drop off points will be located east of the coliseum on the south curb lane of Main Street.

Buses entering from Fall Creek Parkway gate 6:

Drop off and pick up is north curb lane of Main Street, between gate 1 and the Champions Pavilion.

After unloading, all buses will be directed to parking locations or exit onto Fall Creek Parkway. After loading, all buses will exit onto Fall Creek Parkway.

Participants with Disabilities

Indiana Convention Center

Load and unload zone for participants with disabilities is on the west curb lane of Capitol between Washington and Maryland.

Conseco Fieldhouse

Load and unload zones for participants with disabilities are on Conseco Court, Delaware and Pennsylvania Streets. Conseco Court is an access street just north of Conseco Fieldhouse.

Indiana State Fairgrounds

Load and unload zone for participants with disabilities is in front of the West Pavilion. Drivers will need to notify parking attendants for access to this area.

Shuttle Service

Career Success Tour
Shuttle load and unload

zone is on Capitol, between Maryland and the convention center plaza.

CDE load and unload zone is on the northeast side of Lucas Oil Stadium, just east of Missouri and South.

National Days of Service will load and unload on the Indiana Convention Center tarmac, located off of Missouri Street on the west side of the building.

Hotel, Indiana State Fairgrounds, FFA Center, and volunteer shuttles will load and unload on Maryland, north of the Indiana Convention Center.





Shuttles

Key Hotel Shuttles

One-way shuttles from key hotels to the convention center will be provided free of charge. However, return passes must be purchased through registration. Weekly passes are \$25 and can be purchased during pre-registration. One time passes are \$5 and have to be purchased at the on-site registration. All riders returning to their hotel must have a pass.

Schedule

**Wednesday, Oct. 22,
8 a.m. - Midnight**

**Thursday, Oct. 23,
6 a.m. - Midnight**

**Friday, Oct. 24,
6 a.m. - 11 p.m.**

**Saturday, Oct 25,
6 a.m. - 6 p.m.**

- Shuttle riders need to be at a designated shuttle pick up point 10 minutes prior to departure time
- Shuttle will arrive at stop 1 on the hour to start the routes. Drive time between each stop is approximately 10 minutes.
- Shuttles depart the convention center to return to hotels on the hour.
- Please keep in mind that shuttle timing could be impacted by traffic and weather conditions.

Route Name	Pick up locations	Hotels in this Area	Schedule
Blue Route Northwest -Pyramid Campus	Stop 1: Holiday Inn North, main driveway Stop 2: Comfort Inn, west curb lane of Wesleyan by main drive entrance Stop 3: Embassy Suites main driveway Stop 4: Days Inn Stop 5: South curb lane of 92nd street between La Quinta and Best Western Country Inn Suites	Drury Inn, La Quinta Inn Northwest, Homewood Suites Northwest, Embassy Suites North, Days Inn & Suites Northwest, Holiday Inn North, Best Western Country Suites, Comfort Inn & Suites North at the Pyramids, Super 8 at the Pyramids	Approximate drive time to convention center is 35 minutes from last stop.
Tan Route North Campus - Keystone at the Crossing	Stop 1: West side of Sheraton, east curb lane of Keystone Crossing Rd. Stop 2: West end of Marriott North.	Sheraton Indianapolis Hotel & Suites, Indianapolis Marriott North and Hyatt Place Indianapolis Keystone	Approximate drive time to convention center is 45 minutes from last stop
Green Route East Campus	Stop 1: Main driveway of Holiday Inn East Stop 2: South side of Marriott Hotel just off Conference Center main doors Stop 3: Hampton Inn East	Holiday Inn East, La Quinta Inn East, Marriott Hotel and Conference Center, Fairfield Inn & Suites Indianapolis East, Quality Inn & Suites East, Comfort Inn East, Comfort Suites and Hampton Inn East	Approximate drive time to convention center is 25 minutes from last stop
Red Route Airport Campus	Adam's Mark doors on west end back of hotel	Adam's Mark	Thursday between 6:15 - 6:45 a.m., 5 motor coaches added for opening session. Approximate drive time to convention center is 30 minutes.
Orange Route Airport Campus	Stop 1: Hyatt Place on Bradbury Street (main driveway) Stop 2: Days Hotel, Airport Stop 3: Driveway between Ramada Indianapolis Airport and La Quinta Inn (Executive Drive) Stop 4: Courtyard by Marriott Stop 5: La Quinta (Lynhurst Drive) Stop 6: Quality Inn & Suites Airport (Lynhurst Drive)	Hyatt Place, Indianapolis Airport (formerly the AmeriSuites Airport), Quality Inn & Suites Airport, La Quinta Inn (Lynhurst Drive), Days Hotel Airport, La Quinta Inn (Executive Drive), Ramada Indianapolis Airport, Courtyard by Marriott Airport.	Approximate drive time to convention center is 30 minutes from last stop.
Gold Route Airport Campus	Stop 1: Radisson Airport just off of main entrance Stop 2: Holiday Inn Select, Airport at main entrance	Radisson Hotel Indianapolis Airport, Holiday Inn Select Airport	Approximate drive time to convention center is 30 minutes from last stop





Shuttles

Indiana State Fairgrounds Shuttles

A free shuttle between the Indiana Convention Center and the Indiana State Fairgrounds is provided for all registered convention participants. The ISF shuttle will run:

Wednesday, Oct. 22,
7 a.m. - 7 p.m.

Thursday, Oct. 23,
6 a.m. - 5 p.m.

Bulls and Broncs/ Xtreme Bulls Shuttles

Rodeo shuttle passes between the Indiana Convention Center and the Indiana State Fairgrounds are available for purchase through registration for \$10. These passes are valid for one round trip only. The rodeo shuttle will run:

Thursday, Oct 23,
5 - 10 p.m.

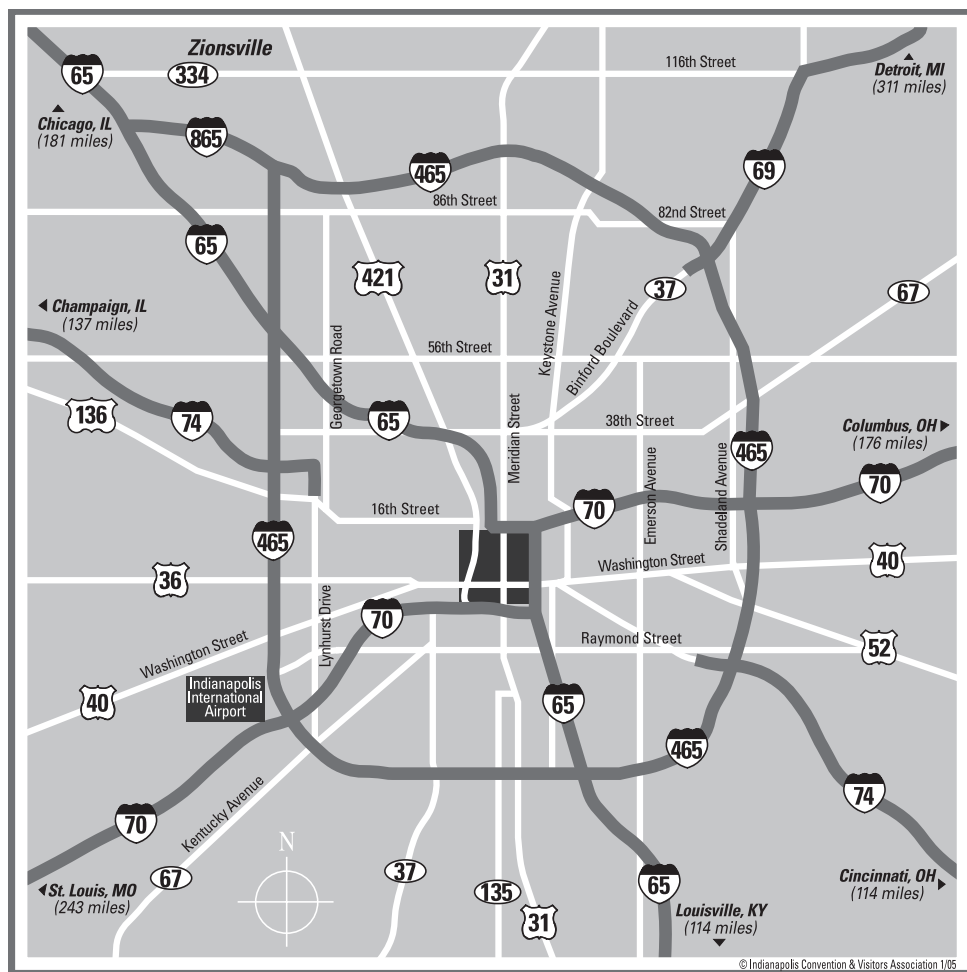
Friday, Oct. 24,
2:30 - 11:30 p.m.

Do You Need a Rental Car for the National FFA Convention?



We'll pick you up.

FFA is proud to announce that Enterprise Rent-A-Car will be providing a discounted rate for all attendees to the national FFA convention. Enterprise has a location on-site at the Indianapolis International Airport as well



as branches throughout the United States. If you are flying in or if you would like to drive in from your hometown, you may utilize the discounted FFA number to book your rental car. Please call 1-800-Rent-A-Car (1-800-736-8222) to book your vehicle. The FFA discount number is 08A5702. Be sure to reference this discount number when booking your

reservation so that you receive the discount. You may also book your rentals through www.enterprise.com. After you enter the discount number, 08A5702, you will be asked for your pin number, which is NAT. Due to the high volume of rentals Enterprise will be handling for the convention, please call to make your reservations no later than Sept. You may still

book your rental after Sept. however, availability may be limited.

*** NOTE ***

This discount number does NOT guarantee the lowest rate. Please compare prices of all car companies.





Planning and Registration





Housing

Housing

If you don't have hotel reservations for your chapter, there's still a little time, but your choices may be limited. Refer to the convention website on ffa.org for up-to-date housing information. Follow the steps below to secure your accommodations. The deadline for housing forms to be received by National FFA Convention Housing is Sept. 9.

Securing your Hotel Accommodations

Step 1

Log into MyFFA to view hotel options listed, and for the most up-to-date hotel information. Rank your choices in the "Hotel Preference" section of the housing request form. Should your choices not be available, be sure to answer whether "rate" or "location" is most important when an alternative option is assigned.

Step 2

Complete and send the housing form to the 2008 National FFA Convention Housing as soon as possible. You must include a \$50 non-refundable deposit per room with the housing form. Include your credit card information at the bottom of the form, enclose a school check, or an original, signed purchase order. Housing request forms without deposits will be returned.

Mail request forms to:
2008 National FFA Convention Housing
PO Box 7248
Indianapolis, IN 46207-7248

Step 3

A housing acknowledgement will be sent to you via e-mail, fax or U.S. mail, depending on the information you provide on the housing form. Once you have checked and verified your acknowledgement for accuracy, mail your rooming list along with your chapter name and number to the 2008 National FFA Convention Housing, P.O. Box 7248, Indianapolis, IN 46207-7248. Please bracket the names of persons who are to share rooms. Rooming lists are due Sept. 9.

Step 4

Contact the National FFA Convention Housing Bureau, 317-684-2573 (8 a.m. - 5 p.m. EDT, Monday through Friday), with questions.

Changing Your Reservations

If you have already been assigned rooms through the housing bureau and need to make changes to your assignment, please submit them in writing to

2008 National FFA Convention Housing
PO Box 7248
Indianapolis, IN 46207-7248
Fax: 317-684-2492

Changes cannot be made over the phone and will be accepted in writing by the National FFA Convention Housing Bureau through Sept. 20. After Sept. 24, contact your hotel directly. Cancellations made on or after Oct. 10 may result in forfeiture of deposit and additional charges of the first night room rate and tax by the hotel.

If you will be arriving after the reservation check-in day, please contact the hotel in advance to inform them of the change in arrival date. Not providing advanced notice to the hotel may result in forfeiture of deposit, a charge of one night's room and tax and loss of rooms.

An early departure fee of one night's room and tax may be charged to a guest who departs prior to the reserved check-out date. Guests wishing to avoid this fee must advise the hotel at or before check-in of any change in the scheduled length of stay. The hotel will inform the guest of this fee upon check-in, giving the guest the option to change the check-out date upon arrival without penalty.

Stay Safe in Your Hotel

Share these important tips with your students as you prepare them for their trip to Indianapolis.

- **Read the emergency instructions on the back of your hotel room door. Familiarize yourself with the fire escape route.**
- **Do not leave your door open and always use the dead bolt.**
- **Do not open your hotel door to anyone you don't personally know. Call the front desk to verify hotel staff, security guards and others requesting entrance to your room.**
- **If you encounter questionable individuals, report them to the front desk.**
- **Do not leave valuables out in the open. Many hotels provide lock boxes for your security.**





Planning and Registration

8 Steps to Convention Planning Success

With so many activities to choose from during the national FFA convention, it's a good idea to have a plan. Make the most of your chapter's time at convention by following these eight easy steps!

Step 1

Use the Convention Planning Grid on page 50, to schedule all essential activities, including any meetings, Career Development Events, award ceremonies or meal functions that require your attendance.

Step 2

Decide which sessions to attend and block out their times on the planning grid. Each convention session has a different theme (see pages 6-7); choose the ones that are most likely to appeal to your students' needs and interests. Don't forget, pre-session activities begin 30 minutes prior to each session.

Step 3

Schedule time for both you and your students to attend leadership and career success workshops. You'll all walk away with new information, new ideas and a renewed commitment to personal and professional success!

Step 4

Identify time for Career Success Tours of "must see" sites in and around Indianapolis. (see pages 18-21) Use the online convention registration system to reserve your tour time.

Don't forget about the onsite Career Development Event tour series. It's a great opportunity to show students the fun and excitement of national competitions.

Step 5

Block out the time your group will spend in the career show. You definitely won't be able to see everything there in one trip, so you might want to schedule an hour or so on more than one day. Make a list of what you must see the first time, then head back later for more. Encourage your students to explore future careers and educational opportunities.

Step 6

Make time for entertainment. (see pages 33-37) There are many options available—concerts, Dodge Xtreme Bulls Tour, Broncs and Bulls and even hypnotists.

Step 7

Schedule times to reconvene with your group throughout the day. It's a good idea to reserve time for group reflections at the close of each day. Allow each student to share his or her experiences and review the next day's schedule.

Step 8

On Wednesday, get pumped for the week by attending a special concert in Lucas Oil Stadium! Star power will be on hand during the Wednesday evening event to kick off an energy packed week! Up to 25,000 FFA members, advisors and guests will be able to partake of this star-studded celebration. For more information about the concert series, see page 33.

Planning Grid

	Wednesday	Thursday	Friday	Saturday
Before 8 a.m.				American Degree
8 - 9 a.m.	Pals Conference	Agriscience Fair	CDE Awards	
9 - 10 a.m.				Delegate Hearings
10 - 11 a.m.		Career Success Tours		

See page 50 for a blank planning grid





Planning and Registration

Convention in the Classroom

Convention doesn't have to end at the drop of the gavel on Saturday. How can your members apply what they've learned at home? Below are suggestions to help harness your students' post-convention enthusiasm and channel it into their academic studies.

- Work with fellow faculty members to develop interdisciplinary assignments that may substitute for work your members missed while at convention. Students could write essays for English class about their experiences, develop expense reports for math or accounting classes, or use information gathered at the career show and agriscience fair to prepare a presentation about scientific practices in agriculture for science classes.
- Ask agribusiness students to track their expenses while at the national FFA convention. Once they return home, students can develop expense reports for themselves or for the chapter.
- Ask students to collect ideas for chapter activities from FFA members across the country, then report on these ideas at a chapter meeting.
- The national FFA convention is a great place for scavenger hunts, photo hunts and signature hunts. Have students search for items and information from specific colleges, state FFA associations and agriculture-related businesses.

Official Dress

For sponsors, potential supporters, parents, members and advisors, the national FFA convention represents the character of the organization. It's important to maintain the professional, positive image FFA has earned over the years. Proper official FFA dress lends members a unique identity among young adults as leaders and thoughtful citizens. The National FFA Organization strongly encourages all advisors to ensure that FFA members in attendance at the 81st National FFA Convention follow the standards of proper official dress as outlined in the Official FFA Manual:

Females

- Black skirt – at least knee length, hemmed evenly across the bottom, with a slit no longer than two inches above the knee, excluding the kick pleat. Black slacks may be appropriate for traveling and outdoor activities.

- White collared blouse with official FFA scarf
- Black dress shoes with a closed heel and toe
- Black nylon hosiery
- Official FFA jacket zipped to the top

Males

- Black slacks
- White collared dress shirt with official FFA tie
- Black shoes
- Black socks
- Official FFA jacket zipped to the top

To order official dress items, visit:
www.ffaunlimited.org/blue-od.html

Pre-registration

Save time and money, and ensure that you create the best convention experience possible by pre-registering. There are two easy ways to pre-register:

1. Online at ffa.org
2. Via the official pre-registration form found in this publication. The official pre-registration form may also be downloaded and printed from myffa.org.

Only the official pre-registration form should be faxed or mailed to the National FFA Organization.

Fax completed official pre-registration forms to:
800-366-6556 (*Be sure to fax both sides of the registration form.*)

Mail completed official pre-registration forms to:

National FFA Center Convention Registration
P.O. Box 68960
Indianapolis, IN 46278-1370

Phone orders will not be accepted. Do not forget to include your housing and emergency contact information on the form. Tickets and convention badges will be shipped to you via UPS and should be received by Oct. 16. Please include a street address when filling out your pre-registration form. UPS does not deliver to post office boxes.

Completed and valid pre-registration ticket orders are filled based on the order in which they are received, via online entry, fax or mail. If any of your ticket choices are sold out by the time we receive your order, you will be notified by





Planning and Registration

e-mail or fax.

All registration and ticket sales are final, so place your order(s) accordingly.

Registrations need to be received by 5 p.m. (EDT) on Monday, Oct. 6. All registrations received after this date will not be processed.

On-site Registration Hours

Pre-registration is your best option to avoid the lines at convention. If you are unable to pre-register and take advantage of reduced prices, the main convention registration desk will be located in the Indiana Convention Center off the Maryland Street entrance.

Indiana Convention Center - Maryland Street Lobby

Tuesday, Oct. 21	1 - 6 p.m.
Wednesday, Oct. 22	8 a.m. - 8 p.m.
Thursday, Oct. 23	7 a.m. - 8 p.m.
Friday, Oct. 24	8 a.m. - 8 p.m.
Saturday, Oct. 25	6:30 - 9 a.m.

A convention registration desk will also be located at the Indiana State Fairgrounds, in the West Pavilion, on Tuesday, Oct. 21, and Wednesday, Oct. 22.

Indiana State Fairgrounds – West Pavilion

Tuesday, Oct. 21	1 - 6 p.m.
Wednesday, Oct. 22	8 a.m. - 5 p.m.

Some events sell out prior to the start of convention, during pre-registration; we cannot guarantee the availability of tickets to any specific event. Please plan accordingly.

Payment Methods

Cash, credit cards (Visa, MasterCard, Discover, and American Express), school checks, or original, signed school purchase orders will be also accepted.

Lost Badges

Lost convention badges can be replaced at the main convention registration desk at a cost of \$7 each. Advisor or chapter chaperone must accompany members to the registration desk when replacement registration badge is needed. The badge replacement form requires a chapter number and name, along with the advisor/chaperone signature and \$7 payment, which must be in cash. Badges

can also be replaced at the information booth in Consecro Fieldhouse during opening session show hours.

Convention Ticket Exchange and Refund Procedure

Opening session tickets may only be exchanged at the registration counter at the Indiana Convention Center. Exchange of these tickets will be accommodated if the desired session has available seats. All other tickets are nonrefundable and may not be exchanged or returned unless the event is cancelled. In the case of a cancellation, you will receive instructions on receiving your refund.

Please Remember!

National Days of Service activities and Career Success Tours are only available by registering online. Pre-registrations will be accepted through Oct. 6.





Forms





Planning Grid

	Wednesday	Thursday	Friday	Saturday
Before 8 a.m.				
8 - 9 a.m.				
9 - 10 a.m.				
10 - 11 a.m.				
11 a.m. - Noon				
Noon - 1 p.m.				
1 - 2 p.m.				
2 - 3 p.m.				
3 - 4 p.m.				
4 - 5 p.m.				
6 - 7 p.m.				
7 - 8 p.m.				
8 - 9 p.m.				
9 - 10 p.m.				
After 10 p.m.				



2008 NATIONAL FFA CONVENTION PRE-REGISTRATION FORM

This form must be received by Monday, October 6, 2008, 5 p.m. EDT. Please make a copy for your records. Tickets will be sent via UPS starting September 1, 2008. If they have not been received by October 16, 2008, call 1-888-332-2668. No other confirmation will be sent. Orders received after October 6 will not be processed and will need to register on site.

Mail your completed forms to:
National FFA Center
P.O. Box 68960
Indianapolis, IN 46268

OR Fax your completed forms to:
1-800-366-6556
Remember to fax both sides!

OR Order online at
<http://www.ffa.org>
and save shipping costs!

PAYMENT INFORMATION		
Credit Card Type: <input type="checkbox"/> Visa <input type="checkbox"/> M/C <input type="checkbox"/> Discover <input type="checkbox"/> AmEx	Card number (required):	
Name as it appears on Card (required):	Exp. Date (required):	
Signature:	Daytime phone (required):	
Invoice my school/chapter: <input type="checkbox"/>	P. O. No:	Check No.:
Bill to:		
City:	State:	Zip:
<small>The charge will appear on your credit card as "National FFA Organization"</small>		

CHAPTER INFORMATION (REQUIRED)			
Chapter Name:		Chapter No.:	
Registration Contact Name:		<input type="checkbox"/> Advisor <input type="checkbox"/> Parent	
Ship to Street Address: <small>(UPS address required. No P.O. boxes.)</small>			
City:	State:	Zip:	Phone # ()
Email:			Fax # ()
Please provide cell phone information. Will be used for onsite emergency only			Cell # ()

HOUSING INFORMATION (REQUIRED)			
Arrival date (in Indianapolis):		Departure Date (from Indianapolis):	
Emergency contact information for your group while at convention: This is needed in case we need to contact you regarding emergency situations			
Primary chaperone/advisor:		Cell # ()	
Secondary chaperone/advisor:		Cell # ()	
Convention hotel name:		Hotel Phone # ()	
Are you part of your State Housing Block: yes/no		Housing Confirmation No.:	
Number of rooms you have reserved in block: Single:		Double:	

*****Included with this fax page are the following pages
(please check those that are being faxed):**

Registration - Marked as Page 1 of 6 _____
 Registration - Marked as Page 2 of 6 _____
 Registration - Marked as Page 3 of 6 _____
 Shuttles - Marked as Page 4 of 6 _____
 Parking - Marked as Page 5 of 6 _____
 Entertainment - Marked as Page 6 of 6 _____

Emergency Communication System

The National FFA Organization is implementing an emergency communication system as part of the convention registration. The emergency communication system is designed to alert advisors and state staff of any emergency or high priority situation that might occur during national convention using text messaging, voicemail and/or e-mail. If an emergency does occur, a text message, voicemail or e-mail will be sent to your phone or mobile device alerting you of the specific situation. (Examples of emergencies include: fire, severe weather, crisis or disaster.) To be included in the emergency communication system, you must provide a contact number or e-mail address. Please indicate your preferred mode of contact (via cell phone and/or e-mail). (You can check yes to both).

- ☐ I want to participate in the Emergency Communication System by cell phone
☐ I want to participate in the Emergency Communication System by e-mail

Chapter No.(Required): _____

Please ensure all forms are filled out completely, and remember to fax all pages.

2008 NATIONAL FFA CONVENTION

PRE-REGISTRATION FORM

Registration for 2008 will be \$50/person for all persons not registered through the housing block. If you are staying in rooms that are part of the FFA Convention Housing Block then your pre-registration will be reduced to \$40, based on number of rooms reserved. This two-tiered fee structure will ensure that the cost of the convention facilities, which include Conseco Fieldhouse, Lucas Oil Stadium, the Indiana Convention Center and the Indiana State Fairgrounds, is shared equally by all convention participants.

Discount and full registration include: All sessions and unlimited shopping mall/career show for the ENTIRE convention. Includes one Opening Session Ticket (specify opening session on following page).

DISCOUNT REGISTRATION

Discount Registration -- for those that blocked rooms through the FFA Convention Housing Block. (For example, if you blocked 2 rooms with 4 per room -- you can purchase 8 discount registration at \$40 each. For additional registrations, you will need to purchase those at full registration price.) A valid housing confirmation number must be filled in on previous page.

<i>Item</i>	<i>Item Description</i>	<i>Qty.</i>	<i>Cost/person</i>	<i>Total</i>
DRA	Advisor Registration		\$40.00	
DRM	Member Registration		\$40.00	
DRO	Guest, Parent, Other		\$40.00	

<i>Item</i>	<i>Item Description</i>	<i>Qty.</i>	<i>Cost/person</i>	<i>Total</i>
DRAMD	American Degree Registration		\$40.00	
	Includes one American Degree reception ticket per recipient (please request American Degree reception tickets located on the next page.)			
	List Names: _____			

DRS	School Official Registration		\$40.00	

FULL REGISTRATION

Full Registration -- for those that did not block rooms through the FFA Convention Housing Block

<i>Item</i>	<i>Item Description</i>	<i>Qty.</i>	<i>Cost/person</i>	<i>Total</i>
RA	Advisor Registration		\$50.00	
RM	Member Registration		\$50.00	
RO	Guest, Parent, Other		\$50.00	
RS	School Official Registration		\$50.00	

Chapter No.(Required): _____

2008 NATIONAL FFA CONVENTION

PRE-REGISTRATION FORM

COMBO PASSES

Item	Item Description	Qty.	Cost/person	Total
CBW	Combo Pass - Wednesday <i>Includes all sessions and unlimited shopping mall/career show for Wednesday only. Includes one Opening Session Ticket (specify Opening Session below).</i>		\$22.00	
CBT	Combo Pass - Thursday <i>Includes all sessions and unlimited shopping mall/career show for Thursday only. Includes one Opening Session Ticket (specify Opening Session 1C below).</i>		\$22.00	
CBF	Combo Pass - Friday <i>Includes all sessions and unlimited shopping mall/career show for Friday only (Excludes opening sessions)</i>		\$22.00	

OPENING SESSION TICKETS

	Registration includes one opening session per registrant. Total number of OPENING SESSION tickets cannot exceed the total number of registrations. An OPENING SESSION ticket is required for admission to the corresponding session! No other ticket will be accepted	Mark "0" if unable to attend	First Choice	Second Choice
OS1	Opening Session 1A - Wednesday, October 22, 2008, 4 p.m.			
OS2	Opening Session 1B - Wednesday, October 22, 2008, 7:15 p.m.			
OS3	Opening Session 1C - Thursday, October 23, 2008, 8 a.m.			

Don't forget pre-session activities begin 30 minutes prior to Opening Sessions.

SINGLE REGISTRATION OPTIONS

For single day convention attendees ONLY. Items are included with FULL registrations listed on previous page

Item	Item Description	Qty.	Cost/person	Total
SS	One Single Session Pass (Not valid for any opening session)		\$9.00	
CS1W	Wednesday Career Show/Shopping Mall - One Day Pass. ***Does NOT permit entrance into convention sessions.		\$9.00	
CS1T	Thursday Career Show/Shopping Mall - One Day Pass. ***Does NOT permit entrance into convention sessions.		\$9.00	
CS1F	Friday Career Show/Shopping Mall - One Day Pass. ***Does NOT permit entrance into convention sessions.		\$9.00	

AMERICAN DEGREE SESSION TICKETS AND RECEPTION

List names of those receiving the American Degree: _____

Friday, October 24

ADRF	American Degree Reception - American Degree. <i>Recipient will receive a complimentary ticket No entry to shopping mall or career show</i>	ICC Sagamore Ballroom	7 p.m. - 9 p.m.		FREE	
ADRP	American Degree Reception - additional guests. <i>Guests will need to purchase tickets for the reception No entry to shopping mall or career show</i>	ICC Sagamore Ballroom	7 p.m. - 9 p.m.		\$15.00	

Saturday, October 25

SSAMDF	American Degree Session Only - Recipient. <i>If already purchased a full/discount registration, no need to request this ticket. No entry to shopping mall or career show</i>	Lucas Oil Stadium	7:45 a.m. - 11:30 a.m.		Free	
SSAMDP	American Degree Session Only - Parents. <i>(2 free tickets per American Degree recipient) No entry to shopping mall or career show</i>	Lucas Oil Stadium	7:45 a.m. - 11:30 a.m.		Free	
SSAMD	American Degree Session Only <i>No entry to shopping mall or career show</i>	Lucas Oil Stadium	7:45 a.m. - 11:30 a.m.		\$9.00	

Chapter No.(Required): _____

2008 NATIONAL FFA CONVENTION

PRE-REGISTRATION FORM

SHUTTLE INFORMATION

Hotel shuttle services will be provided from key hotel locations. Please select the number of hotel shuttle passes that you will need and from which location you will be utilizing the hotel shuttle bus. Hotel shuttle bus passes are valid the entire convention

HOTEL SHUTTLE DEPARTURE TIMES

Wednesday, October 22	8:00 a.m. - midnight	Friday, October 24	6:00 a.m. - 11:00 p.m.
Thursday, October 23	6:00 a.m. - midnight	Saturday, October 25	6:00 a.m. - 6:00 p.m.

HOTEL SHUTTLE ROUTE NAMES

Blue Route (Northwest - Pyramid Campus)	Best Western Country Suites, Comfort Inn & Suites North at the Pyramids, Days Inn & Suites Northwest, Drury Inn, Embassy Suites North, Holiday Inn North, La Quinta Inn Northwest
Tan Route (North Campus - Keystone at the Crossing)	Hyatt Place Indianapolis Keystone, Indianapolis Marriott North, Sheraton Indianapolis Hotel & Suites
Green Route (East Campus)	Comfort Inn East, Fairfield Inn & Suites Indianapolis East, Hampton Inn East, Comfort Suites East, Holiday Inn East, La Quinta Inn East, Marriott Hotel & Conference Center, Quality Inn & Suites East
Red Route (Airport Campus)	Adam's Mark Indianapolis
Orange Route (Airport Campus)	Courtyard by Marriott Airport, Days Hotel Airport, La Quinta Inn Airport Executive Drive, Ramada Indianapolis Airport, Hyatt Place Indianapolis Airport, La Quinta Inn Airport Lynhurst Drive, Quality Inn & Suites Airport
Gold Route (Airport Campus)	Holiday Inn Select Airport, Radisson Hotel Indianapolis Airport

HOTEL SHUTTLE PASSES

Blue Route (Northwest - Pyramid Campus)			Qty
BLUE-BW	Best Western Country Suites	\$25	
BLUE-CI	Comfort Inn & Suites North at the Pyramids	\$25	
BLUE-DAYS	Days Inn & Suites Northwest	\$25	
BLUE-DRURY	Drury Inn	\$25	
BLUE-ES	Embassy Suites North	\$25	
BLUE-HI	Holiday Inn North	\$25	
BLUE-LI	La Quinta Inn Northwest	\$25	

Green Route (East Campus)			Qty
GREEN-CI	Comfort Inn East	\$25	
GREEN-FI	Fairfield Inn & Suites, East	\$25	
GREEN-HI	Hampton Inn East	\$25	
GREEN-HS	Comfort Suites East	\$25	
GREEN-HO	Holiday Inn East	\$25	
GREEN-LI	La Quinta East	\$25	
GREEN-MH	Marriott Hotel & Conference Center	\$25	
GREEN-QI	Quality Inn & Suites	\$25	

Tan Route (North Campus-Keystone at the Crossing)			Qty
TAN-AS	Hyatt Place Indianapolis Keystone	\$25	
TAN-MN	Indianapolis Marriott North	\$25	
TAN-SI	Sheraton Indianapolis Hotel & Suites	\$25	

Red Route (Airport Campus)			Qty
RED-AM	Adam's Mark Indianapolis	\$25	

Orange Route (Airport Campus)			Qty
ORANGE-CM	Courtyard by Marriott Airport	\$25	
ORANGE-DI	Days Hotel Airport	\$25	
ORANGE-AS	Hyatt Place Airport	\$25	
ORANGE-LIEX	La Quinta Inn Executive Dr.	\$25	
ORANGE-LI	La Quinta Inn Lynhurst Dr.	\$25	
ORANGE-QI	Quality Inn & Suites Airport	\$25	
ORANGE-RI	Ramada Indianapolis Airport	\$25	

Gold Route (Airport Campus)			Qty
GOLD-HI	Holiday Inn Select Airport	\$25	
GOLD-RH	Radisson Hotel Airport	\$25	

Chapter No.(Required): _____

Please ensure all forms are filled out completely, and remember to fax all pages.

2008 NATIONAL FFA CONVENTION PRE-REGISTRATION FORM

PARKING INFORMATION

When you select your parking area, please indicate a first, second and third choice.

PARKING PASS TICKETS

Bus - Mini Bus Mini or short buses can also park in the bus and motor coach lots, NO vans allowed

Item	Item Description	Choice	Qty	Cost/Vehicle	Total
MINI4	#4-Victory Field Lot, 501 W. Maryland Street, 4 day pass (Wednesday - Saturday) MINI or Short BUS PARKING ONLY			\$50.00	
MINI4-5D	#4-Victory Field Lot, 501 W. Maryland Street, 5 day pass (Tuesday - Saturday)			\$62.00	

BUS AND MOTOR COACH

Item	Item Description	Choice	Qty	Cost/Vehicle	Total
BUS1	#1-449 Penn Lot, 449 Pennsylvania Street, 4 day pass (Wednesday - Saturday)			\$50.00	
BUS1-5D	#1-Express Lot #449, 449 Pennsylvania Street, 5 day pass (Tuesday - Saturday)			\$62.00	
BUS2	#2-Lucas Oil Stadium, 500 S. Capitol , 4 day pass (Wednesday - Saturday)			\$50.00	
BUS3	#3-CIB Lot 3, 350 W. South Street, 4 day pass (Wednesday - Saturday)			\$50.00	

GARAGES AND LOTS

Item	Item Description	Choice	Qty	Cost/Vehicle	Total
PARKA	#152 Union Station Garage, 301 S. Meridian, 7' clearance <i>\$10.00 deposit will be required upon first entry for garage radio card.</i>			\$70.00	
PARKE	#123-Moon Garage, 26 W. Georgia 6'8" clearance <i>\$10.00 deposit will be required upon first entry for garage radio card.</i>			\$70.00	
PARKF	#98-302 E. Washington Lot			\$45.00	
PARKI	#134-Virginia Avenue Garage, 155 S. Delaware Street, 8'2" clearance <i>\$10.00 deposit will be required upon first entry for garage radio card.</i>			\$45.00	
PARKJ	#155-CIB Lot5A/B, 301 S. Delaware Street			\$30.00	
PARKK	#137-LaRosa Lot, 101 S. Alabama			\$30.00	
PARKL	#207-Express Lot #405, 405 S. Pennsylvania Street			\$30.00	
PARKO	#224-White River State Park-South Lot, 650 W. Washington Street			\$45.00	
PARKT	#131-Sideline Garage, 121 E. Maryland Street, 7'3" clearance			\$50.00	

SPECIAL EVENT PARKING - AMERICAN DEGREE ONLY

Item	Item Description	Choice	Qty	Cost/Vehicle	Total
PARKS	Government Parking <i>This parking garage is only available Friday, after 6:00 p.m. to Sunday noon.</i>			\$15.00	

Chapter No.(Required): _____

Please ensure all forms are filled out completely, and remember to fax all pages.

2008 NATIONAL FFA CONVENTION PRE-REGISTRATION FORM

ENTERTAINMENT

CONCERT SERIES

Item	When	Function and/or Event	Location	Time	Qty.	Cost/person	Total
CON1	Wed	Concert 1 - James Otto, Taylor Swift	Lucas Oil Stadium	9:30 p.m.		\$25.00	
CON2	Thu	Concert 2 - Living Illusions, Michael Peterson	Lucas Oil Stadium	9:30 p.m.		\$15.00	
**Receive a \$5 discount for every CON1 & CON2 combo you purchase.							

RODEO

Item	When	Function and/or Event	Location	Time	Qty.	Cost/person	Total
BB3	Thu	Bulls and Broncs Championship	Indiana State Fairgrounds	6:30 p.m.		\$25	
BB1	Fri	PRCA Xtreme Bulls	Indiana State Fairgrounds	4:30 p.m.		\$25	
BB2	Fri	PRCA Xtreme Bulls	Indiana State Fairgrounds	8:30 p.m.		\$25	
BULLS		Shuttle Pass-Rodeo-Only. Pass valid for one round trip				\$10	

HYPNOTISTS

Item	When	Function and/or Event	Location	Time	Qty.	Cost/person	Total
WAE1	Wed	Jim Wand - Hypnotist	ICC - Sagamore 3-5	6:00 p.m.		\$10	
WAE2	Wed	Jim Wand - Hypnotist	ICC - Sagamore 3-5	8:00 p.m.		\$10	
TAE1	Thu	Dr. Al Snyder - Hypnotist	ICC - Sagamore 3-5	6:00 p.m.		\$10	
TAE2	Thu	Jim Wand - Hypnotist	ICC - Sagamore 3-5	8:00 p.m.		\$10	
TAE3	Thu	Jim Wand - Hypnotist	ICC - Sagamore 3-5	10:00 p.m.		\$10	
FAE1	Fri	Jim Wand - Hypnotist	ICC - 205 - 207	2:00 p.m.		\$10	
FAE2	Fri	Jim Wand - Hypnotist	ICC - 205 - 207	4:00 p.m.		\$10	
FAE3	Fri	Dr. Al Snyder - Hypnotist	ICC - 205 - 207	6:00 p.m.		\$10	
FAE4	Fri	Dr. Al Snyder - Hypnotist	ICC - 205 - 207	8:00 p.m.		\$10	

LUNCHEONS AND DINNERS

Item	When	Function and/or Event	Location	Time	Qty.	Cost/person	Total
PL	Thu	Proficiency Luncheon	Marriott-Marriott Ballroom I-X	12:00 p.m.		\$25	
AGSI	Fri	Agriscience Luncheon	Westin-Grand Ballroom I -V	11:30 a.m.		\$20	
LD	Fri	WLC Reunion/National Leadership Dinner	Westin-Grand Ballroom IV-V	4:30 p.m.		\$20	

Shipping and handling for on-line orders is free.

Shipping and handling for faxed or mail orders is:

orders \$100.00 or less is \$7.00.

orders \$100.01 or more is \$10.00

Subtotal: _____

Shipping: _____

Total: _____

(no refunds)

Please do not to use this registration form as payment documentation for on line orders.

Invoices will be sent to chapters using POs to place their on line order.

Chapter No.(Required): _____

Please ensure all forms are filled out completely, and remember to fax all pages.