

# Enrollment Management Steering Group

May 21, 2012

Minutes

## Minutes

- Minutes from the January meeting previously were distributed. Minutes from all previous meetings are available by visiting <http://registrar.iupui.edu/emc/emsc-meetings.shtml>

## Discussion Items

### **Fall 2012 Admissions Update** *Chris Foley*

- Application numbers are now essentially the same as College Go! Week in 2010 when that initiative inflated the number of beginner applicants. However, the numbers for this year seem more solid because these students have gone through the regular application process as opposed to College Go! Week.
- Offers of admission to freshmen are at record highs.
- With the higher admission standards this year we expected to finish about even to perhaps 50-100 students down. Given the change in requirements we are pleased with the numbers.
- Transfer numbers are similar to College Go! in 2010 when the surge in beginner applicant processing resulted in significant delays in processing transfer applications.
- We have made some improvements that allow us to process applications more efficiently. We are within an acceptable processing turn-around for beginners with transfers running 4-6 weeks, though not our preferred turn-around of two weeks. We have requested two additional positions to help with both the growing volume of applications and to shorten our current processing cycle.
- Though the advertised deadline was May 1<sup>st</sup>, we are still accepting enrollment deposits. Given the differing levels of commitment, we have some challenges in comparing deposits with to earlier *intent to enroll* numbers from 2011. At this point we are within 50 of last year's number. If they yield at same rate, we will be down a bit. If, as expected due to the level of commitment required the deposits yield a bit higher than the *intent to enroll* totals, we should be in line with last year's number of enrolled students.
- The applicant pool is just as diverse as last year—perhaps a bit more, though there are shifts amongst the categories, particularly to “two or more races.”
- Non-resident numbers look good. First generation down about 4%. 21<sup>st</sup> Century Scholars are holding steady.
- We continue to increase the number of incoming students with Academic Honors diplomas: 46% had this diploma in 2011, 53% this year.
- If current deposit vs intent to enroll trends holds, average SAT, GPA, and high school rank will all jump for this fall. The last page of the Admissions handout (see p. 11 below) offers more comparisons broken out by SAT range, scholarships offered, etc.
- Bottom line—deposits for 2012 look similar to the *intent to enroll* totals in 2011. In 2013—admission standards will go up again and we expect another 150-200 student drop in enrolled students which may not be replaced in the first year.
- Admissions is expanding its use of social media, doing more recruitment, and tweaking communication for 2013.

- With scholarship funding not growing at the same rate as we are generating applications from high ability students, we will have fewer students overall enrolling, but also not be able to get targeted high performers to yield as we would like (which we will depend upon to replace the loss described above). Anticipated yield will continue to decline.
- Becky added that the allocation for the Admissions-based Chancellor's scholarships as been over spent. The deadline will be moved earlier for 2013 which will have the result of reducing numbers. This will also affect Honors College size as have to be eligible for Chancellors scholarship to be admitted to Honors. We are over budget in other scholarships, but we haven't been informed of our scholarship budget for 2012. We have to work on these a year in advance.
- Chris concluded that the campus needs a very holistic conversation. We (both the campus and very specifically Enrollment Services) risk being set up for failure—we will be charged to recruit but not have the funding to lead them to enroll in a competitive environment.

### **Factors Impacting Enrollment for Fall 2012 and 2013**

- The enrollment pipeline is being squeezed
  - With changes in Admissions standards and competition for better qualified applicants, we likely will have a decline in the number of entering students (see above)
  - The state continues to push for students to start at Ivy Tech.
  - The number of transfers also is likely to be decline. Part of this may be the result of the increased emphasis on retention at schools everywhere.
  - Intercampus transfers have not been growing and returning student numbers are declining.
  - While the continued [growth](#) in the number of IUPUI graduates is always good news, their departure will hit enrollments in future years. The [projected number](#) of 2011-12 graduates was 6,531. [Note: Based on information available subsequent to the meeting and, if certificates are included, the number of degrees awarded grew by approximately 5%.]
  - We had a dip in our first year retention rate for the [2010 cohort](#); we may see similar dip in 2011 cohort.
  - While we hope to see [continued growth](#) in the number of transfers from Ivy Tech, the larger average number of transfer credits will have an increased impact on credits taught in our lower level courses.
- UIRR's [enrollment projection](#) for IUPUI is relatively flat for the next decade with a dip in 2014. IUPUI was projected to decline 200 heads for 2013 and approximately 450 for 2014. Note these projections were made before the most recent change in Admissions standards which could augment the decline.

### **External factors impacting enrollment**

- Nationally there have been continuing discussions and multiple news stories regarding student debt. This will cause prospective students and their families to be more cautious in educational choices.
- Stafford loan rates will increase from 3.4% to 6.8% this summer unless a law that cut the interest rates that is scheduled to expire at the end of June is extended or adjusted.

- A [new study](#) reported 50% of recent baccalaureate-degree recipients are jobless or underemployed.
- Institution of a Pell [600% rule](#) will limit Pell grants to eligible students to six years of Pell grants but no more. This change likely will lead to an additional hit on our enrollment in coming years.
- The 21<sup>st</sup> Century Scholars GPA requirements for both high school performance and retention of the award in college will be raised by the state. This will result in fewer entry and continuing enrolled recipients.

#### **Internal factors and actions**

- We have permitted the tuition differential to grow substantially between non-residents and residents. Our current rates show tuition for one year of \$7,500 for residents and \$25,800 for non-residents. Include the overall [cost-of-attendance](#) and the amounts climb to \$22,500 for residents and \$38,800 for non-residents. We perceived in out-of-state markets as a \$40,000/year institution. We are pricing ourselves out of the NR market.
- Student Financial Services has written to non-resident admits who have \$10,000 or more in unmet need, emphasizing caution in assuming significant debt and explaining available options. This letter is in the student's interest, but also recognizes that we have been seeing students leaving after one year due to debt issues. Helping students make the best possible decision benefits the student and our retention rates.
- Change in housing for beginning students with conversation of hotel is a positive, though it will not fix all of our recruitment and retention issues.
- We have concerns with current marketing and branding support by the university.

#### **Next steps**

- All these issues show why we need to look at enrollment management—especially challenging for next several years. With Nasser Paydar's arrival we will have the opportunity to work on a Strategic Enrollment Plan.
- The suggestion was raised to bring these related conversations together as a possible agenda item for the June 6<sup>th</sup> deans' meeting. *Subsequent to the Steering Group meeting, the June deans' meeting was cancelled.*
- We need to look again at enrollment projections by individual schools. This last was done in [2006](#).
- We need to review the current and future classroom needs and mix including a projection of total contact hours for which we need space. We need to have enrollment projections talking to space planning. A key component of such a review is a detailed Capacity Analysis study. A review of current classroom inventory suggests that Indianapolis can accommodate around 30,000 students. In the Fall of 2011 Indianapolis enrolled just under 29,000. If we increase Indianapolis enrollment above 30,000, other infrastructure and support elements come into play.
- Just holding even in enrollment will be a challenge despite all the good things that are being done through recruitment, both centrally and by the schools. Becky and Chris will be visiting deans in schools with undergraduate enrollment to discuss expanded coordination and augmentation of recruiting efforts and best use of scholarship funding sources to support that work.

### **Persistence, Dropout, and Graduation Rates Gary Pike**

- See below for student success rates for beginner cohorts 1999-2005 based on high school diploma type, high school percentile rank quartile as well as entering transfer cohorts for the same years.

### **ICHE Performance Metrics Gary Pike**

- In its recently updated [Strategic Plan](#), ICHE included revised performance metrics, including an “on-time” four-year graduation rate. *See below*
  - [Press release](#)
  - ICHE 2013-2015 Performance Funding Metrics. *See below*
  - Predicted IUPUI graduation rates and persistence for Indiana residents and all full-time beginners (IMIR). *See below*.
  - PowerPoint for IUPUI persistence and graduation data over 4-, 5-, and 6-year periods, both for Indiana residents and for all full-time beginners (IMIR). *See [separate attachment](#) available from the EMC Steering Group Minutes site.*
- Comments on IMIR reports
  - In developing these graduation-rate projections Gary calculated separate estimates for full-time Indiana residents and for all IUPUI beginners. Because graduation rates are closely related to persistence rates (persistence rates explain 60%-90% of the variance in graduation rates), he based graduation rate projections on current retention rates. (Interestingly, the model works better for all full-time beginners than for Indiana residents.) Because we do not have retention rates for the 2011-2014 cohorts, Gary projected linear trends for those years (see slides below). He seriously doubts the increase will be linear, but over the long run the increase may approximate a linear trend.

#### **For Indiana beginners**

- The 4-year graduation rate may approach 20% by 2018 (the 2014 cohort).
- The 5-year graduation rate should be somewhat less than 40% by 2019 (the 2014 cohort).
- The 6-year graduation rate likely will be less than 45% by 2020 (the 2014 cohort).

#### **For all beginners**

- The 4-year graduation rate should be approximately 20% by 2018.
- The 5-year graduation rate should be slightly higher than 40% by 2019.
- The 6-year graduation rate will be 45%-50% by 2020.

### **Information Items**

- **Undergraduate Enrollment by School 2002-2012 Gary Pike**
  - Following a request from the chancellor, IMIR produced a report that shows changes in undergraduate enrollment for Fall and Spring terms between 2002 and 2012. *See below*
  - One source of growth is the addition of new programs, such as the B.S. and certificates in Health Sciences created by the School of Health and Rehabilitation Sciences.
  - Another source of change is the movement of programs such as Public Health from SPEA to Medicine in 2008.

- **Student Loan Debt**

- The *New York Times* published a front-page story on May 13, 2012 entitled “[A Generation Hobbled by the Soaring Cost of College.](#)” The article was accompanied by a number of interactive charts that display how the amount of student loan debt carried by IUPUI 2010 graduates compares with other institutions, sorted by the institutions with similar percentages of graduates carrying debt, graduation rates, and institutional size. See the chart on debt below. The debt is mapped against tuition for the year. The *Times* followed Sunday’s story with one published two days later that examined how some colleges are [beginning to confront costs](#).
- IUPUI is at high level of student debt compared to other institutions with in our tuition and fees cost.

- **Scholarship offers and acceptances for Fall 2012 as of May 1<sup>st</sup> acceptance deadline**

| Scholarship                    | Accepted   | Total Offered | Accept - Offer | PIC Last Year Accept – Offer | % Change   |
|--------------------------------|------------|---------------|----------------|------------------------------|------------|
| International / ELS Ambassador | 7          | 21            | 33%            | 14% (3/22)                   | + 19%      |
| Service Award                  | 40         | 197           | 20%            | 15% (24/164)                 | + 5%       |
| Val/Sal Scholarship            | 30         | 60            | 50%            | 37% (21/57)                  | +13%       |
| Academic Honors Scholarship    | 97         | 294           | 33%            | 30% (35/195)                 | +3%        |
| Dean of Faculties              | 100        | 259           | 39%            | 28% (152/548)                | +11%       |
| Dean's Recognition             | 17         | 88            | 19%            | 7% (7/99)                    | +12%       |
| Chancellor’s Scholarships      | 160        | 436           | 37%            | 33%(120/368)                 | +4%        |
| <b>Totals</b>                  | <b>451</b> | <b>1355</b>   | <b>33%</b>     | <b>25%(362/1,453)</b>        | <b>+8%</b> |

(The following provides information on each of the scholarships as an FYI)

**International Ambassador Award/ ELS Ambassador Award**

\$3,500 renewable up to 4 years, international students who have a minimum iBT TOEFL score of 80, a minimum SAT Critical Reading Score of 450, or an IELTS score of 6.0 or successfully complete the ELS Language Centers Level 112.

**IUPUI Service Award**

\$5,000 annually for 4 years, students who have a minimum high school GPA of 3.0 (on a 4.0 scale) and 1050 SAT/ 23 ACT minimum (or 525 Math score only for international students from non-English speaking countries) may be eligible for this scholarship.

**Valedictorian and Salutatorian Scholarships**

\$5,000 (resident) / \$10,000 (non-resident) annually for 4 years, students who are ranked first or second in their high school class may qualify for this scholarship.

**IUPUI Academic Honors Scholarship**

\$1,000 annually for 4 years, students who have a minimum high school GPA of 3.25 (on a 4.0 scale) and who score 1150 or higher on the SAT or 25 on the ACT and graduate high school with the Indiana Academic Honors Diploma may be eligible for this scholarship.

**IUPUI Dean of the Faculties Scholarships (DOFS)**

\$4,000 annually for 4 years, students who have a minimum high school GPA of 3.5 (on a 4.0 scale) and who score 1200 or higher on the SAT or 26 on the ACT may be eligible for this scholarship.

**Dean’s Recognition Scholarship (DRS)**

\$8,000 annually for 4 years, students who have a minimum high school GPA of 3.5 (on a 4.0 scale) and who score 1200 or higher on the SAT ( 600 Math only score for international students from non- English speaking countries) or 26 on the ACT may be eligible for this scholarship.

### ***IUPUI Chancellor's Scholarship***

\$8,000 (resident)/ \$12,000 (non-resident) annually for 4 years, students who have a minimum high school GPA of 3.75 (on a 4.0 scale) with a minimum 1250 SAT or 28 ACT score may be eligible for this scholarship. Chancellor's Scholars are automatically admitted to the IUPUI Honors College.

- **Proposal for a Transfer High-Ability Diversity Scholarship**

#### **Overview**

- Given the competition to recruit high ability minority students, IUPUI must strategically align and augment available resources to provide the maximum ability to recruit these students who add diversity to our undergraduate student body.
- The purpose of the Transfer High Ability Diversity Scholarship is to provide a well-coordinated and sufficiently funded process to recruit and support undergraduate students at IUPUI-Indianapolis. The program is designed with an emphasis on addressing issues related to the academic success of students from populations historically underrepresented in institutions of higher education within the state of Indiana as defined by race, gender, and/or academic interest.

#### **Criteria**

- Since this scholarship is a recruitment tool, recipients must be **new transfer** students to IUPUI who are U.S. Citizens or Permanent Residents. Recipients must have a FAFSA on file for the upcoming academic year. This scholarship will be awarded to 3 students eligible for instate tuition and 3 non-resident students every year for a 3 year trial based on a selective process. The total package offered to the student will be based on adding the Transfer High Ability Diversity Scholarship to other admission based awards.
  - Cumulative GPA  $\geq 3.75$  at point of admission
  - Minimum of 60 transferable credit hours completed
  - Ability to contribute to the diversity of IUPUI presented in a personal statement
  - Maintain fulltime enrollment and a cumulative IU GPA  $\geq 3.3$  to receive 2<sup>nd</sup> year funding
  - **Resident award** range: up to \$5K annually for two years in addition to admission based scholarships
  - **Non-resident award** range: up to \$9K annually for two years in addition to admission based scholarships
- A proposal for a Beginner High Ability Diversity Scholarship did not receive funding.

#### **Upcoming EMC Meetings and tentative topics**

|                    |           |        |
|--------------------|-----------|--------|
| September 21, 2012 | 1:00-2:30 | CE 268 |
| November 16, 2012  | 1:00-2:30 | TBD    |
| January 25, 2013   | 1:00-2:30 | CE 268 |
| April 19, 2013     | 1:00-2:30 | CE 268 |

#### **Upcoming EMC Steering Group Meetings** To be determined

#### **Future topics**

- Multiracial is now our third largest "ethnicity/race" and it is our fastest growing population. We may need to start having a better understanding of how to serve multiracial students on our campus because the group is almost as large as the number of African American and Hispanic/Latino students.
- Members are encouraged to submit ideas for future topics to Becky.



## Summer/Fall UG Admissions Summary

### Applicants Through Sunday of Week 18 (05/02/2010, 05/01/2011 and 04/29/2012)

+/-5% change on denominator cells > 10

|                                | Applicants <sup>2</sup> |               |               |                |                | Admits <sup>2</sup> |               |               |                |                | Enrolled <sup>1</sup> |          |          |                |                |
|--------------------------------|-------------------------|---------------|---------------|----------------|----------------|---------------------|---------------|---------------|----------------|----------------|-----------------------|----------|----------|----------------|----------------|
|                                | 2010                    | 2011          | 2012          | 1 Yr.<br>% Chg | 2 Yr.<br>% Chg | 2010                | 2011          | 2012          | 1 Yr.<br>% Chg | 2 Yr.<br>% Chg | 2010                  | 2011     | 2012     | 1 Yr.<br>% Chg | 2 Yr.<br>% Chg |
| <b>Beginners</b>               |                         |               |               |                |                |                     |               |               |                |                |                       |          |          |                |                |
| BL                             | 36,592                  | 35,077        | 35,169        | 0.3%           | -3.9%          | 23,535              | 25,297        | 26,112        | 3.2%           | 10.9%          | 0                     | 0        | 0        |                |                |
| IUPUI                          | 11,313                  | 9,696         | 10,760        | 11.0%          | -4.9%          | 6,623               | 6,354         | 6,936         | 9.2%           | 4.7%           | 0                     | 0        | 0        |                |                |
| EA                             | 944                     | 960           | 1,145         | 19.3%          | 21.3%          | 500                 | 476           | 612           | 28.6%          | 22.4%          | 0                     | 0        | 0        |                |                |
| KO                             | 782                     | 726           | 847           | 16.7%          | 8.3%           | 548                 | 458           | 540           | 17.9%          | -1.5%          | 0                     | 0        | 0        |                |                |
| NW                             | 1,324                   | 1,238         | 1,238         | 0.0%           | -6.5%          | 886                 | 805           | 715           | -11.2%         | -19.3%         | 0                     | 0        | 0        |                |                |
| SB                             | 2,104                   | 1,991         | 1,930         | -3.1%          | -9.3%          | 1,252               | 1,361         | 1,292         | -5.1%          | 3.2%           | 0                     | 0        | 0        |                |                |
| SE                             | 2,043                   | 1,784         | 1,795         | 0.6%           | -12.1%         | 1,491               | 1,266         | 1,292         | 2.1%           | -13.3%         | 0                     | 0        | 0        |                |                |
| <b>IU Dupl.</b>                | <b>55,102</b>           | <b>51,472</b> | <b>52,884</b> | <b>2.7%</b>    | <b>-4.0%</b>   | <b>34,835</b>       | <b>36,017</b> | <b>37,499</b> | <b>4.1%</b>    | <b>7.6%</b>    |                       |          |          |                |                |
| <b>Multi-Campus Applicants</b> |                         |               |               |                |                |                     |               |               |                |                |                       |          |          |                |                |
| 4+ Campuses                    | 28                      | 8             | 28            | 250.0%         | 0.0%           | 4                   | 1             | 0             | 500.0%         | 50.0%          |                       |          |          |                |                |
| 3 Campuses                     | 518                     | 220           | 321           | 45.9%          | -38.0%         | 136                 | 57            | 93            | 63.2%          | -31.6%         |                       |          |          |                |                |
| 2 Campuses                     | 5,311                   | 3,432         | 3,943         | 14.9%          | -25.8%         | 2,117               | 1,604         | 1,865         | 16.3%          | -11.9%         |                       |          |          |                |                |
| <b>IU Undupl.</b>              | <b>48,658</b>           | <b>47,576</b> | <b>48,204</b> | <b>1.3%</b>    | <b>-0.9%</b>   | <b>32,429</b>       | <b>34,296</b> | <b>35,430</b> | <b>3.3%</b>    | <b>9.3%</b>    | <b>0</b>              | <b>0</b> | <b>0</b> |                |                |

|                                    | Applicants   |              |              |                |                | Admits       |              |              |                |                | Enrolled <sup>1</sup> |          |          |                |                |
|------------------------------------|--------------|--------------|--------------|----------------|----------------|--------------|--------------|--------------|----------------|----------------|-----------------------|----------|----------|----------------|----------------|
|                                    | 2010         | 2011         | 2012         | 1 Yr.<br>% Chg | 2 Yr.<br>% Chg | 2010         | 2011         | 2012         | 1 Yr.<br>% Chg | 2 Yr.<br>% Chg | 2010                  | 2011     | 2012     | 1 Yr.<br>% Chg | 2 Yr.<br>% Chg |
| <b>First-Degree Ext. Transfers</b> |              |              |              |                |                |              |              |              |                |                |                       |          |          |                |                |
| BL                                 | 3,278        | 3,332        | 3,104        | -6.8%          | -5.3%          | 808          | 1,111        | 997          | -10.3%         | 23.4%          | 0                     | 0        | 0        |                |                |
| IUPUI                              | 3,059        | 3,395        | 3,350        | -1.3%          | 9.5%           | 1,199        | 1,475        | 1,308        | -11.3%         | 9.1%           | 0                     | 0        | 0        |                |                |
| EA                                 | 248          | 411          | 429          | 3.9%           | 73.0%          | 147          | 199          | 205          | 3.0%           | 39.5%          | 0                     | 0        | 0        |                |                |
| KO                                 | 327          | 311          | 302          | -2.9%          | -7.6%          | 197          | 191          | 195          | 2.1%           | -1.0%          | 0                     | 0        | 0        |                |                |
| NW                                 | 470          | 474          | 430          | -9.3%          | -6.5%          | 260          | 254          | 184          | -27.6%         | -29.2%         | 0                     | 0        | 0        |                |                |
| SB                                 | 595          | 549          | 513          | -6.6%          | -13.8%         | 340          | 326          | 269          | -17.5%         | -20.9%         | 0                     | 0        | 0        |                |                |
| SE                                 | 568          | 572          | 529          | -7.5%          | -6.9%          | 275          | 276          | 252          | -6.7%          | -8.4%          | 0                     | 0        | 0        |                |                |
| <b>IU Dupl.</b>                    | <b>8,545</b> | <b>9,046</b> | <b>8,657</b> | <b>-4.3%</b>   | <b>1.3%</b>    | <b>3,226</b> | <b>3,832</b> | <b>3,410</b> | <b>-11.0%</b>  | <b>5.7%</b>    |                       |          |          |                |                |
| <b>Multi-Campus Applicants</b>     |              |              |              |                |                |              |              |              |                |                |                       |          |          |                |                |
| 4+ Campuses                        | 0            | 0            | 0            |                |                | 0            | 0            | 0            |                |                |                       |          |          |                |                |
| 3 Campuses                         | 5            | 6            | 4            | -33.3%         | -20.0%         | 3            | 3            | 0            | -100.0%        | -100.0%        |                       |          |          |                |                |
| 2 Campuses                         | 191          | 207          | 205          | -1.0%          | 7.3%           | 50           | 54           | 41           | -24.1%         | -16.0%         |                       |          |          |                |                |
| <b>IU Undupl.</b>                  | <b>8,344</b> | <b>8,827</b> | <b>8,444</b> | <b>-4.3%</b>   | <b>1.2%</b>    | <b>3,170</b> | <b>3,772</b> | <b>3,369</b> | <b>-10.7%</b>  | <b>6.3%</b>    | <b>0</b>              | <b>0</b> | <b>0</b> |                |                |

1 - Enrolled indicates registered for classes for the fall semester. Enrollment figures are currently insignificant and are not being displayed.

2 - The 2010 applicant and admit counts include beginners (10,026) who applied during College Go Week, October 12-16, 2009. This initiative inflated the counts of applicants and admits making comparisons to other years tenuous.

**Summer/Fall UG Admissions Summary**  
Applicants Through Sunday of Week 18 (05/02/2010, 05/01/2011 and 04/29/2012)

Return to overall view

+/-5% change on denominator cells > 10

|                                 | Applicants <sup>5</sup> |               |               |             |              | Admits <sup>5</sup> |              |              |             |             | Deposits |          |              |             |             | Enrolled <sup>1</sup> |          |          |             |             |
|---------------------------------|-------------------------|---------------|---------------|-------------|--------------|---------------------|--------------|--------------|-------------|-------------|----------|----------|--------------|-------------|-------------|-----------------------|----------|----------|-------------|-------------|
|                                 | 2010                    | 2011          | 2012          | 1 Yr. % Chg | 2 Yr. % Chg  | 2010                | 2011         | 2012         | 1 Yr. % Chg | 2 Yr. % Chg | 2010     | 2011     | 2012         | 1 Yr. % Chg | 2 Yr. % Chg | 2010                  | 2011     | 2012     | 1 Yr. % Chg | 2 Yr. % Chg |
| Beginners                       | 10,807                  | 9,250         | 10,313        | 11.5%       | -4.6%        | 6,247               | 5,999        | 6,581        | 9.7%        | 5.3%        | 0        | 0        | 2,303        |             |             | 0                     | 0        | 0        |             |             |
| First-Degree External Transfers | 2,942                   | 3,259         | 3,196         | -1.9%       | 8.6%         | 1,123               | 1,379        | 1,226        | -11.1%      | 9.2%        | 0        | 0        | 500          |             |             | 0                     | 0        | 0        |             |             |
| <b>Total</b>                    | <b>13,749</b>           | <b>12,509</b> | <b>13,509</b> | <b>8.0%</b> | <b>-1.7%</b> | <b>7,370</b>        | <b>7,378</b> | <b>7,807</b> | <b>5.8%</b> | <b>5.9%</b> | <b>0</b> | <b>0</b> | <b>2,803</b> |             |             | <b>0</b>              | <b>0</b> | <b>0</b> |             |             |

|                                 | Applicants <sup>5</sup> |       |       |             |             | Admits <sup>5</sup> |       |       |             |             | Deposits |      |       |             |             | Enrolled <sup>1</sup> |      |      |             |             |
|---------------------------------|-------------------------|-------|-------|-------------|-------------|---------------------|-------|-------|-------------|-------------|----------|------|-------|-------------|-------------|-----------------------|------|------|-------------|-------------|
|                                 | 2010                    | 2011  | 2012  | 1 Yr. % Chg | 2 Yr. % Chg | 2010                | 2011  | 2012  | 1 Yr. % Chg | 2 Yr. % Chg | 2010     | 2011 | 2012  | 1 Yr. % Chg | 2 Yr. % Chg | 2010                  | 2011 | 2012 | 1 Yr. % Chg | 2 Yr. % Chg |
| <b>Conv. SAT/ACT</b>            |                         |       |       |             |             |                     |       |       |             |             |          |      |       |             |             |                       |      |      |             |             |
| 1300+                           | 444                     | 396   | 532   | 37.8%       | 19.8%       | 401                 | 356   | 483   | 35.7%       | 20.4%       | 0        | 0    | 173   |             |             | 0                     | 0    | 0    |             |             |
| 1100-1290                       | 2,028                   | 1,768 | 1,942 | 9.8%        | -4.2%       | 1,680               | 1,569 | 1,708 | 8.9%        | 1.7%        | 0        | 0    | 524   |             |             | 0                     | 0    | 0    |             |             |
| 1000-1090                       | 1,889                   | 1,545 | 1,733 | 12.2%       | -8.3%       | 1,465               | 1,323 | 1,465 | 10.7%       | 0.0%        | 0        | 0    | 496   |             |             | 0                     | 0    | 0    |             |             |
| <1000                           | 4,646                   | 4,146 | 4,582 | 10.5%       | -1.4%       | 2,523               | 2,569 | 2,743 | 6.8%        | 8.7%        | 0        | 0    | 1,007 |             |             | 0                     | 0    | 0    |             |             |
| No Score                        | 1,800                   | 1,405 | 1,524 | 8.5%        | -15.3%      | 178                 | 182   | 182   | 0.0%        | 2.2%        | 0        | 0    | 163   |             |             | 0                     | 0    | 0    |             |             |
| <b>In-State<sup>3</sup></b>     |                         |       |       |             |             |                     |       |       |             |             |          |      |       |             |             |                       |      |      |             |             |
| 1300+                           | 381                     | 269   | 387   | 43.9%       | 1.6%        | 345                 | 255   | 373   | 46.3%       | 9.1%        | 0        | 0    | 142   |             |             | 0                     | 0    | 0    |             |             |
| 1100-1290                       | 1,860                   | 1,515 | 1,622 | 7.1%        | -12.8%      | 1,541               | 1,360 | 1,459 | 7.3%        | -5.3%       | 0        | 0    | 461   |             |             | 0                     | 0    | 0    |             |             |
| 1000-1090                       | 1,769                   | 1,422 | 1,595 | 12.2%       | -9.8%       | 1,381               | 1,223 | 1,358 | 11.0%       | -1.7%       | 0        | 0    | 458   |             |             | 0                     | 0    | 0    |             |             |
| <1000                           | 4,405                   | 3,806 | 4,204 | 10.5%       | -4.6%       | 2,398               | 2,392 | 2,534 | 5.9%        | 5.7%        | 0        | 0    | 957   |             |             | 0                     | 0    | 0    |             |             |
| No Score                        | 1,478                   | 993   | 1,036 | 4.3%        | -29.9%      | 110                 | 105   | 77    | -26.7%      | -30.0%      | 0        | 0    | 30    |             |             | 0                     | 0    | 0    |             |             |
| <b>Out-of-State<sup>3</sup></b> |                         |       |       |             |             |                     |       |       |             |             |          |      |       |             |             |                       |      |      |             |             |
| 1300+                           | 63                      | 117   | 145   | 23.9%       | 130.2%      | 56                  | 101   | 110   | 8.9%        | 96.4%       | 0        | 0    | 31    |             |             | 0                     | 0    | 0    |             |             |
| 1100-1290                       | 168                     | 253   | 320   | 26.5%       | 90.5%       | 139                 | 209   | 249   | 19.1%       | 79.1%       | 0        | 0    | 63    |             |             | 0                     | 0    | 0    |             |             |
| 1000-1090                       | 120                     | 123   | 138   | 12.2%       | 15.0%       | 84                  | 100   | 107   | 7.0%        | 27.4%       | 0        | 0    | 38    |             |             | 0                     | 0    | 0    |             |             |
| <1000                           | 241                     | 340   | 378   | 11.2%       | 56.8%       | 125                 | 177   | 209   | 18.1%       | 67.2%       | 0        | 0    | 50    |             |             | 0                     | 0    | 0    |             |             |
| No Score                        | 322                     | 412   | 488   | 18.4%       | 51.6%       | 68                  | 77    | 105   | 36.4%       | 54.4%       | 0        | 0    | 73    |             |             | 0                     | 0    | 0    |             |             |

|  | Applicants <sup>5</sup> |              |              |              |              | Admits <sup>5</sup> |              |              |              |              | Deposits |          |            |             |             | Enrolled <sup>1</sup> |          |          |             |             |
|--|-------------------------|--------------|--------------|--------------|--------------|---------------------|--------------|--------------|--------------|--------------|----------|----------|------------|-------------|-------------|-----------------------|----------|----------|-------------|-------------|
|  | 2010                    | 2011         | 2012         | 1 Yr. % Chg  | 2 Yr. % Chg  | 2010                | 2011         | 2012         | 1 Yr. % Chg  | 2 Yr. % Chg  | 2010     | 2011     | 2012       | 1 Yr. % Chg | 2 Yr. % Chg | 2010                  | 2011     | 2012     | 1 Yr. % Chg | 2 Yr. % Chg |
| <b>Residency<sup>3</sup></b>               |                         |              |              |              |              |                     |              |              |              |              |          |          |            |             |             |                       |          |          |             |             |
| In-State                                   | 9,893                   | 8,005        | 8,844        | 10.5%        | -10.6%       | 5,775               | 5,335        | 5,801        | 8.7%         | 0.5%         | 0        | 0        | 2,048      |             |             | 0                     | 0        | 0        |             |             |
| Out-of-State                               | 914                     | 1,245        | 1,469        | 18.0%        | 60.7%        | 472                 | 664          | 780          | 17.5%        | 65.3%        | 0        | 0        | 255        |             |             | 0                     | 0        | 0        |             |             |
| <b>Sex</b>                                 |                         |              |              |              |              |                     |              |              |              |              |          |          |            |             |             |                       |          |          |             |             |
| Male                                       | 4,294                   | 3,729        | 4,265        | 14.4%        | -0.7%        | 2,329               | 2,238        | 2,551        | 14.0%        | 9.5%         | 0        | 0        | 994        |             |             | 0                     | 0        | 0        |             |             |
| Female                                     | 6,510                   | 5,521        | 6,048        | 9.5%         | -7.1%        | 3,918               | 3,761        | 4,030        | 7.2%         | 2.9%         | 0        | 0        | 1,309      |             |             | 0                     | 0        | 0        |             |             |
| <b>Race/Ethnicity<sup>4</sup></b>          |                         |              |              |              |              |                     |              |              |              |              |          |          |            |             |             |                       |          |          |             |             |
| Hispanic/Latino                            | 642                     | 642          | 797          | 24.1%        | 24.1%        | 319                 | 416          | 496          | 19.2%        | 55.5%        | 0        | 0        | 157        |             |             | 0                     | 0        | 0        |             |             |
| Afr.-Amer.                                 | 1,494                   | 1,502        | 1,712        | 14.0%        | 14.6%        | 555                 | 651          | 676          | 3.8%         | 21.8%        | 0        | 0        | 189        |             |             | 0                     | 0        | 0        |             |             |
| Am. Indian                                 | 17                      | 11           | 15           | 26.4%        | -11.8%       | 1                   | 5            | 8            | 60.0%        | 700.0%       | 0        | 0        | 0          |             |             | 0                     | 0        | 0        |             |             |
| Asian                                      | 270                     | 232          | 324          | 39.7%        | 20.0%        | 196                 | 180          | 249          | 38.3%        | 27.0%        | 0        | 0        | 84         |             |             | 0                     | 0        | 0        |             |             |
| Hawaiian/Pacific Isl.                      | 12                      | 5            | 1            | -80.0%       | -91.7%       | 7                   | 2            | 1            | -50.0%       | -85.7%       | 0        | 0        | 0          |             |             | 0                     | 0        | 0        |             |             |
| Two or More Races                          | 402                     | 391          | 541          | 38.4%        | 34.6%        | 206                 | 256          | 375          | 46.5%        | 82.0%        | 0        | 0        | 126        |             |             | 0                     | 0        | 0        |             |             |
| <b>Total US Students of Color</b>          | <b>2,837</b>            | <b>2,783</b> | <b>3,390</b> | <b>21.8%</b> | <b>19.5%</b> | <b>1,284</b>        | <b>1,510</b> | <b>1,805</b> | <b>19.5%</b> | <b>40.6%</b> | <b>0</b> | <b>0</b> | <b>556</b> |             |             | <b>0</b>              | <b>0</b> | <b>0</b> |             |             |
| US White                                   | 7,373                   | 5,953        | 6,340        | 6.5%         | -14.0%       | 4,661               | 4,273        | 4,517        | 5.7%         | -3.1%        | 0        | 0        | 1,582      |             |             | 0                     | 0        | 0        |             |             |
| Other/Unknown                              | 250                     | 53           | 75           | 41.5%        | -70.0%       | 150                 | 33           | 46           | 39.4%        | -69.3%       | 0        | 0        | 18         |             |             | 0                     | 0        | 0        |             |             |
| International                              | 347                     | 461          | 508          | 10.2%        | 46.4%        | 152                 | 183          | 213          | 16.4%        | 40.1%        | 0        | 0        | 147        |             |             | 0                     | 0        | 0        |             |             |
| <b>Indiana HS Diploma Type<sup>2</sup></b> |                         |              |              |              |              |                     |              |              |              |              |          |          |            |             |             |                       |          |          |             |             |
| Acad. Honors                               | 4,445                   | 3,555        | 4,128        | 16.1%        | -7.1%        | 3,823               | 3,313        | 3,913        | 18.1%        | 2.4%         | 0        | 0        | 1,314      |             |             | 0                     | 0        | 0        |             |             |
| Core 40 Technical                          | 21                      | 28           | 60           | 114.3%       | 185.7%       | 9                   | 12           | 35           | 191.7%       | 288.9%       | 0        | 0        | 14         |             |             | 0                     | 0        | 0        |             |             |
| Core 40                                    | 4,496                   | 3,434        | 3,617        | 5.3%         | -19.6%       | 1,838               | 1,854        | 1,719        | -7.3%        | -6.5%        | 0        | 0        | 662        |             |             | 0                     | 0        | 0        |             |             |
| GED  | 114                     | 102          | 87           | -14.7%       | -23.7%       | 35                  | 34           | 22           | -35.3%       | -37.1%       | 0        | 0        | 10         |             |             | 0                     | 0        | 0        |             |             |

1 - Enrolled indicates registered for classes for the fall semester. Enrollment figures are currently insignificant and are not being displayed.

2 - Mutually exclusive diploma type

3 - Applicants with undetermined residency are classified based on their home address.

4 - Beginning with the 2010 class, applicants indicate their race/ethnicity using new federally mandated categories that a) collect multiple races that include White and exclude Hispanics under "Two or More Races," b) allow the Hispanic category to trump other categories, and c) separate the former category of Asian/Pacific Islander into two categories.

5 - The 2010 applicant and admit counts include beginners (4,235) who applied during College Go Week, October 12-16, 2009. This initiative inflated the counts of applicants and admits making comparisons to other years tenuous.



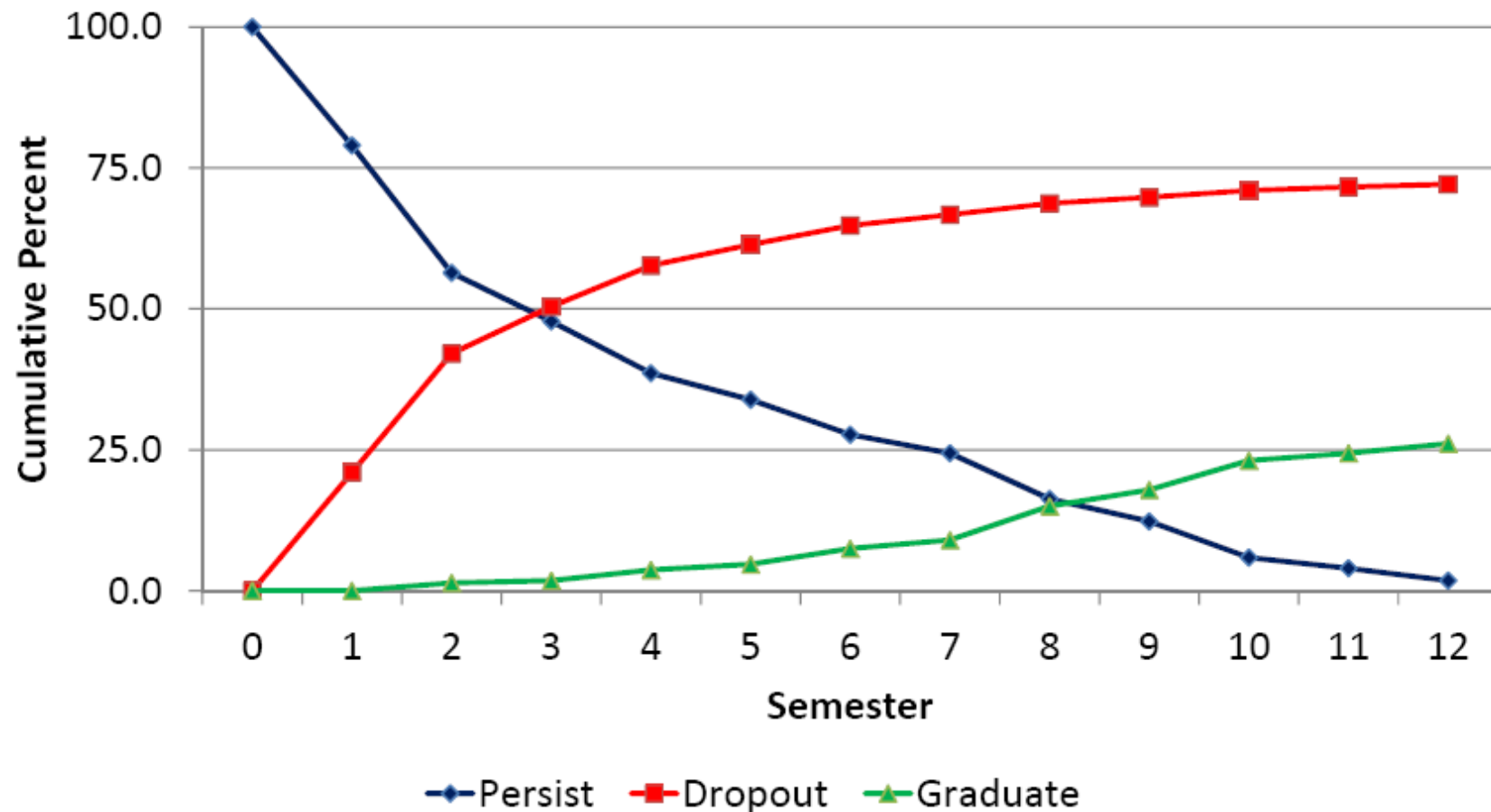
## Deposit Update for Fall 2012 Freshmen

Prepared by Chris J. Foley, Director of Undergraduate Admissions  
May 2012

|  | Fall 2011<br>Intents to<br>Enroll |               | Fall 2012<br>Enrollment<br>Deposits |               |
|--|-----------------------------------|---------------|-------------------------------------|---------------|
|  | N                                 | % of<br>Total | N                                   | % of<br>Total |
| Total  | 2722                              |               | 2677                                |               |
| African American*                                    | 385                               | 14.1%         | 249                                 | 9.3%          |
| Hispanic/Latino*                                     | 199                               | 7.3%          | 202                                 | 7.5%          |
| Asian*   | 97                                | 3.6%          | 98                                  | 3.7%          |
| Multi-Racial*  | --                                | --            | 160                                 | 6.0%          |
| Non-Resident   | 111                               | 4.1%          | 128                                 | 4.8%          |
| Academic Honors                                      | 1256                              | 46.1%         | 1470                                | 54.9%         |
| 21st Century   | 418                               | 15.4%         | 436                                 | 16.3%         |
| 1st Gen  | 1586                              | 58.3%         | 1449                                | 54.1%         |
| Average SAT (CR+MA)                                  | 1000                              | --            | 1023                                | --            |
| Average HS Rank %-tile                               | 70                                | --            | 72                                  | --            |
| Average GPA  | 3.23                              | --            | 3.32                                | --            |
| * Ethnicity for 2011 uses old ethnic/race categories |                                   |               |                                     |               |

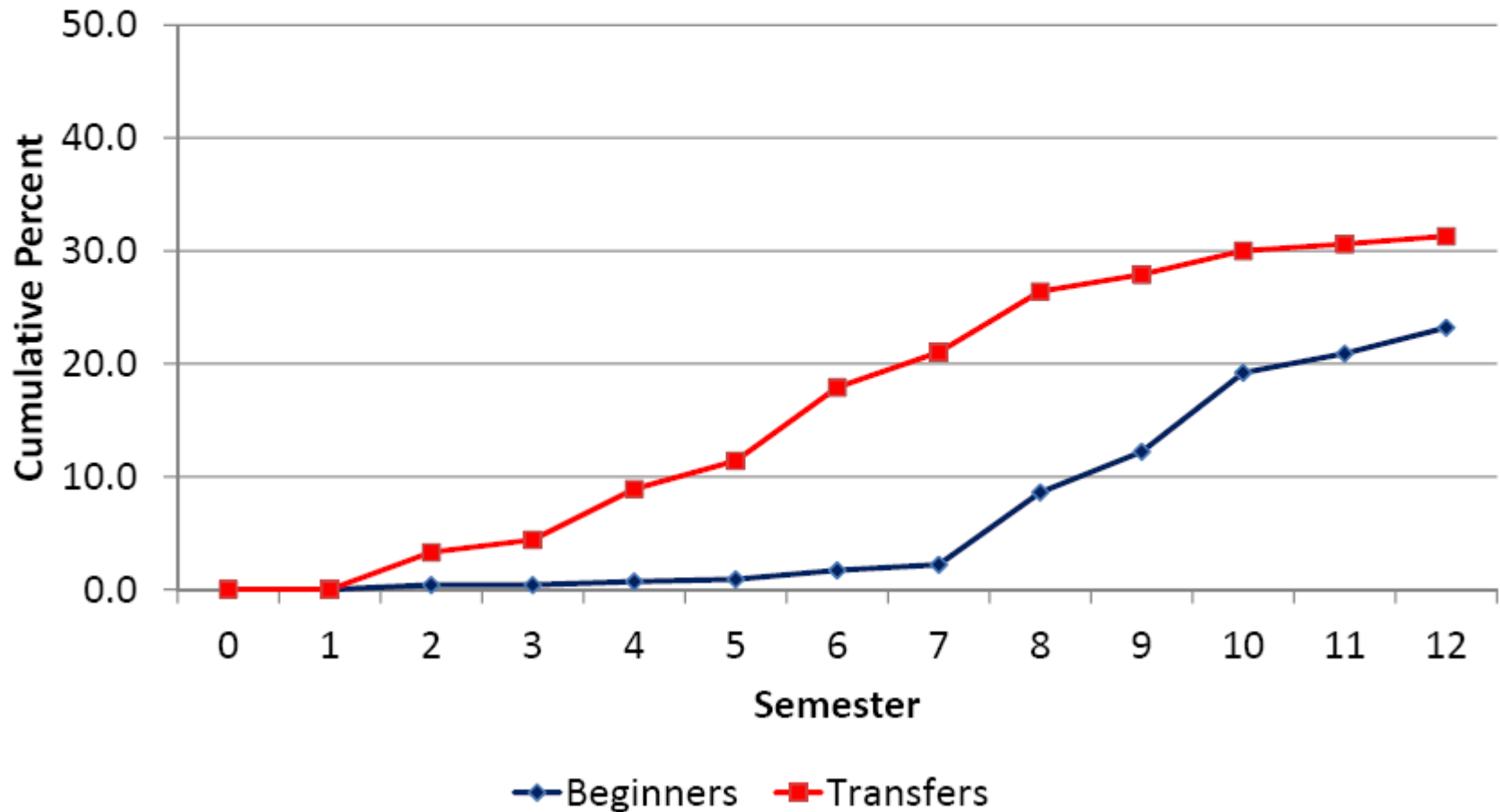
|   |                                | 2012        |             |            | 2011                         |                   |              |
|---|--------------------------------|-------------|-------------|------------|------------------------------|-------------------|--------------|
|   |                                | Admits      | Deposits    | Yield      | Admits                       | Intents to Enroll | Yield        |
| <b>Grand Total</b>                              |                                | <b>6314</b> | <b>2677</b> | <b>42%</b> | <b>5810</b>                  | <b>2687</b>       | <b>46%</b>   |
| <b>SAT Range</b>                                | Less than 900                  | 1144        | 574         | 50%        | 1186                         | 687               | 58%          |
|   | 900-999                        | 1557        | 686         | 44%        | 1387                         | 665               | 48%          |
|   | 1000-1199                      | 2521        | 978         | 39%        | 2347                         | 987               | 42%          |
|   | 1200-1299                      | 563         | 223         | 40%        | 471                          | 178               | 38%          |
|   | 1300+                          | 469         | 188         | 40%        | 338                          | 121               | 36%          |
|   | Score Undetermined             | 60          | 28          | 47%        | 81                           | 49                | 60%          |
| <b>Scholarships Offered</b>                     | Academic Honors Scholarship    | 316         | 108         | 34%        |                              |                   |              |
|   | Chancellor Scholarship Lv1     | 51          | 22          | 43%        |                              |                   |              |
|   | Chancellor Scholarship Lv2     | 9           | 5           | 56%        |                              |                   |              |
|   | Chancellor Scholarship Lv3     | 340         | 162         | 48%        | Chancellor's Overall         |                   |              |
|   | Chancellor Scholarship Lv4     | 85          | 19          | 22%        | 43%                          |                   |              |
|   | Dean of Faculties Scholarship  | 278         | 105         | 38%        |                              |                   |              |
|   | Dean's Recognition Scholarship | 42          | 7           | 17%        |                              |                   |              |
|   | IUPUI Service Award-Level 1    | 75          | 16          | 21%        |                              |                   |              |
|   | IUPUI Service Award-Level 2    | 52          | 10          | 19%        |                              |                   |              |
|   | IUPUI Service Award-Level 3    | 78          | 8           | 10%        |                              |                   |              |
|   | Outstanding GED Scholar        | 3           | 2           | 67%        |                              |                   |              |
|   | Salutatorian Scholarship       | 27          | 15          | 56%        |                              |                   |              |
|   | Valedictorian Scholarship      | 35          | 11          | 31%        | <b>2012 1300+ SAT Scores</b> |                   |              |
|   | (blank)                        | 4923        | 2187        | 44%        | <b>Admits</b>                | <b>Deposits</b>   | <b>Yield</b> |
| <b>Referral Source (First Recorded Contact)</b> | Application                    | 3379        | 1377        | 41%        | 207                          | 74                | 36%          |
|   | Business Fair                  | 15          | 7           | 47%        | 0                            | 0                 | ....         |
|   | Campus Event                   | 94          | 49          | 52%        | 6                            | 1                 | 17%          |
|   | College Fair                   | 84          | 38          | 45%        | 5                            | 1                 | 20%          |
|   | College Visit                  | 55          | 26          | 47%        | 2                            | 1                 | 50%          |
|   | Drop-In (In-Person)            | 10          | 7           | 70%        | 3                            | 3                 | 100%         |
|   | Off Campus Event               | 12          | 6           | 50%        | 0                            | 0                 | ....         |
|   | Other Referral                 | 435         | 156         | 36%        | 45                           | 17                | 38%          |
|   | School Visit                   | 14          | 9           | 64%        | 1                            |                   | 0%           |
|   | Test Scores                    | 1640        | 747         | 46%        | 171                          | 78                | 46%          |
|   | Web Inquiry                    | 280         | 121         | 43%        | 13                           | 7                 | 54%          |
|   | (blank)                        | 296         | 134         | 45%        | 16                           | 6                 | 38%          |
| <b>Ethnicity/Race</b>                           | African American               | 658         | 249         | 38%        | 5                            | 3                 | 60%          |
|   | American Indian                | 8           | 2           | 25%        | 0                            | 0                 | ....         |
|   | Asian                          | 236         | 98          | 42%        | 40                           | 7                 | 18%          |
|   | Ethnicity Undetermined         | 7           | 2           | 29%        | 3                            | 1                 | 33%          |
|   | Hispanic/Latino                | 473         | 202         | 43%        | 9                            | 2                 | 22%          |
|   | Multiracial                    | 391         | 160         | 41%        | 27                           | 11                | 41%          |
|   | Not Applicable (Alien)         | 38          | 20          | 53%        | 6                            | 1                 | 17%          |
|   | Pacific Islander               | 1           | 0           | 0%         | 0                            | 0                 | ....         |
|   | White                          | 4502        | 1944        | 43%        | 379                          | 163               | 43%          |

## Persistence, Dropout, & Graduation Rates for the Fall 1999 – Fall 2005 Entering Cohorts<sup>†</sup>

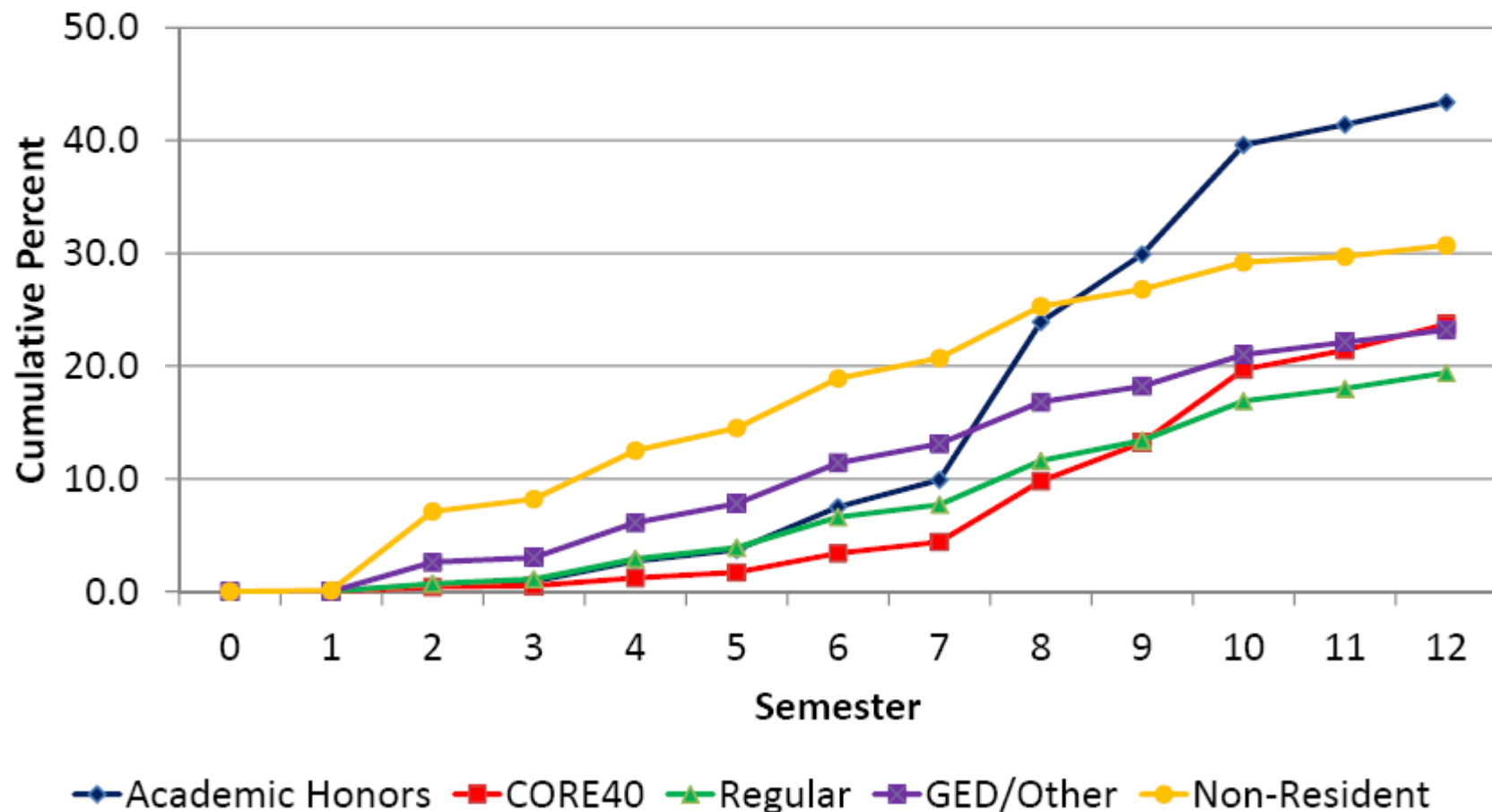


<sup>†</sup>Includes both new beginners and new transfers.

# Graduation Rates for New IUPUI Students by Beginners/Transfers

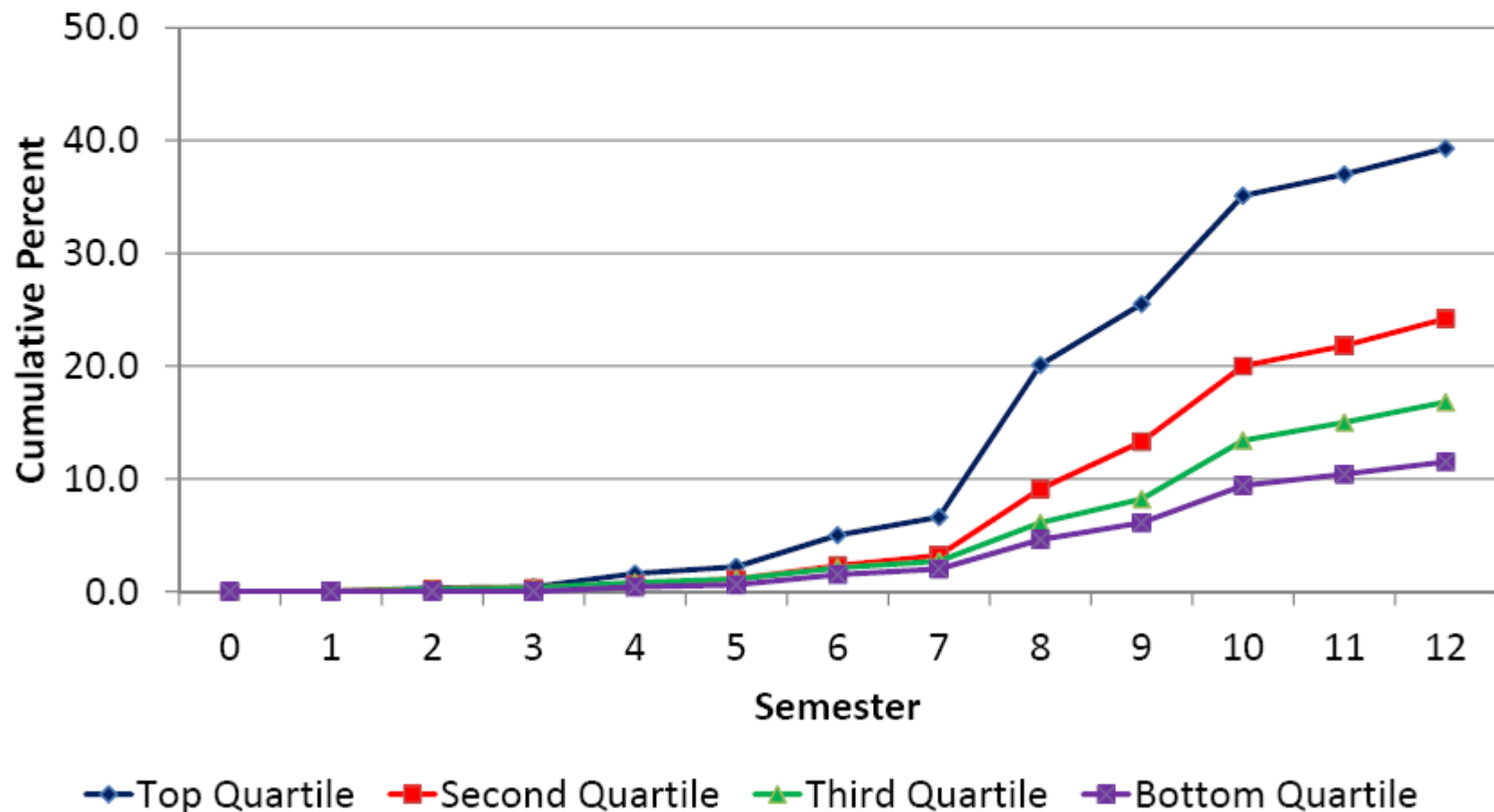


# Graduation Rates for New IUPUI Students by Diploma Type





# Graduation Rates for NEW IUPUI Students by High School Percentile Rank Quartiles



**Enrollment and Graduation Outcomes for New IUPUI Students 1999-2005 (All Students)**

| Semester | Beginning Enrollment | Persist to Next Semester | Percent of Cohort | Dropped Out | Percent of Cohort | Cumulative Percent of Cohort | Graduated | Percent of Cohort | Cumulative Percent of Cohort |
|----------|----------------------|--------------------------|-------------------|-------------|-------------------|------------------------------|-----------|-------------------|------------------------------|
| 1        | 32,371               | 25,566                   | 79.0%             | 6,801       | 21.0%             | 21.0%                        | 4         | 0.0%              | 0.0%                         |
| 2        | 25,566               | 18,272                   | 56.4%             | 6,835       | 21.1%             | 42.1%                        | 459       | 1.4%              | 1.4%                         |
| 3        | 18,272               | 15,474                   | 47.8%             | 2,669       | 8.2%              | 50.4%                        | 129       | 0.4%              | 1.8%                         |
| 4        | 15,474               | 12,502                   | 38.6%             | 2,371       | 7.3%              | 57.7%                        | 601       | 1.9%              | 3.7%                         |
| 5        | 12,502               | 10,970                   | 33.9%             | 1,204       | 3.7%              | 61.4%                        | 328       | 1.0%              | 4.7%                         |
| 6        | 10,970               | 8,959                    | 27.7%             | 1,094       | 3.4%              | 64.8%                        | 917       | 2.8%              | 7.5%                         |
| 7        | 8,959                | 7,887                    | 24.4%             | 611         | 1.9%              | 66.7%                        | 461       | 1.4%              | 9.0%                         |
| 8        | 7,887                | 5,282                    | 16.3%             | 648         | 2.0%              | 68.7%                        | 1,957     | 6.0%              | 15.0%                        |
| 9        | 5,282                | 3,974                    | 12.3%             | 374         | 1.2%              | 69.8%                        | 934       | 2.9%              | 17.9%                        |
| 10       | 3,974                | 1,913                    | 5.9%              | 380         | 1.2%              | 71.0%                        | 1,681     | 5.2%              | 23.1%                        |
| 11       | 1,913                | 1,282                    | 4.0%              | 199         | 0.6%              | 71.6%                        | 432       | 1.3%              | 24.4%                        |
| 12       | 1,282                | 581                      | 1.8%              | 143         | 0.4%              | 72.1%                        | 555       | 1.7%              | 26.1%                        |

Source: IMIR Kaplan Meier Tables 5/12

## Predicted Graduation Rates for Indiana Residents & All First-Time Freshmen

|        | Indiana Residents |       |       |        | All Beginners |       |       |        |
|--------|-------------------|-------|-------|--------|---------------|-------|-------|--------|
| Cohort | Persist           | Grad4 | Grad5 | Grad 6 | Persist       | Grad4 | Grad5 | Grad 6 |
| 1997   |                   |       |       |        | 52.2          | 5.8   | 16.5  | 22.8   |
| 1998   |                   |       |       |        | 50.7          | 5.9   | 16.4  | 22.3   |
| 1999   | 58.7              | 7.1   | 18.8  | 25.5   | 52.4          | 7.3   | 19.2  | 25.9   |
| 2000   | 61.5              | 7.5   | 20.6  | 27.3   | 55.0          | 7.7   | 20.7  | 27.5   |
| 2001   | 65.5              | 8.9   | 24.7  | 31.1   | 58.8          | 9.3   | 25.4  | 31.6   |
| 2002   | 67.7              | 9.7   | 24.5  | 31.6   | 60.9          | 9.9   | 24.6  | 31.8   |
| 2003   | 65.9              | 10.3  | 26.3  | 34.4   | 60.8          | 10.2  | 26.3  | 34.4   |
| 2004   | 65.6              | 10.8  | 26.6  | 34.0   | 65.5          | 11.1  | 26.8  | 34.2   |
| 2005   | 63.6              | 10.3  | 25.3  | 32.4   | 63.6          | 10.6  | 25.6  | 32.7   |
| 2006   | 65.7              | 13.4  | 30.1  | 32.4   | 65.9          | 13.4  | 30.5  | 36.0   |
| 2007   | 67.2              | 14.9  | 27.4  | 33.8   | 67.7          | 15.1  | 30.4  | 37.5   |
| 2008   | 72.0              | 14.8  | 32.0  | 38.1   | 72.1          | 15.5  | 33.9  | 41.1   |
| 2009   | 74.0              | 16.0  | 33.9  | 40.0   | 73.8          | 16.3  | 35.3  | 42.5   |
| 2010   | 72.1              | 14.9  | 32.1  | 38.2   | 71.8          | 15.4  | 33.7  | 40.9   |
| 2011   |                   |       |       |        |               |       |       |        |
| 2012   |                   |       |       |        |               |       |       |        |
| 2013   |                   |       |       |        |               |       |       |        |
| 2014   |                   |       |       |        |               |       |       |        |

Source: IMIR 4/4/2012

## **ICHE Metrics that Matter**

### **COMPLETION**

1. Degree Completion: Percentage change in total degrees conferred. For two-year campuses, includes one-year certificates and associate degrees. For four-year campuses, includes bachelor's, master's and doctorate degrees.
2. Remediation Success: Percentage of entering undergraduate students who complete first-year, college-level English and math courses.
3. Student Persistence: Percentage of entering two-year college students who complete 15, 30 and 45 credit hours and entering four-year college students who complete 30 and 60 credit hours.

### **PRODUCTIVITY**

1. On-Time Completion: Percentage of on-time degrees earned by resident, undergraduate, first-time, full-time students. Includes associate degrees earned within two years and bachelor's degrees earned within four years.
2. Cost per Degree: Total expenditures per degree conferred, as defined by the Delta Cost Project.
3. Student Debt: Average college debt load of undergraduate students.

### **QUALITY**

1. Learning Outcomes: Comparable institution-level and degree-level reporting of student learning outcomes, as defined by the Voluntary System of Accountability (VSA), Voluntary Framework
2. of Accountability (VFA) or other comparable nationally recognized measure of student learning.
3. Transfer: Percentage of students who successfully transfer from a two-year college to a four-year college and earn a bachelor's degree within four years.
4. Return on Investment: Comparable institution-level and degree-level reporting that includes graduates' job placement rates, licensure rates and average annual earnings.

Source: [\*Reaching Higher, Achieving More\*](#) (ICHE, March 2012)

## 2013-15 Performance Funding Metrics

For the 2013-15 budget development process, the Commission recommends the following metrics for the performance formula.

### Completion Metrics

- **Overall Degree Completion** – Resident only students. Includes 1 year certificates, associate degrees, bachelor degrees, masters degrees and doctoral degrees. This metric would be open to all institutions.
- **At Risk Student Degree Completion** – Resident only students. Includes 1 year certificates, associate degrees and bachelor degrees. Applies if the student graduating with the degree is a Pell recipient at the time of graduation. The metric would be open to all institutions.
- **High Impact Degree Completion** – Resident only students. Includes bachelor degrees, masters degrees and doctoral degrees in STEM related fields. STEM is defined as Science, Technology, Engineering and Mathematics based on national standards. Only research campuses would be open to this metric, IUB, IUPUI, PUWL and BSU.

### Progress Metrics

- **Student Persistence Incentive** - Resident only students. Provides an incentive if a student successfully completes a set number of credit hours at an institution. Would provide an incentive at the 2 year institutions for students meeting 15, 30 and 45 credit hours, and at 4 year non-research campuses 30 and 60 credit hours. The metric would be open to those non-research campuses, Ivy Tech, Vincennes, USI, ISU, PUC, PUNC, IPFW, IUE, IUK, IUSB, IUS, and IUE.
- **Remediation Success Incentive** – Resident only students. Provides an incentive to the 2 year institutions for students who successfully complete a remediation course and then successfully complete a gateway college level course. Would apply only to those courses in math and science. The metric would be open to Ivy Tech and Vincennes.

### Productivity Metrics

- **On-Time Graduation Rate** – Resident only students, first time, full time. Provides an incentive for improvement in the on-time graduation rate at 4 and 2 year institutions. On-time graduation rate is considered 4 years for 4 year institutions and 2 years for 2 year institutions.
- **Institutional Defined Productivity Metric** – This metric would be selected by each institution and submitted to the COMMISSION for approval. The metric would need to align with the strategic plan of the institution and focus on reducing the cost of attendance to the student. The metric will differ by each institution but is geared to rewarding an institution for improving productivity in some manner

Source: [http://www.in.gov/che/files/DecD\\_Performance\\_Formula\\_Metrics.pdf](http://www.in.gov/che/files/DecD_Performance_Formula_Metrics.pdf) (Approved 2/12)



# IUPUI Undergraduate Enrollment by School by Semester<sup>a</sup>

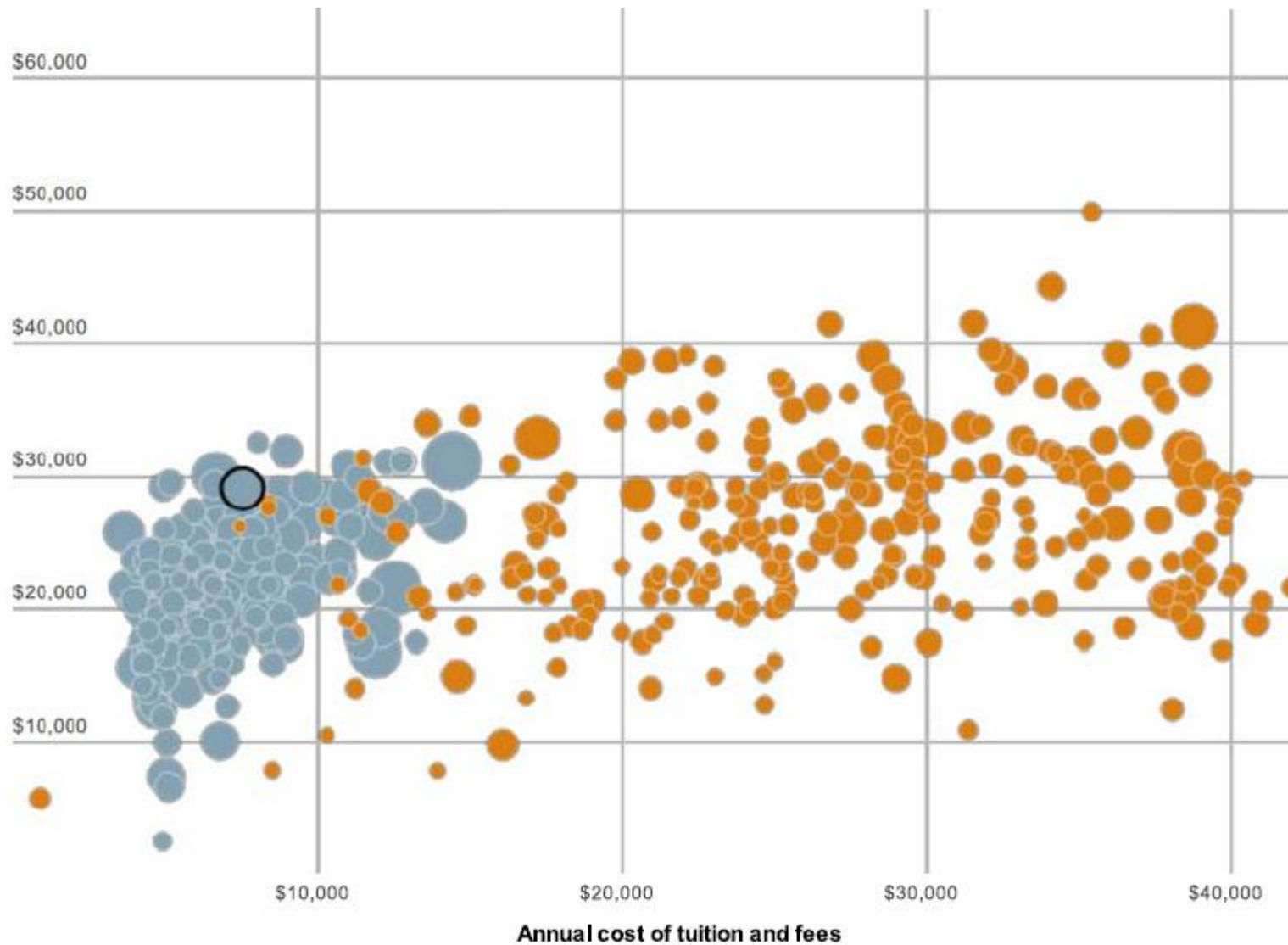
| School                                      | Academic Year |         |         |         |         |                  |         |         |         |         |
|---|---------------|---------|---------|---------|---------|------------------|---------|---------|---------|---------|
|   | 2002-03       | 2003-04 | 2004-05 | 2005-06 | 2006-07 | 2007-08          | 2008-09 | 2009-10 | 2010-11 | 2011-12 |
| <b>Columbus Campus</b>                      |               |         |         |         |         |                  |         |         |         |         |
| Fall  | 1,370         | 1,339   | 1,236   | 1,298   | 1,375   | 1,469            | 1,453   | 1,555   | 1,581   | 1,656   |
| Spring                                      | 1,339         | 1,221   | 1,199   | 1,236   | 1,285   | 1,342            | 1,403   | 1,402   | 1,497   | 1,512   |
| <b>Continuing Studies</b>                   |               |         |         |         |         |                  |         |         |         |         |
| Fall  | 1,138         | 1,125   | 1,152   | 1,173   | 1,048   | 975              | 985     | 975     | 964     | 901     |
| Spring                                      | 1,180         | 1,117   | 1,157   | 1,118   | 1,020   | 939              | 1,011   | 965     | 943     | 915     |
| <b>Dentistry</b>                            |               |         |         |         |         |                  |         |         |         |         |
| Fall  | 131           | 138     | 143     | 142     | 138     | 152              | 143     | 145     | 149     | 139     |
| Spring                                      | 127           | 137     | 133     | 137     | 128     | 141              | 145     | 136     | 140     | 131     |
| <b>Education</b>                            |               |         |         |         |         |                  |         |         |         |         |
| Fall  | 1,156         | 1,160   | 1,160   | 1,107   | 1,113   | 1,056            | 1,052   | 1,078   | 1,005   | 913     |
| Spring                                      | 1,080         | 1,133   | 1,044   | 1,069   | 1,052   | 1,057            | 1,010   | 1,019   | 906     | 817     |
| <b>Engineering and Technology</b>           |               |         |         |         |         |                  |         |         |         |         |
| Fall  | 2,426         | 2,455   | 2,350   | 2,212   | 2,142   | 2,252            | 2,323   | 2,419   | 2,464   | 2,435   |
| Spring                                      | 2,313         | 2,310   | 2,135   | 2,018   | 2,022   | 2,103            | 2,229   | 2,286   | 2,374   | 2,314   |
| <b>Health &amp; Rehabilitation Sciences</b> |               |         |         |         |         |                  |         |         |         |         |
| Fall  | 115           | 67      | 12      | 10      | 3       |                  |         |         | 17      | 108     |
| Spring                                      | 112           | 73      | 8       | 7       | 1       |                  |         |         | 27      | 134     |
| <b>Herron School of Art and Design</b>      |               |         |         |         |         |                  |         |         |         |         |
| Fall  | 734           | 774     | 810     | 803     | 833     | 846              | 872     | 896     | 862     | 833     |
| Spring                                      | 738           | 769     | 786     | 831     | 799     | 831              | 844     | 864     | 835     | 769     |
| <b>Informatics</b>                          |               |         |         |         |         |                  |         |         |         |         |
| Fall  | 406           | 457     | 477     | 490     | 493     | 513              | 528     | 540     | 532     | 545     |
| Spring                                      | 463           | 438     | 474     | 463     | 456     | 516              | 554     | 506     | 512     | 545     |
| <b>Journalism</b>                           |               |         |         |         |         |                  |         |         |         |         |
| Fall  | 56            | 65      | 75      | 96      | 169     | 156              | 172     | 184     | 185     | 192     |
| Spring                                      | 62            | 62      | 81      | 96      | 163     | 141              | 165     | 208     | 177     | 156     |
| <b>Kelley School of Business</b>            |               |         |         |         |         |                  |         |         |         |         |
| Fall  | 1,012         | 1,105   | 943     | 999     | 976     | 988              | 1,042   | 1,068   | 1,133   | 1,098   |
| Spring                                      | 1,064         | 1,116   | 1,039   | 948     | 963     | 983              | 1,029   | 1,101   | 1,121   | 1,074   |
| <b>Liberal Arts</b>                         |               |         |         |         |         |                  |         |         |         |         |
| Fall  | 1,416         | 1,472   | 1,566   | 1,576   | 1,600   | 1,581            | 1,627   | 1,683   | 1,789   | 1,774   |
| Spring                                      | 1,385         | 1,411   | 1,487   | 1,526   | 1,511   | 1,543            | 1,557   | 1,616   | 1,757   | 1,693   |
| <b>Medicine</b>                             |               |         |         |         |         |                  |         |         |         |         |
| Fall  | 268           | 258     | 276     | 265     | 286     | 293              | 459     | 444     | 442     | 449     |
| Spring                                      | 265           | 257     | 267     | 281     | 284     | 437 <sup>b</sup> | 437     | 448     | 452     | 452     |
| <b>Nursing</b>                              |               |         |         |         |         |                  |         |         |         |         |
| Fall  | 973           | 1,008   | 842     | 859     | 889     | 974              | 1,030   | 1,053   | 992     | 959     |
| Spring                                      | 1,010         | 943     | 809     | 820     | 958     | 992              | 1,049   | 1,056   | 1,009   | 929     |
| <b>Physical Edu and Tourism Mgmt.</b>       |               |         |         |         |         |                  |         |         |         |         |
| Fall  | 468           | 492     | 590     | 708     | 855     | 866              | 895     | 914     | 986     | 901     |
| Spring                                      | 461           | 525     | 622     | 749     | 808     | 887              | 910     | 904     | 918     | 834     |
| <b>Public and Environmental Affairs</b>     |               |         |         |         |         |                  |         |         |         |         |
| Fall  | 561           | 571     | 637     | 627     | 612     | 572              | 384     | 421     | 461     | 527     |
| Spring                                      | 543           | 565     | 595     | 596     | 580     | 385 <sup>b</sup> | 366     | 406     | 459     | 483     |
| <b>Science</b>                              |               |         |         |         |         |                  |         |         |         |         |
| Fall  | 1,380         | 1,336   | 1,371   | 1,539   | 1,573   | 1,598            | 1,728   | 1,861   | 2,016   | 2,024   |
| Spring                                      | 1,307         | 1,338   | 1,335   | 1,488   | 1,519   | 1,534            | 1,664   | 1,803   | 1,882   | 2,018   |
| <b>Social Work</b>                          |               |         |         |         |         |                  |         |         |         |         |
| Fall  | 143           | 141     | 158     | 146     | 135     | 145              | 132     | 158     | 175     | 198     |
| Spring                                      | 146           | 149     | 150     | 153     | 143     | 135              | 142     | 151     | 186     | 228     |
| <b>University College</b>                   |               |         |         |         |         |                  |         |         |         |         |
| Fall  | 7,357         | 7,492   | 7,418   | 7,429   | 6,994   | 6,831            | 6,634   | 6,778   | 6,555   | 6,625   |
| Spring                                      | 6,572         | 6,621   | 6,392   | 6,331   | 6,055   | 5,896            | 5,918   | 6,065   | 5,951   | 5,860   |

## Notes:

<sup>a</sup> Source: Point in Cycle database

<sup>b</sup> Public Health moved from Public and Environmental Affairs to Medicine in 2008

## Average Student Debt for 2010 Graduates at Institutions with 51-75% of Graduates Carrying Debt



IUPUI appears as **O**

IUPUI Average Student Debt for 2010 Graduates: \$29,112. 73% of 2010 IUPUI graduates carried debt.

Public Institutions Private Institutions

Circles sized by number of enrolled students

Source: 5/13/2012 [New York Times](#)