

# FFA NEWSLETTER

## Alumni Association



WINTER - 1988

SPONSORED BY: RHONE-POULENC INC., AGROCHEMICAL DIVISION

### RHONE-POULENC INC. SPONSORS NEWSLETTER

The FFA Alumni Newsletter is sponsored by the Agrochemical Division of Rhone-Poulenc Inc. as a special project of the National FFA Foundation for the fourth consecutive year. The sponsorship provides approximately one-half of the cost of mailing and printing the four issues. Rhone-Poulenc Inc. is the manufacturer of BUCTRIL herbicide and MOCAP insecticide and other fine Agrochemicals.

### 1988 NATIONAL PRESIDENT IS RICK METZGER



Rick Metzger, Ohio is pictured receiving the National President's gavel from past president Larry Reese, Florida. Rick Metzger is Director of Sales and Marketing for Seedex Distributors, Waterville, Ohio.

### COUNCIL ELECTION RESULTS

James Sipiorski, Wisconsin was elected National Vice President and Josiah Phelps, Georgia was elected by the Delegates for a three-year term on the National FFA Alumni Council as the Member-at-Large representative.

### ALUMNI SUPPORTS YOUNG FARMERS

The National Young Farmer Education Association held its annual Institute in Peoria, Illinois in December. The FFA program was presented by Robert W. Zol, National FFA Alumni Executive Director. The FFA Alumni Association has supported the FFA Institute for eight consecutive years. This year a total of \$850.00 was contributed.

### STATE FFA ALUMNI PRESIDENTS CONFERENCE

State FFA Alumni presidents and FFA Alumni leaders are invited to attend the second annual FFA Alumni State Leaders Conference to be held in Washington, D.C. the last week of July. Philip Morris, Inc., as a special project of the FFA Foundation, sponsored the first workshop in 1987 and has indicated a desire to continue their sponsorship. Local FFA Alumni leaders interested in attending should contact their state FFA Alumni president or the National Office. More information will be included in the Spring Newsletter.

### MASTERCARD AND VISA CARD PROGRAM

Information on the FFA Alumni MasterCard and VISA Card has been mailed to all FFA Alumni members. This new MasterCard will carry the FFA Alumni emblem, provide great benefits to FFA Alumni that participate, and the National FFA Alumni will receive one-half percent of every charge on the card and \$1.00 for every card issued. For more information on this program contact the National Office.

### MEMBERSHIP RECORD SET IN 1987

The FFA Alumni membership for 1987 has reached another record of 29,564. The FFA Alumni membership has grown every year since chartering in 1972. The membership increased 2,174 members in 1987, 1987.

### 1987 OUTSTANDING FFA ALUMNI AFFILIATE ACTIVITIES

The following activities were accomplished by our eight 1987 Gold Emblem affiliates. These are proven support activities that can be conducted by any local affiliate. The Gold Emblem affiliates' memberships ranged from 17 to 446 active Alumni members this year.

1. Provided special leadership workshop for training session of local FFA officers.
2. Alumni cooperated with FFA Chapter in planning and carrying out State Safety Banquet for over 400 persons.
3. Assisted with training teams for leadership and skill contests.
4. Assisted FFA Chapter with transportation of animals and supervision for trip to nursing home for mentally disabled.
5. Sponsored and coached an FFA basketball team.
6. Purchased a sign for Chapter's animal science building.
7. Assisted FFA members with hay lift for drought-stricken farmers.
8. Sponsored swine and sheep show and sale with 39 FFA members participating.
9. Conducted annual crop show for FFA members.
10. All sophomore, juniors, and seniors are interviewed individually by Alumni with the top FFA members receiving awards.

## FFA ALUMNI SALUTES THE EXECUTIVE SPONSORS

Since our Fall 1987 Newsletter, the following have contributed \$100.00 or more as Executive Sponsors of the FFA. The number of years of contributions is listed in parentheses. We encourage each Alumni to become an Executive Sponsor. For information, write the National FFA Alumni office.

### Alabama

Byron Rawls (10)

### Arizona

John G. Salsbury (7)

### California

Lawrence Augenstein (19)

Edward S. Murakami (10)

Clarke A. Nelson (12)

Mrs. Marie Rohmert (11)

John A. Stearns (22)

E. W. Ukkelberg (20)

### Colorado

Carl F. Gerhardt (7)

Donald W. Wittnam (3)

### Connecticut

Rollie Hendrickson (14)

Milan J. Turk (2)

### Delaware

Dale Wolf (8)

### District of Columbia

Gregory Young (10)

### Florida

Gary Bartley (7)

### Georgia

J. Lamar Branch (12)

H. L. Easterbrooks (8)

Jimmy L. Hill (1)

Richard Riley (1)

### Illinois

Nick Babson (2)

Boyd C. Bartlett (14)

Gaylord Donnelley (23)

Alfred F. Kennitz (17)

Paul C. Krouse (10)

Dale Miller (1)

Richard A. Otmsted (1)

Martin B. Shifrin (1)

Westmer FFA Alumni (4)

### Indiana

Robert Book (8)

Joseph L. Downey (6)

Thomas H. Lake (11)

Thomas H. Lake (11)

Harry McDaniel (5)

Greg Slipper (2)

### Iowa

Richard L. Coffey (2)

John R. Hagie (8)

Kenneth Nielsen (4)

R. J. Peterson (1)

Richard Severson (1)

### Kansas

William Harsh (14)

William J. Jensen (9)

Charles D. Johnson (12)

Kevin Lephart (1)

Ronald Wilson (9)

### Kentucky

H. Allen Middleton (2)

### Louisiana

Patrick J. Quinn (6)

### Maryland

Elmer & Dollye Cooper

(6)

John R. Ford (10)

David Miller (4)

J. W. Warren Jr. (8)

### Michigan

Norman A. Brown (2)

John M. Flynn (2)

John Hagaman (4)

Nickolas D. Hein (3)

Richard Karelse (2)

Tim Martinson (6)

Clayton Williams (3)

### Minnesota

Al Baldus (1)

Paul Day (10)

James Ertl (1)

James Howard (7)

### Mississippi

J. L. Harpole (4)

J. H. Moore (2)

### Missouri

Charles Gause (1)

Kenneth E. Guebert (12)

Harold H. Howard (8)

William Kemper (14)

Edward L. McMillan (5)

Eugene Neuwirth (4)

### Montana

Pete Knutson (1)

### New Hampshire

Wentworth Hubbard (8)

### New Jersey

Darryl Fry (1)

### New York

Edward Hartnett (4)

William A. Hiller (4)

Arthur P. Ives (5)

### North Dakota

Eugene R. Dahl (14)

### Ohio

Clayton & Joyce Coffey

(10)

John E. Fisher (4)

Rick L. Metzger (5)

### Oklahoma

Oklahoma FFA Alumni

(8)

Phyllis Sokolosky (10)

Ralph Thomas (2)

### Pennsylvania

Richard Auchincloss (23)

Enos B. Heisey (13)

### Tennessee

Tom Hennessy (2)

J. Carroll Jones (1)

Frank W. O'Donnell (8)

Roy Perkins (1)

### Texas

Charles G. Scruggs (4)

Don Treadway (3)

Joseph W. Van Trump (5)

### Virginia

Ted Amick (4)

M/M Julian Campbell

(10)

Wilson & Betty Cames

(8)

Erika Freeman (5)

M/M Tony Hoyt (7)

Glenn D. Luedke (13)

Duane Nielsen (7)

John Pope (2)

Claud L. Scroggs (17)

McCheyne Swortzel (12)

### Washington

Gary E. Mariani (6)

### West Virginia

W. H. Wayman (9)

### Wisconsin

Timothy Bailey (2)

Dale Beaty (4)

Blackhawk FFA Alumni

(9)

Ruth Booker (1)

Thomas Brettingen (1)

Douglas Butler (5)

Paul Drewek (2)

Royal Fraedrich (1)

Charles Friedel (2)

Wendell Gotman (2)

Ferron & Barb Havens (1)

Kim Havens (8)

Ralph Hawkins (1)

Bruce Herz (1)

Daniel H. Nelson (2)

Gene Pressnall (7)

Scott Sherry (3)

James Sipiorski (2)

Paul A. Weasler (7)

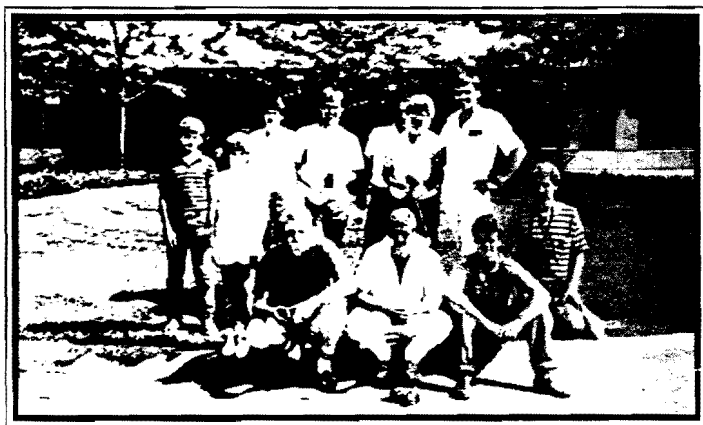
Joseph J. Zadra (5)

## 1988 FFA ALUMNI HOLLAND EXCHANGE

The trip to Holland is an exchange for six individuals from the FFA Alumni and hosted by the Holland Young Farmers Association. The Wisconsin FFA Alumni hosted six Holland Young Farmers this past summer. The FFA Alumni have been invited to send six persons to Holland for a two week visit the first two weeks of August. The tour will feature the Holland dairy industry and all FFA Alumni participants must have dairy expertise.

The exchange agreement calls for our delegation paying all travel costs to and from Holland. All expenses for the two-week trip, including meals, lodging in homes, and travel costs will be provided by the Holland Young Farmers. The travel from New York is estimated to be less than \$700.00. Each participant will need a U.S. Passport.

Applications are due by MAY 1, 1988. A one-page application can be obtained from the National FFA Alumni Office. The six FFA Alumni selected to participate will be notified by May 15.



Pictured are the six Holland Young Farmers and representatives of the Black Wisconsin FFA Alumni Affiliate during the 1987 exchange. The Black Hawk Denmark, Wisconsin Affiliates were responsible for hosting and planning the exchange for our Holland Young Farmer visitors.

## ALUMNI ATTEMPTS TO SEND ONLY ONE COPY OF NEWSLETTER PER HOME

In an attempt to save on mailing and printing expenses, a computer program, developed last year, has allowed us to mail only one copy to each address. The computer matches last names and addresses, with only one member per address being selected to receive the newsletter. On postal routes the computer program cannot make these matches accurately. If your home still receives multiple copies or if copies are desired for Alumni members that have been omitted, please contact the National FFA Alumni Office.

## STATE GRANTS AVAILABLE

The National FFA Alumni will award four (4) state grants, worth \$500.00 each, to State FFA Alumni Associations for use in initiating programs to benefit vocational agriculture education. All proposals from state FFA Alumni must be mailed to the National Office by February 15, 1988. Proposals should include a description of the project and a proposed budget. Proposals must not be more than two pages in length. A state will be awarded only one grant in 1988 but may submit as many proposals as desired.

# 1987 FFA ALUMNI CONVENTION PROCEEDINGS

NOVEMBER 1987

## FFA ALUMNI CONVENTION

The National FFA Alumni Convention Proceedings are published as part of the Winter Newsletter so that all FFA Alumni members can share in the convention highlights. The Convention was held in Kansas City, Missouri, on November 11 with over 600 persons attending.



Pictured from left are representatives from Denmark, Wisconsin receiving the first place affiliate award and Bonduel, Wisconsin receiving the second place affiliate award.

## OUTSTANDING AFFILIATE AWARDS

The Outstanding Affiliate Awards were presented to 30 outstanding affiliates. States are allowed to enter one per state, or 20% of the state affiliate contest entries. The national winners are as follows:

### GOLD

Bushnell-Prairie City, Illinois	Buckeye Valley, Ohio
Hopkins, Michigan	Bonduel, Wisconsin
Milan, Missouri	Denmark, Wisconsin
Lakeview, Nebraska	Luxemburg-Casco, Wisconsin

### SILVER

Gilmer County, Georgia	Scottsbluff, Nebraska
Cherryvale, Kansas	South Rowan, North Carolina
Washington, Kansas	Halls, Tennessee
Apollo, Kentucky	Black Hawk, Wisconsin
Homer, Michigan	Mauston, Wisconsin
New Ulm, Minnesota	Omro, Wisconsin

### BRONZE

Suwannee, Florida	Walkersville, Maryland
Delta, Indiana	Red Lodge, Montana
North Polk, Iowa	Norfolk, Nebraska
Clay Center, Kansas	Frederick County, Virginia
Hill City, Kansas	Pomeroy, Washington

## CONVENTION DELEGATES

The number of convention delegates, as established by the Constitution, is determined 30 days prior to the Convention by allowing one person to represent up to 200 active members in each chartered State FFA Alumni Association and one additional delegate for every 200 active members. This year 127 delegates were present out of 140. Listed below is the allowed number of state delegates and the number that were present.

STATE	ALLOWED	PRESENT	STATE	ALLOWED	PRESENT
ALABAMA	0	0	NEBRASKA	6	6
ALASKA	0	0	NEVADA	1	0
ARIZONA	1	0	NEW HAMPSHIRE	0	0
ARKANSAS	1	0	NEW JERSEY	1	1
CALIFORNIA	1	1	NEW MEXICO	1	0
COLORADO	1	1	NEW YORK	1	1
CONNECTICUT	1	0	NORTH CAROLINA	3	2
DELAWARE	0	0	NORTH DAKOTA	1	1
FLORIDA	2	2	OHIO	8	8
GEORGIA	2	2	OKLAHOMA	22	22
HAWAII	0	0	OREGON	1	0
IDAHO	1	1	PENNSYLVANIA	1	1
ILLINOIS	7	5	RHODE ISLAND	0	0
INDIANA	1	1	SOUTH CAROLINA	0	0
IOWA	3	3	SOUTH DAKOTA	1	0
KANSAS	4	4	TENNESSEE	3	3
KENTUCKY	2	2	TEXAS	2	2
LOUISIANA	1	0	UTAH	1	0
MAINE	0	0	VERMONT	0	0
MARYLAND	1	1	VIRGINIA	3	3
MASSACHUSETTS	1	1	WASHINGTON	1	1
MICHIGAN	3	3	WEST VIRGINIA	1	0
MINNESOTA	2	2	WISCONSIN	37	37
MISSISSIPPI	2	2	WYOMING	1	1
Missouri	5	5			
MONTANA	3	3	<b>TOTAL</b>	<b>140</b>	<b>127</b>



Pictured are representatives from our National Gold Emblem Affiliates holding their certificates and plaques.

## DENMARK, WISCONSIN SELECTED 1987 OUTSTANDING AFFILIATE

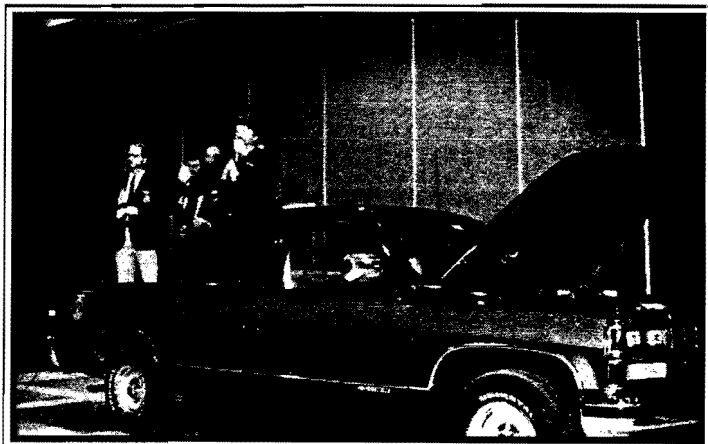
Denmark, Wisconsin won the top FFA Alumni Affiliate award for 1987. They previously won this award in 1978, 1983, and 1984. Some of their outstanding support activities include conducting a one-day Farm Safety Forum for all vocational agriculture students. The FFA Alumni gave the FFA Chapter a new 12-passenger van to drive, and provided over \$1,200.00 in awards for the local FFA activities. The FFA Alumni provided an expense free trip for all FFA members attending the State Convention and \$25.00 for each attending the National Convention. The Alumni also provided \$500.00 for three FFA members to participate in an exchange trip to Holland. The FFA Alumni sponsors an FFA exchange trip with another FFA National Gold Emblem Chapter annually. The FFA Alumni raises money from many sources which includes sponsoring a slow pitch softball tournament, selling bolts and nuts, and oranges and grapefruit. It is impossible to list all the activities of the 493-member affiliate.

## SECOND PLACE NATIONAL AFFILIATE AWARDED TO BONDUEL, WISCONSIN

The Bonduel, Wisconsin FFA Alumni Affiliate was selected as the second place affiliate. This award recognizes the 259 members of the Bonduel FFA Alumni Affiliate. This affiliate sponsored a 44 variety corn test plot for checking plant populations, weed control, disease and insect control, and yield and harvesting losses. The Alumni also organized a Barnyard Olympics for the FFA Alumni members at the county fair. The Alumni raised money for many of the local FFA activities and raised over \$1,000.00 for the state FFA Foundation.

## FFA ALUMNI AUCTION AND BANQUET

The Convention banquet was attended by 250 persons with many more attending the second annual auction. The banquet featured the presentation of several FFA Alumni awards with Rick Malir serving as master of ceremonies. The auction with over 150 items auctioned by Randy Meryer, raised \$20,000.50 for FFA Alumni scholarships and other support activities. A special thanks goes out to all contributors and buyers.



The featured auction item was the Chevrolet pick-up truck donated by Chevrolet Truck Division, General Motor Corporation. The truck was purchased by Frank Rodgers, Jr, for the Rodgers and Son Poll Hereford Farm of Castleford, Idaho. Frank Rodgers is President of the Idaho FFA Alumni. The FFA Alumni will contribute \$1,000.00 to Castleford, Idaho FFA Chapter with the remainder of the \$14,100.00 selling price going to FFA Washington Conference Program Scholarships.

## ED JOHNSON AND LARRY AUGENSTEIN ADDRESS ALUMNI CONVENTION



Ed Johnson of the ABN Agri Broadcasting Network in Ohio gave an excellent keynote address and Larry Augenstein, member of FFA's first National Officer team and presently living in California, brought greetings that included a challenge for all former members to continue supporting the FFA for 60 years as he has.

## SCHOLARSHIPS VALUED AT \$16,500.00

The National FFA Alumni presented 55 scholarships, valued at \$300.00 each, to local and state FFA Alumni to be used by FFA members attending the 1988 Washington Leadership Conference. State FFA Alumni Associations were presented one scholarship for every 500 active Alumni members. Local Alumni affiliates receive a scholarship for every 250 active Alumni members or for 100 Life members. The FFA members will use the \$300.00 scholarship towards the registration fee and will receive a trophy during their attendance of the Conference. The following scholarships were presented:

Florida	1	Oklahoma	9
Georgia	1	Tennessee	1
Illinois	2	Virginia	1
Iowa	1	Wisconsin	15
Kansas	1	Ozark, Missouri	2
Kentucky	1	New Lexington, Ohio	1
Michigan	1	Kingfisher, Oklahoma	1
Missouri	3	Owasso, Oklahoma	1
Montana	1	Rhea County, Tennessee	1
Nebraska	2	Pomeroy, Washington	1
North Carolina	1	Bonduel, Wisconsin	1
Ohio	4	Denmark, Wisconsin	2
		<b>TOTAL</b>	<b>55</b>

## NATIONAL SCRAPBOOK CONTEST

The Pulaski, Wisconsin FFA Alumni Affiliate was selected as the national winner and received a gold emblem rating at the Convention.

## WORK EXPERIENCE ABROAD SCHOLARSHIP PRESENTED

The National FFA Alumni presented the Wisconsin FFA Alumni with a scholarship, valued at \$250.00, to be used by an FFA member participating in the 1988 FFA Work Experience Abroad Program. The scholarship is awarded annually to the state with the most FFA WEA participants. The FFA member is placed with a host family and has the opportunity to learn and work with international agriculture. For information on the WEA programs or other FFA and FFA Alumni international activities, write to the National FFA Alumni Office.

## 1987 LEGION OF MERIT AWARD

The Legion of Merit Award was presented to 203 persons for their outstanding efforts in membership promotion. For receiving this award for three and five consecutive years, a special lapel pin was presented. The number of consecutive years are shown after the name.

### ARKANSAS

Anthony Ashlock

### FLORIDA

Dewie Brewton

Russell Randall

### GEORGIA

Wayne Bameycastle (\*5th)

A. A. Dickerson

Gary Farmer

Scott W. Jones

Jimmy Sales

John K. Wilkinson

### ILLINOIS

Jean McEwen (\*2nd)

### IOWA

Ed Burroughs

Peter Davidshofer

### KANSAS

Art Chapman

Steve St. Clair

Rod Stewart (\*4th)

### KENTUCKY

Jay Jackman

### MICHIGAN

Renee Lenard

Fred McMillen

Jeffrey M. Michalek

Commer Skinner

Dennis R. Williams (\*2nd)

### MINNESOTA

Dawn Schmidke (\*2nd)

### MISSISSIPPI

Donald Stames (\*2nd)

### MISSOURI

Sherry Barber (\*3rd)

Mark Book

Steve Campbell

Shawn Cook (\*3rd)

Dusty Dittmar (\*2nd)

Jerry Doran (\*2nd)

Dee Dee Farnsworth

Chris Forgey (\*2nd)

Paul Hagood (\*3rd)

Cindy Hollis

Jeff House (\*2nd)

June Humphrey

Randi Immon

Tina Johnson

Albert Jones

Mary Jones

Scott Kisse

Gary L. Maricle (\*4th)

Joyce Martin

Brian Meadows

Gerald Meadows

Jim Melton (\*2nd)

Randy G. Miller

Renee Mooney

Paula Roussell (\*2nd)

Phillip Roussell

Joyce E. Sayre (\*3rd)

Mickey Spickard (\*2nd)

Johnnie Starnes

Randy Stewart (\*2nd)

Mindy Stutesman

Jason Stutesmun (\*2nd)

Cindy Swearingin (\*2nd)

Heather Walsh

Tina Woods

John Zelif

### NEBRASKA

Linda Evans

Mary Pat Finn

Ginny Lee

Sally Rossman (\*2nd)

Tony Shatto

Connie Sidler

Ted D. Ward (\*9th)

### NORTH CAROLINA

Don Moore

William H. Teague (\*15th)

### OHIO

Glen Anderson (\*3rd)

Shawna Graves

Rita Hay (\*5th)

Karen Kolb

Denzil Luzzadder (\*8th)

Rick L. Metzger (\*7th)

Diana Nehus

Keeley Ream

Robert Sommers

Roxana L. Sommers (\*2nd)

Dale E. Thompson, III

Duane Van Sickle (\*3rd)

Ladislav Vegh

William D. Weidlich

Steve Wertz

Kelly Westhoven

Tom Wolfe (\*6th)

### OKLAHOMA

James Alford

Stacy Austin

George Bowman

Allen Boyle

Adam Butler

Gale Caldwell

Becky Campo

Machelle Cartmell (\*2nd)

Shane Charles

Deborah Cooper (\*2nd)

Suzanne Davis

Michael Ditmore

Machele Dooley

Mike Dushay

Tony Fisher

Hoyt Gibson

Brian Gladden

Melannie Gray

Hank Hasenbeck

Monica Hayden

Lori Hefner

Jason Herring

Larry Lankford

Kris Ledford

Jeff Leforce

Jared Lentz

Todd Martin

Traci Matney

Shean McKnight

Cris Miller

Kyle Miller

Kenna Montgomery (\*2nd)

Angie Newell

Heather Orf

Robin Orsburn

Regina Ramsey

Chris Ray

Jason Reece

Tammy Roebuck

Keith Savage

Sandy Shirley

Michelle Smith

Shandee Smith

Melinda Sumter

Shawn Sweeney

Kim Vassar

Robert Worden

### TENNESSEE

Ralph Barnett

Dalton Brothers

David Christenson

Jennifer Gill

Bruce McClure

Lebron Pursor

Kim Swanks

Lanny Wilkinson

Becky Williams

M. M. Wright

### TEXAS

Albert Timmenman

### VIRGINIA

Amanda Horton

Paula Plaugher

Cliff Shiftlet

### WISCONSIN

Tim Adams

Gary Bannan

Bob Boettner

Madeine Boettner

Dave Burdett

Steve Cameron (\*2nd)

Joe Connors

Dave Gauger

Sue Gruetzmacher

Roger Herold

Jean Hinkfuss (\*2nd)

Ronald Hinkfuss (\*2nd)

Hub Jaquet

Katie Jones

Kevin A. Keith (\*9th)

Bob Kelleavig

Brian Kudick

Greg Lacenski (\*2nd)

John Leitzeman (\*2nd)

Betsy Luepke (\*2nd)

Jerry Luepke (\*2nd)

Larry Lund

Donna Matz

Al Mazza

Tim Mueller

Joyce Natzke (\*2nd)

Ken Natzke (\*3rd)

Darel E. Nelson

Tim Novak

Jenny Nowak

Larry Osterberg

Ed Peck

Terry Petersen (\*2nd)

Delmar H. Plank

Ila Mae Raymakers (\*2nd)

Robert Raymakers (\*3rd)

Tom Reed

Dennis Rudie (\*2nd)

Bob Schumacher (\*3rd)

Art Schweiner (\*4th)

Ken Seering (\*14th)

Jim Sipiorski

George Smits

Larry Snider

Sandra Staszak (\*2nd)

Francis Steiner

Loren Subra

Robert Tenneson

James Wacek

Kathy Walrath

Andy Weberpal

Jerry Wendt (\*3rd)

Fred Westermeyer (\*2nd)

Elaine Wnuk (\*2nd)

Julius Wnuk (\*2nd)

Rozanne Zemicke (\*2nd)

### WYOMING

Richard Lake

## ALUMNI BLAZERS AWARDED TO STATE PRESIDENTS FOR MEMBERSHIP GROWTH



FFA Alumni Blazers, sponsored by the Ace Bolt and Nut Company, were awarded to State Presidents or their representatives for outstanding membership growth. Blazers were awarded to states with a membership increase of 50 or more members by October 1, 1987. States winning the blazers were Colorado, Iowa, Kentucky, Michigan, Mississippi, New Mexico, North Carolina, Ohio, Oklahoma, Tennessee, West Virginia, and Wisconsin.

## BUSINESS SESSION IN REVIEW

**Annual Dues-** A motion by Roger Schonhorst, Iowa, seconded by Andrew Stevens, Ohio, and carried to have dues remain at \$6.00 for 1989.

**Life Dues-** A motion by Terry Peterson, Wisconsin, seconded by Josiah Phelps and carried to have Life dues remain at \$100.00 through 1989. Life dues, created in 1971, have not been increased.

**Veterans Day-** A motion by Dennis Williams, Michigan, seconded and carried since the FFA Alumni Convention was held on Veterans Day that the FFA Alumni Association honors all Veterans for their patriotic service to our country.

## RETIRING NATIONAL COUNCIL MEMBERS



The retiring National FFA Alumni Council members were presented plaques for their outstanding service to the FFA Alumni Association. They were (l to r) Rick Mallir, Past National FFA President from Wilson, Kansas; Gary Maricle, Past National FFA Alumni President, formerly from Columbus, Nebraska and presently a Doctoral student at University of Missouri, Columbia, Missouri; and Randy Meyer, elected Member-at-Large representative, from Loyal, Wisconsin.

## 1987 OUTSTANDING FFA ALUMNI ACHIEVEMENT AWARD WINNERS



Pictured above from left are: Kenneth G. Seering of Wisconsin, LaVerne Nelson of Washington, and Floyd Doering receiving the award for Virgil O. Martinson of Wisconsin. Virgil Martinson was not present for presentation because of a death in his family. This award recognizes FFA Alumni members for their outstanding leadership and service to vocational education in agriculture and the agricultural industry. It is the highest award presented by the organization and is presented to not more than three individuals annually.

Ken Seering presently is a teacher of Vocational Agriculture and FFA Advisor at Denmark High School. He has received 14 consecutive Legion of Merit Awards and was selected outstanding FFA Alumni member in Wisconsin in 1980. He has worked closely with the development of the Denmark FFA Alumni which is the second largest affiliate and has won the Outstanding FFA Alumni Affiliate four times. He was the organizer of the FFA Alumni and Holland Young Farmer Exchange Program. He has served on the local school board and was selected to receive the Brown County Agriculture Heritage Award in 1986. In 1982, Ken Seering served as National FFA Alumni President. He also has served on the National FFA Foundation Sponsors Committee and has been an Executive Sponsor for six years.

LaVerne Nelson has been an outstanding supporter of the FFA since her oldest of 5 children enrolled in vocational agriculture in 1971. She was a charter member of the Eatonville, Washington FFA Alumni Affiliate and has served in every local office. She has been very active on the Washington FFA Alumni Council serving as Treasurer, Vice-President and President. She has attended 13 state FFA conventions and assisted the state with many different activities. She served on the National FFA Alumni Council as the Western Region Representative from 1981-83. Four of her five children were state FFA Officers. Three of her children are teachers of vocational agriculture, one a poultry scientist, and the other an elementary school teacher.

V. O. Martinson served as a teacher of Vocational Agriculture/ FFA Advisor for 22 years prior to joining the Wisconsin Department of Public Instruction in 1972. At the DPI, he served as a consultant in Agriculture Education and Secretary and Director of the Wisconsin FFA Alumni Association. Wisconsin has the most with 201 affiliates and over 8,000 FFA Alumni members. He also served as Vice-Chairman of Wisconsin Farm Progress Days Inc. and State FFA Executive Secretary prior to his retirement in 1985. He received the University of Wisconsin Alumni Association Outstanding Achievement Citation in 1970 and the Wisconsin Junior Dairymen Award in 1985. Currently, he is serving as Wisconsin State FFA Alumni Executive Secretary.

## 1987 STATE AND LOCAL MEMBERSHIP ACHIEVEMENTS

1. State with Largest Increase in Alumni Members
  - 1st - Wisconsin --- 767 members
  - 2nd - Ohio --- 351 members
2. State with Largest Percentage of Growth
  - 1st - West Virginia --- 170% (50 to 135) Increase of 85
  - 2nd - Arizona --- 91% (85 to 133) Increase of 78
3. State with most Alumni Members
  - 1st - Wisconsin --- 7,636 members
  - 2nd - Oklahoma --- 4,516 members
4. State with most Life Members
  - 1st - Oklahoma --- 1,264 Life members
  - 2nd - Wisconsin --- 1,194 Life members



Oklahoma receives plaques for most Life members and most Life members affiliates in a state.

5. Most Life Member Affiliates in a State
  - 1st - Oklahoma --- 28 Life affiliates
  - 2nd - Wisconsin --- 19 Life affiliates
6. Most Affiliates in a State
  - 1st - Wisconsin --- 206 affiliates
  - 2nd - Oklahoma --- 111 affiliates
7. Most Life Members in an Affiliate
  - 1st - Denmark, Wisconsin --- 163 Life members
  - 2nd - New Lexington, Ohio --- 149 Life members
8. Most Alumni Members in an Affiliate
  - 1st - Ozark, Missouri --- 540 members
  - 2nd - Denmark, Wisconsin --- 493 members



Pictured from left are representatives of the Denmark, Wisconsin Affiliate receiving a plaque for being the second largest affiliate from Tom Parker of the National Council and Ozark, Missouri receiving a plaque for being the largest affiliate with 540 members.

## Welcome New Life Members

Since our Fall Newsletter, our prestigious list of Life members has grown by 388 and has reached a total of 7,516. A Life member receives the FFA magazine and may designate that upon their death a \$100.00 check be presented as a memorial scholarship to an FFA member in a chapter or state, or may be designated to support some area of agriculture and/or vocational agriculture education.

### Alabama

Scott Sullivan

### California

James E. Drew

### Colorado

Britt Bell  
Bill Kellogg  
Michael Klamm  
Sidney Koon  
Cheryl Newbanks  
Louis Newbanks  
Mike Newbanks  
Lorence Raim  
Roger Seedorf  
Arven Vondy  
Doug Vondy

### Florida

Donna Beatty  
Tara Marie Bowers  
Missi Busch  
Ronald Carver  
J. J. Grow  
Gary Lee  
Rodney Martin  
James L. Parrish  
Steve Pearson  
Patricia Raberge  
Bob Rogers  
Howard Satin  
Bob Shelton  
Carl Sircy Jr.  
Steve Skipper  
Chris Wilder  
Adrian Williams  
Tony Willis  
Travis Wise

### Georgia

Allan Cain  
Argene Claxton  
Catherine Daniel  
Keith Elrod  
Esther R. Hefner  
Marie Holt  
Thomas M. Logan  
R. K. Purnell  
Earl Lee Royster  
Phillip Spivey  
Freddie C. Waltz  
Shirley Wells

### Idaho

Fred Beckman  
Glen Orthel

### Illinois

Noreen N. Frye  
Eugene Gualandri  
Everett Moeller  
Marc C. Mueller  
Rick O'Brien

Michael D. Stanek  
Jeff Svob  
Thomas Williams

### Indiana

David G. Stieglitz  
Ron Winiger

### Iowa

Kalyn A. Brix  
Keith Carlson  
Tom Cory  
Jon K. Davis  
Doyle Drake  
David Harmon  
Matthew Musselman  
Dennis Price  
Reg Soldwish  
Roger Twedt

### Kansas

Art Chapman  
Ernest Finlayson  
Les Gauby  
John Gilliam  
Dale Hiesterman  
David Hubler  
Thomas M. James  
F. H. Langley  
Phillip Markley  
Kristi Maxson  
Jean L. McClaskey  
Jack Miller  
Clark Pool  
Hugh Robinson  
Dennis Schuessler

### Kentucky

Ann S. Bardwell  
Todd Barlow  
Danny Basil  
Eddie Burks  
Brad Chambliss  
Greg Corbin  
Doug Eades  
Patrick Henderson  
Roy H. Hunt  
Joey Johnson  
Nancy F. Kelly  
Donna Ladd  
Carl F. Lamar  
Troy Russelburg  
Kelly Lee Sharp  
Larry D. Swetnam

### Maryland

George Cramer  
Harold Lenhart  
Boyd Robinson Jr.

### Michigan

Robert Carpenter  
Karen S. Carpenter  
Allen W. Cox

John George  
Robin Johnson  
Clifford Johnson  
Mary E. Malburg  
Steve Pogodzinski  
Jody E. Pollok  
Beth Ann Stuever  
Mike Wenkel

### Minnesota

Scott H. Hislop  
Larry J. Klingbeil  
Cynthia L. Klingbeil  
John Davis  
Ella Ma Lausen  
David A. Peper

### Mississippi

Keith Stokes

### Missouri

Robert Birkenholz  
David Brown  
Ruth Busch  
Charles Gillis  
Gary Harrison  
Vernon R. Hudspeth  
June Humphrey  
Carson McCormack III  
Jeff McGregor  
Gerald Meadows  
Ray Morris  
Larry Smith

### Nebraska

Phillip Beck  
Lowell Belville  
Jim Bruns  
Valorie Chmiel  
Charles Folken  
David Hagstrom  
Wanda Hagstrom  
Richard Herink  
Robert Huntley  
Stanley Johnson  
George Medlock  
Howard Miller  
Merle E. Morgan  
Gary Peterson  
Clarice Sabata  
Fritz Steinhoff  
Martin Thompson  
New Jersey  
Elaine DePiero

### North Carolina

Erik Beard  
Ronald L. Clodfelter  
C. J. Elkins  
Pratt Karriker  
Michael W. McCall  
Ward Robinson  
Hugh Solomon  
William Upchurch Jr.  
Ricky J. Warren

### North Dakota

Ron Carlson  
Myron Jobs  
Daran Sagvold

### Ohio

Eva Beeler  
William Bookman  
Barbara Clark  
Robert J. Clark  
Scott R. Clark  
Dave Collins  
Edward E. Corben  
John Davis  
Brett Davis  
Tracy Dendinger  
Nancy Diamond  
Bud Feeser  
Travis Flichman  
Betty Grooms  
James Grooms  
Bruce Hammond  
Charles Hatem  
Jeff Ittel  
Van Jones  
Tammy Kendall  
Matt Klingler  
Paul Kruggel  
Clara McCauley  
George McCauley  
Allen Metzger  
Dora Metzger  
David Miller  
Julie Nicol  
Stuart Parsons  
Dan Schroer  
Richard Seibert  
Charlene Shoaf  
Lloyd Shoaf  
Carolyn Skinner  
Gary Skinner  
Robin Staron  
Scott Streber  
Fredrick Thomas  
Pete Thompson  
Margaret Van Sickle  
Kay Wagner  
William Waidelich  
Holly E. Waidelich  
Travis Williams  
Honora R. Wilson  
Joy Young  
Wayne Young

### Oklahoma

Hal Abel  
John Anderson  
John T. Anderson  
Stephen Barnett  
Ray Beech  
Ann Benson  
Jerry Bonham  
Wayne Boothe  
Max Boothe  
Wayne Boyce

Jon Brown  
Carrie Brown  
Gary Clark  
Ray Cundiff  
Jack Daugherty  
Gail Davis  
Phil Dreesen  
Don M. Dushay  
Martha Dushay  
James Dyer  
Hallie Evans  
Odel Fields  
Dorothy Ford  
Robert D. Ford  
Robin W. Gaston  
John Golliver  
Ruby Gore  
Melvin Graham  
Jack Grimmett Sr.  
Frank Grossman  
Jack Harper  
Jackie Harper  
Kenny Hawkins  
James Herbel  
Gerald Hill  
Patty Hill  
Donna Irons  
Edwin Kiehn  
Carl Kiehn  
Elene Kinder  
Lester Kinder  
Fred Krasser  
Bruce Lenhart  
Hank Martin  
Robert Meisner  
Gerald Miligan  
Lisa Millsap  
Clinton Mindemann  
G. T. Moody  
Ernest Muncief  
Darrel Nivens  
David Ousley  
Bobby Priess  
Sharon Priess  
Jim Ramsey  
Meniesa Ransom  
Debi Regnier  
Jerry Renshaw  
Tom Rich  
Bill Roten Jr.  
Alan Schenk  
Don Schenk  
Jeff Schenk  
Tom Sexton  
Eddie Sims  
Delton Smith  
Jody Stelzig  
Shane Stewart  
Nick Swindler  
Doyle Turner  
Matthew Vanfleet  
Sam Vamer  
Melody Vamer  
Houston Williams  
Cliff Williams

John Williams  
Alicia Woodward  
Thomas Wyndi  
Z. Joe Young  
Jane Young  
Jerold Young  
Zorral J. Young  
Thelma H. Young

### Oregon

Willa M. Hendricks

### Pennsylvania

August Birchler  
Betty Main  
Howard Main  
Jay McMichael

### South Dakota

Jeff Knutson  
John Rist

### Tennessee

Hunter Barnett  
David Boreing  
Hayden Evans  
John Head  
Frank Medley  
Frank Vincent  
Dan Whitlow  
Tommy Williams  
Joe Zumstein

### Texas

Angela Corbin  
Jackie Crain  
Julie Davis  
Michael C. Edwards  
Kevin Hamilton  
Wendy Milford  
Walter Newport IV  
Robert Parkey  
Terri Sue Thomas  
Raymond Wells

### Virginia

John L. Baird  
Wallace Brown II  
Allen Burnette  
Wickham Coleman  
Daniel Lee Cook  
Jimmy Depoy  
Brent Eaton  
Eric Fitzgerald  
Eddie Good  
Lowell Heatwole  
Veronica Horan  
Tim Long  
Miller McDonald  
Roderick Miller  
Lowell Moyers  
Roy Revercomb  
Everette Revercomb  
Jimmy Roberts

Jerry Secrist  
James Shiflet  
Cliff E. Shiflet  
Chris Stover  
Michael Swope  
Henry Terry  
Joe Wampler

### Washington

Elizabeth Platt  
Paul Fronia  
Dixie Gould  
George Gustafson  
Gary Jenkin  
Delores Jenkin  
Jack Kirk  
John Kirk Jr.  
Mark McGrann  
Jane McGuire  
Don Richardson  
Pat Richardson

### West Virginia

Carl S. Thomas

### Wisconsin

Jon Anderson  
Robert Dietsche  
Herbert Dietsche  
Clifford Duffeck  
Jon E. Eita  
Bob Feller  
Sonya Rae Granger  
William Grulke  
Tim Heeg  
Richard Heine Jr.  
Brian P. Higgins  
Blane Huppert  
Larry Koch  
Bob Kroll  
Mark Krueger  
Orville Kudick  
Paul Larson  
Dennis Leonard  
Albert Lippert  
Marjorie Lippert  
Allan Ludwigson  
Paul Mleziva  
Paul K. Oman  
Christopher Pufahl  
Ray Sackman  
Lucille Schlies  
Mark Sheedy  
Bert Shefchik  
Ted Snyder  
Jeannie Swagel  
Steve Swagel  
Todd Wehler  
Robert Wipperfurth  
Robert Zellmer

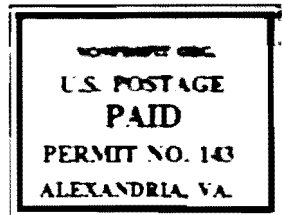
### Wyoming

David B. Petsch  
Jeffrey F. Petsch



## NEWSLETTER

FFA ALUMNI ASSOCIATION  
P.O. BOX 15058  
ALEXANDRIA, VA. 22309-0058



### RHÔNE-POULENC INC. AGROCHEMICAL DIVISION

Manhouth Junction, New Jersey 08852 - Telephone: (201) 297-0100

As a special project of the  
National FFA Foundation

\*Manufacturer of BUCTRIL® herbicide,  
MOCAP® insecticide and other fine  
Agrochemicals.



NEWSLETTER

# THE DAWN OF A NEW ERA IN AMERICAN AGRICULTURE.

Today it's easy to have doubts about the future of U.S. agriculture. But at Rhone-Poulenc we see the dawning of a new and challenging era in this great nation's farmland. One that seeks a commitment from both Future Farmers and Rhone-Poulenc—to help keep American agriculture the most productive in the world.

We're continuing to work toward this goal by increasing

our service to the agribusiness community. By introducing effective tools like Buctril® corn herbicide, Tackle® soybean herbicide, as well as Aliette® and Rovral® fungicides. And by devoting our finest research efforts to discovering environmentally safe chemicals for the American farmer.

It really is the Dawn of a New Era for both of us. Your future and ours are closely linked.

Rhone-Poulenc and the Future Farmers of America—committed to a new era in American agriculture.



Buctril® Tackle® Aliette® and Rovral® are registered trademarks of Rhone-Poulenc Inc.